

Replace Transformer and Switch for MRI Wing

VA Sierra Nevada Health Care System

March 8th, 2017

COR:

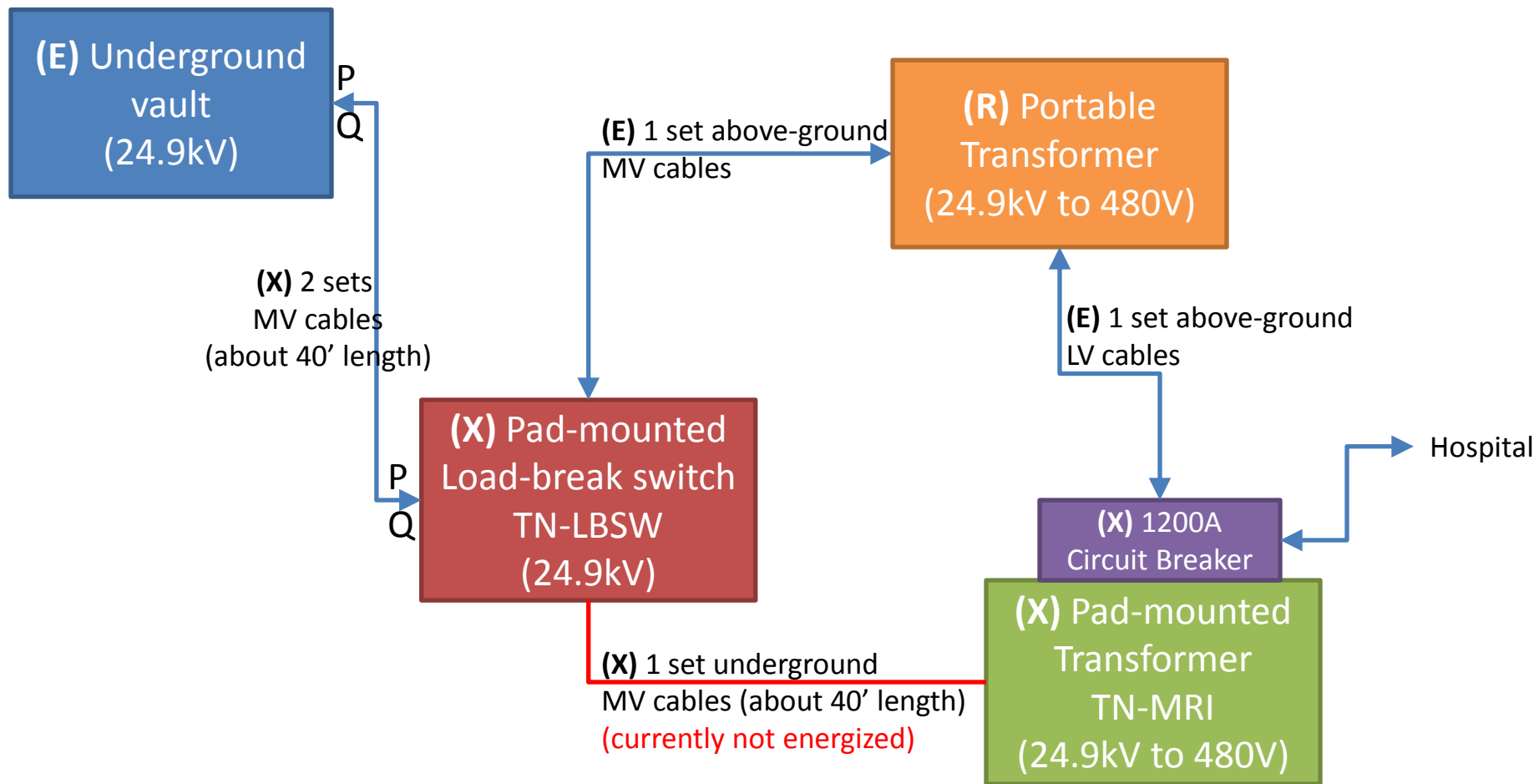
Jon Emis

jonathon.emis@va.gov

(775) 789-6685

Date: **03/08/2017**

COR: J. Emis	Project #: 654-17-781
Dwg Title: Title Sheet	Project Location: VA Sierra Nevada Health Care System 975 Kirman Avenue Reno, NV 89502
Sheet #: A001	



LV: Low Voltage (480V)
 MV: Medium Voltage (24.9kV)
 (E): Existing
 (R): Relocate
 (X): Remove

Date: **03/08/2017**

COR: J. Emis	Project #: 654-17-781
Dwg Title: Existing Conditions	Project Location: VA Sierra Nevada Health Care System 975 Kirman Avenue Reno, NV 89502
Sheet #: A002	

(E) Underground vault (24.9kV)

(N) 2 sets MV cables (about 40' length)

(N) Pad-mounted Load-break switch TN-LBSW (24.9kV)

(N) 1 set underground MV cables (about 40' length)

(N) 1200A Circuit Breaker
(N) Pad-mounted Transformer TN-MRI (24.9kV to 480V)

Hospital

VA to coil and store
(E) 1 set above-ground MV cables
(E) 1 set above-ground LV cables

(R) Portable Transformer (24.9kV to 480V)

LV: Low Voltage (480V)
MV: Medium Voltage (24.9kV)
(E): Existing
(N): New
(R): Relocate

Date: **03/08/2017**

COR: **J. Emis**

Project #: **654-17-781**

Dwg Title:
New Conditions

Project Location:
VA Sierra Nevada Health Care System
975 Kirman Avenue
Reno, NV 89502

Sheet #: **A003**