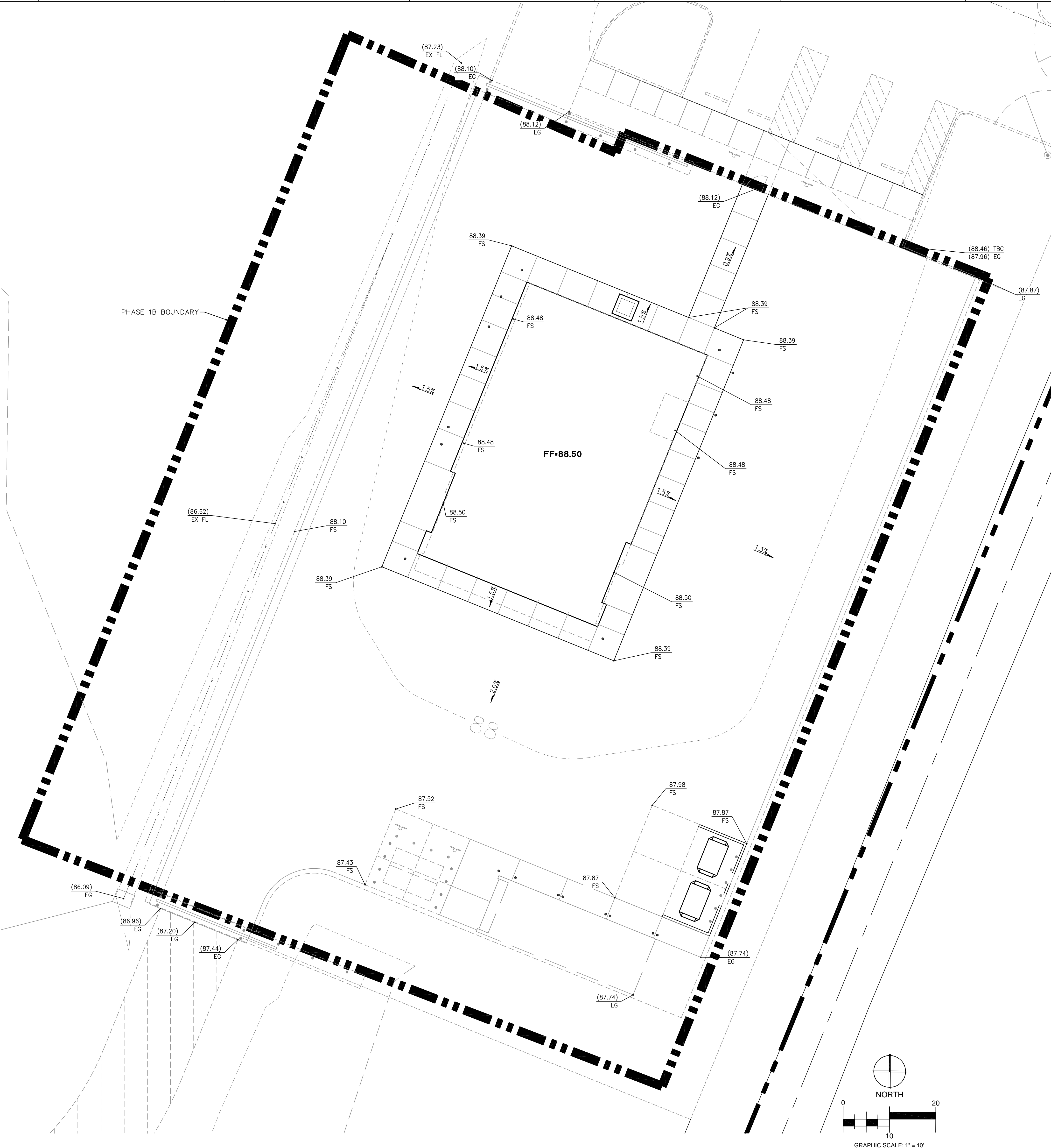


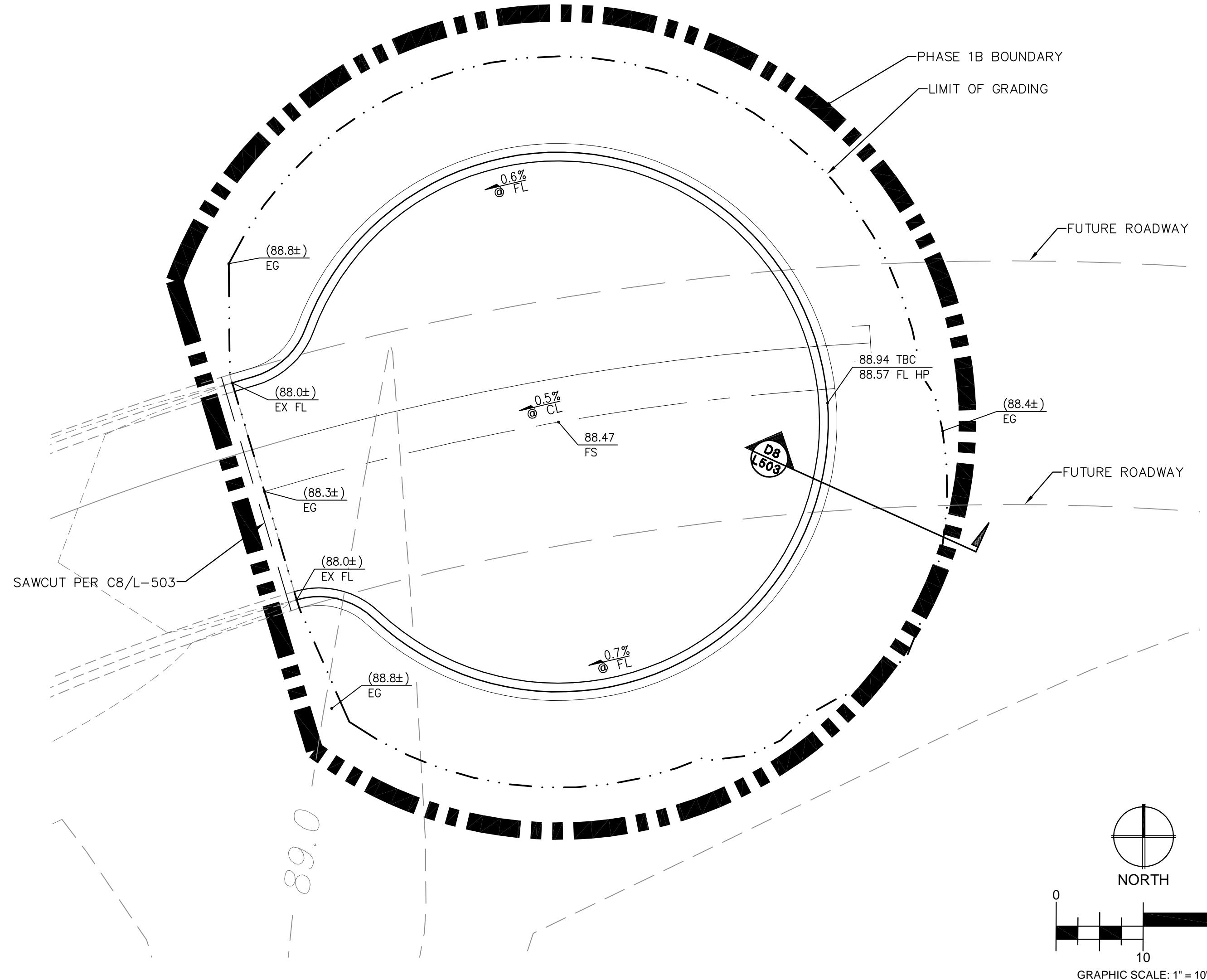
LEGEND

- 90.50 SPOT ELEVATION
- 2.0% SLOPE
- CURB/DRAIN INLET
- STORM DRAIN MANHOLE
- 12" SD STORM DRAIN PIPE
- UNDERDRAIN
- PHASE 1B BOUNDARY / LIMIT OF WORK
- LIMIT OF GRADING
- R RIDGE LINE
- 89.0 EXISTING CONTOUR
- 89.0 PROPOSED CONTOUR

- NOTES**
- ALL GRADING SHALL COMPLY WITH THE RECOMMENDATIONS OF THE GEOTECHNICAL INVESTIGATION AND ENGINEERING REPORT PREPARED BY W.L. BURLE ENGINEERS, P.A., DATED FEBRUARY 15, 2011 AND ANY REVISIONS AND/OR ADDENDA THERETO.
 - CONTOURS SHOWN ARE A GRAPHICAL DEPICTION OF PROPOSED GRADING BASED ON COMPUTER GENERATED SURFACE MODELING AND ARE FOR REFERENCE ONLY.



F2 MAINTENANCE AND BULK STORAGE BUILDING - GRADING PLAN (ADD-ALTERNATES #1 & #2)
1"=10'



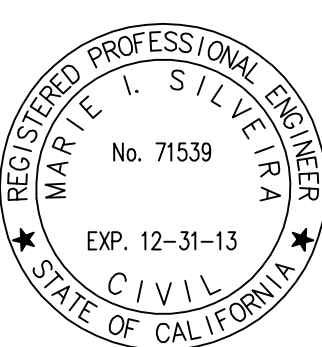
F6 CUL-DE-SAC PLAN
1"=10'

Subconsultant List	
DREYFUSS & BLACKFORD	3540 FOLSOM BOULEVARD, SACRAMENTO, CA 95816 (916) 453-1234
CAPITAL ENGINEERING CONSULTANTS	11020 SUN CENTER DRIVE, RANCHO CORDOVA, CA 95670 (916) 851-3500
ECOM ENGINEERING INC.	1796 TRIBUTE ROAD, SUITE 100 SACRAMENTO, CA (916) 641-5600
BUEHLER & BUEHLER STRUCTURAL ENGINEERS, INC.	600 Q STREET, STE. 200, SACRAMENTO, CA. 95811 (916) 443-0303
W.L. BURLE ENGINEERS, PA	111 S. WALNUT STREET, GREENVILLE, MS 38702 (662) 332-2619
AQUA ENGINEERING, INC.	4803 INNOVATION DRIVE, FORT COLLINS, CO 80525 (970) 229-9668
THE SIERRA WEST GROUP, LLC	2730 GATEWAY OAKS DRIVE, STE. 110 SACRAMENTO, CA. 95833 (916) 925-4000



NATIONAL
CEMETERY
ADMINISTRATION

Drawing Title GRADING ENLARGEMENTS AND ADD-ALTERNATES		Project Title LOUISIANA NATIONAL CEMETERY GRAVESITE EXPANSION PHASE 1B		Date: MARCH 22, 2012
Approved: Director, Office of Construction Management		Building Number	Checked MS	Drawn SGA
Approved: Director, Project Management Service		Location LOUISIANA NATIONAL CEMETERY ZACHARY, LOUISIANA		DRAWING NO. L-506 Dwg. 34 of 137



Carter Burgess
A Wholly Owned Subsidiary of Jacobs
Consultants in Architecture, Engineering,
Planning, and the Environment
Sacramento Office
180 Promenade Circle, Suite 300
Sacramento, California 95834
(916) 929-3323 Fax (916) 929-1772

P:\Projects\WUXU0039\Drawings\WUXU0039_L-500 Grading Plan.dwg 3-21-12 11:07:56 AM Greenness