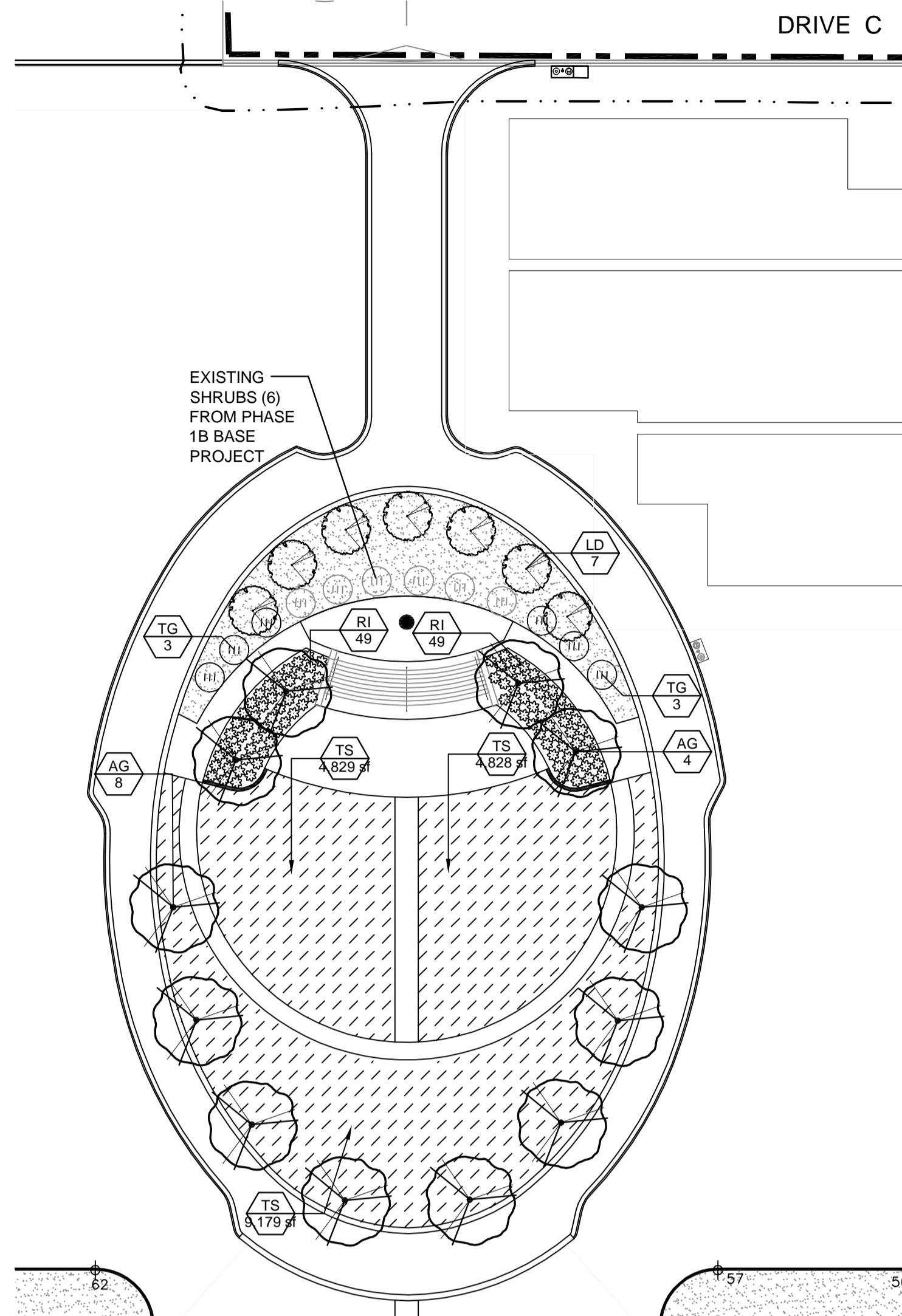
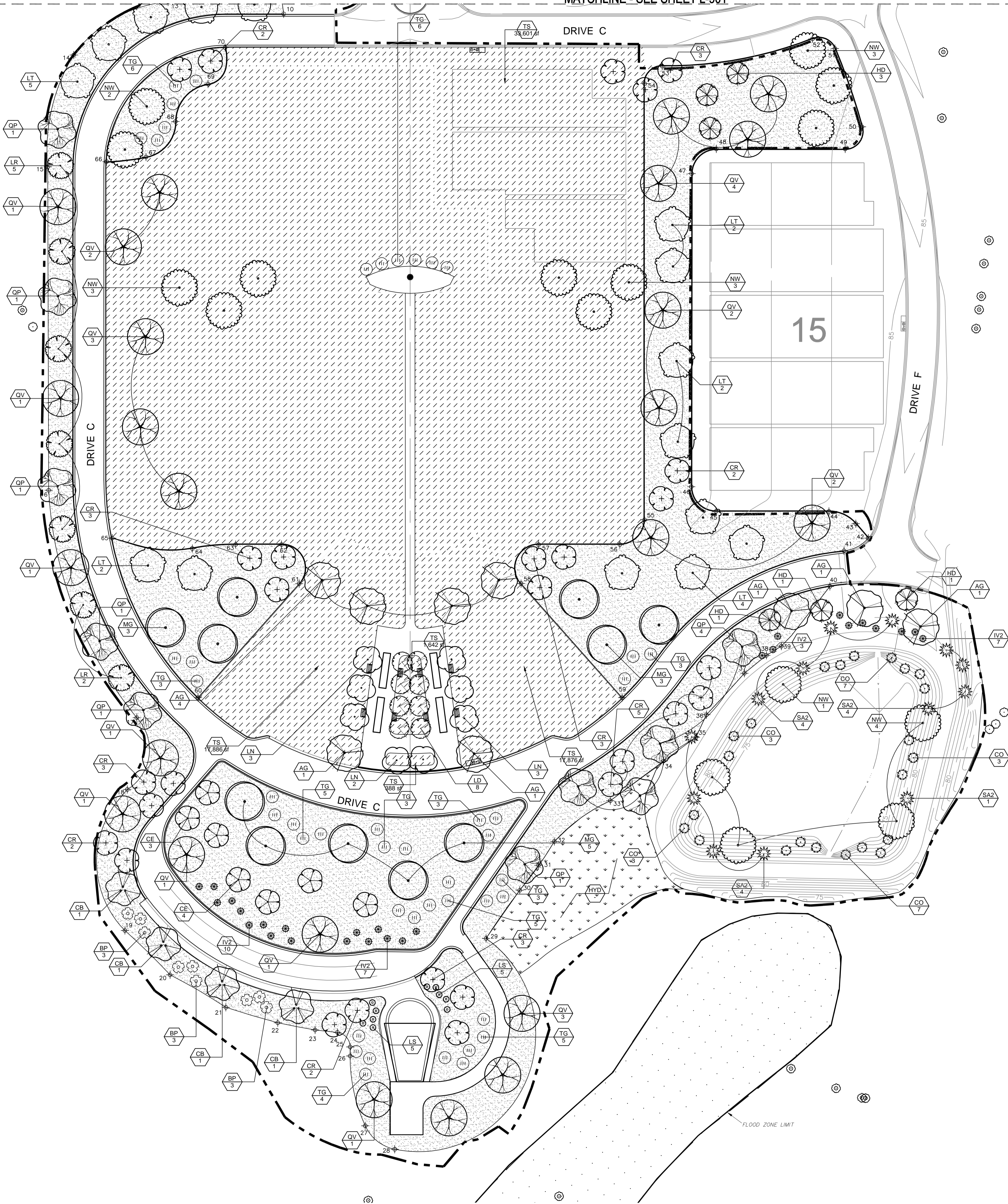


MATCHLINE - SEE SHEET L-901

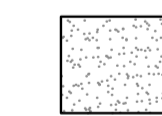
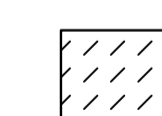
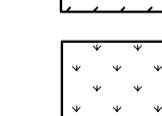




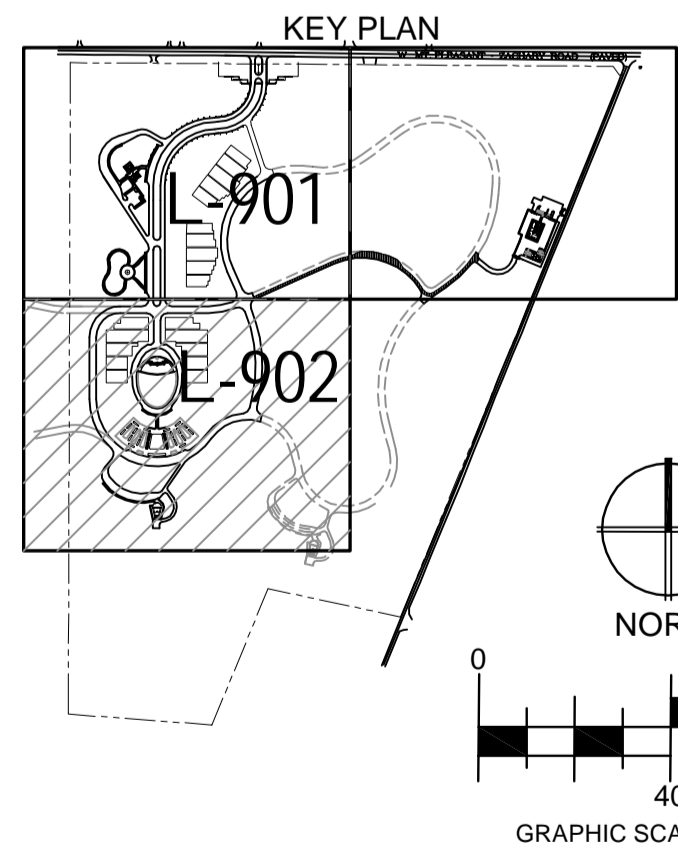
FLAG ASSEMBLY AREA ADD-ALTERNATE #3 PLANTING PLAN

FLAG ASSEMBLY AREA - ADD-ALTERNATE #3  
PLANT SCHEDULE

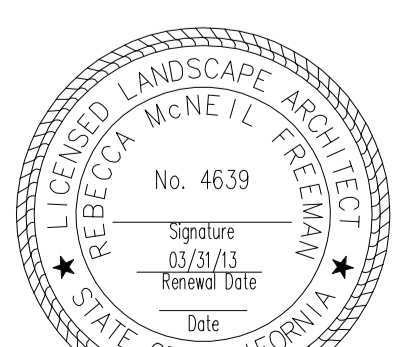

TREES	CODE	BOTANICAL NAME	COMMON NAME	SIZE	MATURE HT/SP	PLANTING ZONE	QTY
	AG	ACER RUBRUM 'OCTOBER GLORY' TM	OCTOBER GLORY MAPLE	15 GAL	40'/30'	B	12
	LD	LAGERSTROEMIA INDICA 'DYNAMITE'	DYNAMITE CRAPE MYRTLE	15 GAL	20'-30'/10'-20'		7
SHRUBS	CODE	BOTANICAL NAME	COMMON NAME	CONT	MATURE HT/SPD	PLANTING ZONE	QTY
	RI	RHAPHIOLEPIS INDICA	CALISTO	1 GAL	2'/4'		98
	TG	TERNSTROEMIA GYMANTHERA	JAPANESE CLEYERA	5 GAL	10'/8'		6
GROUND COVERS	CODE	BOTANICAL NAME	COMMON NAME	CONT	MATURE HT/SPD	FIELD4	QTY
	TS	TURF-SOD	CELEBRATION BERMUDAGRASS	SOD			18,837 SF

LEGEND

-  BARK MULCH PLANTER AREA - SHREDDED HARDWOOD MULCH
-  SOD
-  HYDROSEED - EROSION CONTROL  
REFER TO PLANTING SPECIFICATIONS
-  EXISTING TREE OVER 12" DIA. TO REMAIN
-  LIMITS OF PHASE 1B



CONSTRUCTION DOCUMENTS

<div><div><b>Carter Burgess</b> A Wholly Owned Subsidiary of Jacobs Consultants in Architecture, Engineering, Planning, and the Environment Sacramento Office 180 Promenade Circle, Suite 300 Sacramento, California 95834 (916) 929-3323 Fax (916) 929-1772</div></div>		<div>Subconsultant List</div> <table><tr><td>DREYFUSS &amp; BLACKFORD</td><td>3540 FOLSOM BOULEVARD, SACRAMENTO, CA 95816 (916) 453-1234</td></tr><tr><td>CAPITAL ENGINEERING CONSULTANTS</td><td>11020 SUN CENTER DRIVE, RANCHO CORDOVA, CA 95670 (916) 851-3500</td></tr><tr><td>ECOM ENGINEERING INC.</td><td>1796 TRIBUTE ROAD, SUITE 100 SACRAMENTO, CA (916) 641-5600</td></tr><tr><td>BUHLER &amp; BUEHLER STRUCTURAL ENGINEERS, INC.</td><td>600 Q STREET, STE. 200, SACRAMENTO, CA. 95811 (916) 443-0303</td></tr><tr><td>W.L. BURLE ENGINEERS, PA</td><td>111 S. WALNUT STREET, GREENVILLE, MS 38702 (662) 332-2619</td></tr><tr><td>AQUA ENGINEERING, INC.</td><td>4803 INNOVATION DRIVE, FORT COLLINS, CO 80525 (970) 229-9668</td></tr><tr><td>THE SIERRA WEST GROUP, LLC</td><td>2730 GATEWAY OAKS DRIVE, STE. 110 SACRAMENTO, CA. 95833 (916) 925-4000</td></tr></table>	DREYFUSS & BLACKFORD	3540 FOLSOM BOULEVARD, SACRAMENTO, CA 95816 (916) 453-1234	CAPITAL ENGINEERING CONSULTANTS	11020 SUN CENTER DRIVE, RANCHO CORDOVA, CA 95670 (916) 851-3500	ECOM ENGINEERING INC.	1796 TRIBUTE ROAD, SUITE 100 SACRAMENTO, CA (916) 641-5600	BUHLER & BUEHLER STRUCTURAL ENGINEERS, INC.	600 Q STREET, STE. 200, SACRAMENTO, CA. 95811 (916) 443-0303	W.L. BURLE ENGINEERS, PA	111 S. WALNUT STREET, GREENVILLE, MS 38702 (662) 332-2619	AQUA ENGINEERING, INC.	4803 INNOVATION DRIVE, FORT COLLINS, CO 80525 (970) 229-9668	THE SIERRA WEST GROUP, LLC	2730 GATEWAY OAKS DRIVE, STE. 110 SACRAMENTO, CA. 95833 (916) 925-4000	<div><div>NATIONAL CEMETERY ADMINISTRATION</div></div>	<div>Drawing Title PLANTING PLAN</div> <div>Approved: Director, Office of Construction Management</div> <div>Approved: Director, Project Management Service</div>	<div>Project Title LOUISIANA NATIONAL CEMETERY GRAVESITE EXPANSION PHASE 1B</div> <div>Building Number</div> <div>Location LOUISIANA NATIONAL CEMETERY ZACHARY, LOUISIANA</div>	<div>Date: MARCH 22, 2012</div> <div>Project No. 870CM3023B</div> <div>DRAWING NO. L-902</div> <div>Dwg. 54 of 137</div>
DREYFUSS & BLACKFORD	3540 FOLSOM BOULEVARD, SACRAMENTO, CA 95816 (916) 453-1234																			
CAPITAL ENGINEERING CONSULTANTS	11020 SUN CENTER DRIVE, RANCHO CORDOVA, CA 95670 (916) 851-3500																			
ECOM ENGINEERING INC.	1796 TRIBUTE ROAD, SUITE 100 SACRAMENTO, CA (916) 641-5600																			
BUHLER & BUEHLER STRUCTURAL ENGINEERS, INC.	600 Q STREET, STE. 200, SACRAMENTO, CA. 95811 (916) 443-0303																			
W.L. BURLE ENGINEERS, PA	111 S. WALNUT STREET, GREENVILLE, MS 38702 (662) 332-2619																			
AQUA ENGINEERING, INC.	4803 INNOVATION DRIVE, FORT COLLINS, CO 80525 (970) 229-9668																			
THE SIERRA WEST GROUP, LLC	2730 GATEWAY OAKS DRIVE, STE. 110 SACRAMENTO, CA. 95833 (916) 925-4000																			