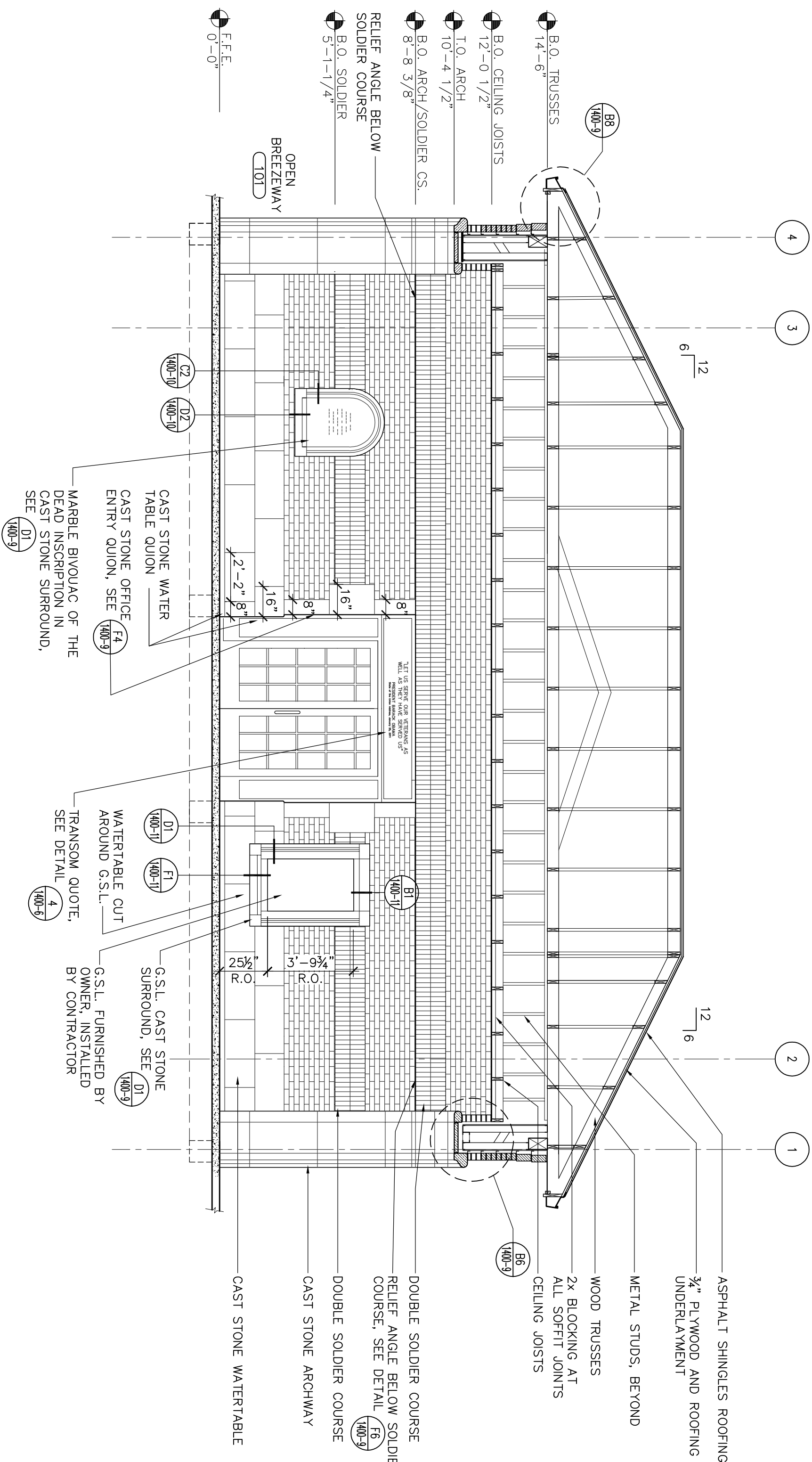
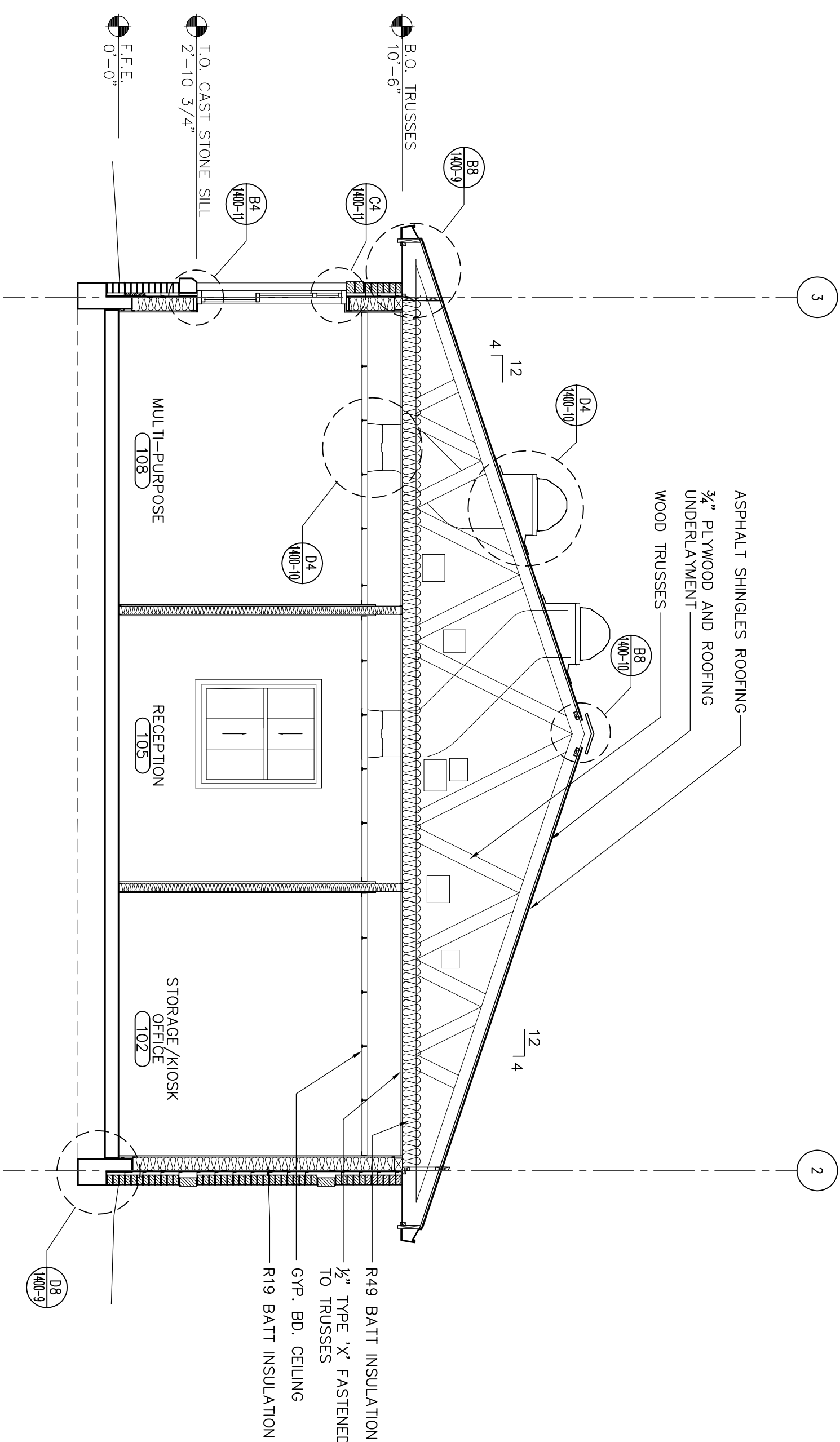



**A** BUILDING SECTION

$$1/2'' = 1'-0''$$


## C BUILDING SECTION

$$1/2^n = 1 - 0^n$$


**B BUILDING SECTION**

$$1/2'' = 1'-0''$$
[illegible]


**Carter-Burgess**

A VINCI® Owned Subsidiary of Jacobs

Environmental Engineering,  
Planning, and the Environment

Strategic Office  
1400 California, Suite 300  
Sacramento, California 95834  
(916) 924-5325 Fax: (916) 924-1772

Subcontractor List	
DREYFUSS & BLACKFORD	3540 FOLSOM BOULEVARD, SACRAMENTO, CA 95816 (916) 453-1234
CAPITAL ENGINEERING CONSULTANTS	11020 SUN CENTER DRIVE, RANCHO CORDOVA, CA 95670 (916) 851-3500
ECOM ENGINEERING INC.	1796 TRIBUTE ROAD, SUITE 100 SACRAMENTO, CA (916) 641-5600
BUEHLER & BUEHLER STRUCTURAL ENGINEERS, INC.	600 O STREET, STE. 200, SACRAMENTO, CA 95811 (916) 433-0033
W.L. BUEHLER ENGINEERS, PA	111 S. WALNUT STREET, GREENWALT, MS 38702 (662) 333-2619
AJUDA ENGINEERING, INC.	4803 INNOVATION DRIVE, FORT COLLINS, CO 80525 (970) 229-9668
THE SIERRA WEST GROUP, LLC	2730 GATEWAY OAKS DRIVE, STE. 110 SACRAMENTO, CA 95833 (916) 925-4000



NATIONAL  
CEMETERY  
ADMINISTRATION

Drawing Title	P.I.C./ADMINISTRATION BUILDING SECTIONS
Approved Director, Office of Construction Management	
Approved Director, Project Management Service	

Project Title	LOUISIANA NATIONAL CEMETERY GRAVESITE EXPANSION PHASE 1B		
Location	LOUISIANA NATIONAL CEMETERY ZACHARY, LOUISIANA		
Building Number	Checked	Drawn W/S	

Date:  
MARCH 22, 2012

Project No.  
870CM3023B

DRAWING NO.  
1400-4

Dwg. 70 of 137

# CONSTRUCTION DOCUMENTS