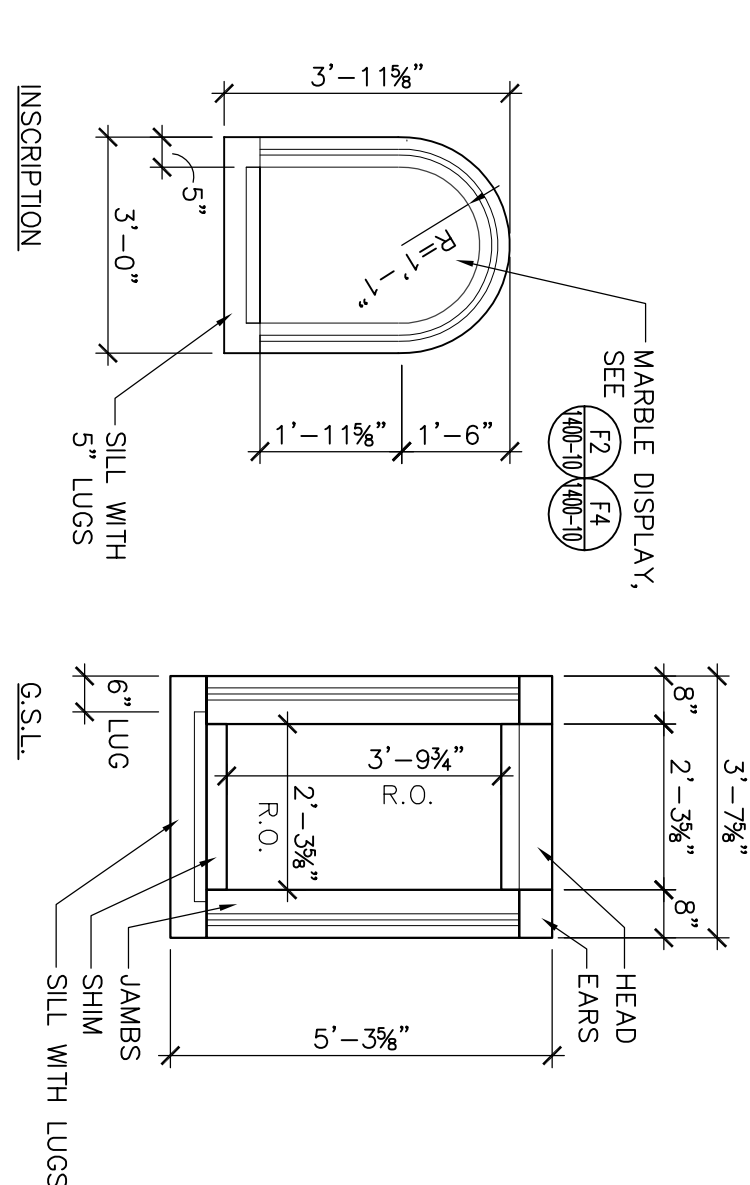
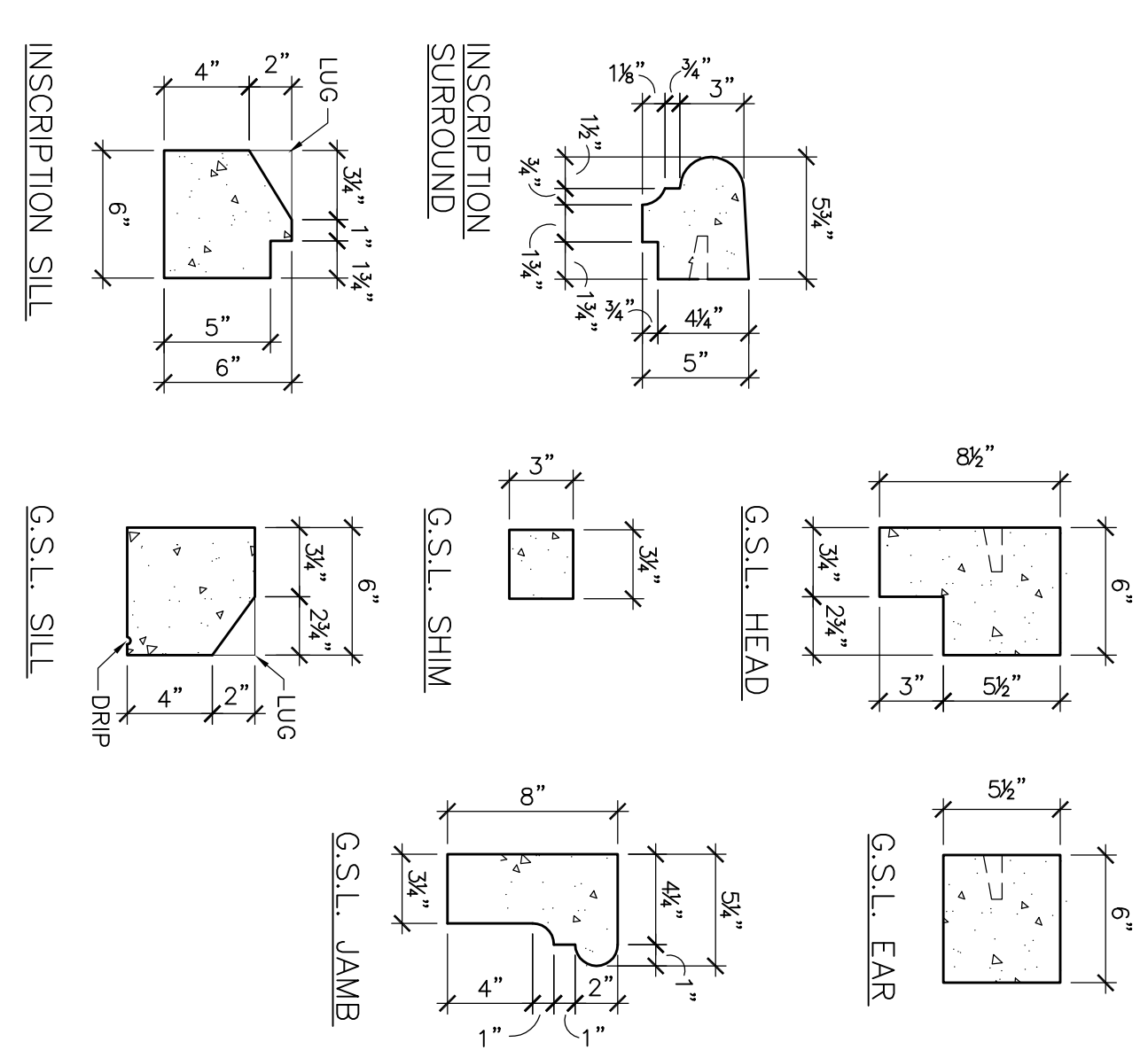


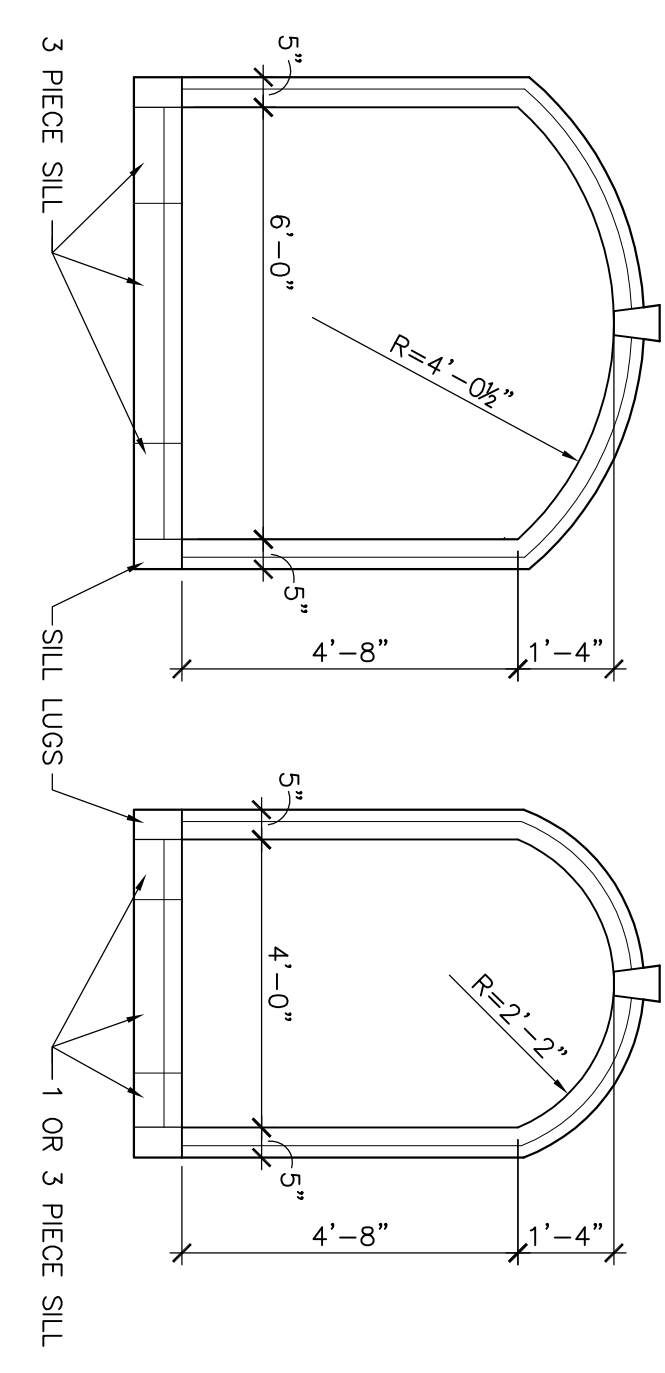
CI BREEZEWAY ARCH - KEYSTONE



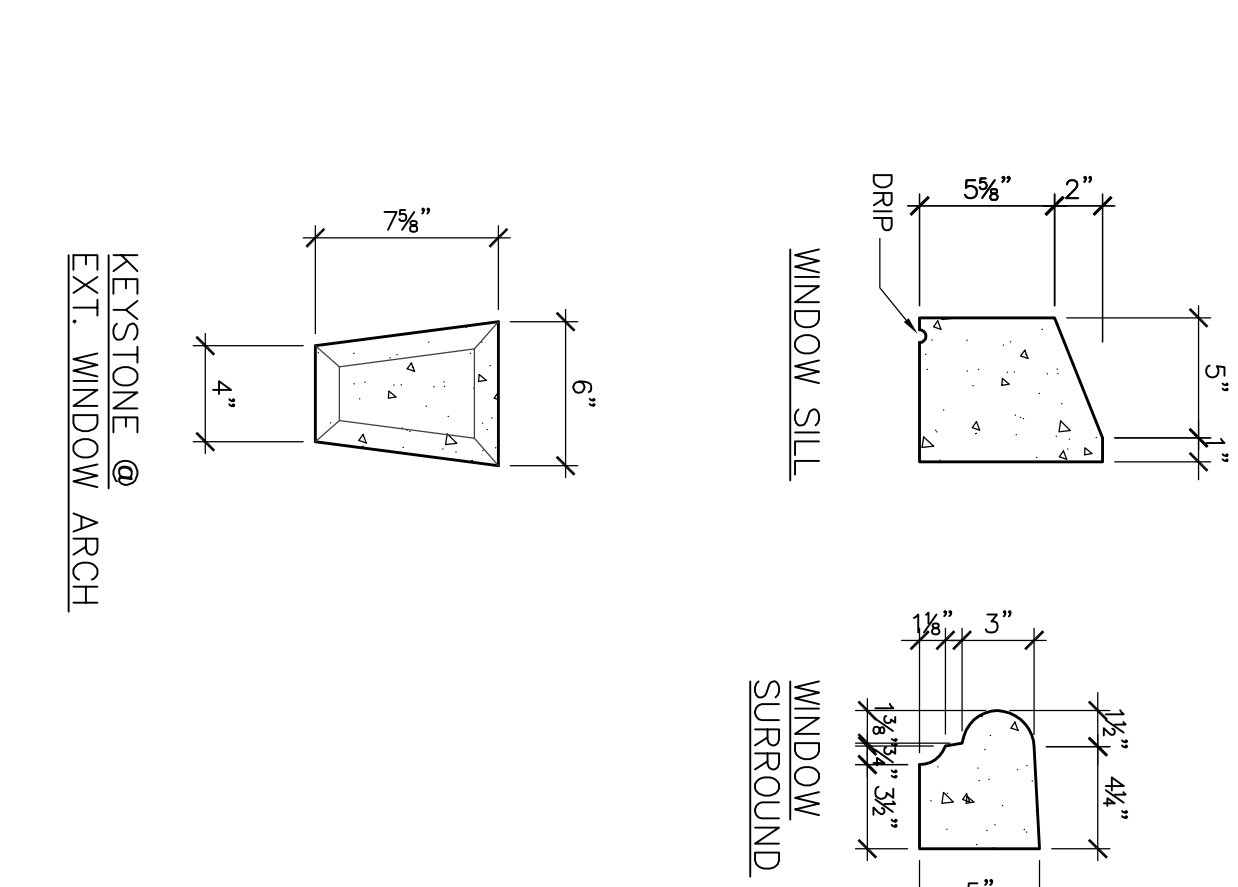
CAST STONE DISPLAYS



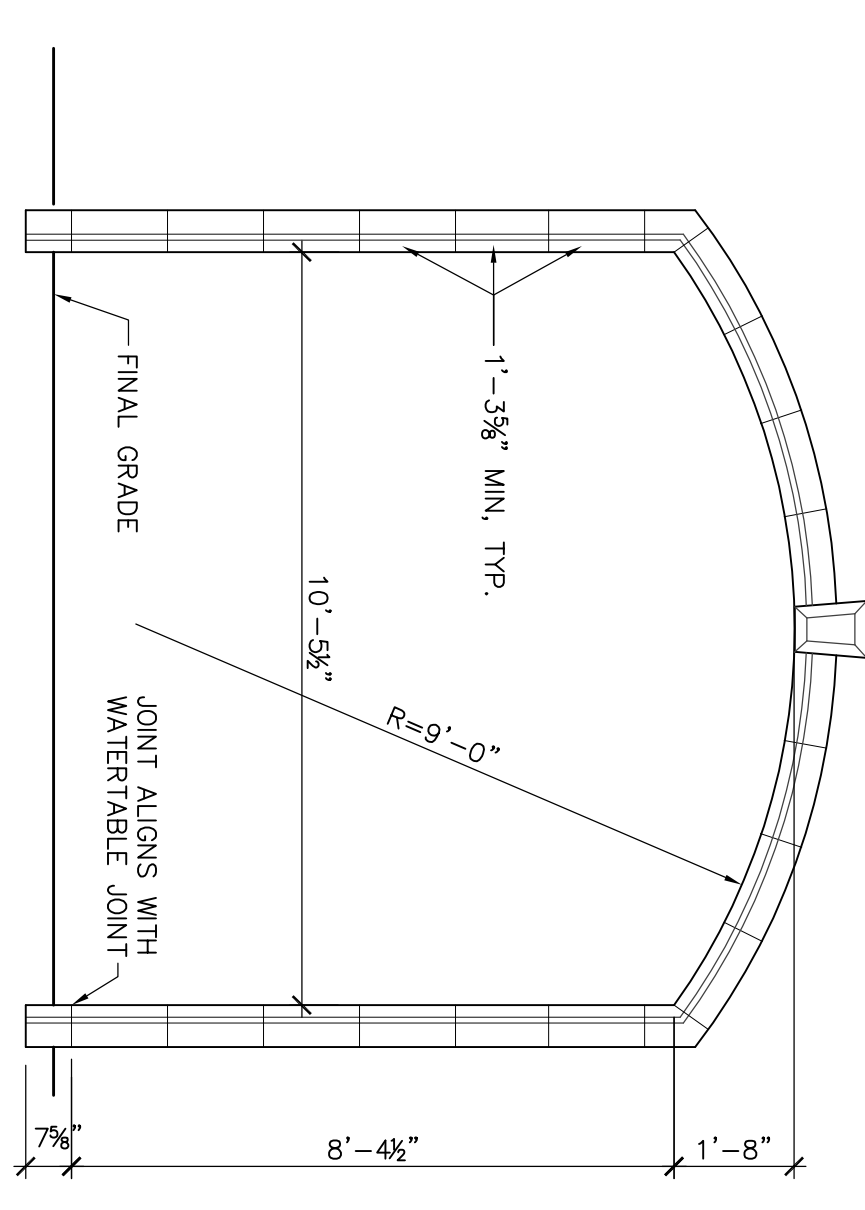
CAST STONE PROFILES @ DISPLAYS



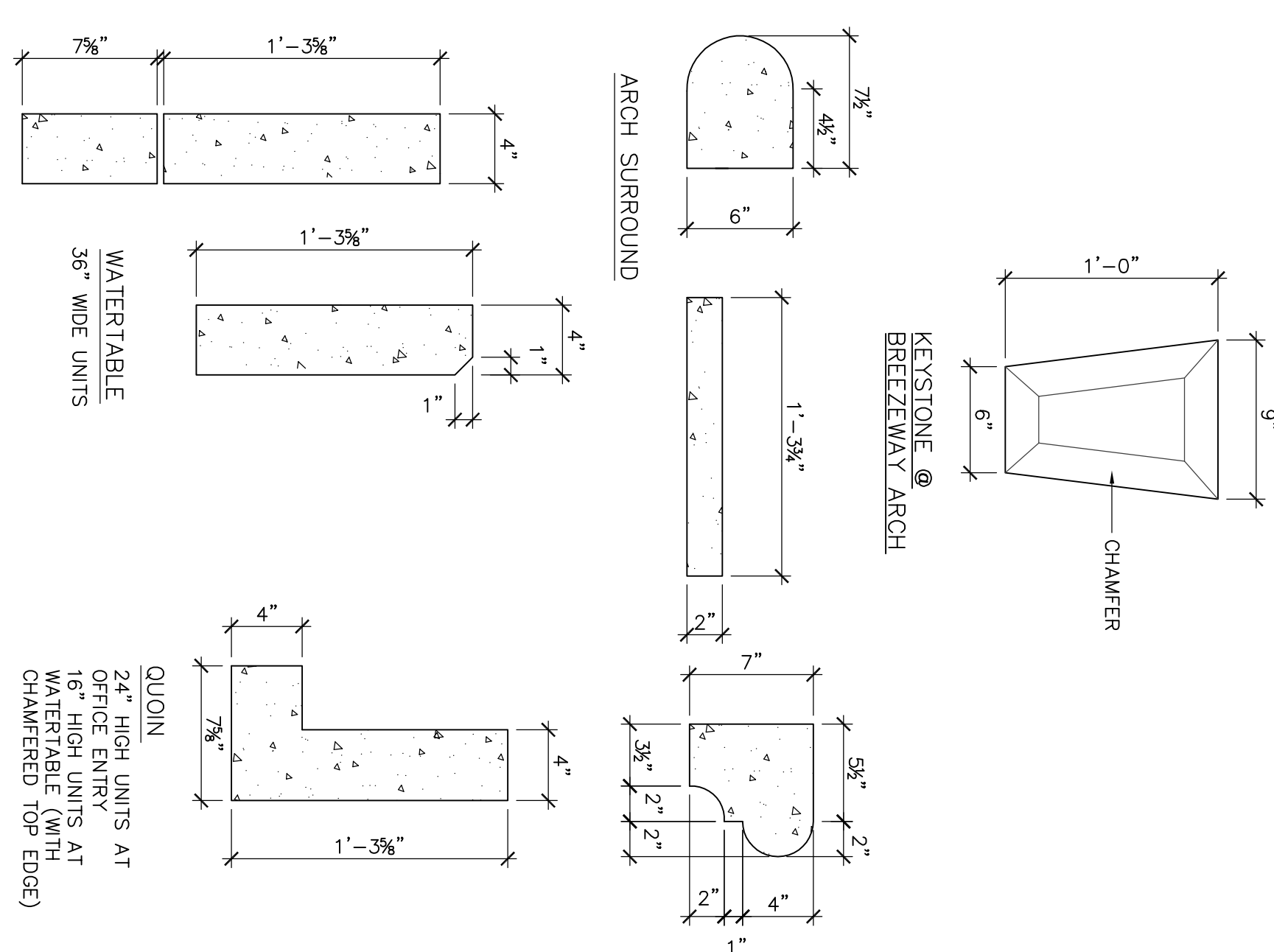
CAST STONE ELEVATION - WINDOWS



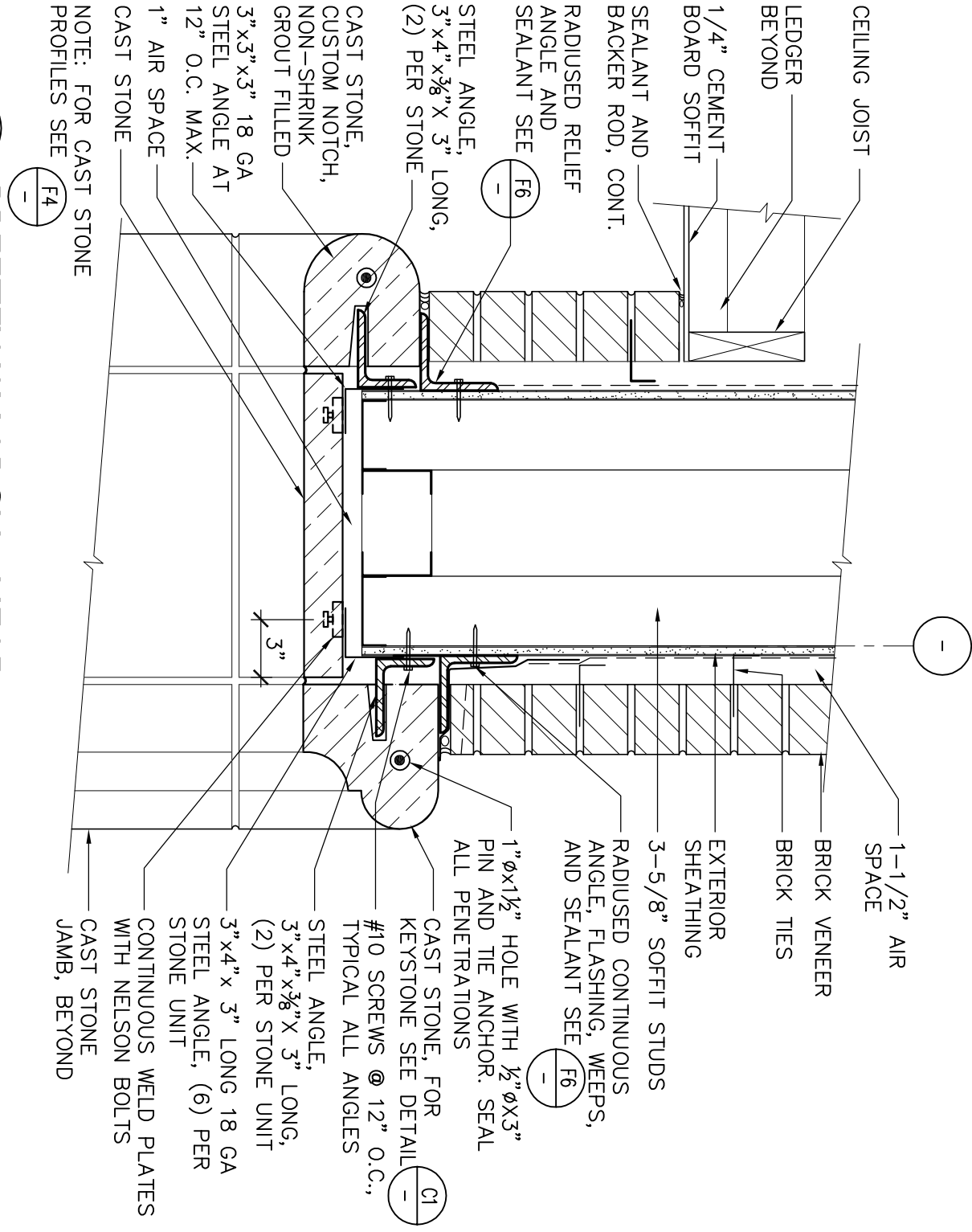
F2 CAST STONE PROFILES @ WINDOWS



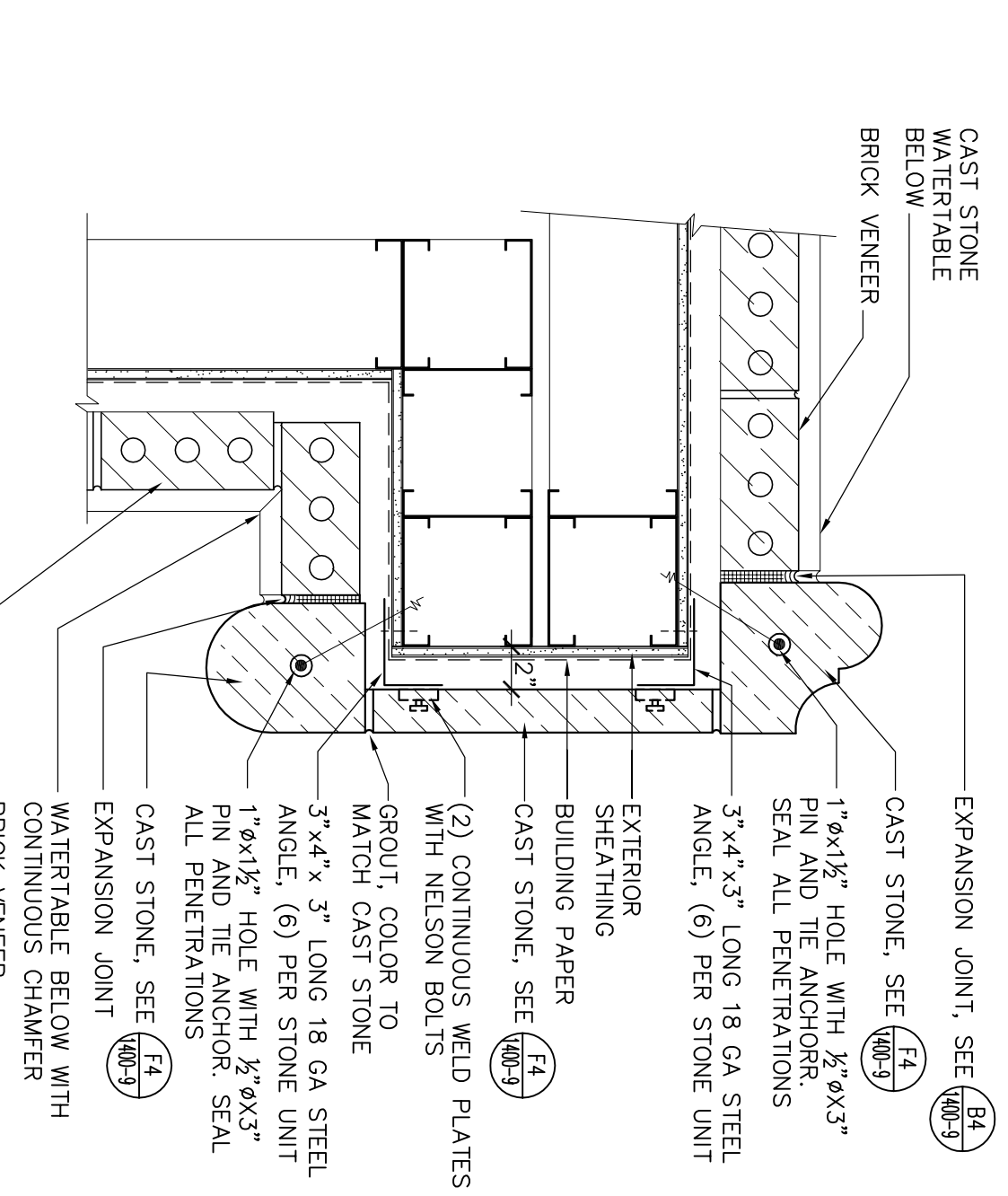
D4 CAST STONE ELEVATION - BREEZEWAY



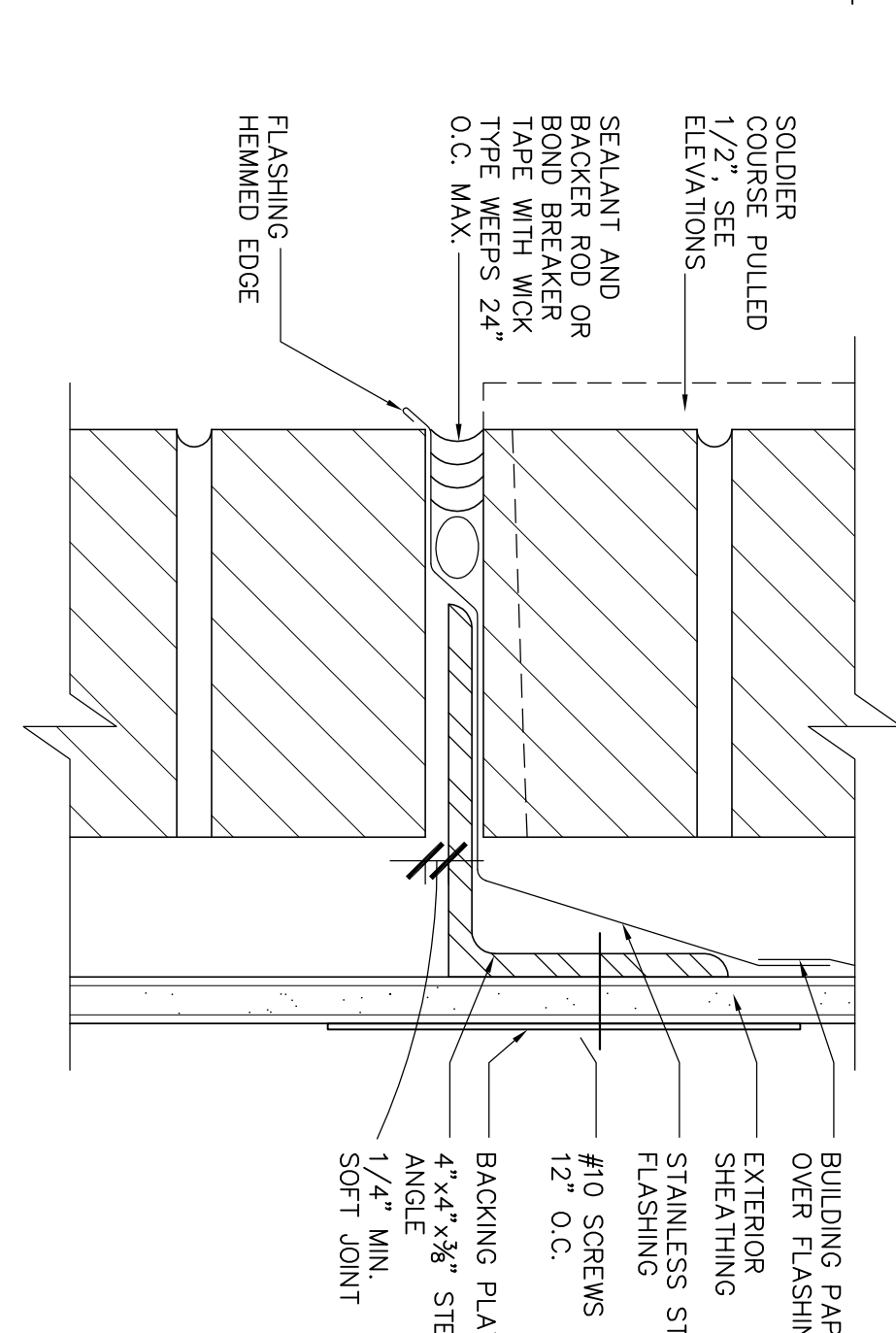
CAST STONE PROFILES @ BREEZEWAY



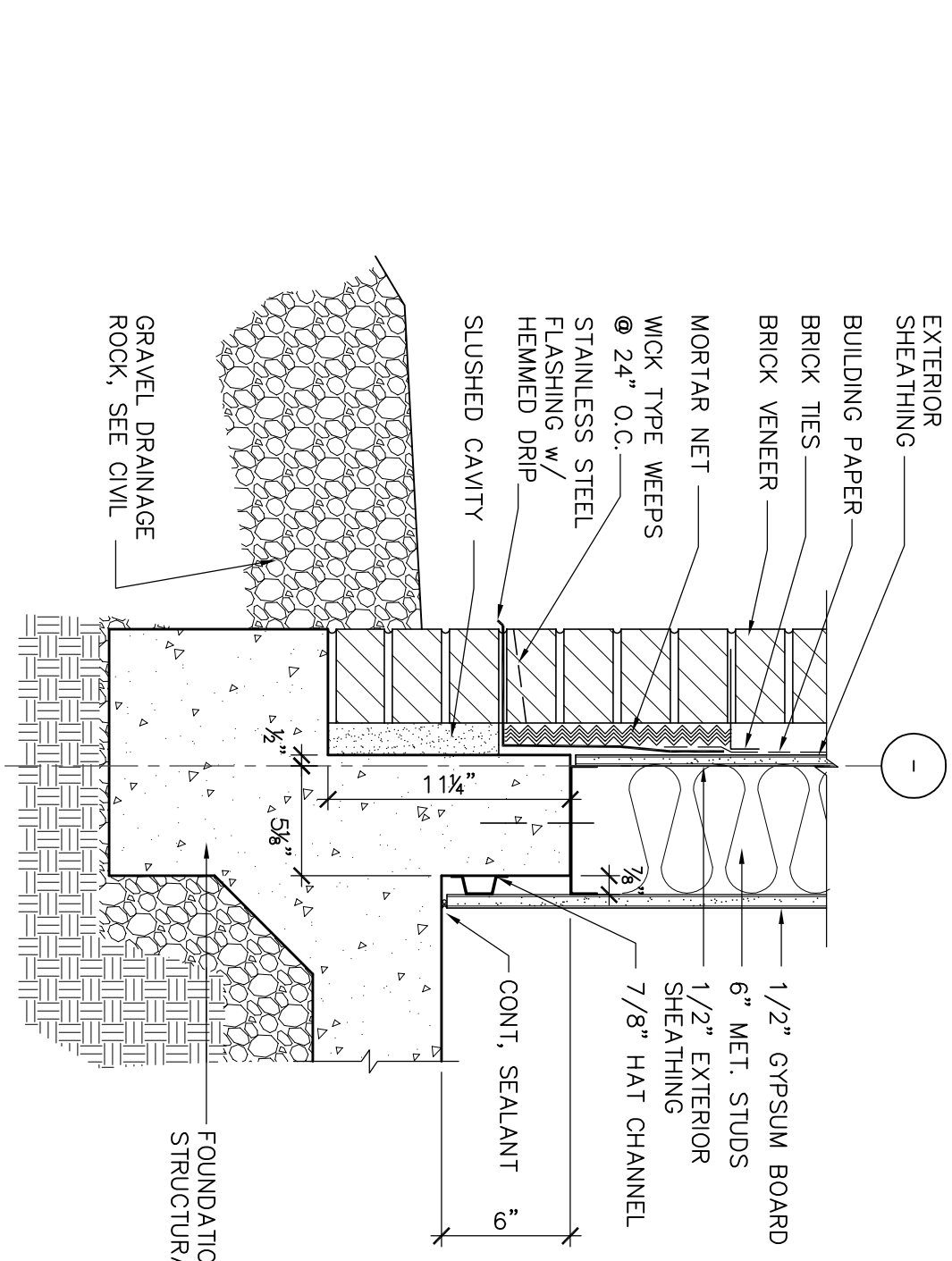
B6 BREEZEWAY ARCH - HEAD



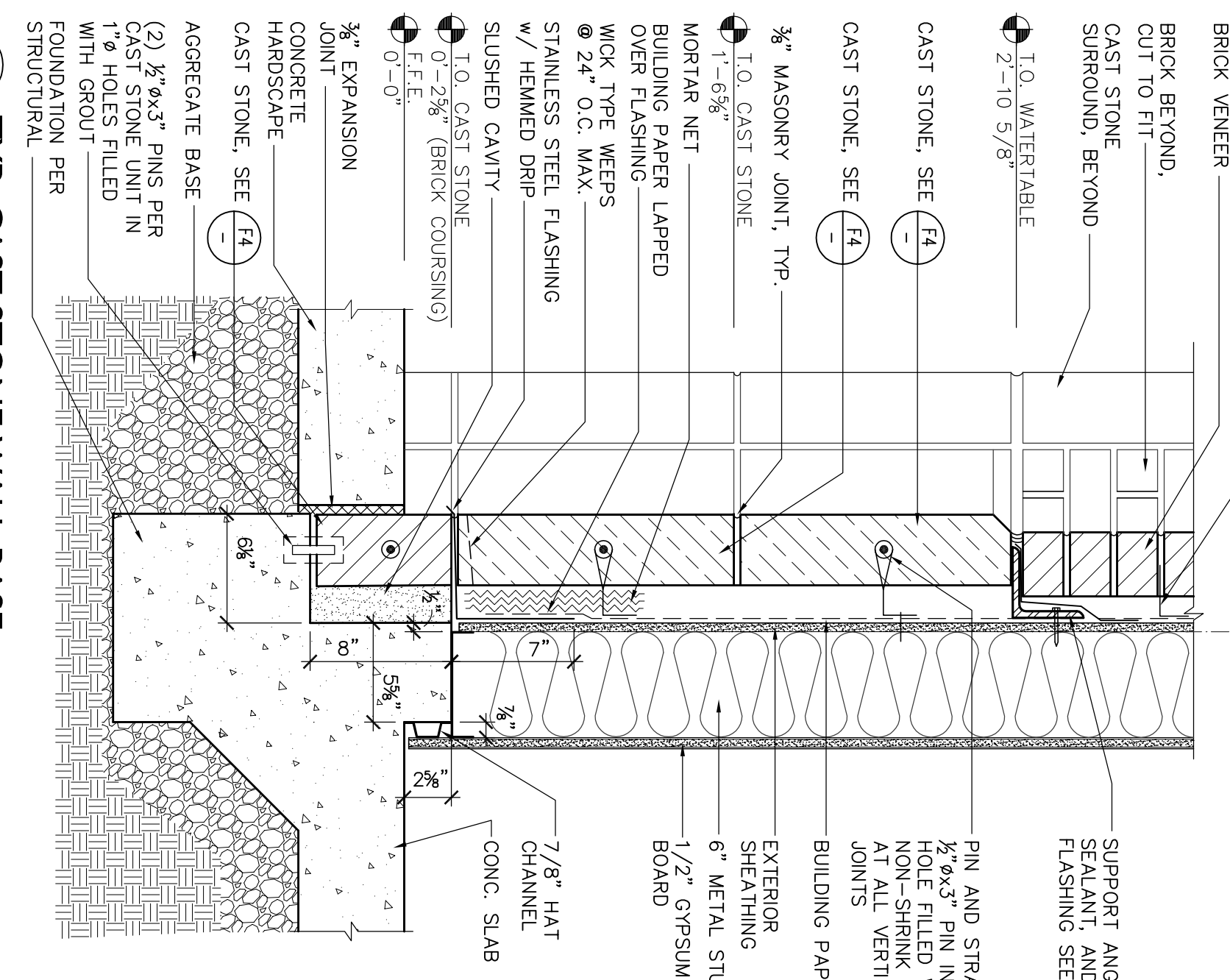
D6 BREZLEWAY ARCH - JAMB




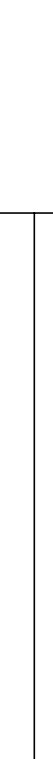
E6 BRICK VENEER RELIEF ANGLE



D8 TYP. BRICK VENEER WALL BASE



8

<p>  </p>		<p> Carter-Burgess A Wholly Owned Subsidiary of Jacobs Consultants in Architecture, Engineering, Planning, and the Environment Sacramento Office, Suite 300 Sacramento, California 95834 (916) 928-3223 Fax (916) 928-1772 </p>	
<p> Subcontract List DREYFUS & BLAUGHERO 3540 FOLSON BOULEVARD, SACRAMENTO, CA 95816 (916) 453-1234 CAPITAL ENGINEERING CONSULTANTS 11020 SUN CENTER DRIVE, RANCHO CORDOVA, CA 95670 (916) 851-3500 ECOM ENGINEERING INC. 1796 TRIBUNE ROAD, SUITE 100 SACRAMENTO, CA (916) 641-9500 BUEHLER & BUEHLER STRUCTURAL ENGINEERS, INC. 600 Q STREET, STE. 200, SACRAMENTO, CA 95811 (916) 443-0303 W.L. BURLE ENGINEERS, PA 111 S. WALWUT STREET, GREENVILLE, MS 38702 (662) 332-2619 AQUA ENGINEERING, INC. 4803 INNOVATION DRIVE, FORT COLLINS, CO 80525 (970) 229-9668 THE SIERRA WEST GROUP, LLC 2730 GATEWAY OAKS DRIVE, STE. 110 SACRAMENTO, CA 95833 (916) 925-4000 </p>		<p>  NATIONAL CEMETERY ADMINISTRATION </p>	
<p> Drawing Title P.I.C./ADMINISTRATION EXTERIOR EXTERIOR DETAILS </p>		<p> Project Title LOUISIANA NATIONAL CEMETERY GRAVESITE EXPANSION PHASE 1B </p>	
<p> Approved: Director, Office of Construction Management Approved: Director, Project Management Service </p>		<p> Building Number 1400 Checked Drawn 00 </p>	
<p> Approved: Director, Project Management Service </p>		<p> Location LOUISIANA NATIONAL CEMETERY ZACHARY, LOUISIANA </p>	
<p> Drawing NO. 1400-9 Day, 75 of 137 </p>		<p> Project No. 870CM3023B Date: MARCH 22, 2012 </p>	