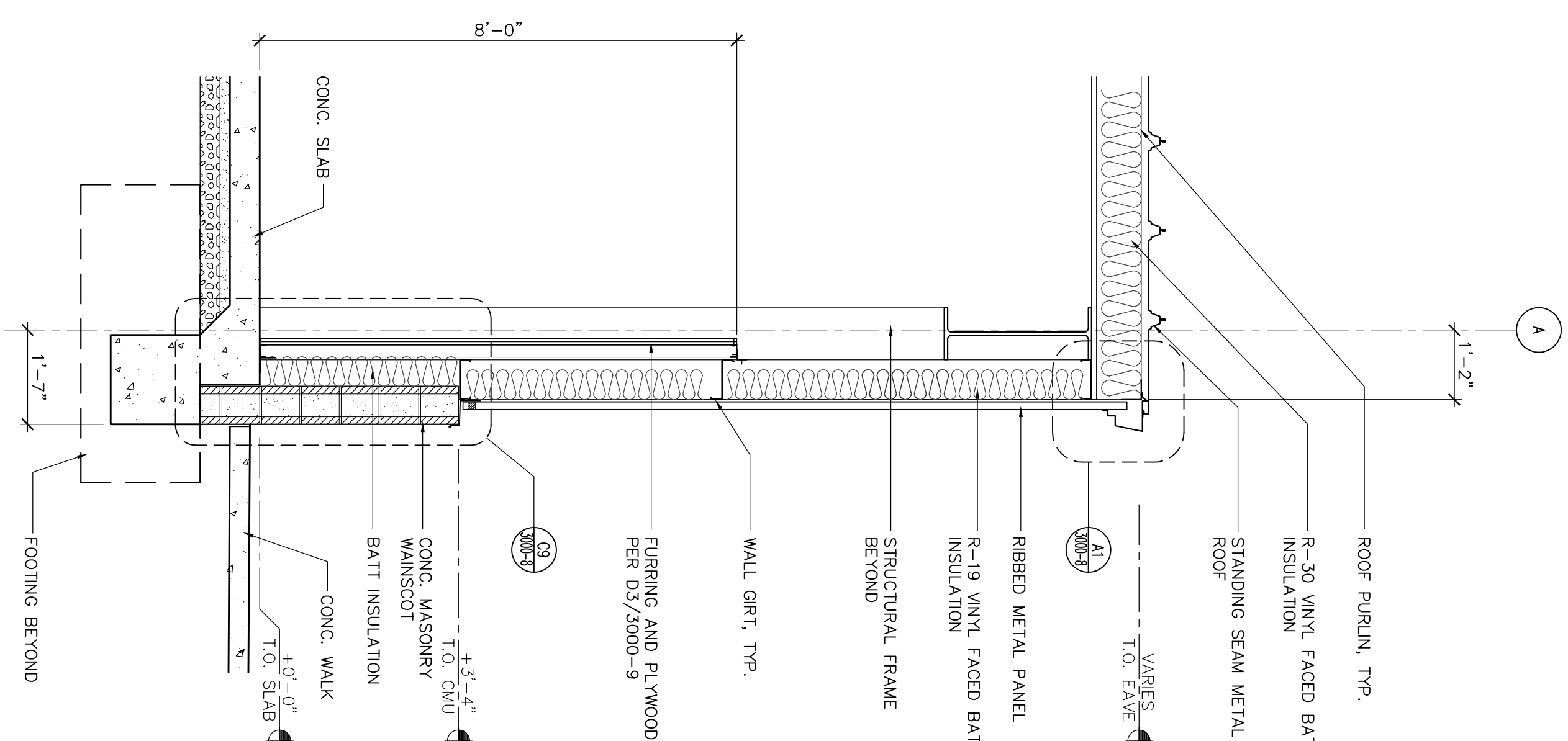
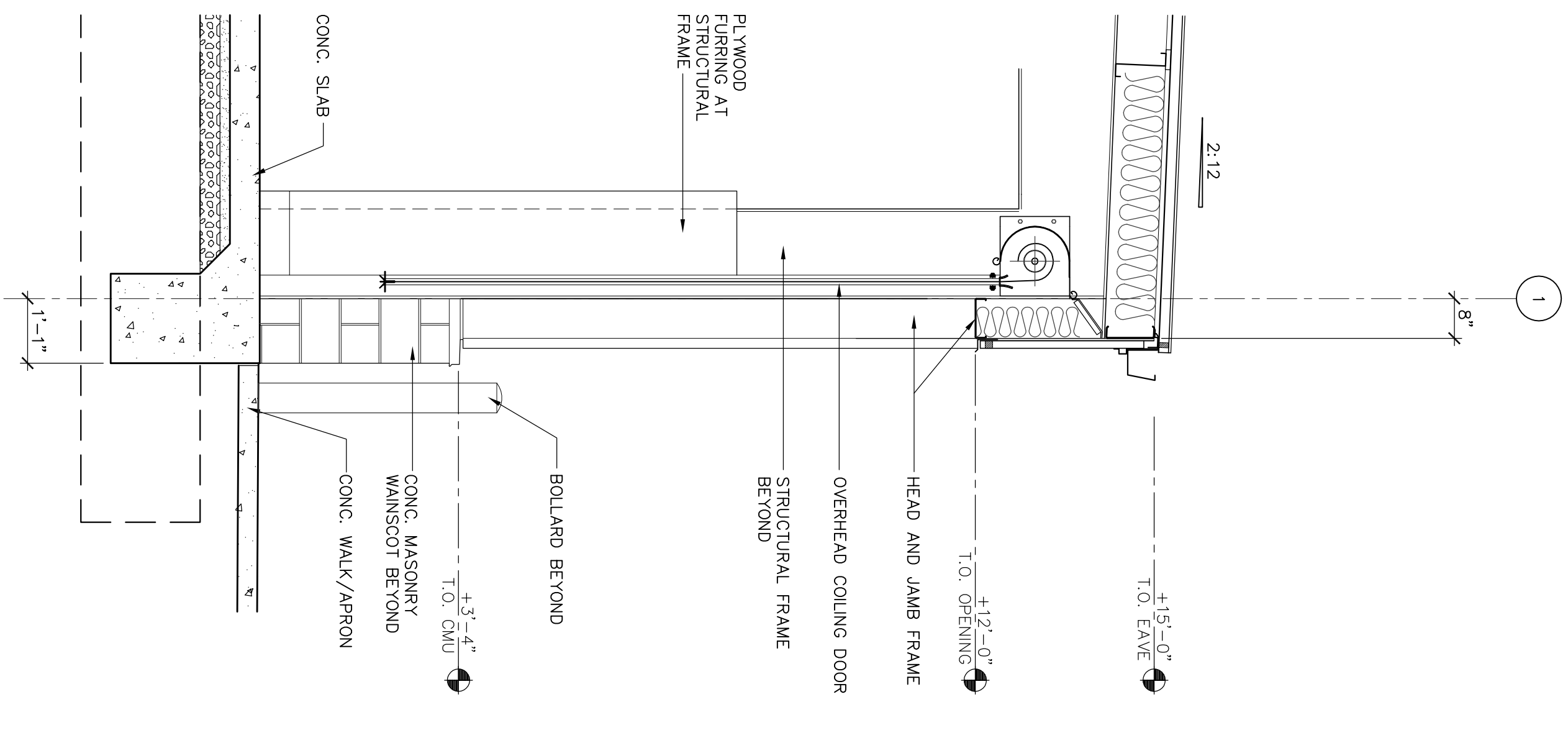
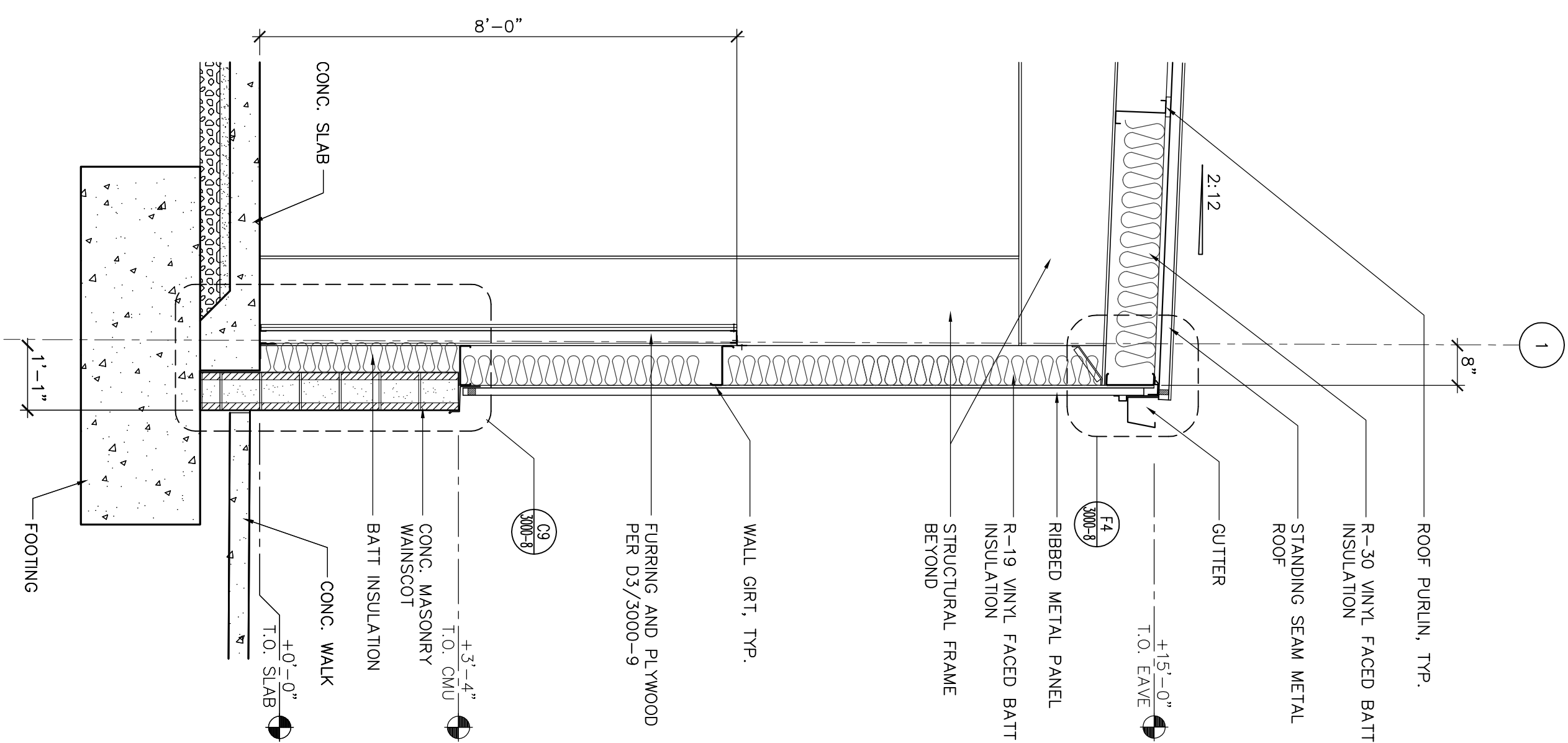
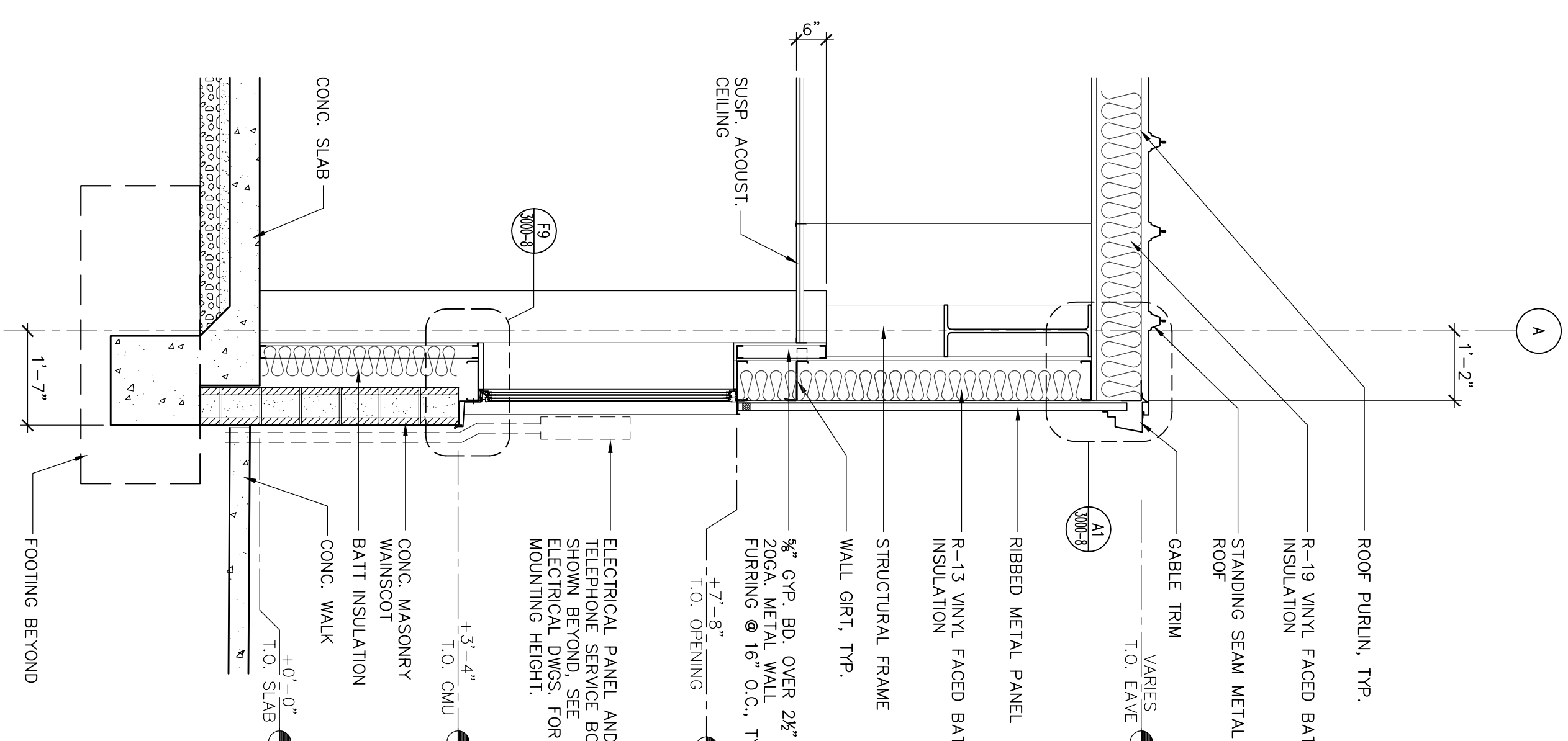
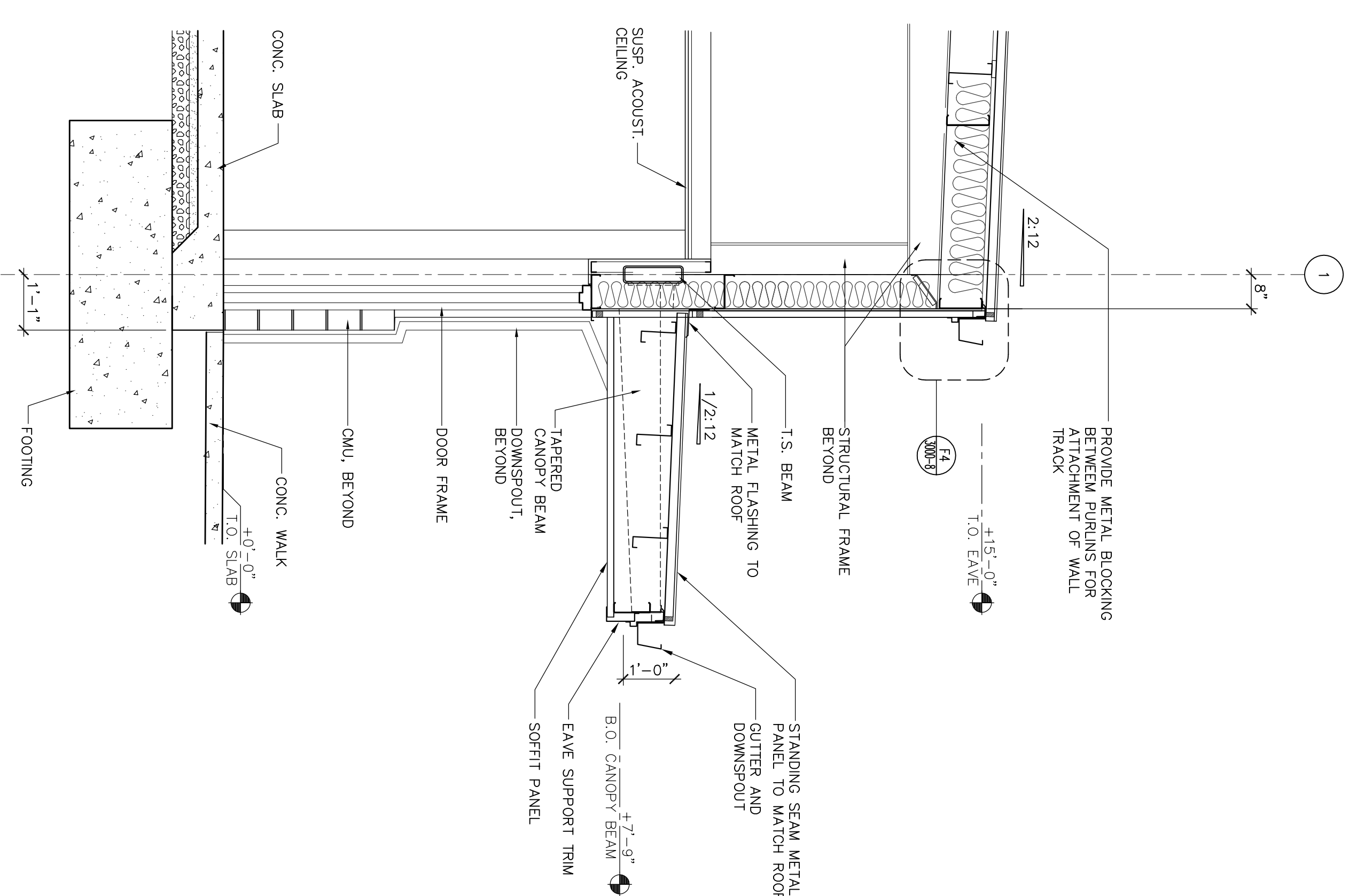


CONSTRUCTION DOCUMENTS

SECTION
FI
$$\overline{1/2'' = 1'-0''}$$

SECTION E3

 $1/2'' = 1'-0''$

SECTION

$$1/2^* = 1^*-0^*$$

SECTION

$$\overline{1/2^{\infty}} = 1'-0'$$

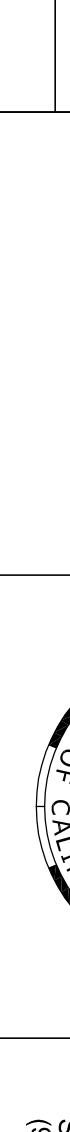
SECTION

$$1/2'' = 1'-0''$$

ADD ALTERNATE #1

CONSTRUCTION DOCUMENTS

| | |
|-----------------------------------|--------------------------------------------------------------------------------------------------|
| Discrimination List | 3540 FOLSOM BOULEVARD, SACRAMENTO, CA 95816 (916) 453-1234 |
| DREYFUS & BLACFORD | 11020 SUN CENTER DRIVE, RANCHO CORDOVA, CA 95670 (916) 851-3500 |
| CAPITAL ENGINEERING CONSULTANTS | 1796 TRIBUNE ROAD, SUITE 100 SACRAMENTO, CA (916) 641-5600 |
| ECOM ENGINEERING INC. | BIJULIER & BIJULIER STRUCTURAL ENGINEERS, INC. 95811 (916) 641-0303 |
| AVYMO) Owned Subsidiary of Jacobs | W.L. BURLE ENGINEERS, PA 111 S. WALLET STREET, GREENVILLE, MS 38702 (662) 332-2619 |
| Planning and the Environment | AQUA ENGINEERING, INC. 4803 INNOVATION DRIVE, FORT COLLINS, CO 80525 (970) 229-9668 |
| Stapleton Office, 544-300 | THE SIERRA WEST GROUP, LLC 2730 GATEWAY OAKS DRIVE, STE. 110 SACRAMENTO, CA 95833 (916) 925-4000 |
| Sacramento, California 95834 | |
| (916) 929-4323 Fax (916) 929-1772 | |



Carter-Burgess

AVYMO) Owned Subsidiary of Jacobs

Planning and the Environment

Stapleton Office, 544-300

Sacramento, California 95834

(916) 929-4323 Fax (916) 929-1772

| | |
|----------------|----------------------------------------------------------|
| Drawing Title | MAINTENANCE BUILDING SECTIONS |
| Project Title | LOUISIANA NATIONAL CEMETERY GRAVESITE EXPANSION PHASE 1B |
| Project No. | 870CJM3023B |
| Date: | MARCH 22, 2012 |
| Dwg. 87 of 137 | |

| | | | |
|-------------------------------------------------------|-----------------|------------------------------------------------|-------|
| Approved: Director, Office of Construction Management | Building Number | Directed | Drawn |
| Approved: Director, Project Management Service | | | WCS |
| | Location | LOUISIANA NATIONAL CEMETERY ZACHARY, LOUISIANA | |
| | | DRAWING NO. 3000-4 | |