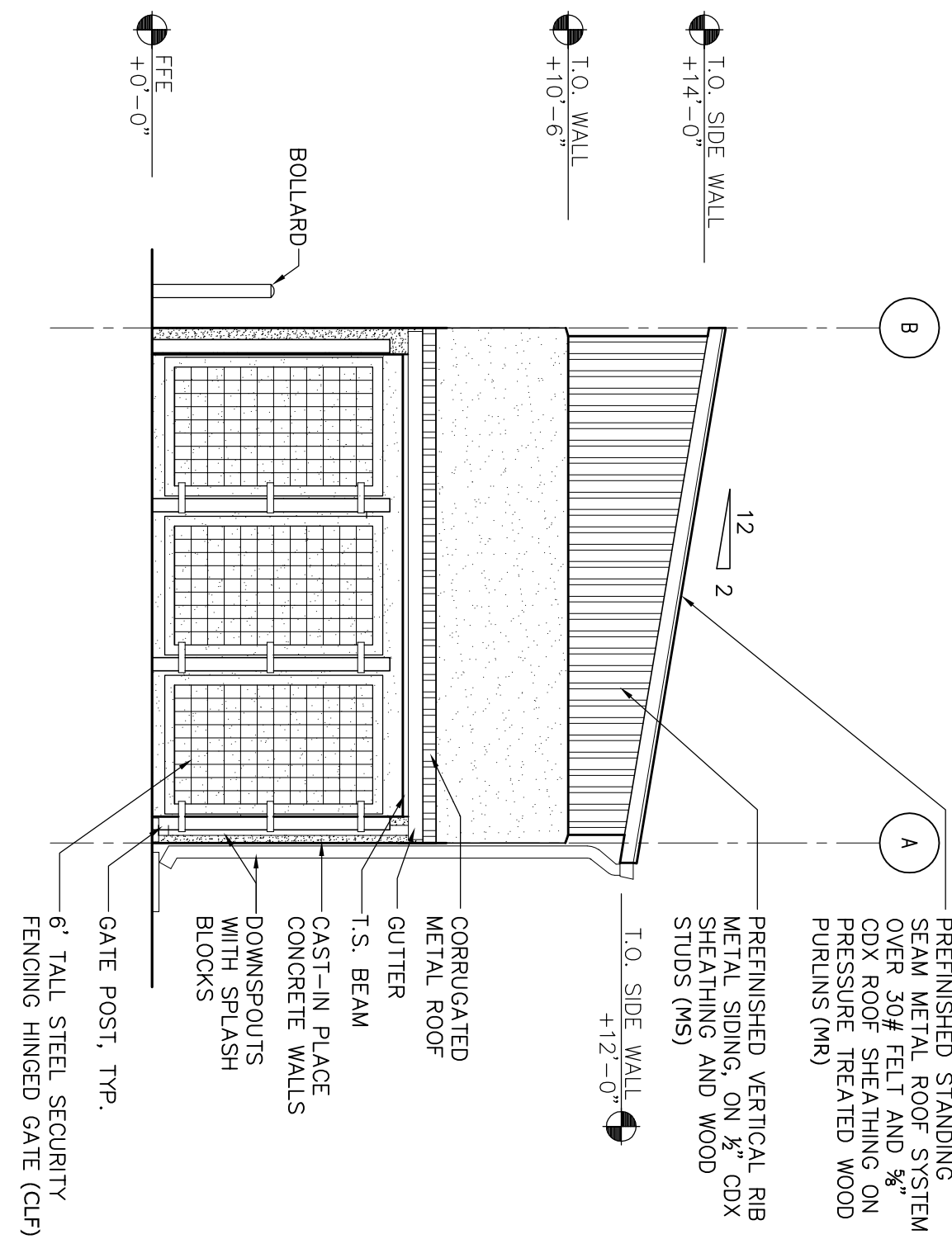
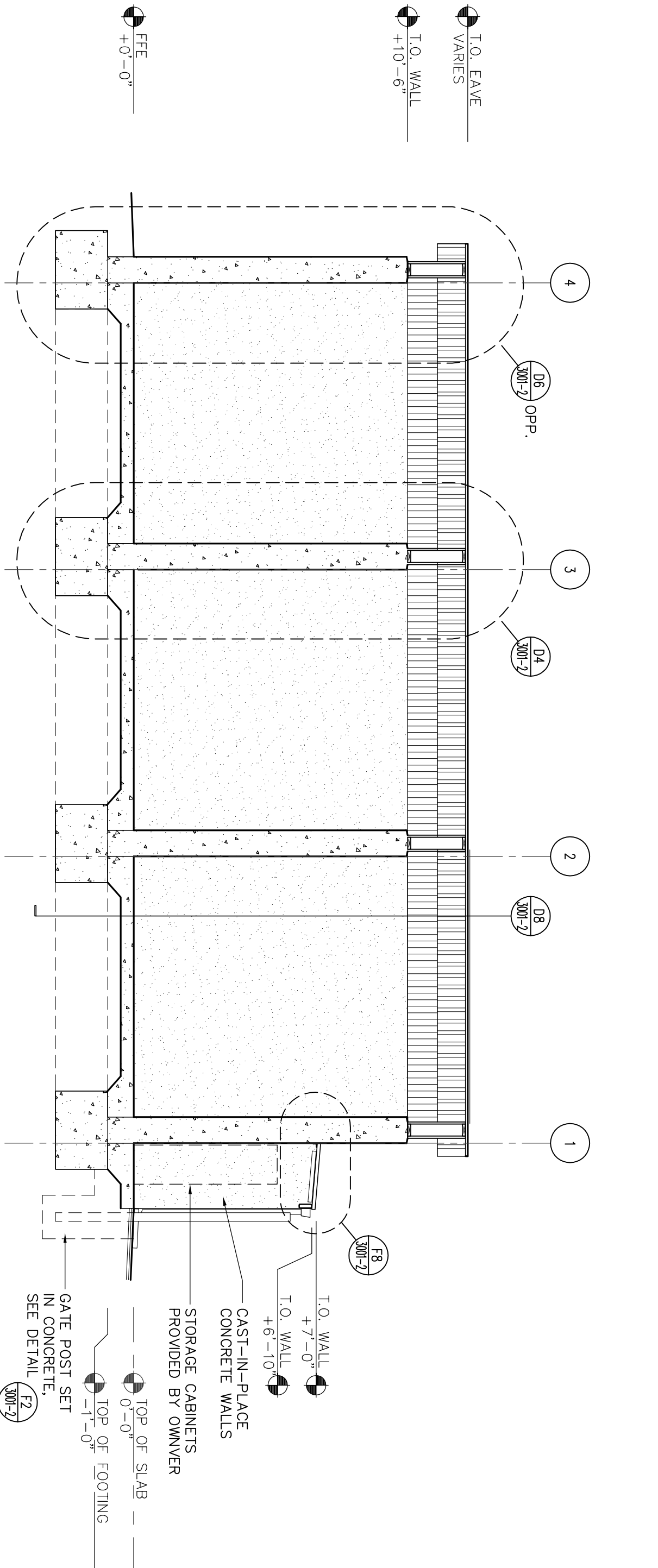


A FRONT ELEVATION

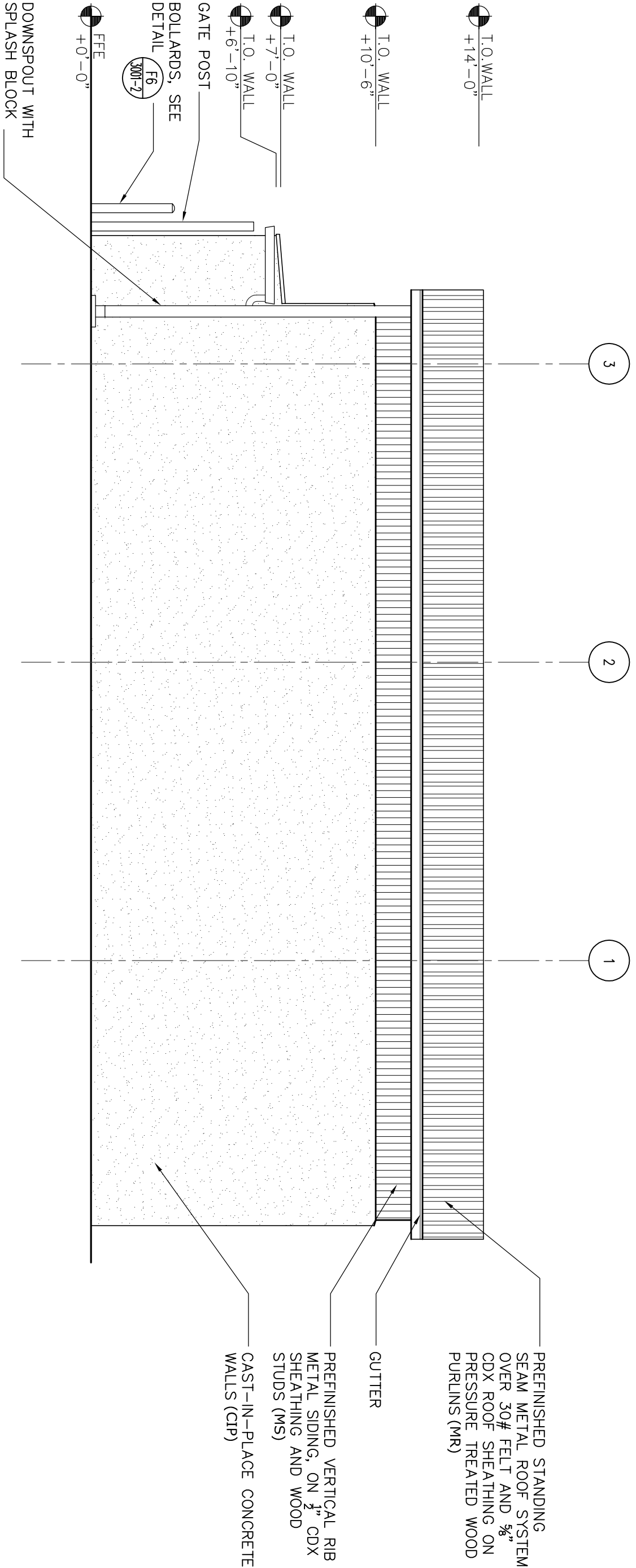


B RIGHT ELEVATION

- | | |
|-----|--|
| | BIDG. 3000 EXTERIOR FINISH LEND |
| | EXTERIOR WALL FINISH |
| CIP | Cast-in-place Concrete - No finish |
| CLF | Chim Link France (a bulk materials storage gates) - Painted Black |
| CMU | CMU = Split Face Pattern - Color to be selected by Architect from Manufacturer's standard colors. |
| MS | Metal Siding - Thermostating type finish - Color: Clay from Manufacturer's Standard Colors |
| | EXTERIOR ROOF FINISH |
| MR | Metal Roof - Thermostating type finish - Color: Taupe from Manufacturer's Standard Colors |
| | EXTERIOR OPENINGS FINISHES |
| P6 | Exterior paint color at Muller's House, France, and openings
- Color: Only to match exterior siding color to base selected by Architect - Semi-gloss finish |




C BUILDING SECTION



D BACK ELEVATION

<p>Cater-Burgess A Family Owned Subsidiary of Jacobs Engineering and the Environment</p> <p>Statement Office: Suite 300 Sierra West Group, Inc. 80555 1772 (916) 928-3223 Fax (916) 928-1772</p>	<p>SierraWest, Ltd.</p> <p>DREYFUS & BLOCK CAPITAL ENGINEERING CONSULTANTS ECOM ENGINEERING INC. BUHLER & BUHLER STRUCTURAL ENGINEERS, INC. W. L. BURLE ENGINEERS, PA AQUA ENGINEERING, INC. THE SIERRA WEST GROUP, LLC</p> <p>3540 FOLSOM BOULEVARD, SACRAMENTO, CA 95816 (916) 453-1234 11020 SUN CENTER DRIVE, RANCHO CROYOVA, CA 95670 (916) 851-3500 1796 TRIBUTE ROAD, SUITE 100 SACRAMENTO, CA (916) 641-5600 611 S. WALNUT STREET, STE. 200, SACRAMENTO, CA 95811 (916) 443-0303 4801 INNOVATION DRIVE, FORT COLLINS, CO 80525 (970) 229-9668 2730 GATEWAY OAKS DRIVE, STE. 110 SACRAMENTO, CA 95833 (916) 925-4000</p>
---	---



NATIONAL
C E M E T E R Y
A D M I N I S T R A T I O N

Drawing Title	BULK MATERIALS STORAGE ELEVATIONS AND SECTION
Approved: Director, Office of Construction Management	
Approved: Director, Project Management Service	

Project Title	LOUISIANA NATIONAL CEMETERY GRAVEBSITE EXPANSION PHASE 1B		
Building Number	Checked	Drawn	
		WCS	
Location	LOUISIANA NATIONAL CEMETERY ZACHARY, LOUISIANA		

Date:
MARCH 22, 2012

Project No.
870CM3023B

DRAWING NO.
3001-1

Dwg. 94 of 137

ADD ALTERNATE #2

CONSTRUCTION DOCUMENTS