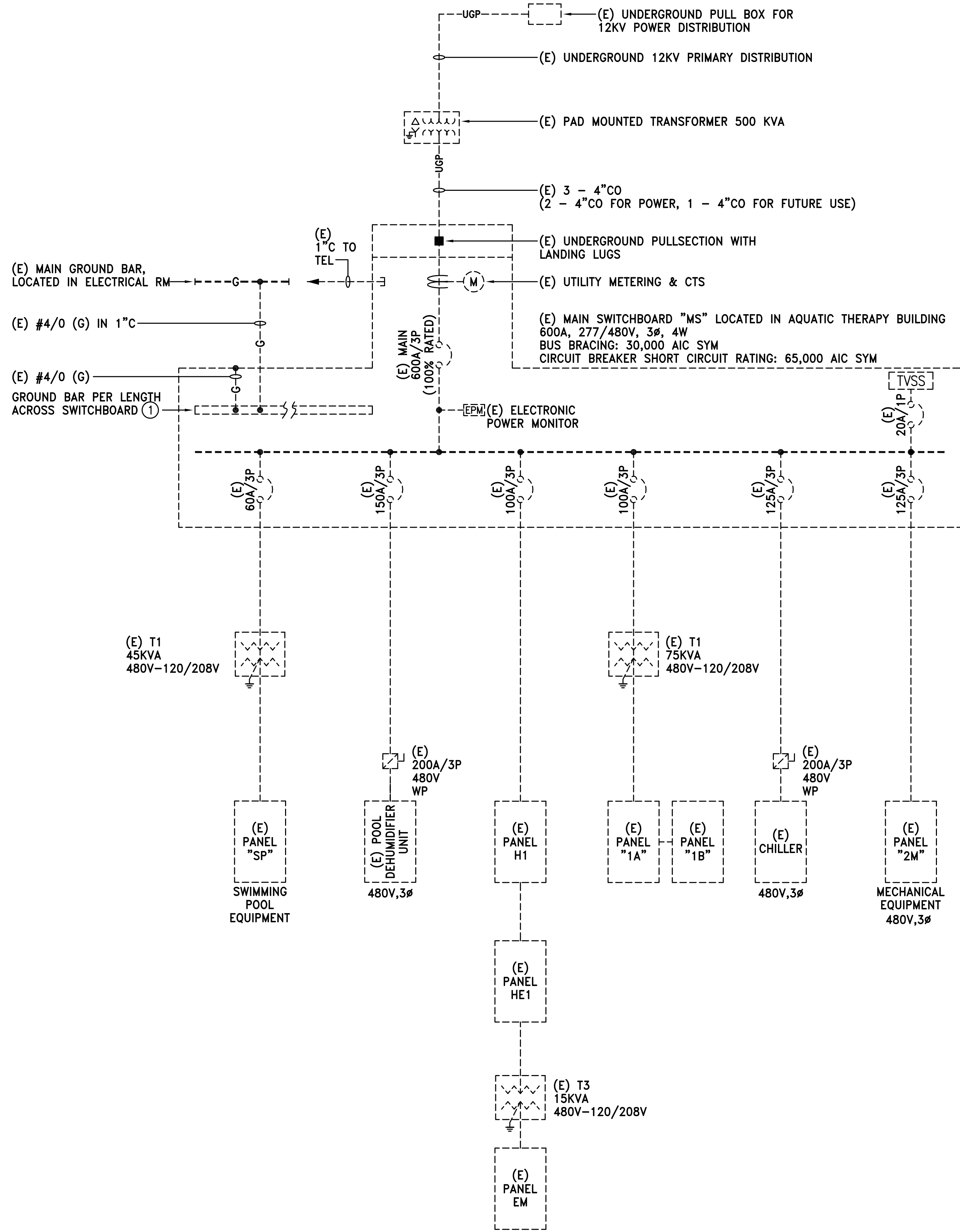


**Office of
Construction
and Facilities
Management**

 Department of
Veterans Affairs



1 SINGLE LINE DIAGRAM - EXISTING (FOR REFERENCE ONLY)

(E) PANEL H1											
LIGHTING LOAD AT 125%		30.5	KVA	SECTION	1	NEUTRAL BUS:		100%			
TOTAL CONNECTED RECEPTACLE LOAD		15.0	KVA	VOLTAGE	480/277	GROUND BUS:		100%			
RECEPT. LOAD FIRST 10 KVA AT 100%		10.0	KVA	SYSTEM	3	ISOLATED GND BUS:		NO			
REMAINING RECEPT. LOAD AT 50%		2.5	KVA	MAINS	25	AIC RATING:		22KAIC			
MOTOR LOAD AT 125% HIGHEST + REMAINING		0.0	KVA	MTG:	SURFACE	NEMA ENCLOSURE:		1			
TOTAL APPLIANCE LOAD AT 100%		0.0	KVA	FEED:	BOTTOM	MAIN BREAKER:		MLO			
LOAD											
TYPE	DESCRIPTION	VA	AMPS	P	CB	PH	CT	AMP	LOAD	TYPE	
L	(E) LCP	200	20	1	1	A	2	20	1	1100	
(E) SPARE		20	1	3	B	4	20	1	1100	(E) POOL. CEILING LIGHTS	
(E) SPARE		20	1	5	C	6	20	1	1100	(E) POOL. CEILING LIGHTS	
(E) SPARE		20	1	7	A	8	20	1	1100	(E) SPARE	
(E) SPARE		20	1	9	B	10	20	1	1000	(E) SPARE	
(E) SPARE		20	1	11	C	12	20	1		(E) SPARE	
L	(E) LOBBY CEILING SOFFIT	1300	20	1	13	A	14	20	1	(E) SPARE	
L	(E) LIGHTS MECH 201	600	20	1	15	B	16	20	1	(E) SPARE	
L	(E) LOBBY CEILING	600	20	1	17	C	18	20	1	(E) SPARE	
L	(E) CANOPY LIGHTS	300	20	1	19	A	20	20	1	2200	
L	(E) LIGHTING 101, 103, 109	1000	20	1	21	B	22	20	1	700	
L	(E) MEN'S LOCKER ROOM	1500	20	1	23	C	24	20	1	2200	
L	(E) MEN'S SHOWERS	1400	20	1	25	A	26	20	1	1300	
L	(E) LIGHTING 1ST FLOOR MECH	1000	20	1	27	B	28	20	1	(E) SPARE	
L	(E) WOMEN'S LOCKER ROOM	1000	20	1	29	C	30	20	1	(E) SPARE	
(E) SPARE		20	1	31	A	32	20	1		(E) SPARE	
(E) SPARE		20	1	33	B	34	20	1	1000	(E) EXTERIOR LIGHTING	
(E) SPARE		20	1	35	C	36	20	1	900	(E) EXTERIOR LIGHTING	
R	(E) PANEL HE1	5000	50	3	37	A	38	20	1	1300	
R		5000	50	3	39	B	40	20	1	1300	
R		5000	50	3	41	C	42	20	1	1300	
LOAD SUMMARY:											
CONNECTED LOAD - PHASE "A"		14.1	KVA	HIGHEST MOTOR LOAD		VA					
CONNECTED LOAD - PHASE "B"		12.7	KVA	1. PROVIDE GFCI CIRCUIT BREAKERS							
CONNECTED LOAD - PHASE "C"		12.8	KVA	2. PROVIDE LOCKOUT DEVICE FOR CIRCUIT BREAKERS							
CONNECTED LOAD - ALL PHASES		39.4	KVA	3. CIRCUIT INTERLOCK TO TIMELOCK							
TOTAL DEMAND LOAD		43.0	KVA								
		52	AMPS	(LOAD TYPE: L = LIGHTING, R = RECEPTACLE, M = MOTOR, O = OTHER EQUIPMENT)							

- ① VIA PHOTOCELL AND LIGHTING CONTROL PANEL "LCP" IN AQUATIC THERAPY BUILDING ELECTRICAL ROOM
- ② CONTRACTOR SHALL VERIFY PANEL AND PROVIDE TYPED-WRITTEN UPDATED/CORRECTED PANEL DIRECTORIES WITHIN EACH PANEL.

(E) PANEL 1B												
LIGHTING LOAD AT 125%		0.0	KVA	SECTION	1	NEUTRAL BUS:			100%			
TOTAL CONNECTED RECEPTACLE LOAD		6.3	KVA	VOLTAGE	208/120	GROUND BUS:			100%			
RECEIPT. LOAD FIRST 10 KVA AT 100%		6.3	KVA	SYSTEM	3	ISOLATED GND BUS:			NO			
REMAINING RECEIPT. LOAD AT 50%		0.0	KVA	MAINS	225	AIC RATING:			10KAIC			
MOTOR LOAD AT 125% HIGHEST + REMAINING		3.4	KVA	MTG	SURFACE	NEMA ENCLOSURE:			1			
TOTAL APPLIANCE LOAD AT 100%		0.0	KVA	FEED	LUGS	MAIN BREAKER:			MLO			
LOAD												
TYPE	DESCRIPTION	VA	AMPS	P	CB	PH	CT	AMP	P	VA	DESCRIPTION	TYPE
R	(E) EF-2	700	20	1	1	A	2	20	1		(E) SPARE	
R	(E) EF-4	700	20	1	3	B	4	20	1	700	(E) EF-6	R
	(E) SPARE				5	C	6	20	1		(E) SPARE	
R	(E) EF-5	700	20	1	7	A	8	20	1		(E) SPARE	
	(E) SPARE				9	B	10	20	1	500	(E) CP#1 H2O CIRC PUMP	
	(E) SPARE				11	C	12	20	2	1700	(E) ACCU-1/FCU-1	M
	(E) SPARE				13	A	14	20	1	1700	↓	M
	(E) SPARE				15	B	16	20	1		(E) SPARE	
	(E) SPARE				17	C	18	20	1		(E) SPARE	
	(E) SPARE				19	A	20	20	1	720	EXTERIOR RECEPTALES	R
	(E) SPARE				21	B	22	20	1	900	EXTERIOR RECEPTALES	R
	(E) SPARE				23	C	24	20	1	1000	EXTERIOR PULLBOX	
	(E) SPARE				25	A	26	20	1		(E) SPARE	
	(E) SPARE				27	B	28	20	1		(E) SPARE	
	(E) SPARE				29	C	30	20	1		(E) SPARE	
	(E) SPARE				31	A	32	20	1	400	EXTERIOR DISPLAY	R
	(E) SPARE				33	B	34	20	1		(E) SPARE	
	(E) SPARE				35	C	36	20	1		(E) SPARE	
	(E) SPARE				37	A	38	20	1		(E) SPARE	
	(E) SPARE				39	B	40	20	1		(E) SPARE	
	(E) SPARE				41	C	42	20	1		(E) SPARE	
LOAD SUMMARY:												
CONNECTED LOAD - PHASE "A"		4.2	KVA	HIGHEST MOTOR LOAD		VA						
CONNECTED LOAD - PHASE "B"		2.8	KVA	1. PROVIDE GFCI CIRCUIT BREAKERS								
CONNECTED LOAD - PHASE "C"		2.7	KVA	2. PROVIDE LOCKOUT DEVICE FOR CIRCUIT BREAKERS								
CONNECTED LOAD - ALL PHASES		9.7	KVA	3. CIRCUIT INTERLOCK TO TIMELOCK								
TOTAL DEMAND LOAD		9.7	KVA									
		27	AMPS									
(LOAD TYPE: L = LIGHTING, R = RECEPTACLE, M = MOTOR, O = OTHER EQUIPMENT)												

- ③ CONTRACTOR SHALL VERIFY PANEL AND PROVIDE TYPED-WRITTEN UPDATED/CORRECTED PANEL DIRECTORIES WITHIN EACH PANEL.

Revisions

Date

CONSULTANTS:

F. W. A. S. ASSOCIATES, INC.

330 FRANKLIN, SUITE 400, OAKLAND, CA 94607
PHONE: (510) 763-7475 FAX: (510) 763-7033

ARCHITECT/ENGINEERS:

MEI

239 9TH STREET SAN FRANCISCO, CA 94113
T: (415) 703-0326 F: (415) 707-6328 www.meiarchitects.com

Drawing Title
SINGLE LINE DIAGRAM AND PANEL SCHEDULES

Approved Project Director

Project Title
RENOVATE CANTEN PLAZA BUILDING 101

Location
3801 Miranda Ave. Palo Alto, CA 94304

Date
MAY 16, 2014

Checked
SJ/MF

Drawn
FWA TEAM

Project Number
640-12-124P

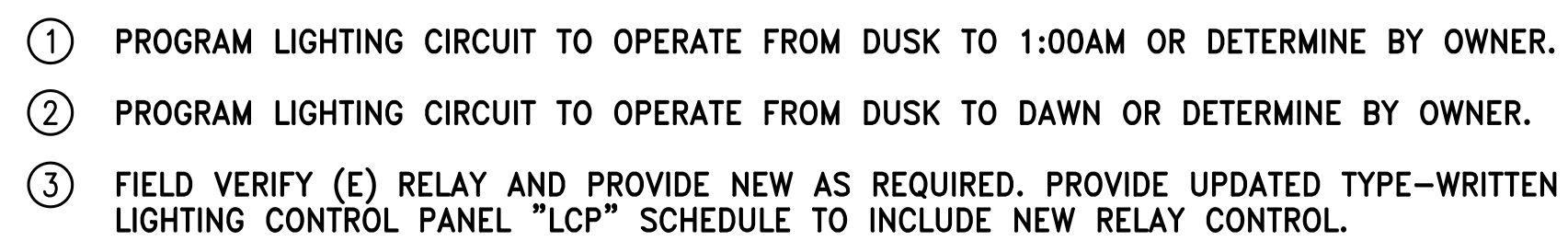
Building Number
101

Drawing Number
E3.1

Dwg. of

Office of Construction and Facilities Management

Department of Veterans Affairs

VA FORM 08-6231