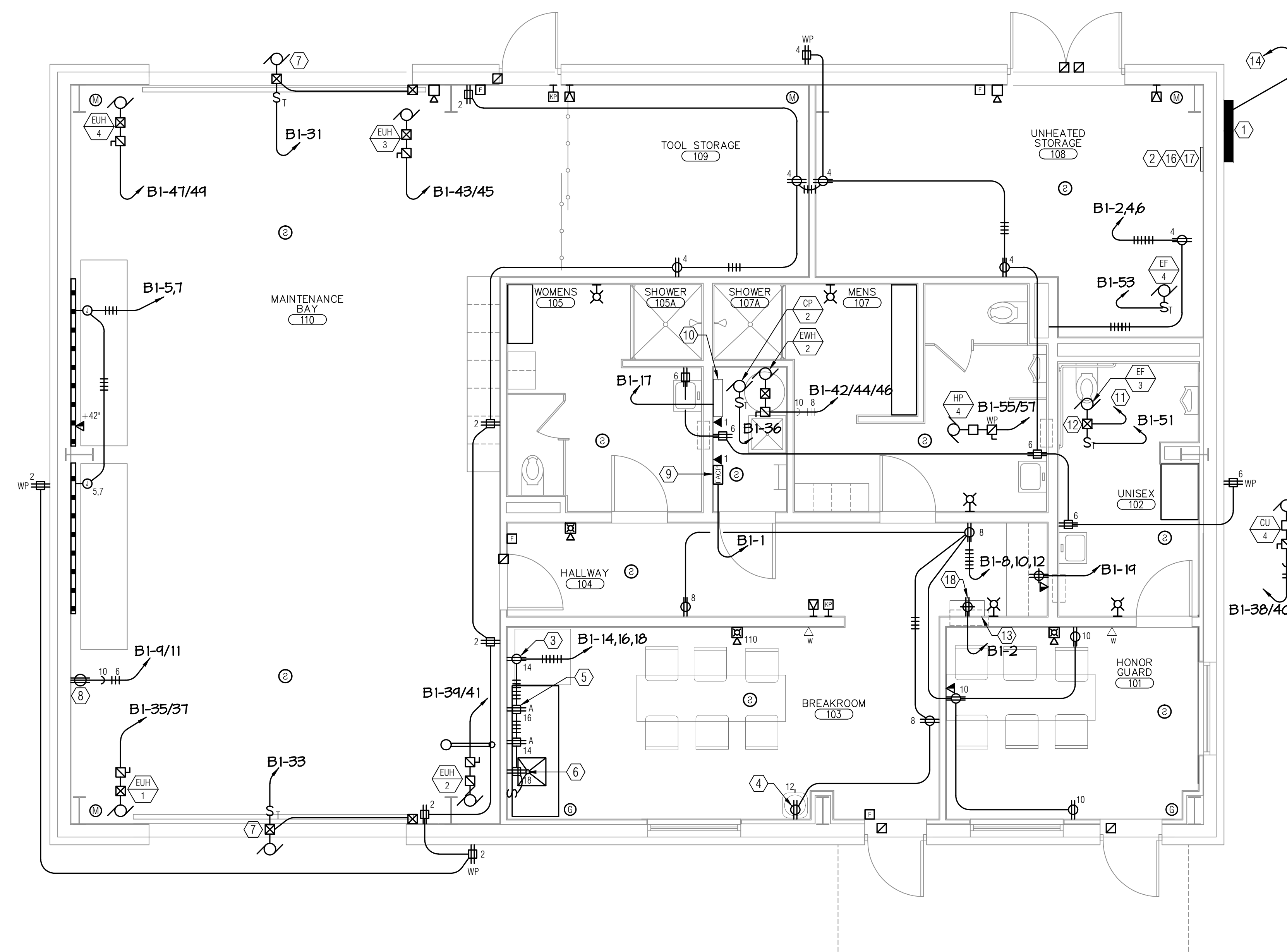


## SHEET NOTES

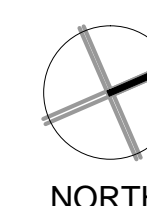
1. MULTI-WIRE BRANCH CIRCUITS ARE NOT ALLOWED  
EACH UNGROUNDED SINGLE POLE CIRCUIT SHALL  
HAVE A SEPARATE NEUTRAL CONDUCTOR.




## NUMBERED NOTES

- ① PANEL 'B1' (2-SECTION).
- ② (2) 1 1/2" CONDUITS TO NETWORK EQUIPMENT CABINET.
- ③ REFRIGERATOR, 120V.
- ④ WATER COOLER, 120V.
- ⑤ MICROWAVE, 120V.
- ⑥ GARBAGE DISPOSAL, 120V.
- ⑦ MOTORIZED DOOR, 120V - PROVIDE CONDUIT & WIRING FOR CONTROLS & LIMIT SWITCH.
- ⑧ WELDER (VERIFY REQ'D NEMA OUTLET CONFIGURATION AND POWER REQUIREMENTS WITH OWNER).
- ⑨ FIRE ALARM CONTROL PANEL.
- ⑩ INTRUSION ALARM PANEL.
- ⑪ 1" CONDUIT FOR LOW VOLTAGE CONTROL WIRES. CONNECT TO HP-4.
- ⑫ SWITCH WITH LIGHTS. SEE EF CONTROL DIAGRAM ON 2/E7.
- ⑬ REMOTE NETWORK EQUIPMENT CABINET. SEE 4/E-5 FOR DETAIL.
- ⑭ PROVIDE 1 1/2" CONDUIT TO ROOF FOR FUTURE SOLAR PANEL.
- ⑮ NOT USED.
- ⑯ TELECOMMUNICATIONS ENTRY BACKBOARD. 4'x8' PLYWOOD BACKBOARD. SPLICE POINT LOCATION FOR 25-1R AND 2-STRAND FIBER TRANSITION. GROUND ARMORED CABLE AT TELECOMMUNICATIONS GROUNDING BUS BAR.
- ⑰ TELECOMMUNICATIONS GROUNDING BUS BAR. MOUNT ABOVE SPLICE LOCATION.
- ⑱ RECEPTACLE LOCATED INSIDE CABINET. SEE 4/E-5 FOR DETAIL.



**1 MAINTENANCE BUILDING FLOOR PLAN - POWER & SIGNAL (ADD ALTERNATE #1)**  
SCALE: 1/4"=1'-0"



				 <p><b>ECOM ENGINEERING, INC.</b> 1796 TRIBUTE ROAD, SUITE 100 SACRAMENTO, CA 95815 916.641.5600 916.641.1640 FAX www.ecomeng.com</p> <p>JOH N MARK 10E286.00 PW MARK DESIGNER: CHERYL</p>		<p><b>Carter Burgess</b> A Wholely Owned Subsidiary of Jacobs</p> <p>Consultants in Architecture, Engineering, Planning, and the Environment</p> <p><b>Sacramento Office</b> 180 Promenade Circle, Suite 300 Sacramento, California 95814 (916) 929-3323 Fax (916) 929-1772</p>		<p>Subconsultant List</p> <table><tr><td>DREYFUSS &amp; BLACKFORD</td><td>3540 FOLSOM BOULEVARD, SACRAMENTO, CA 95816 (916) 453-1234</td></tr><tr><td>CAPITAL ENGINEERING CONSULTANTS</td><td>11020 SUN CENTER DRIVE, RANCHO CORDOVA, CA 95670 (916) 851-3500</td></tr><tr><td>ECOM ENGINEERING INC.</td><td>1796 TRIBUTE ROAD, SUITE 100 SACRAMENTO, CA (916) 641-5600</td></tr><tr><td>BUEHLER &amp; BUEHLER STRUCTURAL ENGINEERS, INC.</td><td>600 Q STREET, STE. 200, SACRAMENTO, CA 95811 (916) 443-0303</td></tr><tr><td>W.L. BURLE ENGINEERS, PA</td><td>111 S. WALNUT STREET, GREENVILLE, MS 38702 (662) 332-2619</td></tr><tr><td>AQUA ENGINEERING, INC.</td><td>4803 INNOVATION DRIVE, FORT COLLINS, CO 80525 (970) 229-9668</td></tr><tr><td>THE SIERRA WEST GROUP, LLC</td><td>2730 GARDEN OAKS DRIVE, STE. 110 SACRAMENTO, CA. 95833 (916) 925-4000</td></tr></table>		DREYFUSS & BLACKFORD	3540 FOLSOM BOULEVARD, SACRAMENTO, CA 95816 (916) 453-1234	CAPITAL ENGINEERING CONSULTANTS	11020 SUN CENTER DRIVE, RANCHO CORDOVA, CA 95670 (916) 851-3500	ECOM ENGINEERING INC.	1796 TRIBUTE ROAD, SUITE 100 SACRAMENTO, CA (916) 641-5600	BUEHLER & BUEHLER STRUCTURAL ENGINEERS, INC.	600 Q STREET, STE. 200, SACRAMENTO, CA 95811 (916) 443-0303	W.L. BURLE ENGINEERS, PA	111 S. WALNUT STREET, GREENVILLE, MS 38702 (662) 332-2619	AQUA ENGINEERING, INC.	4803 INNOVATION DRIVE, FORT COLLINS, CO 80525 (970) 229-9668	THE SIERRA WEST GROUP, LLC	2730 GARDEN OAKS DRIVE, STE. 110 SACRAMENTO, CA. 95833 (916) 925-4000	 <p>NATIONAL CEMETERY ADMINISTRATION</p>		<p>Drawing Title</p> <p><b>MAINTENANCE BUILDING FLOOR PLAN – POWER &amp; SIGNAL</b></p> <p>Approved: Director, Office of Construction Management</p> <p>Approved: Director, Project Management Service</p>		<p>Project Title</p> <p>LOUISIANA NATIONAL CEMETERY GRAVESITE EXPANSION PHASE 1B</p> <p>Building Number</p> <p>Checked <b>MSS</b></p> <p>Drawn <b>BS</b></p> <p>Location LOUISIANA NATIONAL CEMETERY ZACHARY, LOUISIANA</p>		<p>Date: MARCH 22, 2012</p> <p>Project No. 870CM3023B</p> <p>DRAWING NO. <b>3000-E2</b></p> <p>Dwg. 137 Of 137</p>	
DREYFUSS & BLACKFORD	3540 FOLSOM BOULEVARD, SACRAMENTO, CA 95816 (916) 453-1234																														
CAPITAL ENGINEERING CONSULTANTS	11020 SUN CENTER DRIVE, RANCHO CORDOVA, CA 95670 (916) 851-3500																														
ECOM ENGINEERING INC.	1796 TRIBUTE ROAD, SUITE 100 SACRAMENTO, CA (916) 641-5600																														
BUEHLER & BUEHLER STRUCTURAL ENGINEERS, INC.	600 Q STREET, STE. 200, SACRAMENTO, CA 95811 (916) 443-0303																														
W.L. BURLE ENGINEERS, PA	111 S. WALNUT STREET, GREENVILLE, MS 38702 (662) 332-2619																														
AQUA ENGINEERING, INC.	4803 INNOVATION DRIVE, FORT COLLINS, CO 80525 (970) 229-9668																														
THE SIERRA WEST GROUP, LLC	2730 GARDEN OAKS DRIVE, STE. 110 SACRAMENTO, CA. 95833 (916) 925-4000																														
Revisions		Date																													