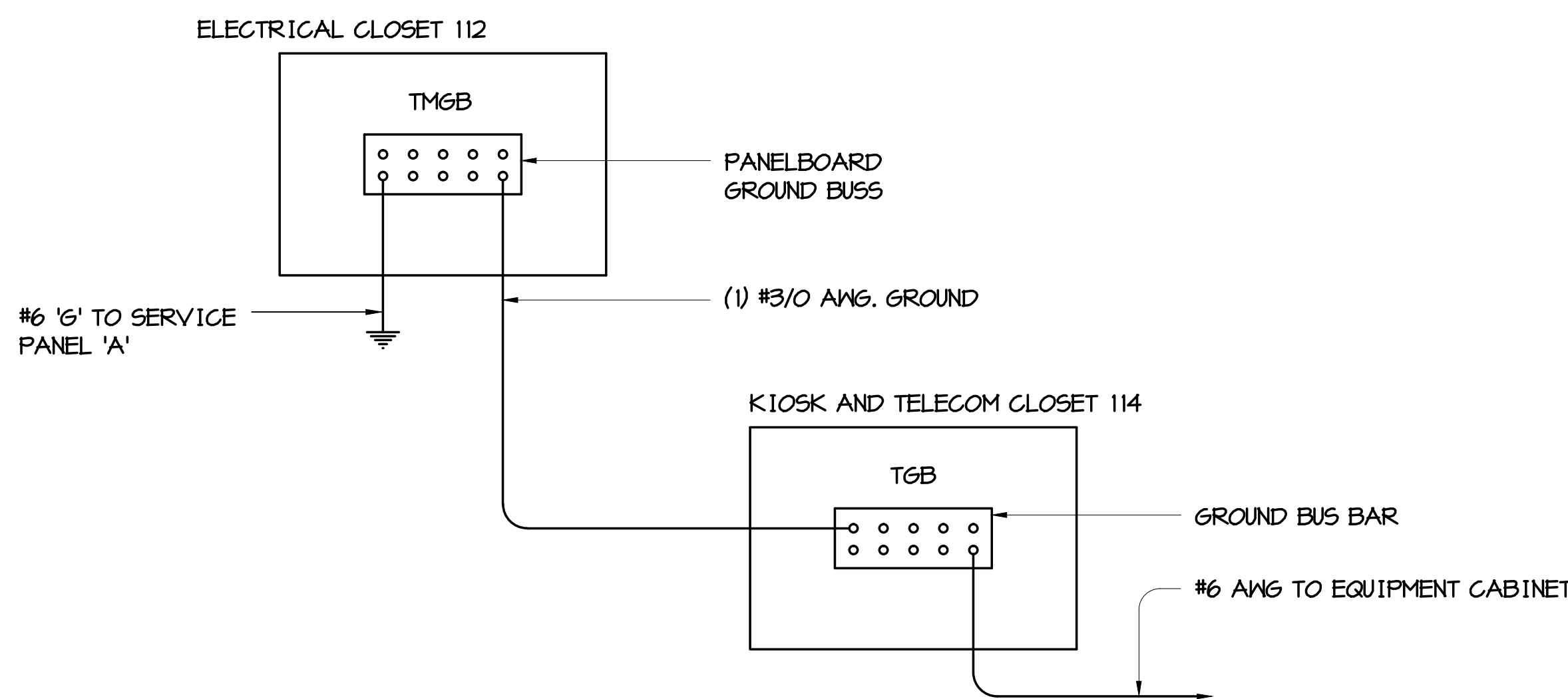
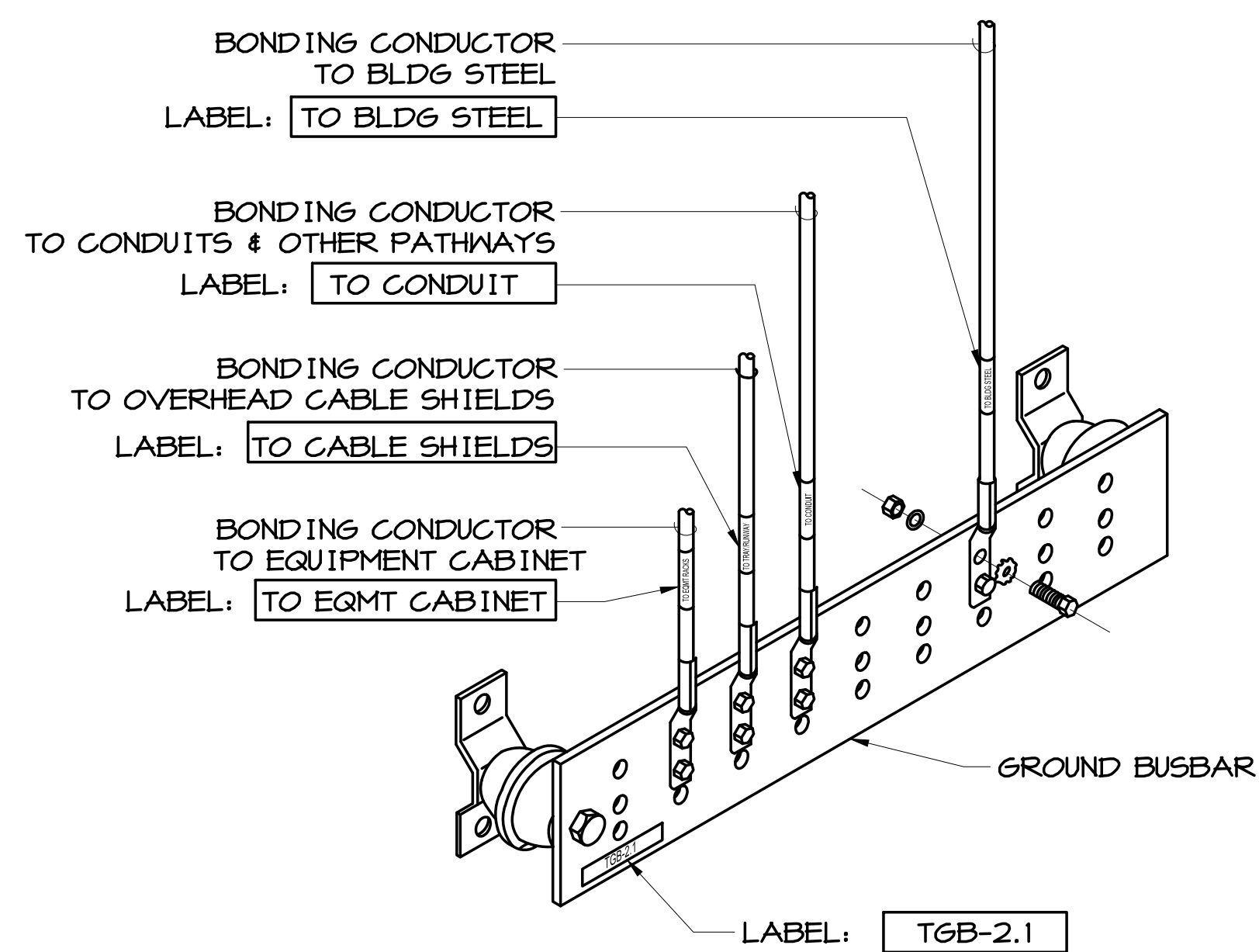


1 WALL MOUNT EQUIPMENT RACK MOUNTING DETAIL (IDF)  
NO SCALE

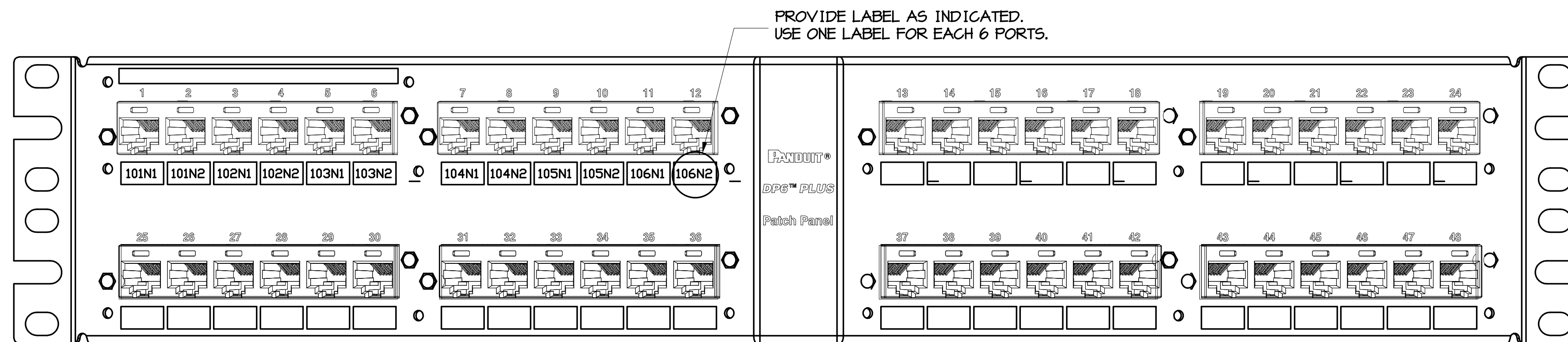


3 GROUNDING DIAGRAM - ADMINISTRATION BUILDING  
NO SCALE

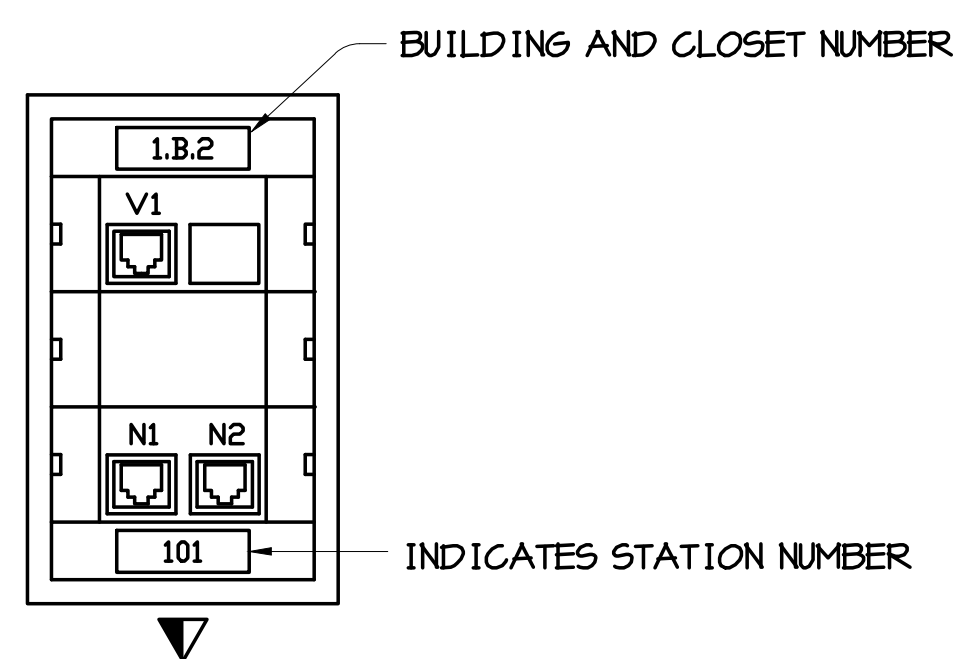


NOTES: REFER TO ROOM PLANS FOR BUSBAR MOUNTING LOCATION.  
REFER TO GROUNDING RISER DIAGRAM FOR LIST OF EQUIPMENT REQUIRING GROUNDING.

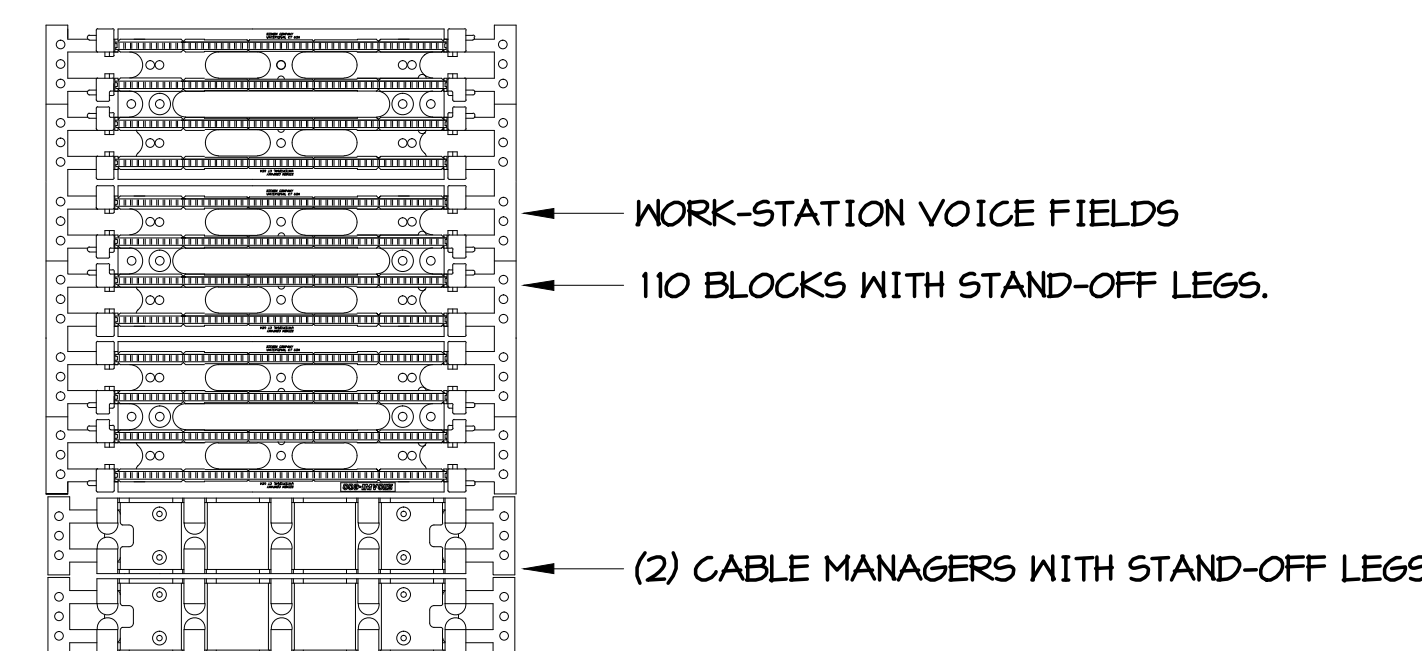
6 GROUND BUS BAR DETAIL  
NO SCALE



2 DATA PATCH PANEL LABELING DETAIL- TYPICAL  
NO SCALE



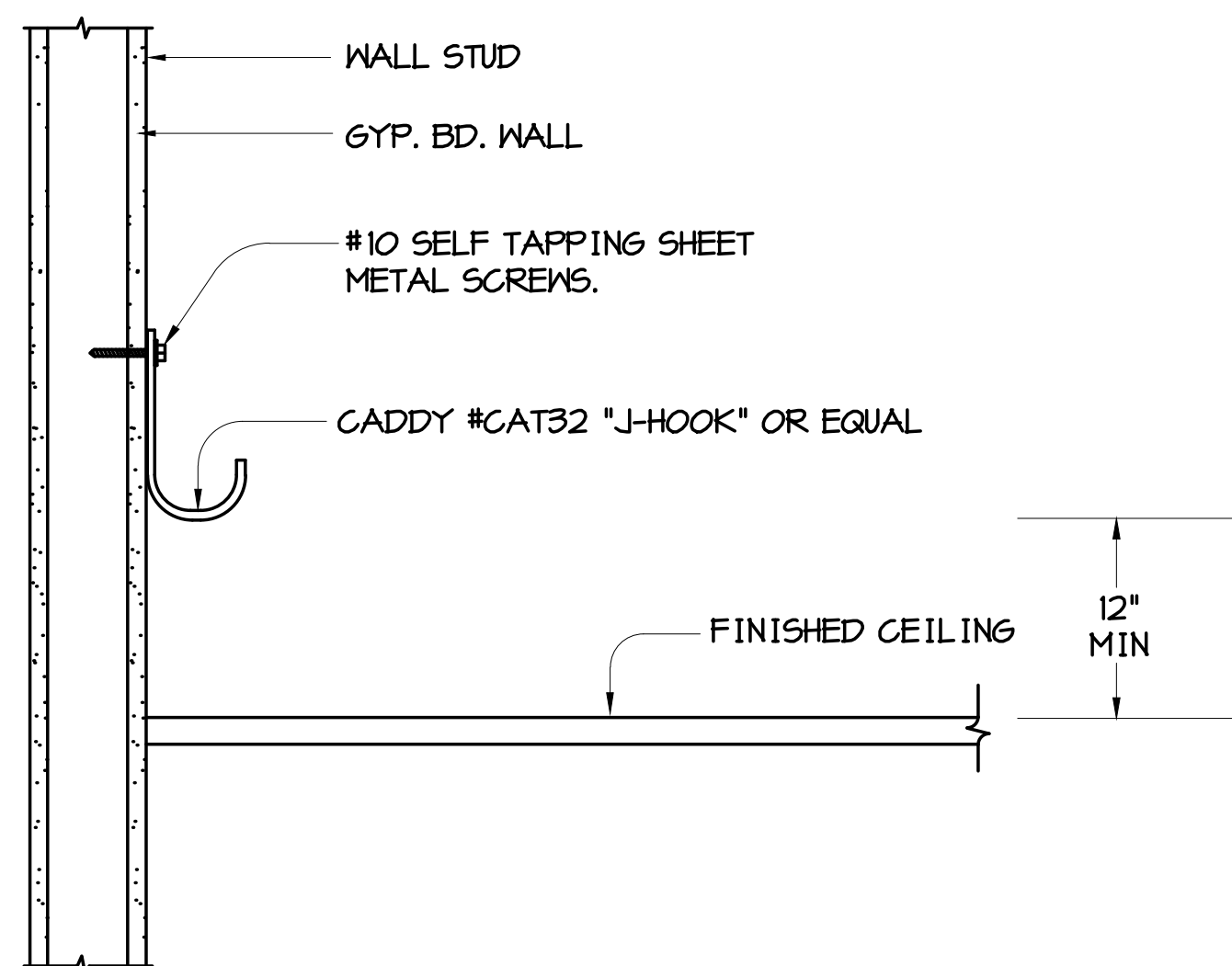
4 WALL MOUNTED OUTLET DESIGNATION DETAIL - TYPICAL  
NO SCALE



101V1	102V1	103V1	104V1	105V1	106V1
107V1	108V1	109V1	110V1	111V1	112V1

VOICE FRAME DESIGNATION DETAIL

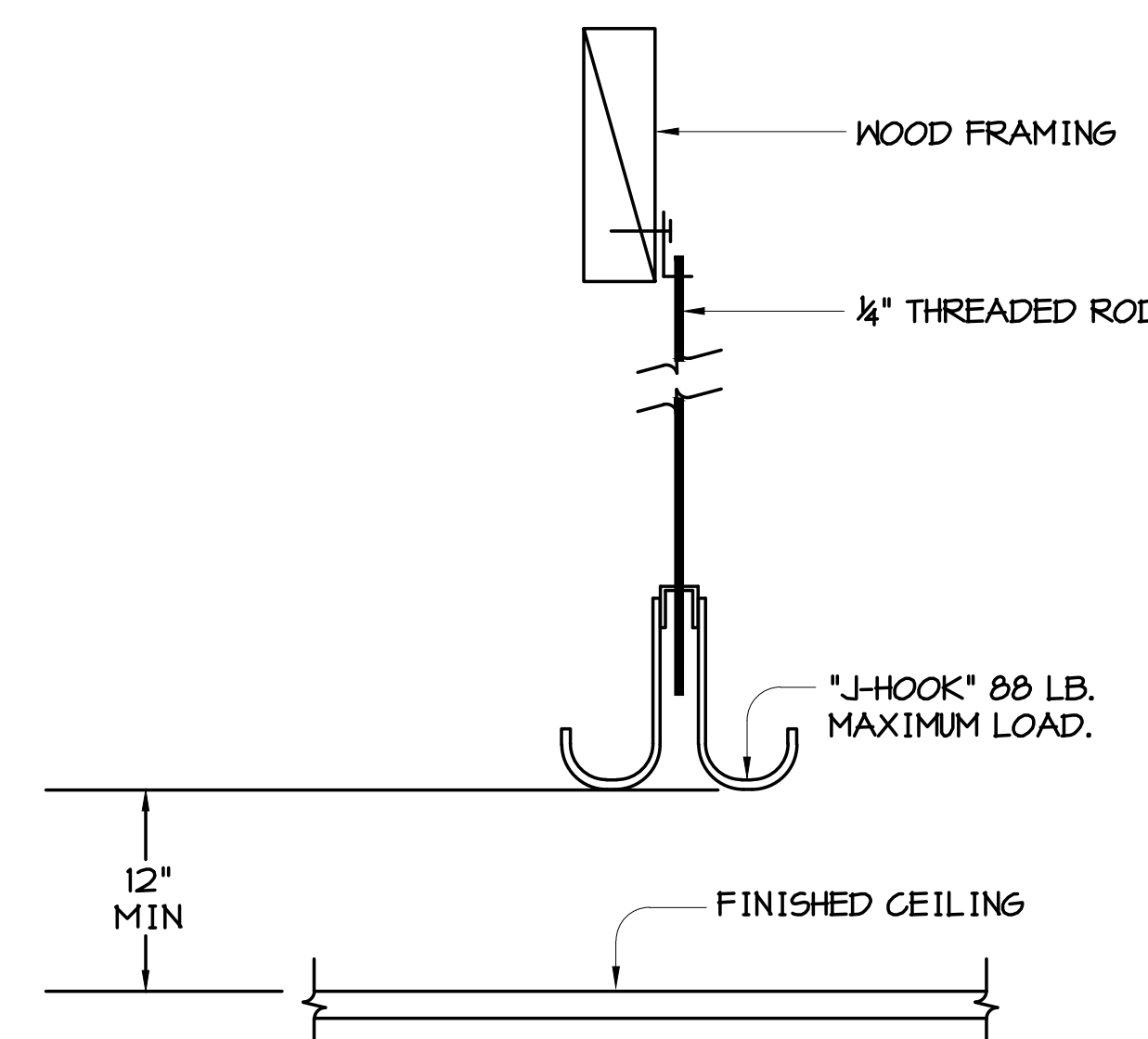
5 VOICE FRAME AND LABELING DETAIL - TYPICAL  
NO SCALE



NOTES:

1. PROVIDE SEPARATE CABLE MANAGEMENT SYSTEM FOR EACH INDIVIDUAL LOW VOLTAGE SYSTEM.
2. PROVIDE ADDITIONAL HOOKS TO ACCOMMODATE NUMBER OF CABLES AT LOCATIONS IN PATHWAY. LEAVE 25% SPACE CAPACITY FOR FUTURE CABLE INSTALLATION.
3. SPACING BETWEEN J-HOOKS SHALL BE 48" ON CENTER.

7 WALL-MOUNTED J-HOOK DETAIL FOR METAL STUD  
NO SCALE



NOTES:

1. PROVIDE SEPARATE CABLE MANAGEMENT SYSTEM FOR EACH INDIVIDUAL LOW VOLTAGE SYSTEMS. (VOICE & DATA)
2. LEAVE 25% SPACE CAPACITY FOR FUTURE CABLE INSTALLATION.
3. SPACING BETWEEN J-HOOKS SHALL BE 48" ON CENTER.

8 J-HOOK DETAIL- TYPICAL  
NO SCALE