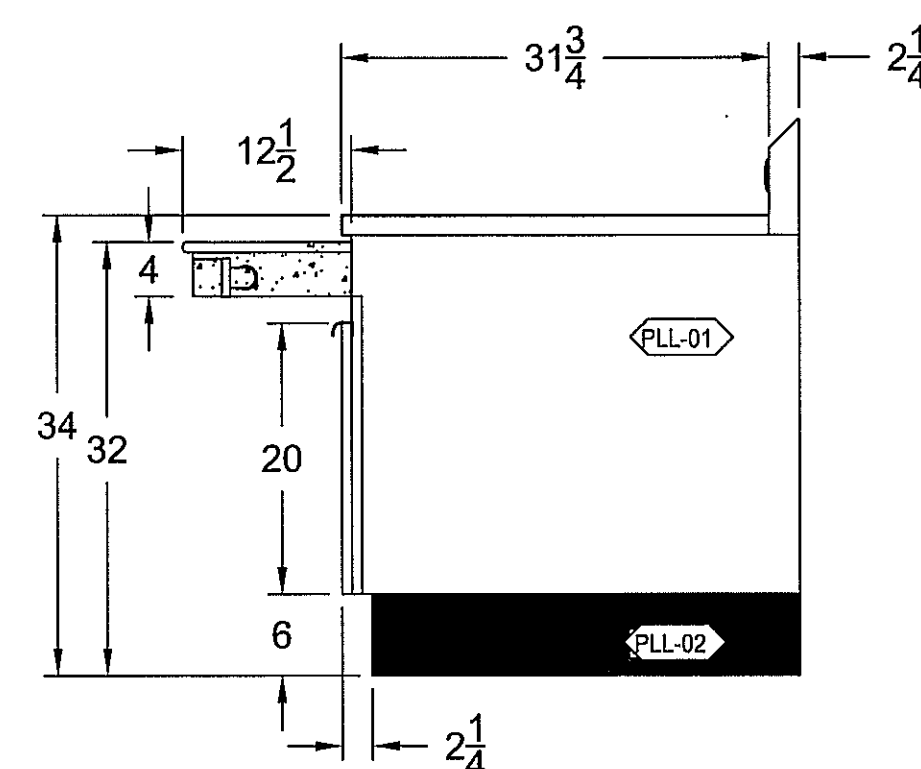




**NOTE: LAMINATE NOT STANDARD COLOR
NO STRIPE**

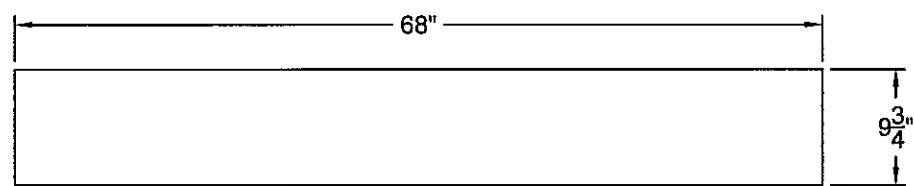
ELEVATION "C"

 <p>AMERICAN FOODSERVICE COMPANY</p> <p>MANUFACTURER OF QUALITY FOODSERVICE EQUIPMENT P.O. BOX 56 SAVANNAH, TN 38372 PHONE 731-925-2200 FAX 731-925-2840</p>	
<p>CORIAN® CERTIFIED</p> <p> A3435</p> <p>QUINTON CURTAIN®</p>	<p>MEMBER</p> <p>NAFEM</p>
<p>VETERAN'S CANTREEN #676</p> <p>TOMAH, WA</p>	
<p>BEVERAGE COUNTER</p>	
<p>PROJECT NAME & LOCATION:</p>	
<p>ITEM DESCRIPTION:</p>	
<p>088222-1</p>	
<p>DATE: 3/29/2012</p>	
<p>SCALE: NTS</p>	
<p>DRAWN BY: TARA PULLUM</p>	
<p>CHECKED:</p>	
<p>SUBMITTED BY: -</p>	
<p>PROJECT/PRODUCT#</p>	
<p>107TWA-BEV1</p>	
<p>SHEET NO. S1</p>	

MATERIALS:

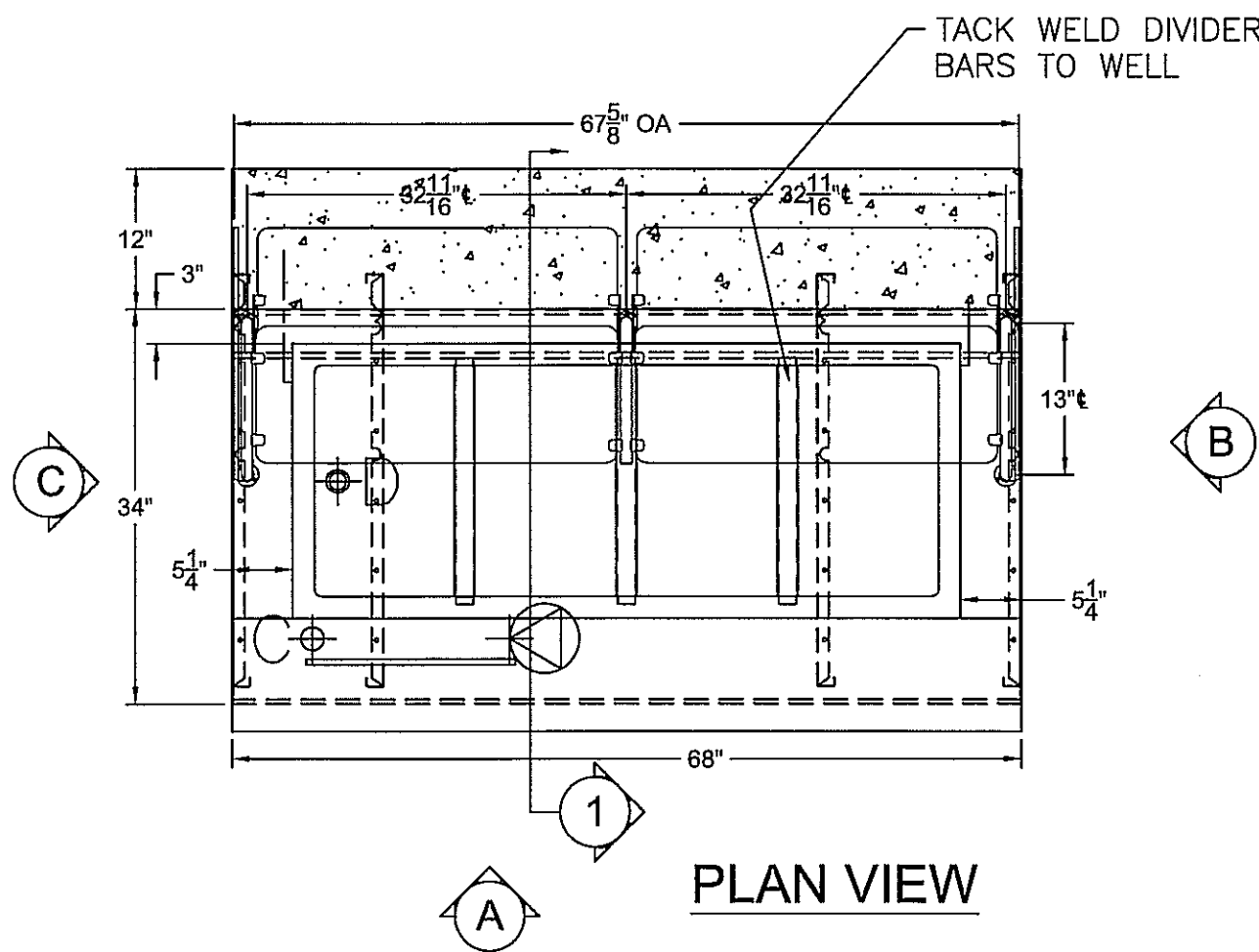
1. COUNTER

COUNTER TOP, REINFORCING CHANNELS: 14 GA. S/S
UNDERSHELF: 16 GA. S/S
BODY, PARTITIONS, KICKPLATE: 18 GA. S/S
TRAY SLIDE SUPPORT: 1" SQ. S/S TUBING
LEGS: 1 5/8" DIA. S/S TUBE
MICA LAMINATED PANEL: 3/4" THICK PLYWOOD

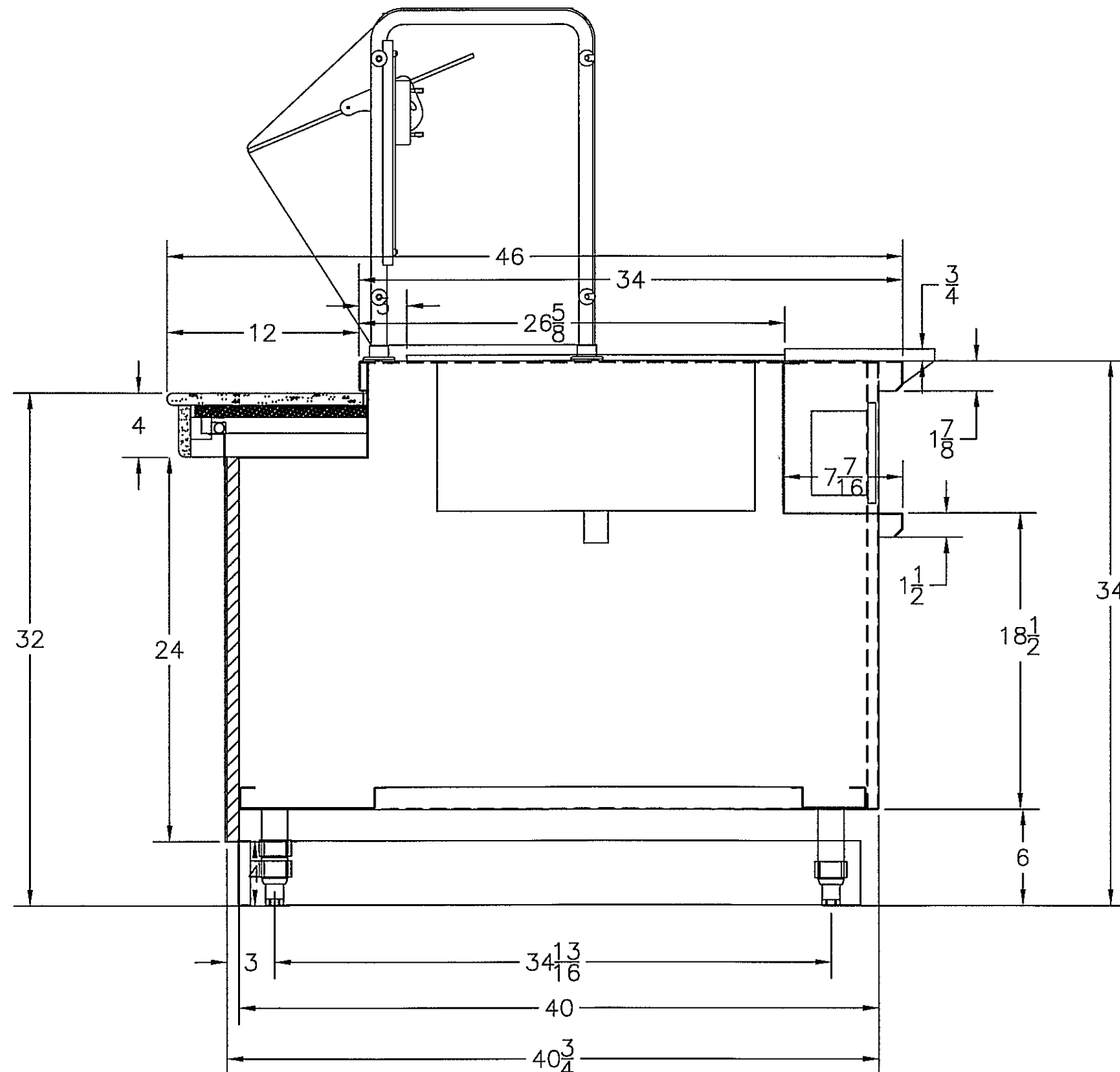


CUTTING BOARD - 3/4" THK BROWN RICHLITE

HT400AF HOT PAN
COUNTER CUTOUT:
56 3/4" X 22 7/8"



PLAN VIEW

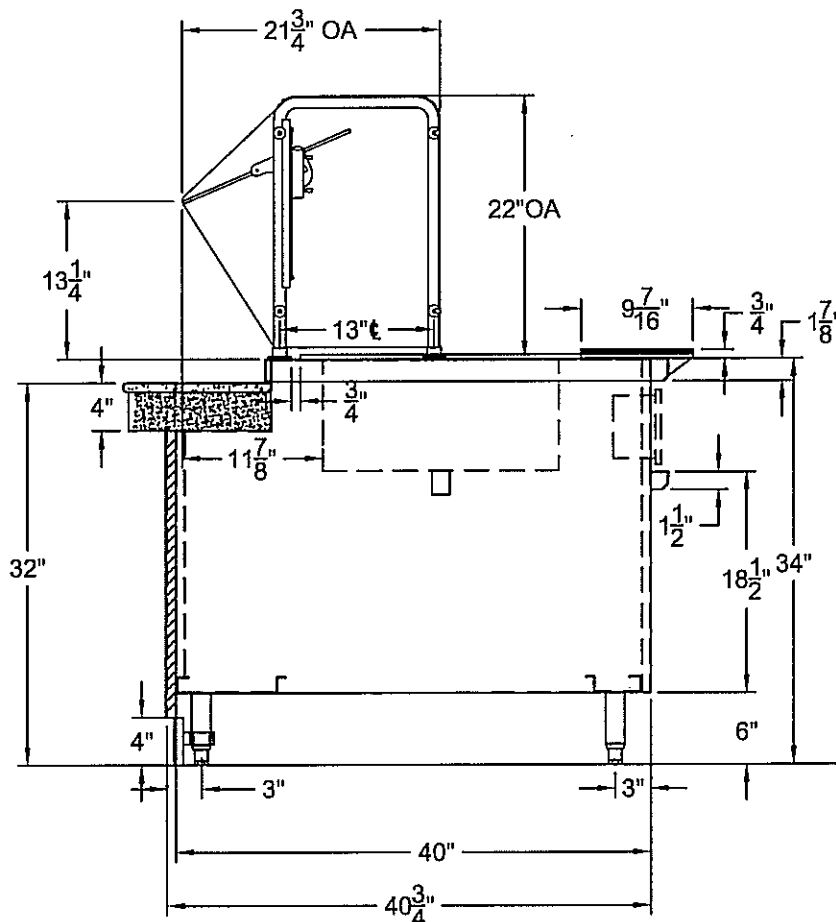


SECTION "1"

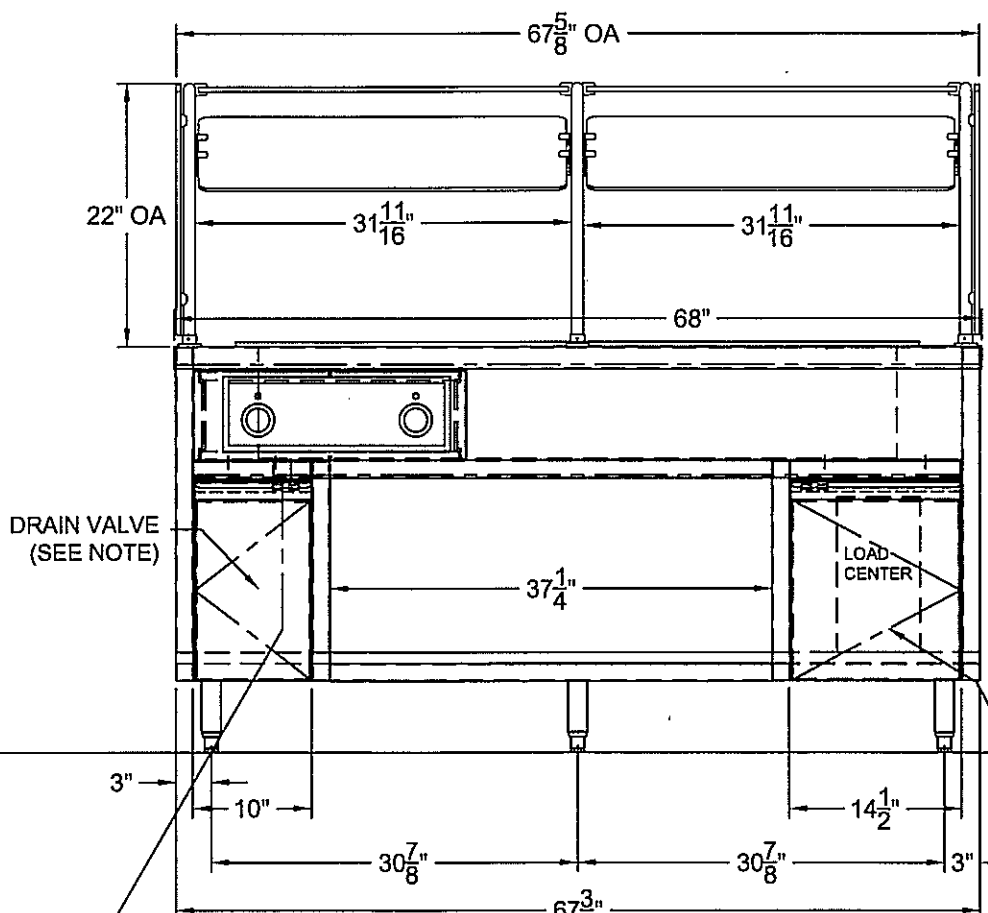
CONSTRUCTION NOTES:

FOODSHIELD TO BE REMOVABLE

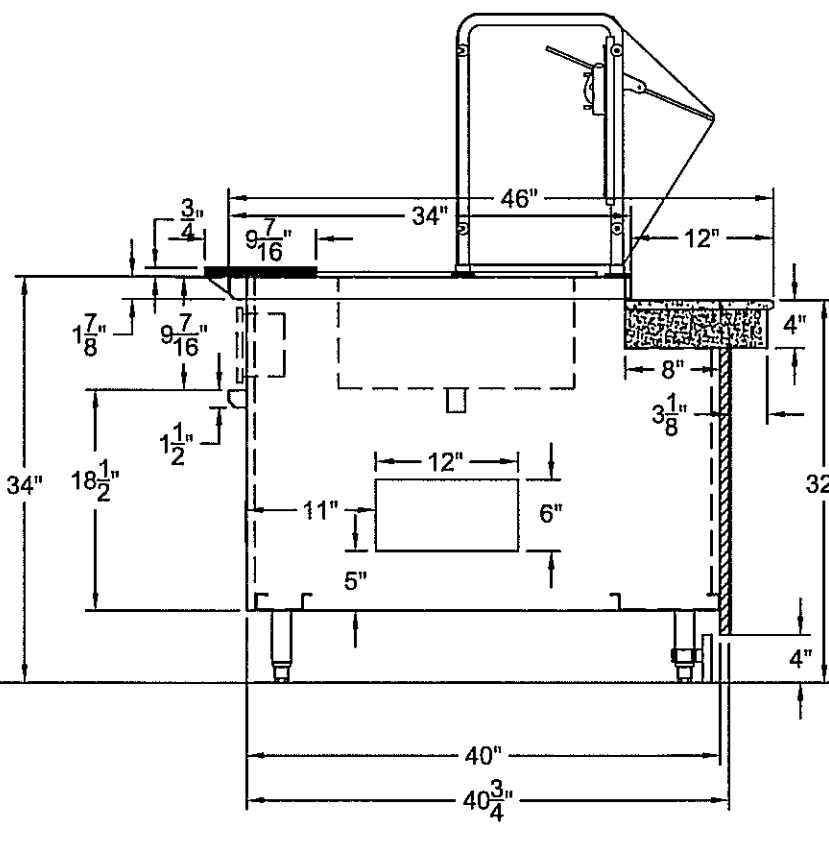
REMOVE TRAY SLIDE AND TOE KICK
BEFORE SHIPPING - INCLUDE ALL
HARDWARE FOR RE-INSTALL TO COUNTER



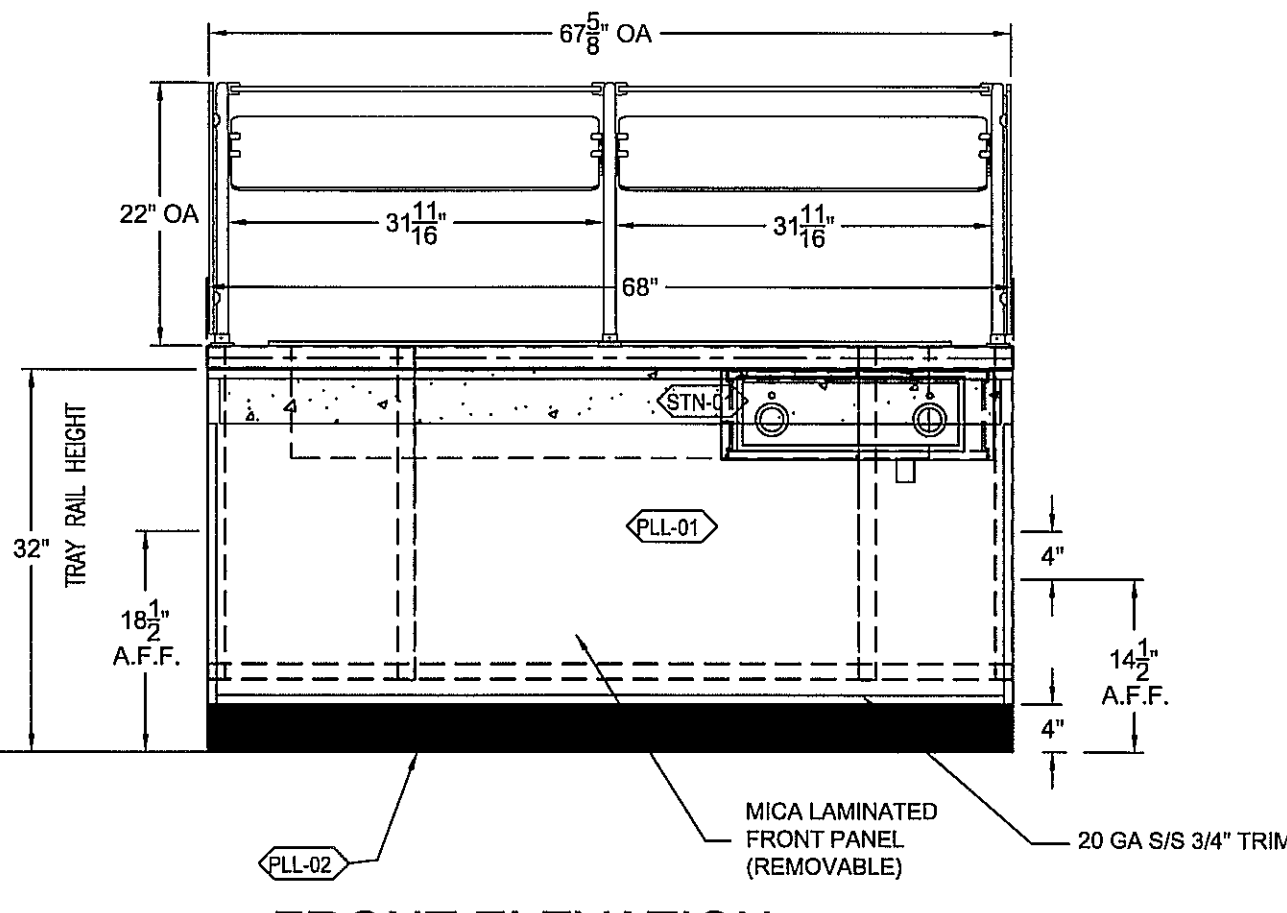
ELEVATION "C"



ELEVATION "A"



ELEVATION "B"



FRONT ELEVATION

NOTE:
SHUT OFF VALVE AND WATER SUPPLY PIPING PROVIDED
AND INSTALLED BY AFC. FINAL CONNECTION TO
BUILDING WATER SYSTEM PROVIDED AND INSTALLED
BY OTHERS.
SHUT-OFF VALVE AND DRAIN PIPING PROVIDED AND
INSTALLED BY AFC. FINAL CONNECTION TO BUILDING
SANITARY SEWER PROVIDED AND INSTALLED BY OTHERS.

Utilities (BOTH UNITS)

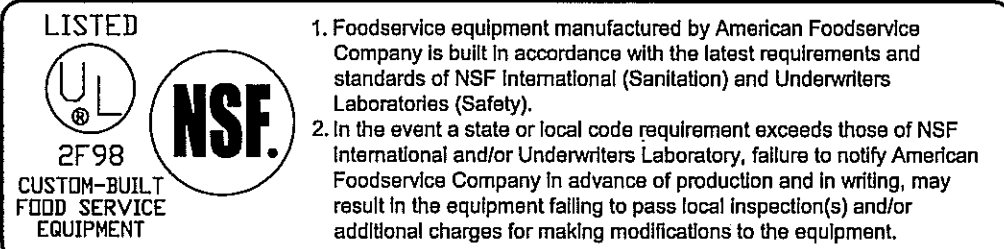
Electrical

(E1) 13.0 Amps, 2.7 KW, 208 Volts, 1 Ph, 60 Hz, Direct Conn., 28" AFF
Remarks - optionally available in 15.0/3.6k/240v/1phase

Plumbing

Indirect Drain
(ID1) 1" Conn., 27" AFF

**NOTE: LAMINATE NOT STANDARD COLOR
NO STRIPE**



GENERAL NOTES

ITEM	DESCRIPTION
1	
2	
3	
4	
5	
6	
7	
8	
9	
10	
11	

COMPONENTS

ITEM	QTY	MANUFACTURER, PART #, AND DESCRIPTION	AFC PART #	SUPPLIED BY:	INSTALLED BY:
01	1	WELLS HT400AF HOT WELL	139732	AFC	AFC
02	1			AFC	AFC
03	6	AFC STANDARD T-5 TRAY RAIL LIGHTS	222436	AFC	AFC
04	6	STANDARD T-5 LAMPS	154501	AFC	AFC
05	1	LOAD CENTER	220120	AFC	AFC
06	4	CHG LEG CLIPS A78-4480	042400	AFC	AFC
07	8	CHG BULLET FOOT	041248	AFC	AFC
08	4	LIFT OFF HINGES CHG M75-5003	760185	AFC	AFC
09	1	HANDY BOX	221540	AFC	AFC
10	1	LIGHT SWITCH	220970	AFC	AFC
11	1	LIGHT SWITCH COVER	221180	AFC	AFC

MATERIAL / FINISH

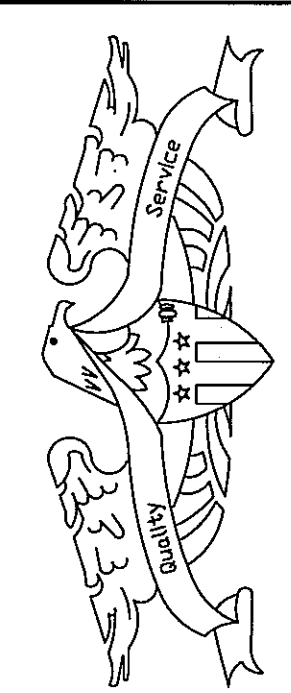
SS = Stainless Steel Laminite	PLY = Plywood	S/S = Stainless Steel	BRK = Brick
PL = Plastic Laminite	WD = Wood	STL = Steel	COR = Corrugated
MCS = Men's Stone	SLA = Stone	ML = Melting	CU = Copper
SIN = Stone	PN = Paint	ALU = Aluminum	CLS = Glass
SIS = Solid Surface	TLE = Tile	SND = Sound Densifier	INS = Insulation
WIR = Wiring			
14 GA 304 S/S			
16 GA 304 S/S			
18 GA 304 S/S			
1 1/2" S/S SQ TUBE			
3/4" PLYWOOD			
CAESARSTONE QUARTZ SURFACE CHOCOLATE TRUFFLE #6350			
PIONITE, SUEDE, OILED CHERRY #WC421			
LAMINATE FOR KICKPLATE - MATT BLACK			
1 5/8" S/S TUBE			
20 GA 304 S/S			

APPROVALS

CUSTOMER APPROVAL
☒ APPROVED BY: [Signature] DATE: 4/9/12
☐ APPROVED AS NOTED DATE: _____
☐ REVISE & RESUBMIT DATE: _____
AFC APPROVAL
☐ APPROVED BY: _____ DATE: _____

REVISIONS

ITEM	DATE	REV. BY:	CHECKED:	DESCRIPTION
1	4/5/2012	TARA PULLUM		REVISED PER EMAIL, CHANGED LENGTH TO 58" AND ADDED THE 4 HOT WELL UNIT
2				
3				
4				

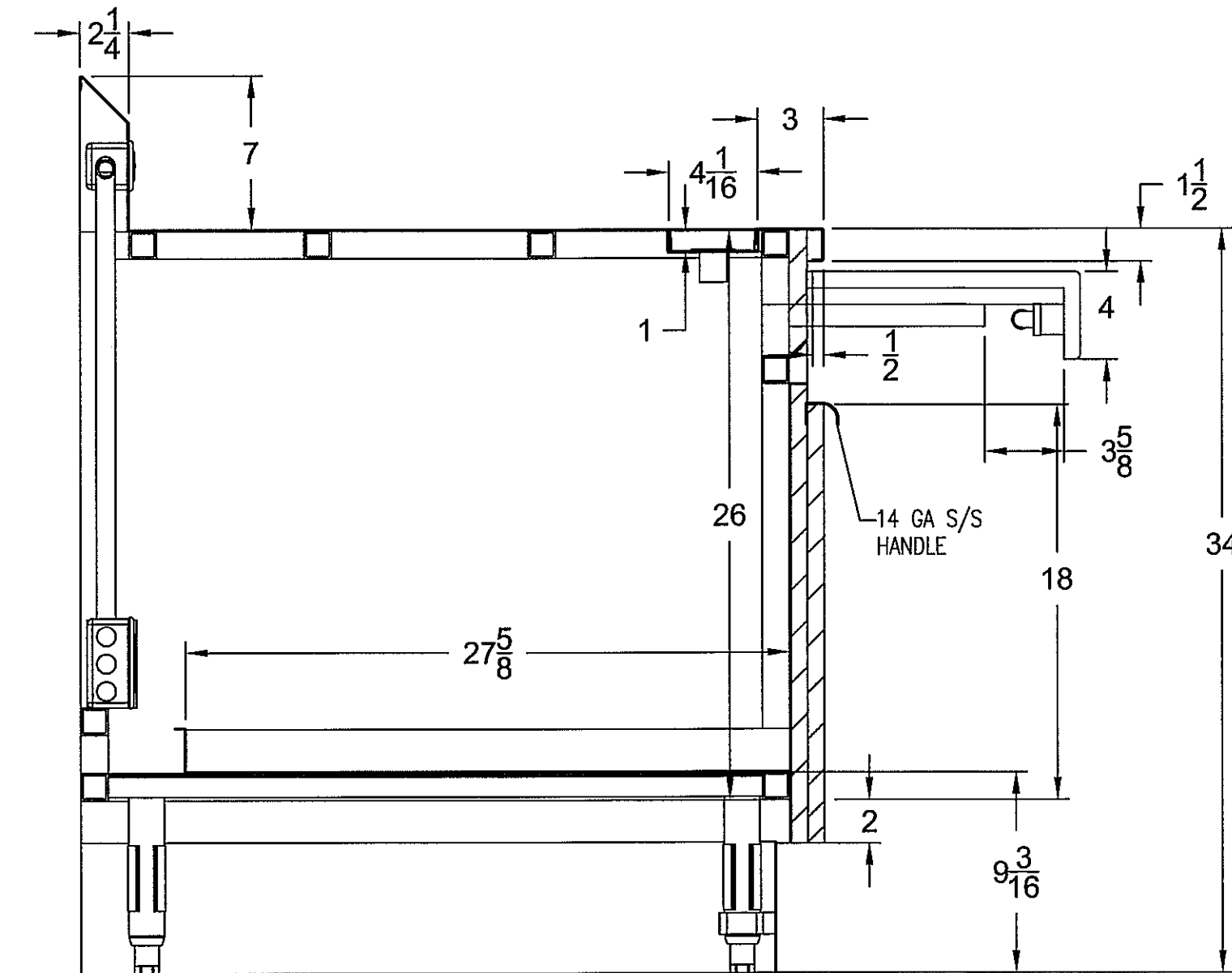
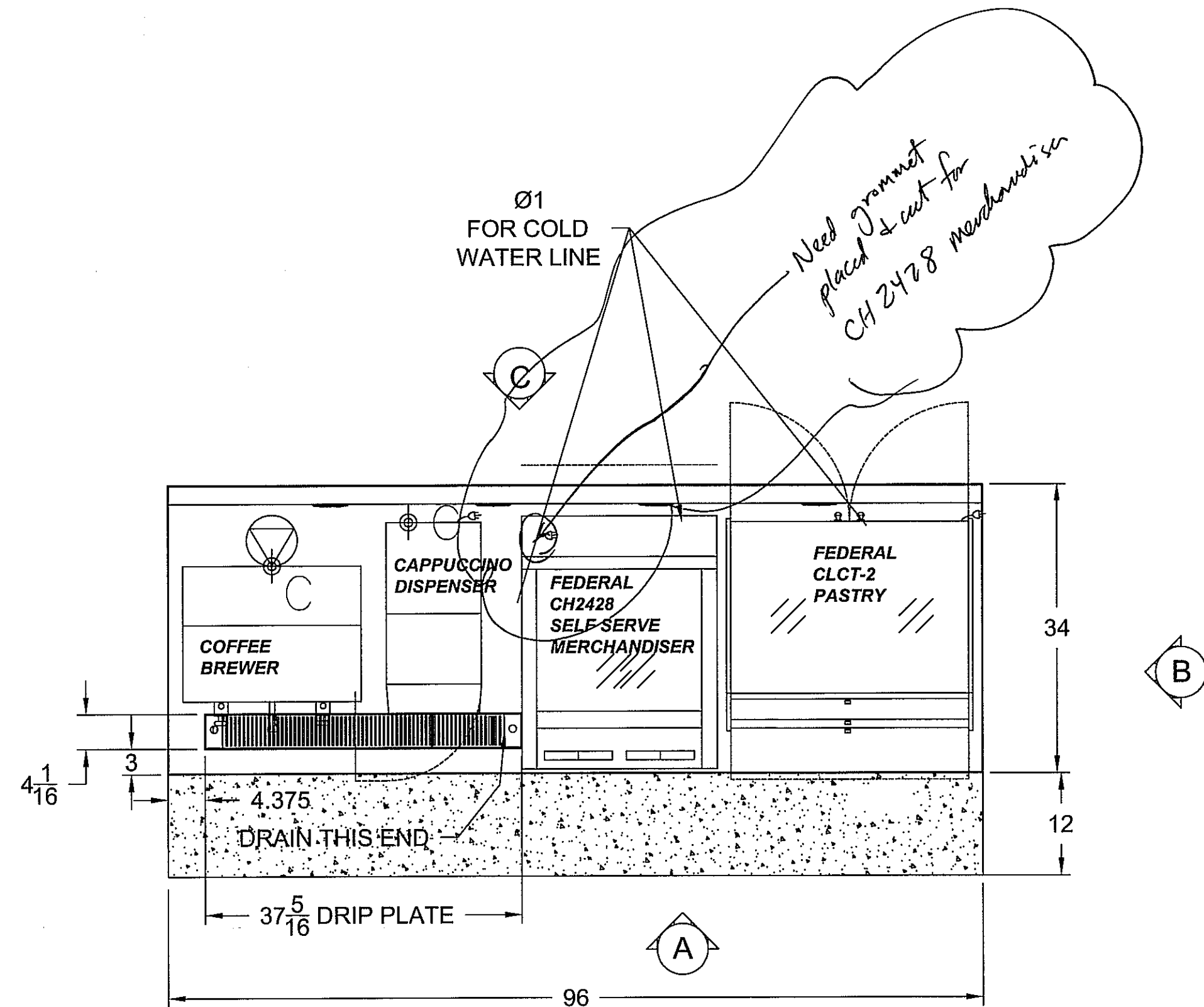


AMERICAN
FOODSERVICE COMPANY
MANUFACTURER OF QUALITY FOODSERVICE EQUIPMENT
P.O. BOX 56 SAVANNAH, TN 38372
PHONE 731-925-2200 FAX 731-925-2840



PROJECT NAME & LOCATION:
VETERAN'S CANTEEN #676
TOMAH, WA
ITEM DESCRIPTION:
COUNTRY COOKING COUNTER

DATE: 4/3/2012
SCALE: NTS
DRAWN BY: TARA PULLUM
CHECKED: _____
SUBMITTED BY: -
PROJECT/PRODUCT#
107TWA-CC1
SHEET NO. S1



SECTION "1"

LISTED

2F98

CUSTOM-BUILT FOOD SERVICE EQUIPMENT

NSF

1. Foodservice equipment manufactured by American Foodservice Company is built in accordance with the latest requirements and standards of NSF International (Sanitation) and Underwriters Laboratories (Safety).

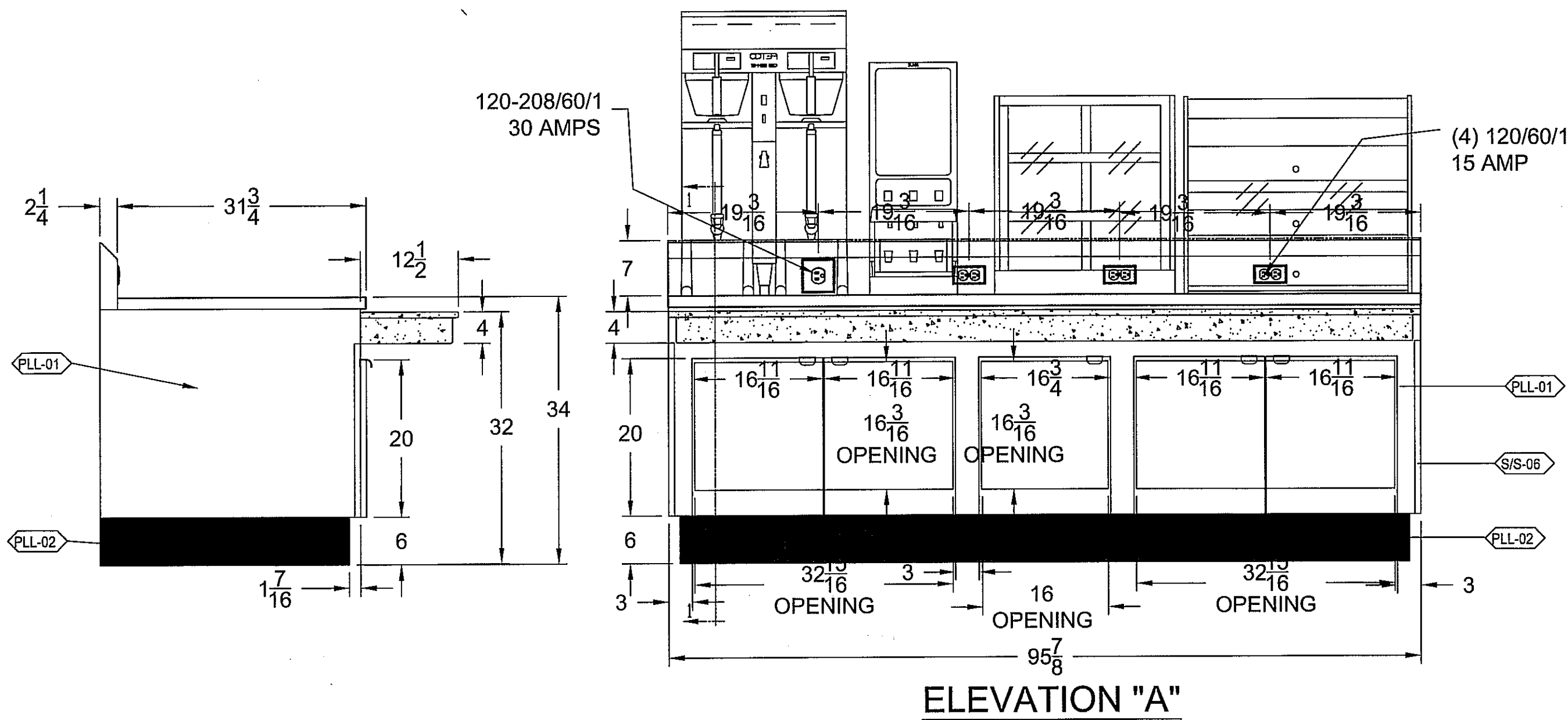
2. In the event a state or local code requirement exceeds those of NSF International and/or Underwriters Laboratory, failure to notify American Foodservice Company in advance of production and in writing, may result in the equipment failing to pass local inspection(s) and/or additional charges for making modifications to the equipment.

GENERAL NOTES	
ITEM	DESCRIPTION

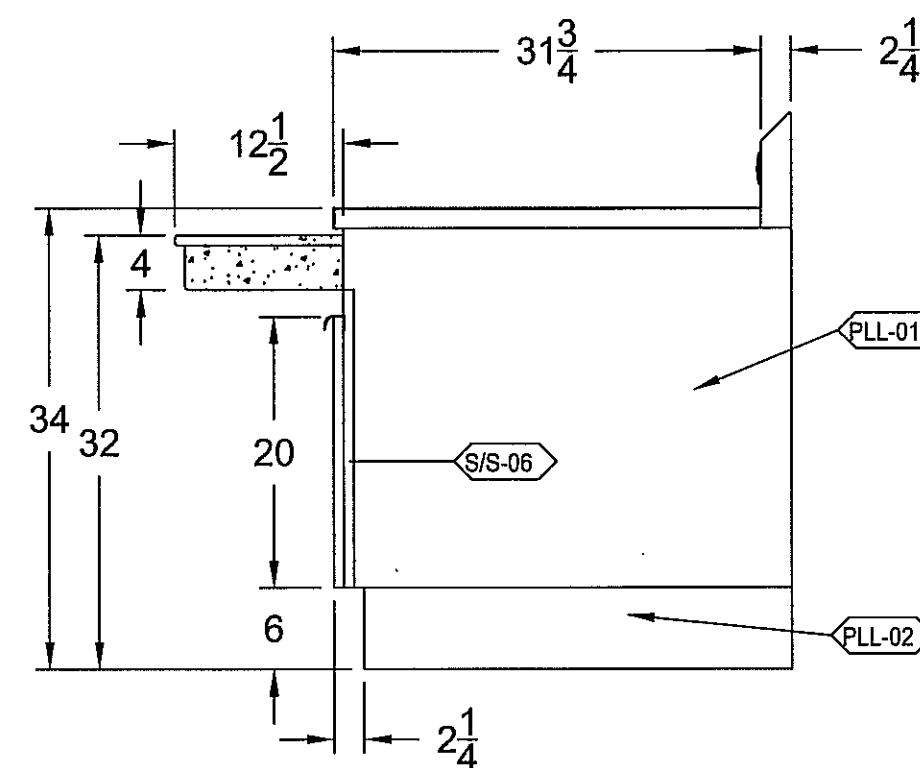
COMPONENTS					
ITEM	QTY	MANUFACTURER, PART #, AND DESCRIPTION	AFC PART #	SUPPLIED BY:	INSTALLED BY:
01	5	VILLAGE SQUARE P353-26 3" WIRE PULL	043190	AFC	AFC
02	15	BLUM 7116680 170° HINGE	760004	AFC	AFC
03	15	BLUM 175H7100 HINGE PLATE	477073	AFC	AFC
04	8	KICKPLATE LEG CLIP CHG #A76-4460	042400	AFC	AFC
05	8	BULLET FOOT - CHG #A10-0851-C	041248	AFC	AFC
06	4	HANDY BOX	221540	AFC	AFC
07	4	GFCI COVER	221230	AFC	AFC
08	4	120 VOLT OUTLET	221090	AFC	AFC
09	3	4 X 4 HANDY BOX	221590	AFC	AFC
10	3	4 X 4 COVER	221600	AFC	AFC
11	8	J16-1000-SQ BLK END CAP	271240	AFC	AFC
12	3	AFC STANDARD T-5 TRAY RAIL LIGHTS	222436	AFC	AFC

MATERIAL / FINISH			
SS = Stainless Steel Laminate	PLY = Plywood	S/S = Stainless Steel	BRK = Brick
PL = Plastic Laminate	WOD = Wood	SL = Steel	CVB = Cove Base
MMS = Man Made Stone	SIA = Stain	GLV = Galvanized Metal	MID = Molding
STN = Stone	PNT = Paint	ALU = Aluminum	GLS = Glass
SLS = Solid Surface	TLE = Tile	SND = Sound Deadener	INS = Insulation
CIB = Cutting Board			
S/S-01	14 GA 304 S/S		
S/S-02	16 GA 304 S/S		
S/S-03	18 GA 304 S/S		
S/S-04	1 1/4" S/S SQ TUBE		
PLY-01	3/4" PLYWOOD		
STN-01	CAESARSTONE QUARTZ SURFACE CHOCOLATE TRUFFLE #6350		
PLL-01	PIONITE, SUEDE, OILED CHERRY #WC421		
PLL-02	KICKPLATE - BLACK CODEMO		
PLL-03			
PLL-04			
S/S-05	1 5/8" S/S TUBE		
S/S-06	20 GA 304 STAINLESS STEEL		

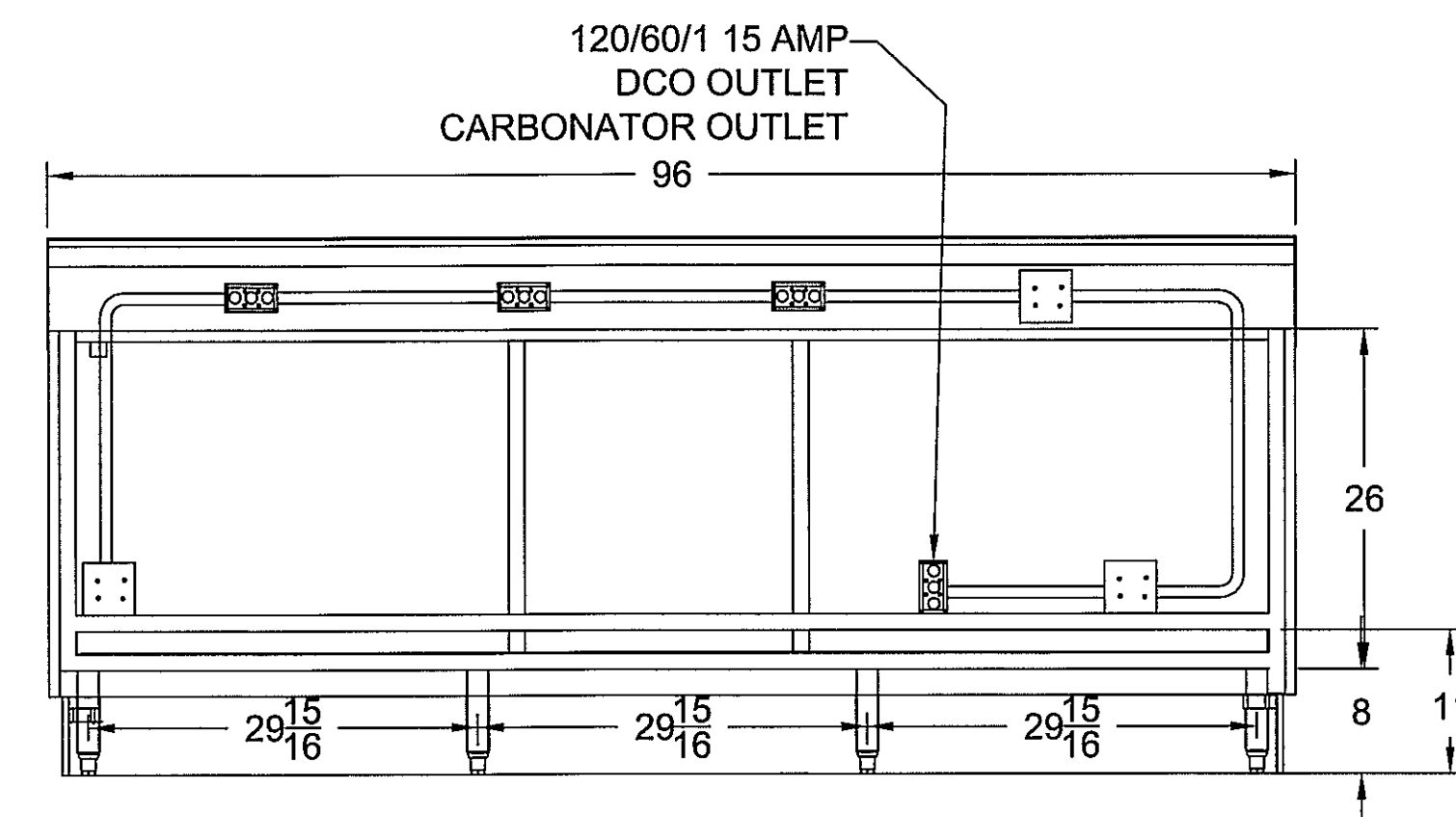
NOTE: LAMINATE NOT STANDARD COLOR
NO STRIPE



ELEVATION "A"



ELEVATION "B"



ELEVATION "C"

APPROVALS

CUSTOMER APPROVAL

☐ APPROVED BY _____ DATE: _____

☒ APPROVED AS NOTED *[Signature]* DATE: 4/7/12

☐ REVISE & RESUBMIT _____ DATE: _____

AFC APPROVAL

☐ APPROVED BY _____ DATE: _____

REVISIONS				
ITEM	DATE	REV. BY:	CHECKED:	DESCRIPTION
1	-	-	-	-
2	-	-	-	-
3	-	-	-	-
4	-	-	-	-

AMERICAN FOODSERVICE COMPANY

MANUFACTURER OF QUALITY FOODSERVICE EQUIPMENT

P.O. BOX 56 SAVANNAH, TN 38372

PHONE 731-925-2200 FAX 731-925-2840

MEMBER NAFEM

VETERAN'S CANTEN #676

TOMAH, WA

ITEM DESCRIPTION: BEVERAGE COUNTER, B2

DATE: 3/30/2012

SCALE: NTS

DRAWN BY: TARA PULLUM

CHECKED: _____

SUBMITTED BY: -

PROJECT/PRODUCT# 107TWA-BEV2

SHEET NO. S1