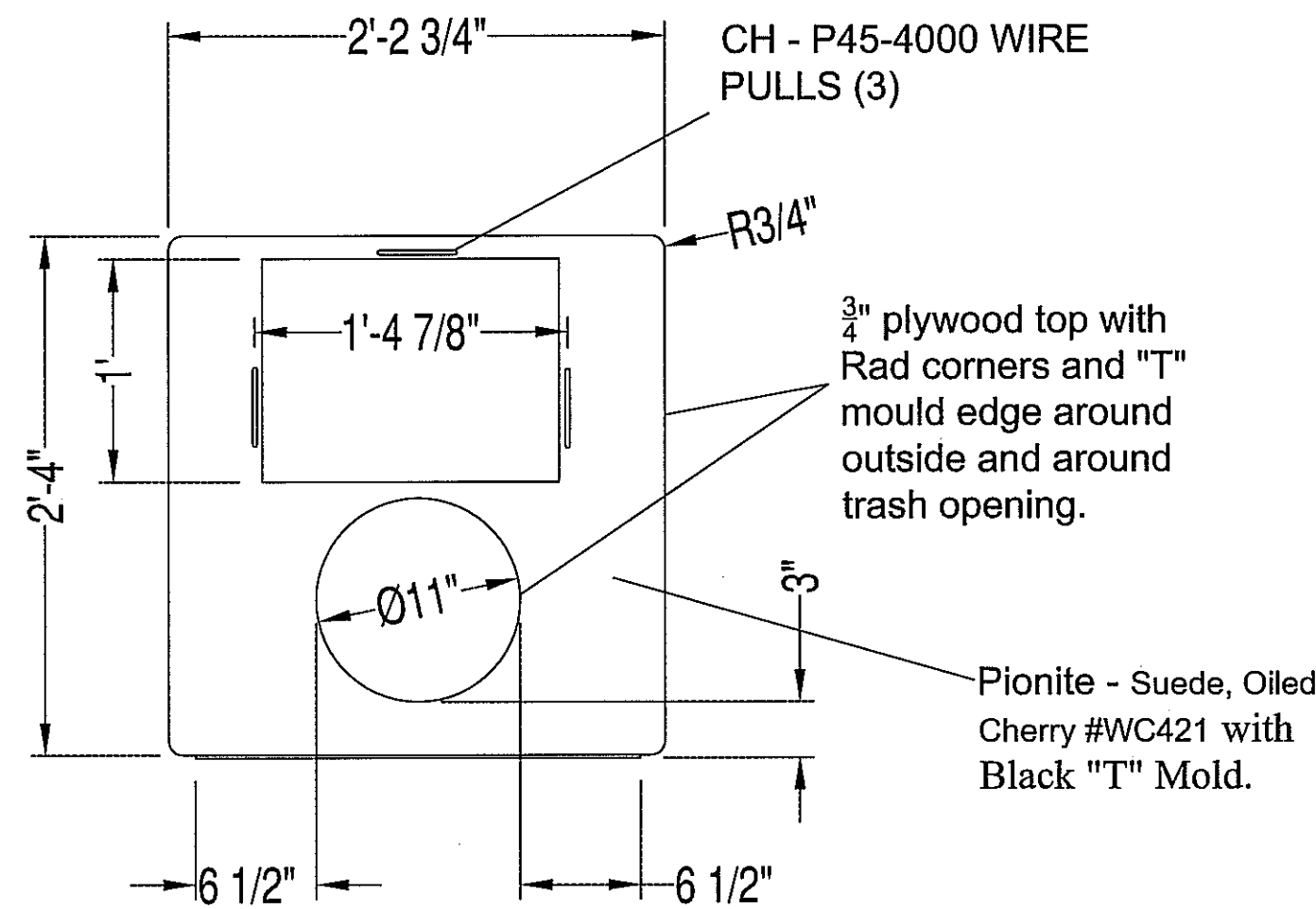
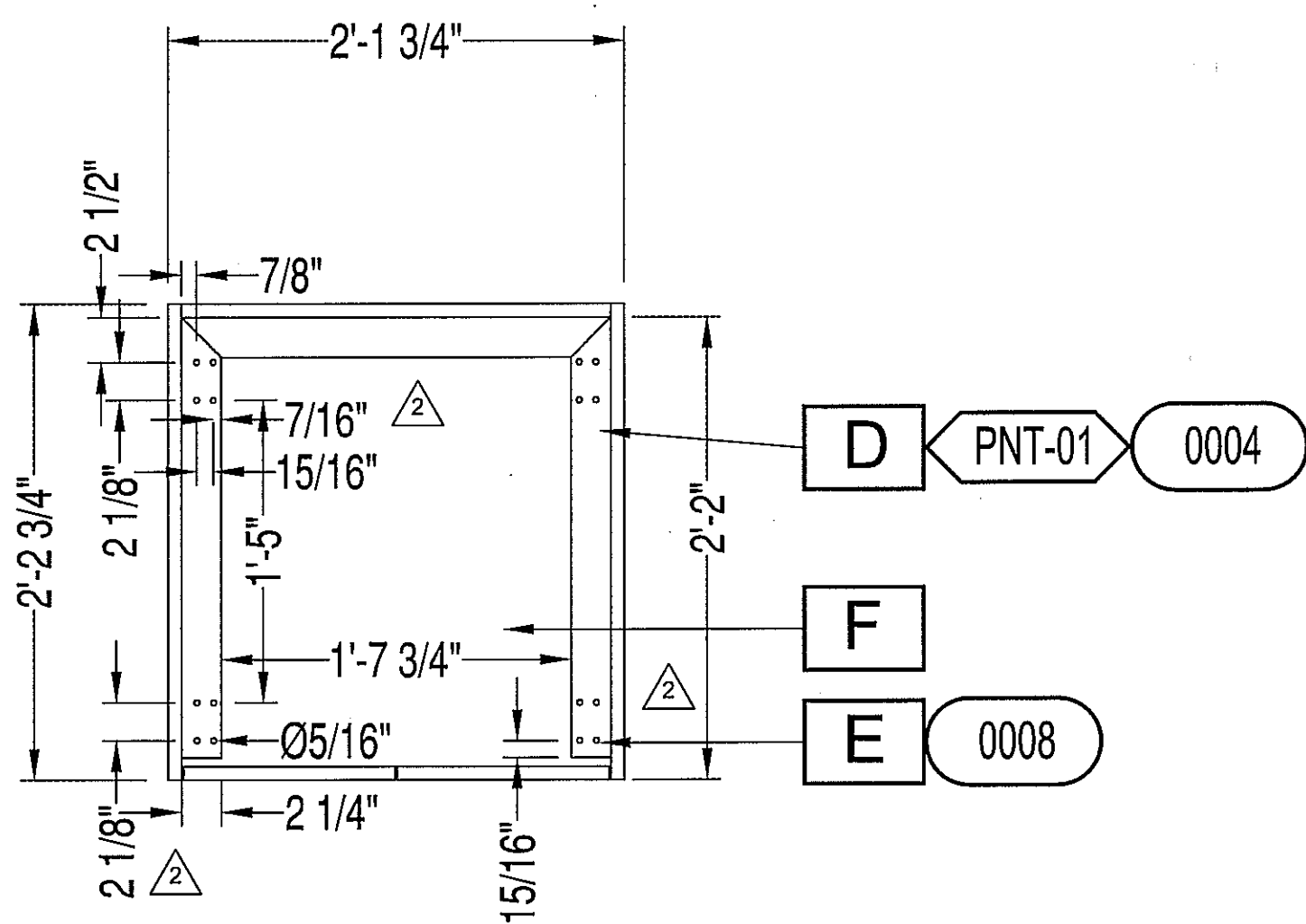
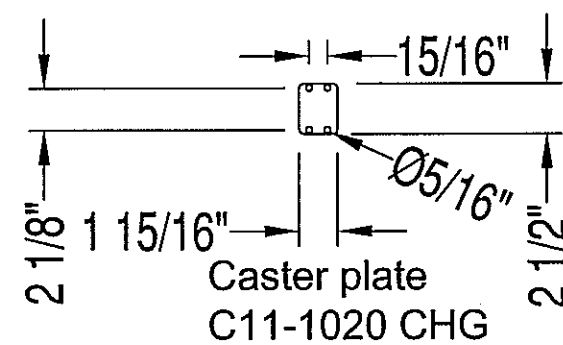


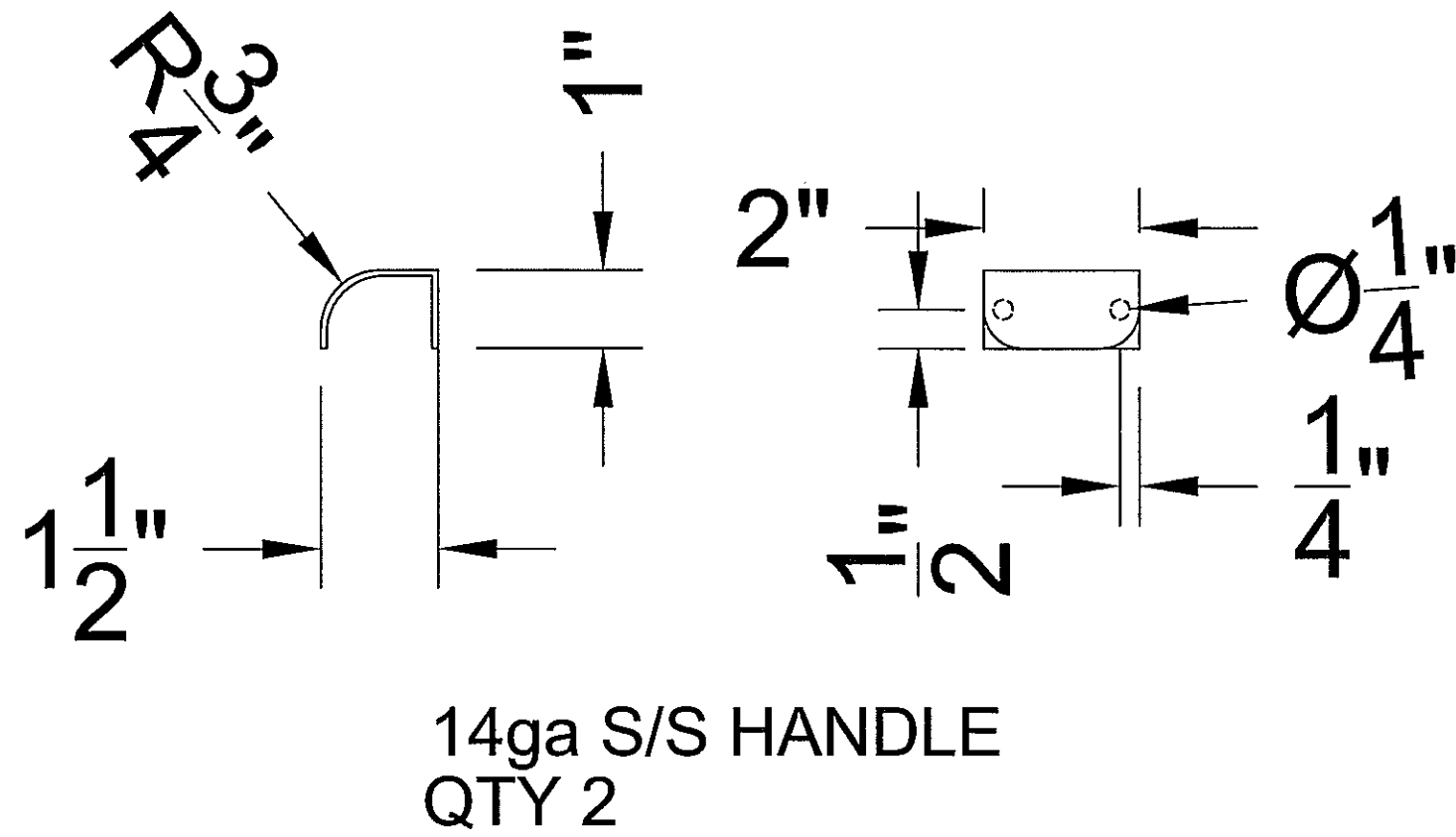
TRASH RECEPTACLE



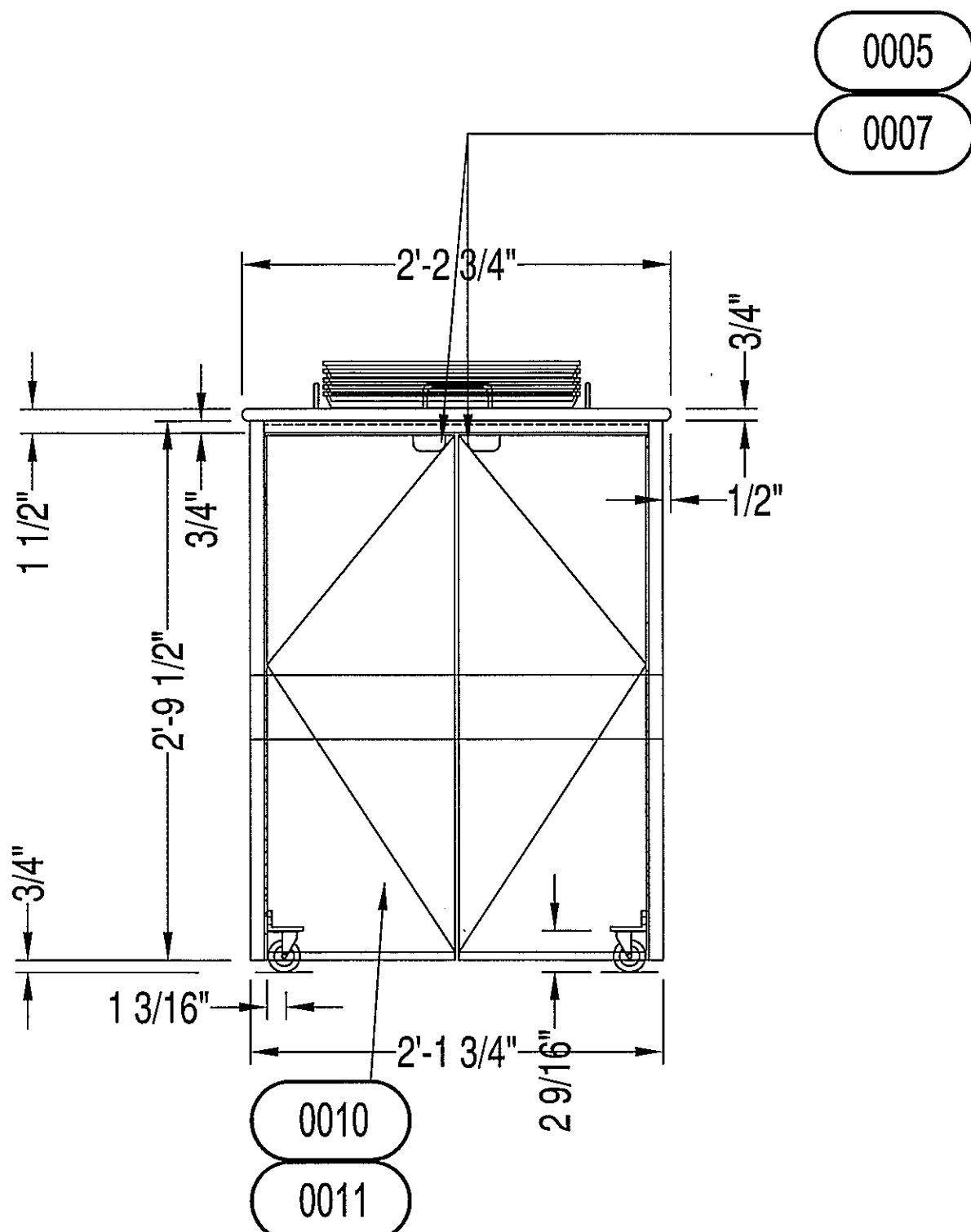
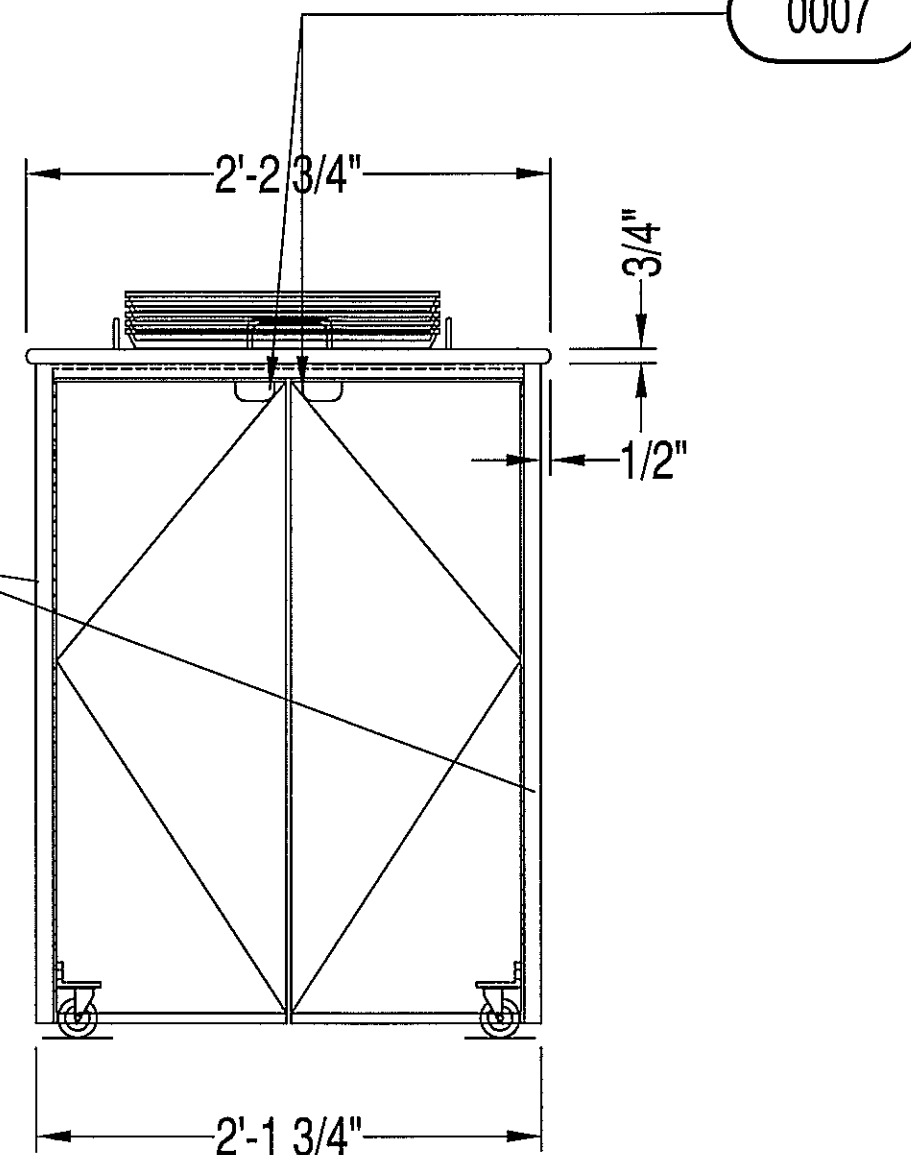
PLAN VIEW - TRASH RECEPTACLE "A"



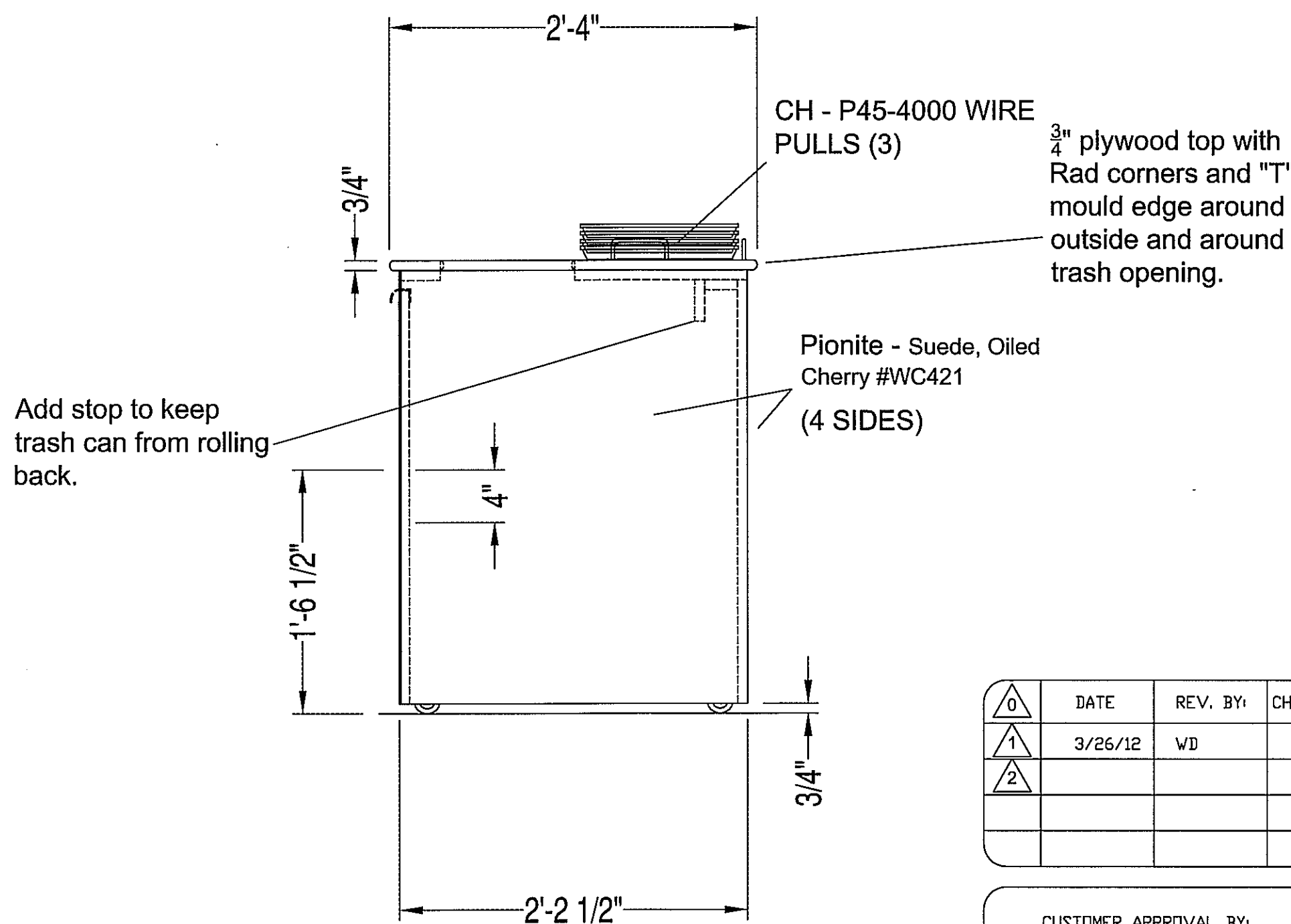
PLAN VIEW - INTERIOR



Pionite - Suede, Oiled
Cherry #WC421 with
Black "T" Mold both
front edges.



ELEVATION "A"



ELEVATION "B"

LISTED
UL
2F98
CUSTOM-BUILT
FOOD SERVICE
EQUIPMENT

NSF

1. Foodservice equipment manufactured by American Foodservice Company is built in accordance with the latest requirements and standards of NSF International (sanitation) and Underwriters Laboratories (safety).
2. In the event a state or local code requirement exceeds those of NSF International and/or Underwriters Laboratory, failure to notify American Foodservice Company in advance of production and in writing, may result in the equipment failing to pass local inspection (s) and/or additional charges for making modifications to the equipment.

A GENERAL NOTES:

A	BASE, SHELF AND DOORS CONSTRUCTED OF 3/4" PLYWOOD
B	
C	1 1/2" DIAMETER CUTOUT (INSIDE OF CUTOUT TO BE PAINTED BLACK)
D	ANGLE IRON FRAME AT BOTTOM
E	BALL CASTERS AT BOTTOM OF ANGLE IRON FRAME
F	NO FLOOR - OPEN FOR ROLL-IN TRASH CAN UNIT
G	T-MOLD EDGING (Black)
H	CABINET BASE AND DOORS TO BE SEALED INSIDE WITH WHITE LAMINATE

00000 FINISH SCHEDULE:

SSL = Stainless Steel Laminite	NRS = Natural Stone	SLS = Solid Surface	TLE = Tile	STA = Stain
MMS = Man Made Stone	S/S = Stainless Steel	CVB = Cove Base	STN = Stone	BRK = Brick
PLL = Plastic Laminite	SHM = Sheet Metal	PNT = Point	MLD = MOLDING	

PLL-01				
PLL-02	Pionite - Suede, Oiled Cherry #WC421			
PNT-01	"BLACK"			

0000 COMPONENTS: PER EACH

ITEM #	QTY	DESCRIPTION	MANUFACTURER AND PART#	SUPPLIED BY	INSTALLED BY
0001	4 x 10'	3/4" BIRCH PLYWOOD / MDR	AFC #001010 WEYERHAEUSER	AFC	AFC
0002	5' x 12'	LAMINATE	Wilsonart #4425-00 Graphite Nebula	AFC	AFC
0003	-	-	-	AFC	AFC
0004	6'-6"	ANGLE IRON 1 1/2" x 1 1/2" x 1/4"	AFC #015400 RYERSONTULL	AFC	AFC
0005	2	DOOR PULL - sis	AFC	AFC	AFC
0006	6' STICK	PIANO HINGE - NICKEL (CUT TO FIT DOORS)	AFC #061020 STOCKER #7200-CB	AFC	AFC
0007	2	LATCH - Roller	P171-3	AFC	AFC
0008	4	2" Plate top casters	AFC # 043358 CHS # C11-1020	AFC	AFC
0009	16'-0"	"T" MOLD EDGING	AFC #031200 OUTWATER PLASTIC #105-650-260	AFC	AFC
0010	1	TRASH CAN	AFC #020200 RUBBERMAID #2632	AFC	AFC
0011	1	DOLLY	AFC #020200 RUBBERMAID #2640	AFC	AFC
0012	5' x 12'	LAMINATE	Wilsonart Ecobuilt Peel # 10745-60	AFC	AFC

Pionite

QTY 5

DATE	REV. BY	CHECKED BY	DESCRIPTION
3/26/12	WD		revised to Laminite top

CUSTOMER APPROVAL BY: _____ DATE: 4/10/12

APPROVED: _____

APPROVED AS NOTED: *JMR*

REVISE AND RESUBMIT: _____

FACTORY APPROVED BY: _____ DATE: _____

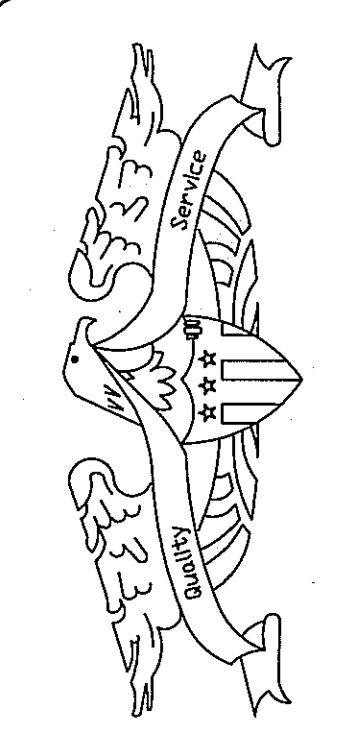
SALES APPROVED BY: _____ DATE: _____

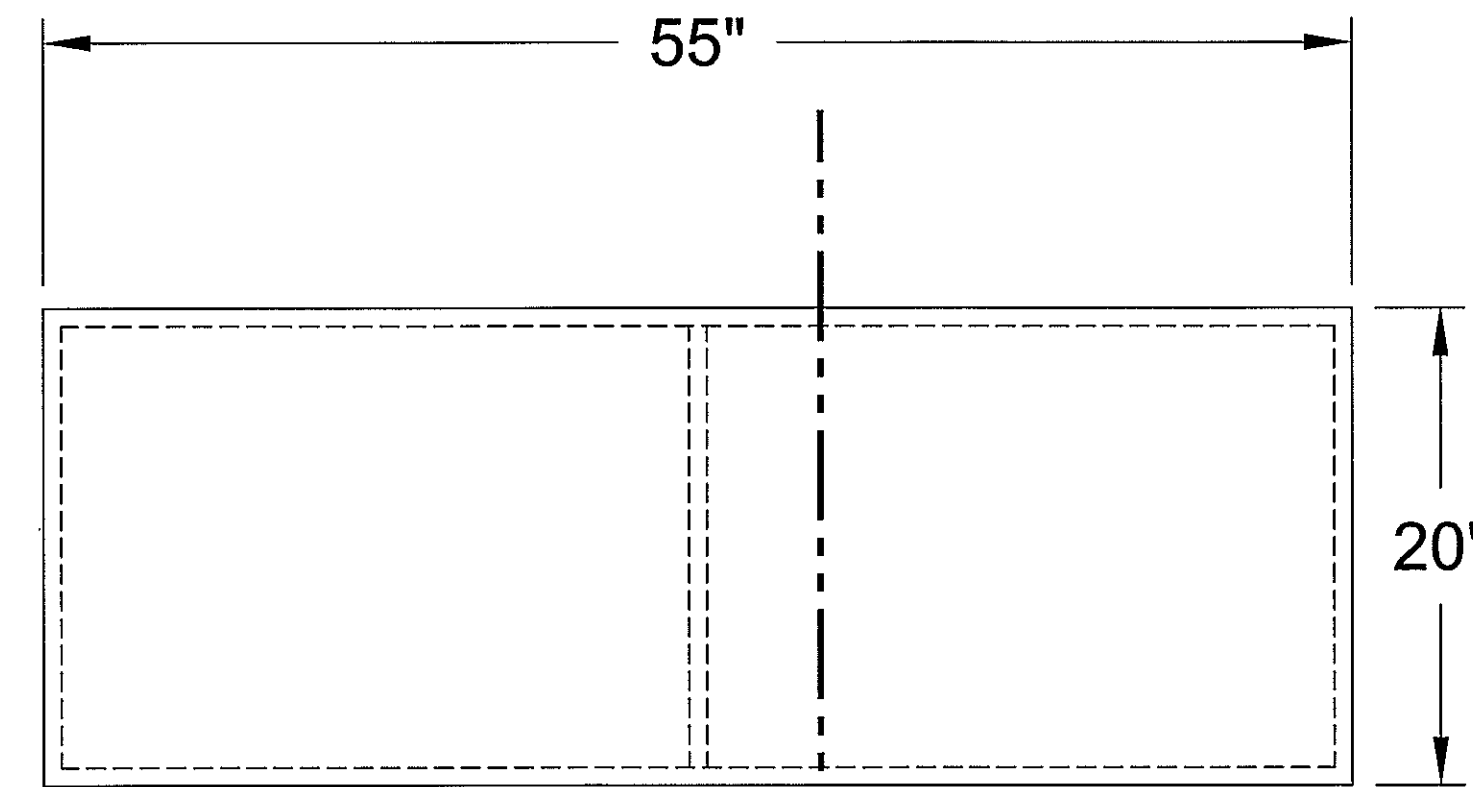
PROJECT:
Veteran's Canteen # 676
TOMAH, WI.

DATE: 3/26/12
SCALE: 3/4" = 1'-0"
DRAWN BY: WD
CHECKED BY: -
SUBMITTED BY: WD
PROJECT #
107 - -1
SHEET NO. -

AMERICAN
FOODSERVICE COMPANY
MANUFACTURER OF QUALITY FOODSERVICE EQUIPMENT
P.O. BOX 56 SAVANNAH, TN 38372
PHONE 731-925-2200 FAX 731-925-2840

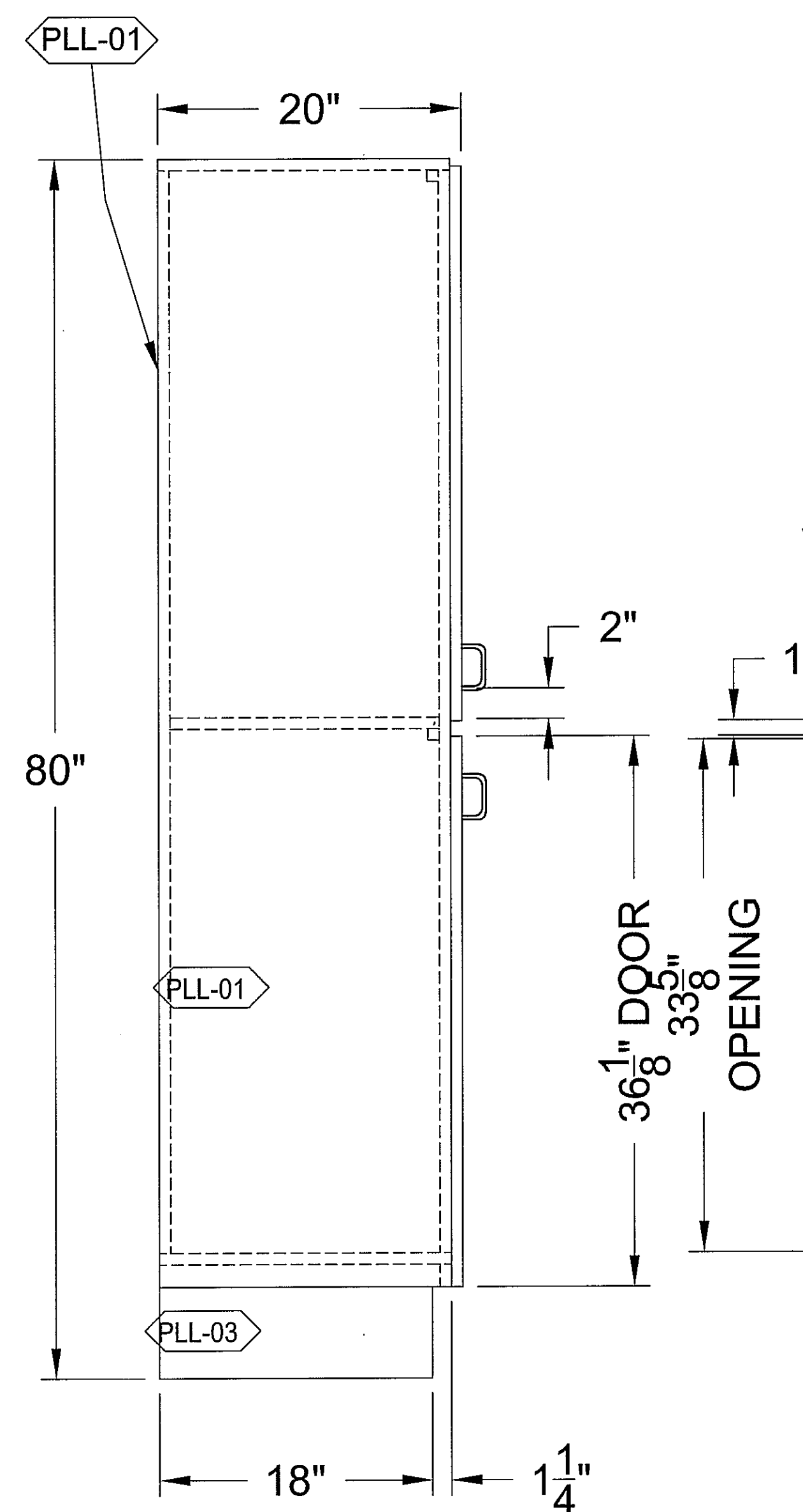
CORIAN CERTIFIED
A3435
CURTAIN®
MEMBER
NAFEM



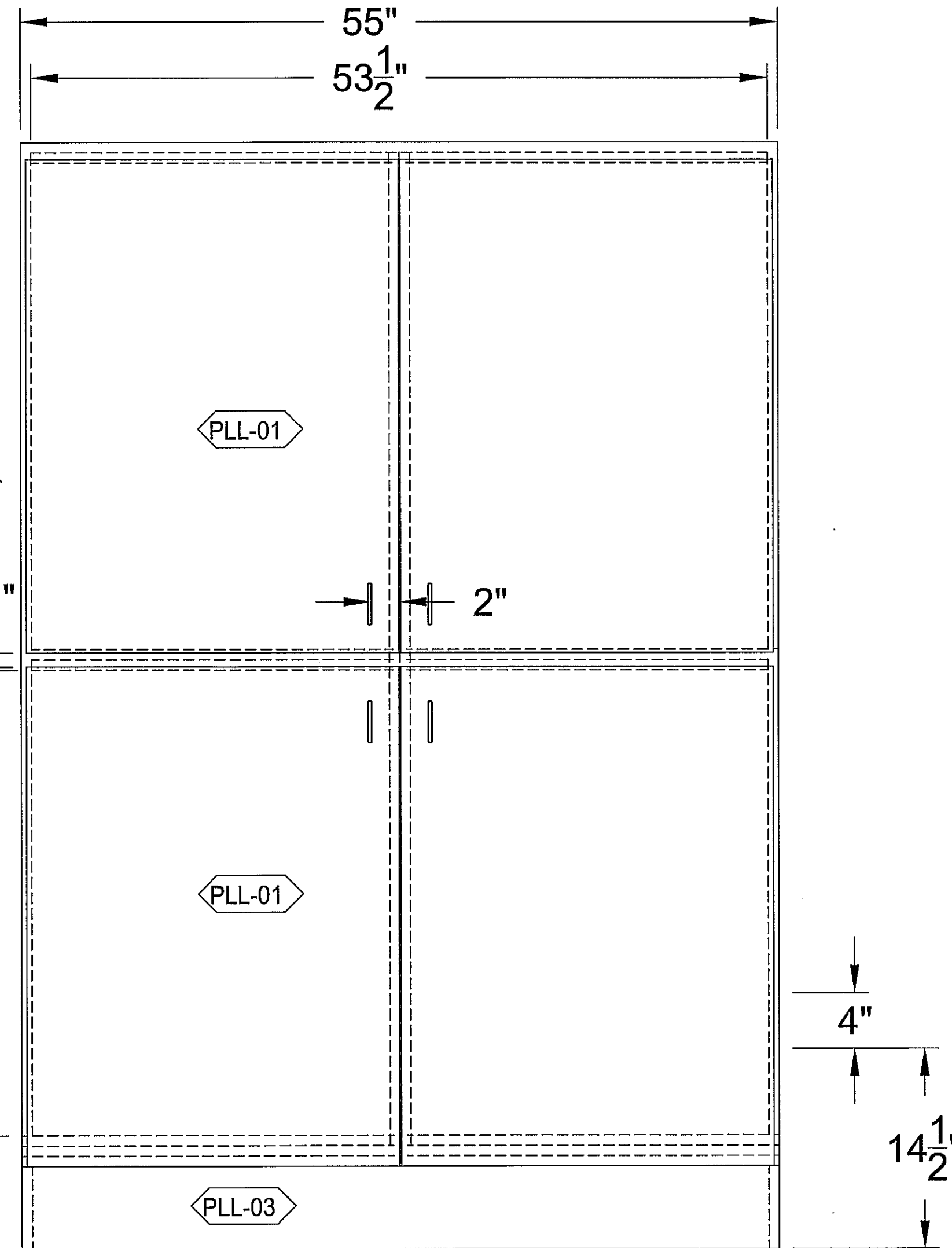


PLAN VIEW

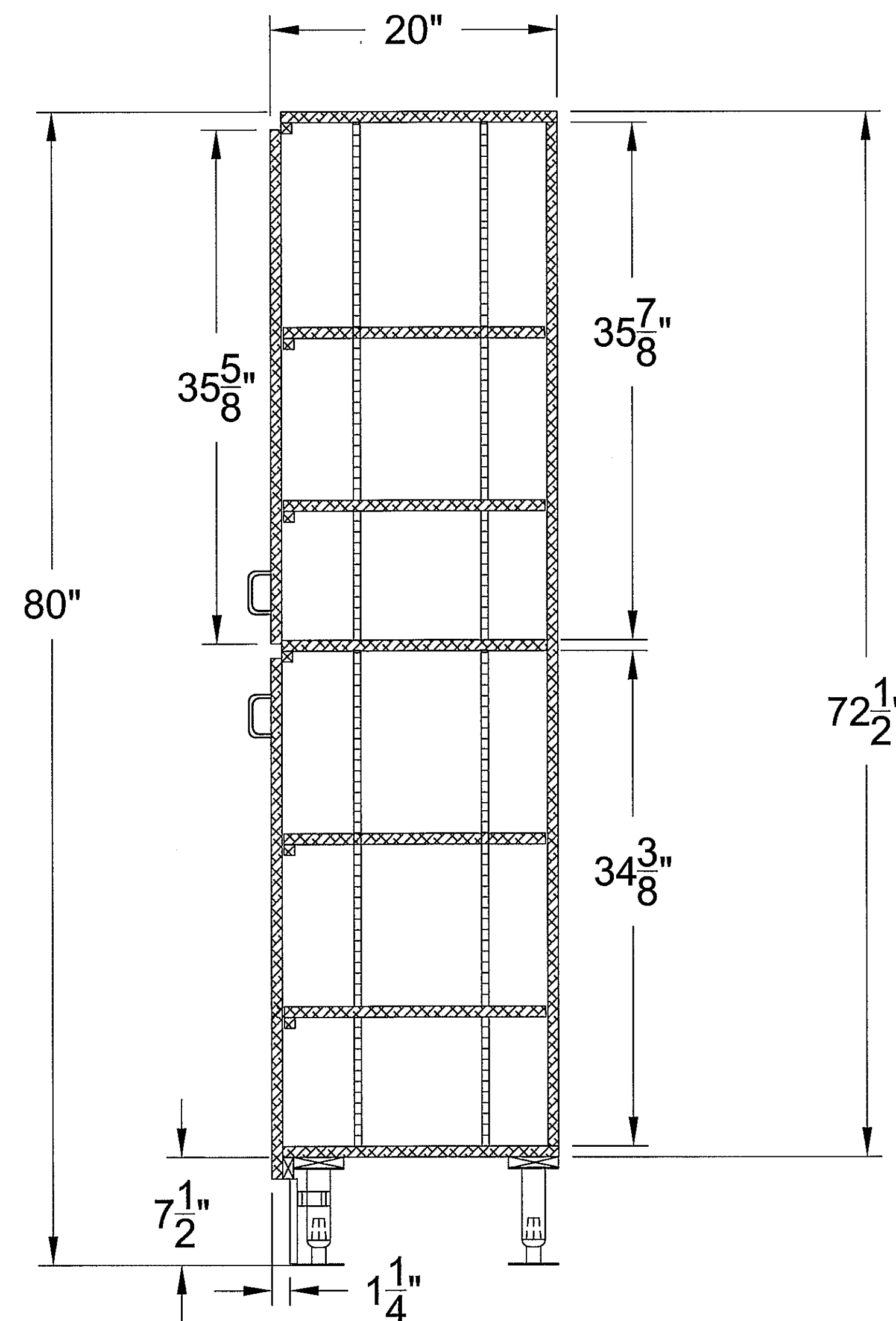
NOTE: SPECIAL COLORS
NO STRIPE



SIDE ELEVATION



FRONT ELEVATION



SECTION VIEW A

LISTED
2F 98
CUSTOM-BUILT
FOOD SERVICE
EQUIPMENT

1. Foodservice equipment manufactured by American Foodservice Company is built in accordance with the latest requirements and standards of NSF International (sanitation) and Underwriters Laboratories (safety).
2. In the event a state or local code requirement exceeds those of NSF International and/or Underwriters Laboratory, failure to notify American Foodservice Company in advance of production and in writing may result in the equipment failing to pass local inspection (s) and/or additional charges for making modifications to the equipment.

GENERAL NOTES:	
A	TO BE CONSTRUCTED OF 3/4" PLYWOOD COVERED WITH STANDARD GRADE LAMINATE
B	BOTTOM OF SHELVES TO BE MELAMINE
C	UNIT TO SIT ON LAMINATED PLYWOOD BASE
D	

COMPONENTS				
ITEM	QTY	MANUFACTURER, PART #, AND DESCRIPTION	SUPPLIED BY:	INSTALLED BY:
01	4	VILLAGE SQUARE P353-26 3" WIRE PULL (043150)	AFC	AFC
02	12	BLUM 71T6680 170° HINGE (760004)	AFC	AFC
03	12	BLUM 175H7100 HINGE PLATE (760011)	AFC	AFC
04	6	KICKPLATE LEG CLIP CHG #A76-4460	AFC	AFC
05	4	LEG ASSEMBLY- CHG #A47-9932-C	AFC	AFC
06	16	PILASTER CHG T23-1024	AFC	AFC
07	32	SHELF SUPPORT CHG T30-5130	AFC	AFC

MATERIAL / FINISH	
SSI = Stainless Steel Laminat	PLY = Plywood
PLI = Plastic Laminat	WOD = Wood
MMS = Man Made Stone	STA = Stain
SIN = Stone	PNT = Paint
SSS = Solid Surface	TLE = Tile
CIB = Cutting Board	S/S = Stainless Steel
	STL = Steel
	GLV = Galvanized Metal
	ALU = Aluminum
	SND = Sound Deadener
	BRK = Brick
	CVB = Cove Base
	MID = Molding
	GLS = Glass
	INS = Insulation
PLY-01	3/4" PLYWOOD
PLL-01	PIONITE - SUEDE OILED CHERRY #WC421
PLL-02	
PLL-03	LAMINATE FOR KICKPLATE - MATT BLACK

APPROVALS:

CUSTOMER APPROVAL

APPROVED BY: JMR DATE: 4/10/12

APPROVED AS NOTED DATE: _____

REVISE AND RESUBMIT DATE: _____

AFC APPROVAL

APPROVED BY: Warren Ducharme DATE: 2/26/09

REVISIONS:				
Δ	DATE	REV. BY:	CHECKED BY:	DESCRIPTION

AMERICAN FOODSERVICE COMPANY

MANUFACTURER OF QUALITY FOODSERVICE EQUIPMENT

P.O. BOX 56 SAVANNAH, TN 38372

PHONE 731-925-2200 FAX 731-925-2840

VETERANS CANTEN #676

TOMAH, WI

ITEM# & NAME:

STORAGE CABINET 55W X 20 X 80H

DATE: 02/12/09

SCALE: NTS

DRAWN BY: JCW

CHECKED BY: ---

SUBMITTED BY:

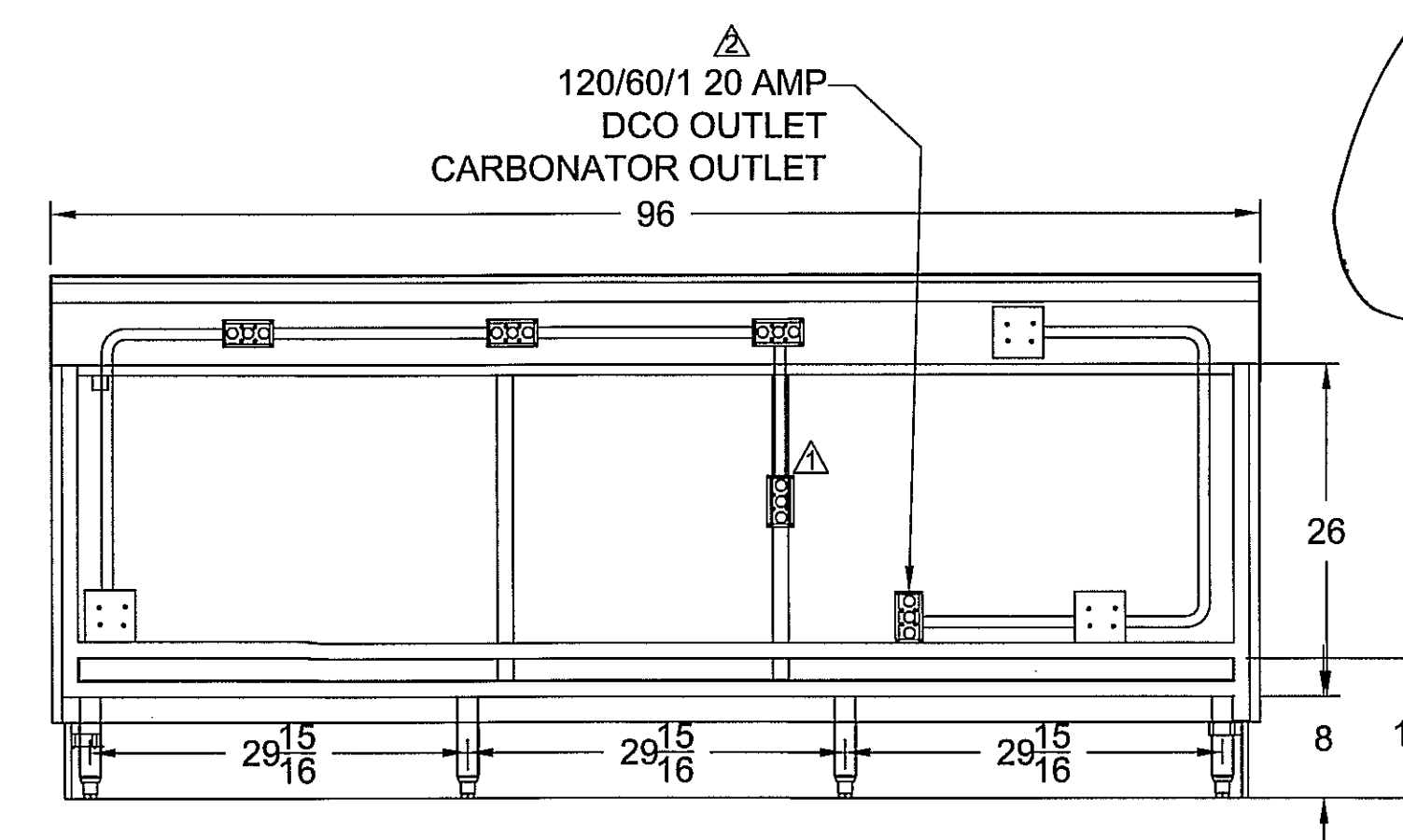
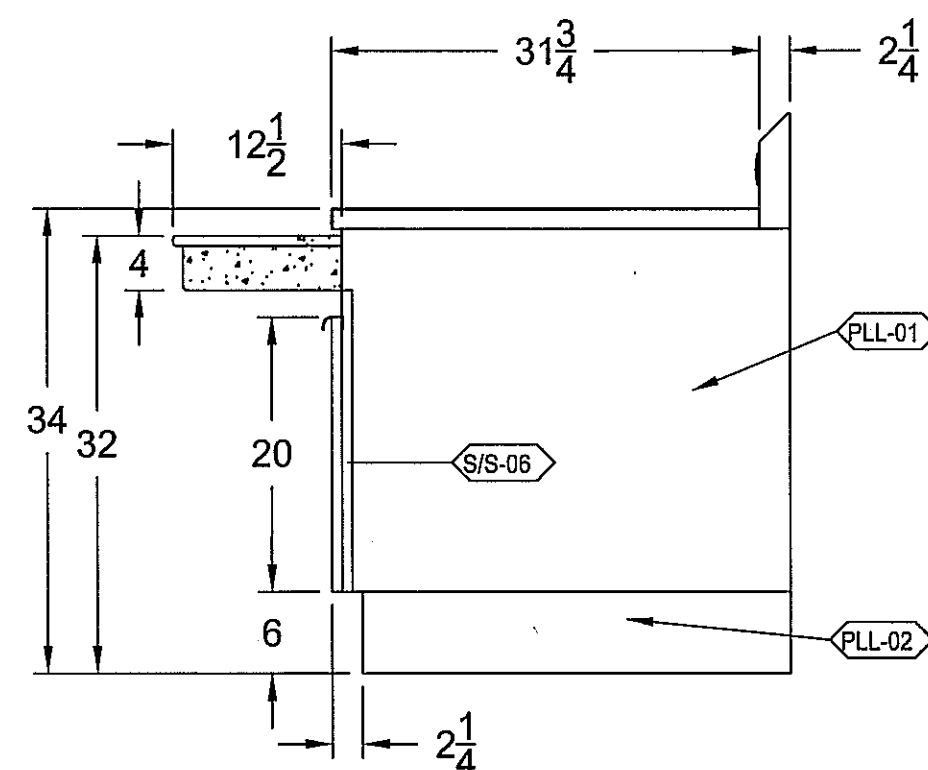
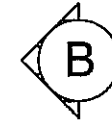
PROJECT / PRODUCT

090123-BB

SHEET NO. M-10.2

24X36 D-SIZE

0-Drawing Sheet 7/18/05



Please identify
light switch location

**NOTE: LAMINATE NOT STANDARD COLOR
NO STRIPE**

LISTED	1. Foodservice equipment manufactured by American Foodservice Company is built in accordance with the latest requirements and standards of NSF International (Sanitation) and Underwriters Laboratories (Safety). 2. In the event a state or local code requirement exceeds those of NSF International and/or Underwriters Laboratory, failure to notify American Foodservice Company in advance of production and in writing, may result in the equipment failing to pass local inspection(s) and/or additional charges for making modifications to the equipment.
--------	--

2F 98	
CUSTOM-BUILT FIELD SERVICE EQUIPMENT	

◇ GENERAL NOTES	
ITEM	DESCRIPTION

○○○ COMPONENTS						
ITEM	QTY	MANUFACTURER, PART #, AND DESCRIPTION	AFC PART #	SUPPLIED BY:	INSTALLED BY:	
①	5	VILLAGE SQUARE P353-26 3" WIRE PULL	043190	AFC	AFC	
②	15	BLUM 71T6680 170° HINGE	760004	AFC	AFC	
③	15	BLUM 17SH7100 HINGE PLATE	477073	AFC	AFC	
④	8	KICKPLATE LEG CLIP CHG #A76-4460	042400	AFC	AFC	
⑤	8	BULLET FOOT - CHG #A10-0851-C	041248	AFC	AFC	
⑥	4	HANDY BOX	221540	AFC	AFC	
⑦	4	GFCI COVER	221230	AFC	AFC	
⑧	4	120 VOLT OUTLET	221090	AFC	AFC	
⑨	3	4 X 4 HANDY BOX	221590	AFC	AFC	
⑩	3	4 X 4 COVER	221600	AFC	AFC	
⑪	8	J16-1000-SQ BLK END CAP	271240	AFC	AFC	
⑫	3	AFC STANDARD T-5 TRAY RAIL LIGHTS	222436	AFC	AFC	
⑬	1	2" RUBBER GROMMET	623120	AFC	AFC	

○○○○○ MATERIAL / FINISH			
SSL = Stainless Steel Laminate PLL = Plastic Laminite MMS = Man Made Stone STN = Stone SLS = Solid Surface CIB = Cutting Board	PLY = Plywood NOD = Wood STA = Stain PNT = Paint TLF = Tile	S/S = Stainless Steel STL = Steel GLV = Galvanized Metal ALU = Aluminum SNO = Sound Deadener	BRK = Brick CRB = Cove Base MLD = Molding GLS = Glass INS = Insulation

⚙️/S-01	14 GA 304 S/S
⚙️/S-02	16 GA 304 S/S
⚙️/S-03	18 GA 304 S/S
⚙️/S-04	1 1/4" S/S SQ TUBE
🔧-PLY-01	3/4" PLYWOOD
🍷TN-01	CAESARSTONE QUARTZ SURFACE CHOCOLATE TRUFFLE #6350
🌳LL-01	PIONITE, SUEDE, OILED CHERRY #WC421
👉LL-02	KICKPLATE - BLACK CODEMO
👉LL-03	
👉LL-04	
⚙️/S-05	1 5/8" S/S TUBE
⚙️/S-06	20 GA 304 STAINLESS STEEL

↑
↓

Please identify light switch location

APPROVALS	
CUSTOMER APPROVAL	
<input type="checkbox"/> APPROVED BY _____	DATE: _____
<input checked="" type="checkbox"/> APPROVED AS NOTED Junkie	DATE: <u>4/10/12</u>
<input type="checkbox"/> REWIS & RESUBMIT _____	DATE: _____
AFC APPROVAL	
<input type="checkbox"/> APPROVED BY _____	DATE: _____

△ REVISIONS				
ITEM	DATE	REV. BY:	CHECKED:	DESCRIPTION
①	4/9/12	WD		ADDED RUBBER GROMMET & BOX
②	4/9/2012	TLP		CHANGED 15 AMPS TO 20 AMPS AND MADE HANDY BOX VERTICAL IN ELEVATION "A"