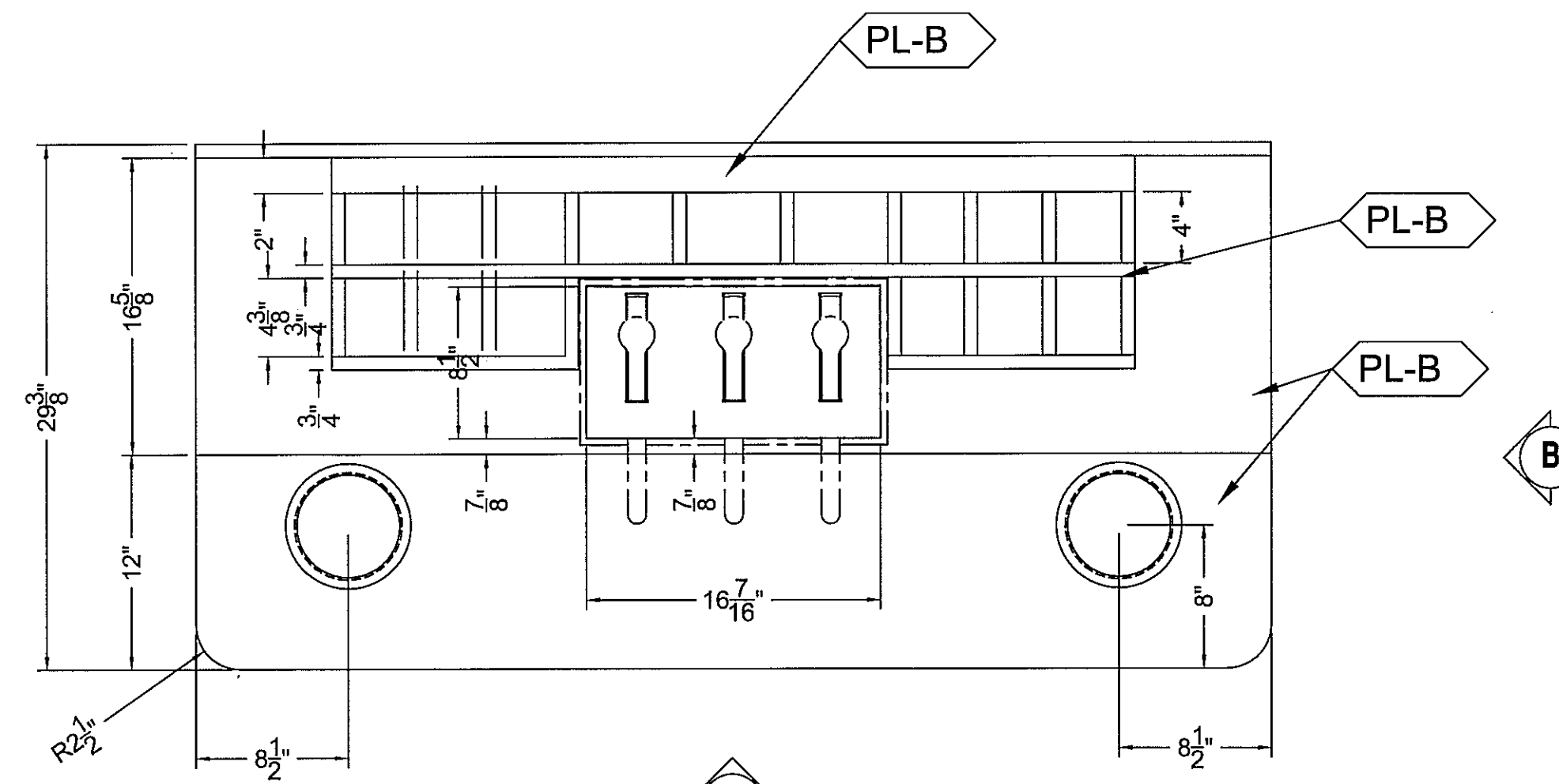
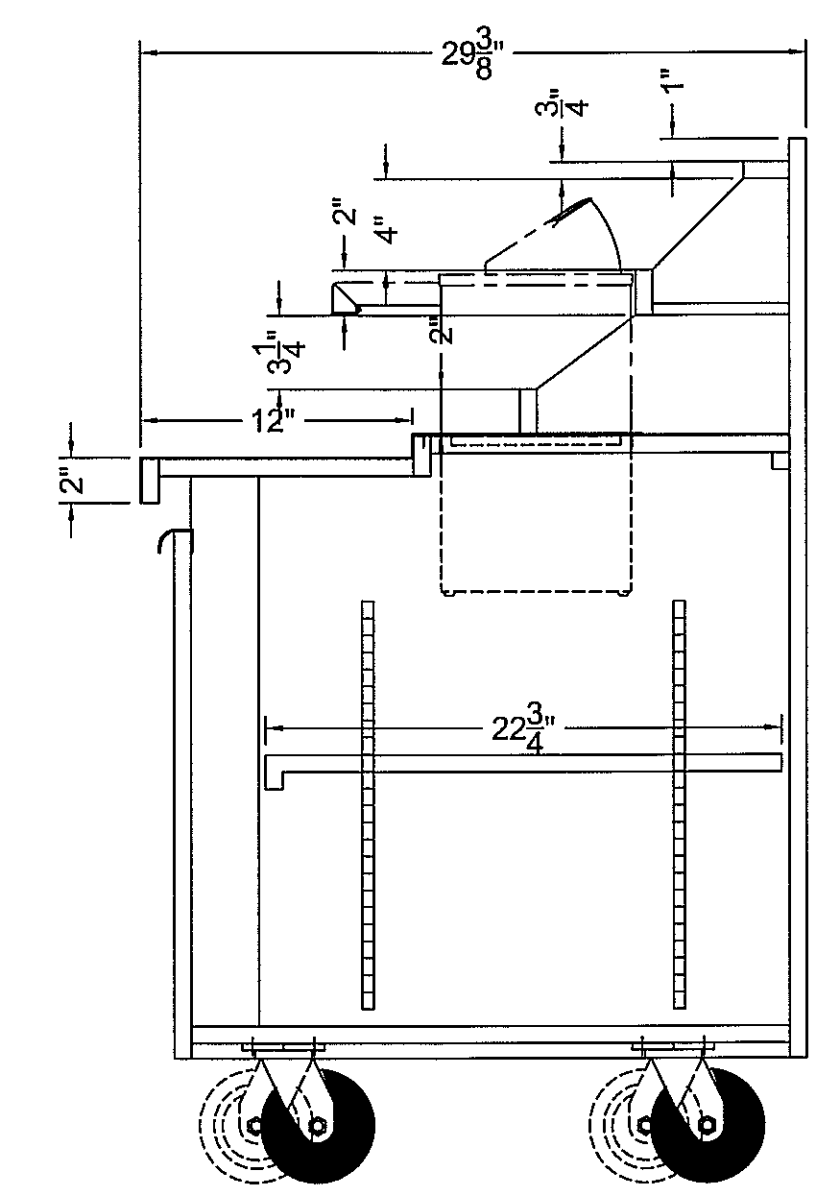


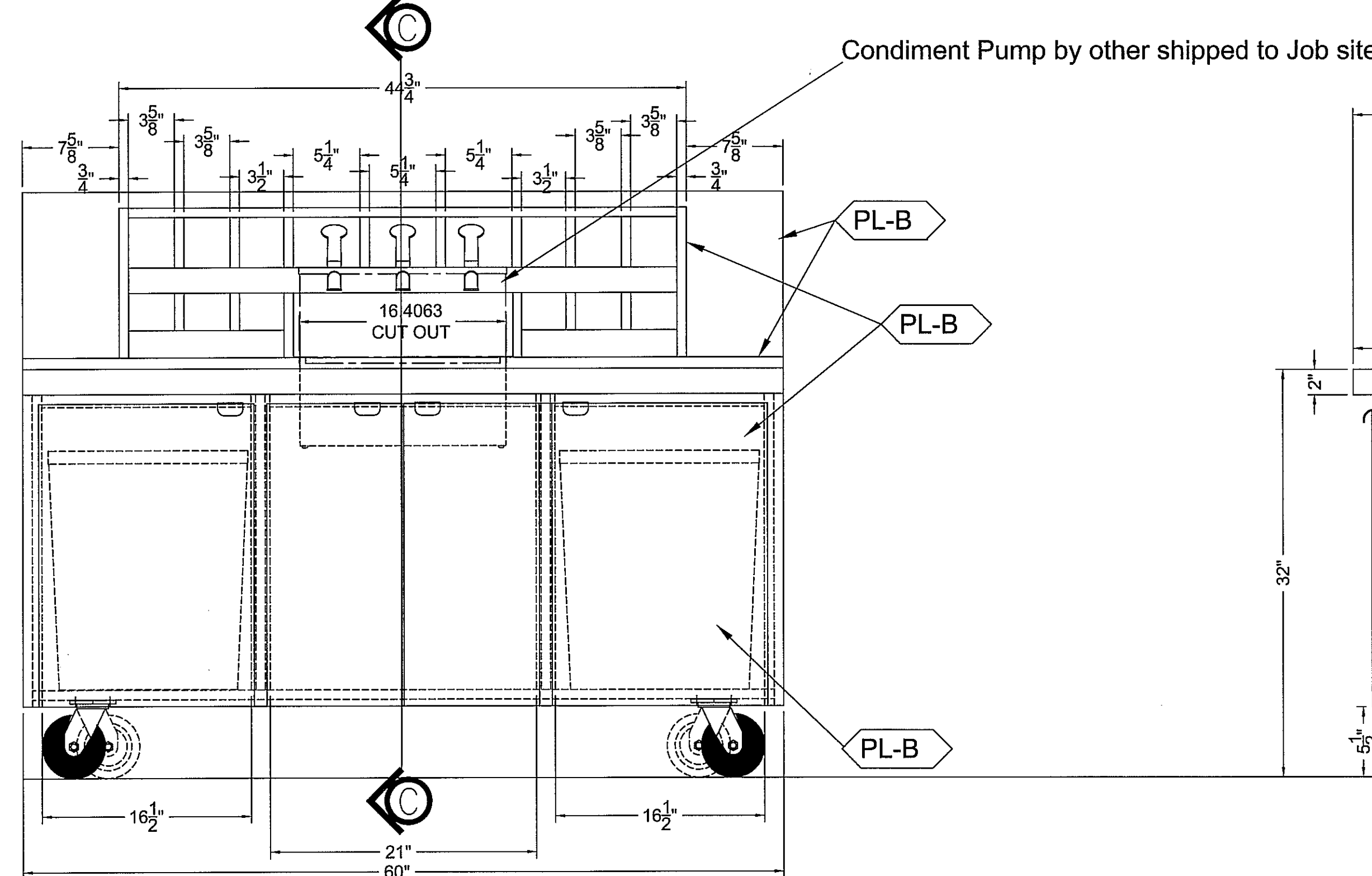
NOTE: SPECIAL COLORS  
NO STRIPE



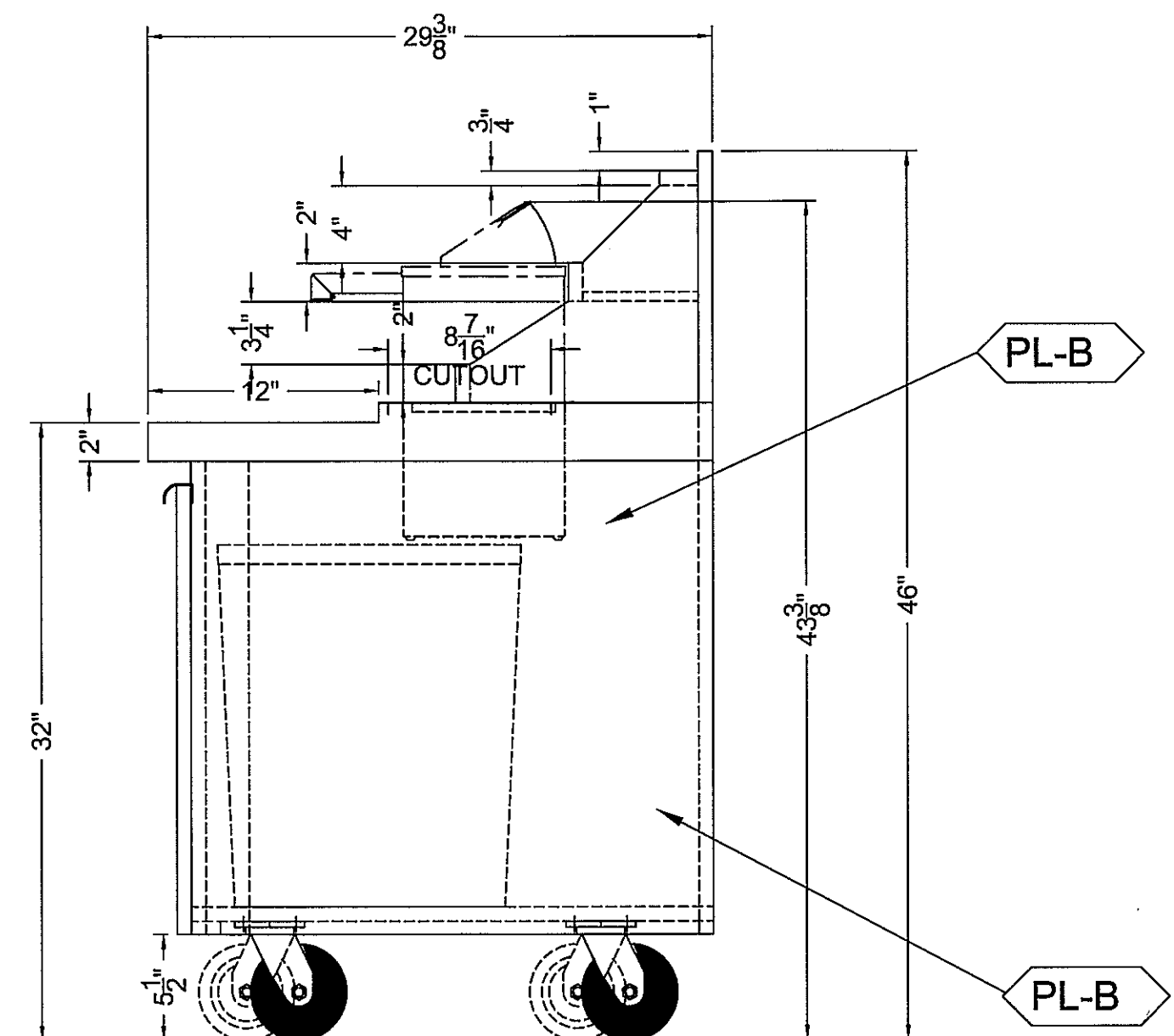
PLAN VIEW



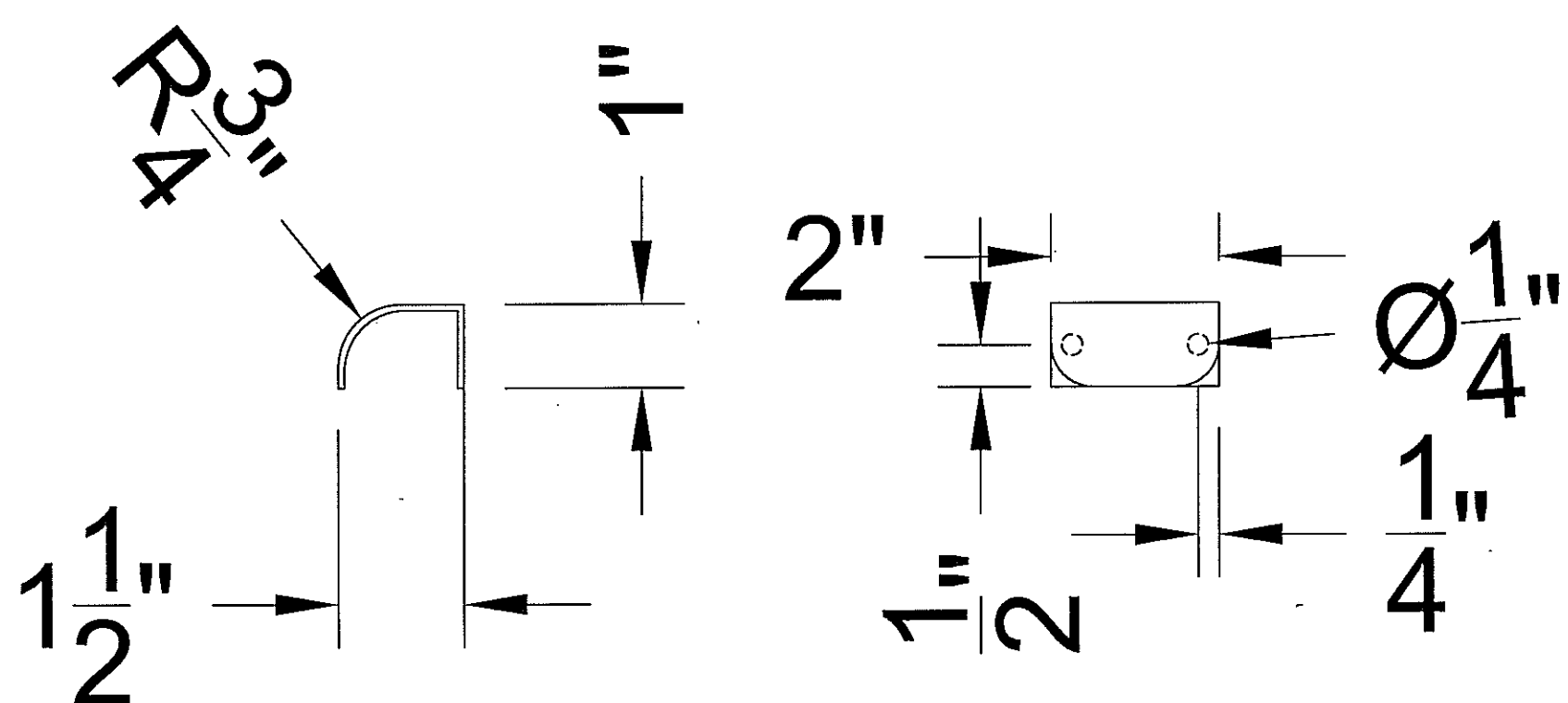
SECTION C-C



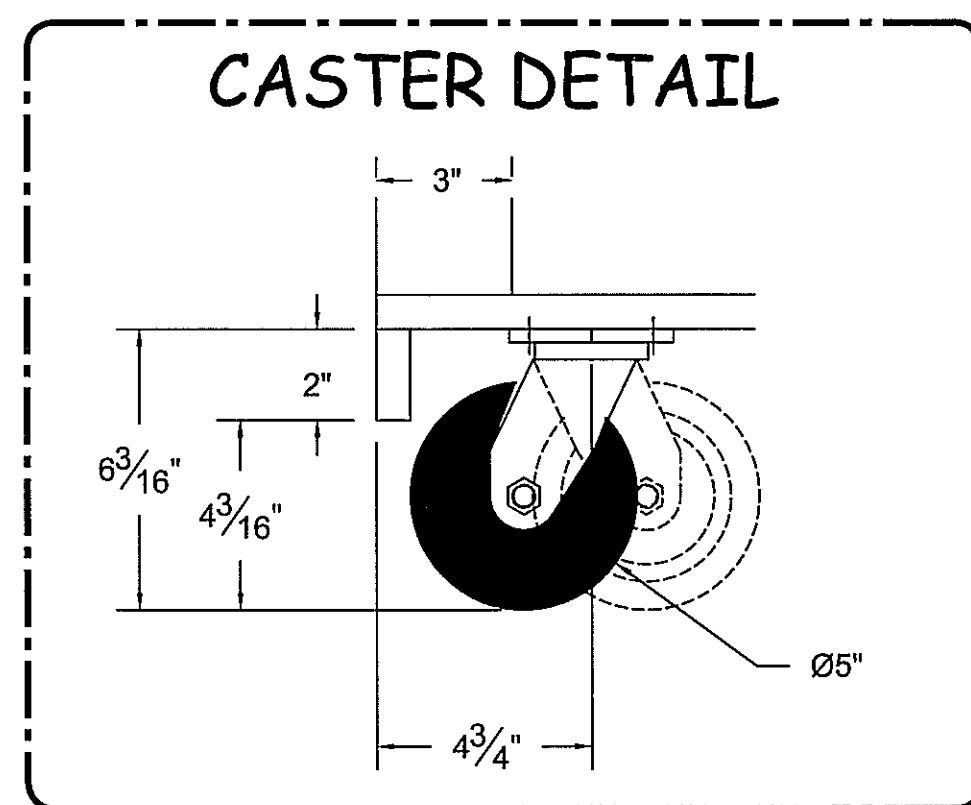
FRONT ELEVATION



END ELEVATION



14ga S/S HANDLE  
QTY 4



CASTER DETAIL

LISTED

2F98

CUSTOM-BUILT  
FOOD SERVICE  
EQUIPMENT

1. Foodservice equipment manufactured by American Foodservice Company is built in accordance with the latest requirements and standards of NSF International (sanitation) and Underwriters Laboratories (safety).

2. In the event a state or local code requirement exceeds those of NSF International and/or Underwriters Laboratory, failure to notify American Foodservice Company in advance of production and in writing, may result in the equipment failing to pass local inspection (s) and/or additional charges for making modifications to the equipment.

GENERAL NOTES:	
A	ALL MILL WORK CONSTRUCTION 3/4" PLYWOOD WITH WHITE INTERIOR
B	COUNTERS, TOPS, AND BODY TO BE PLASTIC LAMINATE

00000 FINISH SCHEDULE:				
SSL = Stainless Steel Laminite	NRS = Natural Stone	S/S = Solid Surface	TLE = Tile	STA = Stain
MMS = Man Made Stone	S/S = Stainless Steel	CVB = Cove Base	SYN = Stone	BRK = Brick
PL = Plastic Laminite	SHM = Sheet Metal	PNT = Paint		
PL-A				
PL-B	PIONITE - SUEDE, OILED CHERRY			
PL-C	WHITE MELAMINE ON ALL INTERIOR SURFACES			

COMPONENTS					
ITEM	QTY	MANUFACTURER, PART #, AND DESCRIPTION	AFC PART #	SUPPLIED BY:	INSTALLED BY:
01	8	BLUM HINGE SELF CLOSING BLUM# 7119680	760004	AFC	AFC
02	8	BLUM HINGE PLATE 0MM BLUM# 175H7100	760011	AFC	AFC
03	4	S/S HANDLE		AFC	AFC
04	1	SUPPORT STANDARD 72" ZINC JFH# 255	041700	AFC	AFC
05	4	ZINC SHELF CLIPS JFH# 256ZC	478020	AFC	AFC
06	2	TRASH CHUTE J92-1000	044401	AFC	AFC
07	4	RUBBERMAID #FG294700 GREY	072813	AFC	AFC
08	2	#5-30-314GF-PLT1-VL JARVIS	043511	AFC	AFC
09	2	#5-30-314-GF-PLT1 JARVIS	043521	AFC	AFC

QTY= 1

APPROVALS:

CUSTOMER APPROVAL

☒ APPROVED BY:

DATE: 4/10/12

☐ APPROVED AS NOTED:

DATE: -

☐ REVISE AND RESUBMIT:

DATE: -

AFC APPROVAL

☐ APPROVED BY: Warren Ducharme

DATE: -

REVISIONS:				
0	DATE	REV. BY:	CHECKED BY:	DESCRIPTION
1	-	-	-	
2	-	-	-	
3	-	-	-	

AMERICAN  
FOODSERVICE COMPANY

MANUFACTURER OF QUALITY FOODSERVICE EQUIPMENT  
P.O. BOX 56 SAVANNAH, TN 38372  
PHONE 731-925-2200 FAX 731-925-2840

CORIAN CERTIFIED

A3435

CORIAN

MEMBER

NAFEM

VETERANS CANTEN # 676

TOMAH, WI

UNIT #1 CONDIMENT COUNTER

DATE: 3/26/12

SCALE:

DRAWN BY: WD

CHECKED BY: ---

SUBMITTED BY: ---

PROJECT / PRODUCT

107 - -1

SHEET NO. M1

ITEM# & NAME: