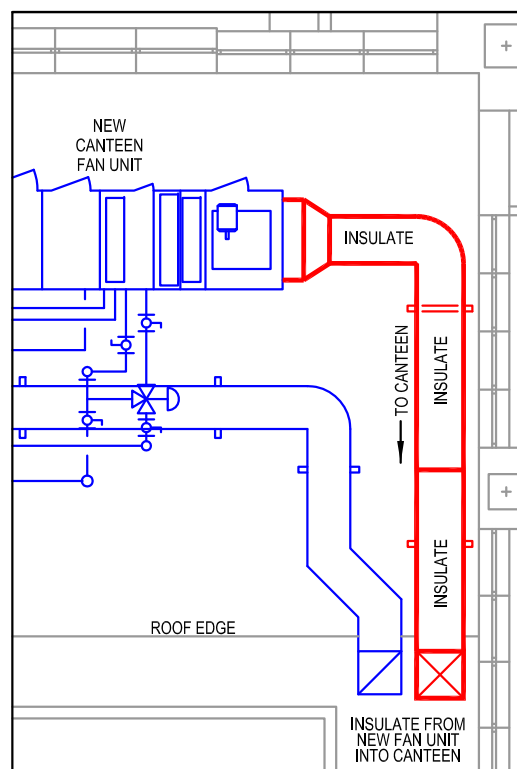
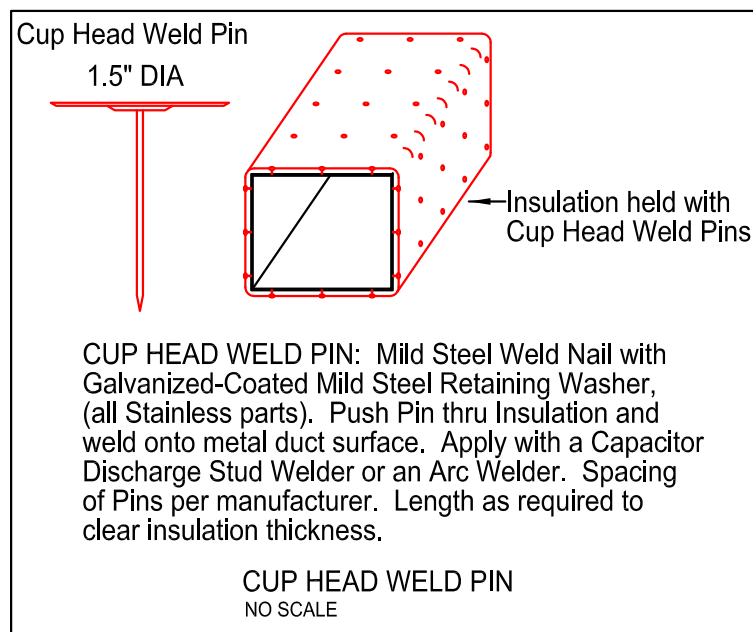
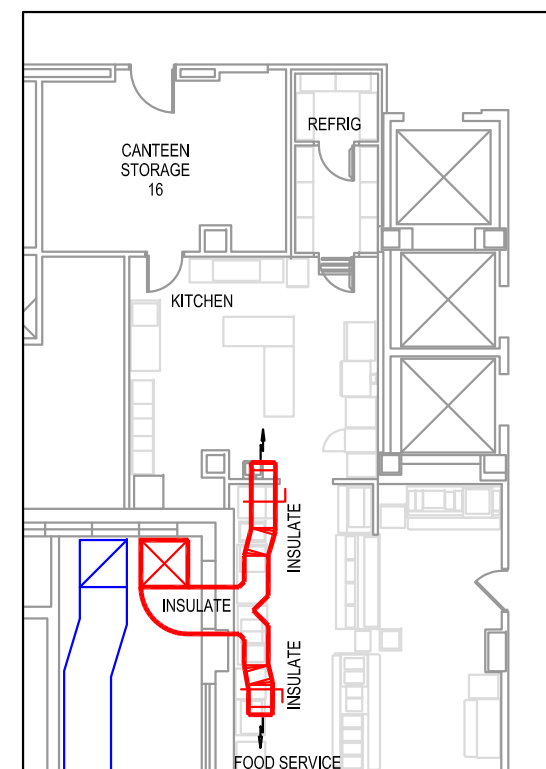


1. Install new 2" thick Insulation Board with EPDM Waterproofing (all 4-sides) on A/C Ductwork from new Fan Unit, to where ductwork enters Basement Canteen.
  - a. On roof and on "exposed" side of A/C ductwork "drop" to Basement, attach insulation to duct with "Cup-Head-Weld-Pins", prior to installing EPDM. Include a means of preventing "sag" on underside of roof duct.
  - b. On other 3-sides of "drop" to Basement where A/C ductwork is surrounded by existing structures, use "Cup-Head-weld-Pins" as much as possible, and install Stainless Steel Bands around insulation and EPDM.
2. Inside Canteen, install new 2" thick Mineral Fiber Blanket Insulation with White All-Service-Jacket (ASJ) on all 4-sides, to where new duct will end, and where existing duct ends after "Splitter".
3. Refer to Specifications 07 53 23 EPDM WATERPROOFING and 23 07 11 HVAC DUCTWORK INSULATION.
4. Furnish Submittals for VA written approval.



1ST FLOOR ROOF 0' 5' 10'



BASEMENT CANTEEN 0' 5' 10'

ALL WORK IN CANTEEN SHALL BE DONE  
AFTER 4:30PM OR ON WEEKENDS

		<p><b>James E. Van Zandt</b> Department Of Veterans Affairs Medical Center</p>	Drawing Title <b>INSULATION</b>		Project Title <b>INSTALL A/C CANTEEN KITCHEN</b>		Date 		<b>VAMC</b>		
			Approved: Division Chief 		Building Number 		Checked 			Project No. 	
			Approved: Service Director 		Location <b>VAMC Altoona, Pennsylvania</b>		Drawn 			DRAWING NO. 	
										Dwg. Of 	
Revisions 		Date 									