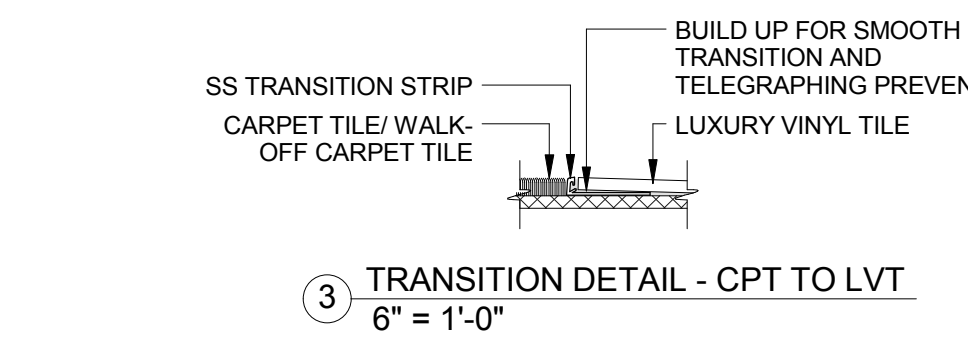
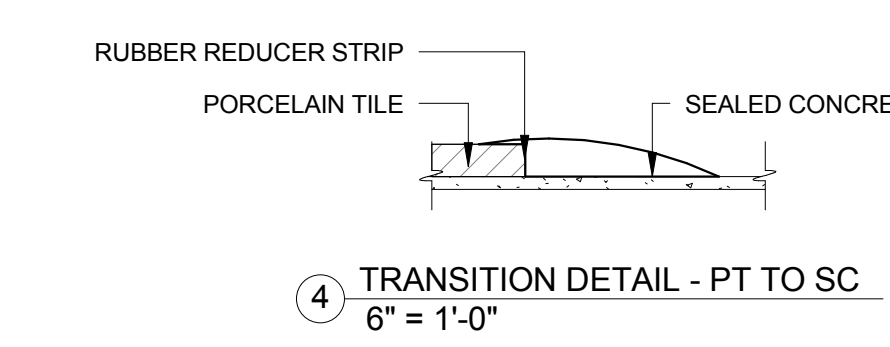
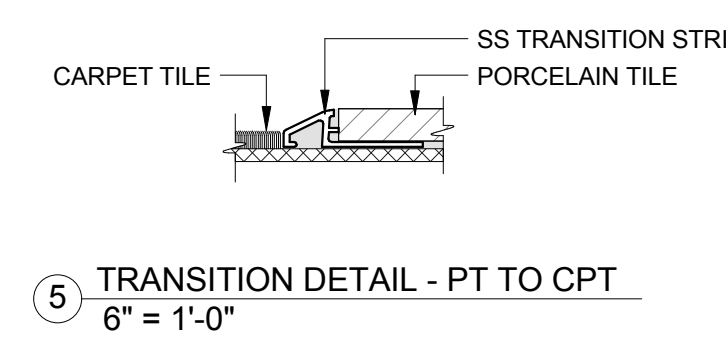
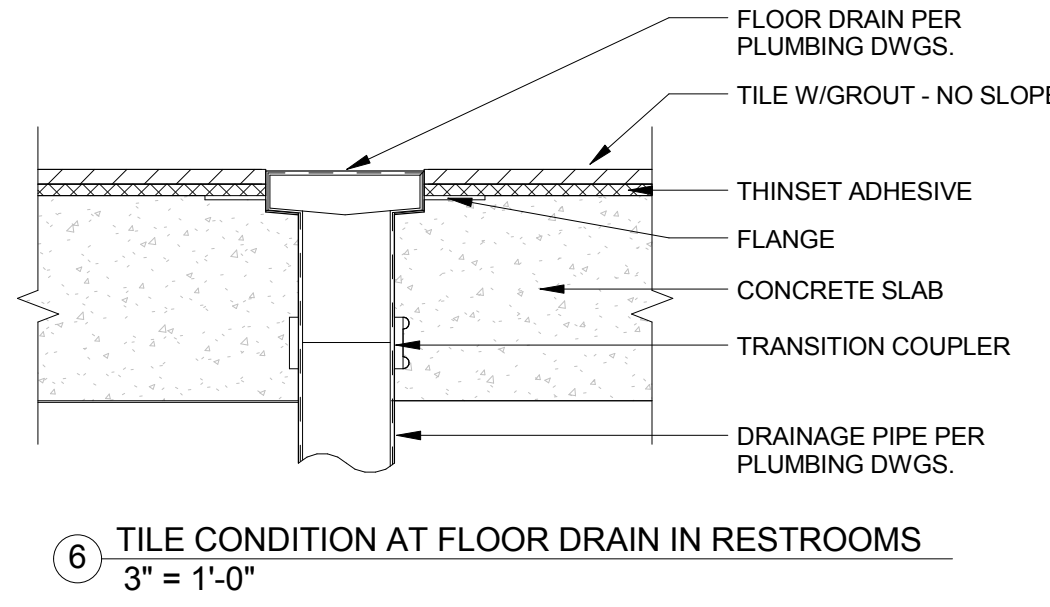
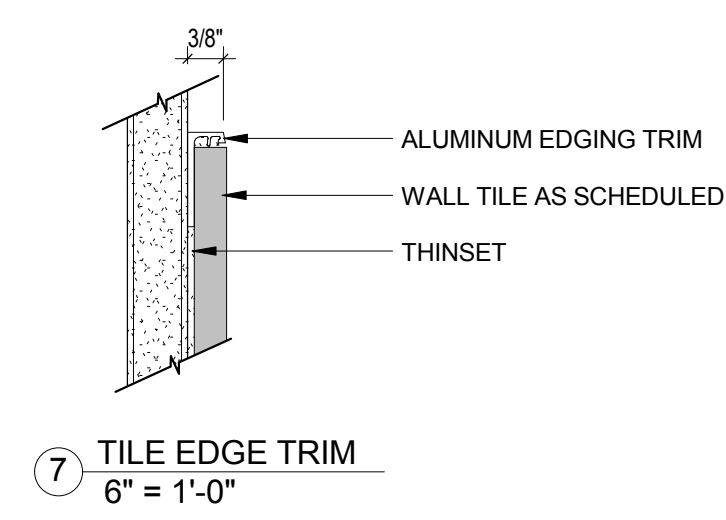
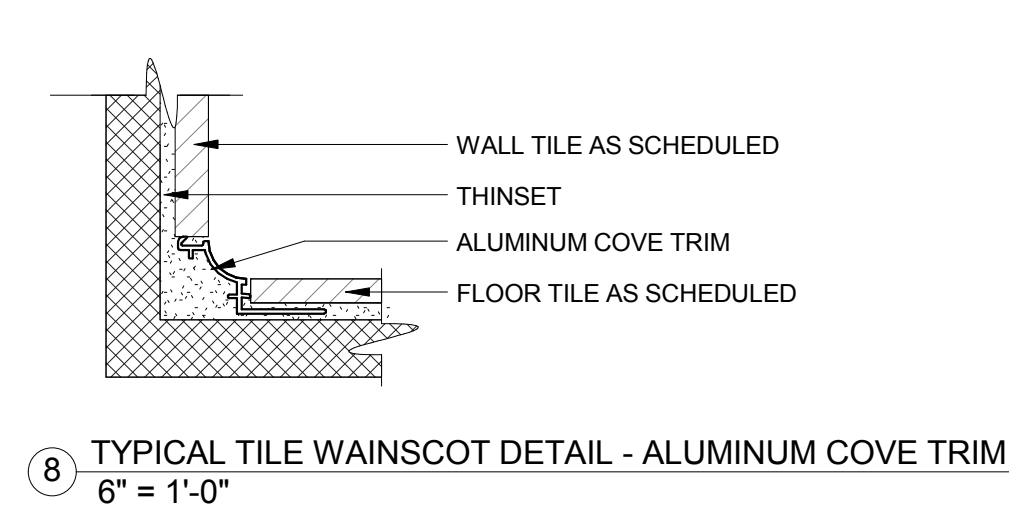
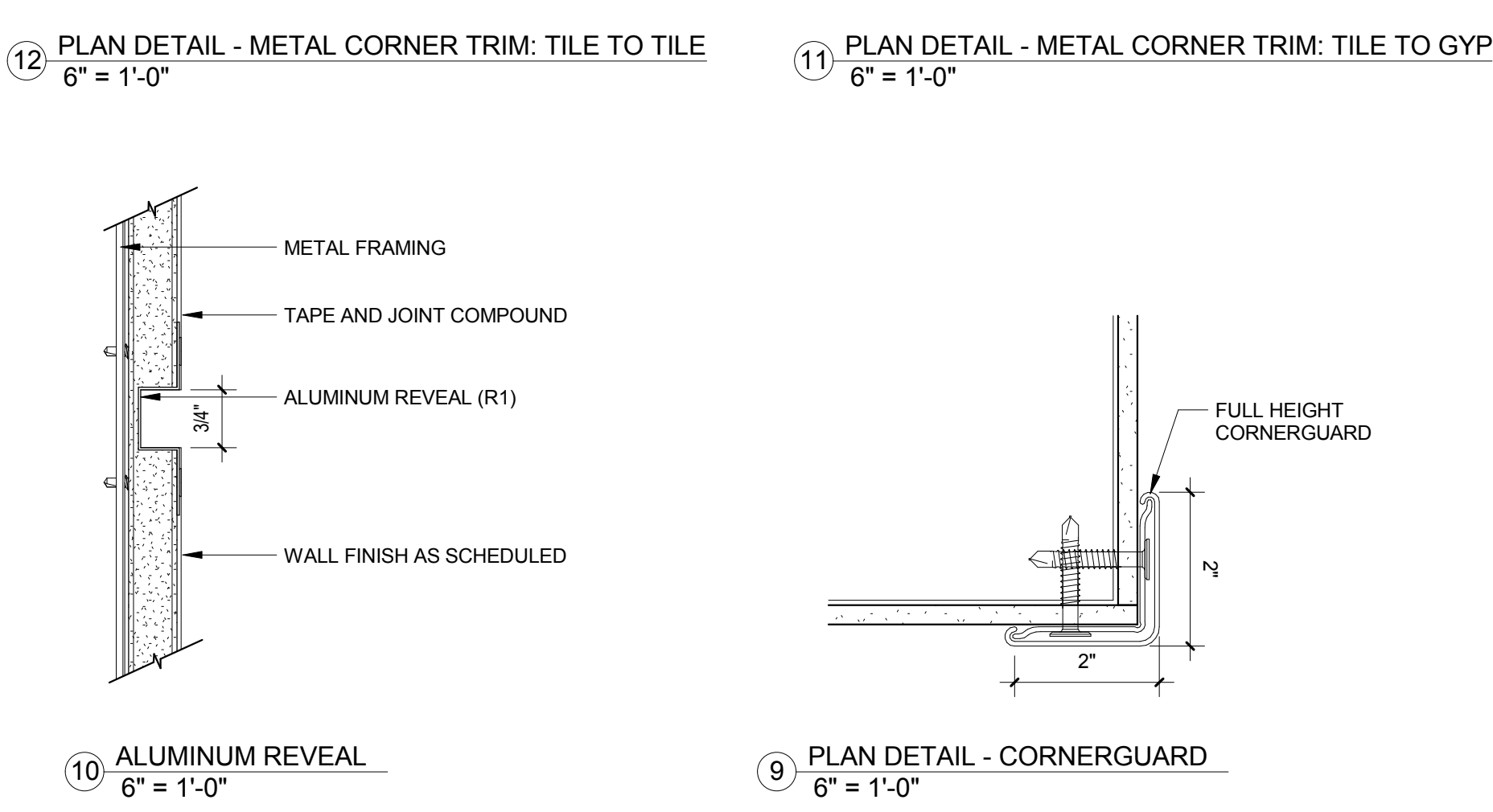
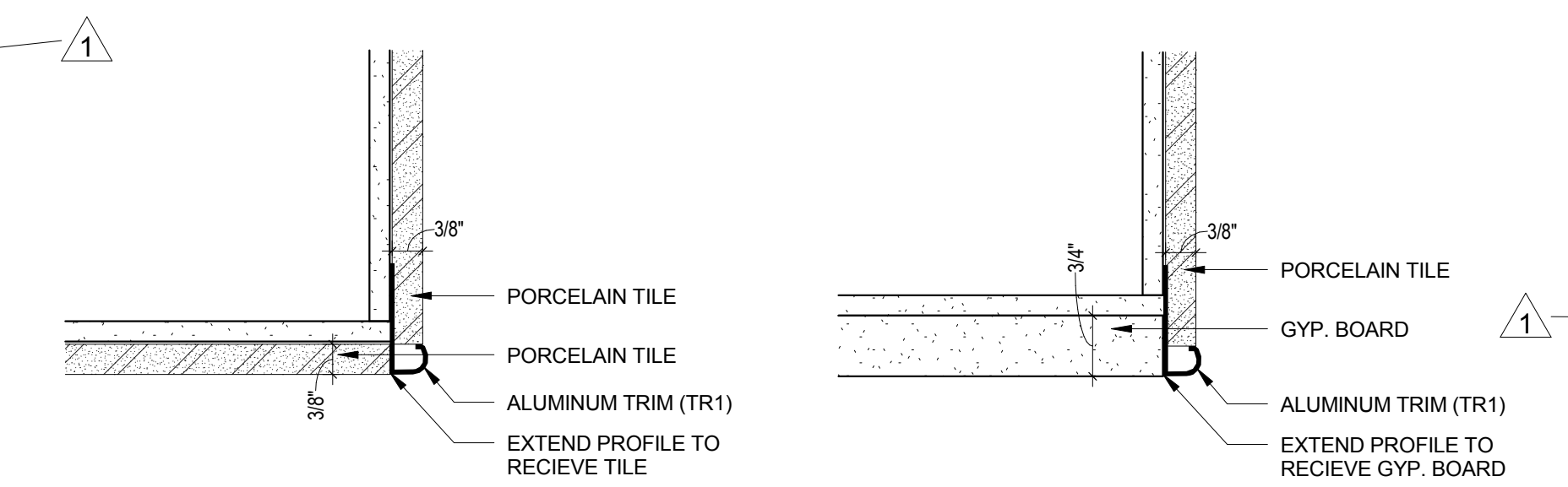


MATERIAL LEGEND						
ABBREV.	DESCRIPTION	MANUFACTURER	SERIES/COLLECTION	COLOR	SIZE	NOTES
ACT	ACOUSTICAL CEILING TILE	ARMSTRONG	OPTIMA - TEGULAR	WHITE	24" x 24" x 1"	
WCPT	WALK OFF CARPET	J+J FLOORING	RUNWAY MODULAR	1418 UMBER CHIC	24" x 24"	
CPT	CARPET	J+J FLOORING	PAYDAY MODULAR	1418 CASH COW	24" x 24"	
LVT	LUXURY VINYL TILE	ARMSTRONG	NATURAL CREATIONS	TP600 FACTORY FLOOR FLAX SEED	9" x 48"	
PT1	PORCELAIN TILE	FLORIM	ELEMENT	LIGHT GRAY	12" x 24"	
PT2	PORCELAIN TILE	FLORIM	ELEMENT	BRONZE	12" x 24"	
PT3	PORCELAIN TILE	AMERICAN OLEAN	THEORETICAL	LOGICAL GRAY TH95	12" x 24"	
RB	RUBBER BASE	ROPPE	PINNACLE	193 BLACK BROWN	4"	
SC	SEALED CONCRETE					
P1	PAINT	BENJAMIN MOORE	-	THUNDER AF-685	-	
P2	PAINT	BENJAMIN MOORE	-	DEEP CREEK 1477	-	
P3	PAINT	BENJAMIN MOORE	-	WHITE WISP OC-54	-	
P4	PAINT	BENJAMIN MOORE	-	AMHERST GRAY HC-167	-	
CG	CORNER GUARD	INPRO	IPC	BRUSHED SILVER- SM-5E025	-	
ST	STAIR TREAD	ROPPE	RAISED CIRCULAR VANTAGE	178 PEWTER	-	
PL	PLASTIC LAMINATE	FORMICA	FORMICA LAMINATE	8827-58 SARUM TWILL	-	
SS	SOLID SURFACE	WILSONART		HOT STONE 9201GS	1/2" THICK	
SHADES	WINDOW SHADES	LUTRON	BASKETWEAVE 90	OYSTER/PEARL GREY SP14-90-3	-	3% OPENNESS
METAL PANEL	EXTERIOR CANOPY	ALLIANCE		REGAL WHITE	-	
INT. DOOR LITES	RESIN	3FORM	VARIA ECORESIN	HALFTONE COLOR - 188/183/173 OPAQUE (SCALE D)	1/8" THICK	
GLAZING	EXTERIOR GLAZING ON WINDOWS	PPG	SOLARBAN 70XL	SOLAR BLUE	-	
ALUM TRIM AND FRAMES	ANNOZIDIZED ALUMINUM				-	
G1	GROUT	MAPEI	-	93 WARM GRAY	-	USE WITH PT3
G2	GROUT	MAPEI	-	11 SAHARA BEIGE	-	USE WITH PT1, PT2
TR1	CORNER TRANSITION TRIM	SCHLUTER	RONDEC	ANODIZED ALUMINUM	-	TILE-GYP: TILE-TILE
R1	ALUMINUM REVEAL	FRY REGLET	DRM-50-75	ANODIZED ALUMINUM	-	

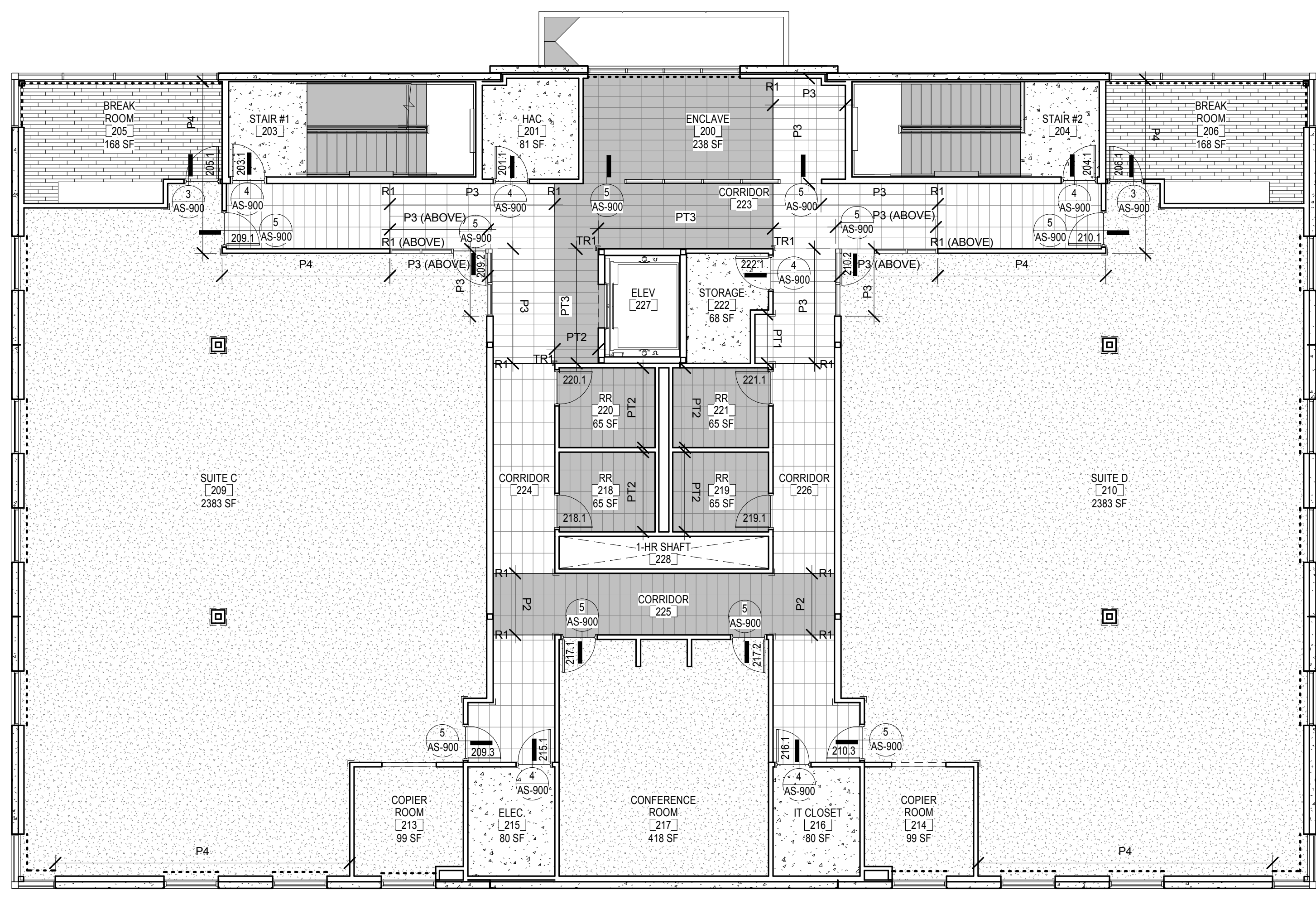


ROOM FINISH SCHEDULE											
ROOM NO	ROOM NAME	FLOOR FINISHES		WALL FINISHES				ID CEILING KEY	ID FINISH REMARKS KEY		
		MATERIAL	BASE	NORTH	EAST	SOUTH	WEST				
100	ENTRY	WCPT	RB	P1	P1	P1	P1	ACT			
101	HAC	SC	RB	P1	P1	P1	P1	ACT			
102	STORAGE	SC	RB	P1	P1	P1	P1	EXPOSED			
103	STAIR #1	SC	RB	P1	P1	P1	P1	EXPOSED			
104	STAIR #2	SC	RB	P1	P1	P1	P1	EXPOSED			
105	BREAK ROOM	LVT	RB	P4	P1	P1	P1	ACT/P3			
106	BREAK ROOM	LVT	RB	P4	P1	P1	P1	ACT/P3			
107	SUITE A	CPT	RB	P1/P3/P4	P1/P4	P1/P3/P4	P1/P3/P4	ACT			
110	SUITE B	CPT	RB	P1	P1/P4	P1/P3/P4	P1/P3/P4	ACT			
113	COPIER ROOM	CPT	RB	P1	P1	P1	P1	ACT			
114	COPIER ROOM	CPT	RB	P1	P1	P1	P1	ACT			
115	ELEC.	SC	RB	P1	P1	P1	P1	EXPOSED			
116	IT CLOSET	SC	RB	P1	P1	P1	P1	ACT			
117	MECH.	SC	RB	P1	P1	P1	P1	EXPOSED			
118	CONF. ROOM	CPT	RB	P1	P1	P1	P1	ACT/P3			
119	RR	PT2	PTB	PT2	P1/PT1*	P1/PT1*	P1/PT1*	P3	PT1 WAINGSCOT UP TO 4'-0"		
120	RR	PT2	PTB	P1/PT1*	P1/PT1*	P1/PT1*	P1/PT1*	P3	PT1 WAINGSCOT UP TO 4'-0"		
121	RR	PT2	PTB	P1/PT1*	P1/PT1*	P1/PT1*	P1/PT1*	P3	PT1 WAINGSCOT UP TO 4'-0"		
122	RR	PT2	PTB	P1/PT1*	P1/PT1*	P1/PT1*	P1/PT1*	P3	PT1 WAINGSCOT UP TO 4'-0"		
123	EMR	SC	RB	P1	P1	P1	P1	EXPOSED			
124	CORRIDOR	PT1/PT2	RB	P1	P1/P3/PT3	P1	P1	ACT/P3			
125	CORRIDOR	PT1/PT2	RB	P1/PT3	P1	P1/P3	P1	ACT/P3			
126	CORRIDOR	PT1	RB	P1/P3	P1	P1/PT1	P1	ACT/P3			
127	CORRIDOR	PT2	RB	P2	P1	P2	P1	ACT/P3			
128	ELEV.	ENCLAVE	PT1/PT2	RB	P3	P1	P1	ACT/P3			PER MANUF. STANDARDS
201	HAC	SC	RB	P1	P1	P1	P1	ACT			
203	STAIR #1	S/RT	RB	P1	P1	P1	P1	EXPOSED			
204	STAIR #2	S/RT	RB	P1	P1	P1	P1	EXPOSED			
205	BREAK ROOM	LVT	RB	P1	P1	P1	P1	ACT/P3			
206	BREAK ROOM	LVT	RB	P1	P1	P4	P1	ACT/P3			
209	SUITE C	CPT	RB	P1/P3/P4	P1/P4	P1	P1/P3/P4	ACT/P3			
210	SUITE D	CPT	RB	P1	P1/P4	P1/P3/P4	P1/P3/P4	ACT/P3			
213	COPIER ROOM	CPT	RB	P1	P1	P1	P1	ACT			
214	COPIER ROOM	CPT	RB	P1	P1	P1	P1	ACT			
215	ELEC.	SC	RB	P1	P1	P1	P1	ACT			
216	IT CLOSET	SC	RB	P1	P1	P1	P1	ACT			
217	CONFERENCE ROOM	CPT	RB	P1	P1	P1	P1	ACT/P3			
218	RR	PT2	RB	PT2	P1/PT1*	P1/PT1*	P1/PT1*	P3	PT1 WAINGSCOT UP TO 4'-0"		
219	RR	PT2	RB	P1/PT1*	P1/PT1*	PT2	P1/PT1*	P3	PT1 WAINGSCOT UP TO 4'-0"		
220	RR	PT2	RB	PT2	P1/PT1*	P1/PT1*	P1/PT1*	P3	PT1 WAINGSCOT UP TO 4'-0"		
221	RR	PT2	RB	P1/PT1*	P1/PT1*	PT2	P1/PT1*	P3	PT1 WAINGSCOT UP TO 4'-0"		
222	STORAGE	SC	RB	P1	P1	P1	P1	EXPOSED			
223	CORRIDOR	PT1/PT2	RB	P1	P1/P3/PT3	P1	P1/P3	ACT/P3			
224	CORRIDOR	PT1/PT2	RB	P1/PT3	P1	P1/P2/P3	P1	ACT/P3			
225	CORRIDOR	PT2	RB	P1	P1	P1	P1	ACT/P3			
226	CORRIDOR	PT1/PT2	RB	P1/P2/P3	P1	P1/PT1	P1	ACT/P3			
227	ELEV.	-	-	-	-	-	-	-			PER MANUF. STANDARDS
228	1-HR SHAFT	-	-	-	-	-	-	-			UNFINISHED

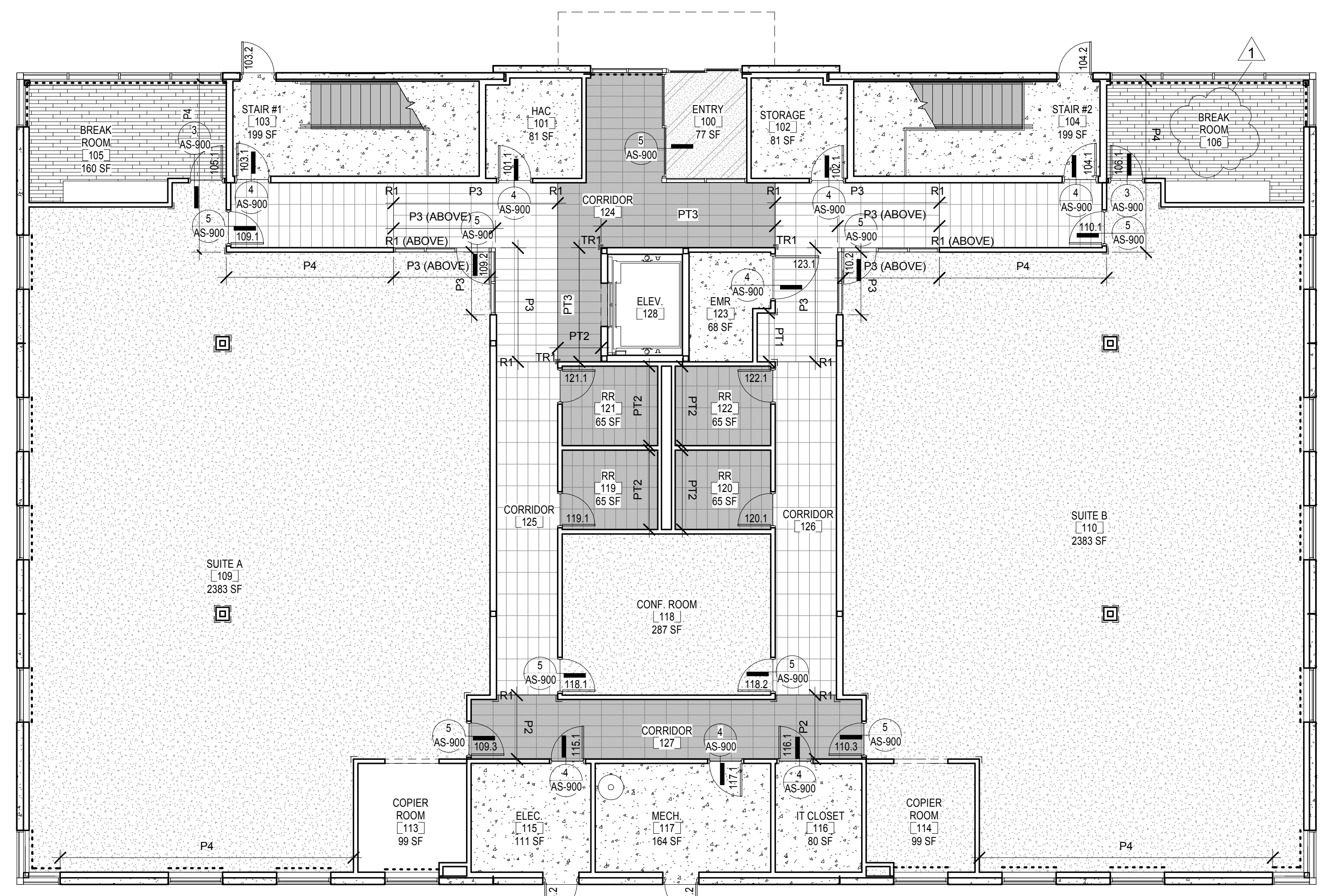
- GENERAL FINISH NOTES
1. ALL WALLS TO BE PAINTED P1, U.N.O.
 2. ALL COUNTERTOPS AND BACKSPLASH TO BE SS, U.N.O.
 3. ALL INTERIOR DOOR AND WINDOW FRAMES TO BE ANNOZIDIZED ALUMINUM, U.N.O.
 4. ALL WINDOW SILLS TO BE PL, U.N.O.
 5. ALL WINDOW SILLS TO BE PL, U.N.O.
 6. ALL INTERIOR WOOD DOORS TO BE MAPLE VENEER WITH CLEAR COAT SATIN FINISH, U.N.O.
 7. ELEVATOR WALL, CEILING AND BASE FINISHES TO BE CHOSEN FROM MANUFACTURERS STANDARD LINE OF FINISHES.
 8. ALL WOOD-LOOK PLANKS TO BE LAID IN THE SAME DIRECTION AS THE LONGEST DIMENSION OF THE ROOM.
 9. ALL CPT TO BE INSTALLED QUARTER TURNED.
 10. PROVIDE ALUMINUM REVEAL R1 (REFERENCE DETAIL 9/AS-900) AT ALL WALL LOCATIONS WHERE PAINT COLOR CHANGES ON THE FACE OF THE WALL. COORDINATE AND ALIGN WITH CHANGES IN FLOOR PATTERN AND CEILING.

FLOOR FINISH LEGEND	
J	FULL-HEIGHT CORNER GUARD FINISH: C51
TR1	METAL CORNER TRIM REFERENCE INTERIOR ELEVATIONS
-----	WINDOW SHADES

FLOOR FINISH LEGEND	
LVT (LUXURY VINYL TILE)	
PT1 (PORCELAIN TILE - FIELD)	
PT2 (PORCELAIN TILE - ACCENT)	
CPT (CARPET TILE)	
WCPT (WALK OFF CARPET TILE)	
SC (SEALED CONCRETE)	
ST (RUBBER STAIR TREAD)	



2 SECOND LEVEL - FLOOR FINISH PLAN
1/8" = 1'-0" F.F.E = 59' - 0"



1 GROUND LEVEL - FLOOR FINISH PLAN
1/8" = 1'-0" F.F.E = 45' - 0"

CONSULTANTS

STRUCTURAL / CIVIL ENGINEER
H2B, INC.
1225 N. LOOP WEST, SUITE 900
HOUSTON, TX 77008
(713) 864-2300

FIRE PROTECTION / TELECOM ENGINEER
PAGE
400 W. CESAR CHAVEZ STREET, SUITE 500
AUSTIN, TX 78701
(512) 472-6721

ARCHITECT & M.E.P. ENGINEER

1313 Westpark Road
Houston, TX 77055
spur-design.com

APPROVED: DIRECTOR

APPROVED: ASSOCIATE DIRECTOR

APPROVED: ASSISTANT DIRECTOR

APPROVED: CHIEF ENGINEER

SHEET TITLE
FLOOR FINISH PLANS & MATERIAL LEGENDS

APPROVED: CHIEF ENGINEER

PROJECT TITLE
NEW ADMINISTRATION BUILDING

PROJECT LOCATION
2002 HOLCOMBE BOULEVARD
HOUSTON, TX 77030

DATE
06-27-17

CHECKED
SAC

DRAWN
MEB

VA PROJECT NUMBER
580-CSI-110

BUILDING NUMBER

DRAWING NUMBER
AS-900

Dwg 57 OF 95

Office of Construction and Facilities Management

U.S. Department of Veterans Affairs

VA FORM 08-6231

FULLY SPRINKLERED