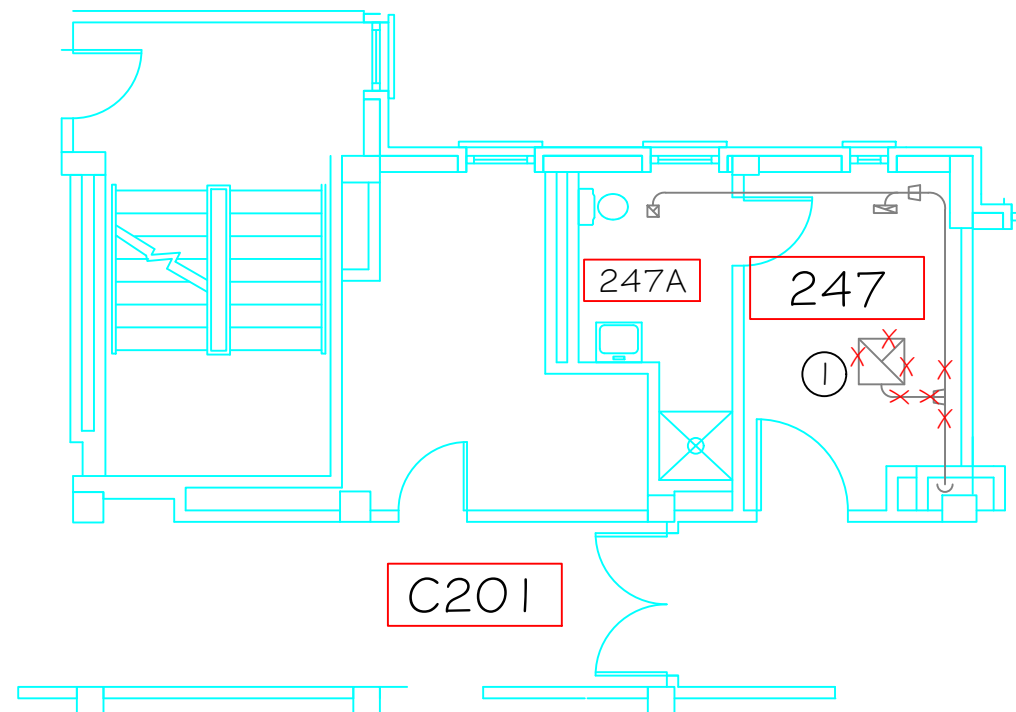


GENERAL NOTES

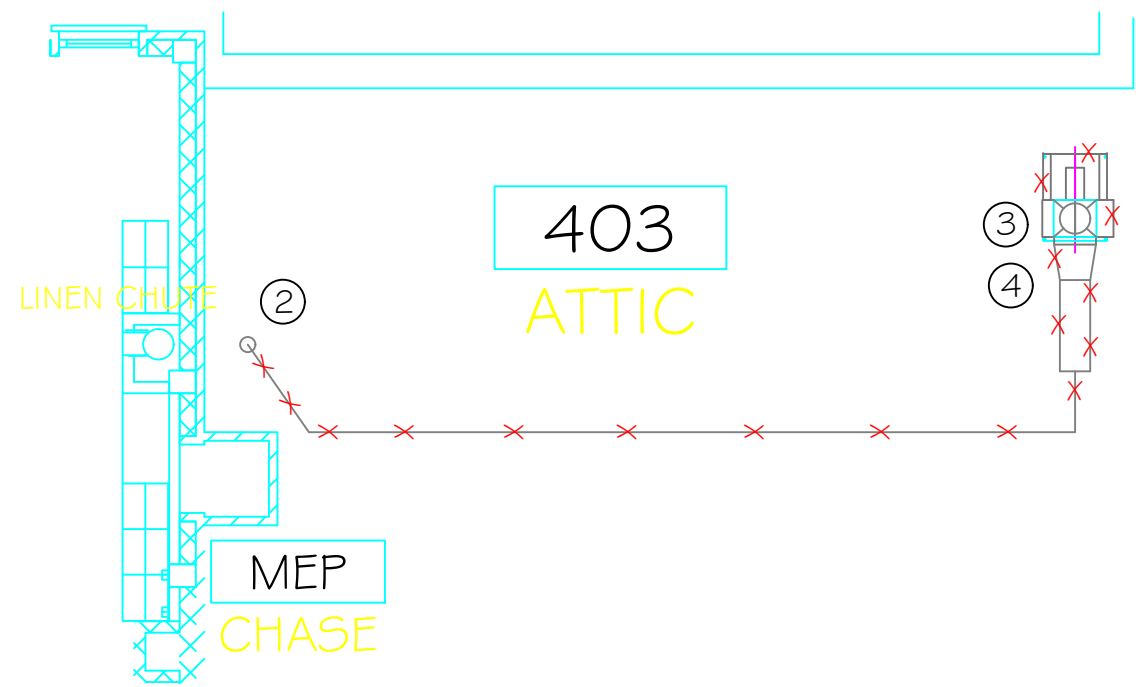
- 1. Measurements/locations are approximate and shall be verified by the Contractor. VA will not be held responsible for any error or variation in any measurements or other data listed.
- 2. Ductwork and equipment has been in service for infectious isolation area. Appropriate PPE and safety procedures required.
- 3. ICRA (infection control risk assessment) required prior to starting any work. Follow all ICRA requirements including (but not limited to) providing negative air for work area and bagging debris prior to removal from work area.



A DEMO SECTION OF EXISTING EXHAUST DUCT, 247-01
NTS


SHEET NOTES

- ① EXISTING 24x24 EXHAUST GRILLE AND 6" DIA BRANCH DUCT TO BE REPLACED.
- ② EXISTING ATTIC FLOOR PENETRATION TO REMAIN. USE CAUTION NOT TO DISTURB/DAMAGE EXISTING INSTALLATION.
- ③ EXISTING ATTIC ROOF PENETRATION TO REMAIN. USE CAUTION NOT TO DISTURB/DAMAGE EXISTING INSTALLATION.
- ④ DISCONNECT AND MAKE SAFE EXISTING ELECTRICAL. RE-USE OF EXISTING EMT RACEWAYS WILL BE PERMITTED WHERE APPLICABLE.



B DEMO SECTION OF EXISTING EXHAUST DUCT, EF, ATTIC 403
NTS

X IDENTIFIES EXISTING DUCT AND EQUIPMENT TO BE DEMO'D. NOTE THAT DEMO LOCATIONS AND BOUNDARIES SHOWN ARE APPROXIMATE, NOT TO SCALE, AND MUST BE FIELD VERIFIED BY CONTRACTOR.

		Approved: Medical Center Facility Manager	Project Title UPGRADE EXH SYS 247-01		Drawing Title DEMO OF EXISTING		Project Number 564-16-TBD		 Engineering Service Department of Veterans Affairs	
		Approved: Engineering Service Chief	Measures one inch or not to scale! 0 1"		Location VAMC - Fayetteville, AR		Building Number ONE (01)			
Notes and/or Revisions:			Scale: NTS		Drawing Number D-1					
Date			Checked ENG		Date 21 JUN 16					
					Sheet 1 of 5					