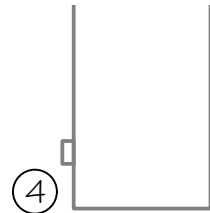
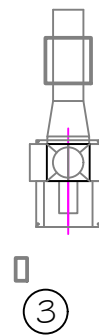
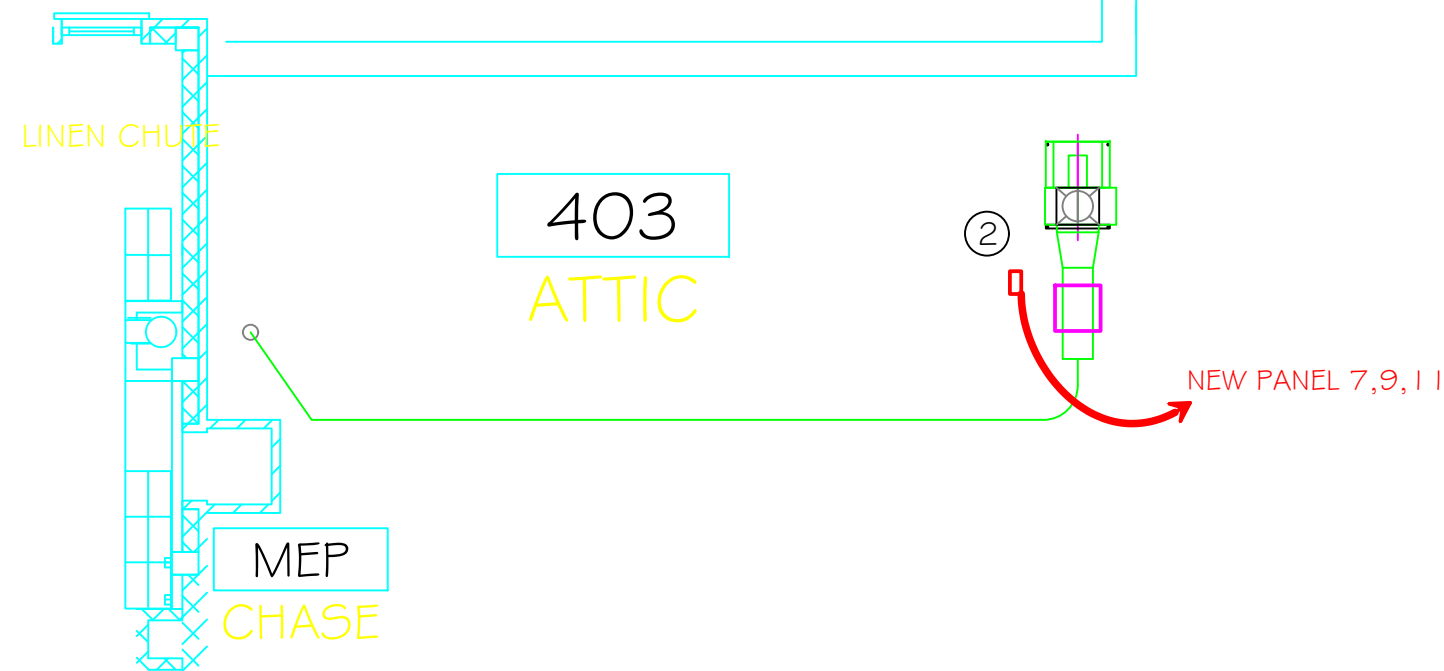
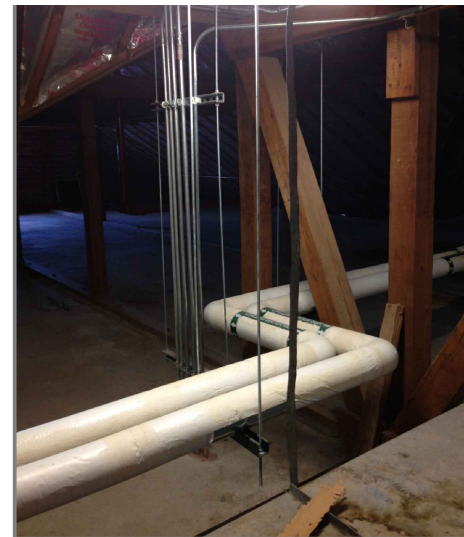


GENERAL NOTES

- 1. Measurements/locations are approximate and shall be verified by the Contractor. VA will not be held responsible for any error or variation in any measurements or other data listed.
- 2. Ductwork and equipment has been in service for infectious isolation area. Appropriate PPE and safety procedures required.
- 3. ICRA (infection control risk assessment) required prior to starting any work. Follow all ICRA requirements including (but not limited to) providing negative air for work area and bagging debris prior to removal from work area.
- 4. COR approval must be granted prior to taking any equipment out of service. Outages will be scheduled to minimize impact on the hospital.



403  
ATTIC



B EXISTING RACEWAYS UP FROM 13BE  
NTS

NEW PANEL (3 PH)  
①

SHEET NOTES

- ① PROVIDE/INSTALL NEW 30 SPACE, 208 / 120 3PH, 100 AMP PANEL AT THIS LOCATION. FEED FROM PANEL 13BE BELOW. PROVIDE/INSTALL NEW 100 AMP, 3 PH BREAKER IN 13 BE FOR THIS PANEL. FULLY POPULATE THIS PANEL WITH BREAKERS. REFER TO SOW FOR FURTHER SPECIFICATIONS ON THIS PANEL.
- ② NEW DISCONNECT AND VSD PROVIDED FOR NEW EF FOR 247-01. ELECTRICAL TO BE SOURCED FROM NEW PANEL INSTALLED AS PART OF THIS WORK.
- ③ EXISTING EF SERVING PALLIATIVE CARE. CURRENT ELECTRICAL FROM 31,33,35 OF PANEL 13BE ON THIRD FLOOR BELOW. PULL BACK EXISTING WIRING AND CONNECT TO NEW PANEL. CHANGEOVER MUST BE ACCOMPLISHED IN A SINGLE 1 HOUR PERIOD (SCHEDULED BY COR).
- ④ EXISTING AHU SERVING PALLIATIVE CARE. CURRENT ELECTRICAL FROM 37,39,41 OF PANEL 13BE ON THIRD FLOOR BELOW. PULL BACK EXISTING WIRING AND CONNECT TO NEW PANEL. CHANGEOVER MUST BE ACCOMPLISHED IN A SINGLE 1 HOUR PERIOD (SCHEDULED BY COR).

A NEW ELECTRICAL WORK, ATTIC 403  
NTS

		Approved: Medical Center Facility Manager	Project Title UPGRADE EXH SYS 247-01		Drawing Title NEW ELECTRICAL WORK, 403		Project Number 564-16-TBD		 Department of Veterans Affairs
							Building Number ONE (01)		
		Approved: Engineering Service Chief	Measures one inch or not to scale!		Location VAMC - Fayetteville, AR		Drawing Number E-1		
Notes and/or Revisions:		Date			Checked ENG		Date 21 JUN 16		

CUSTOM VA FORM 08-6231B, MAR 2008