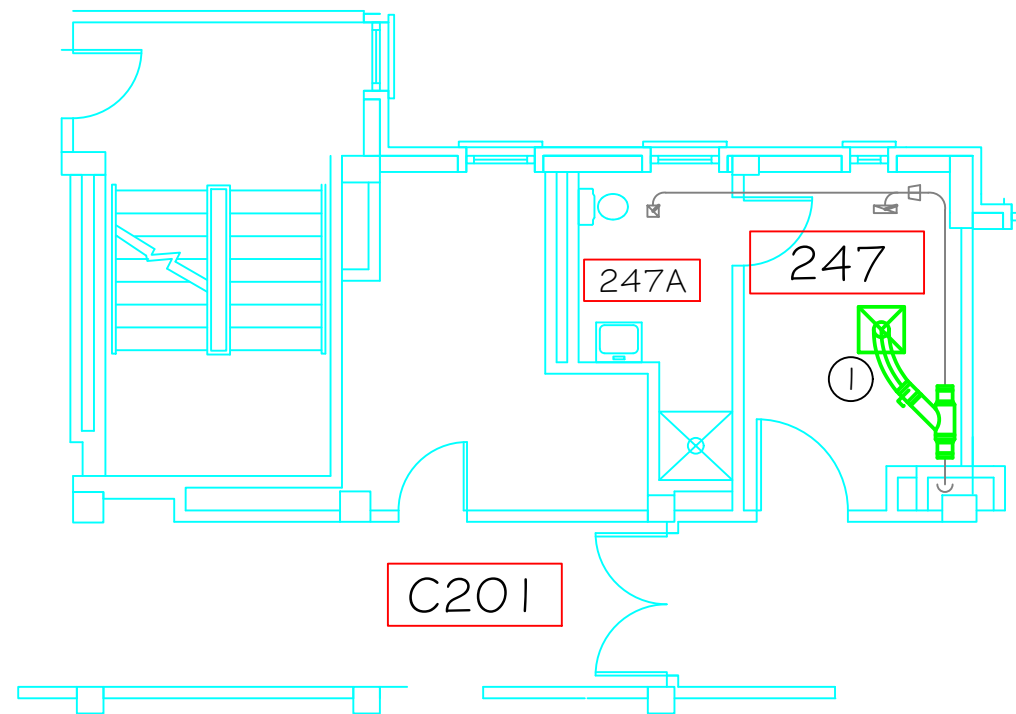


GENERAL NOTES

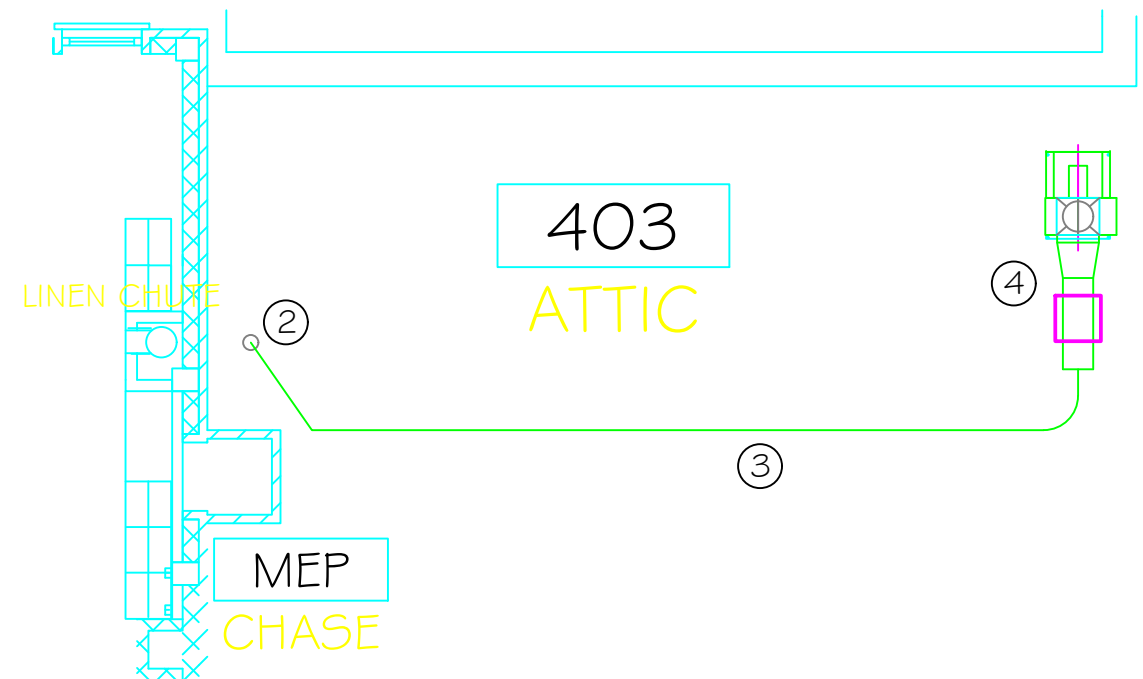
- 1. Measurements/locations are approximate and shall be verified by the Contractor. VA will not be held responsible for any error or variation in any measurements or other data listed.
- 2. Ductwork and equipment has been in service for infectious isolation area. Appropriate PPE and safety procedures required.
- 3. ICRA (infection control risk assessment) required prior to starting any work. Follow all ICRA requirements including (but not limited to) providing negative air for work area and bagging debris prior to removal from work area.





A NEW WORK, 247-01
NTS

SHEET NOTES

- ① REPLACE EXISTING 6" DIA BRANCH TO 24x24 EXHAUST GRILLE WITH 8" DIA DUCT (MAX 4' FLEX DUCT). INSTALL NEW 8X8X8 WYE AND BALANCE DAMPER IN BRANCH. INSTALL NEW 24X24 EXHAUST GRILLE FOR LAY-IN CEILING (MATCH EXISTING COLOR).
- ② EXISTING ATTIC FLOOR PENETRATION TO REMAIN. CONNECT NEW 12" DIA MED PRESSURE EXHAUST DUCT TO EXISTING 8" DUCT WITH NEW MEDIUM PRESSURE TRANSITION.
- ③ INSTALL NEW 12" DIA MEDIUM PRESSURE DUCT/ ROUTE ALONG SAME PATH AS EXISTING (MAINTAIN OVERHEAD ROUTING). ALL 90 ELS TO MEET MINIMUM 1.5X DIA RADIUS. INSTALL IN ACCORDANCE WITH SMACNA GUIDELINES.
- ④ INSTALL NEW EXHAUST FAN AND FILTER HOUSING TO MATCH EXISTING ROOF PENETRATION/DISCHARGE DUCT. REFER TO M-2, M-3 FOR ADDITIONAL DETAIL AND E-1 FOR ELECTRICAL CONNECTION GUIDANCE.



B NEW WORK, ATTIC 403
NTS

		Approved: Medical Center Facility Manager	Project Title UPGRADE EXH SYS 247-01	Drawing Title NEW DUCTWORK, EXHAUST FAN	Project Number 564-16-TBD		Engineering Service  Department of Veterans Affairs	
					Building Number ONE (01)			
					Drawing Number M-1			
		Approved: Engineering Service Chief	Measures one inch or not to scale! 	Scale: NTS	Location VAMC - Fayetteville, AR		Sheet 2 of 5	
Notes and/or Revisions:					Checked ENG	Drawn ENG		Date 21 JUN 16
Date								

CUSTOM VA FORM 08-6231B MAR 2008