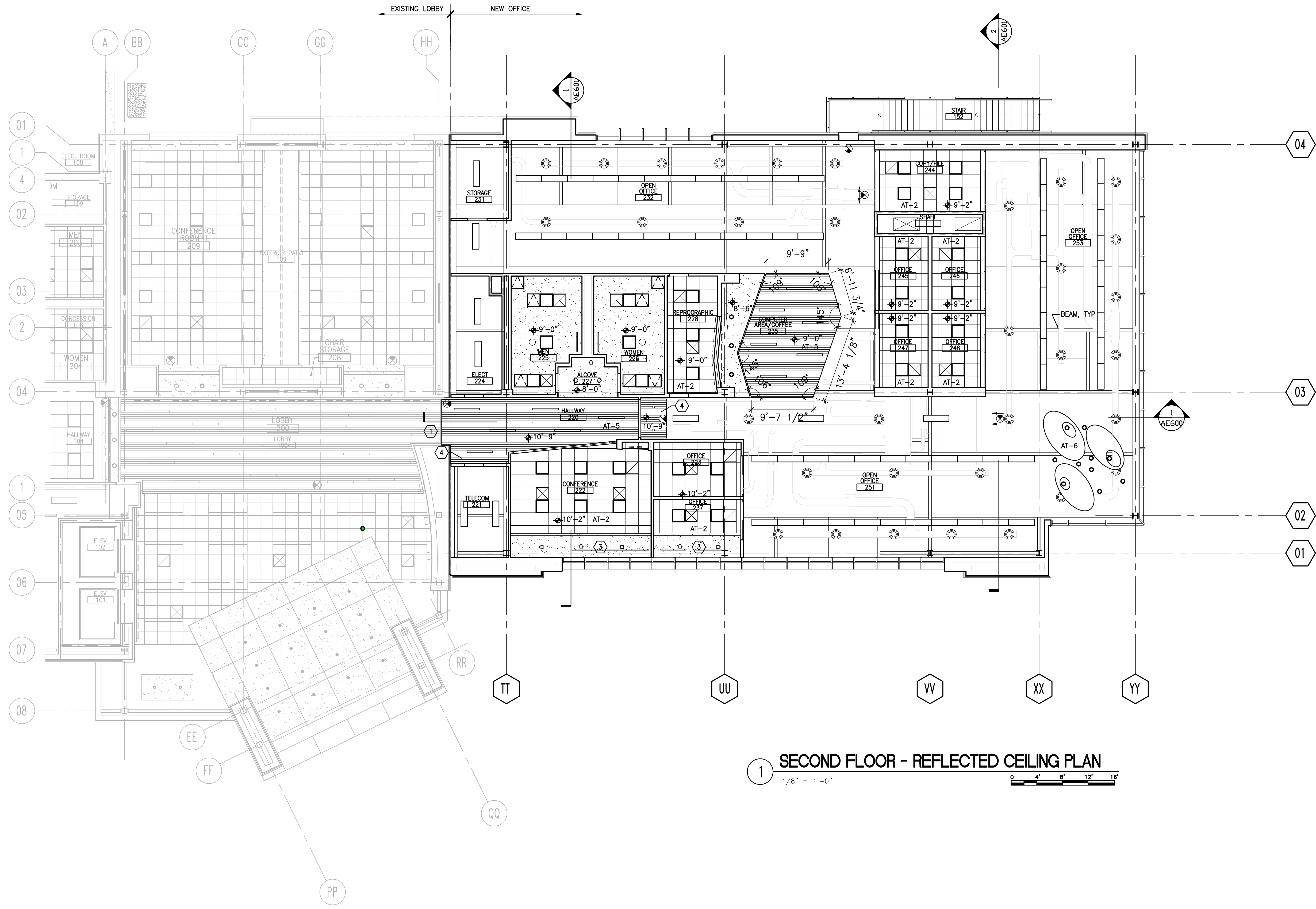


three eighths inch = one foot
one eighth inch = one foot
one quarter inch = one foot
one half inch = one foot
three quarters inch = one foot
one inch = one foot
one and one half inches = one foot
two inches = one foot
three inches = one foot



1 SECOND FLOOR - REFLECTED CEILING PLAN
1/8" = 1'-0"

GENERAL NOTES:

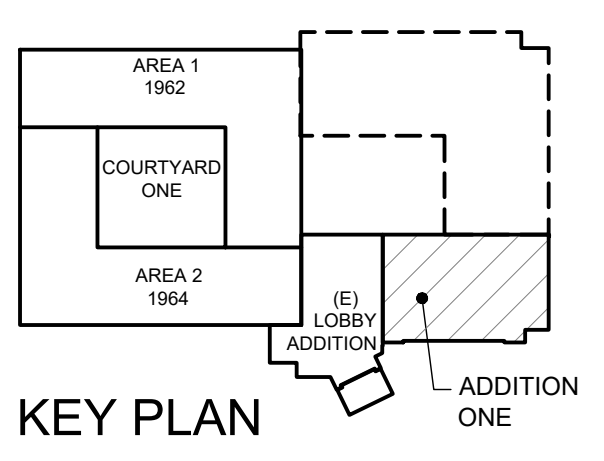
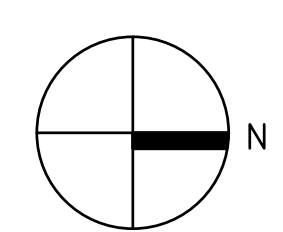
1. SEE AE650 SERIES FOR TYPICAL DETAIL AT PERFORATED CORRUGATED ACOUSTICAL METAL CEILING PANELS. PANELS SHALL BE INSTALLED BETWEEN STRUCTURAL FLOOR & ROOF FRAMING MEMBERS. NOT REQUIRED AT STORAGE, ELECTRICAL RM AND TELECOM RM
2. SEE MECHANICAL DRAWINGS FOR MECHANICAL DUCTWORK.
3. ALL EXPOSED TO VIEW SURFACES SHALL BE PAINTED IN "OPEN CEILING" AREAS.

KEYED NOTES:

- 1 EXISTING CEILING SYSTEM
- 2 CEILING EXPANSION JOINT
- 3 SEE 1&3/AE601 FOR CEILING PROFILE.
- 4 WD CEILING CURVE TO MATCH LOBBY.

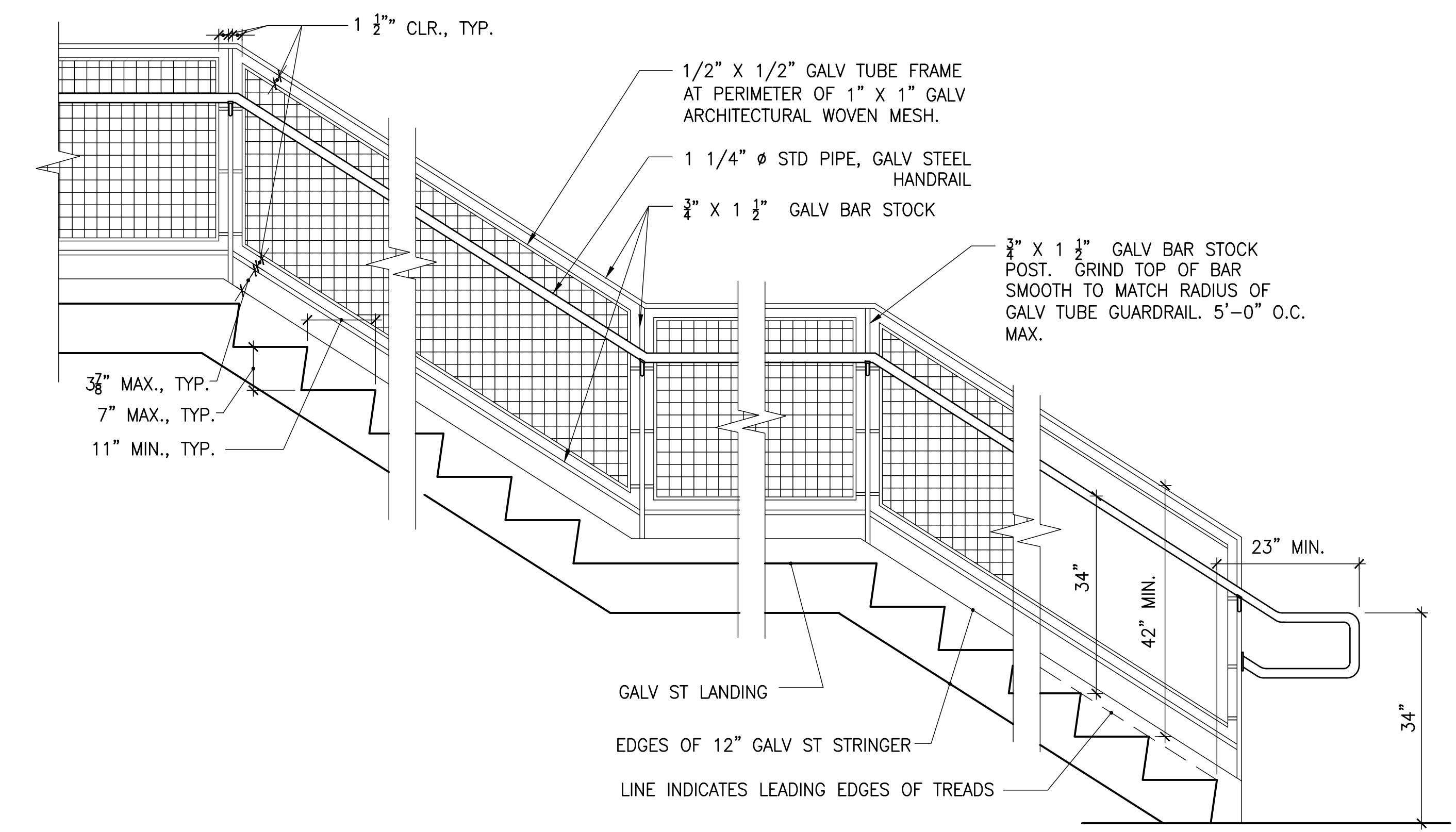
LEGEND:

- SUSPENDED ACOUSTICAL CEILING
- GYPSUM BD CEILING OR SOFFIT
- WOOD CEILING
- 2'x2' ACCESS DOOR
- ACOUSTICAL WHISPER CLOUD
- 2'x2' FLUORESCENT RECESSED CEILING LIGHT FIXTURE
- 1'-0" x 4'-0" PENDANT LIGHT FIXTURE
- 4" x 4'-0" RECESSED LED LIGHT FIXTURE
- UNDER UPPER MILLWORK, RECESSED TASK LIGHT FIXTURE
- RECESSED 4" DIA DOWNLIGHT
- RECESSED CANNED LIGHT
- EXIT LIGHT
- HEIGHT OF CEILING AFF

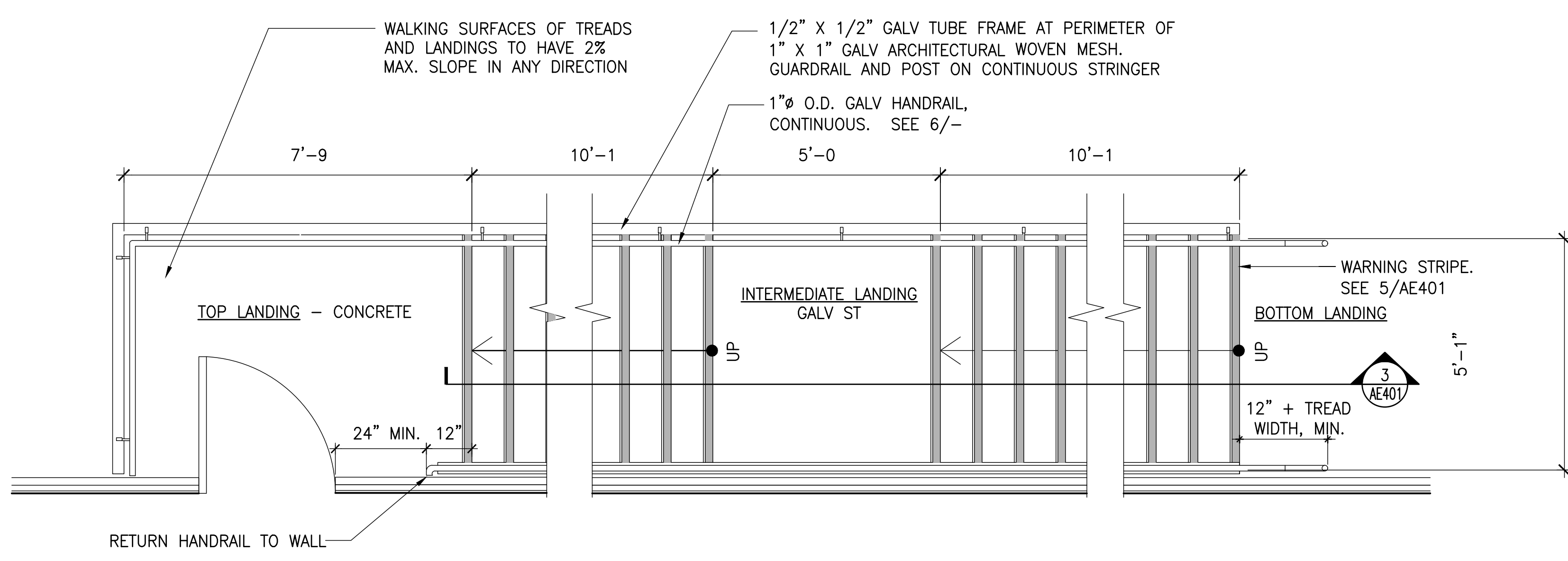


Revisions:		Date:		CONSULTANTS:		Stamp and Signature		ARCHITECT/ENGINEERS:		Drawing Title		Project Title		Project Number		Office of Construction and Facilities Management	
				BRYAN BENNO BRAUER, P.E. CONSULTING ENGINEER PO BOX 2566, TRUCKEE, CA 96160 (530)582-8883 BRYAN@BBBRAUER.COM		ARSENIO ORTEGA, P.E. CONSULTING ENGINEER 5 Third Street, Suite 716 San Francisco, CA 94103 (415) 546-0490 tel -0491 fax		ENGINEERS ARCHITECTS 6700 KOLL CENTER PARKWAY SUITE 125 PLEASANTON, CALIFORNIA 94566 TEL 925.223.8217 www.thekpagroup.com ©THE KPA GROUP 2017 KPA Project No. 582.00		SECOND FLOOR REFLECTED CEILING PLAN		ESTABLISH SUNNYVALE R AND D CAMPUS		640-397		Office of Construction and Facilities Management	
										Approved Project Director		Location		Building Number		Drawing Number	
										- VAPAHCS PLANNING AND ENGINEERING		1080 INNOVATION WAY, SUNNYVALE, CA 94085		1002		AE302	
												Date		Checked		Drawn	
												4/30/2017		PWP		KPA TEAM	
																Dwg. of	

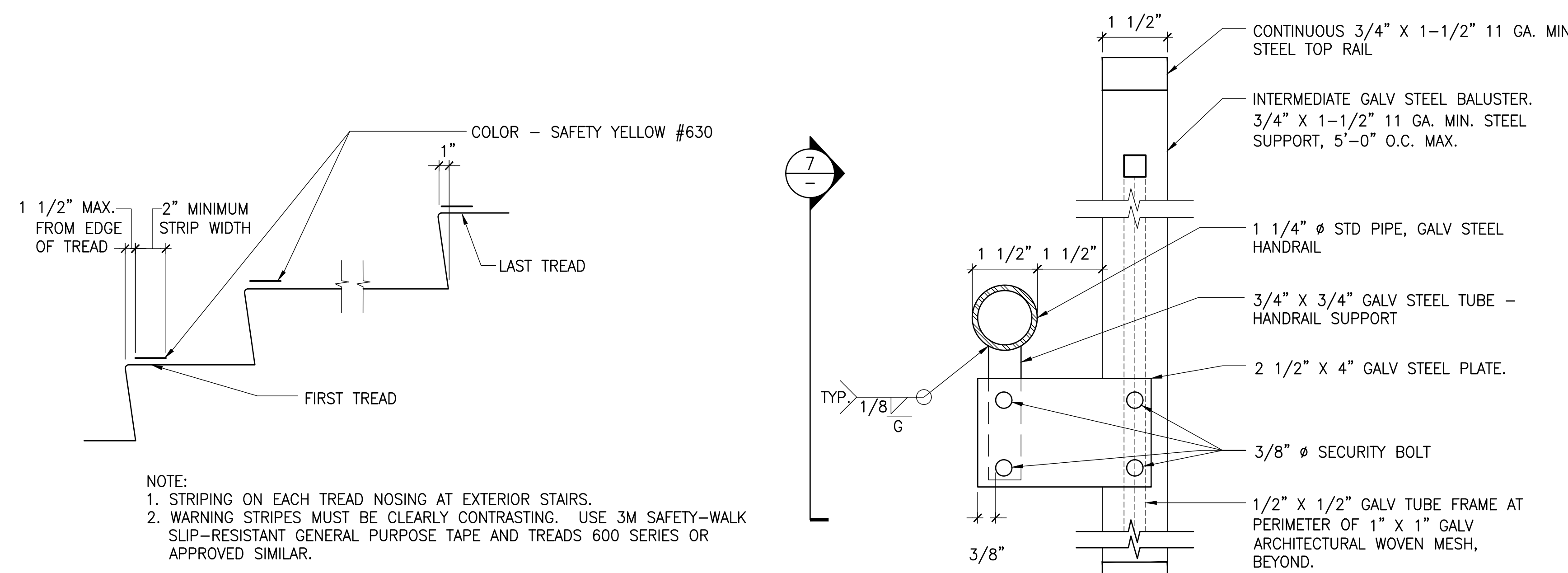
three inches = one foot
one and one half inches = one foot
one inch = one foot
three quarters inch = one foot
one half inch = one foot
three eighths inch = one foot
one quarter inch = one foot
one eighth inch = one foot



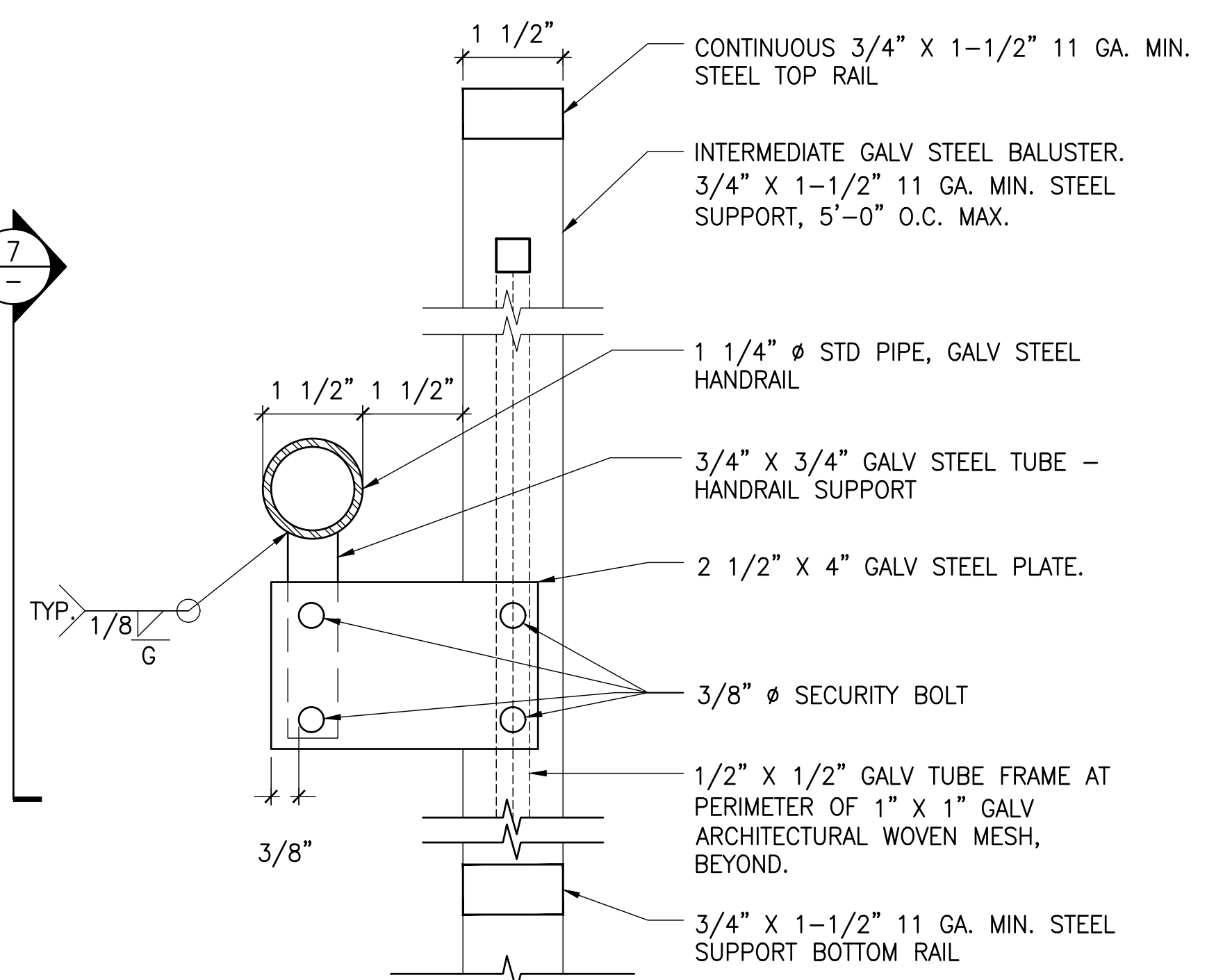
3 GUARDRAIL AND HANDRAIL ELEVATION
NO SCALE



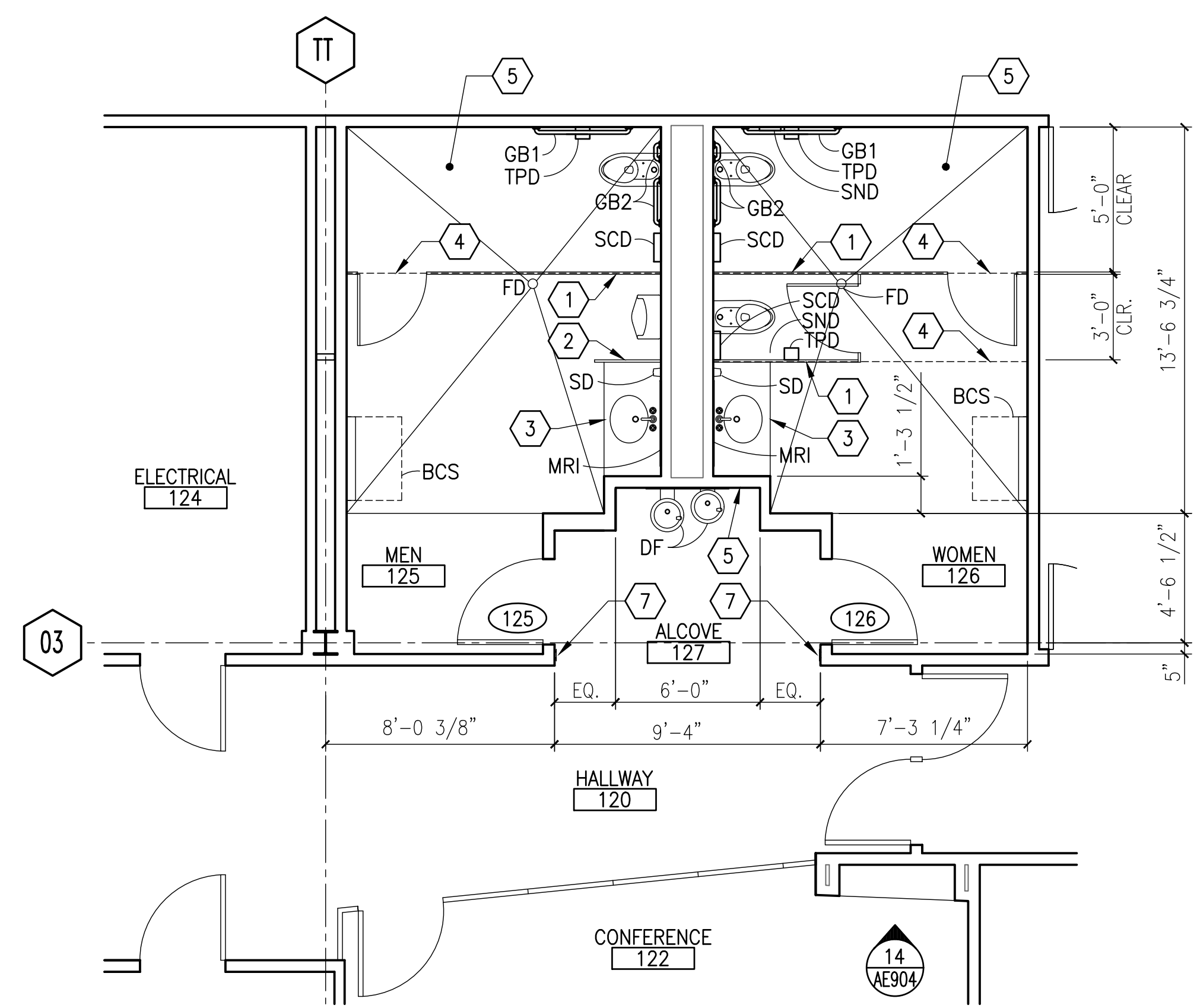
4 GUARDRAIL AND HANDRAIL PLAN
NO SCALE



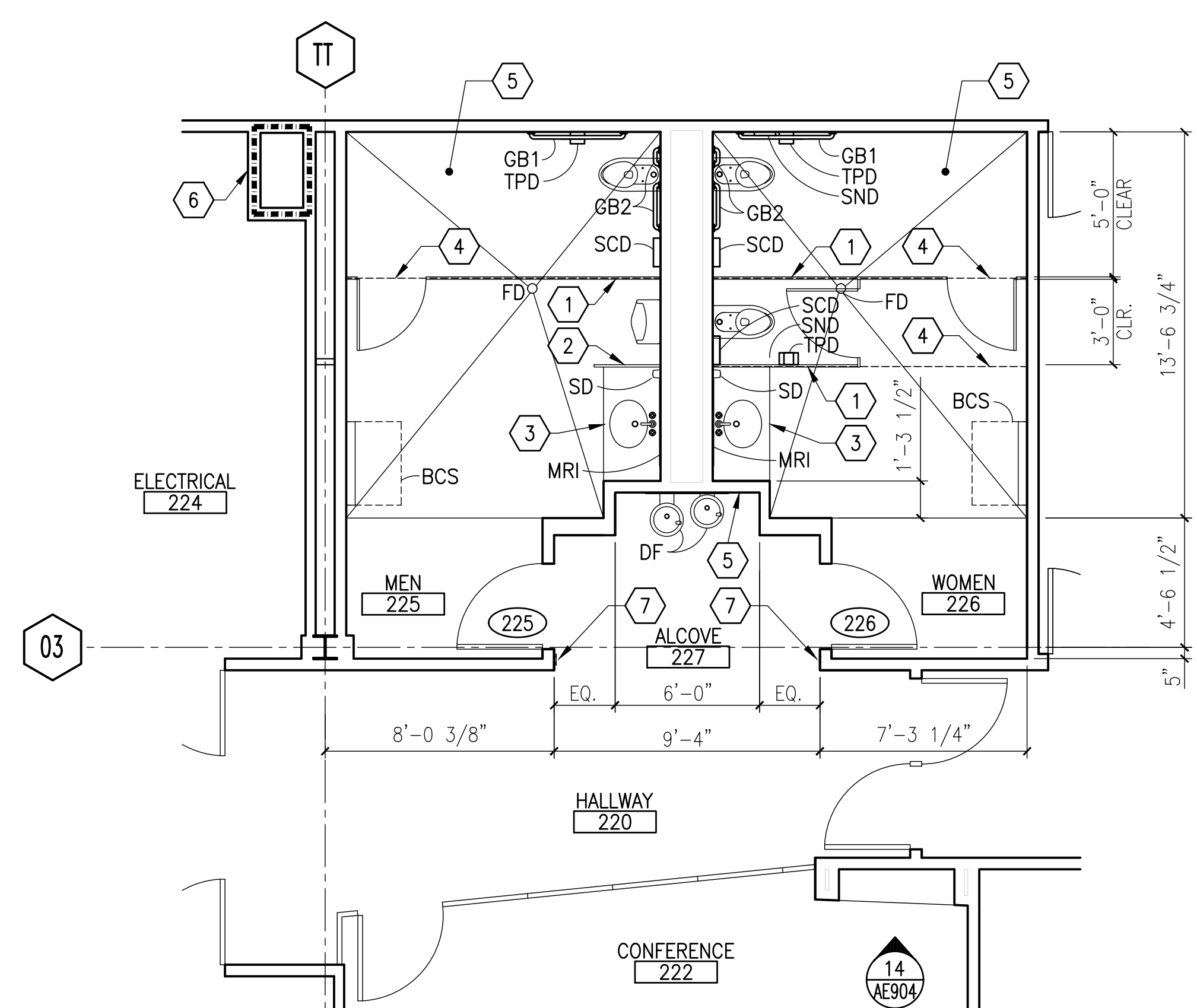
5 WARNING STRIP • STAIR
NO SCALE



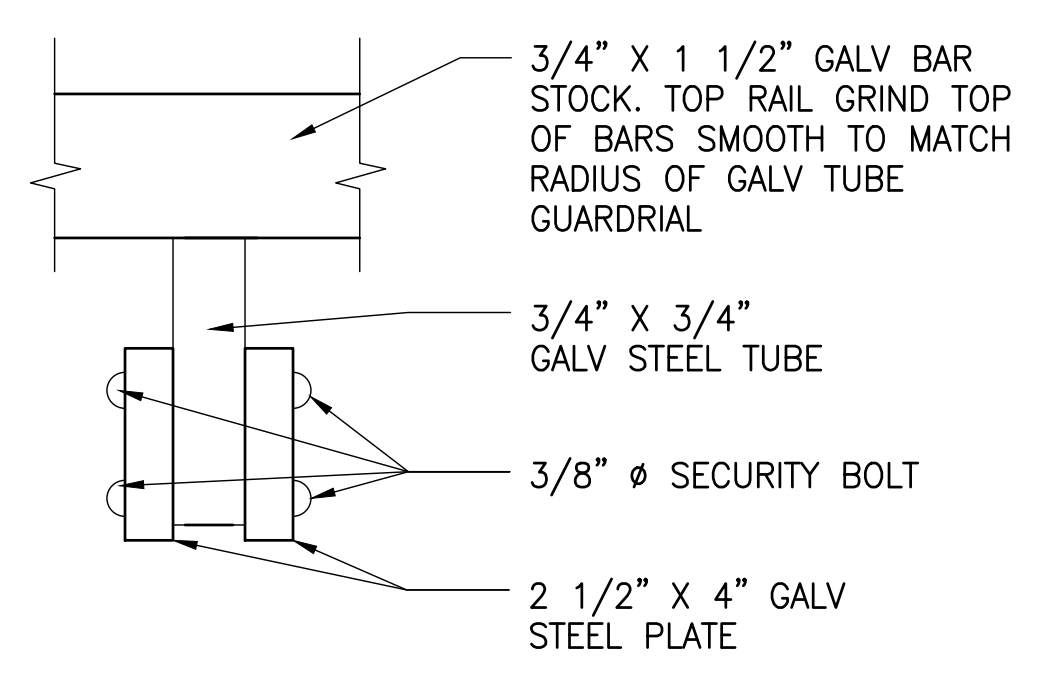
6 HANDRAIL DETAIL
6\"/>



1 ENLARGED PLAN - 1ST FLOOR TOILETS
1/4\"/>



2 ENLARGED PLAN - 2ND FLOOR TOILETS
1/4\"/>



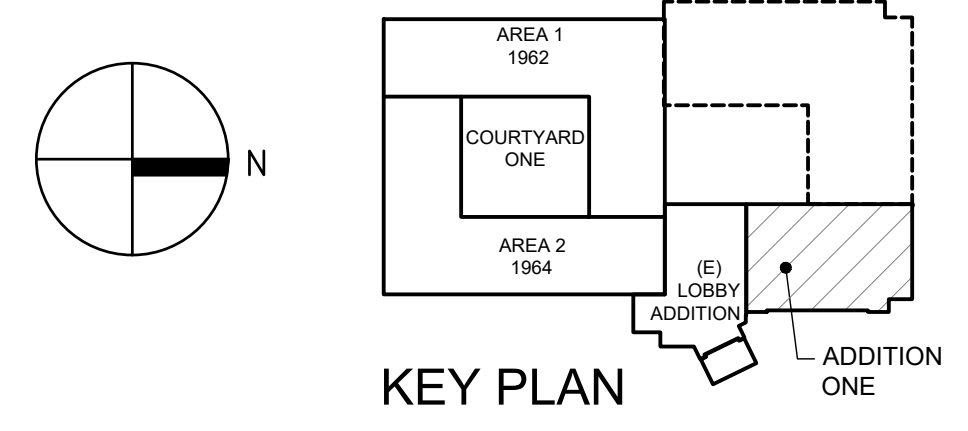
7 BRACKET ELEVATION
6\"/>

- GENERAL NOTES:**
- SEE PLANS FOR LOCATIONS OF CONTRACTOR INSTALLED, VA FURNISHED TOILET ACCESSORIES.
 - SEE SHEET AE909 FOR MOUNTING HEIGHTS OF TOILET ACCESSORIES.

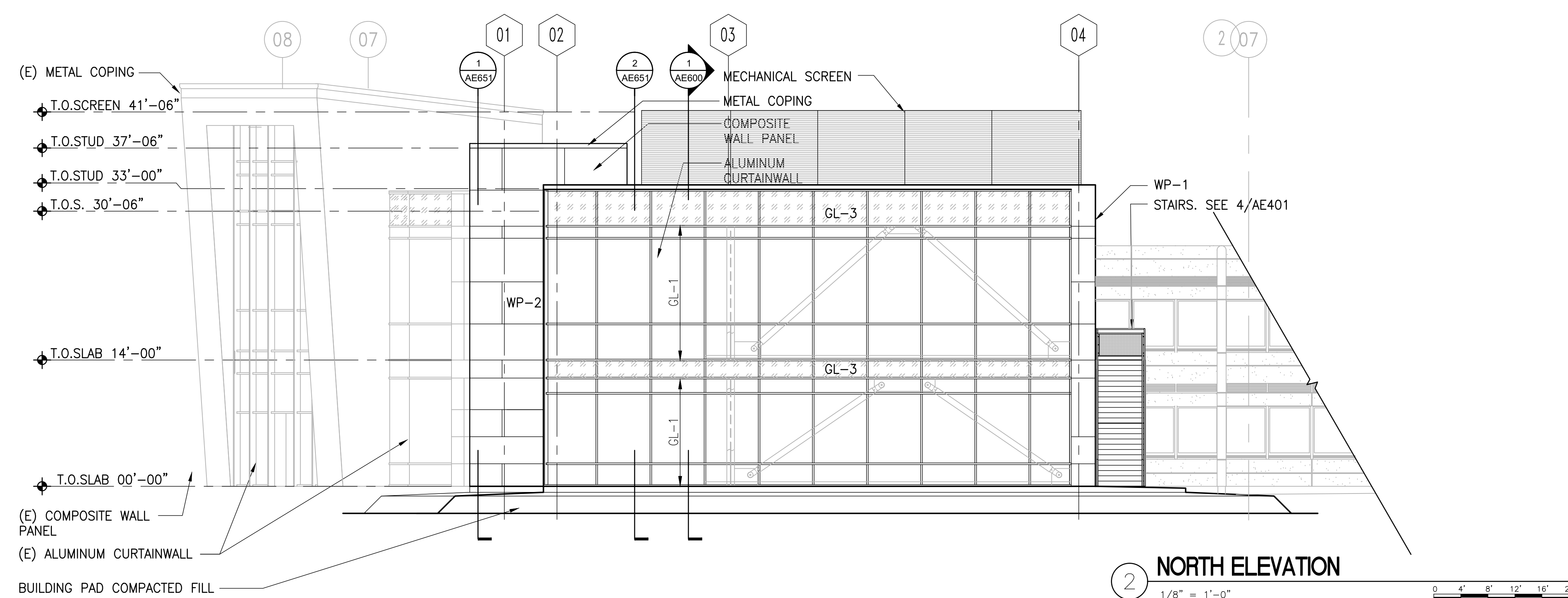
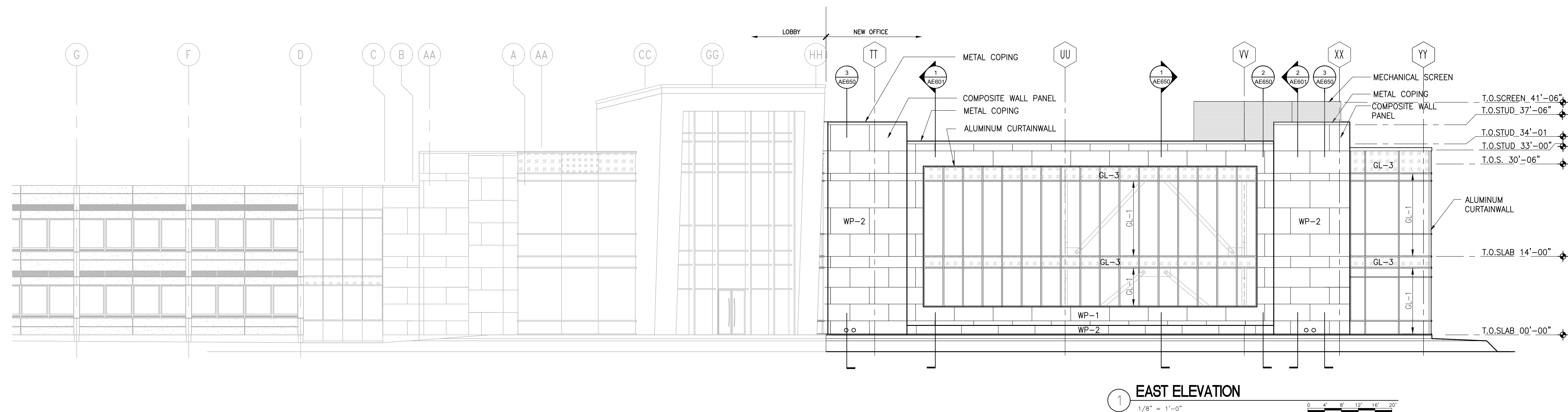
- KEYED NOTES:**
- 1 TOILET PARTITION
 - 2 URINAL SCREEN
 - 3 CULTURED STONE COUNTERTOP WITH INTEGRAL SINK, SEE DETAIL 5/AE909.
 - 4 STEEL SUPPORT FOR OVERHEAD TOILET PARTITION, SEE 6/AE903.
 - 5 ALL WALLS TO RECEIVE PORCELAIN TILE, FULL HEIGHT
 - 6 RATED MECHANICAL SHAFT, ONE HOUR
 - 7 ADA DOOR ACTUATOR

ABBREVIATIONS:

SD	SOAP DISPENSER(S)	VC
SCD	SEAT COVER DISPENSER	VC
TPD	TOILET PAPER DISPENSER	VC
GB1	GRAB BAR 42"	CC
GB2	GRAB BAR 36"-SPLIT	CC
MRI	MIRROR - 36" x 48"	CC
DF	DRINKING FOUNTAIN	CC
BCS	BABY CHANGING STATION	VC
BABY	CHANGE SEAT	VC
FD	FLOOR DRAIN	CC
SND	SANITARY NAPKIN DISPENSER	VC



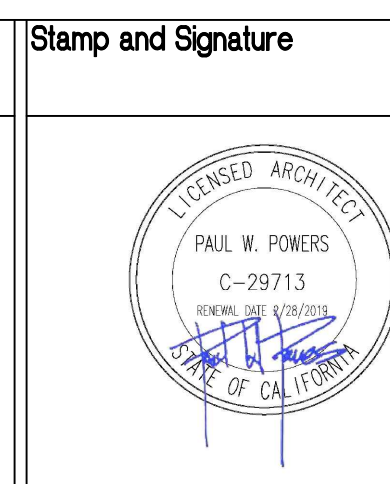
CONSULTANTS:		ARCHITECT/ENGINEERS:		Drawing Title		Project Title		Project Number		Office of Construction and Facilities Management VA PAHCS <small>Veterans Affairs Public Health Care System</small>	
BRYAN BENNO BRAUER, P.E. CONSULTING ENGINEER PO BOX 2566, TRUCKEE, CA 96160 (530)582-8883 BRYAN@BBBRAUER.COM		ARSenio ORTEGA, P.E. CONSULTING ENGINEER 5 Third Street, Suite 716 San Francisco, CA 94103 (415) 546-0490 tel -0491 fax		ENGINEERS ARCHITECTS 6700 KOLL CENTER PARKWAY SUITE 125 PLEASANTON, CALIFORNIA 94566 TEL 925.223.8217 www.thekpagroup.com ©THE KPA GROUP 2017 KPA Project No. 582.00		ESTABLISH SUNNYVALE R AND D CAMPUS		640-397			
Date		Stamp and Signature		Approved Project Director		Location		Building Number			
Revisions		[Signature]		- VAPAHCS PLANNING AND ENGINEERING		1080 INNOVATION WAY, SUNNYVALE, CA 94085		1002			
						Date		Drawing Number			
						4/30/2017		AE401			
						Checked		Drawn		Dwg. of	
						PWP		KPA TEAM			

[illegible]

CONSULTANTS:

BRYAN BENNO BRAUER, P.E.
CONSULTING ENGINEER
PO BOX 2586, TRUCKEE, CA 96160 (530)582-8683
BRYAN@BBBRAUER.COM

ARSENIO ORTEGA, P.E.
CONSULTING ENGINEER
5 Third Street, Suite 716
San Francisco, CA 94103
(415) 546-0490 tel -0491 fax



ARCHITECT/ENGINEERS:



ENGINEERS ARCHITECTS
6700 KOLL CENTER PARKWAY SUITE 125
PLEASANTON, CALIFORNIA 94566
TEL 925.223.8217 www.thekpagroup.com

©THE KPA GROUP 2017
KPA Project No. 582.00

Drawing Title	EXTERIOR ELEVATIONS
---------------	---------------------

Approved: Project Director
-
-
VAPAHCS PLANNING AND ENGINEERING

Project Title	ESTABLISH SUNNYVALE R AND D CAMPUS
---------------	--

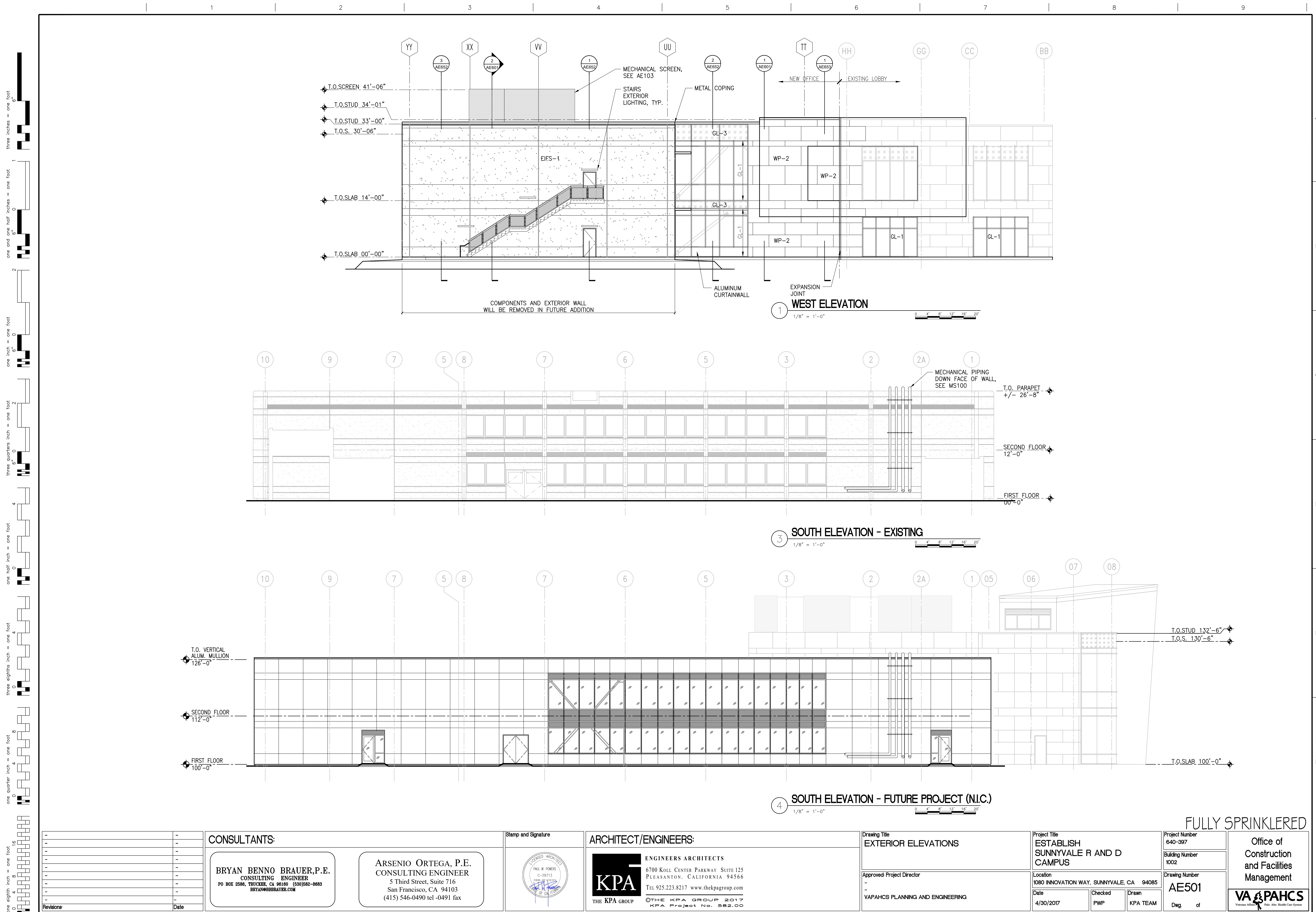
Location		
1080 INNOVATION WAY, SUNNYVALE, CA 94085		
Date	Checked	Drawn
4/30/2017	PWP	KPA TEAM

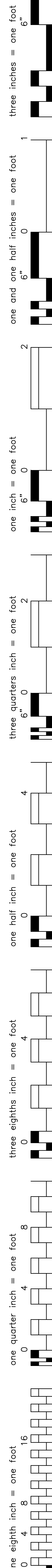
Project Number 640-397
Building Number 1002
Drawing Number AE500

Office of
Construction
and Facilities
Management



FULLY SPRINKLERED





<div> <div>CONSULTANTS:</div> <div> <div> <div>BRYAN BENNO BRAUER,P.E.</div> <div>CONSULTING ENGINEER</div> <div>PO BOX 2586, TRUCKEE, CA 96160 (530)582-8683</div> <div>BRYAN@BBBRAUER.COM</div> </div> <div> <div>ARSENIO ORTEGA, P.E.</div> <div>CONSULTING ENGINEER</div> <div>5 Third Street, Suite 716</div> <div>San Francisco, CA 94103</div> <div>(415) 546-0490 tel -0491 fax</div> </div> </div> <div> <div>Stamp and Signature</div> <div> </div> </div> </div> <div> <div>ARCHITECT/ENGINEERS:</div> <div> <div> <div>ENGINEERS ARCHITECTS</div> <div>6700 KOLL CENTER PARKWAY SUITE 125</div> <div>PLEASANTON, CALIFORNIA 94566</div> <div>TEL 925.223.8217 www.thekpagroup.com</div> <div>©THE KPA GROUP 2017</div> <div>KPA Project No. 582.00</div> </div> <div> <div>Stamp and Signature</div> <div> </div> </div> </div> </div> <div> <div> <div> <div>Drawing Title</div> <div>BUILDING SECTION</div> </div> <div> <div>Approved Project Director</div> <div>-</div> <div>VAPAHS PLANNING AND ENGINEERING</div> </div> </div> <div> <div> <div>Project Title</div> <div>ESTABLISH SUNNYVALE R AND D CAMPUS</div> </div> <div> <div>Location</div> <div>1080 INNOVATION WAY, SUNNYVALE, CA 94085</div> </div> <div> <div>Date</div> <div>4/30/2017</div> </div> <div> <div>Checked</div> <div>FWP</div> </div> <div> <div>Drawn</div> <div>KPA TEAM</div> </div> </div> <div> <div> <div>Project Number</div> <div>640-397</div> </div> <div> <div>Building Number</div> <div>1002</div> </div> <div> <div>Drawing Number</div> <div>AE600</div> </div> <div> <div>Dwg. of</div> <div></div> </div> </div> <div> <div>Office of Construction and Facilities Management</div> <div> </div> </div> </div>
--

