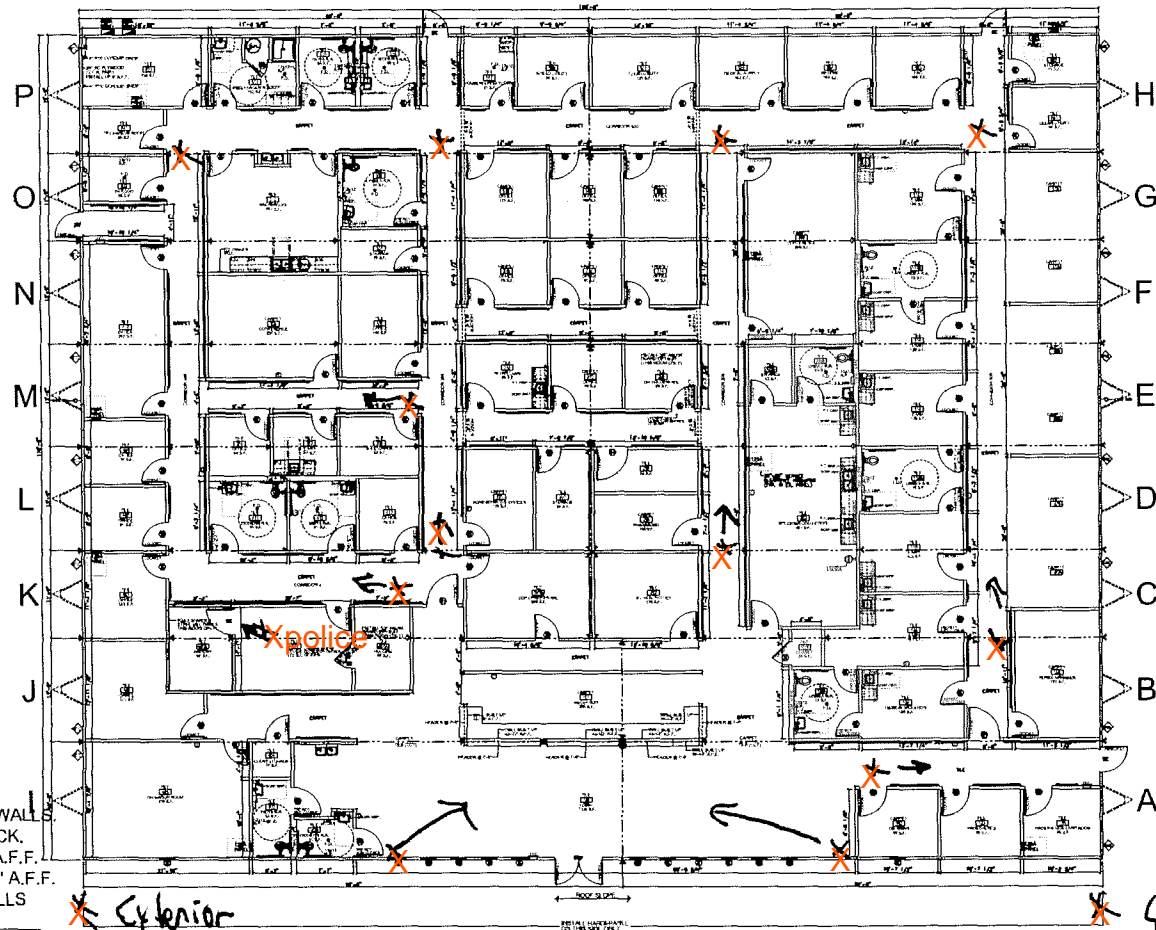


13 interior
2 outside



- NOTE:
1. R-13 UNFACED INSULATION IN ALL INT. WALLS
 2. ALL INTERIOR WALLS ARE DECK-TO-DECK.
 3. P.T. DISPENSER TO BE PLACED UP 44" A.F.F.
 4. SOAP DISPENSER TO BE PLACED UP 44" A.F.F.
 5. ADD 2x6 HORIZONTAL BLOCKING @ WALLS W/ HANDRAILS (UP 32-1/4" TO CENTER).

SCHEDULE / LEGEND

KEY	ITEM DESCRIPTION	SIZE	ROUGH OPENING
BC	36" X 80" STEELRAFT W/ 10x10 PANE	36X80	40 1/2" X 82 1/2"
DBP	24" X 36" X 84" STOREFRONT	72X84	76" X 86"
①	36" X 60" MC HAWK - SOLID CORE	36X60	37 1/4" X 61"
②	48" X 60" MC HAWK - SOLID CORE	48X60	49 1/4" X 61"
③	32" X 60" MC HAWK - SOLID CORE	32X60	33 1/4" X 61"
④	42" X 60" MC HAWK - SOLID CORE	42X60	43 1/4" X 61"
⑤	36" X 24" MC HAWK - SOLID CORE	36X24	37 1/4" X 25 1/2"
⑥	24" X 24" MC HAWK - SOLID CORE	24X24	24 1/2" X 25 1/2" UP 27 1/2"

MINIMUM 3-2x4 STUD SYP No. 2 COLUMNS WITH MIN. 2-18ga X 1-1/4" STRAPS FASTENED WITH MINIMUM 6-EACH No 8 SCREWS EACH END OF EACH STRAP.

THIS DRAWING IS PROPERTY OF AMTEX CORP. AND CANNOT BE DISTRIBUTED WITHOUT MANUFACTURERS CONSENT.

LTR	REVISION	BY	DATE

DRAWN BY: M.L.S.	PROJECT: NORTEX MODULAR SPACE "FT. POLK"	TITLE: FLOOR PLAN	MARK STEELE, P.E. 5139 N. TOM MURRAY AVE. GLENDALE, AZ. 85301 P#: 602.385.2173
DATE: 12/2/10	SCALE: 1/16"=1'-0"	DWG. NO. N112144-1	832 EAST WALNUT GARLAND, TX 75040 P: 972.276.7626 / F: 972.526.0457
SHEET A-2			AMTEX