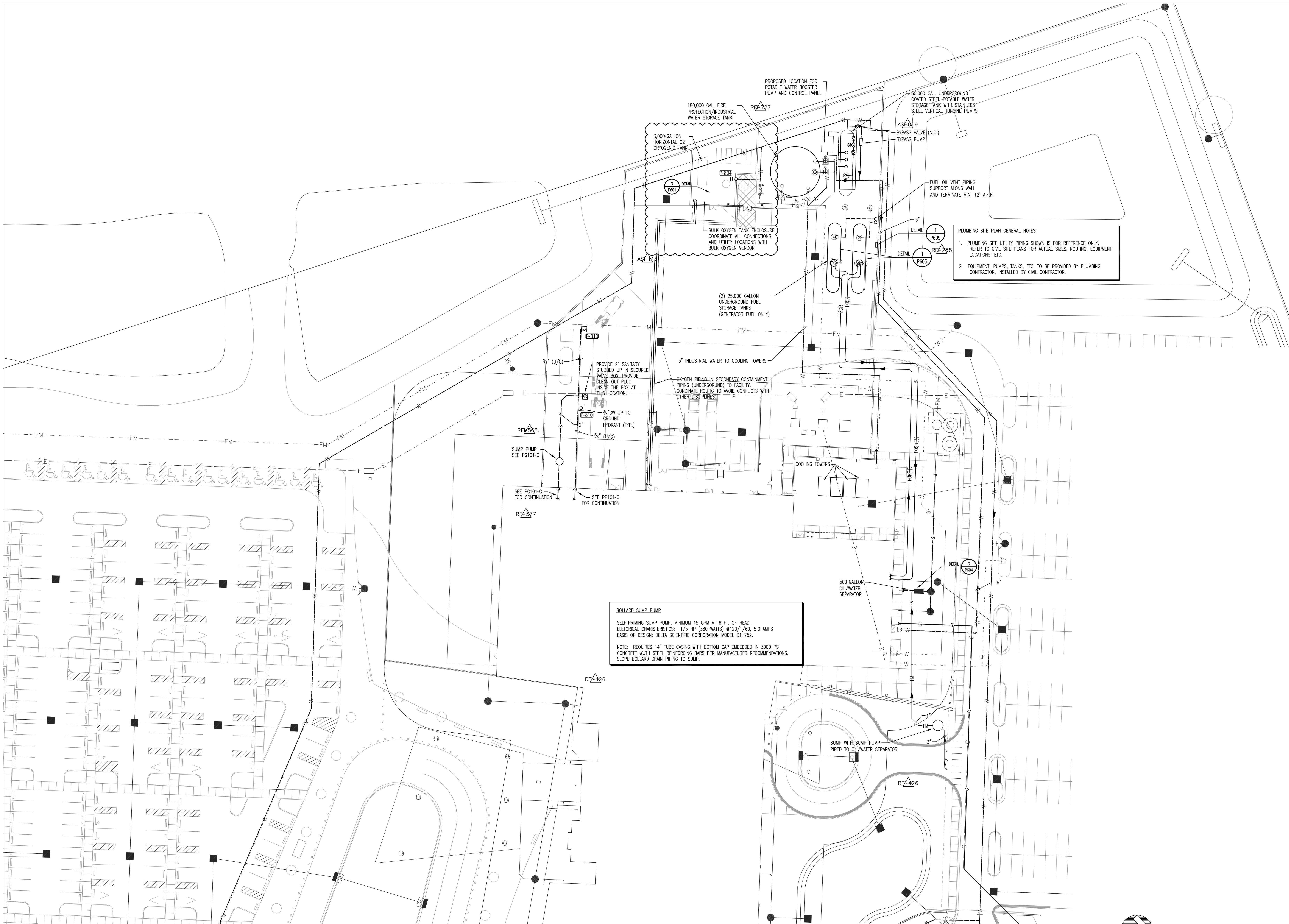


L:\2008-Jobs\108302-VA Ft. Myers Outpatient Clinic\CAD-MEP\Sheets\PS100.dwg 7/19/2011 8:59:50 AM darryl.haeger

three inches = one foot
one and one half inches = one foot
one inch = one foot
three quarters inch = one foot
one half inch = one foot
three eighths inch = one foot
one quarter inch = one foot
one eighth inch = one foot

A
B
C
D
E
F



ENLARGED SITE PLAN - PLUMBING
1\"/>

1	ADDENDUM 05	08-25-2009
	ASI #009	03-24-2010
	ASI #115	03-30-2011
Revisions		Date

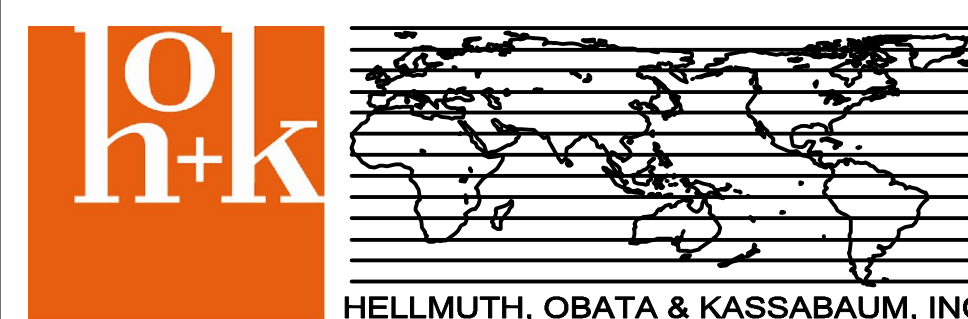
CONSULTANTS



Don C. Bailey, P.E.
Florida License #35067

Seal

ARCHITECT/ ENGINEERS:



Drawing Title:
ENLARGED SITE PLAN
PLUMBING

Approved: Checker

Project Title
Lee County Outpatient Clinic

Client Location
Cape Coral, Florida
Date
06/15/09

Checked:
DCBA

Drawn
DCBE

Project Number
516CA2400

Building Number

Drawing Number:
PS100

Office of
Construction and
Facilities
Management

