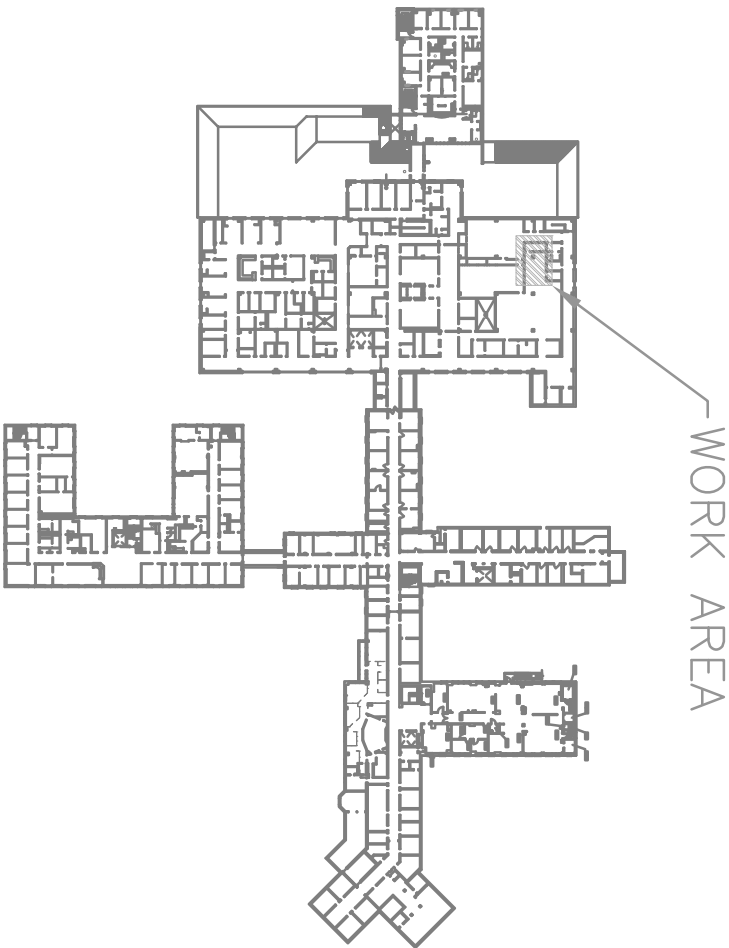


GENERAL NOTES:

THIS PROJECT IS FOR THE DEMOLITION OF ITEMS FOR THE REMOVAL (BY OTHERS) OF AN EXISTING CART WASHER, AND TO PROVIDE THE CONSTRUCTION FOR THE INSTALLATION (BY OTHERS) OF A NEW CART WASHER. VA FACILITY MANAGEMENT SERVICES, CONTRACTING OFFICER (CO) AND CONTRACTING OFFICERS REPRESENTATIVE (COR) SHALL BE IN DAILY CONTACT WITH THE CONTRACTOR. THE HOSPITAL WILL BE IN USE THROUGHOUT THE CONSTRUCTION PERIOD REQUIRING STRICT ADHERENCE TO INFECTION CONTROL AS DEFINED IN THE ICRA, AND IN THE "INFECTION CONTROL POLICY". THE CHEYENNE VAMC SITE ALSO REQUIRES ADHERENCE TO THE CHEYENNE VAMC "CONSTRUCTION CONTROL POLICY" INCLUDED IN THE STATEMENT OF WORK. ADDITIONALLY, ALL NOISY ACTIVITIES SHALL BE LIMITED TO AFTER 4:00 PM, MONDAY THROUGH FRIDAY AND ON WEEKENDS. CONTRACTOR(S) ARE REQUIRED TO VISIT THE SITE PRIOR TO BIDDING AT AN AGREED UPON TIME BETWEEN THE CO, AND THE COR. PRIOR TO THE START OF WORK IT IS THE CONTRACTORS RESPONSIBILITY TO BRING TO THE ATTENTION OF THE COR ANY DEFICIENCIES IN THE EXISTING CONDITIONS, MATERIALS, METHODS, PROCEDURES OR OTHER AREAS OF CONFLICT BETWEEN THE WORK REQUIRED AND THE CONTRACT DOCUMENTS.

1. THE CONTRACTOR SHALL, WITHOUT ADDITIONAL EXPENSE TO THE GOVERNMENT, BE RESPONSIBLE FOR COMPLYING WITH ANY VETERANS ADMINISTRATION, FEDERAL, LOCAL REQUIREMENTS, REGULATIONS & CODES APPLICABLE TO THE PERFORMANCE OF THE WORK.
2. THESE NOTES ARE INTENDED AS A GUIDE TO THE CONSTRUCTION REQUIREMENTS ESTABLISHED FOR THIS PROJECT. NO CONTRACTOR SHOULD ATTEMPT TO DESIGN, BID, OR CONSTRUCT ANY PORTION OF THE WORK HEREIN WITHOUT FULL UNDERSTANDING OF THE DESIGN INTENT, HOSPITAL REQUIREMENTS AND APPLICABLE CODE REQUIREMENTS. THE CONTRACTOR SHOULD OBTAIN CLARIFICATION FROM THE CONTRACTING OFFICER (CO) OR THE CONTRACTING OFFICERS REPRESENTATIVE (COR) IF UNCERTAIN OF THE DESIGN OR INTENT. ALL FEATURES ARE NOT FULLY SHOWN ON THE CONTRACT DOCUMENTS OR IN THE SCOPE OF WORK.
3. THE DESIGN PRESENTED ON THESE DRAWINGS ESTABLISHES THE GENERAL REQUIREMENTS OF THIS PROJECT. IT DOES NOT PRESENT ALL DETAILS REQUIRED FOR CONSTRUCTION.
4. THE DRAWINGS INDICATE LOCATION, DIMENSIONS, AND TYPICAL DETAILS OF CONSTRUCTION. FEATURES OF CONSTRUCTION SHOWN ARE TYPICAL AND APPLY GENERALLY FOR SIMILAR CONDITIONS. THE DRAWINGS DO NOT ILLUSTRATE EVERY CONDITION. IN THE EVENT THAT CERTAIN FEATURES ARE NOT FULLY SHOWN ON THE DRAWINGS OR CALLED OUT IN THE SPECIFICATIONS OR STATEMENT OF WORK, THEIR CONSTRUCTION SHALL BE (A) OF THE CHARACTER AS SHOWN FOR SIMILAR CONDITIONS, AND (B) IN ACCORDANCE WITH CONVENTIONAL PRACTICES OF THE INTERNATIONAL BUILDING CODE AND NFPA, OR (C) AS CLARIFIED BY THE CO AND THE COR PRIOR TO PERFORMING ANY WORK FOR RESOLUTION.
5. UNLESS SHOWN OTHERWISE, DETAILS SHOWN AS "TYPICAL" APPLY WHEREVER APPROPRIATE. SPECIFIC DETAILS TAKE PRECEDENCE OVER "TYPICAL" DETAILS. SPECIFIC NOTES ON DRAWINGS TAKE PRECEDENCE OVER GENERAL NOTES.
6. THE SITE SHALL BE CLEANED DAILY.
7. THE CONTRACTOR SHALL BRING TO THE ATTENTION OF THE COR ALL DISCREPANCIES AS WORK PROGRESSES BEFORE CONTINUING WITH WORK.
8. THE CONTRACTOR SHALL PROVIDE SUBMITTALS ON ALL ELEMENTS OF THE PROJECT AND THEY MUST BE APPROVED BY THE CO OR COR PRIOR TO ORDERING/INSTALLATION, ETC. IF THE CONTRACTOR PERFORMS ANY CONSTRUCTION ACTIVITY KNOWING IT INVOLVES A RECOGNIZED ERROR, INCONSISTENCY OR OMISSION IN THE CONTRACT DOCUMENTS WITHOUT SUCH NOTICE TO THE CO, THE CONTRACTOR SHALL ASSUME APPROPRIATE RESPONSIBILITY FOR SUCH PERFORMANCE AND SHALL BEAR AN APPROPRIATE AMOUNT OF THE ATTRIBUTED COSTS FOR CORRECTION.
9. DO NOT SCALE THE DRAWINGS. LAY OUT WORK FOLLOWING WRITTEN DIMENSIONS. IF WRITTEN DIMENSIONS ARE LACKING, NOTIFY THE COR AT ONCE. IF DISCREPANCIES OCCUR, CONTACT COR FOR RESOLUTION.
10. THE CONTRACTOR SHALL BE DEEMED TO HAVE INSPECTED THE SITE AND VERIFIED ACTUAL GRADES, ELEVATIONS, DIMENSIONS, AND DECLINATIONS AND THE TRUE CONDITIONS UNDER WHICH WORK IS TO BE PERFORMED. ANY DISCREPANCIES SHALL BE CALLED TO THE ATTENTION OF THE COR BEFORE PROCEEDING WITH THE WORK.
11. ALL CONDITIONS AFFECTING WORK PROGRESS AND CONFORMANCE TO PLANS AND SCOPE OF WORK SHALL BE VERIFIED BY THE CONTRACTOR PRIOR TO START OF WORK.
12. ANY SITE AND BUILDING AREAS UNAFFECTED BY THIS WORK SHALL BE PROTECTED FROM ANY DAMAGE CAUSED BY THIS WORK. ANY DAMAGE TO EXISTING STRUCTURES & BUILDING ELEMENTS SHALL BE REPAIRED AND CORRECTED BY THE CONTRACTOR AT NO ADDITIONAL EXPENSE TO THE GOVERNMENT.
13. ANY WASTE/REFUSE CAUSED BY THIS WORK SHALL BE REMOVED FROM THE PREMISES & DISPOSED OF BY THE CONTRACTOR IN A LEGAL MANNER AND CONSISTENT WITH THE GEMS REQUIREMENTS FOR THE PROJECT.
14. ALL HAZARDOUS MATERIALS DISPOSED OF SHALL HAVE WASTE TICKETS BROUGHT TO THE COR.
15. MATERIALS, ASSEMBLIES AND SYSTEMS SHOWN ARE NEW UNLESS OTHERWISE NOTED.
16. ALL NEW MATERIALS & EQUIPMENT SHALL BE INSTALLED PER MANUFACTURER'S RECOMMENDATIONS AND REQUIREMENTS FOR WARRANTIES.
17. THE CONTRACTOR IS REQUIRED TO COORDINATE AND ALLOW ACCESS TO OTHER PROJECTS BEING PERFORMED ON THE VA CAMPUS.
18. ALL WORK WILL BE PERFORMED MONDAY THROUGH FRIDAY, 7 AM TO 4:30 PM EXCEPT AS DEFINED IN THE PROJECT SCOPE. IT IS ANTICIPATED THAT THE MAJORITY OF THE WORK WILL HAVE MINIMAL IMPACT ON THE OPERATION OF THE MEDICAL CENTER. ANY POTENTIAL DISRUPTIONS TO ONGOING VAMC OPERATIONS SHALL BE COORDINATED 17 DAYS IN ADVANCE AND SHALL BE SUBJECT TO REVIEW AND APPROVAL BY THE COR. WORK SHALL BE SCHEDULED TO ALLOW FOR CONTINUOUS OPERATIONS OF ALL FACILITIES TO THE GREATEST EXTENT POSSIBLE.
19. CONTRACTOR PERSONNEL SHALL PRESENT A NEAT APPEARANCE & BE EASILY RECOGNIZED AS CONTRACTOR EMPLOYEES. CONTRACTORS ARE REQUIRED TO OBTAIN & WEAR CHETENNE VAMC ID BADGES AT ALL TIMES WHEN ON VA PROPERTY. CONTRACTOR PERSONNEL WORKING ON SITE AT VA FACILITY SHALL CHECK IN & OUT DAILY WITH THE POLICE DISPATCH LOCATED IN THE MAIN HOSPITAL BUILDING TO RECEIVE SITE BADGES.
20. WORK CONDUCTED WITHIN STERILIZATION AREA MUST BE PERFORMED IN ACCORDANCE WITH INFECTION CONTAINMENT RISK ASSESSMENT DOCUMENTS

SHEET INDEX	
Sheet Number	Sheet Name
GI001	COVER SHEET AND SHEET INDEX
CE101	FLOOR PLAN
CD101	WALL DETAILS
CS101	STANDARD DETAILS



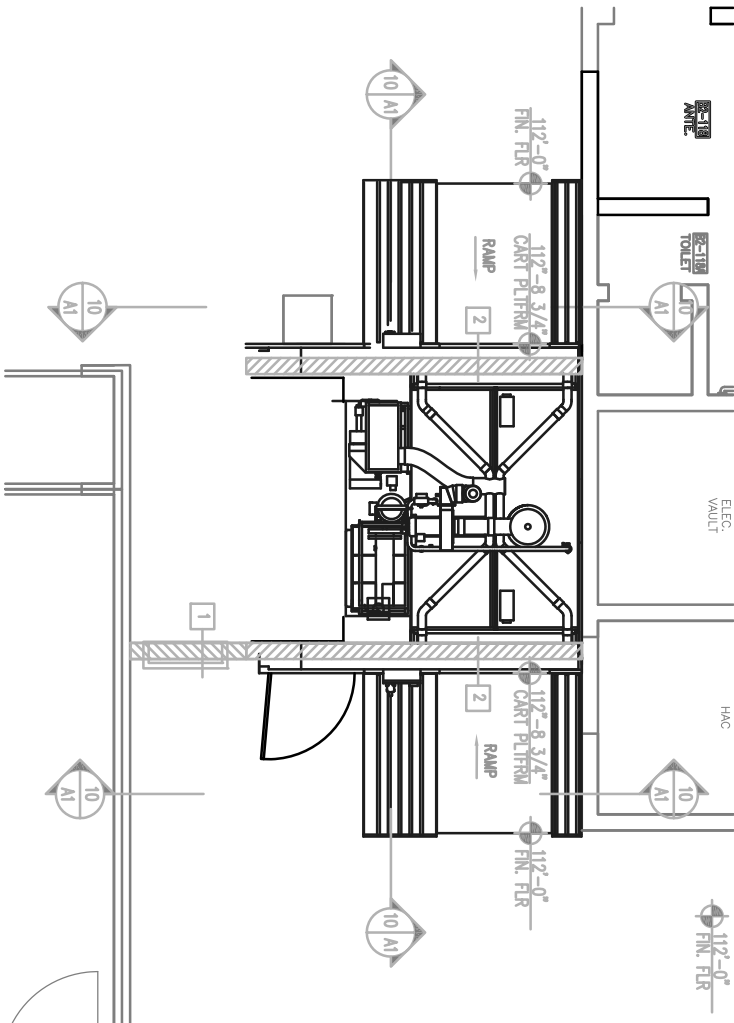
LOCATION MAP COWBOY BUILDING 2ND FLOOR:
STERILIZATION

[illegible]

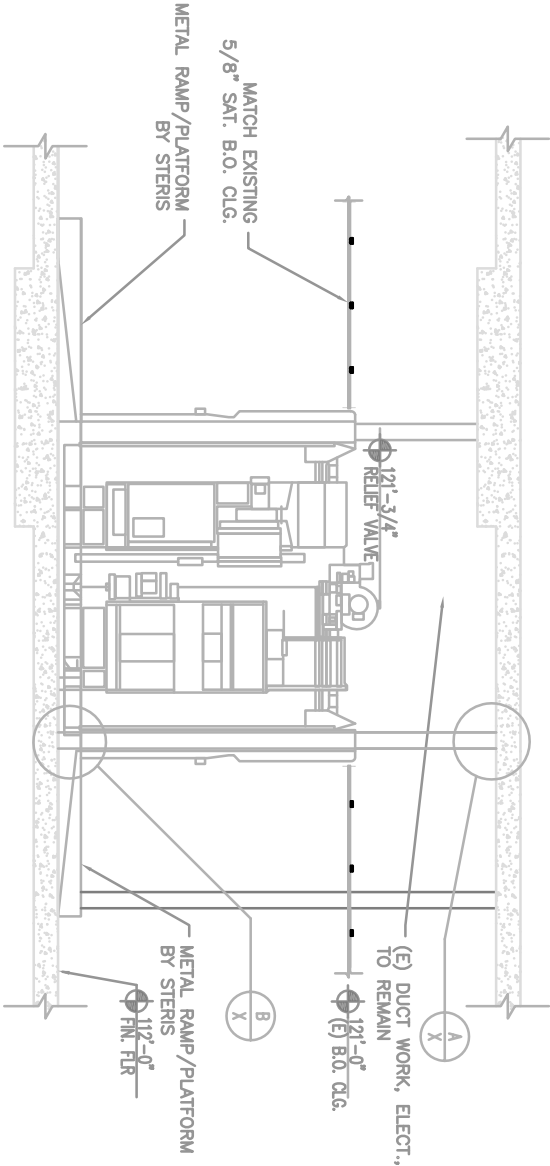


VA FORM 08-6231, OCT 1978

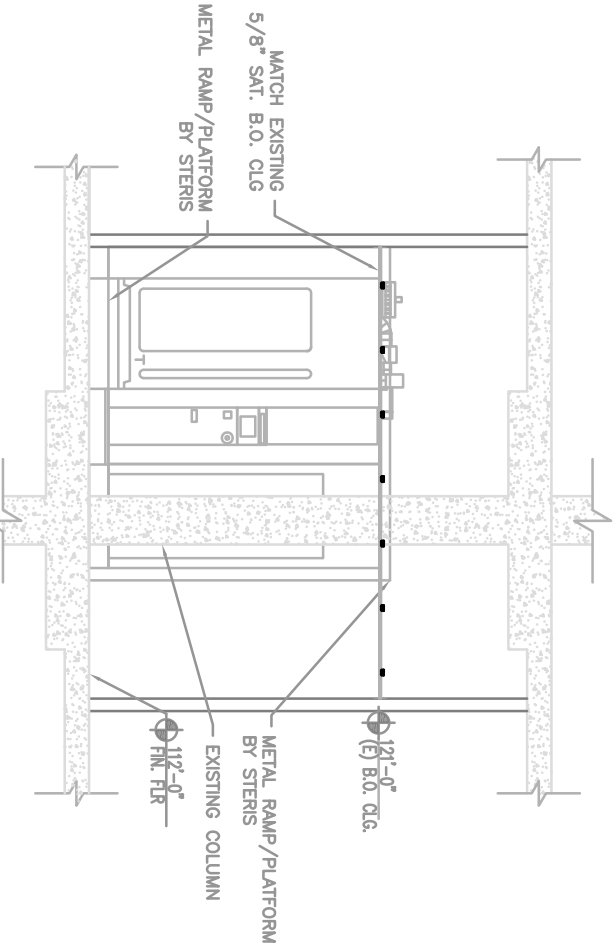
PLAN VIEW



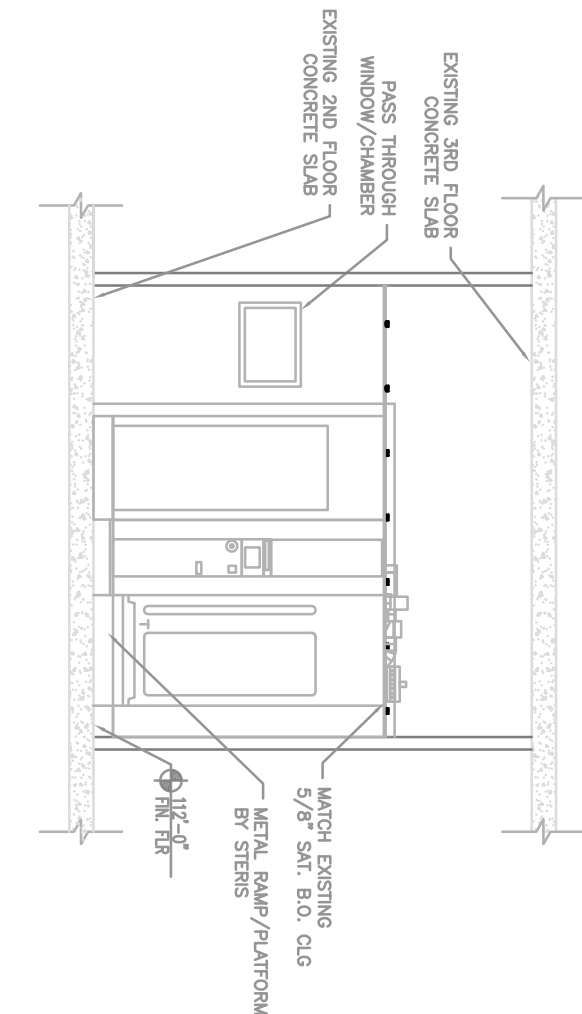
D PLAN VIEW A
A2 1/4" = 1'-0"



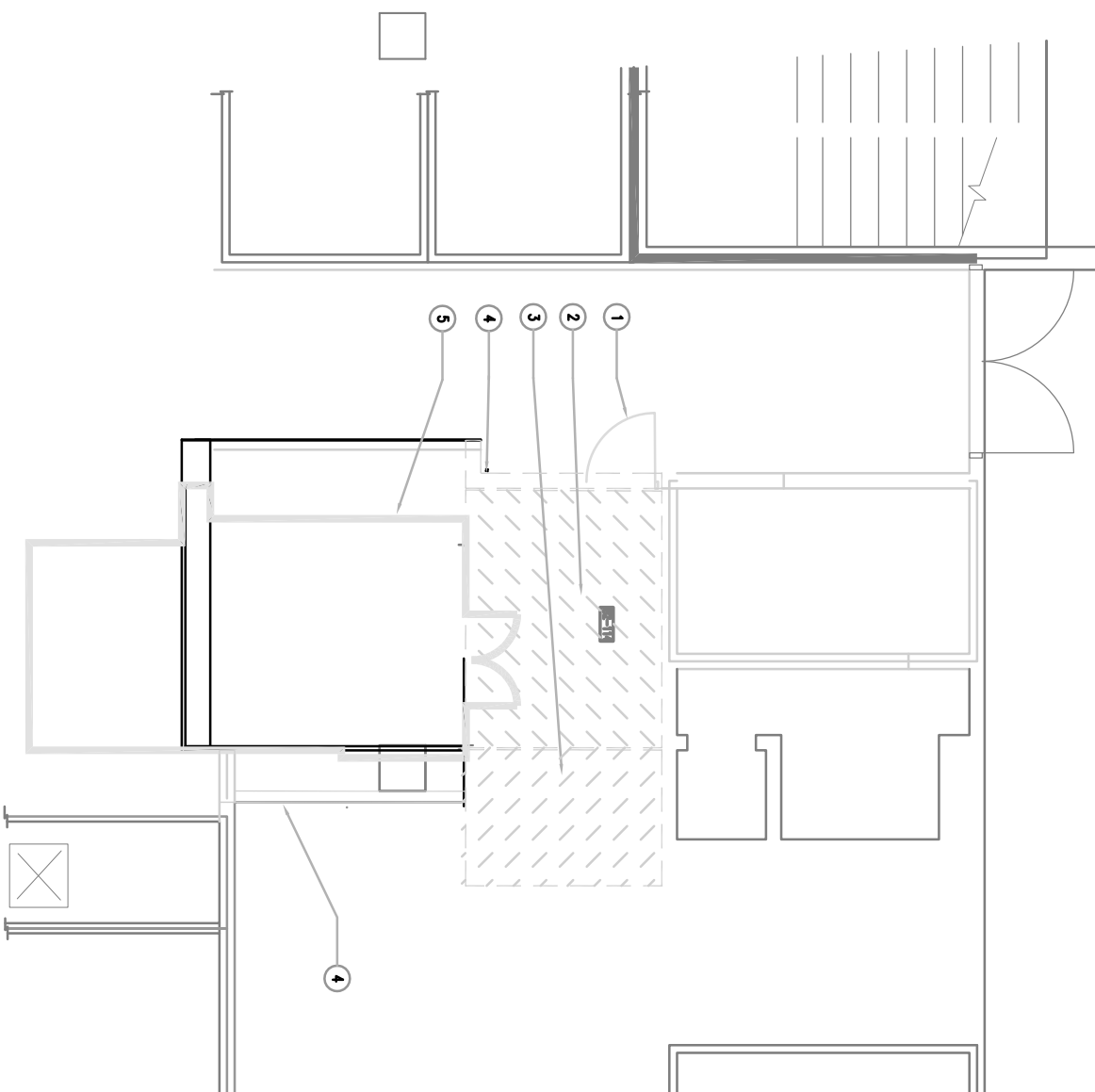
D PLAN VIEW B
A2 1/4" = 1'-0"



D PLAN VIEW C
A2 1/8" = 1'-0"

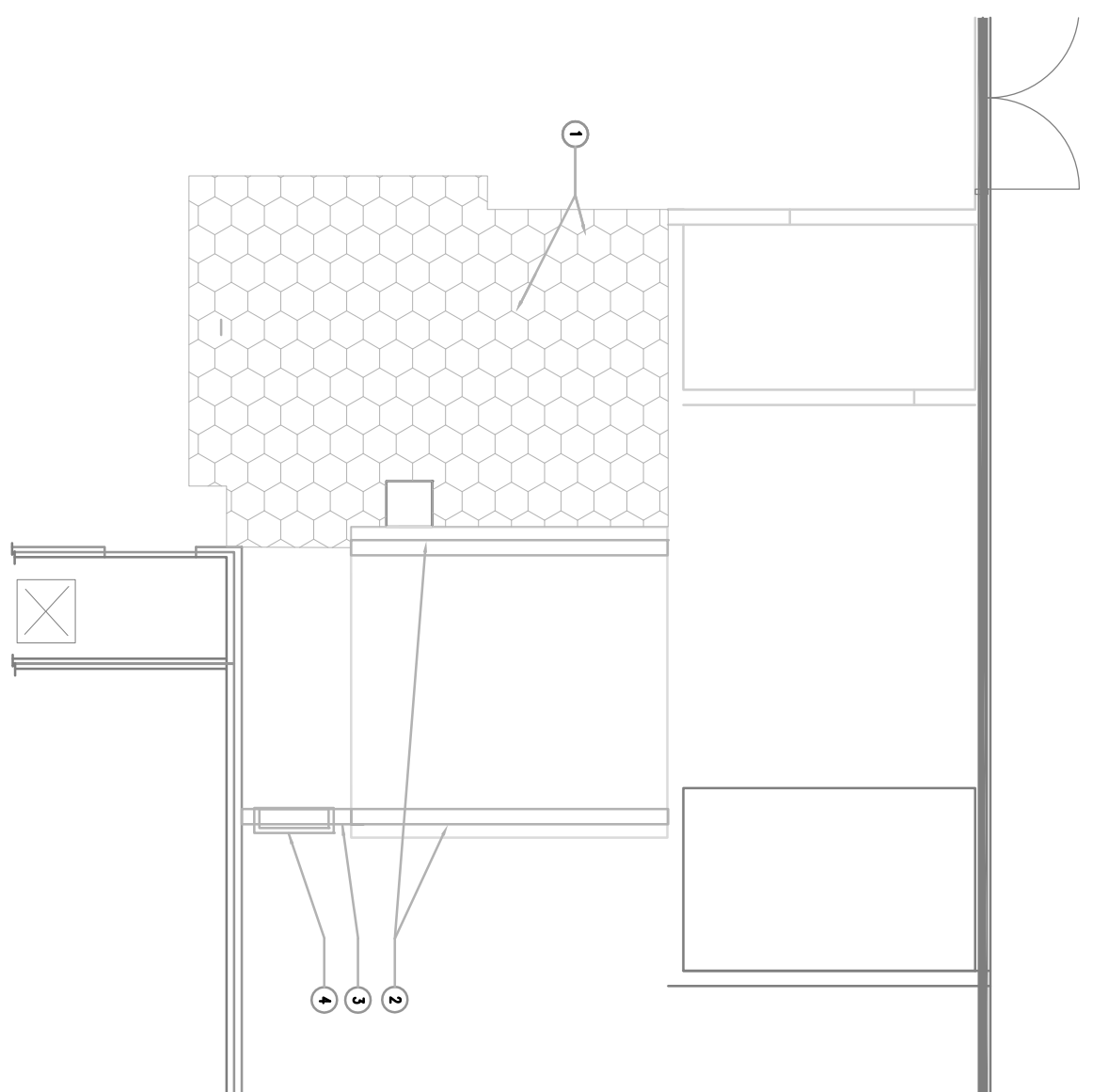


--	--	--	--	--	--	--	--	--	--	--	--	--	--	--	--	--	--	--	--	--	--	--	--	--	--	--	--	--	--	--	--	--	--	--	--	--	--	--	--	--	--	--	--	--	--	--	--	--	--	--	--	--	--	--	--	--	--	--	--	--	--	--	--	--	--	--	--	--	--	--	--	--	--	--	--	--	--	--	--	--	--	--	--	--	--	--	--	--	--	--	--	--	--	--	--	--	--	--	--	--	--	--	--	--	--	--	--	--	--	--	--	--	--	--	--	--	--	--	--	--	--	--	--	--	--	--	--	--	--	--	--	--	--	--	--	--	--	--	--	--	--	--	--	--	--	--	--	--	--	--	--	--	--	--	--	--	--	--	--	--	--	--	--	--	--	--	--	--	--	--	--	--	--	--	--	--	--	--	--	--	--	--	--	--	--	--	--	--	--	--	--	--	--	--	--	--	--	--	--	--	--	--	--	--	--	--	--	--	--	--	--	--	--	--	--	--	--	--	--	--	--	--	--	--	--	--	--	--	--	--	--	--	--	--	--	--	--	--	--	--	--	--	--	--	--	--	--	--	--	--	--	--	--	--	--	--	--	--	--	--	--	--	--	--	--	--	--	--	--	--	--	--	--	--	--	--	--	--	--	--	--	--	--	--	--	--	--	--	--	--	--	--	--	--	--	--	--	--	--	--	--	--	--	--	--	--	--	--	--	--	--	--	--	--	--	--	--	--	--	--	--	--	--	--	--	--	--	--	--	--	--	--	--	--	--	--	--	--	--	--	--	--	--	--	--	--	--	--	--	--	--	--	--	--	--	--	--	--	--	--	--	--	--	--	--	--	--	--	--	--	--	--	--	--	--	--	--	--	--	--	--	--	--	--	--	--	--	--	--	--	--	--	--	--	--	--	--	--	--	--	--	--	--	--	--	--	--	--	--	--	--	--	--	--	--	--	--	--	--	--	--	--	--	--	--	--	--	--	--	--	--	--	--	--	--	--	--	--	--	--	--	--	--	--	--	--	--	--	--	--	--	--	--	--	--	--	--	--	--	--	--	--	--	--	--	--	--	--	--	--	--	--	--	--	--	--	--	--	--	--	--	--	--	--	--	--	--	--	--	--	--	--	--	--	--	--	--	--	--	--	--	--	--	--	--	--	--	--	--	--	--	--	--	--	--	--	--	--	--	--	--	--	--	--	--	--	--	--	--	--	--	--	--	--	--	--	--	--	--	--	--	--	--	--	--	--	--	--	--	--	--	--	--	--	--	--	--	--	--	--	--	--	--	--	--	--	--	--	--	--	--	--	--	--	--	--	--	--	--	--	--	--	--	--	--	--	--	--	--	--	--	--	--	--	--	--	--	--	--	--	--	--	--	--	--	--	--	--	--	--	--	--	--	--	--	--	--	--	--	--	--	--	--	--	--	--	--	--	--	--	--	--	--	--	--	--	--	--	--	--	--	--	--	--	--	--	--	--	--	--	--	--	--	--	--	--	--	--	--	--	--	--	--	--	--	--	--	--	--	--	--	--	--	--	--	--	--	--	--	--	--	--	--	--	--	--	--	--	--	--	--	--	--	--	--	--	--	--	--	--	--	--	--	--	--	--	--	--	--	--	--	--	--	--	--	--	--	--	--	--	--	--	--	--	--	--	--	--	--	--	--	--	--	--	--	--	--	--	--	--	--	--	--	--	--	--	--	--	--	--	--	--	--	--	--	--	--	--	--	--	--	--	--	--	--	--	--	--	--	--	--	--	--	--	--	--	--	--	--	--	--	--	--	--	--	--	--	--	--	--	--	--	--	--	--	--	--	--	--	--	--	--	--	--	--	--	--	--	--	--	--	--	--	--	--	--	--	--	--	--	--	--	--	--	--	--	--	--	--	--	--	--	--	--	--	--	--	--	--	--	--	--	--	--	--	--	--	--	--	--	--	--	--	--	--	--	--	--	--	--	--	--	--	--	--	--	--	--	--	--	--	--	--	--	--	--	--	--	--	--	--	--	--	--	--	--	--	--	--	--	--	--	--	--	--	--	--	--	--	--	--	--	--	--	--	--	--	--	--	--	--	--	--	--	--	--	--	--	--	--	--	--	--	--	--	--	--	--	--	--	--	--	--	--	--	--	--	--	--	--	--	--	--	--	--	--	--	--	--	--	--	--	--	--	--	--	--	--	--	--	--	--	--	--	--	--	--	--	--	--	--	--	--	--	--	--	--	--	--	--	--	--	--	--	--	--	--	--	--	--	--	--	--	--	--	--	--	--	--	--	--	--	--	--	--	--	--	--	--	--	--	--	--	--	--	--	--	--	--	--	--	--	--	--	--	--	--	--	--	--	--	--	--	--	--	--	--	--	--	--	--	--	--	--	--	--	--	--	--	--	--	--	--	--	--	--	--	--	--	--	--	--	--	--	--	--	--	--	--	--	--	--	--	--	--	--	--	--	--	--	--	--	--	--	--	--	--	--	--	--	--	--	--	--	--	--	--	--	--	--	--	--	--	--	--	--	--	--	--	--	--	--	--	--	--	--	--	--	--	--	--	--	--	--	--	--	--	--	--	--	--	--	--	--	--	--	--	--	--	--	--	--	--	--	--	--	--	--	--	--	--	--	--	--	--	--	--	--	--	--	--	--	--	--	--	--	--	--	--	--	--	--	--	--	--	--	--	--	--	--	--	--	--	--	--	--	--	--	--	--	--	--	--	--	--	--	--	--	--	--	--	--	--	--	--	--	--	--	--	--	--	--	--	--	--	--	--	--	--	--	--	--	--	--	--	--	--	--	--	--	--	--	--



- KEY NOTES**
- 1 REMOVE EXISTING DOOR & FRAME
 - 2 REMOVE EXISTING TILE & WOOD FRAME SUBSTRATE & STRUCTURE
 - 3 REMOVE EXISTING RAUP
 - 4 REMOVE EXISTING WALL
 - 5 EXISTING CART WASHER TO BE REMOVED BY OTHERS

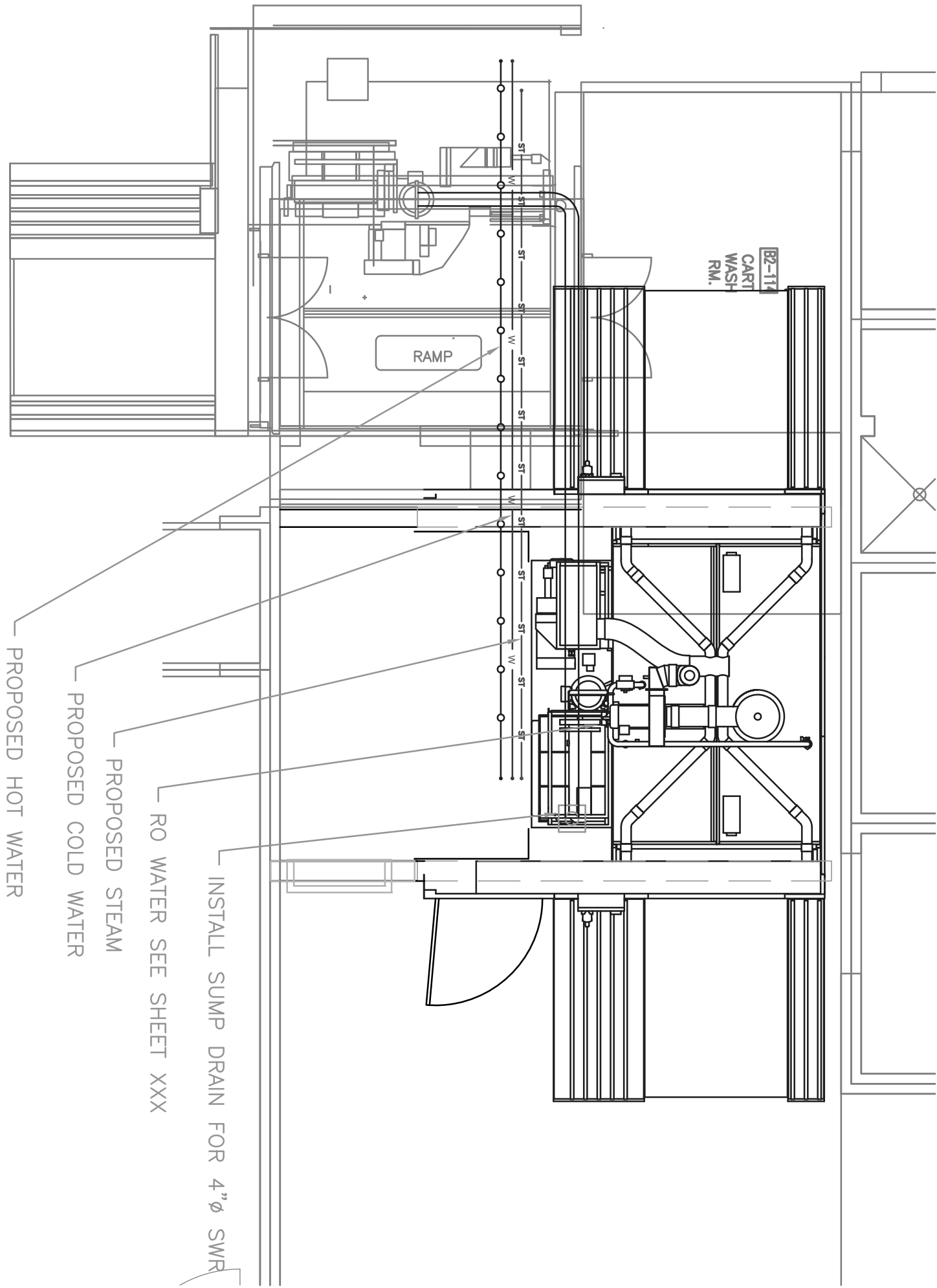
FLOORING AND WALL DEMOLITION



- ### KEY NOTES
1. INSTALL DOOR & FRAME
 2. INSTALL WALL FROM TOP OF CART WASHER TO CEILING
 3. INSTALL WALL FROM FLOOR TO CEILING
 4. INSTALL PASS THROUGH WINDOW

FLOORING AND WALL CONSTRUCTION

[illegible]

[illegible]

CONSULTANTS:

Drawing Title	UTILITY PLAN
---------------	--------------

Approved: Project Director
SYLVIE RUPP - CFM DIRECTOR
FACILITIES/ENGINEERING
PHONE: 307-778-7550 X 7267
FAX: 307-287-9725

Project Title
CART WASHER REPLACEMENT

Location
CHEYENNE VA MEDICAL CENTER

Date
2/9/2017

Checke
XX

Drawn

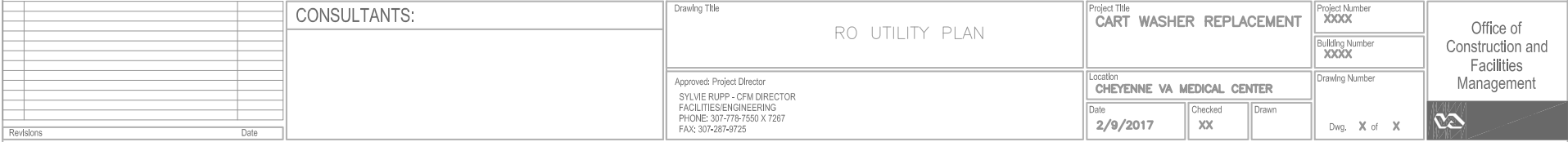
Project Number
XXXXBuilding Number
XXXX

Drawing Number

Dwg. X of X

Office of
Construction and
Facilities
Management

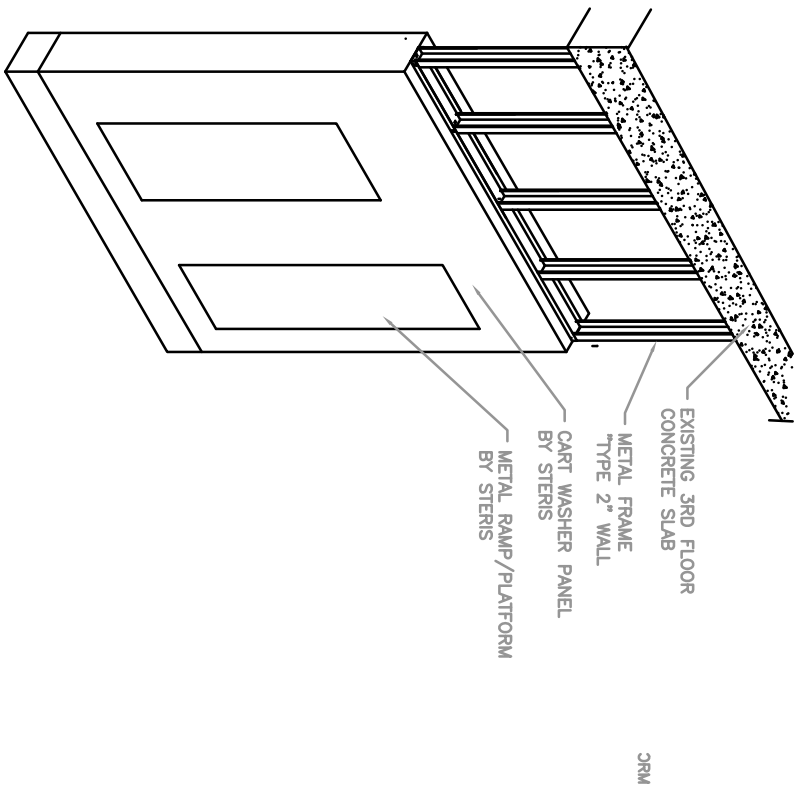






VA FORM 08-6231, OCT 1978

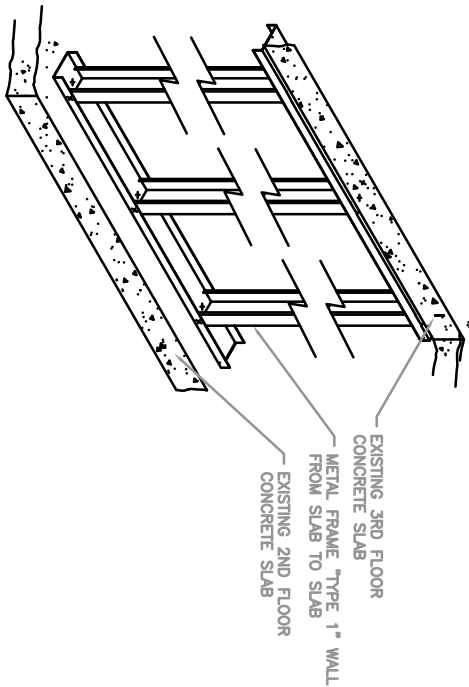
2 WALL TYPE: CART WASHER TO CEILING



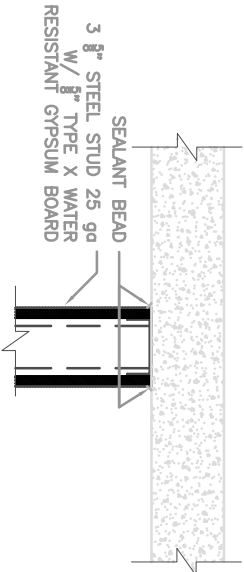
D REFLECTED CEILING PLAN
1/4" = 1'-0"

D REFLECTED CEILING PLAN
1/4" = 1'-0"

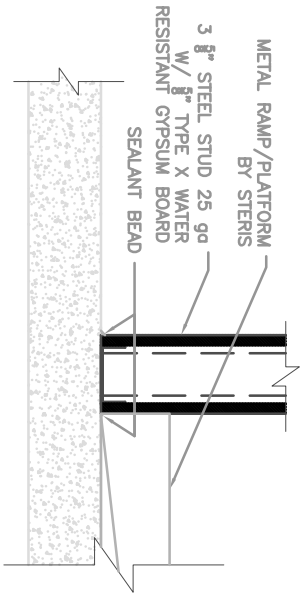
1 WALL TYPE: FLOOR TO CEILING



A WALL TO CEILING DETAIL
X NTS



B WALL TO FLOOR DETAIL
X NTS



CONSULTANTS:

Drawing Title
FLOOR/CEILING

Approved: Project Director
SYLVIE RUPP - CFM DIRECTOR
FACILITIES/ENGINEERING
PHONE: 307-778-7550 X 7267
FAX: 307-287-9725

Project Title
CART WASHER REPLACEMENT

Location
CHEYENNE VA MEDICAL CENTER

Date
2/9/2017

Checked
XX

Drawn

Project Number
XXXX

Building Number
XXXX

Drawing Number

Dwg. X of X

Office of
Construction and
Facilities
Management

