

NOTE:

1. SEE FLOOR PLANS FOR PIPE SIZES, INLET PRESSURE IS 60 PSI DISCHARGE AT 15 PSI, ADJUSTABLE.
2. SEE EQUIPMENT SCHEDULES FOR VALVE DATA AND PIPE SIZES D1 AND D2. INSTALL VALVES AS RECOMMENDED BY MANUFACTURER.
3. MAKE BYPASS VALVE DISCHARGE PIPE THE SAME SIZE AS D2 FOR THE LARGEST PRV. REUSE EXISTING DRIP PAN ELBOW AND ITS PIPING THRU ROOF.
4. PROVIDE NECESSARY UNIONS FOR THE REMOVAL OF VALVE WITH SCREWED CONNECTIONS.

ALL VACUUM BREAKERS SPRING LOADED TYPE.

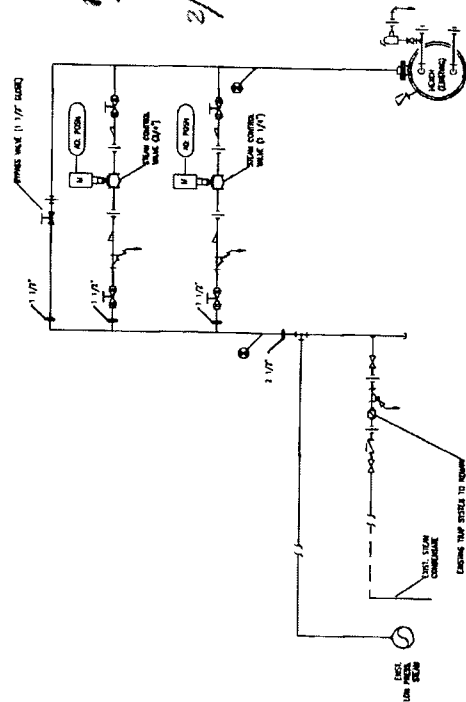
FABRICATE NEW GALVANIZED STEEL FLOOR SUPPORT FRAME FOR PRV STATION.

STEAM PRESSURE REDUCING STATION DOUBLE VALVE (1/3 AND 2/3)

8

MH-702

NTS



PC 105: EXISTING HEAT EXCHANGER - NEW STEAM PIPING

		Approved: VA Medical Center Facility Manager		Project Title		HVAC EMS Upgrades		Drawing Title		STEAM PIPING DETAILS		Project Number 5C4-11-117		Drawing Number ONE		Sheet 4 of 4	
		Approved: Engineering Service Chief		One each or not to scale 1		NO SCALE		Location		Fayetteville, Arkansas		Drawing Number MP-01		Drawing Number ONE		Sheet 4 of 4	
				Date				Checked		SW		Drawn		SW		Date 14 JUN 11	
				Notes and/or Revisions:													
				DATE IN ROW OF 4218 APR 2008													