

1 EXISTING BLDG. 7 FIRE ALARM PLAN  
F1.0 SCALE: 1/8" = 1'-0"

SCHEDULES / LEGENDS	
DEVICE LEGEND	
SYMBOL	DESCRIPTION
	FIRE ALARM CONTROL PANEL
	FIRE ALARM ANNUNCIATOR PANEL
	FIRE ALARM REMOTE POWER SUPPLY PANEL
	DIGITAL VOICE COMMAND PANEL
	SMOKE DETECTOR
	HEAT DETECTOR
	DUCT DETECTOR
	PULL STATION
	AUDIO / VISUAL INDICATING DEVICE - WALL MOUNT
	AUDIO / VISUAL INDICATING DEVICE - CEILING MOUNT
	VISUAL ONLY INDICATING DEVICE - WALL MOUNT
	VISUAL ONLY INDICATING DEVICE - CEILING MOUNT
	SPEAKER / VISUAL INDICATING DEVICE - WALL MOUNT
	SPEAKER / VISUAL INDICATING DEVICE - CEILING MOUNT
	SPEAKER ONLY INDICATING DEVICE - WALL MOUNT
	SPEAKER ONLY INDICATING DEVICE - CEILING MOUNT
	MONITOR MODULE (T=TAMPER, F=FLOW, P=PRESSURE)
	CONTROL MODULE
	RELAY MODULE
	REMOTE INDICATOR WITH TEST STATION (KEYED) FOR DUCT DETECTOR
	REMOTE INDICATOR FOR DUCT DETECTOR
	DOOR HOLDER
	JUNCTION BOX (HORIZONTAL WIRING)
	JUNCTION BOX (VERTICAL WIRING)
	FIRE ALARM BELL ONLY
	END OF LINE (EOL) RESISTOR
	REPRESENTS WIRE OR CIRCUIT GOING "OUT"
	REPRESENTS WIRE OR CIRCUIT COMING "IN"

- GENERAL NOTES:
- REFER TO DEFICIENCIES PAGE FOR EXPLANATION.
  - ALL VISUAL NOTIFICATION DEVICES SHALL HAVE A 15 CANDELLA RATING UNLESS SHOWN OTHERWISE ON PLANS (i.e. 30cd, 75cd, etc...).

EXISTING STROBE COVERAGE

**TriTek**  
Fire, Security & Communications  
THE INTEGRATION OF TECHNOLOGY AND LIFE SAFETY

DORN VA BUILDING 7  
6439 GARNER'S FERRY RD  
COLUMBIA, SOUTH CAROLINA

EXISTING FIRE ALARM PLAN

DRAWN BY:  
JA

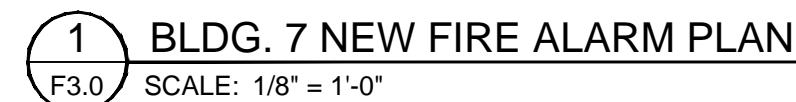
CHECKED BY:  
ES

PROJECT NUMBER:  
12429

DATE  
04-27-2016

7F1.0  
DRAWING NO X OF X





— — — — — DENOTES EXISTING DEVICE TO REMAIN  
————— DENOTES NEW DEVICE

7F3.0

DRAWING NO X OF X

