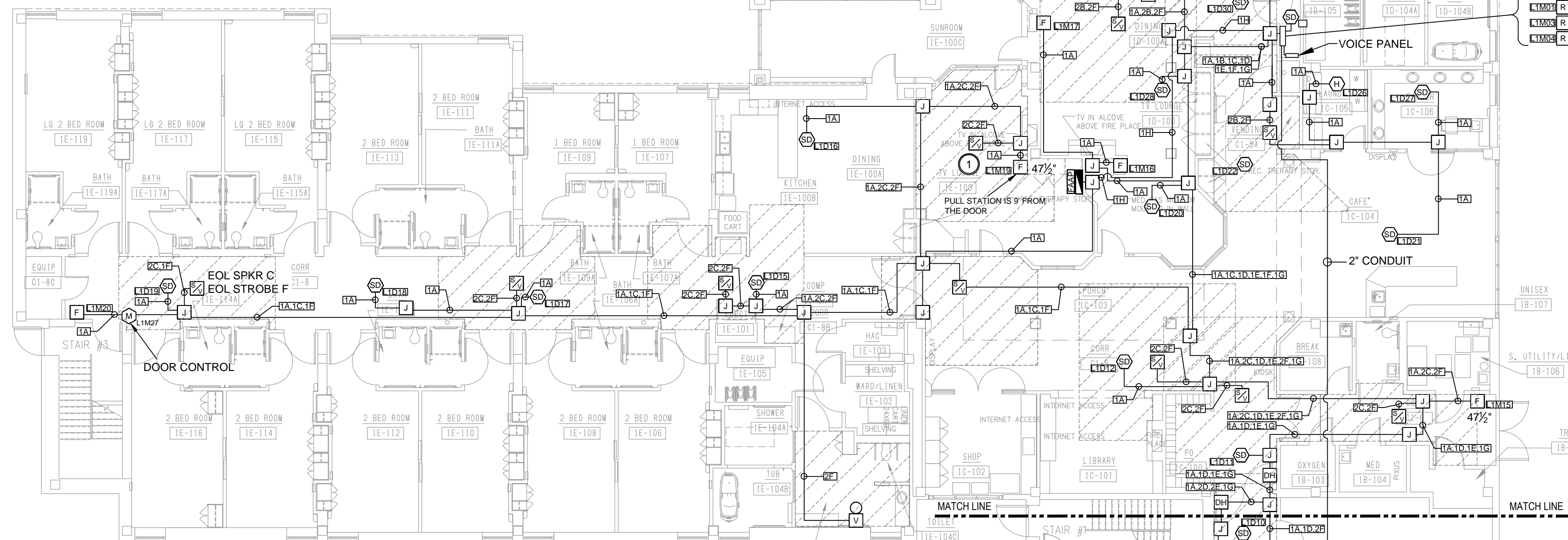


2 FIRE PROTECTION PLAN - FIRST FLOOR  
F1.0 SCALE: 3/32" = 1'-0"



1 EXISTING FIRE ALARM PLAN - FIRST FLOOR  
F1.0 SCALE: 3/32" = 1'-0"

#### GENERAL NOTES

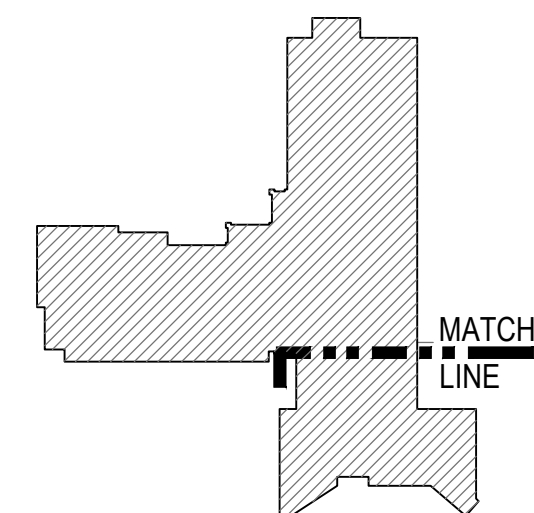
1. HEIGHTS FOR PULL STATIONS ARE WITHIN CODE.
2. HEIGHTS FOR NOTIFICATION DEVICES ARE WITHIN CODE.
3. SOME FIRE ALARM IN 1/2" CONDUIT. REPLACE 1/2" CONDUIT WITH AT LEAST 3/4" CONDUIT AND INSTALL PER VA STANDARDS.
4. INADEQUATE SPEAKER/STROBE COVERAGE IN BUILDING. REFER TO DRAWINGS FOR LOCATIONS AND INSTALL DEVICES PER NFPA 72 STANDARDS. SEE EASE DRAWINGS.

| DEVICE LEGEND |  |
|---------------|--|
| SYMBOL        | DESCRIPTION  |
|               | FIRE ALARM CONTROL PANEL                                     |
|               | FIRE ALARM ANNUNCIATOR PANEL                                 |
|               | FIRE ALARM REMOTE POWER SUPPLY PANEL                         |
|               | DIGITAL VOICE COMMAND PANEL                                  |
|               | SMOKE DETECTOR   |
|               | HEAT DETECTOR  |
|               | DUCT DETECTOR  |
|               | PULL STATION   |
|               | AUDIO / VISUAL INDICATING DEVICE - WALL MOUNT                |
|               | AUDIO / VISUAL INDICATING DEVICE - CEILING MOUNT             |
|               | VISUAL ONLY INDICATING DEVICE - WALL MOUNT                   |
|               | VISUAL ONLY INDICATING DEVICE - CEILING MOUNT                |
|               | SPEAKER / VISUAL INDICATING DEVICE - WALL MOUNT              |
|               | SPEAKER / VISUAL INDICATING DEVICE - CEILING MOUNT           |
|               | SPEAKER ONLY INDICATING DEVICE - WALL MOUNT                  |
|               | SPEAKER ONLY INDICATING DEVICE - CEILING MOUNT               |
|               | MONITOR MODULE (T=TAMPER, F=FLOW, P=PRESSURE)                |
|               | CONTROL MODULE   |
|               | RELAY MODULE   |
|               | REMOTE INDICATOR WITH TEST STATION (KEYED) FOR DUCT DETECTOR |
|               | REMOTE INDICATOR FOR DUCT DETECTOR                           |
|               | DOOR HOLDER  |
|               | JUNCTION BOX (HORIZONTAL WIRING)                             |
|               | JUNCTION BOX (VERTICAL WIRING)                               |
|               | FIRE ALARM BELL ONLY   |
|               | END OF LINE (EOL) RESISTOR                                   |
|               | REPRESENTS WIRE OR CIRCUIT GOING "OUT"                       |
|               | REPRESENTS WIRE OR CIRCUIT COMING "IN"                       |

#### GENERAL NOTES:

1. # REFER TO DEFICIENCIES PAGE FOR EXPLANATION.
2. ALL VISUAL NOTIFICATION DEVICES SHALL HAVE A 15 CANDELLA RATING UNLESS SHOWN OTHERWISE ON PLANS (i.e. 30cd, 75cd, etc...).

EXISTING STROBE COVERAGE



6 WOODCROSS DRIVE  
COLUMBIA, SC 29212  
PHONE: 803-407-0747  
FAX: 803-407-0779

**Tritek**  
Fire & Security, LLC  
The Integration of Technology and Life Safety

NURSING HOME CARE UNIT - BUILDING 103

V.A. MEDICAL CENTER  
COLUMBIA, SOUTH CAROLINA

EXISTING FIRE PLAN - FIRST FLOOR

DRAWN BY:  
JA

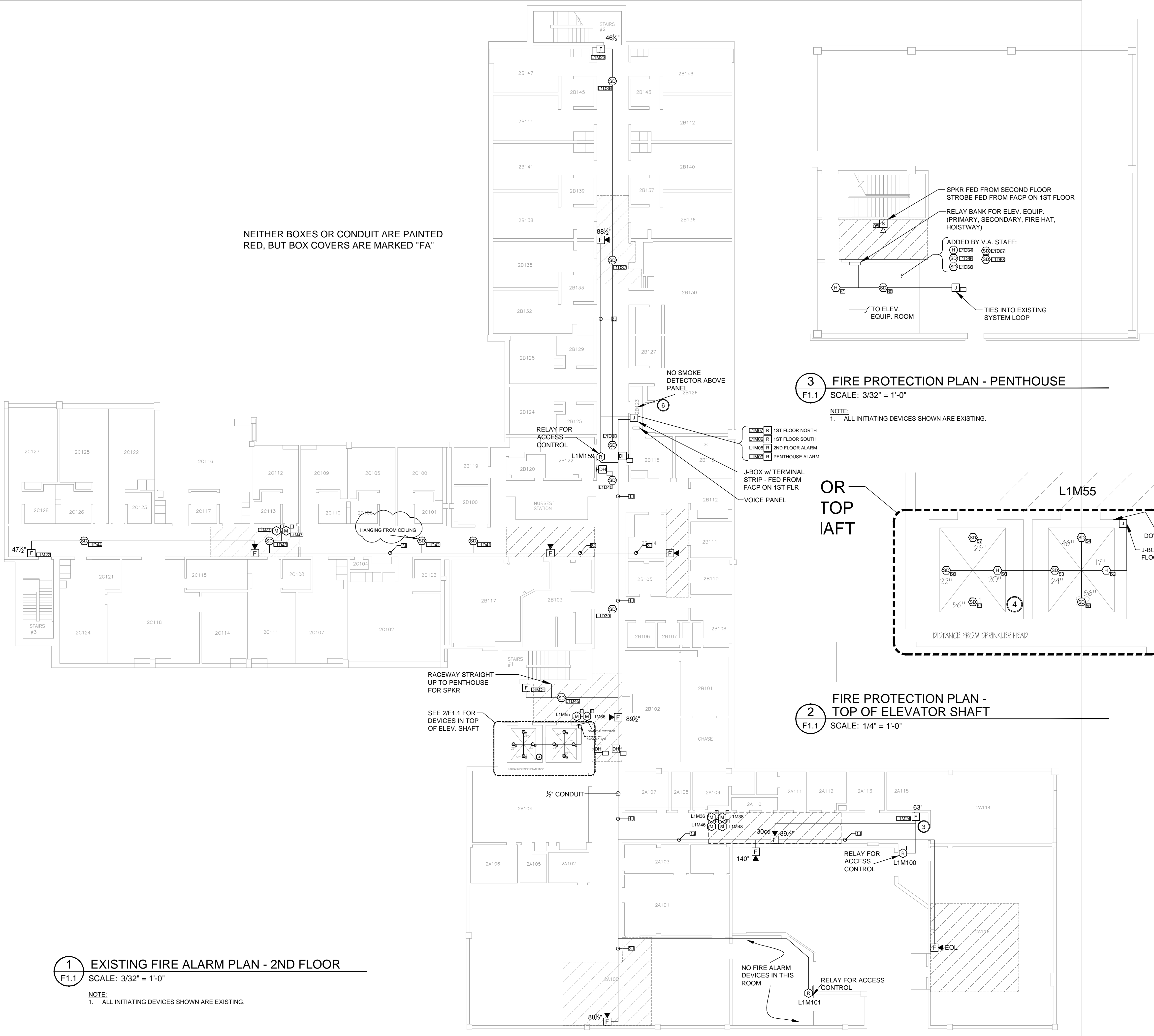
CHECKED BY:  
ES

12429

DATE  
05-23-16

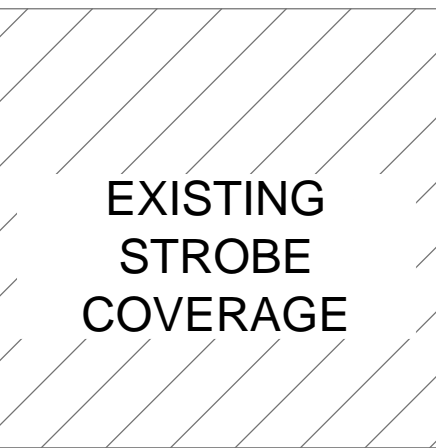
103F1.0

DRAWING NO X OF X



| DEVICE LEGEND |  |
|---------------|--|
| SYMBOL        | DESCRIPTION  |
|               | FIRE ALARM CONTROL PANEL                                     |
|               | FIRE ALARM ANNUNCIATOR PANEL                                 |
|               | FIRE ALARM REMOTE POWER SUPPLY PANEL                         |
|               | DIGITAL VOICE COMMAND PANEL                                  |
|               | SMOKE DETECTOR   |
|               | HEAT DETECTOR  |
|               | DUCT DETECTOR  |
|               | PULL STATION   |
|               | AUDIO / VISUAL INDICATING DEVICE - WALL MOUNT                |
|               | AUDIO / VISUAL INDICATING DEVICE - CEILING MOUNT             |
|               | VISUAL ONLY INDICATING DEVICE - WALL MOUNT                   |
|               | VISUAL ONLY INDICATING DEVICE - CEILING MOUNT                |
|               | SPEAKER / VISUAL INDICATING DEVICE - WALL MOUNT              |
|               | SPEAKER / VISUAL INDICATING DEVICE - CEILING MOUNT           |
|               | SPEAKER ONLY INDICATING DEVICE - WALL MOUNT                  |
|               | SPEAKER ONLY INDICATING DEVICE - CEILING MOUNT               |
|               | MONITOR MODULE (T=TAMPER, F=FLOW, P=PRESSURE)                |
|               | CONTROL MODULE   |
|               | RELAY MODULE   |
|               | REMOTE INDICATOR WITH TEST STATION (KEYED) FOR DUCT DETECTOR |
|               | REMOTE INDICATOR FOR DUCT DETECTOR                           |
|               | DOOR HOLDER  |
|               | JUNCTION BOX (HORIZONTAL WIRING)                             |
|               | JUNCTION BOX (VERTICAL WIRING)                               |
|               | FIRE ALARM BELL ONLY   |
|               | END OF LINE (EOL) RESISTOR                                   |
|               | REPRESENTS WIRE OR CIRCUIT GOING "OUT"                       |
|               | REPRESENTS WIRE OR CIRCUIT COMING "IN"                       |

- GENERAL NOTES:
- REFER TO DEFICIENCIES PAGE FOR EXPLANATION.
  - ALL VISUAL NOTIFICATION DEVICES SHALL HAVE A 15 CANDELLA RATING UNLESS SHOWN OTHERWISE ON PLANS (i.e. 30cd, 75cd, etc.).



6 WOODCROSS DRIVE  
COLUMBIA, SC 29212  
PHONE: 803-407-0747  
FAX: 803-407-0779

NURSING HOME CARE UNIT - BUILDING 103  
V.A. MEDICAL CENTER  
COLUMBIA, SOUTH CAROLINA

EXISTING FIRE ALARM PLAN - 2ND FLOOR

DRAWN BY:  
JA

CHECKED BY:  
ES

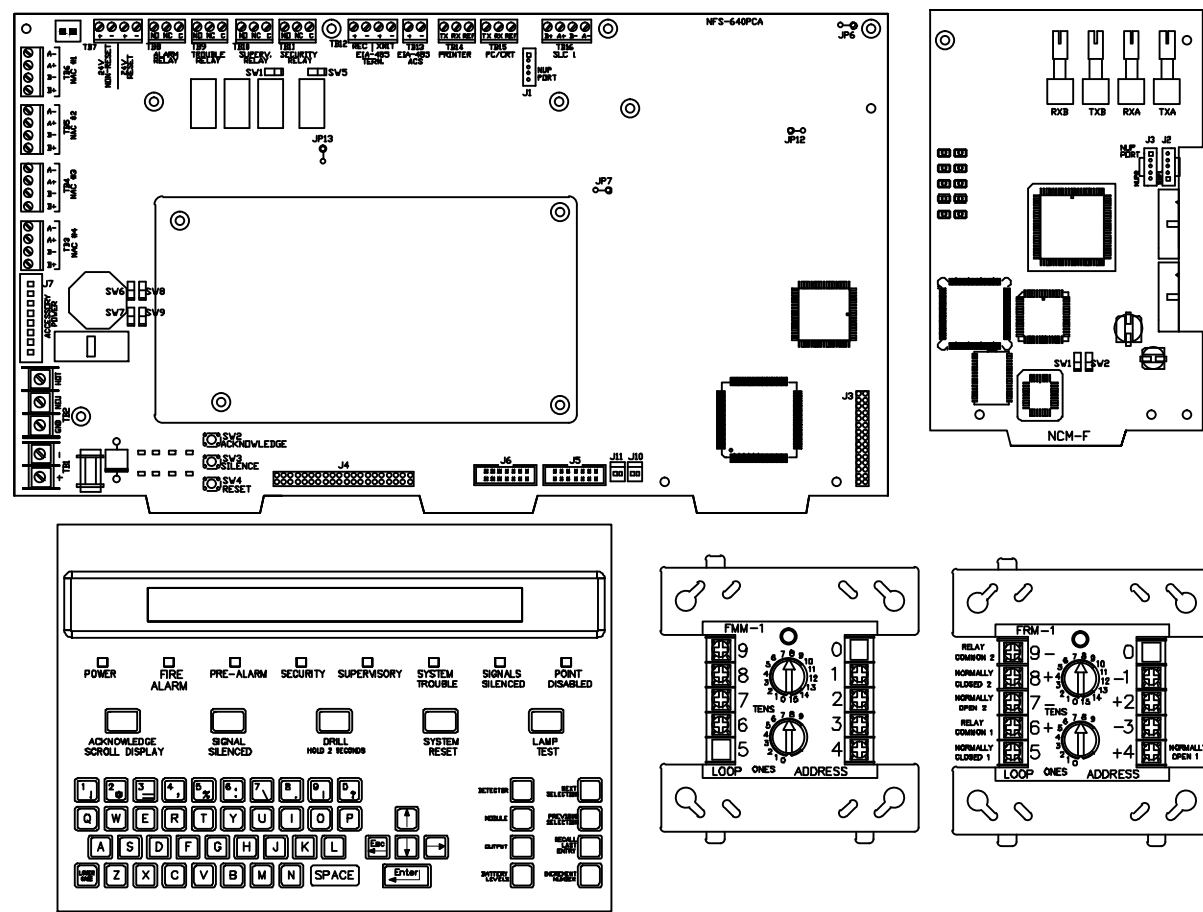
12429

DATE  
05-23-16

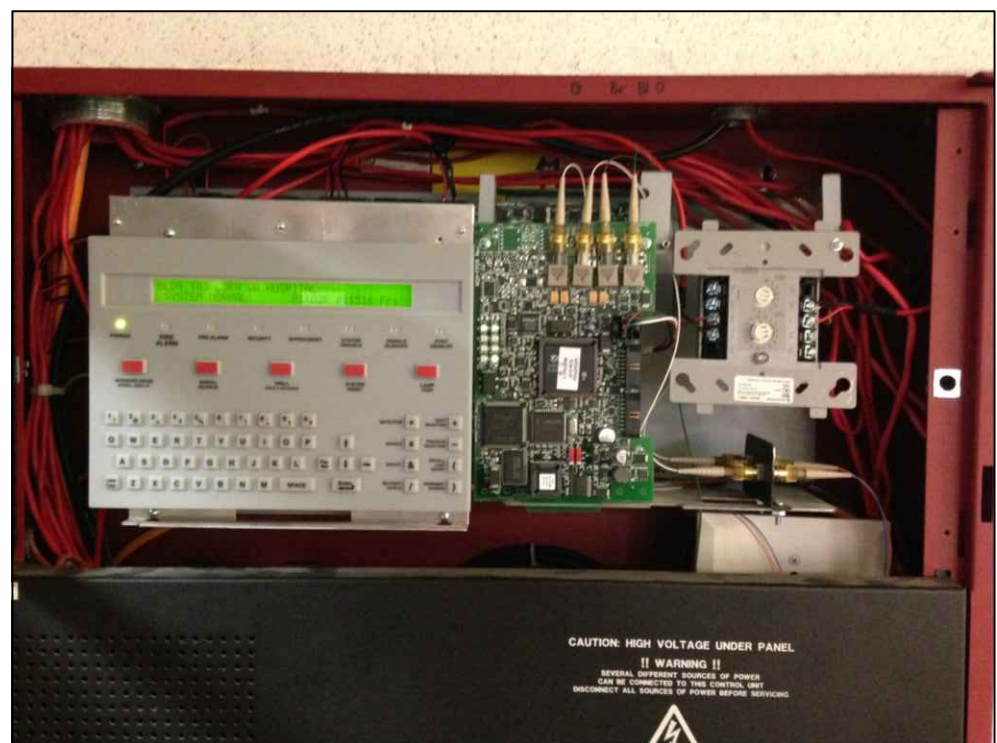
103F1.1

DRAWING NO X OF X

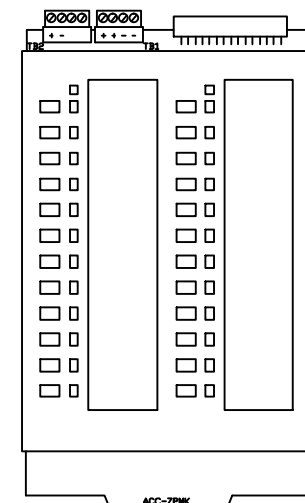




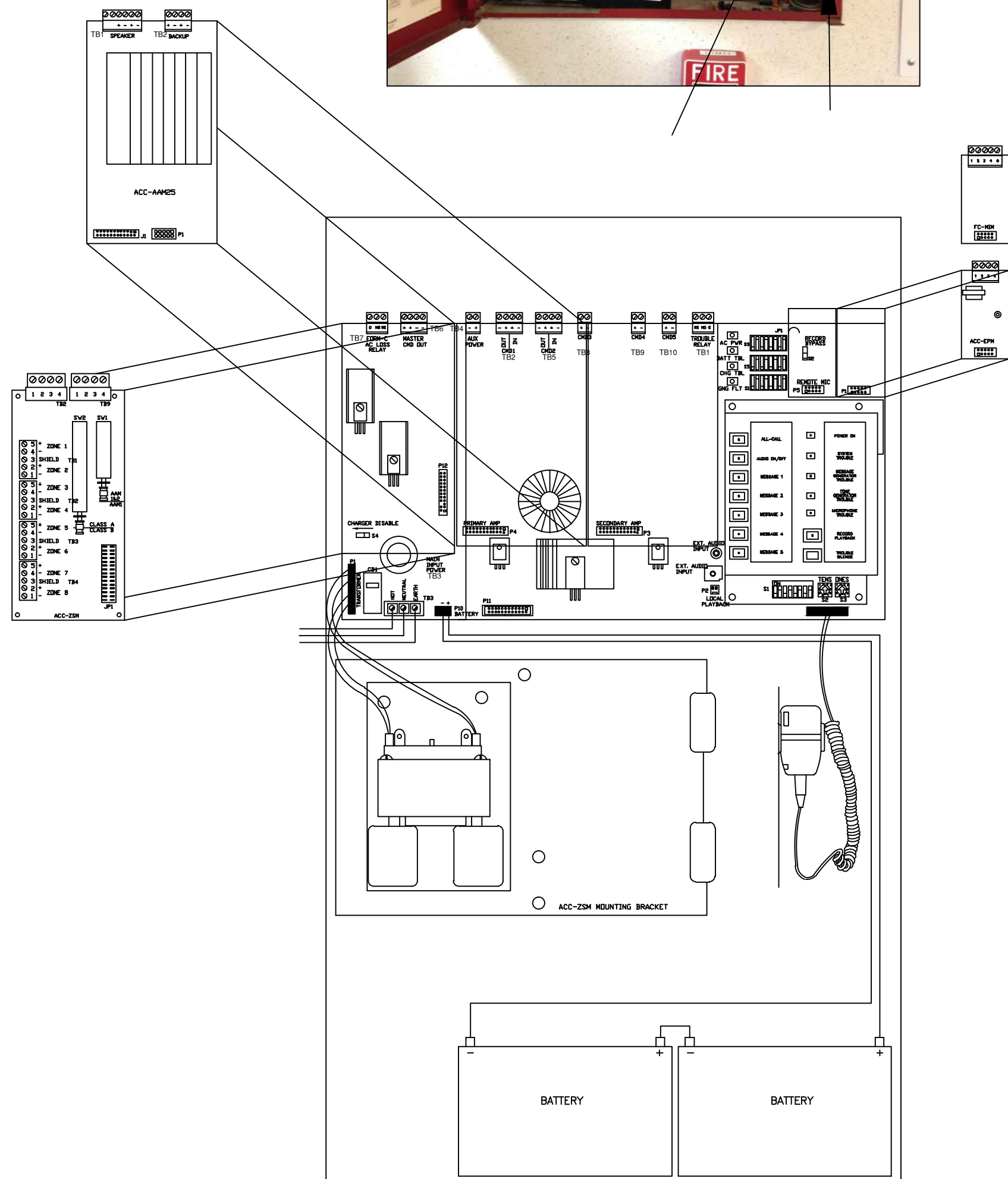
NFS-640



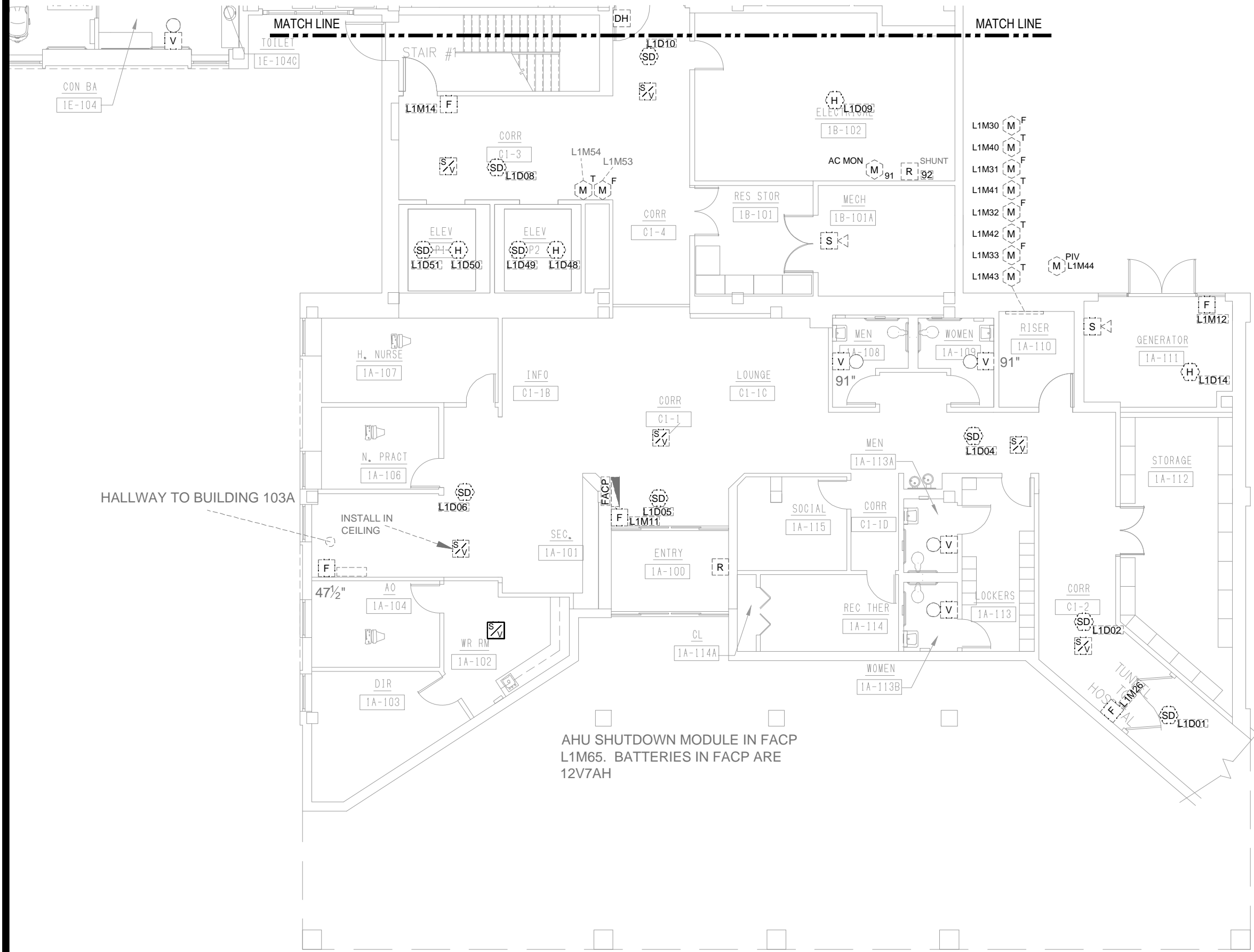
- EQUIPMENT:  
NFS-640  
NCM-F  
FMM-1  
FRM-1  
12V 8AH BATTERIES (2)  
FIRE VOICE 25/50 WITH 2 CIRCUITS



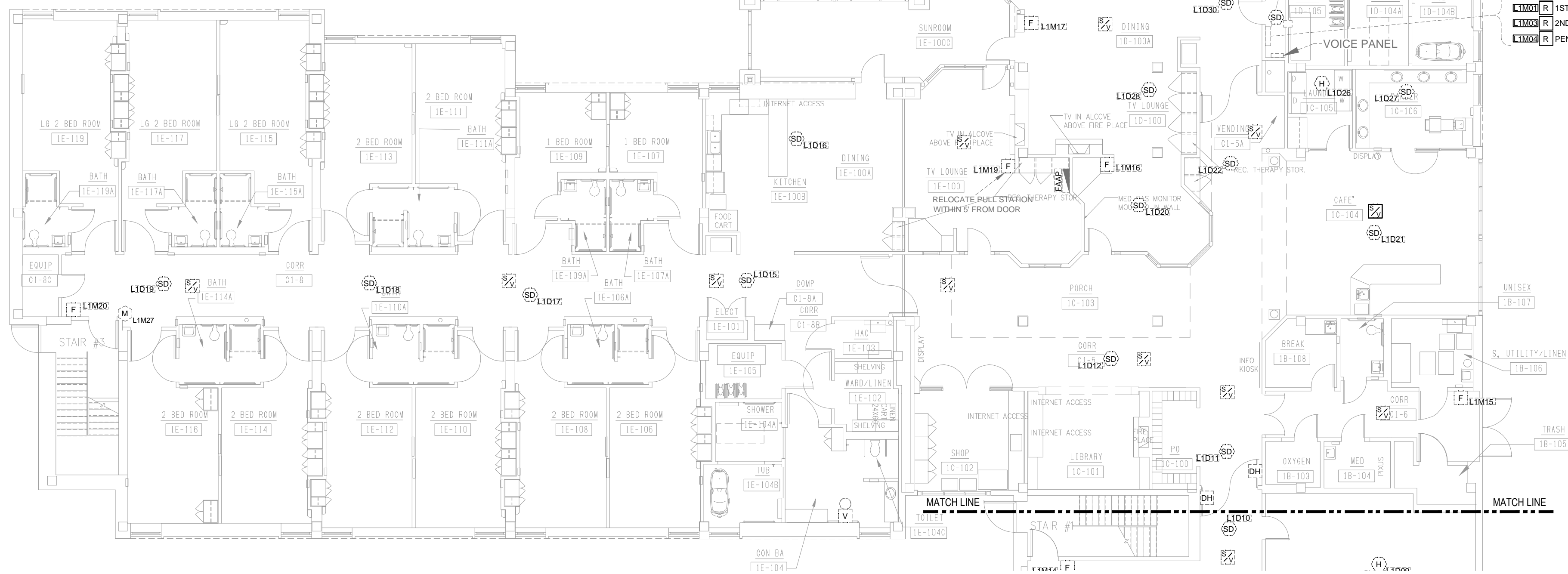
NOTES:  
PANEL AT FRONT ENTRANCE. TWO MODULES  
INSTALLED INSIDE BACK BOX AND EXTRA  
HOLES CUT INTO BACK BOX. FOUR NAC  
CIRCUITS USED.







2 NEW FIRE PROTECTION PLAN - FIRST FLOOR  
F3.0 SCALE: 3/32" = 1'-0"



1 NEW FIRE ALARM PLAN - FIRST FLOOR  
F3.0 SCALE: 3/32" = 1'-0"

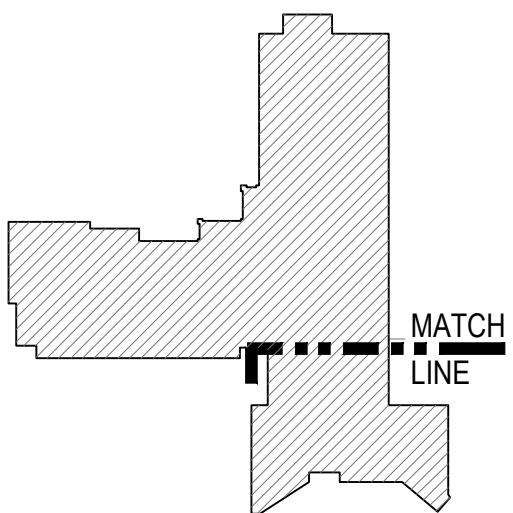
| DEVICE LEGEND |  |
|---------------|--|
| SYMBOL        | DESCRIPTION  |
|               | FIRE ALARM CONTROL PANEL                                     |
|               | FIRE ALARM ANNUNCIATOR PANEL                                 |
|               | FIRE ALARM REMOTE POWER SUPPLY PANEL                         |
|               | DIGITAL VOICE COMMAND PANEL                                  |
|               | SMOKE DETECTOR   |
|               | HEAT DETECTOR  |
|               | DUCT DETECTOR  |
|               | PULL STATION   |
|               | AUDIO / VISUAL INDICATING DEVICE - WALL MOUNT                |
|               | AUDIO / VISUAL INDICATING DEVICE - CEILING MOUNT             |
|               | VISUAL ONLY INDICATING DEVICE - WALL MOUNT                   |
|               | VISUAL ONLY INDICATING DEVICE - CEILING MOUNT                |
|               | SPEAKER / VISUAL INDICATING DEVICE - WALL MOUNT              |
|               | SPEAKER / VISUAL INDICATING DEVICE - CEILING MOUNT           |
|               | SPEAKER ONLY INDICATING DEVICE - WALL MOUNT                  |
|               | SPEAKER ONLY INDICATING DEVICE - CEILING MOUNT               |
|               | MONITOR MODULE (T=TAMPER, F=FLOW, P=PRESSURE)                |
|               | CONTROL MODULE   |
|               | RELAY MODULE   |
|               | REMOTE INDICATOR WITH TEST STATION (KEYED) FOR DUCT DETECTOR |
|               | REMOTE INDICATOR FOR DUCT DETECTOR                           |
|               | DOOR HOLDER  |
|               | JUNCTION BOX (HORIZONTAL WIRING)                             |
|               | JUNCTION BOX (VERTICAL WIRING)                               |
|               | FIRE ALARM BELL ONLY   |
|               | END OF LINE (EOL) RESISTOR                                   |
|               | REPRESENTS WIRE OR CIRCUIT GOING "OUT"                       |
|               | REPRESENTS WIRE OR CIRCUIT COMING "IN"                       |

GENERAL NOTES:

REFER TO DEFICIENCIES PAGE FOR EXPLANATION.

ALL VISUAL NOTIFICATION DEVICES SHALL HAVE A 15 CANDELLA RATING UNLESS SHOWN OTHERWISE ON PLANS (i.e. 30cd, 75cd, etc...).

|     |                                   |
|-----|-----------------------------------|
| --- | DENOTES EXISTING DEVICE TO REMAIN |
| --- | DENOTES NEW DEVICE                |



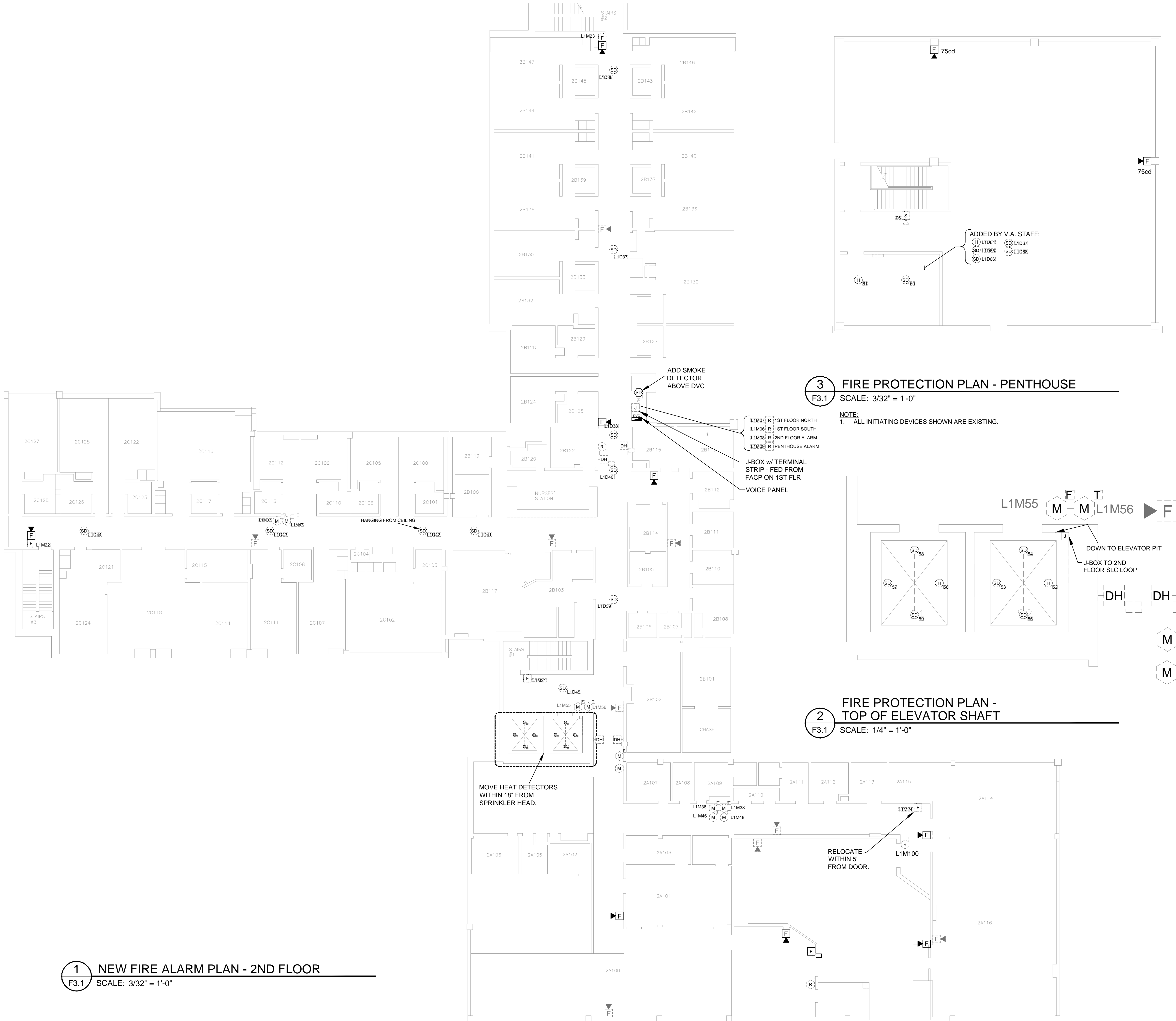
6 WOODCROSS DRIVE  
COLUMBIA, SC 29212  
PHONE: 803-407-0747  
FAX: 803-407-0779

NURSING HOME CARE UNIT - BUILDING 103  
V.A. MEDICAL CENTER  
COLUMBIA, SOUTH CAROLINA

NEW FIRE ALARM PLAN - FIRST FLOOR

|             |
|-------------|
| DRAWN BY:   |
| JA          |
| CHECKED BY: |
| ES          |
| 12429       |
| DATE        |
| 05-23-16    |

103F3.0  
DRAWING NO X OF X



| SYMBOL | DESCRIPTION  |
|--------|--|
|        | FIRE ALARM CONTROL PANEL                                     |
|        | FIRE ALARM ANNUNCIATOR PANEL                                 |
|        | FIRE ALARM REMOTE POWER SUPPLY PANEL                         |
|        | DIGITAL VOICE COMMAND PANEL                                  |
|        | SMOKE DETECTOR   |
|        | HEAT DETECTOR  |
|        | DUCT DETECTOR  |
|        | PULL STATION   |
|        | AUDIO / VISUAL INDICATING DEVICE - WALL MOUNT                |
|        | AUDIO / VISUAL INDICATING DEVICE - CEILING MOUNT             |
|        | VISUAL ONLY INDICATING DEVICE - WALL MOUNT                   |
|        | VISUAL ONLY INDICATING DEVICE - CEILING MOUNT                |
|        | SPEAKER / VISUAL INDICATING DEVICE - WALL MOUNT              |
|        | SPEAKER / VISUAL INDICATING DEVICE - CEILING MOUNT           |
|        | SPEAKER ONLY INDICATING DEVICE - WALL MOUNT                  |
|        | SPEAKER ONLY INDICATING DEVICE - CEILING MOUNT               |
|        | MONITOR MODULE (T=TAMPER, F=FLOW, P=PRESSURE)                |
|        | CONTROL MODULE   |
|        | RELAY MODULE   |
|        | REMOTE INDICATOR WITH TEST STATION (KEYED) FOR DUCT DETECTOR |
|        | REMOTE INDICATOR FOR DUCT DETECTOR                           |
|        | DOOR HOLDER  |
|        | JUNCTION BOX (HORIZONTAL WIRING)                             |
|        | JUNCTION BOX (VERTICAL WIRING)                               |
|        | FIRE ALARM BELL ONLY   |
|        | END OF LINE (EOL) RESISTOR                                   |
|        | REPRESENTS WIRE OR CIRCUIT GOING "OUT"                       |
|        | REPRESENTS WIRE OR CIRCUIT COMING "IN"                       |

GENERAL NOTES:

REFER TO DEFICIENCIES PAGE FOR EXPLANATION.

ALL VISUAL NOTIFICATION DEVICES SHALL HAVE A 15 CANDELLA RATING UNLESS SHOWN OTHERWISE ON PLANS (i.e. 30cd, 75cd, etc...).

|  |                                   |
|--|-----------------------------------|
|  | DENOTES EXISTING DEVICE TO REMAIN |
|  | DENOTES NEW DEVICE                |

NURSING HOME CARE UNIT - BUILDING 103

V.A. MEDICAL CENTER  
COLUMBIA, SOUTH CAROLINA

NEW FIRE ALARM PLAN - 2ND FLOOR

DRAWN BY:  
JA

CHECKED BY:  
ES

12429

DATE  
05-23-16

103F3.1

DRAWING NO X OF X

6 WOODCROSS DRIVE  
COLUMBIA, SC 29212  
PHONE: 803-407-0747  
FAX: 803-407-0779

**Tritek**  
Fire & Security, LLC  
The Integration of Technology and Life Safety



1 EXISTING SOUND MAPPING - FIRST FLOOR  
F4.0 SCALE: 1/8" = 1'-0"

**Tritek**  
Fire & Security, LLC  
The Integration of Technology and Life Safety  
6 WOODCROSS DRIVE  
COLUMBIA, SC 29212  
PHONE: 803-407-0747  
FAX: 803-407-0779

NURSING HOME CARE UNIT - BUILDING 103  
V.A. MEDICAL CENTER  
COLUMBIA, SOUTH CAROLINA  
EXIST. SOUND MAPPING PLAN - 1ST FLOOR

DRAWN BY:  
JA  
CHECKED BY:  
ES  
12429  
DATE  
05-23-16

103F4.0  
DRAWING NO X OF X



ft



1 NEW SOUND MAPPING - FIRST FLOOR  
F4.0 SCALE: 1/8" = 1'-0"

NURSING HOME CARE UNIT - BUILDING 103  
V.A. MEDICAL CENTER  
COLUMBIA, SOUTH CAROLINA

NEW SOUND MAPPING PLAN - 1ST FLOOR

DRAWN BY:  
JA

CHECKED BY:  
ES

12429

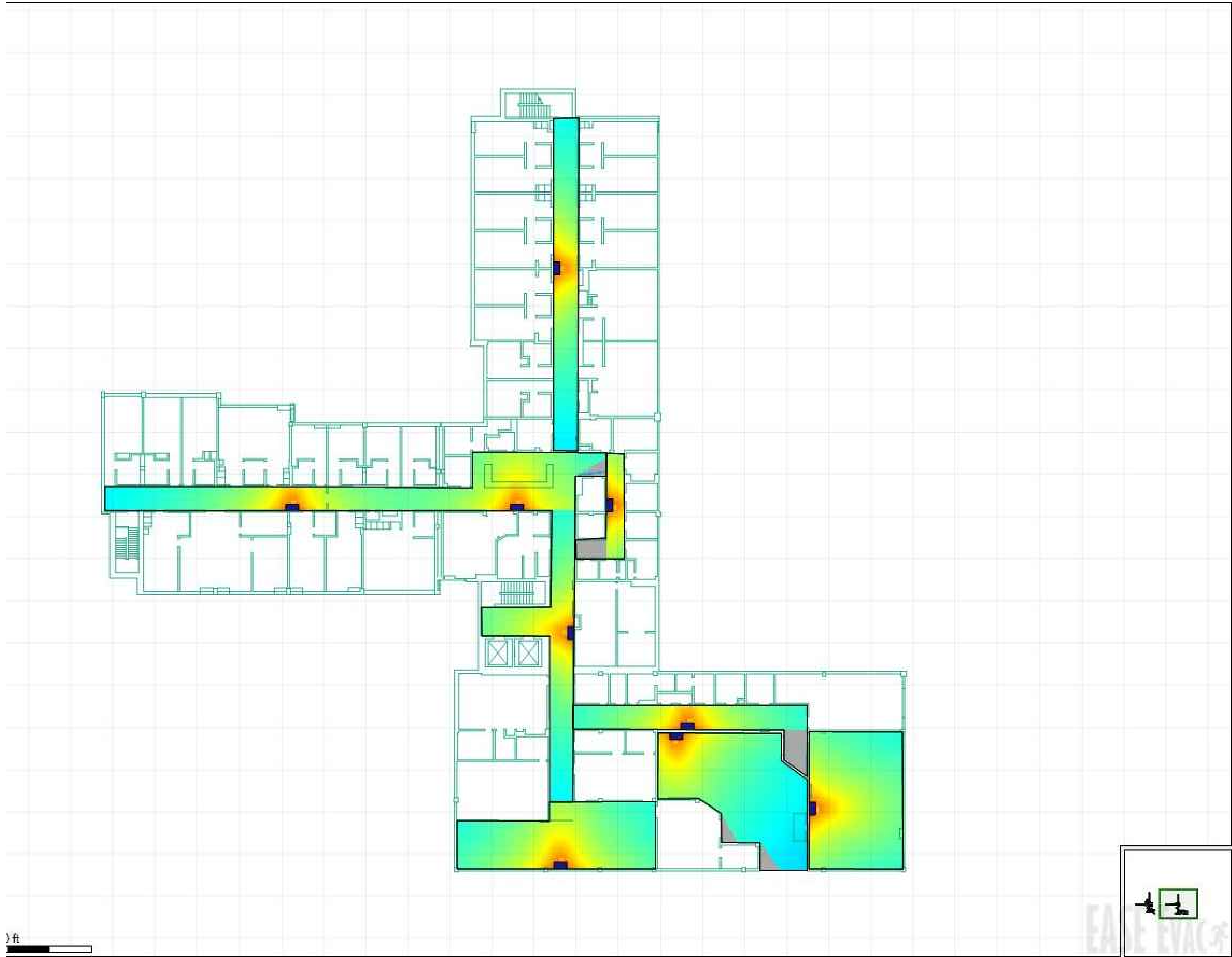
DATE  
05-23-16

103F4.1

DRAWING NO X OF X

**Tritek**  
Fire & Security, LLC  
The Integration of Technology and Life Safety

6 WOODCROSS DRIVE  
COLUMBIA, SC 29212  
PHONE: 803-407-0747  
FAX: 803-407-0779



1 EXISTING SOUND MAPPING - 2ND FLOOR  
F4.0 SCALE: 1/8" = 1'-0"

**Tritek**  
Fire & Security, LLC  
The Integration of Technology and Life Safety

6 WOODCROSS DRIVE  
COLUMBIA, SC 29212  
PHONE: 803-407-0747  
FAX: 803-407-0779

NURSING HOME CARE UNIT - BUILDING 103  
V.A. MEDICAL CENTER  
COLUMBIA, SOUTH CAROLINA

EXIST. SOUND MAPPING PLAN - 2ND FLOOR

|             |
|-------------|
| DRAWN BY:   |
| JA          |
| CHECKED BY: |
| ES          |
| 12429       |
| DATE        |
| 05-23-16    |





1 NEW SOUND MAPPING - 2ND FLOOR  
F4.0 SCALE: 1/8" = 1'-0"

**Tritek**  
Fire & Security, LLC  
The Integration of Technology and Life Safety

NURSING HOME CARE UNIT - BUILDING 103  
V.A. MEDICAL CENTER  
COLUMBIA, SOUTH CAROLINA

NEW SOUND MAPPING PLAN - 2ND FLOOR

DRAWN BY:  
JA

CHECKED BY:  
ES

12429

DATE  
05-23-16

103F4.3

DRAWING NO X OF X