



Louisville 6s Reheats – RFIs 1 thru 18

Question: 1 - Is this a tax-exempt project?

Government response:

No

Question: 2 - MP102, note 3

No such drawing exists in solicitation?

Paradigm response:

Refer to P-101.

Question: 3 - Heat exchanger and components

Will a piping diagram be issued? The solicitation contains an instrumentation diagram, but nothing for piping. It's not clear where/how all system components are installed and integrated. (e.g. Air Separator, water PRV, Expansion Tank, etc.). A P&ID would be helpful to fully understand the system.

Paradigm response:

Refer to Specification 23 22 13 – 2.7 for the steam to water heat exchanger / package. Section 23 21 13 will be re-issued to cover the hydronic specialties.

Question: 4 - Steam traps

It appears there are no traps on this scope of work besides what's on the Heat Exchangers themselves. Please advise.

Paradigm response:

Yes, that is correct, unless end of main or other traps are required due to piping installation.

Question: 5 - DDC controls

No specs or details were provided for the Flow Elements on the coil detail drawings (MP501). Does the FE output to the ECC?

Paradigm response:

The flow element in this case is the balancing valve for setting coil water flow. Refer to specification 23 21 13.

Question: 6 - Condensate

Is Copper piping being the only allowed pipe material for condensate located in ceilings.

Paradigm response:

Schedule 40 A106 Grade B Seamless is acceptable .

Question: 7 & 8 - ICRA

GI103 shows the containment wall to be a hard wall with door, but the drawings state this is a low risk project which would indicate a plastic barrier is sufficient. Please confirm if the hard wall from floor to concrete decking is required or if plastic barrier is sufficient.

GI104, same as above. Please confirm with drywall or plastic containment walls are required.

Paradigm response:

Intent is a hard wall for the duration of the project.

Question: 9 - Storage Space

Is there a place on the 7th floor where furniture from 705 and 740 can be placed during construction or does it need to be removed from the building and stored in a storage container?

Government response:

Will be stored in VA warehouse.

Question: 10 - Fire Alarm

Who is the fire alarm contractor for the VA?

Government response:

Simplex.

Question: 11 - Work Hours

Will any scope of work require off hours or can the entire project be performed during normal hours?

Government response:

The only off hours work will be during planned outages.

Question: 12, 13 & 14 - Lighting power

EL101 indicates lighting in corridor and west side rooms shall be connected to emergency power lighting. Are existing lights connected to emergency power or will new circuits need to be ran to these lights?

Paradigm Response: Refer to keyed Notes No. 1 and No.2 on drawing EL101.

Same as above, where is the emergency power panel located?

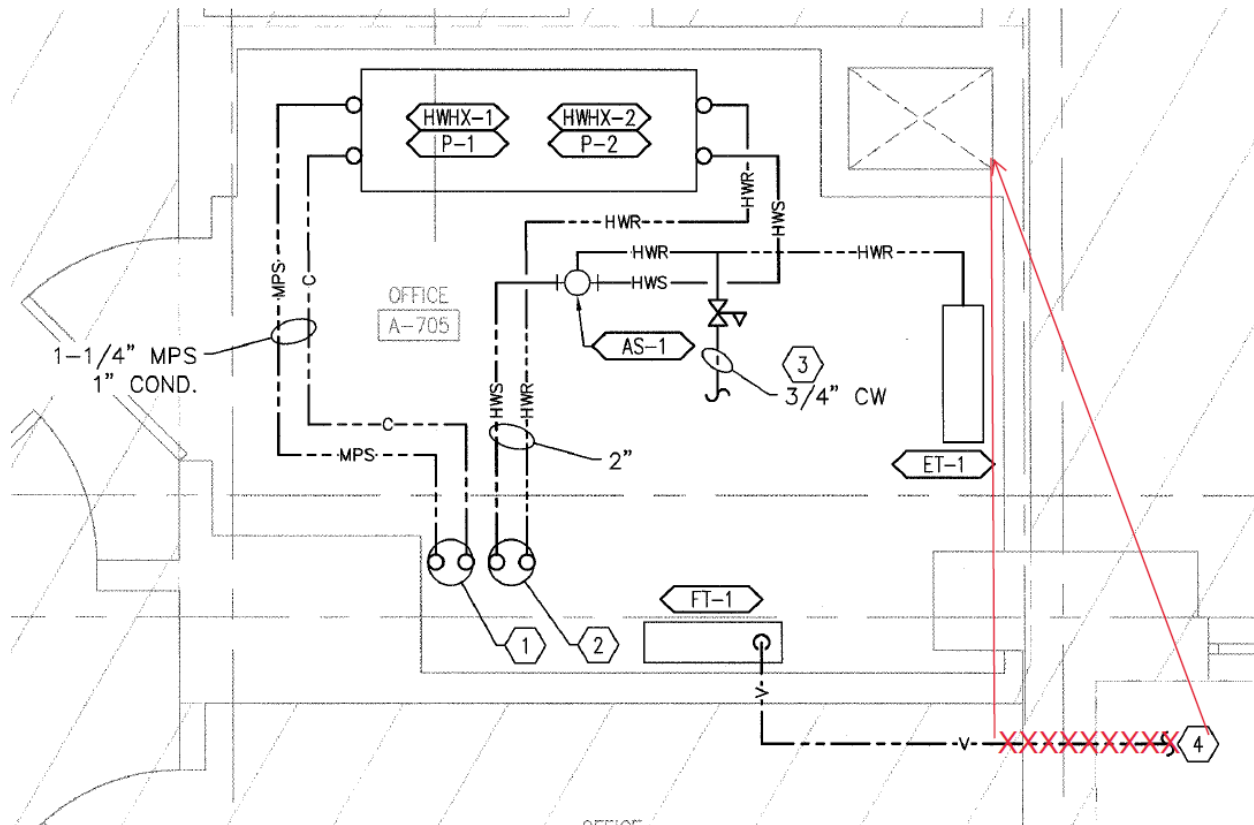
Paradigm Response: Refer to keyed Notes No. 1 and No.2 on drawing EL101.

EL102, same as question 12 and 13.

Paradigm response: Refer to Keyed Notes No. 2 and No. 3 on drawing EL102.

Question: 15 - Bid documents show medium pressure steam going to heat exchangers. There will have to be steam pressure reducing valve station and a safety relief valve vented through the roof. Please provide sizing and details for the valve station and routing location for relief vent.

Paradigm response: The Steam to Water Heat exchanger schedule notates that the control valve should accept 40 PSIG steam. A reducing valve station should not be necessary. Confirm pressure available with VAMC and coordinate with equipment. The safety relief vents should be routed in the chase adjacent to the new mechanical room thru the 8th floor and to the roof directly above.



Question: 16 - In order to do a proper estimate, we need a steam schematic showing piping sizes and details from heat exchangers and any required connections to the flash tanks.

Paradigm response: The intent is that the heat exchanger be a factory package unit. Piping arrangement and sizing will be the responsibility of the manufacturer. Should the flash tank be separate from the factory package, the piping shall be sized for the condensate from the manufacturer's heat exchanger package.

Question: 17 - In order to price flash tank we will need size/capacity of existing condensate pump. Please provide this information.

Paradigm response: There is no existing condensate pump. The intent is to extend condensate to gravity mains.

Question: 18 - The flash tank detail shows us tying in a gravity return to the condensate pump, where is this tie-in located?

Paradigm response: There is no existing condensate pump. The intent is to extend condensate to gravity mains. The condensate mains are existing on the 6th floor.