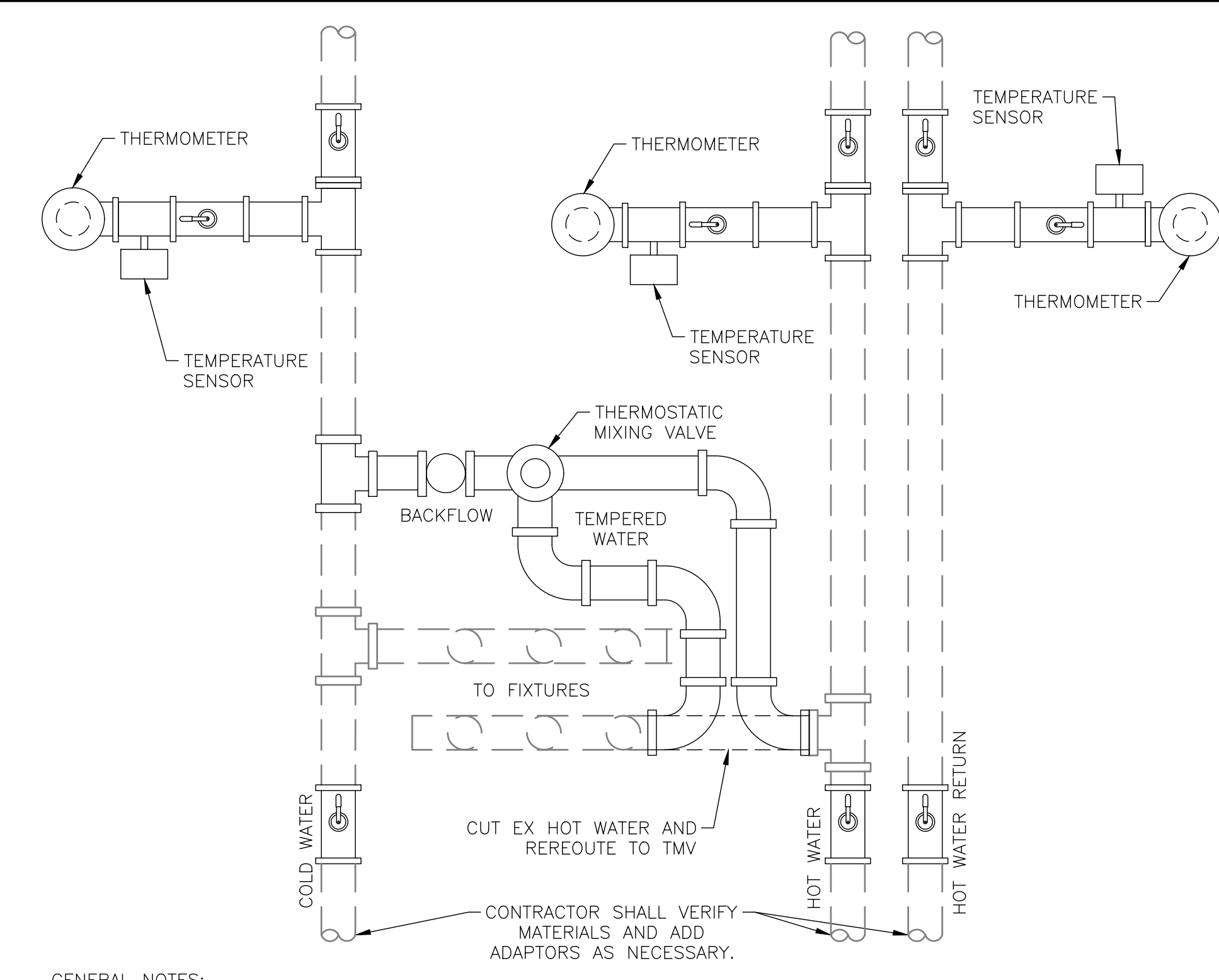


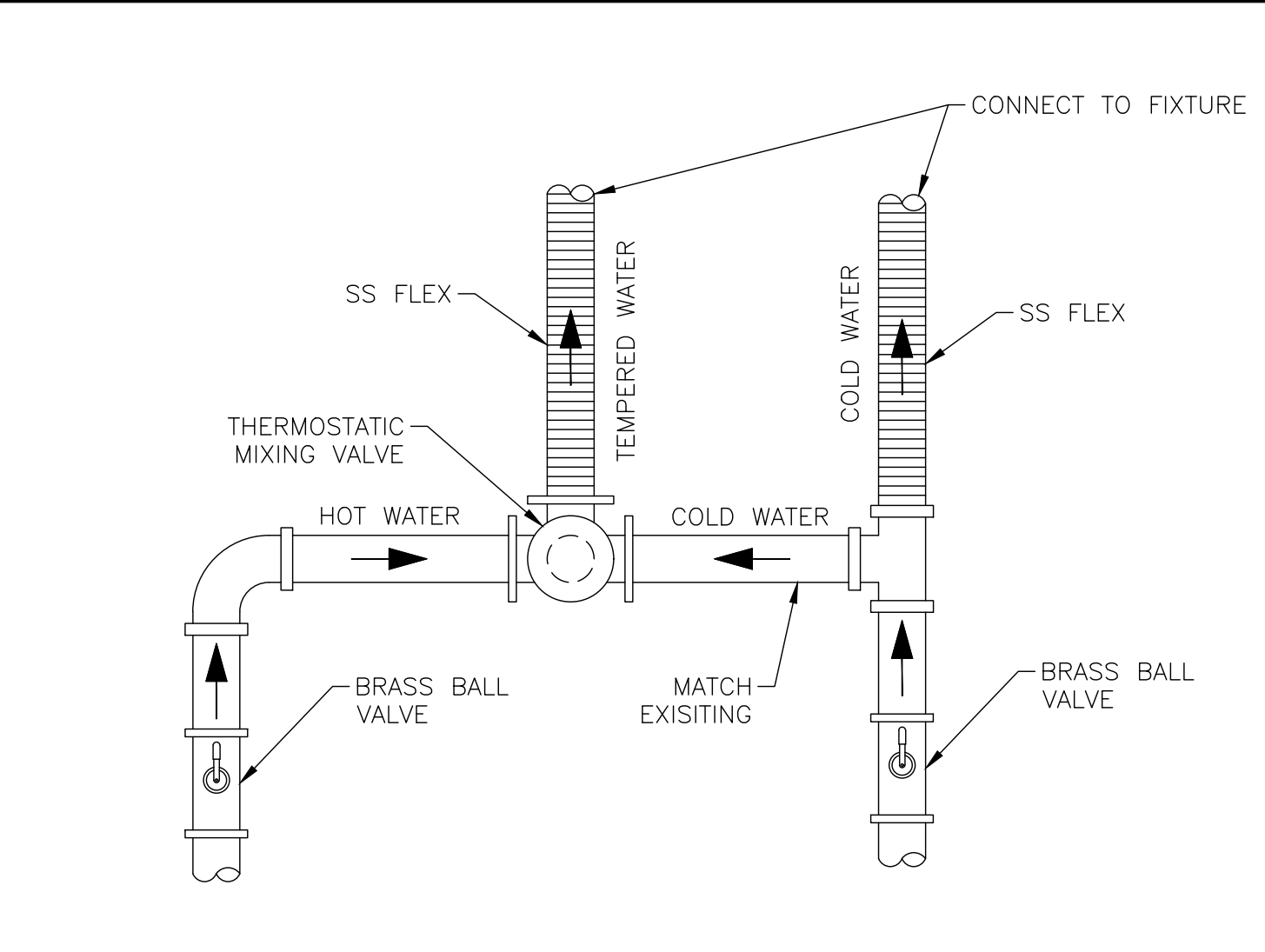
three inches = one foot
 one and one half inches = one foot
 one inch = one foot
 three quarters inch = one foot
 one half inch = one foot
 three eighths inch = one foot
 one quarter inch = one foot
 one eighth inch = one foot
 one sixteenth inch = one foot



GENERAL NOTES:

1. ALL CHEMICAL AND PRESSURE MONITORS SHALL CONNECT TO TELEMETRY SYSTEM.
2. TEMPERATURE SENSORS SHALL CONNECT TO TEMPERATURE GATEWAY WHICH SHALL CONNECT TO TELEMETRY.
3. PIPE MATERIAL AND SIZE SHALL MATCH EXISTING.
4. MOUNT TEMPERATURE GATEWAY AND TELEMETRY PER DETAIL 2/D-1. (WITHOUT THE CHEMICAL MONITORING EQUIPMENT) MOUNTING BOARD SIZE MAY VARY.
5. SEE DETAIL 6/D-2, FOR EXISTING PIPE SIZES AND MATERIALS.

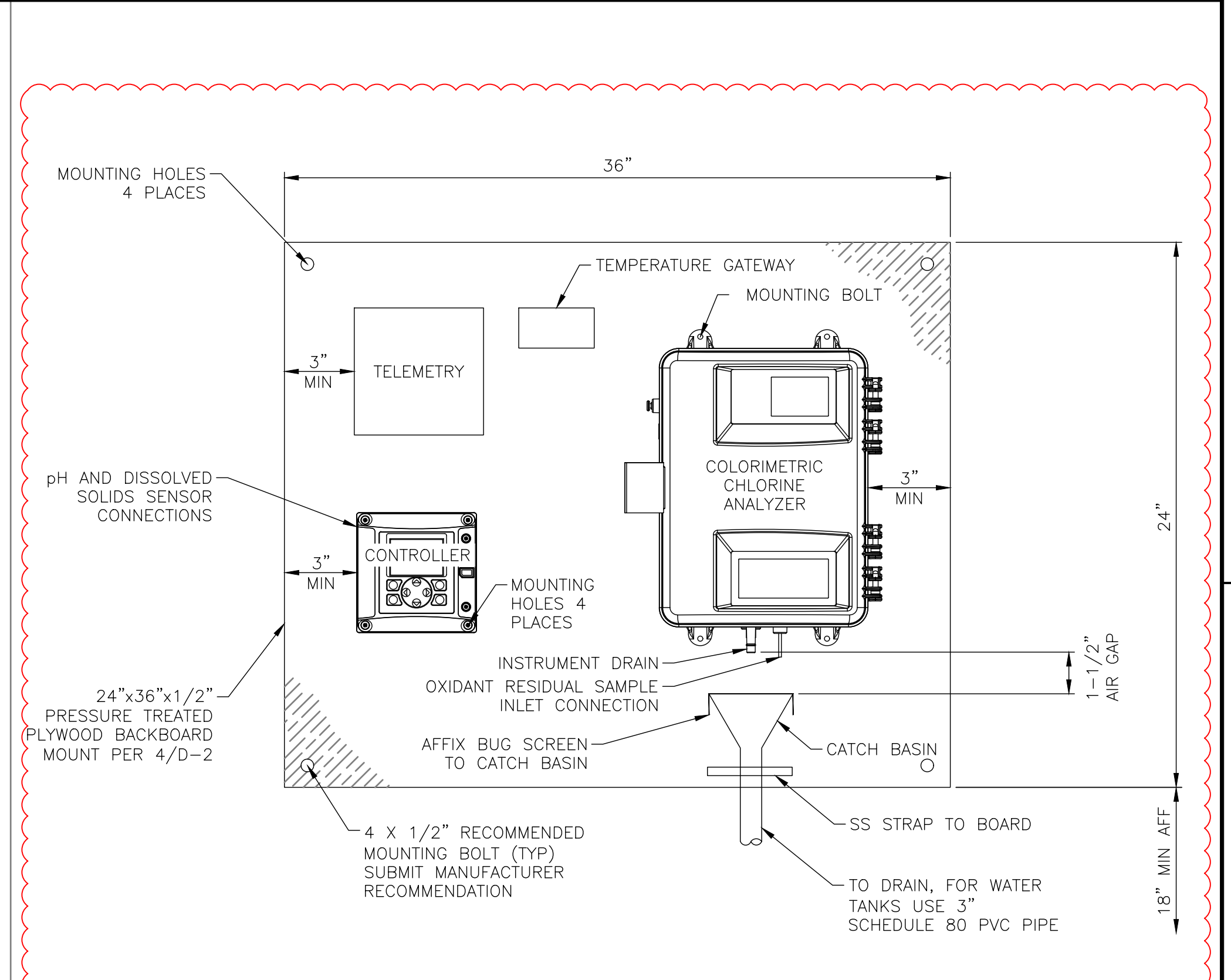
TYPICAL PLUMBING CHASE MOCK UP WITH TEMPERATURE MEASUREMENT
 NOT TO SCALE



GENERAL NOTES:

1. THERMOSTATIC MIXING VALVE (TMV) IS THE PREFERRED SCALD PROTECTION METHOD. IF PIPES ARE EXPOSED SUCH AS BELOW SINK OR WITHIN ACCESSIBLE PLUMBING CHASE, CONTRACTOR SHALL INSTALL TMV. IF PIPES ARE NOT EXPOSED OR ACCESSIBLE SUCH AS WITHIN WALLS AS IDENTIFIED IN THIS PACKAGE, CONTRACTOR SHALL INSTALL ANTI-SCALD DEVICE.

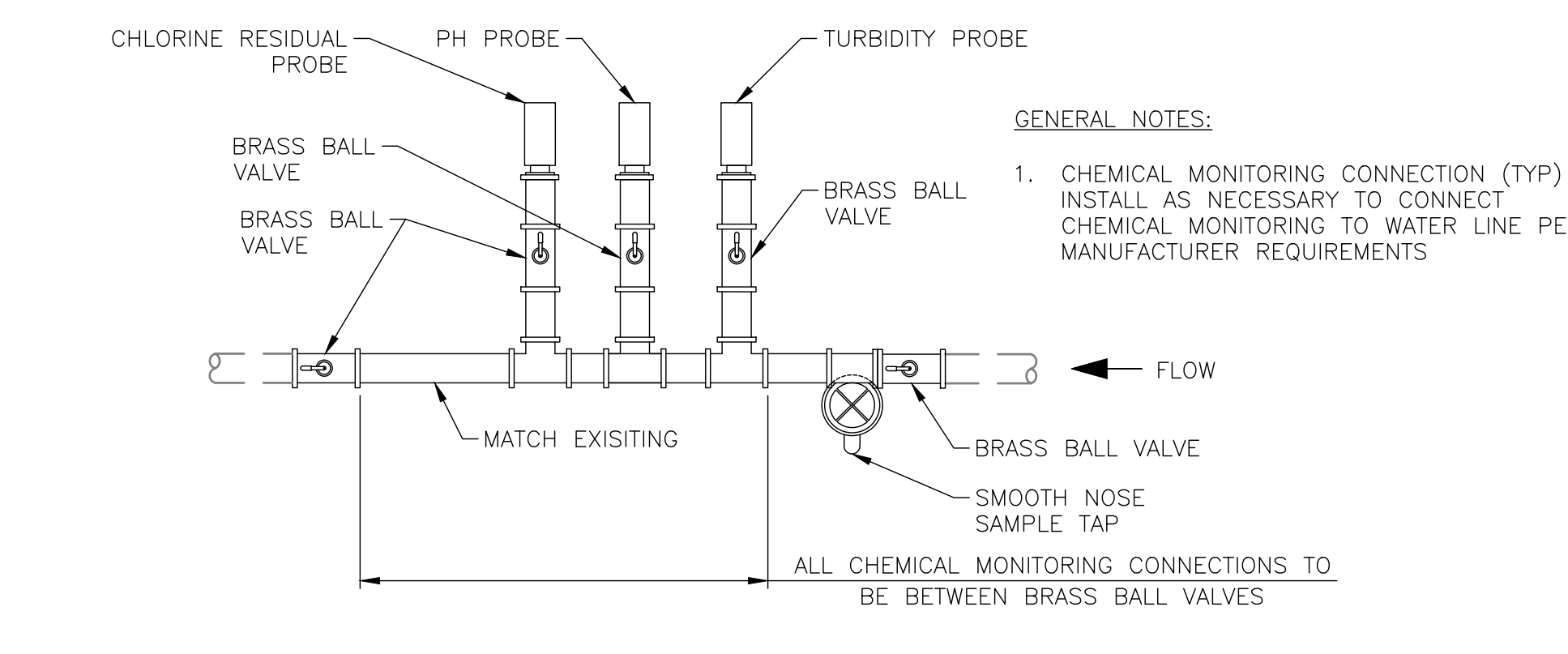
TYPICAL MIXING VALVE INSTALL UNDER SINK
 NOT TO SCALE



GENERAL NOTES:

1. WATER DISCHARGE SHALL HAVE A 1-1/2" AIR GAP PER PA CODE. USE A CATCH BASIN THAT PREVENTS SPILLS OR SPLASHING.

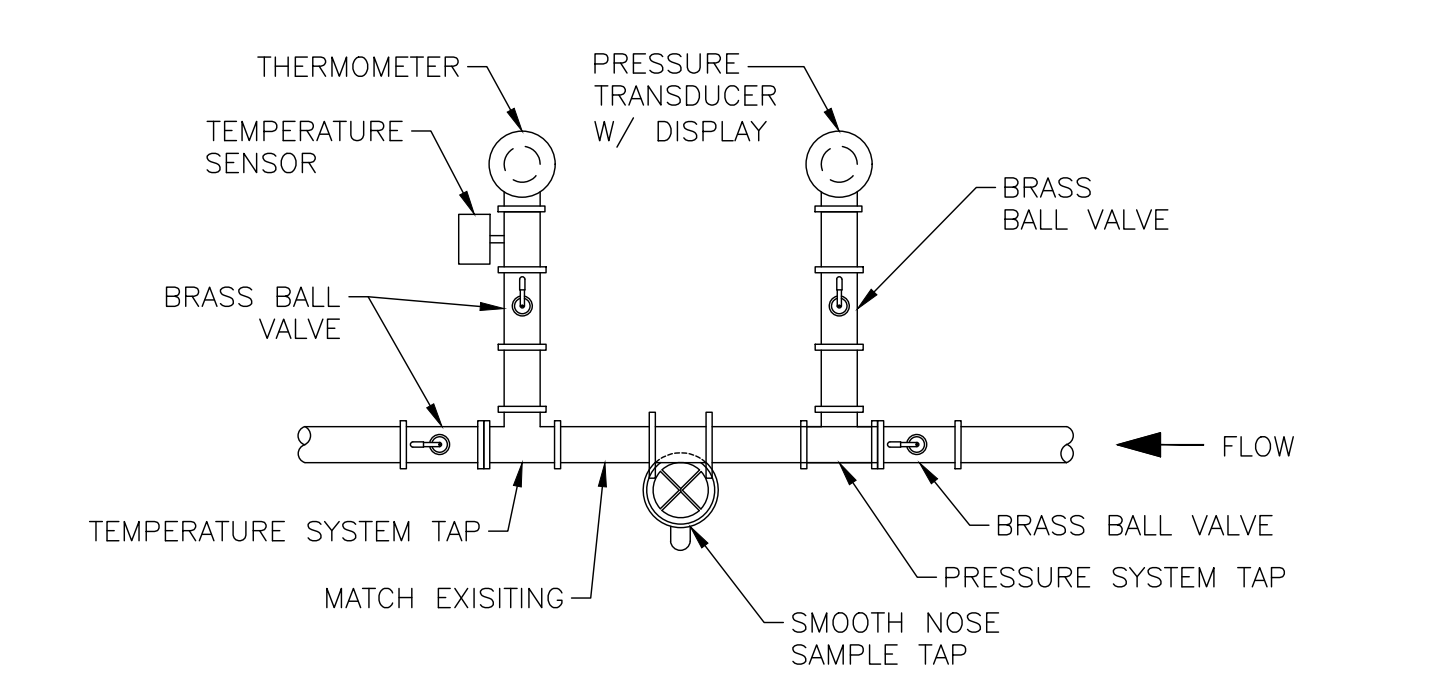
CHEMICAL MONITORING SYSTEM
 NOT TO SCALE



GENERAL NOTES:

1. CHEMICAL MONITORING CONNECTION (TYP) INSTALL AS NECESSARY TO CONNECT CHEMICAL MONITORING TO WATER LINE PER MANUFACTURER REQUIREMENTS

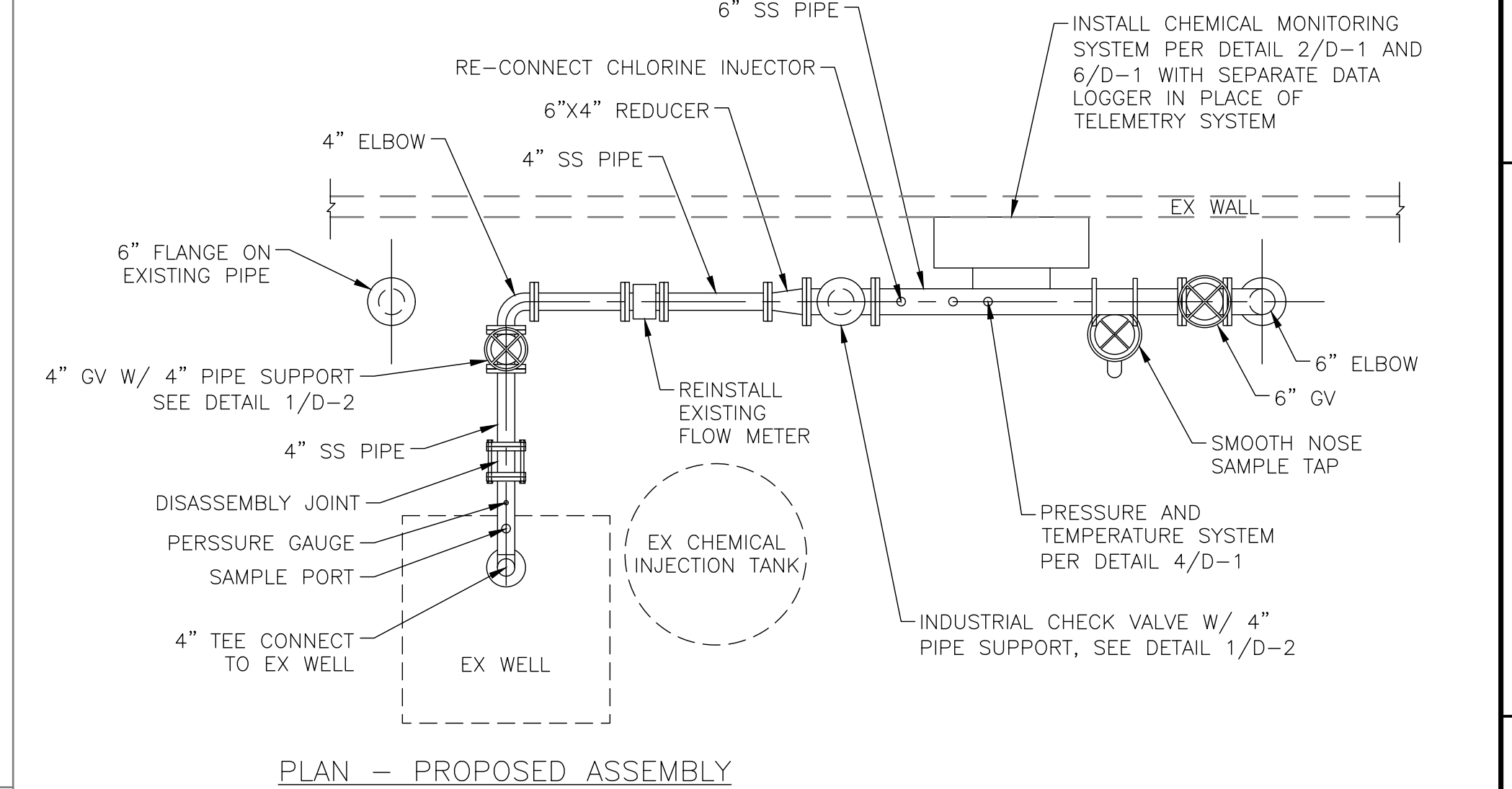
TYPICAL CHEMICAL MONITORING SYSTEM TAP
 NOT TO SCALE



GENERAL NOTES:

1. CONTRACTOR SHALL VERIFY MATERIALS AND ADD ADAPTORS AS NECESSARY.
2. CONTRACTOR SHALL VERIFY HOT WATER SUPPLY AND HOT WATER RETURN PIPES AND LABEL LINE APPROPRIATELY AT A LOCATION NO FARTHER THAN 24" (MEASURED ALONG LENGTH OF PIPE) FROM THERMOSTAT. LABEL SHALL BE MADE VISIBLE AND SHALL READ "HW SUPPLY" FOR HOT WATER SUPPLY PIPES AND "HW RETURN" FOR HOT WATER RETURN PIPES.
3. CONTRACTOR SHALL REMOVE AND REPLACE INSULATION AND/OR INSTALL INSULATION AS NECESSARY WITHIN PIPE CHASE. PIPE LABELS SHALL BE ADHERED TO EXTERIOR OF PIPE INSULATION.
4. COPPER JOINTS MAY BE SOLDERED OR PUSH-ON JOINTS IN ACCORDANCE WITH SPECIFICATIONS.

TYPICAL TEMPERATURE AND PRESSURE SYSTEM TAP
 NOT TO SCALE

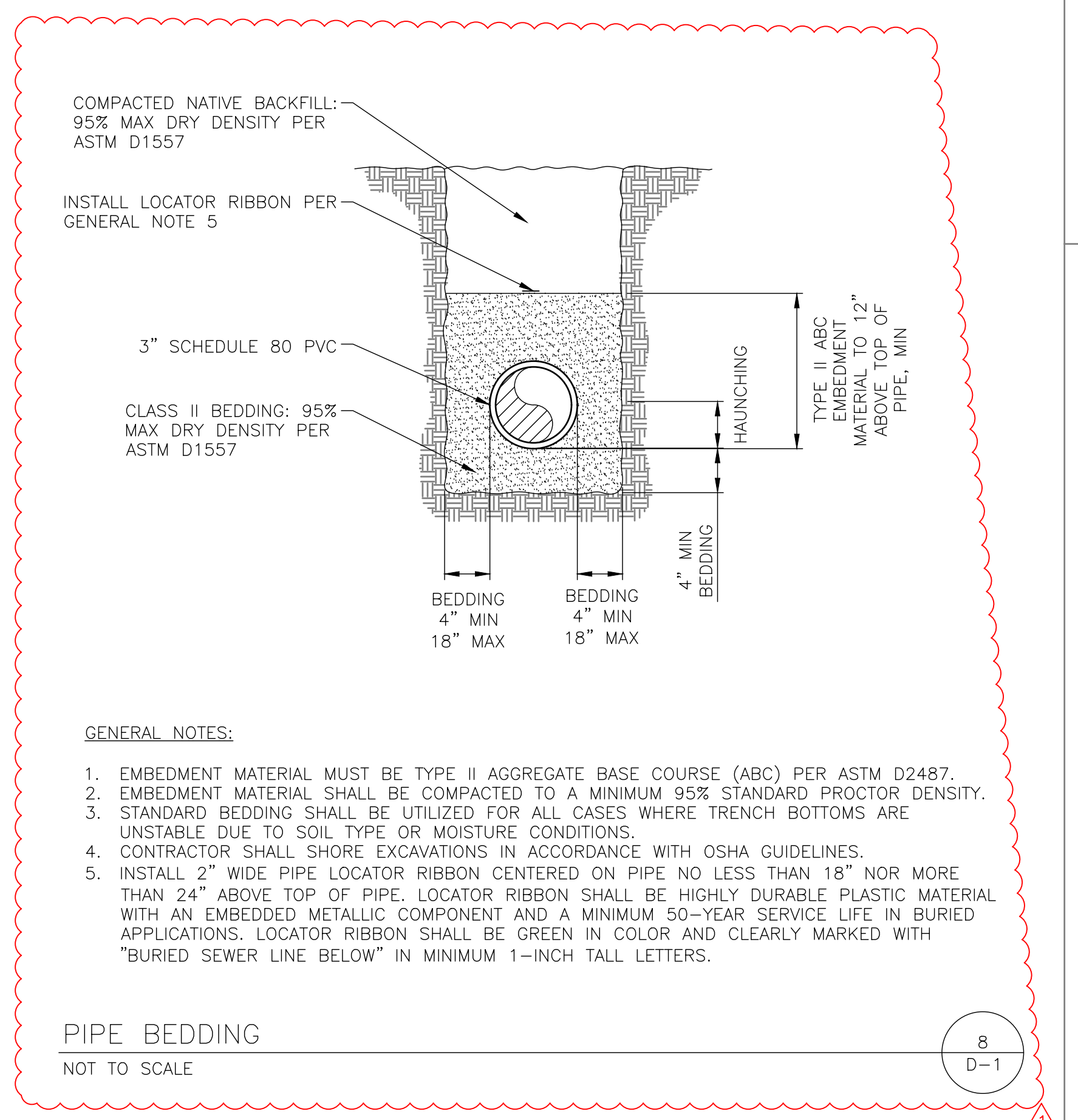


PLAN - PROPOSED ASSEMBLY

GENERAL NOTES:

1. REMOVE AND DISPOSE OF ALL EX MATERIALS SHOWN THAT ARE FULLY ABOVE GROUND. DO NOT REUSE.
2. NO BENDS OR RESTRICTIONS SHALL OCCUR IN LINE WITHIN 20" EITHER SIDE OF FLOW METER.
3. CONTRACTOR SHALL VERIFY PIPES/FITTINGS/APPERTENANCES TO BE RELOCATED ARE IN ACCEPTABLE CONDITION PRIOR TO REINSTALLATION. PIPES/FITTINGS/APPERTENANCES THAT ARE NOT IN ACCEPTABLE WORKING CONDITION SHALL NOT BE USED AND SHALL BE REPLACED WITH NEW TO MATCH DESIGN PARAMETERS OF EXISTING.
4. CONTRACTOR SHALL RECONNECT CHEMICAL INJECTION USING EXISTING EQUIPMENT.
5. REMOVE EXISTING CONCRETE PIPE SUPPORT FROM UNDER EXISTING PIPE.

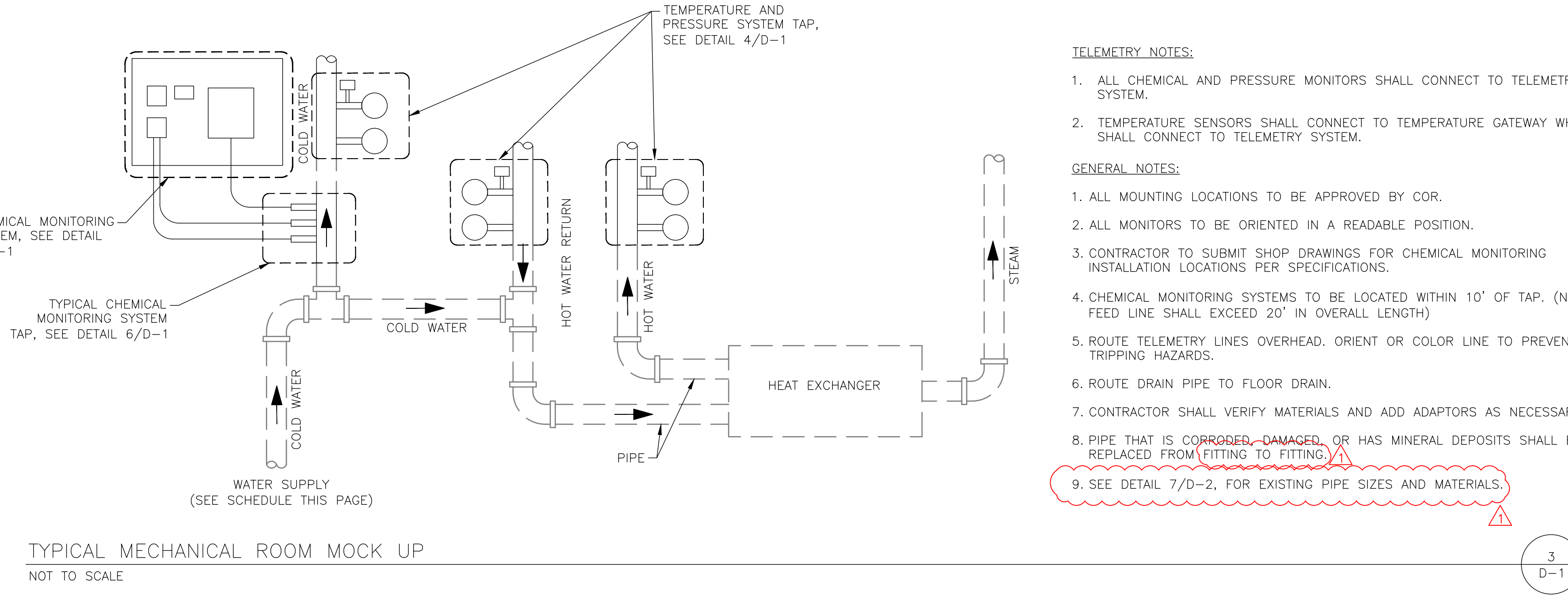
WELLHEAD CHEMICAL MONITOR ASSEMBLY
 3/8" = 1'-0"



GENERAL NOTES:

1. EMBEDMENT MATERIAL MUST BE TYPE II AGGREGATE BASE COURSE (ABC) PER ASTM D2487.
2. EMBEDMENT MATERIAL SHALL BE COMPACTED TO A MINIMUM 95% STANDARD PROCTOR DENSITY.
3. STANDARD BEDDING SHALL BE UTILIZED FOR ALL CASES WHERE TRENCH BOTTOMS ARE UNSTABLE DUE TO SOIL TYPE OR MOISTURE CONDITIONS.
4. CONTRACTOR SHALL SHORE EXCAVATIONS IN ACCORDANCE WITH OSHA GUIDELINES.
5. INSTALL 2" WIDE PIPE LOCATOR RIBBON CENTERED ON PIPE NO LESS THAN 18" NOR MORE THAN 24" ABOVE TOP OF PIPE. LOCATOR RIBBON SHALL BE HIGHLY DURABLE PLASTIC MATERIAL WITH AN EMBEDDED METALLIC COMPONENT AND A MINIMUM 50-YEAR SERVICE LIFE IN BURIED APPLICATIONS. LOCATOR RIBBON SHALL BE GREEN IN COLOR AND CLEARLY MARKED WITH "BURIED SEWER LINE BELOW" IN MINIMUM 1-INCH TALL LETTERS.

PIPE BEDDING
 NOT TO SCALE



TYPICAL MECHANICAL ROOM MOCK UP
 NOT TO SCALE

TELEMETRY NOTES:

1. ALL CHEMICAL AND PRESSURE MONITORS SHALL CONNECT TO TELEMETRY SYSTEM.
2. TEMPERATURE SENSORS SHALL CONNECT TO TEMPERATURE GATEWAY WHICH SHALL CONNECT TO TELEMETRY SYSTEM.

GENERAL NOTES:

1. ALL MOUNTING LOCATIONS TO BE APPROVED BY COR.
2. ALL MONITORS TO BE ORIENTED IN A READABLE POSITION.
3. CONTRACTOR TO SUBMIT SHOP DRAWINGS FOR CHEMICAL MONITORING INSTALLATION LOCATIONS PER SPECIFICATIONS.
4. CHEMICAL MONITORING SYSTEMS TO BE LOCATED WITHIN 10' OF TAP. (NO FEED LINE SHALL EXCEED 20' IN OVERALL LENGTH)
5. ROUTE TELEMETRY LINES OVERHEAD, ORIENT OR COLOR LINE TO PREVENT TRIPPING HAZARDS.
6. ROUTE DRAIN PIPE TO FLOOR DRAIN.
7. CONTRACTOR SHALL VERIFY MATERIALS AND ADD ADAPTORS AS NECESSARY.
8. PIPE THAT IS CORRODED, DAMAGED, OR HAS MINERAL DEPOSITS SHALL BE REPLACED FROM FITTING TO FITTING.
9. SEE DETAIL 7/D-2, FOR EXISTING PIPE SIZES AND MATERIALS.

Revisions	Date
MODIFIED DETAILS	08/07/17

CONSULTANTS:

HENDERSON ENGINEERS
 5555 REDWOOD STREET, SUITE 201
 LAS VEGAS, NV 89118
 TEL (702) 697-2187 FAX (702) 697-2188
 www.hei-eng.com

ENGINEERS:

JONATHAN D. TULL
 REGISTERED PROFESSIONAL ENGINEER
 PE#81697

ENGINEERS:

S&B CHRIST CONSULTING, LLC
 OPS RESEARCH & CIVIL/ENV ENGINEERING
 8485 WEST SUNSET ROAD, SUITE 106
 LAS VEGAS, NV 89113
 OFFICE: (702) 202-6004 SBCHRISTCONSULTING.COM

Drawing Title
DETAILS 1

Approved Project Director
APPROVED BY:
TITLE:
STATION:

Project Title
VAMC COATESVILLE
 WATER SYSTEM CHEMICAL MONITORING & SCALD PROTECTION

Project Number
 542-13-115

Building Number
 N/A

Location
 VAMC COATESVILLE, PA

Date
 2017 AUG 8

Checked
 BJC

Drawn
 DMD

Drawing Number
D-1

Sht. 21 of 41

Office of Construction and Facilities Management

Department of Veterans Affairs