

three inches = one foot
 one and one half inches = one foot
 one inch = one foot
 three quarters inch = one foot
 one half inch = one foot
 three eighths inch = one foot
 one quarter inch = one foot
 one eighth inch = one foot

MECHANICAL ROOM PIPE SIZES AND MATERIALS

BUILDING	ROOM	SYSTEM	DIAMETER	MATERIAL
1	B11	COLD	1.9"	CAST IRON
		HOT	2.4"	CAST IRON
		HOT RETURN	3/4"	COPPER
2	B14C	COLD	1.5"	CAST IRON
		HOT	2"	CAST IRON
		HOT RETURN	3/4"	COPPER
4	B07G	COLD	2"	COPPER
		HOT	1 1/2"	COPPER
		HOT RETURN	3/4"	COPPER
6	B09	COLD	2"	COPPER
		HOT	2 1/4"	COPPER
		HOT RETURN	1"	COPPER
7	SUBBASEMENT	COLD	1 1/2"	COPPER
		HOT	1 1/2"	COPPER
		HOT RETURN	3/4"	COPPER
8	B10	COLD	1 1/2"	COPPER
		HOT	1 1/2"	COPPER
		HOT RETURN	3/4"	COPPER
9	B10	COLD	1.6"	CAST IRON
		HOT	1.5"	COPPER
		HOT RETURN	0.9"	COPPER
10	B01	COLD	1 1/2"	COPPER
		HOT	1"	COPPER
		HOT RETURN	3/4"	COPPER
18	BASEMENT	COLD	1"	STEEL
		HOT	3/4"	COPPER
		HOT RETURN	3/4"	COPPER
39	212	COLD	3.5"	CAST IRON
		HOT	1.8"	COPPER
		HOT RETURN	1.6"	COPPER
59	B10	COLD	3"	CAST IRON
		HOT	1"	COPPER
		HOT RETURN	1.5"	COPPER
138A	178	COLD	1 1/2"	COPPER
		HOT	1.8"	COPPER
		HOT RETURN	1"	COPPER
138E	111	COLD	1 1/2"	COPPER
		HOT	1 1/4"	COPPER
		HOT RETURN	1 1/2"	COPPER

GENERAL NOTES:

- THIS SCHEDULE IDENTIFIES THE SIZE AND MATERIAL OF THE EXISTING LINES THAT WILL BE MODIFIED TO INCLUDE TEMPERATURE AND CHEMICAL MONITORING.
- MATERIAL AND SIZES ARE BASED ON VISUAL INSPECTION OF OUTSIDE DIAMETER MEASUREMENT OR MARKINGS ON THE PIPE. CONTRACTOR SHALL NOT RELY ON THIS INFORMATION AND SHALL FIELD VERIFY ALL MATERIALS AND SIZES.

EXISTING PIPING FOR MECHANICAL ROOM TEMPERATURE AND CHEMICAL MONITORING
NOT TO SCALE

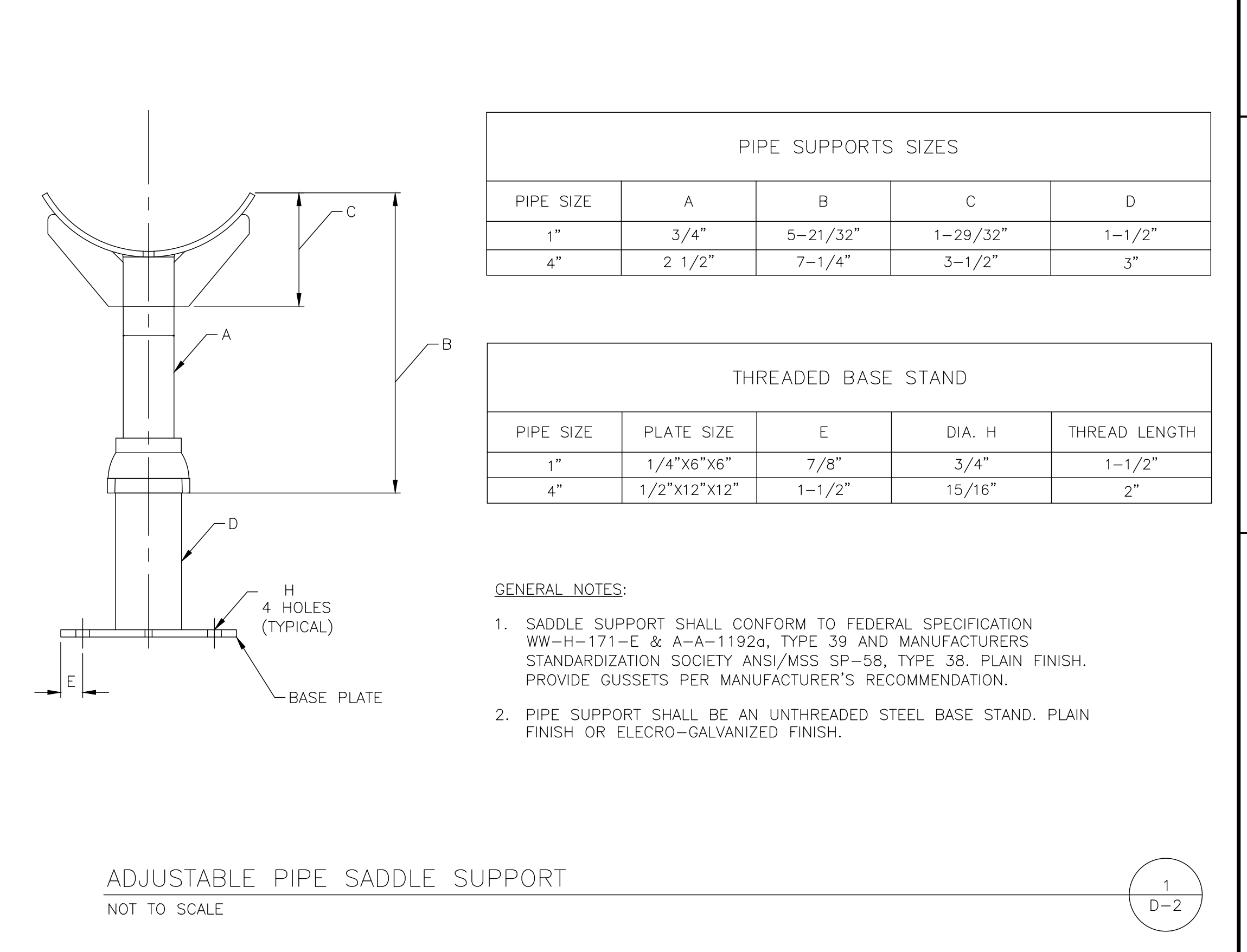
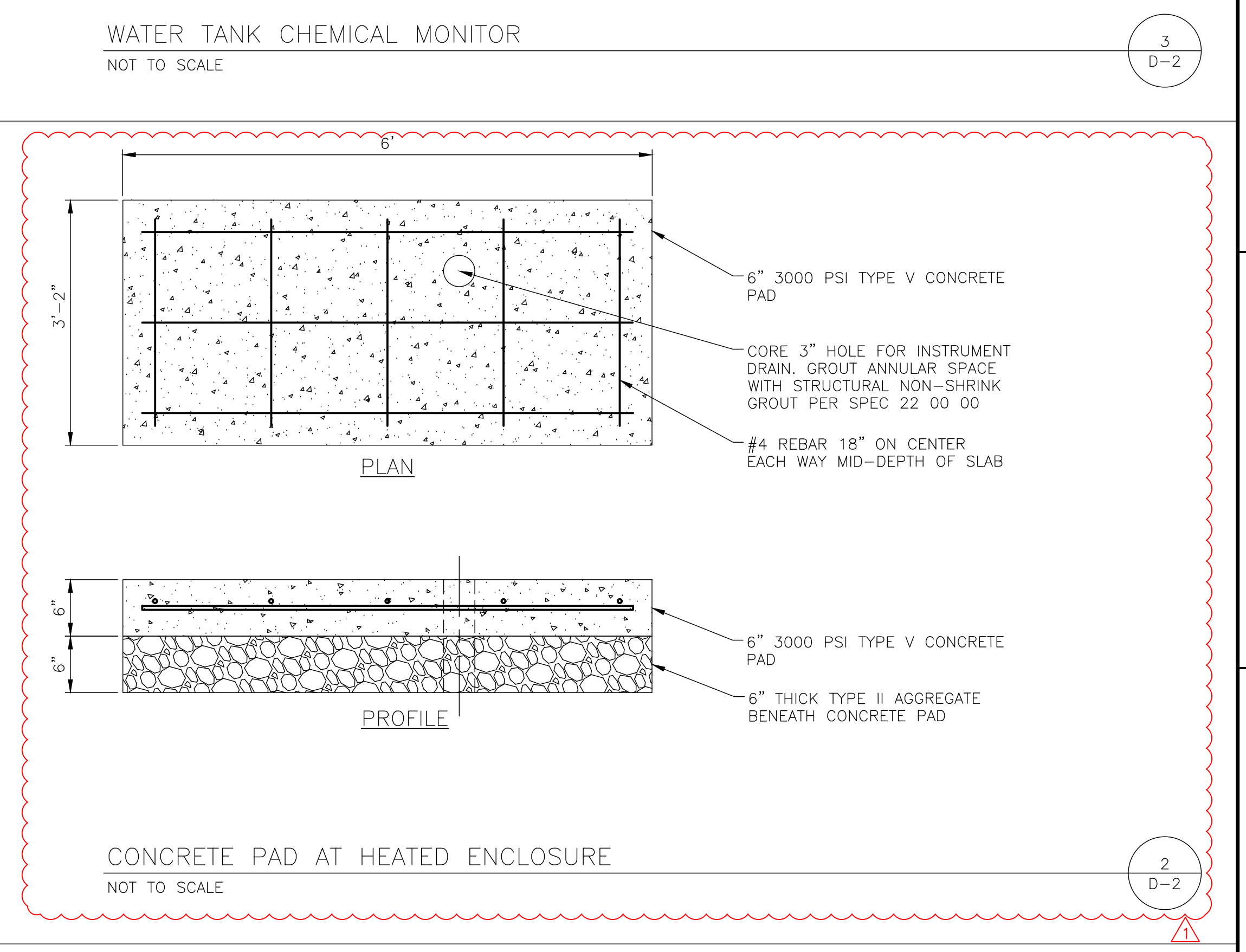
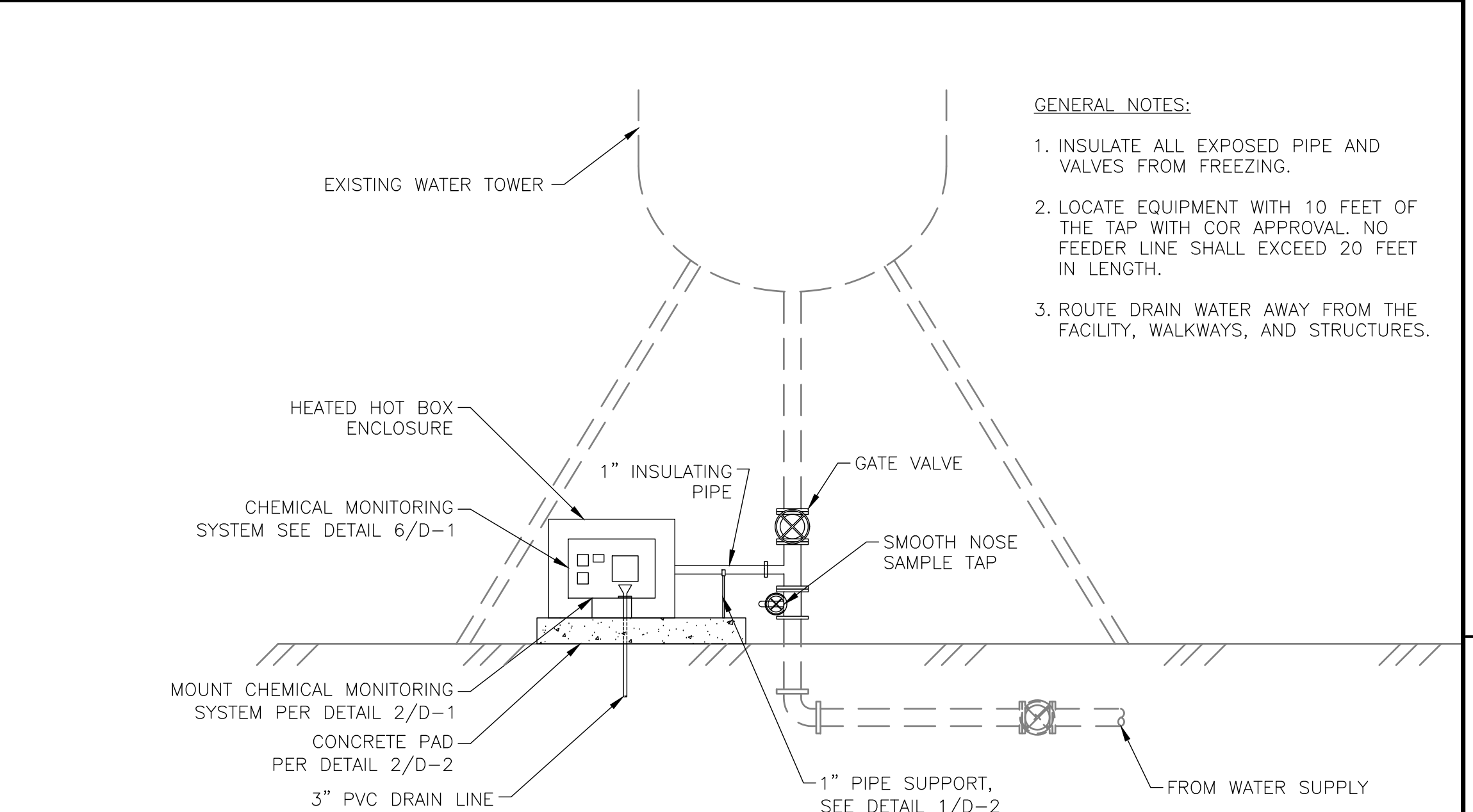
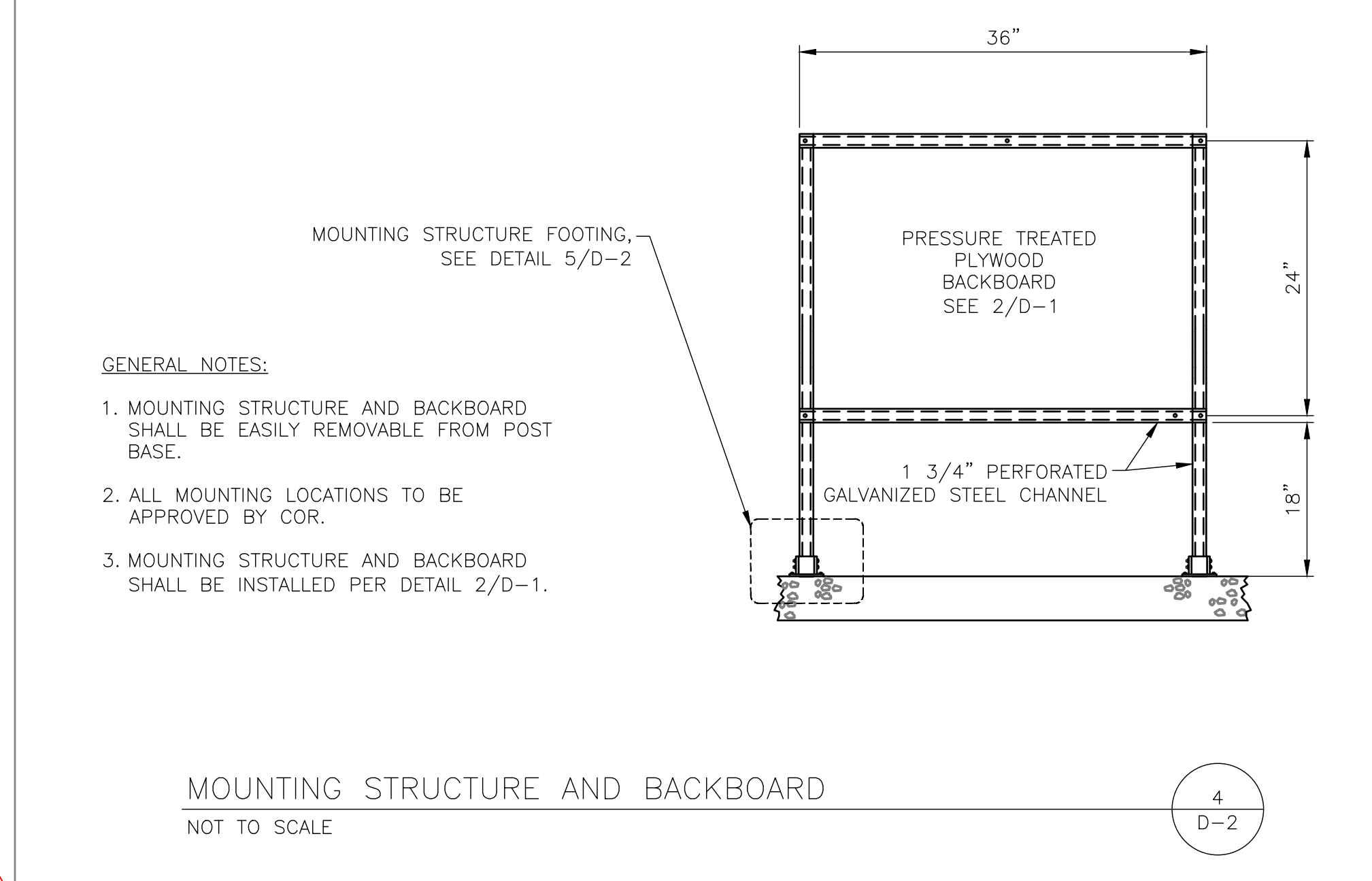
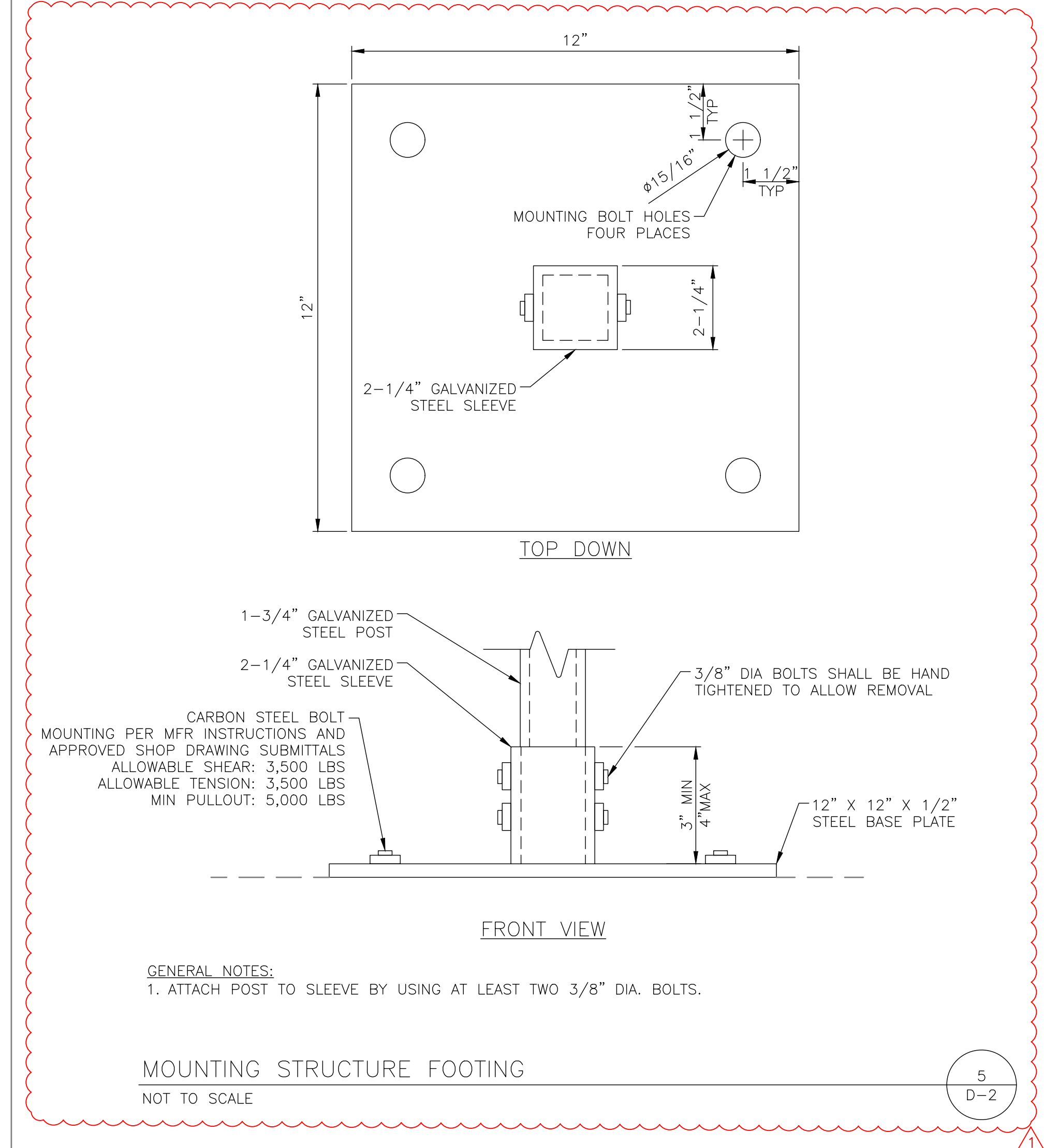
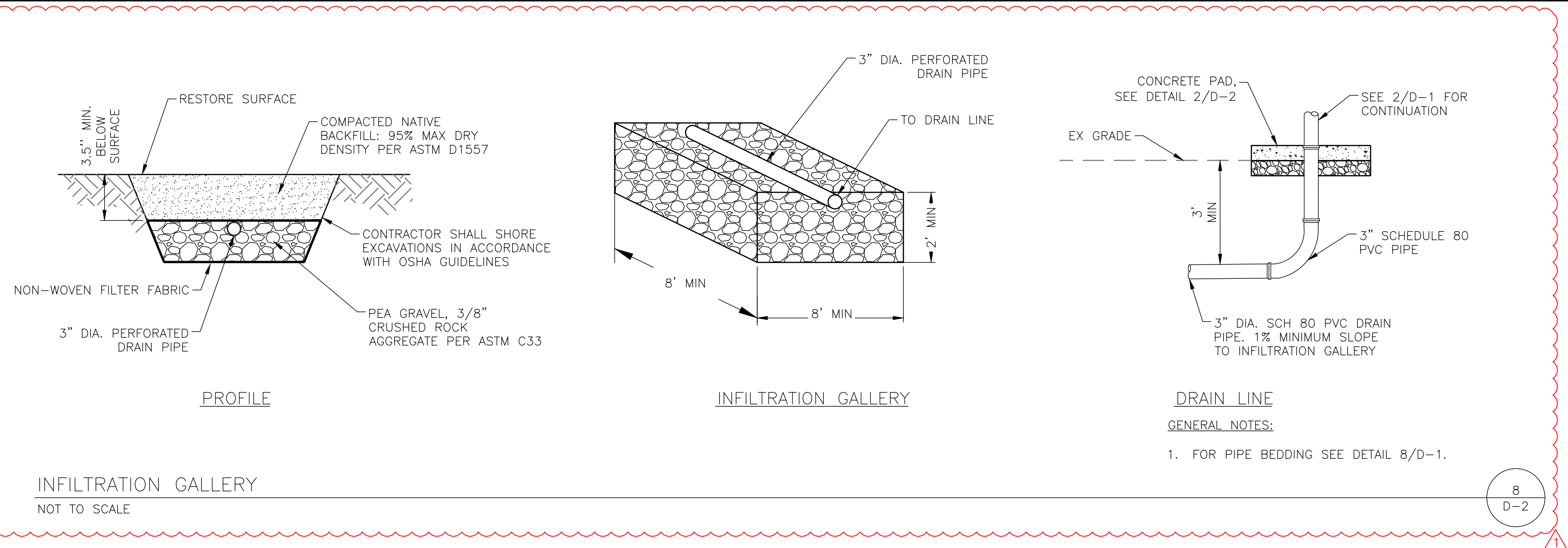
REMOTE LOCATION PIPE SIZES AND MATERIALS

BUILDING	ROOM	SYSTEM	DIAMETER	MATERIAL
1	232 (CHASE)	COLD	3/4" TO 1/2"	COPPER
		HOT	3/4" TO 1/2"	COPPER
		HOT RETURN	NONE	NONE
2	209 (CHASE)	COLD	3/4"	COPPER
		HOT	3/4"	COPPER
		HOT RETURN	1/2"	COPPER
4	208 (CHASE)	COLD	1 1/4"	COPPER
		HOT	1 1/4"	COPPER
		HOT RETURN	NONE	NONE
6	207 (CHASE)	COLD	3/4"	COPPER
		HOT	3/4"	COPPER
		HOT RETURN	1/2"	COPPER
7	242 (CHASE)	COLD	3/4"	COPPER
		HOT	3/4"	COPPER
		HOT RETURN	1/2"	COPPER
8	226A (CHASE)	COLD	3/4"	COPPER
		HOT	3/4"	COPPER
		HOT RETURN	1/2"	COPPER
9	RM 232 (CHASE)	COLD	3/4"	COPPER
		HOT	3/4"	COPPER
		HOT RETURN	3/4"	COPPER
18	(W-2) (KITCHEN)	COLD	1/2"	COPPER
		HOT	1/2"	COPPER
		HOT RETURN	NONE	NONE
39	212 (CHASE)	COLD	3/4"	COPPER
		HOT	3/4"	COPPER
		HOT RETURN	1/2"	COPPER
59	209 (KITCHEN)	COLD	3/4"	COPPER
		HOT	3/4"	COPPER
		HOT RETURN	1/2"	COPPER
138B	205 (BREAK ROOM)	COLD	3/4"	COPPER
		HOT	3/4"	COPPER
		HOT RETURN	1/2"	COPPER

GENERAL NOTES:

- THIS SCHEDULE IDENTIFIES THE SIZE AND MATERIAL OF THE EXISTING LINES THAT WILL BE MODIFIED TO INCLUDE TEMPERATURE AND CHEMICAL MONITORING.
- MATERIAL AND SIZES ARE BASED ON VISUAL INSPECTION OF OUTSIDE DIAMETER MEASUREMENT OR MARKINGS ON THE PIPE. CONTRACTOR SHALL NOT RELY ON THIS INFORMATION AND SHALL FIELD VERIFY ALL MATERIALS AND SIZES.

REMOTE LOCATION OF EXISTING PIPING FOR TEMPERATURE AND CHEMICAL MONITORING
NOT TO SCALE



MODIFIED DETAILS 08/07/17

Revisions	Date

CONSULTANTS:

HENDERSON ENGINEERS
5555 REDWOOD STREET, SUITE 201
LAS VEGAS, NV 89118
TEL (702) 697-2187 FAX (702) 697-2188
www.hei-eng.com

REGISTERED PROFESSIONAL ENGINEER
JONATHAN D. TULL
PE#81697
STATE OF NEVADA

ENGINEERS:

S&B CHRIST CONSULTING, LLC
OPS RESEARCH & CIVIL/ENV ENGINEERING
8485 WEST SUNSET ROAD, SUITE 106
LAS VEGAS, NV 89113
OFFICE: (702) 202-6004 SBCHRISTCONSULTING.COM

Drawing Title
DETAILS 2

Approved Project Director
APPROVED BY:
TITLE:
STATION:

Project Title
VAMC COATESVILLE
WATER SYSTEM CHEMICAL MONITORING & SCALD PROTECTION

Project Number
542-13-115

Building Number
N/A

Location
VAMC COATESVILLE, PA

Date
2017 AUG 8

Checked
BJC

Drawn
DMD

Drawing Number
D-2

Sht. 22 of 41

Office of Construction and Facilities Management

Department of Veterans Affairs