

- SHEET NOTES:**
- 1 CONTRACTOR SHALL DISCONNECT AND REMOVE EXISTING 8 ATS CONTROL WIRES OF 16 #12AWG, ALL THE WAY FROM (E) PARALLELING SWITCHGEAR "EHS1031A" THROUGH EXISTING EMERGENCY MANHOLE TO (E) PULL BOX ON CEILING OF BASEMENT IN BUILDING B100 CUT WIRES IN PULL BOX AND LEAVE ENOUGH LENGTH OF CONDUCTORS TO SPLICE WITH NEW FEEDER CONDUCTOR IN PULL BOX.
 - 2 EXISTING 2" IN DUCT BANK TO REMAIN. CONTRACTOR SHALL PROVIDE NYLON PULL WIRE IN CONDUIT.
 - 3 PROVIDE AND INSTALL NEW DUCT BANK WITH (10) 4" CONDUITS - (2) SPARE AND (3) 2" CONDUITS - (1) SPARE FROM END WALL OF TROUGH IN BUILDING 103A TO (E) NORTH WALL OF EMERGENCY MANHOLE.
 - 4 CONTRACTOR SHALL PROVIDE AND INSTALL NEW 8 SETS OF 16 #12AWG IN NEW 2" CONDUIT FROM NEW PARALLELING SWITCHGEAR "EHD1003A" THROUGH EMERGENCY MANHOLE AND IN (E) 2" CONDUIT FROM EMERGENCY MANHOLE TO (E) PULL BOX ON CEILING OF BASEMENT BUILDING 100 SPLICE NEW CONDUCTORS TO EXISTING CONDUCTORS FEEDING (E) SWBD EHD1002A.
 - 5 (E) 2" SPARE CONDUIT FROM EMERGENCY MANHOLE, STUB UP IN WALL OF BASEMENT OF BUILDING 100.
 - 6 CONTRACTOR SHALL PROVIDE AND INSTALL A NEW 2" CONDUIT STUB UP ON WALL OF BASEMENT B100 TO MAIN ELECTRICAL ROOM ME-2. CONNECT TO CONDUIT STUB UP, RUN CONDUIT PARALLEL TO EXISTING CONDUIT OF DIST. PANEL "QHD1002A1" ABOVE EXISTING CORRIDOR CEILING. CORRIDOR IS CONGESTED WITH (E) UTILITIES PROVIDE VERTICAL AND HORIZONTAL OFFSETS, PULL BOXES, ETC, AS NEEDED).
 - 7 CONTRACTOR SHALL PROVIDE AND INSTALL NEW 3 SETS OF 16 #12AWG FROM NEW PARALLELING SWITCHGEAR "EHD1003A" TO ME-2 BUILDING 100. ONE SET SHALL BE TERMINATED DIRECTLY INSIDE EXISTING ATS "QATS1002E" INSTALL WIRES IN NEW 2" CONDUIT (NOTE 3 AND 6), THROUGH EMERGENCY MANHOLE AND EXISTING SPARE CONDUIT STUBBED UP IN WALL OF BASEMENT OF B100 (NOTE 5).
 - 8 ESTIMATED LOCATION TO TRANSITION CONDUIT FROM BASEMENT CEILING SPACE TO LEVEL 1 CEILING SPACE.
 - 9 CONTRACTOR SHALL DELETE EXISTING PROGRAMMING CONTROLLING 8 ATS IN B-100, PRESENTLY CONNECTED TO EHD1002A IN ME-2, B-100. CONTRACTOR SHALL WRITE NEW PROGRAMMING TO CONTROL THESE 8 ATS FROM NEW CONTROL PANEL IN NEW PARALLELING SWITCHBOARD IN NEW B103A. CONTRACTOR SHALL ALSO PROGRAM THE CONTROLS OF EXISTING ATS QATS1002E IN B-100, AND NEW ATS'S EATS1003A AND QATS1003A IN (N) B-103A.
 - 10 FOR DETAILS SEE COMMUNICATION PLAN DWG. T-102.
 - 11 CONTRACTOR SHALL SURVEY AND VERIFY EXISTING UNDERGROUND ELECTRICAL DUCT BANKS.
 - 12 ALL SPLICES FOR POWER CONDUCTORS AND CONTROL WIRING SHALL BE WATERPROOF BUTT SPLICES.

three inches = one foot
 one and one half inches = one foot
 one inch = one foot
 three quarters inch = one foot
 one half inch = one foot
 three eighths inch = one foot
 one quarter inch = one foot
 one eighth inch = one foot

SITE POWER PLAN
SCALE: 1/8" = 1'-0"

CONSTRUCTION DOCUMENTS

FINAL BID DOCUMENTS (15-411)	6/22/17
100% CONSTRUCTION DOCUMENTS (15-410)	6/15/17
100% DESIGN DEVELOPMENT (15-407)	5/12/17
50% DESIGN DEVELOPMENT (15-401)	4/13/17
100% SCHEMATIC DESIGN (15-391)	3/10/17
65% DESIGN DEVELOPMENT (15-354)	11/30/16
15% DESIGN REPORT (15-269)	5/5/16
Revisions:	Date

CONSULTANTS:

KEY PLAN

STAMP

ARCHITECT/ENGINEERS:



ATTENTION:
 ONLY WET SIGNED DOCUMENTS CONSTITUTE ADVANCE DESIGN CONSULTANTS, INC. PROFESSIONAL WORK AND BECAUSE OTHER REPRODUCIBLE DOCUMENTS MAY BE EASILY ALTERED WITHOUT THE CONSENT OF ADVANCE DESIGN CONSULTANTS, INC. THE WET SIGNED DOCUMENTS MUST BE REFERRED TO FOR THE ORIGINAL AND CORRECT INFORMATION. IF THERE ARE ANY DIFFERENCES BETWEEN THE WET SIGNED DOCUMENTS AND ANY OTHER DOCUMENTS, THE WET SIGNED DOCUMENTS SHALL GOVERN.
 ADVANCE DESIGN CONSULTANTS, INC. IS NOT RESPONSIBLE FOR ANY MODIFICATIONS MADE TO OUR DOCUMENTS BY ANYONE OTHER THAN AUTHORIZED REPRESENTATIVES OF ADVANCE DESIGN CONSULTANTS, INC.
 PR# 15-308-55

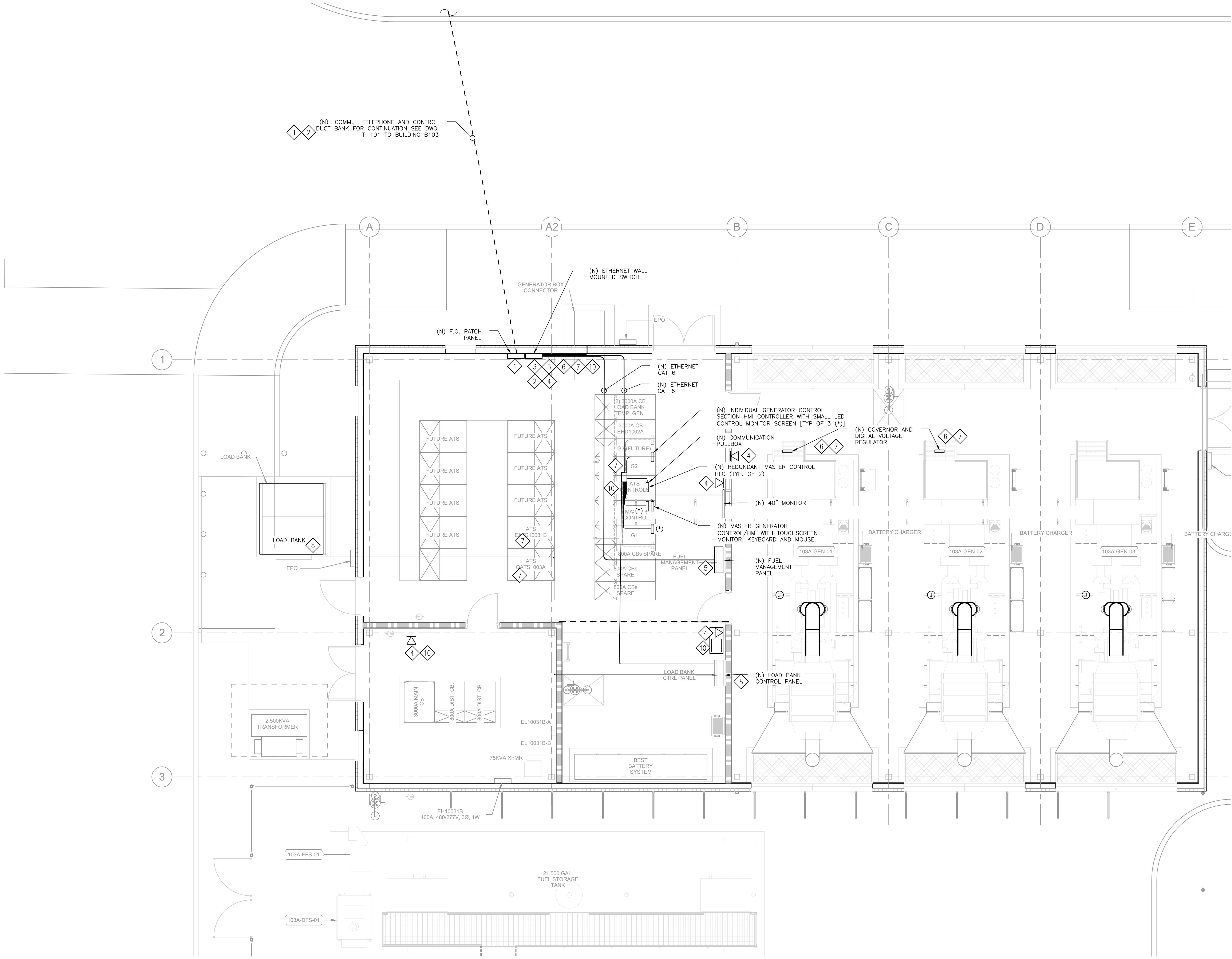
Drawing Title
ELECTRICAL SITE POWER PLAN (FOR REFERENCE ONLY)
 Approved: Project Director

Project Title
PAD B100/101 EMERGENCY POWER UPGRADE
 Location
3801 MIRANDA AVE, PALO ALTO, CA
 Date
6/22/2017

Project Number
640-15-158
 Building Number
B103A
 Drawing Number
T-101



three inches = one foot
 one and one half inches = one foot
 one inch = one foot
 three quarters inch = one foot
 one half inch = one foot
 three eighths inch = one foot
 one quarter inch = one foot
 one eighth inch = one foot
 one eighth inch = one foot



SHEET NOTES:

- 1 CONTRACTOR SHALL PROVIDE AND INSTALL TWO (2) 2" (1 SPARE) WITH A FIBER-OPTIC CABLE FROM THE ENCLOSED F.O. PATCH PANEL LOCATED IN B103 TO THE NEW ENCLOSED F.O. PATCH PANEL INSTALLED IN WALL MOUNTED LOCKABLE SECURITY BOX IN NEW BUILDING 103A. PREVIOUS OF THE BEGINNING OF WORK CONTRACTOR SHALL MARK THE PATH OF THE TRENCHING FOR APPROVAL OF VA COR. NOT WORK SHALL BE PERFORMANCE WITHOUT PRIOR APPROVAL.
- 2 CONTRACTOR SHALL PROVIDE AND INSTALL 1" WITH NYLON PULLWIRE AND BUSHING FROM THE TELEPHONE SYSTEM IN BUILDING 103 TO ENCLOSED BOX IN NEW BUILDING 103A. INSTALL WALL MOUNTED LOCKABLE SECURITY BOX BELOW NEW SECURITY SWITCH BOX. PREVIOUS OF THE BEGINNING OF WORK CONTRACTOR SHALL MARK THE PATH OF THE TRENCHING FOR APPROVAL OF VA COR. NOT WORK SHALL BE PERFORMANCE WITHOUT PRIOR APPROVAL.
- 3 CONTRACTOR SHALL PROVIDE AND INSTALL WALL MOUNTED ENCLOSED LOCKABLE SECURITY BOX IN NEW BUILDING 103A. TO INSTALL NEW ETHERNET SWITCH. PREVIOUS OF THE BEGINNING OF WORK CONTRACTOR SHALL COORDINATE FINAL LOCATION WITH THE VA COR.
- 4 CONTRACTOR SHALL PROVIDE AND INSTALL 1" FROM NEW ENCLOSED BOX WALL MOUNTED LOCATED BELOW SECURITY BOX SWITCH TO NEW FOUR PORT WITH 2 MULTIPOINT DATA AND 2 TELEPHONE OUTLET J-BOX WITH BLANK COVER ±18 AFF. WITH NYLON PULL WIRE AND BUSHING. SHALL COORDINATE WITH THE VA COR.
- 5 CONTRACTOR SHALL PROVIDE AND INSTALL 6 #12AWG FROM LEVEL SWITCHES AND ALARM RELAYS IN FUEL MANAGEMENT CONTROL SYSTEM TO CONTROL PANEL IN PARALLELING SWITCHGEAR.
- 6 CONTRACTOR SHALL PROVIDE DEDICATED ETHERNET CAT 6 CABLE FROM GENERATOR CONTROL PANEL TO ETHERNET WALL MOUNTED SWITCH TO TAKE THE DIESEL FUEL SYSTEM SIGNALS.
- 7 CONTRACTOR SHALL PROVIDE DEDICATED ETHERNET CAT 6 CABLE FROM GENERATOR CONTROL PANEL TO ETHERNET WALL MOUNTED SWITCH CONTROL OPERATING SIGNALS FROM ATs AND GENERATORS.
- 8 FURNISH ALL CONTROL WIRING AND PROGRAMING BETWEEN LOAD BANK REMOTE CONTROL PANEL AND GENERATOR PARALLELING SWITCHGEAR.
- 9 PROVIDE ALL CONTROL WIRING BETWEEN GENERATOR CONTROL PANEL AND GENERATOR PARALLELING SWITCHGEAR.
- 10 PC FOR POWER METERING PER SECTION 25 10 10 CONNECT TO SWITCHES IN NORMAL POWER SWITCH GEAR 26 23 10 AND GENERATOR PARALLELING SWITCHGEAR SECTION 26 23 15.

SYMBOLLOGY

- △ TELEPHONE
- PATCH PANEL OR SWITCH

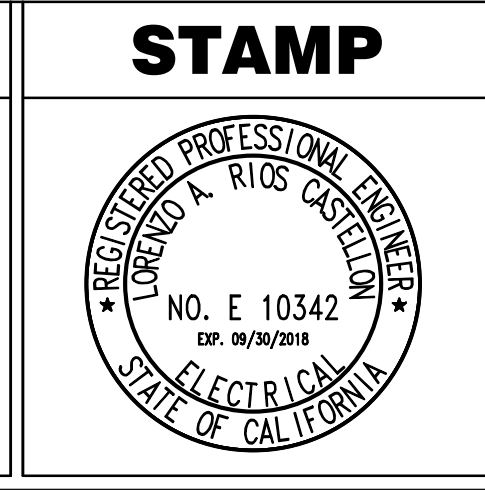
B103A COMMUNICATION PLAN
 SCALE: 1/4" = 1'-0"

CONSTRUCTION DOCUMENTS

FINAL BID DOCUMENTS (15-411)	6/22/17
100% CONSTRUCTION DOCUMENTS (15-410)	6/15/17
100% DESIGN DEVELOPMENT (15-407)	5/12/17
50% DESIGN DEVELOPMENT (15-401)	4/13/17
100% SCHEMATIC DESIGN (15-391)	3/10/17
65% DESIGN DEVELOPMENT (15-354)	11/30/16
15% DESIGN REPORT (15-269)	5/5/16
Revisions:	Date

CONSULTANTS:

KEY PLAN



ARCHITECT/ENGINEERS:

ADVANCE DESIGN CONSULTANTS, INC.

988 PARK AVENUE SAN JOSE CALIFORNIA 95128
 P: (408) 297-1881 F: (408) 294-3186 www.adengineers.com
 PR.# 15-308-55

ATTENTION:

ONLY WET SIGNED DOCUMENTS CONSTITUTE ADVANCE DESIGN CONSULTANTS, INC. PROFESSIONAL WORK AND BECAUSE OTHER REPRODUCIBLE DOCUMENTS MAY BE EASILY ALTERED WITHOUT THE CONSENT OF ADVANCE DESIGN CONSULTANTS, INC. THE WET SIGNED DOCUMENTS MUST BE REFERRED TO FOR THE ORIGINAL AND CORRECT INFORMATION. IF THERE ARE ANY DIFFERENCES BETWEEN THE WET SIGNED DOCUMENTS AND ANY OTHER DOCUMENTS, THE WET SIGNED DOCUMENTS SHALL GOVERN.

ADVANCE DESIGN CONSULTANTS, INC. IS NOT RESPONSIBLE FOR ANY MODIFICATIONS MADE TO OUR DOCUMENTS BY ANYONE OTHER THAN AUTHORIZED REPRESENTATIVES OF ADVANCE DESIGN CONSULTANTS, INC.

Drawing Title
**ELECTRICAL
 B103A COMMUNICATION PLAN**

Approved: Project Director

Project Title
**PAD B100/101 EMERGENCY
 POWER UPGRADE**

Location
3801 MIRANDA AVE, PALO ALTO, CA

Date
6/22/2017

Checked
A.GUERRERO

Drawn
S.SETAYESHPOUR

Project Number
640-15-158

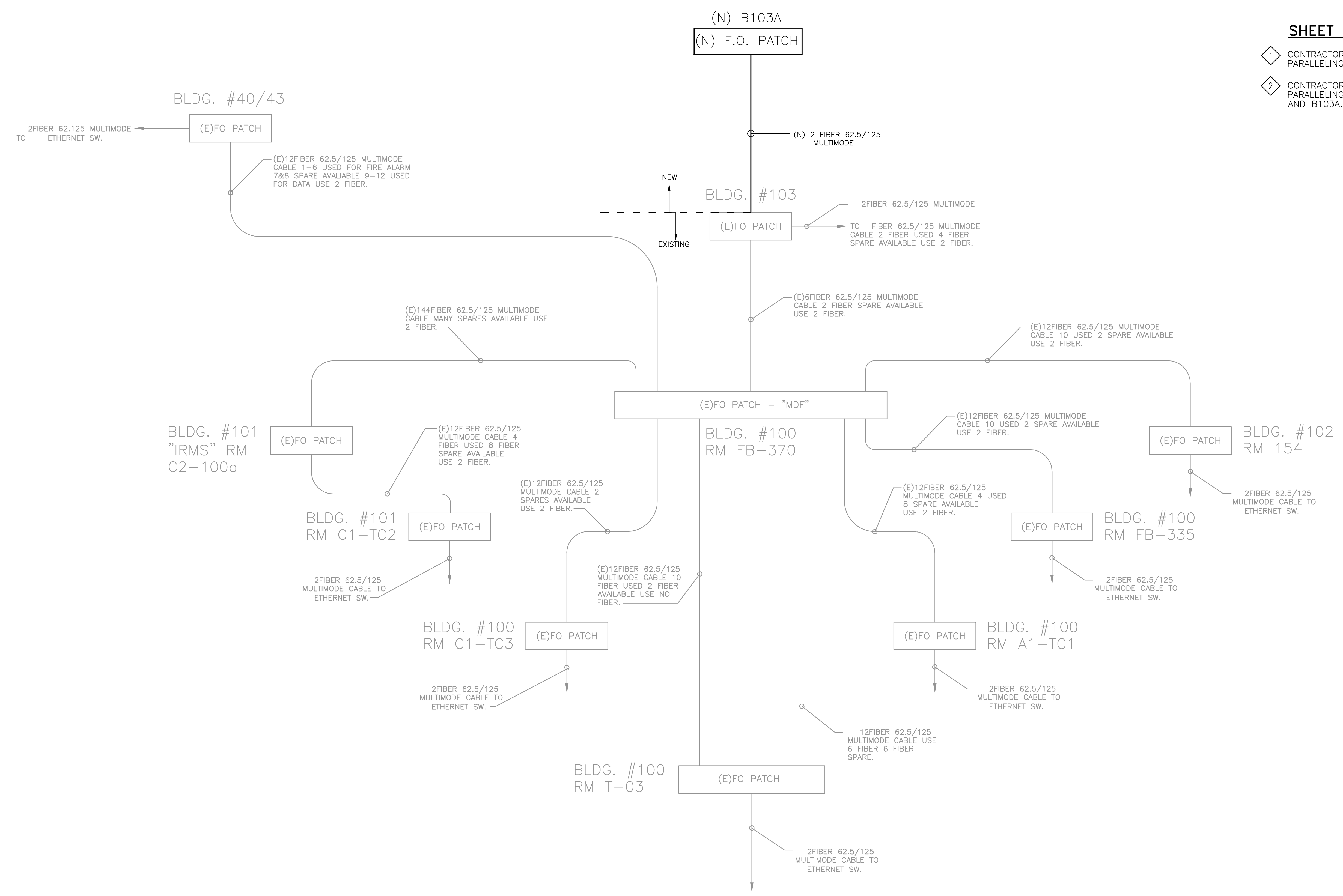
Building Number
B103A

Drawing Number
T-102

**Office of
 Facilities
 Management**

Department of
 Veterans Affairs

three inches = one foot
 one and one half inches = one foot
 one inch = one foot
 three quarters inch = one foot
 three quarters inch = one foot
 one half inch = one foot
 one half inch = one foot
 three eighths inch = one foot
 one quarter inch = one foot
 one eighth inch = one foot
 one eighth inch = one foot



- SHEET NOTES:**
- CONTRACTOR SHALL PERFORM, FULLY TEST AND COMMISSION NEW PARALLELING GEAR PLC AND SCADA SYSTEM AT B103A.
 - CONTRACTOR SHALL PERFORM, FULLY TEST AND RE-COMMISSION ENTIRE PARALLELING GEAR PLC AND SCADA SYSTEM TO INCLUDE BOTH B103 AND B103A.

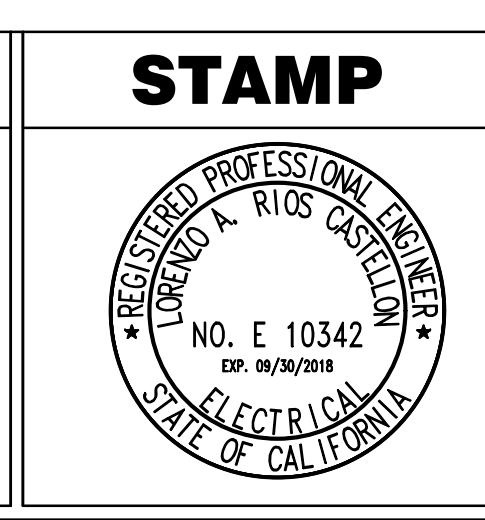
COMMUNICATION DIAGRAM
 SCALE: N.T.S.

CONSTRUCTION DOCUMENTS

FINAL BID DOCUMENTS (15-411)	6/22/17
100% CONSTRUCTION DOCUMENTS (15-410)	6/15/17
100% DESIGN DEVELOPMENT (15-407)	5/12/17
50% DESIGN DEVELOPMENT (15-401)	4/13/17
100% SCHEMATIC DESIGN (15-391)	3/10/17
65% DESIGN DEVELOPMENT (15-354)	11/30/16
15% DESIGN REPORT (15-269)	5/5/16
Revisions:	Date

CONSULTANTS:	
---------------------	--

KEY PLAN	
-----------------	--



ARCHITECT/ENGINEERS:

ADVANCE DESIGN CONSULTANTS, INC.

988 PARK AVENUE SAN JOSE CALIFORNIA 95128
 P: (408) 297-1881 F: (408) 294-3186 www.adengineers.com

ATTENTION:
 ONLY WET SIGNED DOCUMENTS CONSTITUTE ADVANCE DESIGN CONSULTANTS, INC. PROFESSIONAL WORK AND BECAUSE OTHER REPRODUCIBLE DOCUMENTS MAY BE EASILY ALTERED WITHOUT THE CONSENT OF ADVANCE DESIGN CONSULTANTS, INC. THE WET SIGNED DOCUMENTS MUST BE REFERRED TO FOR THE ORIGINAL AND CORRECT INFORMATION. IF THERE ARE ANY DIFFERENCES BETWEEN THE WET SIGNED DOCUMENTS AND ANY OTHER DOCUMENTS, THE WET SIGNED DOCUMENTS SHALL GOVERN.
 ADVANCE DESIGN CONSULTANTS, INC. IS NOT RESPONSIBLE FOR ANY MODIFICATIONS MADE TO OUR DOCUMENTS BY ANYONE OTHER THAN AUTHORIZED REPRESENTATIVES OF ADVANCE DESIGN CONSULTANTS, INC.
 PR# 15-308-55

Drawing Title	ELECTRICAL COMMUNICATION DIAGRAM
Approved: Project Director	

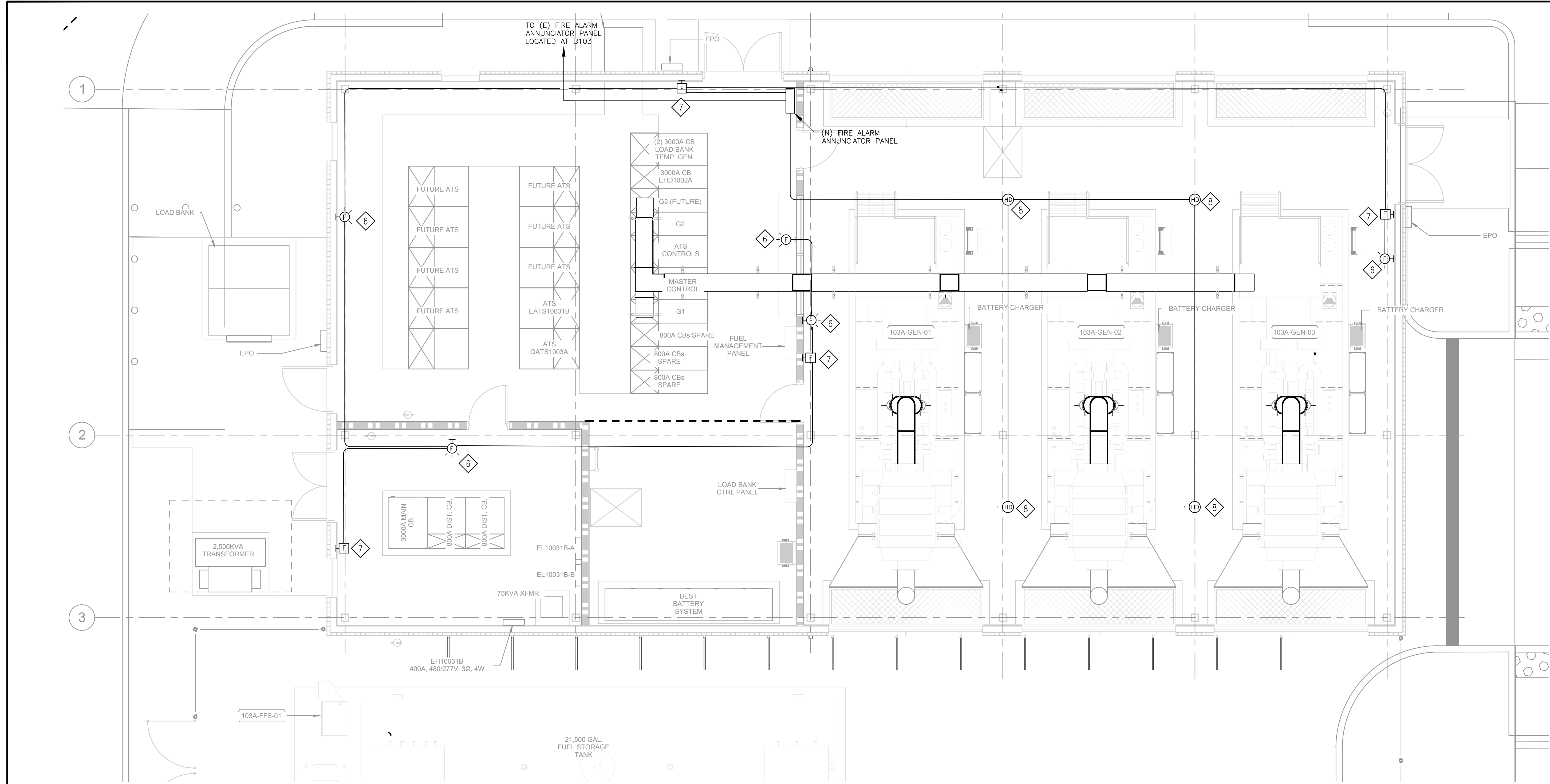
Project Title	PAD B100/101 EMERGENCY POWER UPGRADE
Location	3801 MIRANDA AVE, PALO ALTO, CA
Date	6/22/2017
Checked	AGUIRRE
Drawn	M. CUELLAR

Project Number	640-15-158
Building Number	B103A
Drawing Number	T-103

Office of Facilities Management

Department of Veterans Affairs

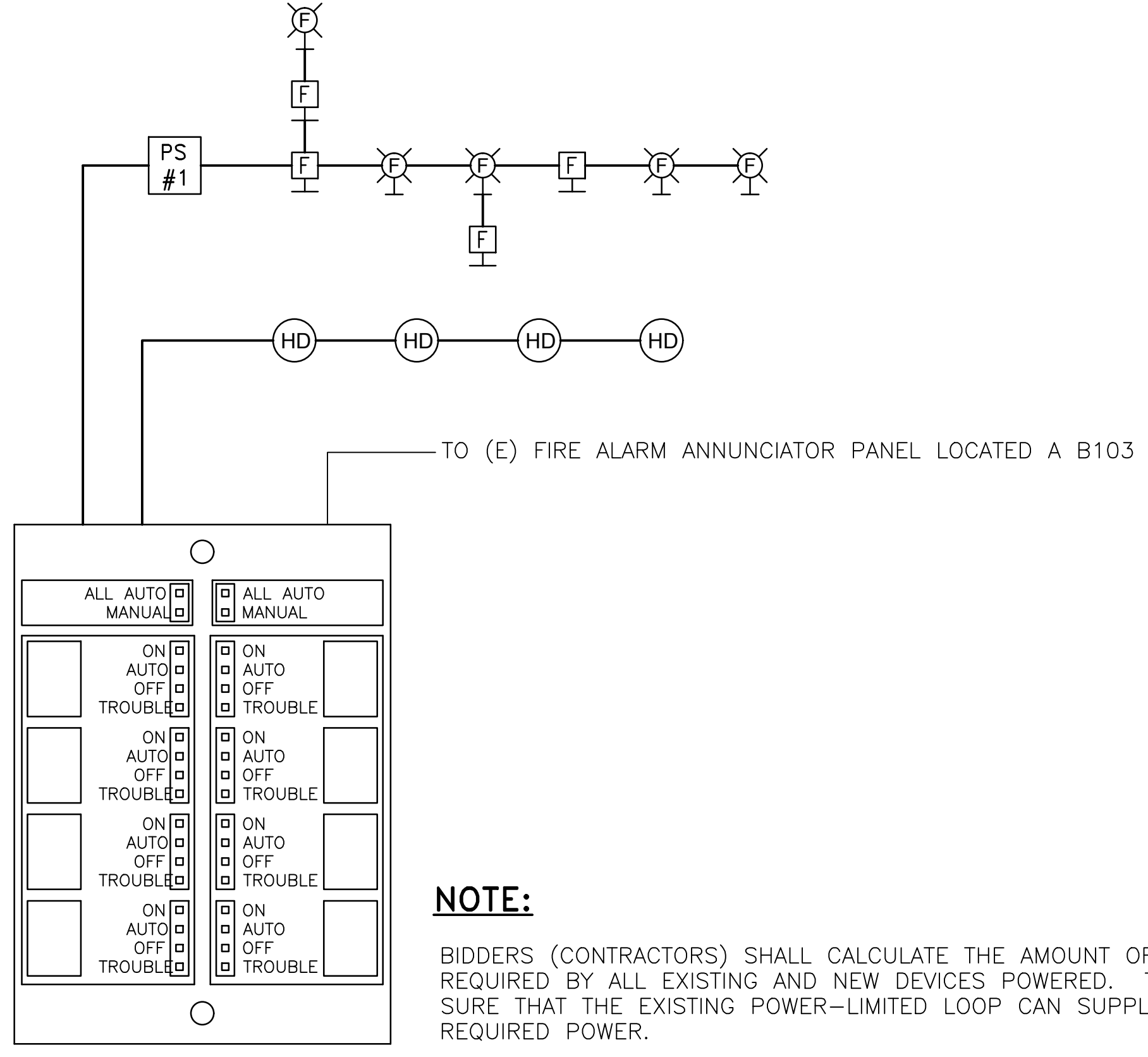
three inches = one foot
 one and one half inches = one foot
 one inch = one foot
 three quarters inch = one foot
 one half inch = one foot
 three eighths inch = one foot
 one eighth inch = one foot
 one quarter inch = one foot
 one eighth inch = one foot



SHEET NOTES:

- 1 ALL FIRE DEVICES SHALL HAVE IDENTIFICATION LABELS ATTACHED ADJACENT TO THE DEVICE WITH PROPER IDENTIFICATION CODE ENGRAVED WITH WHITE LETTERS ON RED BACKGROUND.
- 2 ALL FIRE SYSTEMS SHALL CONFORM TO THE LATEST N.F.P.A. STANDARDS AND ALSO MEET ALL CALIFORNIA STATE REQUIREMENTS. PAINT FIRE ALARM JUNCTION BOXES RED; ON THE RISER RUNS.
- 3 LABEL CONDUIT CARRYING ADDRESSABLE (SUPERVISORY) LOAD AS "FA-24 VDC ADDRESS". LABEL CONDUIT CARRYING POWER LIMITED LOAD AS "FA-24 VDC PWR LMTD", AS PER VA STANDARD.
- 4 PROVIDE NECESSARY CONTROL CABLE AND WIRING AS RECOMMENDED BY THE EQUIPMENT NECESSARY MANUFACTURER INCLUDING ASSOCIATED INTERFACE WIRING WITH MECHANICAL SYSTEM FOR EMERGENCY SHUTDOWN OF EQUIPMENT DURING ALARM CONDITION.
- 5 PROVIDE FIRE ALARM STROBE LIGHTS, NOTIFIER MODEL GX5-4HWR, LIGHT INTENSITY 100 CANDELA MOUNTED 6'-6" ABOVE FINISHED FLOOR.
- 6 PROVIDE FIRE ALARM MANUAL PULL STATION, NOTIFIER MODEL NO. NBG-10T SERIES, MOUNTED 4'-0" ABOVE FINISHED FLOOR.
- 7 CONTRACTOR SHALL PROVIDE AND INSTALL NEW HEAT DETECTOR NEW HEAT DETECTOR SHALL BE CEILING MOUNTED.
- 8 CONTRACTOR SHALL COORDINATE FIRE ALARM SYSTEM WORK WITH VA COORDINATOR.

ELECTRICAL FIRE ALARM B103A



NOTE:

BIDDERS (CONTRACTORS) SHALL CALCULATE THE AMOUNT OF CURRENT REQUIRED BY ALL EXISTING AND NEW DEVICES POWERED. TO BE SURE THAT THE EXISTING POWER-LIMITED LOOP CAN SUPPLY THE REQUIRED POWER.

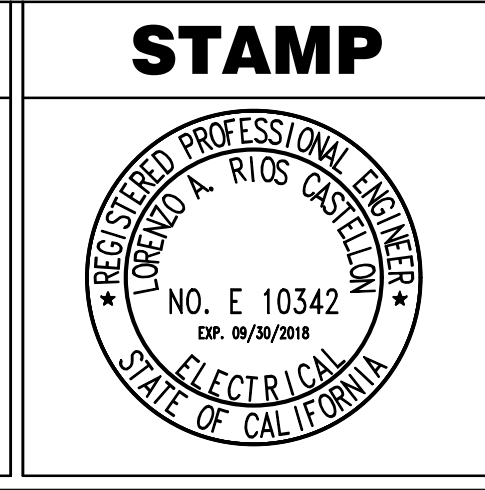
1 FIRE ALARM RISER DIAGRAM B103A
 SCALE: NONE

CONSTRUCTION DOCUMENTS

Revisions:	Date
FINAL BID DOCUMENTS (15-411)	6/22/17
100% CONSTRUCTION DOCUMENTS (15-410)	6/15/17
100% DESIGN DEVELOPMENT (15-407)	5/12/17
50% DESIGN DEVELOPMENT (15-401)	4/13/17
100% SCHEMATIC DESIGN (15-391)	3/10/17
65% DESIGN DEVELOPMENT (15-354)	11/30/16
15% DESIGN REPORT (15-269)	5/5/16

CONSULTANTS:

KEY PLAN



ARCHITECT/ENGINEERS:
ADVANCE DESIGN CONSULTANTS, INC.
 988 PARK AVENUE SAN JOSE CALIFORNIA 95128
 P: (408) 297-1881 F: (408) 294-3186 www.adcengineers.com
 PR.# 15-308-55

ATTENTION:
 ONLY WET SIGNED DOCUMENTS CONSTITUTE ADVANCE DESIGN CONSULTANTS, INC. PROFESSIONAL WORK AND BECAUSE OTHER REPRODUCIBLE DOCUMENTS MAY BE EASILY ALTERED WITHOUT THE CONSENT OF ADVANCE DESIGN CONSULTANTS, INC. THE WET SIGNED DOCUMENTS MUST BE REFERRED TO FOR THE ORIGINAL AND CORRECT INFORMATION. IF THERE ARE ANY DIFFERENCES BETWEEN THE WET SIGNED DOCUMENTS AND ANY OTHER DOCUMENTS, THE WET SIGNED DOCUMENTS SHALL GOVERN.
 ADVANCE DESIGN CONSULTANTS, INC. IS NOT RESPONSIBLE FOR ANY MODIFICATIONS MADE TO OUR DOCUMENTS BY ANYONE OTHER THAN AUTHORIZED REPRESENTATIVES OF ADVANCE DESIGN CONSULTANTS, INC.

Drawing Title
ELECTRICAL FIREALARM PLAN AND RISER DIAGRAM B103A
 Approved: Project Director

Project Title
PAD B100/101 EMERGENCY POWER UPGRADE
 Location
3801 MIRANDA AVE, PALO ALTO, CA
 Date
6/22/2017
 Checked
A.GUERRERO
 Drawn
S.SETAYESHPOUR

Project Number
640-15-158
 Building Number
B103A
 Drawing Number
FA-1

