

# VETERANS AFFAIRS PALO ALTO HEALTHCARE SYSTEM

## PAD B100/101 EMERGENCY POWER UPGRADE

VA PROJECT No. 640-15-158



### PROJECT DESCRIPTION

THE PROJECT INCLUDES THE CONSTRUCTION OF NEW ELECTRICAL BUILDING (B103A)

THE CONSTRUCTION OF THE NEW BUILDING INCLUDES THE INSTALLATION OF THE (N) 12KV-4 Ø, UNDERGROUND MEDIUM VOLTAGE FEEDER TO (N) 2,500KVA/3,200KVA/12,470V/480-277V, 3Ø 4W TRANSFORMER NORMAL POWER AND EMERGENCY POWER DISTRIBUTION SWITCHBOARDS AND ATS, AND THE INSTALLATION OF TWO (2) 1,750KW/2,187KVA, 3 PHASE DIESEL ENGINE GENERATORS WITH 5,000 PARALLELING SWITCHGEAR AND ASSOCIATED ANCILLARY EQUIPMENT INCLUDING 5,000 GALLON DIESEL FUEL STORAGE TANK AND ASSOCIATED PUMPS, PIPING AND ANCILLARIES.

THE NEW EMERGENCY POWER DISTRIBUTION SYSTEM WILL FEED THE LOADS IN ME-2 BUILDING 100 AND THE EXISTING CHILLER YARD IN BUILDING 100.

DRAWING INDEX	
NUMBER	SHEET NAME
G	GENERAL
G-000	DRAWING INDEX, PARTIAL SITE PLAN, AND REFERENCE IMAGES
G-102	EQUIPMENT PLAN
C	CIVIL
C002	EXISTING CONDITIONS
CD101	DEMOLITION PLAN
CP101	SITE PLAN
CP102	GRADING PLAN
CU101	UTILITY PLAN
CP103	EROSION CONTROL PLAN
CP501	DETAILS
S	STRUCTURAL
S000	STRUCTURAL GENERAL NOTES, ABBREVIATIONS AND SYMBOLS
S001	MATERIAL SPECIFICATIONS
SB101	FOUNDATION PLAN
SF101	ROOF FRAMING PLAN
S501	TYPICAL CONCRETE SECTIONS AND DETAILS
S502	TYPICAL STEEL SECTIONS AND DETAILS
SA001	GENERAL NOTES
SA101	METAL STUD FRAMING PARTIAL FOUNDATION PLAN
SA102	METAL STUD FRAMING PARTIAL ROOF LEVEL PLAN
SA501	METAL STUD DETAILS
A	ARCHITECTURAL
A-000	ABBREVIATIONS, GENERAL NOTES & DIMENSIONING CONVENTIONS
A-100	PARTIAL SITE PLAN
A-101	B103A - ARCHITECTURAL FLOOR PLAN
A-101S	SLAB PLAN
A-101S.1	TROUGH PLAN
A-102	B103A ROOF PLAN
A-201	NEW GENERATOR BUILDING ELEVATION AND REFERENCE IMAGES
A-202	NEW GENERATOR BUILDING B103A ELEVATIONS
A-203	NEW GENERATOR BUILDING B103A ELEVATIONS
A-204	INTERIOR ELEVATIONS
A-301	SECTIONS
A-301A	SECTIONS
A-302	WALL SECTIONS
A-500	EXTERIOR WALL DETAILS
A-501	PARTITION SCHEDULE, FRAMING & BACKING SCHEDULE
A-502	TYPICAL PARTITION DETAILS
A-503	TYPICAL PARTITION DETAILS
A-511	DOOR SCHEDULE
A-512	DOOR DETAILS
A-521	ROOF DETAILS
A-531	FUEL STORAGE TANK STAIR AND FENCE DETAILS
A-901	NEW GENERATOR BUILDING 3D VIEW
A-902	NEW GENERATOR BUILDING 3D VIEW

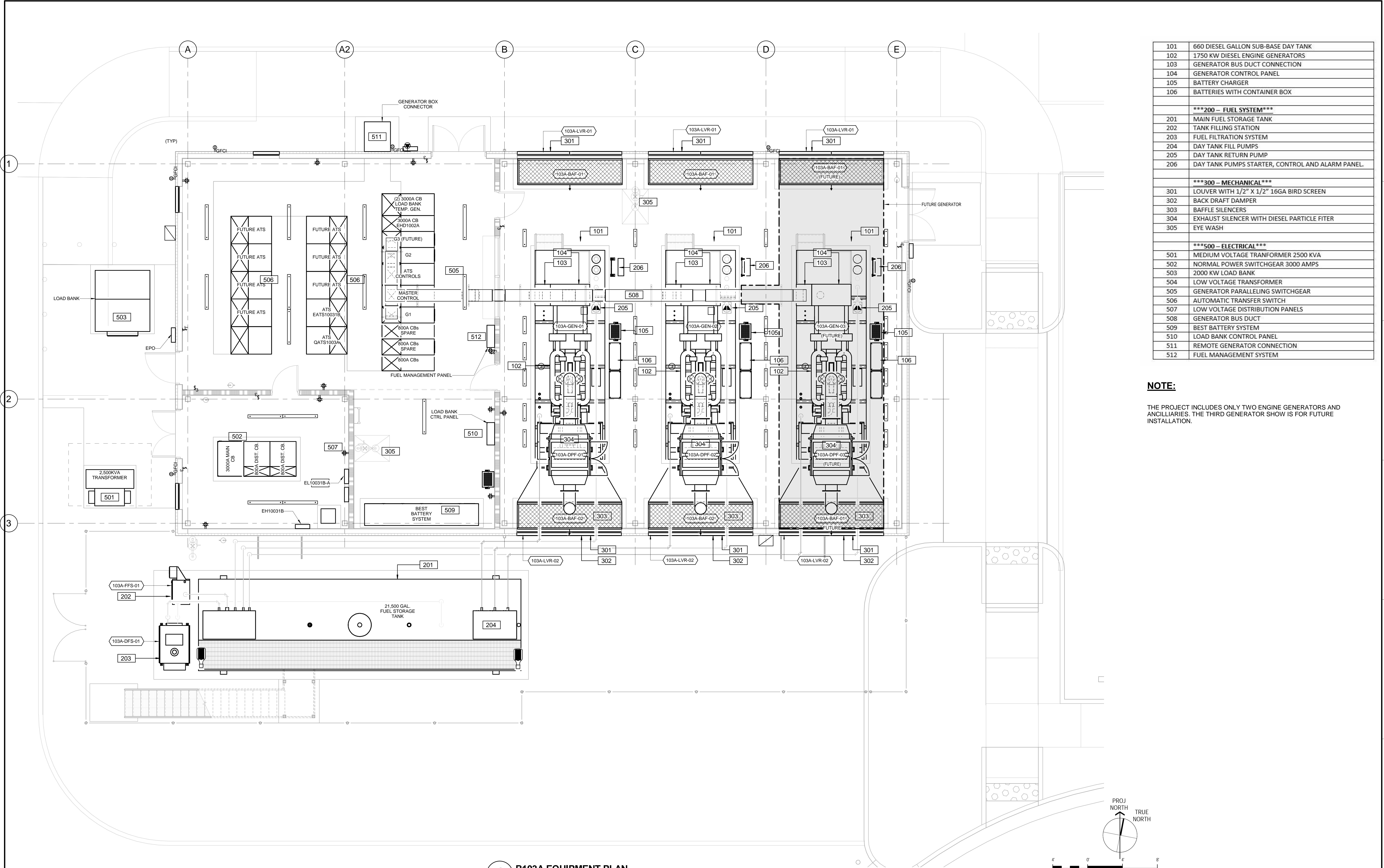
DRAWING INDEX	
NUMBER	SHEET NAME
M	MECHANICAL
M-001	MECHANICAL NOTES, SYMBOLS & ABBREVIATIONS
M-101	B013A MECHANICAL PLAN
M-102	B103A MECHANICAL ROOF PLAN
M-103	B103A - NEW PIPING PLAN
M-301	B103A SECTIONS
M-501	MECHANICAL DETAILS
M-601	EMERGENCY/STAND-BY POWER MECHANICAL FUEL OIL SYSTEM DIAGRAM
M-701	MECHANICAL SCHEDULES
P	PUMBING
P-000	PLUMBING NOTES, SYMBOLS & ABBREVIATIONS
P-100	PLUMBING PLAN
P-500	PLUMBING DETAILS
E	ELECTRICAL
E-001	GENERAL NOTES, SYMBOLS AND ABBREVIATIONS
ES-101	ELECTRICAL SITE POWER PLAN (FOR REFERENCE ONLY)
E-101	PARTIAL SITE POWER PLAN
E-102	B103A POWER PLAN
E-103	B103A LIGHTING PLAN
E-104	B103A ROOF POWER PLAN
E-105	B103A GROUINDING PLAN
E-106	B103 COMMUNICATION PLAN
E-301	ELECTRICAL BUILDING 103A SECTIONS
E-401	B100 MAIN ELECTRICAL ROOM ME-2 SERVICE 2
E-501	GROUNDING DETAILS
E-502	BUSWAY DETAILS
E-503	15KV DETAILS
ED-601	EMERGENCY, ESSENTIAL AND CRITICAL B-103 ONE LINE DIAGRAM DEMOLITION
ED-602	NORMAL/EMERGENCY POWER DEMOLITION ONE LINE DIAGRAM SERVICE 1
E-601	EMERGENCY, ESSENTIAL AND CRITICAL B-103 ONE LINE DIAGRAM NEW WORK
E-602	EMERGENCY/STAND-BY POWER ONE LINE DIAGRAM NEW TEMPORARY SERVICE 3
E-603	NORMAL/EMERGENCY POWER NEW ONE LINE DIAGRAM SERVICE 1
E-604	NORMAL/EMERGENCY POWER NEW ONE LINE DIAGRAM SERVICE 2
EC-601	B103 CONTROL DRIAGRAM
E-701	PANEL SCHEDULES
T	TELECOM
T-101	B103A SITE POWER PLAN
T-102	B103A COMMUNICATION PLAN
T-103	B103A COMMUNICATION DIAGRAM
FA	FIRE ALARM
FA-101	B103A FIRE ALARM PLAN

### CONSTRUCTION DOCUMENTS

FINAL BID DOCUMENTS (15-411)	6/22/17
100% CONSTRUCTION DOCUMENTS (15-410)	6/15/16
100% DESIGN DEVELOPMENT (15-307)	05/12/17
50% DESIGN DEVELOPMENT (15-401)	4/13/17
100% SCHEMATIC DESIGN (15-391)	3/10/17
65% DESIGN DEVELOPMENT (15-354)	11/30/16
15% DESIGN REPORT (15-269)	5/5/16
<b>Revisions:</b>	<b>Date</b>

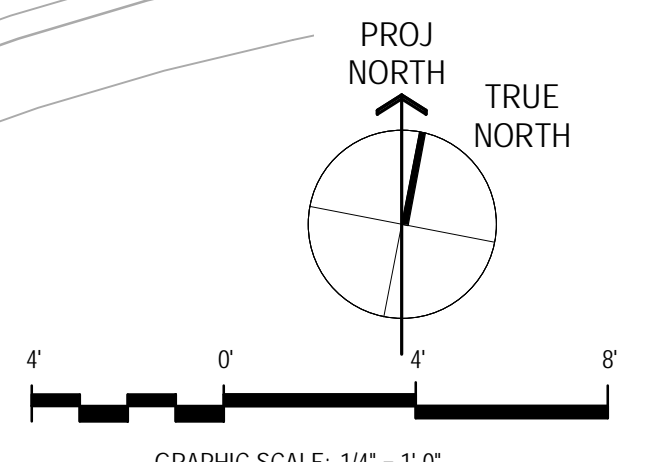
<b>CONSULTANTS:</b>	<b>KEY PLAN</b>	<b>STAMP</b>	<b>ARCHITECT/ENGINEERS</b>	Drawing Title:	Project Title:	Project Number:	Office of Facilities Management  Department of Veterans Affairs
			 998 PARK AVENUE SAN JOSE CALIFORNIA 95126 P: (408) 287-1881 F: (408) 294-3186 www.adcengineers.com	<b>DRAWING INDEX, PARTIAL SITE PLAN, AND REFERENCE IMAGES</b>	<b>PAD B100/101 EMERGENCY POWER UPGRADE</b>	640-15-158	
				Approved: Project Director	Location: <b>3801 MIRANDA AVE, PALO ALTO, CA</b>	Building Number: <b>B103A</b>	Drawing Number: <b>G-000</b> Dwg. of
					Date: 6/22/17	Checked: L. RIOS	

three inches = one foot  
 one and one half inches = one foot  
 one inch = one foot  
 three quarters inch = one foot  
 one half inch = one foot  
 one quarter inch = one foot  
 one eighth inch = one foot



101	660 DIESEL GALLON SUB-BASE DAY TANK
102	1750 KW DIESEL ENGINE GENERATORS
103	GENERATOR BUS DUCT CONNECTION
104	GENERATOR CONTROL PANEL
105	BATTERY CHARGER
106	BATTERIES WITH CONTAINER BOX
***200 - FUEL SYSTEM***	
201	MAIN FUEL STORAGE TANK
202	TANK FILLING STATION
203	FUEL FILTRATION SYSTEM
204	DAY TANK FILL PUMPS
205	DAY TANK RETURN PUMP
206	DAY TANK PUMPS STARTER, CONTROL AND ALARM PANEL.
***300 - MECHANICAL***	
301	LOUVER WITH 1/2" X 1/2" 16GA BIRD SCREEN
302	BACK DRAFT DAMPER
303	BAFFLE SILENCERS
304	EXHAUST SILENCER WITH DIESEL PARTICLE FILTER
305	EYE WASH
***500 - ELECTRICAL***	
501	MEDIUM VOLTAGE TRANSFORMER 2500 KVA
502	NORMAL POWER SWITCHGEAR 3000 AMPS
503	2000 KW LOAD BANK
504	LOW VOLTAGE TRANSFORMER
505	GENERATOR PARALLELING SWITCHGEAR
506	AUTOMATIC TRANSFER SWITCH
507	LOW VOLTAGE DISTRIBUTION PANELS
508	GENERATOR BUS DUCT
509	BEST BATTERY SYSTEM
510	LOAD BANK CONTROL PANEL
511	REMOTE GENERATOR CONNECTION
512	FUEL MANAGEMENT SYSTEM

**NOTE:**  
 THE PROJECT INCLUDES ONLY TWO ENGINE GENERATORS AND ANCLILIARIES. THE THIRD GENERATOR SHOW IS FOR FUTURE INSTALLATION.



CONSTRUCTION DOCUMENTS

FINAL BID DOCUMENTS (15-411)	6/22/17
100% CONSTRUCTION DOCUMENTS (15-410)	6/15/16
100% DESIGN DEVELOPMENT (15-307)	05/12/17
50% DESIGN DEVELOPMENT (15-401)	4/13/17
100% SCHEMATIC DESIGN (15-391)	3/10/17
65% DESIGN DEVELOPMENT (15-354)	11/30/16
15% DESIGN REPORT (15-269)	5/5/16
<b>Revisions:</b>	<b>Date</b>

<p><b>CONSULTANTS:</b></p>	<p><b>KEY PLAN</b></p>	<p><b>1</b></p>	<p><b>B103A EQUIPMENT PLAN</b>          SCALE: 1/4" = 1'-0"</p>	<p><b>STAMP</b></p>	<p><b>ARCHITECT/ENGINEERS</b></p> <p><b>ADVANCE DESIGN CONSULTANTS, INC.</b></p> <p>998 PARK AVENUE SAN JOSE CALIFORNIA 95128          P: (408) 287-1881 F: (408) 294-3186 www.adcengineers.com</p> <p><small>ATTENTION:          ONLY WET SIGNED DOCUMENTS CONSTITUTE ADVANCE DESIGN CONSULTANTS, INC. PROFESSIONAL WORK AND BECAUSE OTHER REPRODUCIBLE DOCUMENTS MAY BE EASILY ALTERED WITHOUT THE CONSENT OF ADVANCE DESIGN CONSULTANTS, INC. THE WET SIGNED DOCUMENTS MUST BE REFERRED TO FOR THE ORIGINAL AND CORRECT INFORMATION. IF THERE ARE ANY DIFFERENCES BETWEEN THE WET SIGNED DOCUMENTS AND ANY OTHER DOCUMENTS, THE WET SIGNED DOCUMENTS SHALL GOVERN.          ADVANCE DESIGN CONSULTANTS, INC. IS NOT RESPONSIBLE FOR ANY MODIFICATIONS MADE TO OUR DOCUMENTS BY ANYONE OTHER THAN AUTHORIZED REPRESENTATIVES OF ADVANCE DESIGN CONSULTANTS, INC.</small></p>	<p>Drawing Title: <b>GENERAL EQUIPMENT PLAN</b></p> <p>Approved Project Director</p>	<p>Project Title: <b>PAD B100/101 EMERGENCY POWER UPGRADE</b></p> <p>Location: <b>3801 MIRANDA AVE, PALO ALTO, CA</b></p> <p>Date: 6/22/17</p> <p>Checked: L. RIOS</p> <p>Drawn: J. AGUIRRE</p>	<p>Project Number: 640-15-158</p> <p>Building Number: B103A</p> <p>Drawing Number: <b>G-102</b></p> <p>Dwg. of</p>	<p>Office of Facilities Management</p> <p>Department of Veterans Affairs</p>
----------------------------	------------------------	-----------------	---	---------------------	--	--	---	--	--