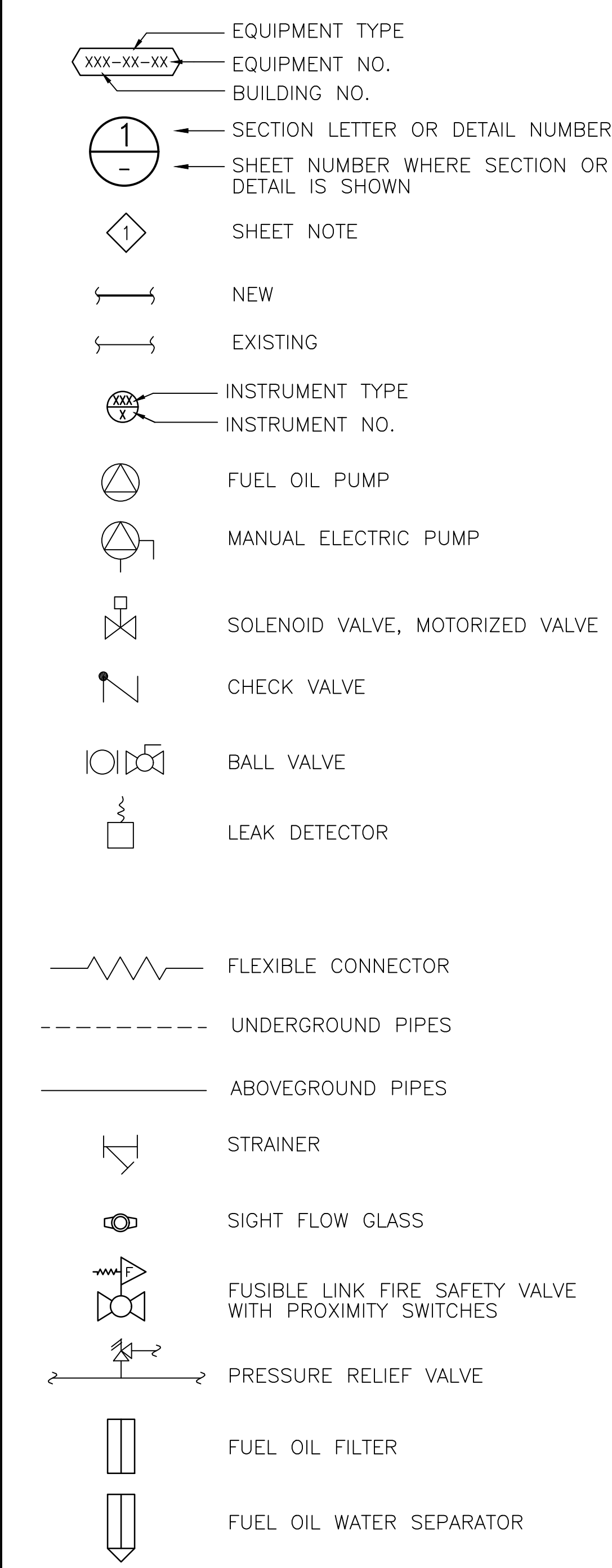


GENERAL NOTES

- A. CONTRACTOR'S RESPONSIBILITY:**
 CONTRACTOR SHALL BE RESPONSIBLE FOR ALL SUBMITTALS SPECIFIED, INCLUDING SHOP DRAWINGS, EQUIPMENT DATA SHEETS WITH MATERIALS, WEIGHT, AND SIZE. CONTRACTOR SHALL VERIFY THE FIELD CONDITIONS AND MAKE ADJUSTMENT TO THE SHOP DRAWINGS AS REQUIRED. ANY CORRECTIVE MEASURE ARISING FROM A LACK OF COORDINATION WILL BE THE SOLE RESPONSIBILITY OF THE CONTRACTOR. CONTRACTOR SHALL COORDINATE WORK WITH OTHER TRADES.
- B. CODE COMPLIANCE:**
 THE CONTRACTOR SHALL COMPLY WITH ALL APPLICABLE NATIONAL, STATE AND LOCAL CODES ISSUED BY THE AUTHORITIES HAVING JURISDICTION. THE COMPLETE MECHANICAL INSTALLATION SHALL BE IN ACCORDANCE WITH THE ADOPTED EDITION OF IMC, IPC, IFC, IBC, OSHA, NFPA, V.A. DESIGN MANUAL REQUIREMENTS, ALL "VAPA" REQUIREMENTS AND THE LATEST RULES AND REGULATIONS OF THE SAFETY ORDERS ISSUED BY THE DIVISION OF INDUSTRIAL SAFETY, STATE OF CALIFORNIA. THE CONTRACTOR SHALL COMPLY DIVISION OF INDUSTRIAL SAFETY, STATE OF CALIFORNIA.
- C. GENERAL AND SPECIAL REQUIREMENT:**
 CONTRACTOR SHALL COMPLY WITH ALL PROVISIONS OF GENERAL REQUIREMENTS (010000) AND LATERAL FORCE ANCHORAGE PROVISIONS (130541).
 A LICENSED STRUCTURAL ENGINEER (S.E.) IN THE STATE OF CALIFORNIA SHALL PROVIDE DETAIL EQUIPMENT SUPPORT DRAWINGS AND CALCULATIONS AS REQUIRED BY SUBMITTAL SPECIFICATIONS.
- D. "AS-BUILT" DRAWINGS:**
 THE CONTRACTOR SHALL MAINTAIN AT THE JOB SITE AN UP-TO-DATE "AS-BUILT" DRAWING SET. THE "AS-BUILT" DRAWING SET SHALL REFLECT ALL APPROVED CHANGES TO THE DESIGN DRAWINGS AND FIELD CONDITION. THE "AS-BUILT" DRAWING SET SHALL BE KEPT CLEAN AND IN GOOD CONDITION AND SHALL BE TURNED OVER TO THE COR TWO (2) WEEKS AFTER COMPLETION OF THE PROJECT.
- E. FUNCTIONAL TEST AND ACCEPTANCE:**
 UPON COMPLETION OF THE WORK, THE CONTRACTOR SHALL SCHEDULE AND PERFORM A COMPLETE FUNCTIONAL TEST TO DEMONSTRATE TO THE COR THAT THE MECHANICAL SYSTEMS ARE OPERATING AS INTENDED. ANY DEFECTS OR DISCREPANCIES IN THE MATERIAL OR WORK SHALL BE CORRECTED IMMEDIATELY TO THE SATISFACTION OF THE COR AT NO ADDITIONAL COST. NOISY OPERATION AND/OR VIBRATION TRANSMISSION TO THE BUILDING STRUCTURE WILL NOT BE ACCEPTED.
- F. GENERAL REQUIREMENTS:**
- 1) THE WORK INDICATED ON THE PLANS SHALL BE CLOSELY COORDINATED WITH THE PROJECT SPECIFICATIONS AND VA CONSTRUCTION STANDARDS
 - 2) CONTRACTOR SHALL COORDINATE ALL THE WORK AND INTERACTION WITH OTHER TRADES, INCLUDING MECHANICAL, ELECTRICAL, PIPING, AND STRUCTURAL.
 - 3) INSTALLATION OF DIESEL GENERATOR SETS AND ANCILLARY EQUIPMENT SHALL COMPLY WITH ALL APPLICABLE NATIONAL, STATE, AND LOCAL CODES BY THE AUTHORITIES HAVING JURISDICTION, AS WELL AS THE VA GUIDELINES FOR ENERGY CENTERS.
 - 4) MECHANICAL CONTRACTOR SHALL COORDINATE PENETRATIONS IN ROOF, WALLS AND FLOOR WITH THE FIELD CONDITIONS FOR LOCATIONS AND DETAILS. EXAMINE BUILDING DRAWINGS PRIOR TO MAKING ANY BUILDING PENETRATIONS.
 SEE DRAWINGS. CONTRACTOR ARE NOT ALLOWED TO CUT ANY STRUCTURAL STEEL OR WOOD MEMBER WITHOUT WRITTEN PERMISSION FROM THE PROJECT MANAGER. DUCT ROOF OPENINGS AND SUPPORT ARE PERMITTED IN THIS PROJECT.
 - 5) ALL EQUIPMENT SHALL BE INSTALLED IN STRICT ACCORDANCE WITH THE EQUIPMENT MANUFACTURER'S RECOMMENDATIONS. PROVIDE ALL FITTINGS, TRANSITIONS, DAMPERS, AND OTHER DEVICES REQUIRED FOR A COMPLETE WORKABLE INSTALLATION. IN ANY INSTANCE OF DISCREPANCY BETWEEN DESIGN DRAWINGS AND MANUFACTURER'S RECOMMENDATIONS, MANUFACTURER'S RECOMMENDATIONS ARE TO GOVERN DESIGN/INSTALLATION.
 - 6) ALL DUCTWORK SHALL BE CONSTRUCTED, ERECTED, AND TESTED IN ACCORDANCE WITH THE MOST RESTRICTIVE OF LOCAL REGULATIONS, PROCEDURES IN THE ASHRAE HANDBOOK OF FUNDAMENTALS, OR THE APPLICABLE STANDARDS ADOPTED BY THE SHEET METAL AND AIR CONDITIONING CONTRACTORS NATIONAL ASSOCIATION.
 - 7) ALL PIPING SHALL BE PROVIDED WITH LABELS. LABEL SHALL INDICATE NAME OF SERVICE LIQUID OR GAS. IT SHALL INDICATE DIRECTION OF FLOW. LABEL'S COLOR AND SIZE SHALL BE PER PROJECT SPECIFICATIONS.
 - 8) PROTECT THE PUBLIC FROM INJURY DURING THE ENTIRE PROGRESS OF WORK BY POSTING SIGNS, GUARD LIGHTS AND BARRICADES.
 - 9) ALL EQUIPMENT, DUCTS, AND OTHER DEVICES AND MATERIALS INSTALLED OUTSIDE OF THE BUILDING OR OTHERWISE EXPOSED TO THE WEATHER SHALL BE INSULATED AND COMPLETELY WEATHERPROOFED.
 - 10) INSTALL SEISMIC BRACING FOR DUCTS AND EQUIPMENT IN ACCORDANCE WITH CALIFORNIA ADMINISTRATIVE CODE, TITLE 24 AND LATERAL FORCE ANCHORAGE PROVISIONS.
 - 11) DRAWINGS ARE DIAGRAMMATIC AND INDICATE GENERAL ARRANGEMENT OF SYSTEMS AND EQUIPMENT. FIELD MEASUREMENTS TAKE PRECEDENCE OVER DIMENSIONED DRAWING. COORDINATE IN FIELD AS REQUIRED TO LAYOUT NEW SYSTEMS AND EQUIPMENT SO AS NOT TO DISTURB EXISTING SYSTEMS AND EQUIPMENT TO REMAIN.
 - 12) AIR BALANCE EQUIPMENT TO CAPACITY INDICATED IN EQUIPMENT SCHEDULE.
 - 13) DEBRIS SHALL BE REMOVED FROM THE PREMISES ON A DAILY BASIS. DO NOT ALLOW DEBRIS TO ACCUMULATE. PROTECT ADJACENT BUILDING AREAS FROM DUST AND DEBRIS.
 - 14) THE DUCT SYSTEMS SHALL BE CONSTRUCTED PER CMC 602.5 TABLES NOS. 6-1, 6-2 AND 6-3 PER CMC STANDARD 6-1 OR 6-2. FLEXIBLE FACTORY-MADE AIR DUCTS SHALL BE CLASS 0 OR CLASS 1 MEET ALL REQUIREMENTS OF CMC 604.2.
 - 15) MATERIAL EXPOSED WITHIN DUCTS OR PLENUM SHALL HAVE A FLAME-SPREAD INDEX OF NOT MORE THAN 25 AND SMOKE DEVELOPED RATING OF NOT MORE THAN 50 FOR MATERIAL EXPOSED WITHIN THE DUCT/PLENUM AND/OR INSULATION MATERIALS APPLIED TO THE EXTERIOR OF THE DUCTS LOCATED IN THE BUILDING. CMC 602.2 AND/OR 605.0.
 - 16) ALL NEW HVAC EQUIPMENT SHALL BE LISTED BY A NATIONALLY RECOGNIZED UL LISTED AND PROPERLY LABELED, AND PROVIDE MANUFACTURER'S CUTSHEETS AND SPECIFICATION FOR EACH UNIT.
 - 17) MECHANICAL CONTRACTOR SHALL LABEL ALL PIPING AND DUCT WORKS INSTALLATION. LABEL SHALL BE INSTALLED AT EVERY 20 LINEAR FEET WITH IDENTIFICATION AND DIRECTION OF FLOW.
 - 18) ALL DIMENSIONS ARE IN INCHES, UNLESS SHOWN OTHERWISE.
 - 19) PROVIDE AUTOMATIC AIR VENTS IN ALL PIPING AT HIGH POINTS AND PROVIDE VALVED DRAIN CONNECTIONS AT LOW POINTS. RUN VENTS AND DRAINS TO ACCESSIBLE LOCATIONS.
 - 20) BRACE ALL PIPING AND MECHANICAL EQUIPMENT AND SUPPORT IN ACCORDANCE WITH DRAWINGS AND THE LATEST SMACNA GUIDELINES.
 - 21) MAKE CONNECTIONS BETWEEN COPPER AND IRON OR STEEL PIPES WITH DIELECTRIC CONNECTORS.
 - 22) SEAL AROUND ALL PIPES AND DUCTS PENETRATING FIRE RATED WALLS WITH A U.L. LISTED FIRE-STOPPING SYSTEM. SEAL SMOKE TIGHT ALL PIPE PENETRATIONS.
 - 23) THE CONTROL CONTRACTOR SHALL PROVIDE ALL WIRING AND CONDUIT FROM JUNCTION BOXES TO ALL CONTROL PANELS AND DEVICES PART OF THE CONTROL SYSTEM. ALL WIRING AND CONDUIT SHALL BE IN ACCORDANCE WITH THE ELECTRICAL SPECIFICATIONS.
 - 24) THE CONTROL CONTRACTOR SHALL BE RESPONSIBLE FOR THE SUPPORT OF ALL CONTROL DEVICES, CONDUIT AND PANEL ASSEMBLIES AS NOTED HEREIN, AND IN THE SPECIFICATION AS REQUIRED TO PROVIDE ADEQUATE MAINTENANCE AND CLEARANCE PER CODE AND MANUFACTURER'S RECOMMENDATIONS.
 - 25) DAMPER'S ACTUATORS AND CONTROL VALVES WITH ACTUATORS SHALL BE PROVIDED BY CONTROL TRADE CONTRACTOR (U.O.N.).
 - 26) CONTRACTOR SHALL PROVIDE SHOP DRAWINGS AND SEQUENCE OF OPERATION FOR APPROVAL BY COR BEFORE COMMENCING THE JOB.
 - 27) ALL DUCTING PENETRATING THE ROOF OR WALL SHALL BE INSULATED FOR SOUND ATTENUATION.

GENERAL SYMBOLS



NOTE: ALL VALVES TO BE POSITION INDICATING VALVES. NO GATE VALVES ALLOWED.

ABBREVIATIONS

ABBR.	DESCRIPTION
AI	ANALOG INPUT
AO	ANALOG OUTPUT
CONC	CONCRETE
CW	CITY WATER
DET	DETAIL
DI	DIGITAL INPUT
DO	DIGITAL OUTPUT
DWG	DRAWING
EA	EACH
ELECT	ELECTRICAL
ELEV	ELEVATION
EMER	EMERGENCY
(E)	EXISTING
FOF	FILL OIL FUEL LINE
FOFS	FUEL OIL FILTRATION SUPPLY
FOFR	FUEL OIL FILTRATION RETURN
FOR	FUEL OIL RETURN
FOS	FUEL OIL SUPPLY
FOV	FUEL OIL VENT
FP	FUEL PUMP
FS	FILTRATION SYSTEM/FLOW SWITCH
GA	GAUGE
MIN	MINIMUM
MAX	MAXIMUM
(N)	NEW
PDT	PRESSURE DIFFERENTIAL TRANSMITTER
PSI	POUND PER SQUARE INCH
RPM	REVOLUTIONS PER MINUTE
TEMP	TEMPERATURE
TE	TEMPERATURE ELEMENT
TSTAT	THERMOSTAT
TT	TEMPERATURE TRANSMITTER
TYP	TYPICAL
WC	WATER COLUMN
WG	WATER GAUGE

CONSTRUCTION DOCUMENTS

Revisions:	Date
FINAL BID DOCUMENTS (15-411)	6/22/17
100% CONSTRUCTION DOCUMENTS (15-410)	6/15/17
100% DESIGN DEVELOPMENT (15-407)	5/12/17
50% DESIGN DEVELOPMENT (15-401)	4/13/17
100% SCHEMATIC DESIGN (15-391)	3/10/17
65% DESIGN DEVELOPMENT (15-354)	11/30/16
15% DESIGN REPORT (15-269)	5/5/16

CONSULTANTS:

CONSULTANTS:	KEY PLAN	STAMP	ARCHITECT/ENGINEERS:

ARCHITECT/ENGINEERS:

ATTENTION:
 ONLY WET SIGNED DOCUMENTS CONSTITUTE ADVANCE DESIGN CONSULTANTS, INC. PROFESSIONAL WORK AND BECAUSE OTHER REPRODUCIBLE DOCUMENTS MAY BE EASILY ALTERED WITHOUT THE CONSENT OF ADVANCE DESIGN CONSULTANTS, INC. THE WET SIGNED DOCUMENTS MUST BE REFERRED TO FOR THE ORIGINAL AND CORRECT INFORMATION. IF THERE ARE ANY DIFFERENCES BETWEEN THE WET SIGNED DOCUMENTS AND ANY OTHER DOCUMENTS, THE WET SIGNED DOCUMENTS SHALL GOVERN.
 ADVANCE DESIGN CONSULTANTS, INC. IS NOT RESPONSIBLE FOR ANY MODIFICATIONS MADE TO OUR DOCUMENTS BY ANYONE OTHER THAN AUTHORIZED REPRESENTATIVES OF ADVANCE DESIGN CONSULTANTS, INC.
 PR# 15-308-55

Drawing Title
MECHANICAL NOTES, SYMBOLS + ABBREVIATIONS

Approved: Project Director

Project Title
PAD B100/101 EMERGENCY POWER UPGRADE

Location
3801 MIRANDA AVE, PALO ALTO, CA

Date
6/22/2017

Checked
L. RIOS

Drawn
J. ROTHWEN

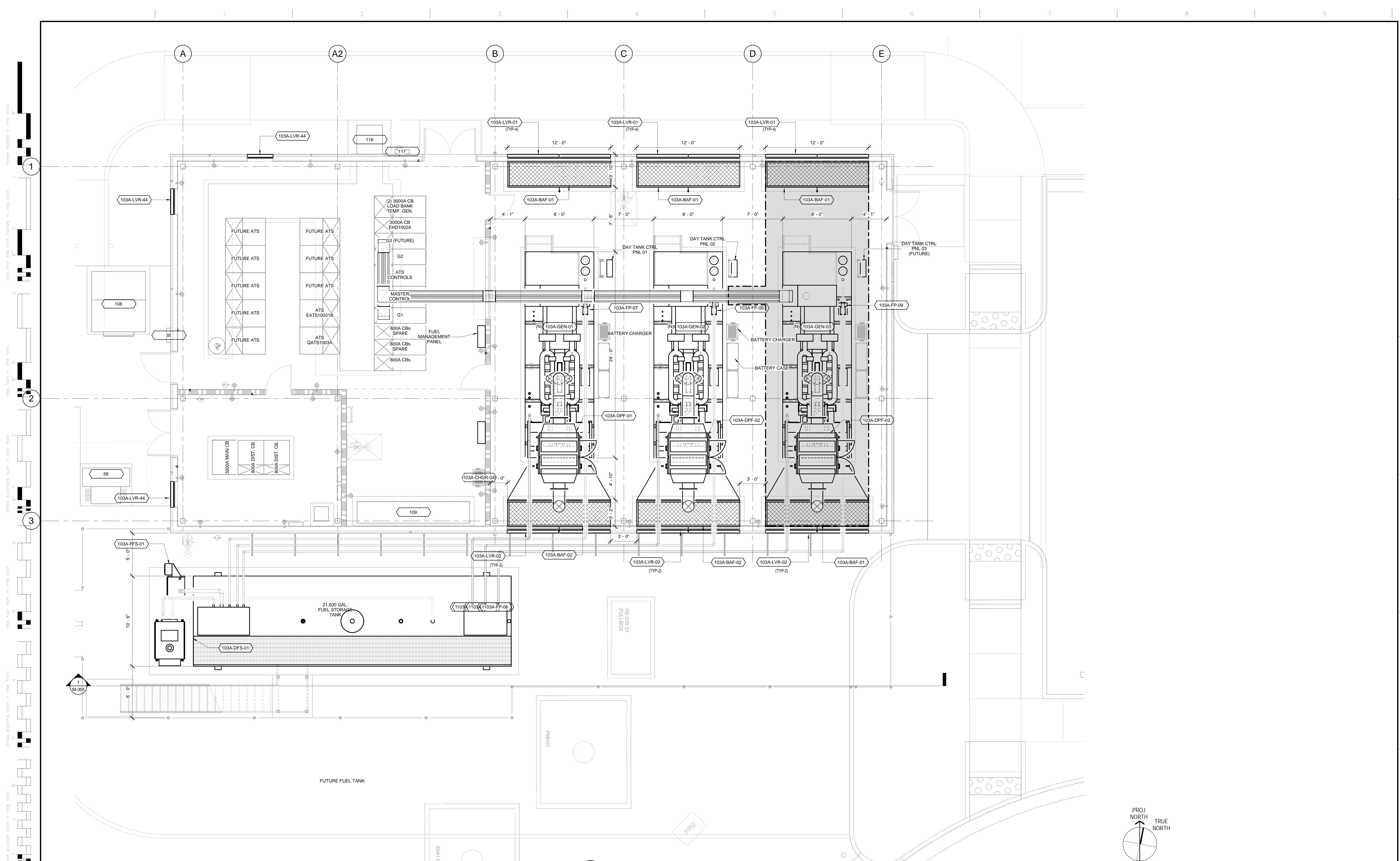
Project Number
640-15-158

Building Number
B103A

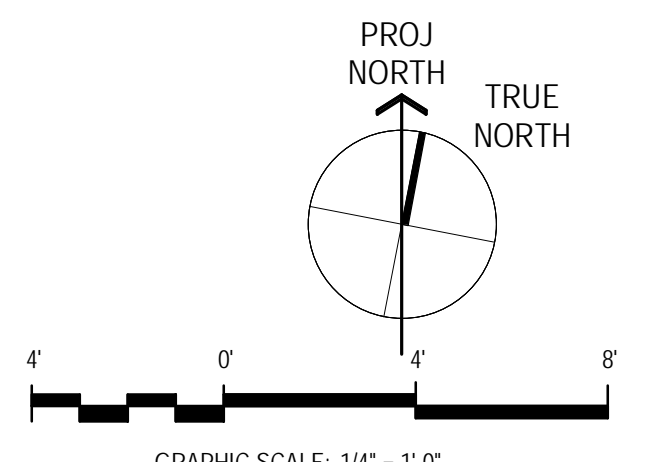
Drawing Number
M-001

Office of Facilities Management

Department of Veterans Affairs



1 B103A MECHANICAL PLAN
SCALE: 1/4" = 1'-0"



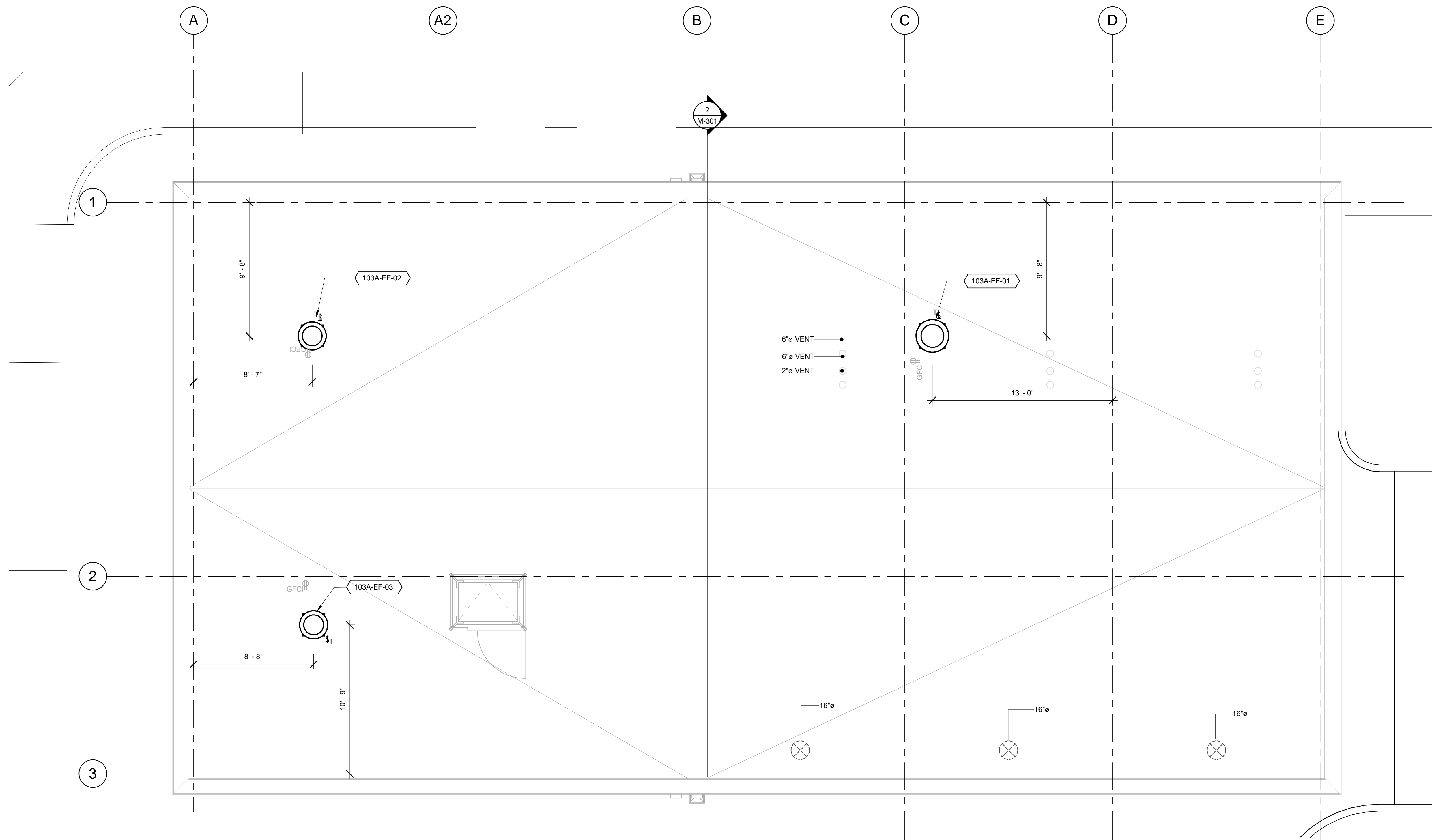
CONSTRUCTION DOCUMENTS

FINAL BID DOCUMENTS (15-411)	6/22/17
100% CONSTRUCTION DOCUMENTS (15-410)	6/15/16
100% DESIGN DEVELOPMENT (15-307)	05/12/17
50% DESIGN DEVELOPMENT (15-401)	4/13/17
100% SCHEMATIC DESIGN (15-391)	3/10/17
65% DESIGN DEVELOPMENT (15-354)	11/30/16
15% DESIGN REPORT (15-269)	5/5/16
Revisions:	Date

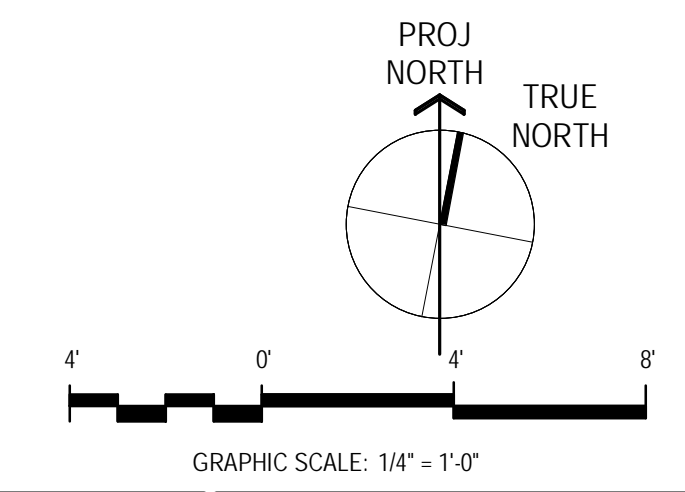
CONSULTANTS: 	KEY PLAN	STAMP	ARCHITECT/ENGINEERS ADVANCE DESIGN CONSULTANTS, INC. 998 PARK AVENUE SAN JOSE CALIFORNIA 95128 P: (408) 287-1881 F: (408) 294-3186 www.adcengineers.com <small>POB 15-308-55</small>	Drawing Title: MECHANICAL B013A MECHANICAL PLAN	Project Title: PAD B100/101 EMERGENCY POWER UPGRADE	Project Number: 640-15-158	Office of Facilities Management Department of Veterans Affairs
				Approved Project Director	Location: 3801 MIRANDA AVE, PALO ALTO, CA	Building Number: B103A	

three inches = one foot
 one and one half inches = one foot
 one inch = one foot
 three quarters inch = one foot
 one half inch = one foot
 three eighths inch = one foot
 one quarter inch = one foot
 one eighth inch = one foot

three inches = one foot
 one and one half inches = one foot
 one inch = one foot
 three quarters inch = one foot
 one half inch = one foot
 three eighths inch = one foot
 one quarter inch = one foot
 one eighth inch = one foot



1 B103A MECHANICAL ROOF PLAN
SCALE: 1/4" = 1'-0"

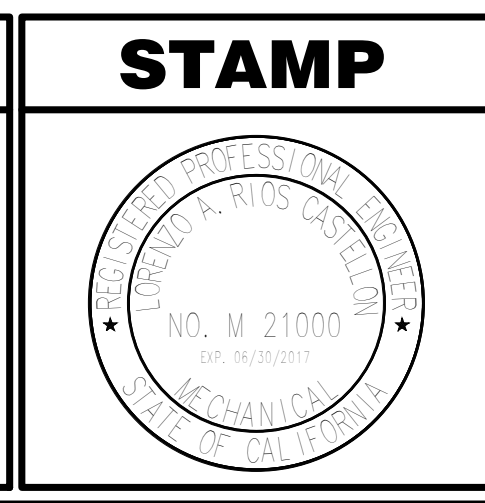


CONSTRUCTION DOCUMENTS

100% CONSTRUCTION DOCUMENTS (15-410)	6/15/16
100% DESIGN DEVELOPMENT (15-307)	05/12/17
50% DESIGN DEVELOPMENT (15-401)	4/13/17
100% SCHEMATIC DESIGN (15-391)	3/10/17
65% DESIGN DEVELOPMENT (15-354)	11/30/16
15% DESIGN REPORT (15-269)	5/5/16
Revisions:	Date

CONSULTANTS:	
---------------------	--

KEY PLAN	
-----------------	--



ARCHITECT/ENGINEERS

ADVANCE DESIGN CONSULTANTS, INC.

998 PARK AVENUE SAN JOSE CALIFORNIA 95128
P: (408) 287-1881 F: (408) 294-3186 www.adcengineers.com

ATTENTION: ONLY WET SIGNED DOCUMENTS CONSTITUTE ADVANCE DESIGN CONSULTANTS, INC. PROFESSIONAL WORK AND BECAUSE OTHER RESPONSIBLE DOCUMENTS MAY BE EASILY ALTERED WITHOUT THE CONSENT OF ADVANCE DESIGN CONSULTANTS, INC. THE WET SIGNED DOCUMENTS MUST BE REFERRED TO FOR THE ORIGINAL AND CORRECT INFORMATION. IF THERE ARE ANY DIFFERENCES BETWEEN THE WET SIGNED DOCUMENTS AND ANY OTHER DOCUMENTS, THE WET SIGNED DOCUMENTS SHALL GOVERN.

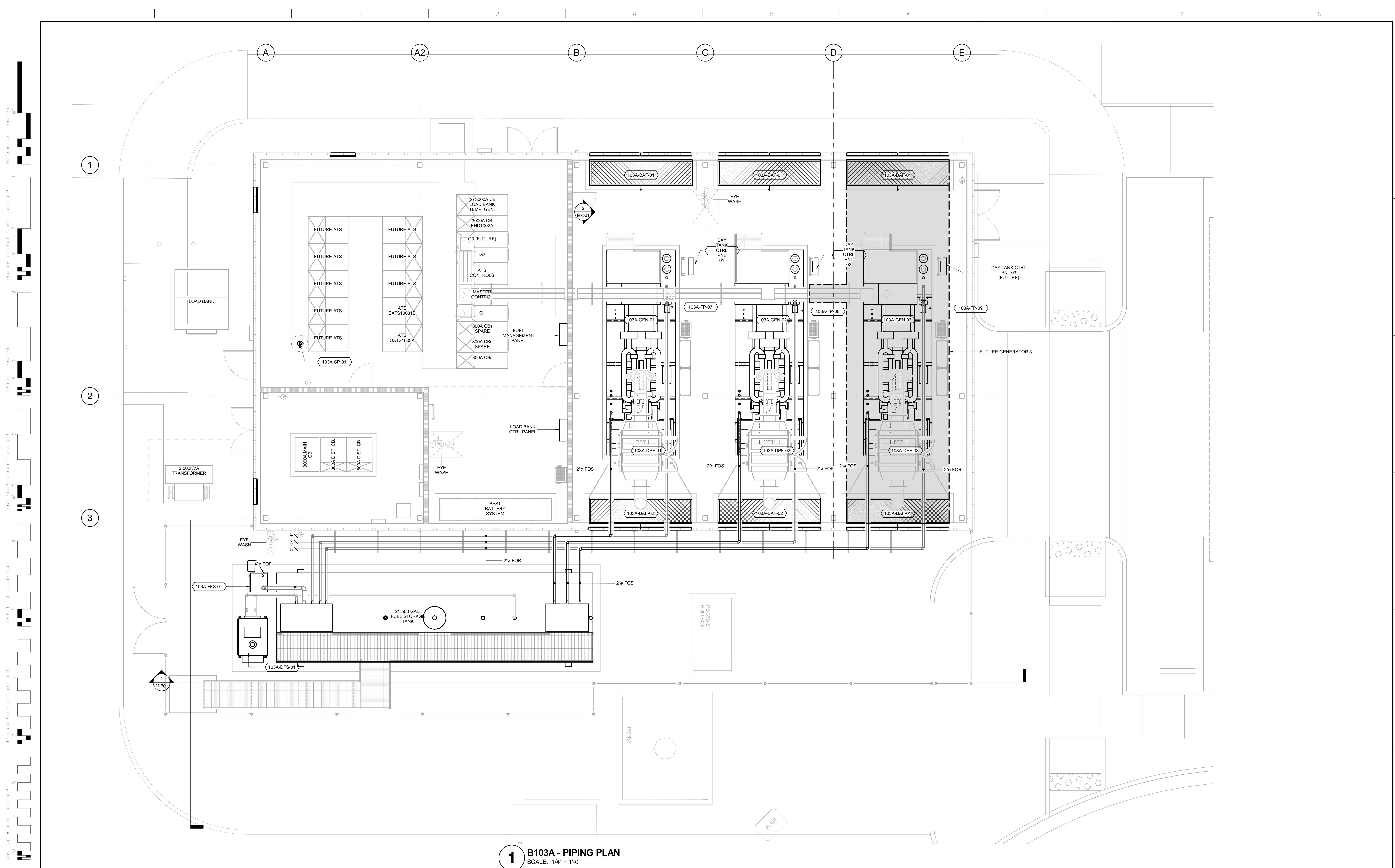
Drawing Title: MECHANICAL B103A MECHANICAL ROOF PLAN
Approved Project Director

Drawing Title: PAD B100/101 EMERGENCY POWER UPGRADE		
Location: 3801 MIRANDA AVE, PALO ALTO, CA		
Date: 6/15/16	Checked: D. HAMMOND	Drawn: J. AGUIRRE

Project Number: 640-15-158
Building Number: B103A
Drawing Number: M-102
Dwg. of

Office of
Facilities
Management

Department of
Veterans Affairs



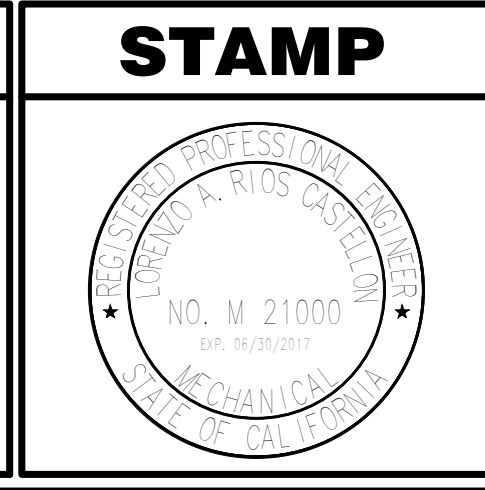
1 B103A - PIPING PLAN
SCALE: 1/4" = 1'-0"

CONSTRUCTION DOCUMENTS

100% CONSTRUCTION DOCUMENTS (15-410)	6/15/16
100% DESIGN DEVELOPMENT (15-307)	05/12/17
50% DESIGN DEVELOPMENT (15-401)	4/13/17
100% SCHEMATIC DESIGN (15-391)	3/10/17
65% DESIGN DEVELOPMENT (15-354)	11/30/16
15% DESIGN REPORT (15-269)	5/5/16
Revisions:	Date

CONSULTANTS:	

KEY PLAN	



ARCHITECT/ENGINEERS

ADVANCE DESIGN CONSULTANTS, INC.

998 PARK AVENUE SAN JOSE CALIFORNIA 95128
P: (408) 287-1881 F: (408) 294-3186 www.adcengineers.com

ATTENTION: ONLY WET SIGNED DOCUMENTS CONSTITUTE ADVANCE DESIGN CONSULTANTS, INC. PROFESSIONAL WORK AND BECAUSE OTHER REPRODUCIBLE DOCUMENTS MAY BE EASILY ALTERED WITHOUT THE CONSENT OF ADVANCE DESIGN CONSULTANTS, INC. THE WET SIGNED DOCUMENTS MUST BE REFERRED TO FOR THE ORIGINAL AND CORRECT INFORMATION. IF THERE ARE ANY DIFFERENCES BETWEEN THE WET SIGNED DOCUMENTS AND ANY OTHER DOCUMENTS, THE WET SIGNED DOCUMENTS SHALL GOVERN.

ADVANCE DESIGN CONSULTANTS, INC. IS NOT RESPONSIBLE FOR ANY MODIFICATIONS MADE TO OUR DOCUMENTS BY ANYONE OTHER THAN AUTHORIZED REPRESENTATIVES OF ADVANCE DESIGN CONSULTANTS, INC.

PO# 15-308-55

Drawing Title: MECHANICAL B103A - NEW PIPING PLAN
Approved Project Director

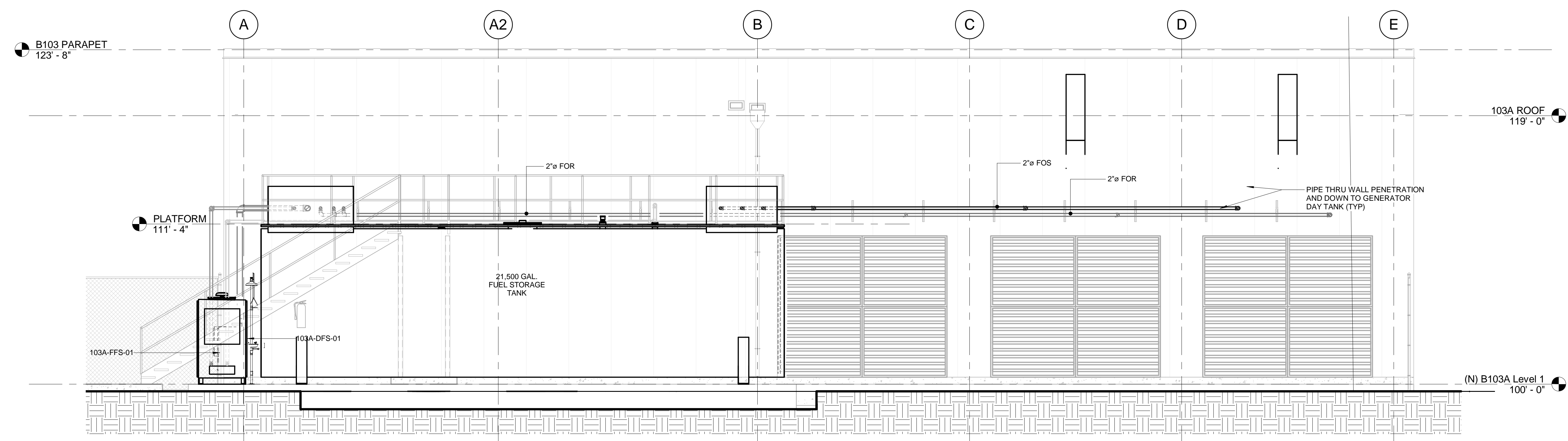
Project Title: PAD B100/101 EMERGENCY POWER UPGRADE	Project Number: 640-15-158
Location: 3801 MIRANDA AVE, PALO ALTO, CA	Building Number: B103A
Date: 6/15/16	Checked: D. HAMMOND
	Drawn: J. AGUIRRE
	Dwg. of M-103

Office of
Facilities
Management

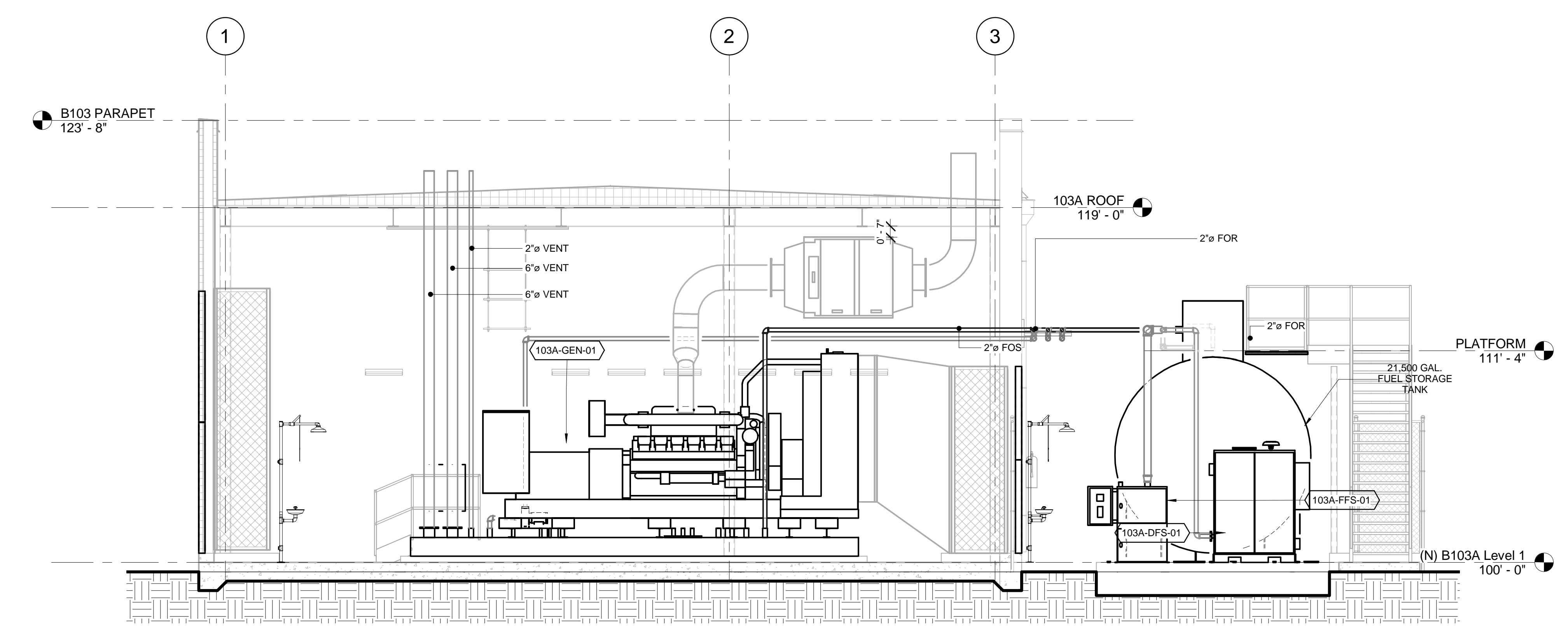
Department of
Veterans Affairs

one eighth inch = one foot
one quarter inch = one foot
one half inch = one foot
three eighths inch = one foot
one inch = one foot
one and one half inches = one foot
two inches = one foot
three quarters inch = one foot
three eighths inch = one foot
one half inch = one foot
one quarter inch = one foot
one eighth inch = one foot

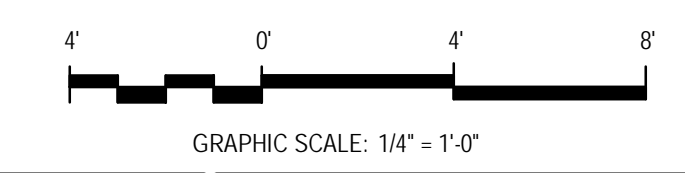
three inches = one foot
 one and one half inches = one foot
 one inch = one foot
 three quarters inch = one foot
 one half inch = one foot
 three eighths inch = one foot
 one quarter inch = one foot
 one eighth inch = one foot



1 FUEL TANK AND PIPING SECTION
SCALE: 1/4" = 1'-0"



2 B103A GENERATOR ROOM SECTION
SCALE: 1/4" = 1'-0"

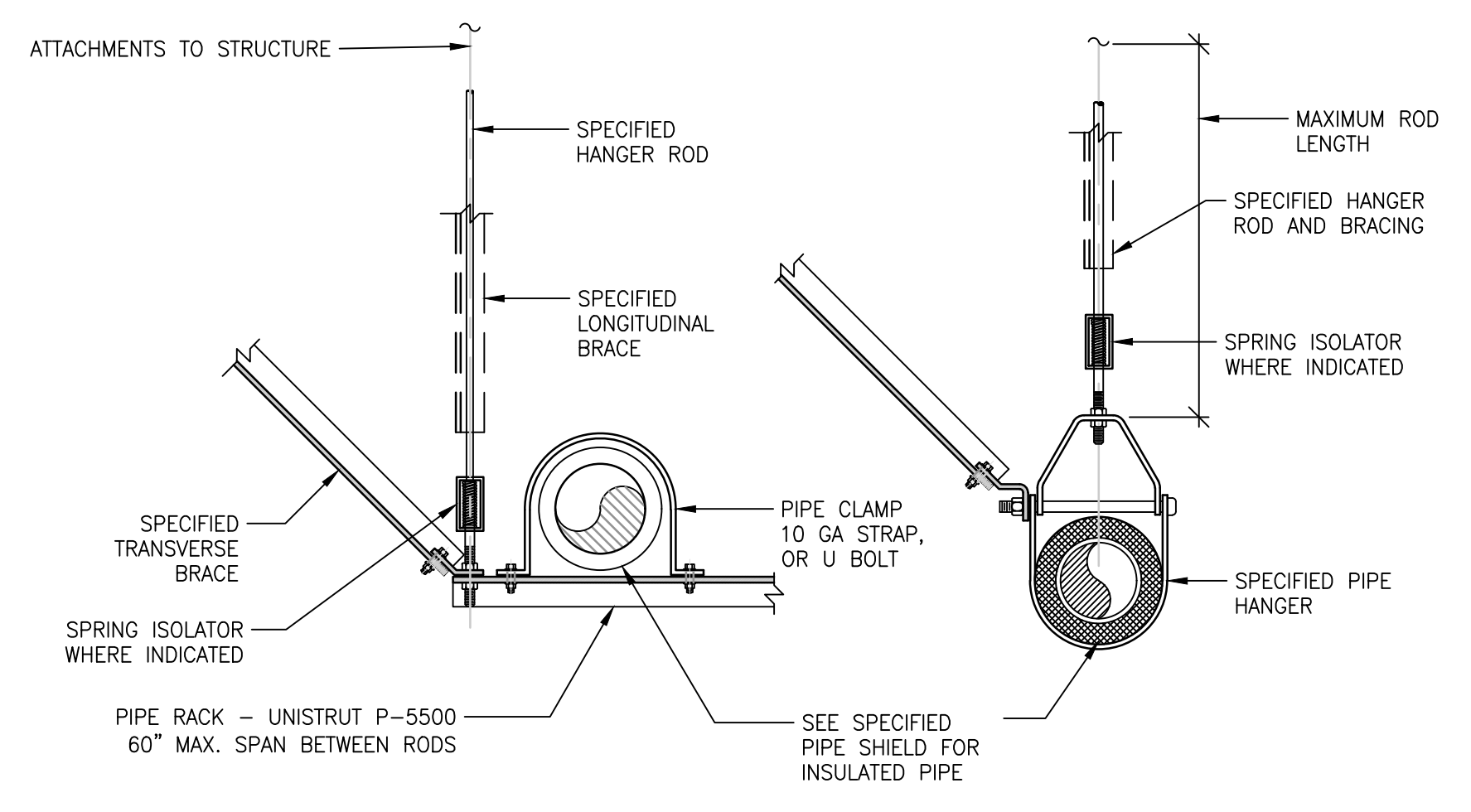


CONSTRUCTION DOCUMENTS

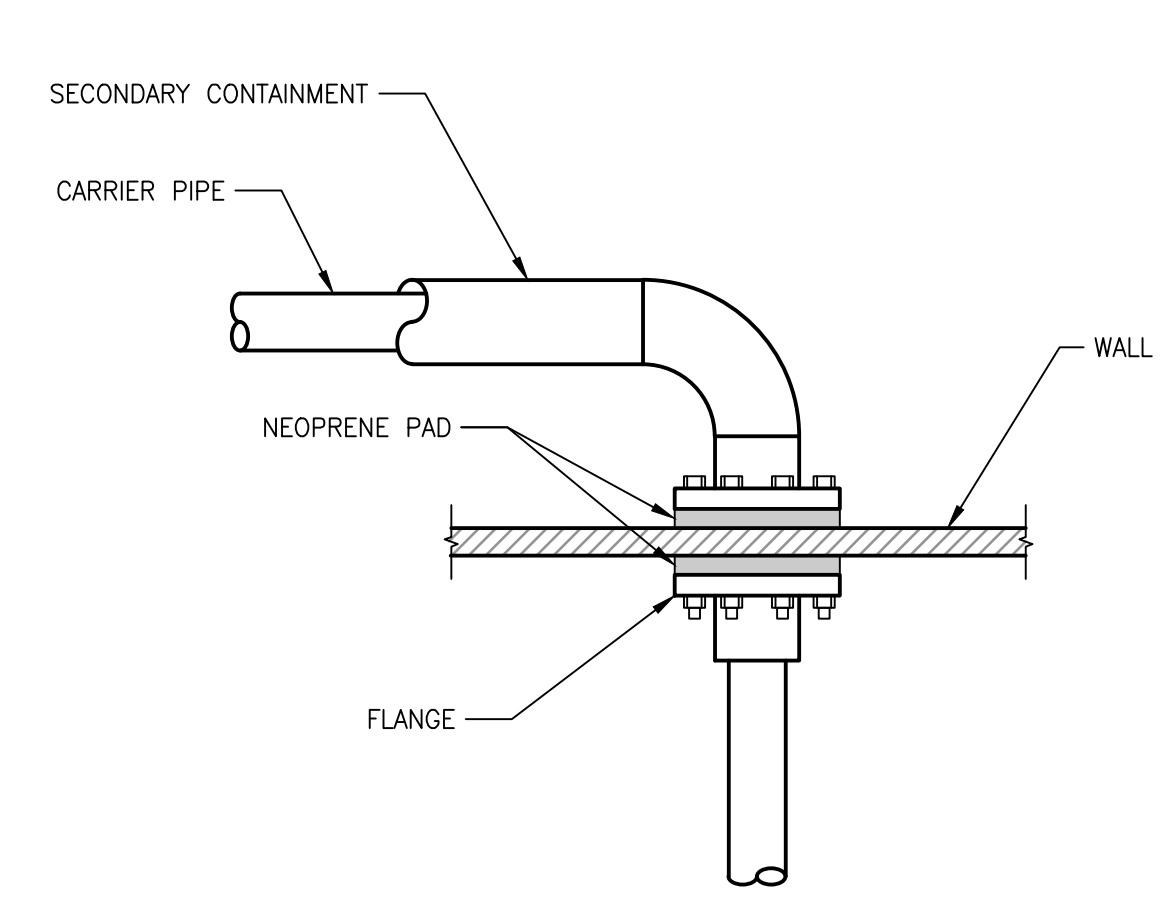
FINAL BID DOCUMENTS (15-411)	6/22/17
100% CONSTRUCTION DOCUMENTS (15-410)	6/15/16
100% DESIGN DEVELOPMENT (15-307)	05/12/17
50% DESIGN DEVELOPMENT (15-401)	4/13/17
100% SCHEMATIC DESIGN (15-391)	3/10/17
65% DESIGN DEVELOPMENT (15-354)	11/30/16
15% DESIGN REPORT (15-269)	5/5/16
Revisions:	Date

CONSULTANTS:	KEY PLAN	STAMP	ARCHITECT/ENGINEERS	Drawing Title: MECHANICAL B103A SECTIONS		Project Title: PAD B100/101 EMERGENCY POWER UPGRADE		Project Number: 640-15-158		
				Approved Project Director		Location: 3801 MIRANDA AVE, PALO ALTO, CA		Building Number: B103A		Office of Facilities Management
			<p>ADVANCE DESIGN CONSULTANTS, INC.</p> <p>998 PARK AVENUE SAN JOSE CALIFORNIA 95128 P: (408) 287-1881 F: (408) 294-3186 www.adcengineers.com</p>		<p>ATTENTION: ONLY WET SIGNED DOCUMENTS CONSTITUTE ADVANCE DESIGN CONSULTANTS, INC. PROFESSIONAL WORK AND BECAUSE OTHER RESPONSIBLE DOCUMENTS MAY BE EASILY ALTERED WITHOUT THE CONSENT OF ADVANCE DESIGN CONSULTANTS, INC. THE WET SIGNED DOCUMENTS MUST BE REFERRED TO FOR THE ORIGINAL AND CORRECT INFORMATION. IF THERE ARE ANY DIFFERENCES BETWEEN THE WET SIGNED DOCUMENTS AND ANY OTHER DOCUMENTS, THE WET SIGNED DOCUMENTS SHALL GOVERN.</p> <p>ADVANCE DESIGN CONSULTANTS, INC. IS NOT RESPONSIBLE FOR ANY MODIFICATIONS MADE TO OUR DOCUMENTS BY ANYONE OTHER THAN AUTHORIZED REPRESENTATIVES OF ADVANCE DESIGN CONSULTANTS, INC.</p>		<p>DATE: 6/22/17</p> <p>CHECKED: []</p> <p>CHECKER: []</p>		<p>DRAWN: []</p> <p>AUTHOR: []</p>	
					<p>GRAPHIC SCALE: 1/4" = 1'-0"</p>		<p>Dwg. of</p>		<p>Department of Veterans Affairs</p>	

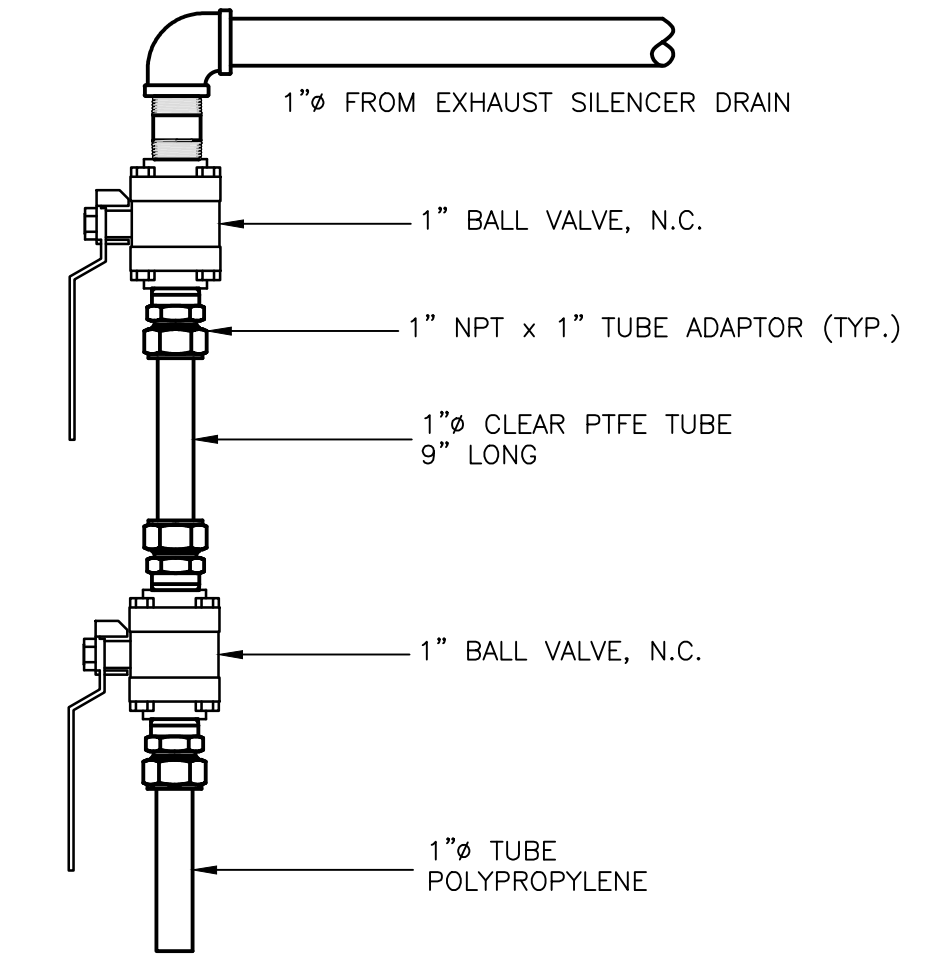
three inches = one foot
 one and one half inches = one foot
 one inch = one foot
 one inch = one foot
 one inch = one foot
 three quarters inch = one foot
 one half inch = one foot
 one half inch = one foot
 three eighths inch = one foot
 one quarter inch = one foot
 one eighth inch = one foot
 one eighth inch = one foot



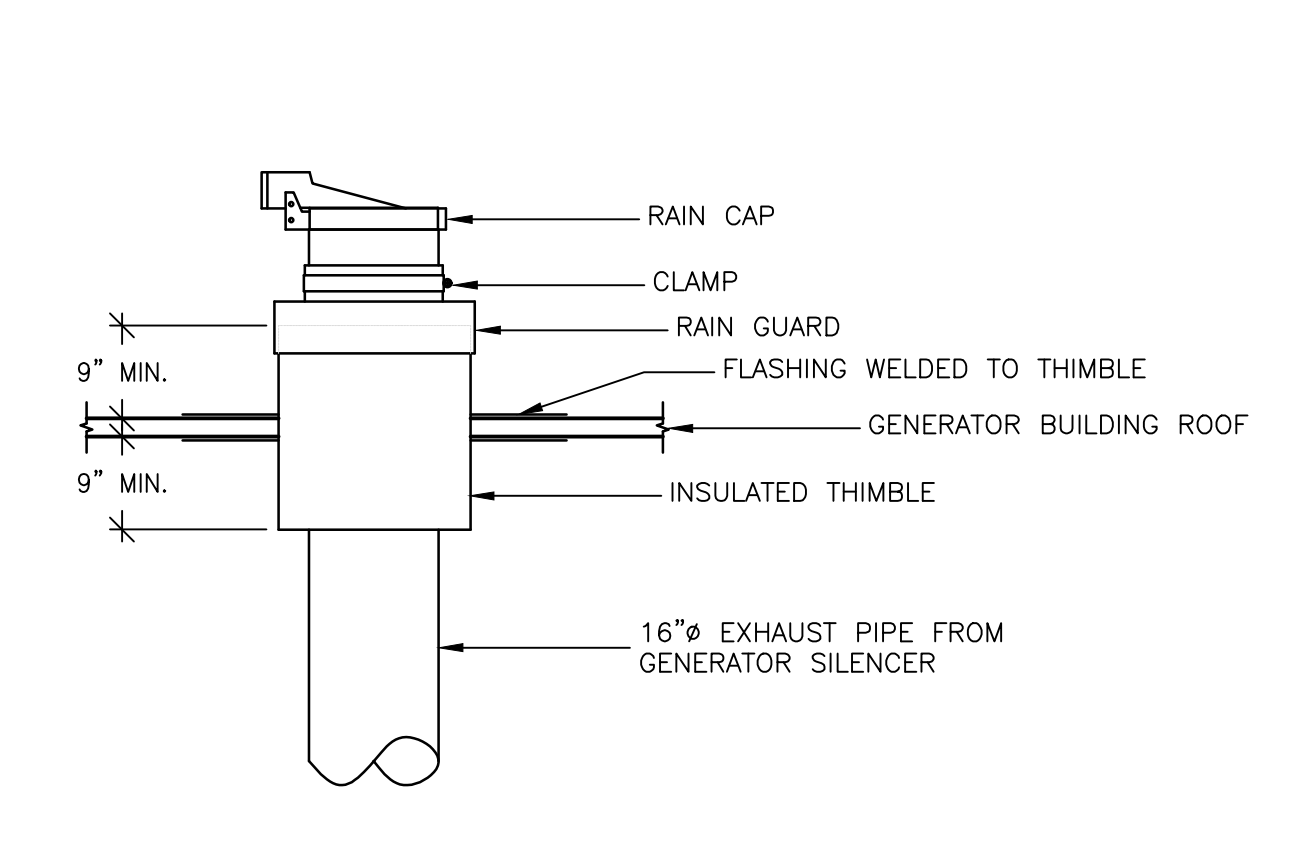
1 PIPE SUPPORT AND BRACING DETAIL
 SCALE: N.T.S.



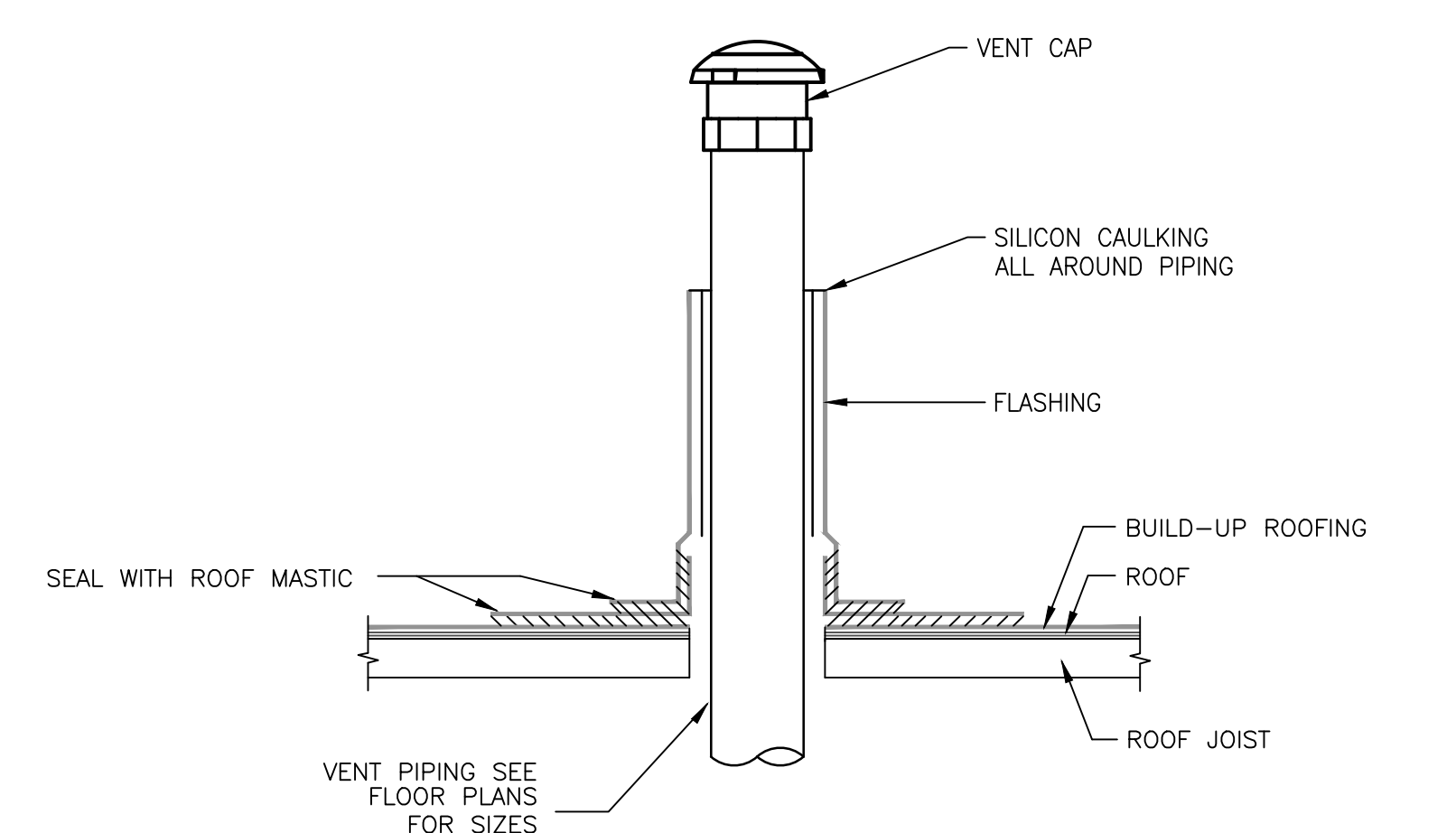
2 PIPE PENETRATION DETAIL
 SCALE: N.T.S.



3 EXHAUST DRIP LEG DETAIL
 SCALE: N.T.S.

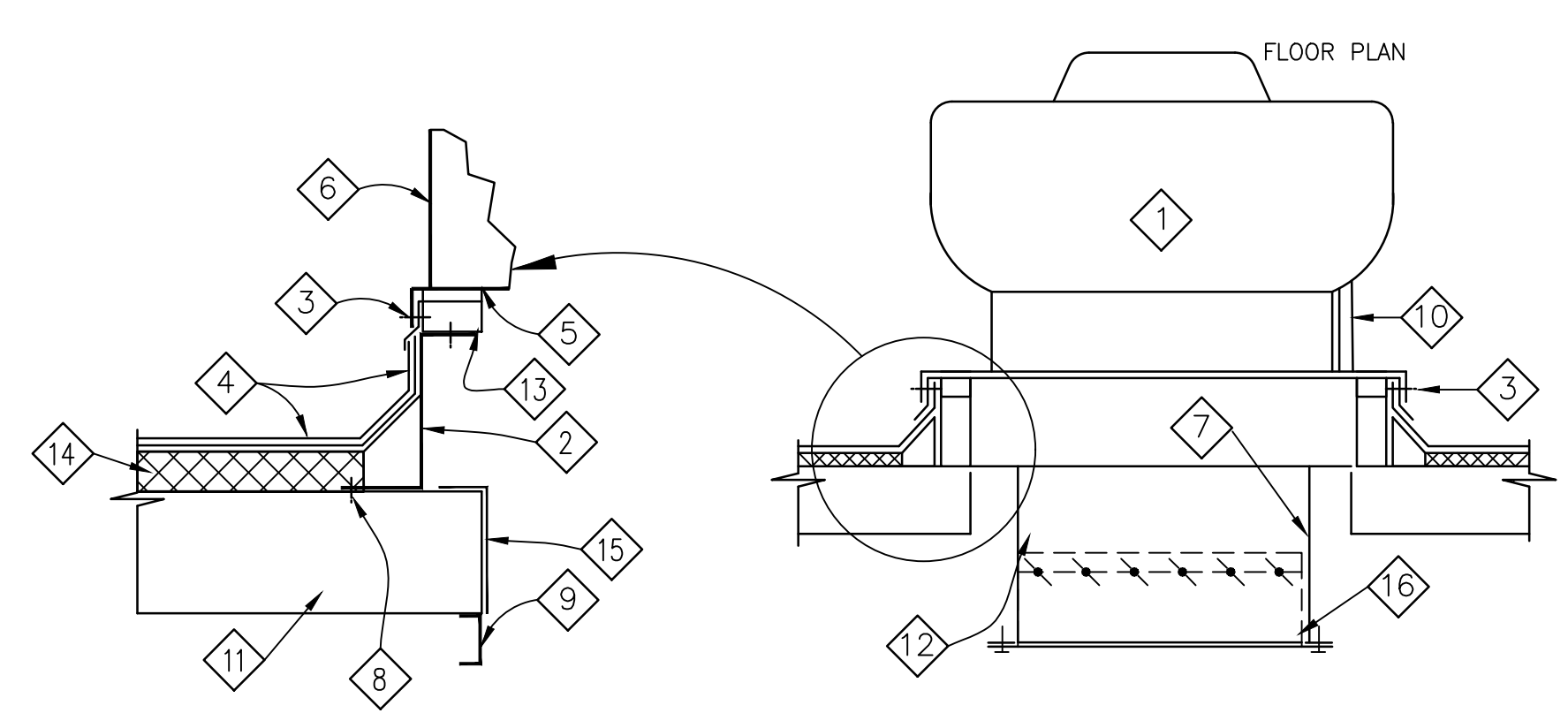


4 EXHAUST THIMBLE DETAIL
 SCALE: N.T.S.



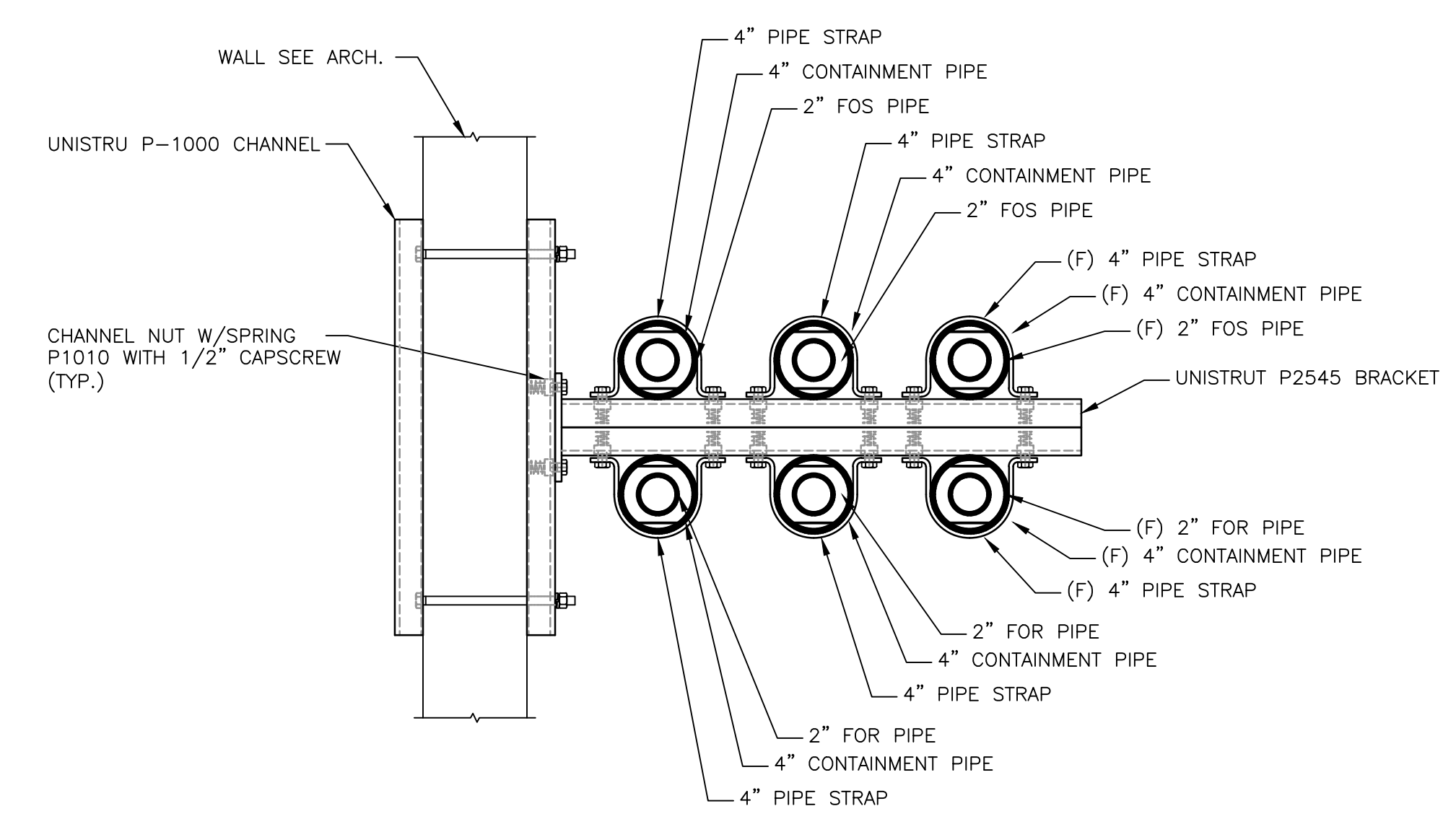
5 EFOV/FOV THRU ROOF DETAIL
 SCALE: N.T.S.

NOTE:
 1. COORDINATE ROOF PENETRATION AND FRAMING WITH THE GENERAL CONTRACTOR
 2. ROOFING BY THE GENERAL CONTRACTOR.



- 1 EXHAUST FAN
- 2 PREFABRICATED CANTED CURB SUPPLIED WITH FAN.
- 3 SECURE UNIT BASE TO PRE-FAB CURB WITH 1/4" DIAMETER x 1-1/4" LONG LAG SCREWS AT 18" O.C.
- 4 ROOFING & FLASHING.
- 5 CURB GASKET FURNISHED BY CURB MFR.
- 6 UNIT BASE
- 7 SEE FLOOR PLAN FOR DUCT SIZE. SECURE DUCT TO FRAMING.
- 8 SECURE PRE-FAB CURB TO ROOF DECK W/HEAVY SELF-DRILLING SCREWS @ 12" O.C. (MAX.)
- 9 FOR OPENING REINFORCEMENT SEE STRUCTURAL DRAWING.
- 10 WIRE PIPE CHASE BY FAN MFR.
- 11 CORRUGATED METAL DECK.
- 12 BACKDRAFT DAMPER
- 13 WOOD NAILER
- 14 INSULATION
- 15 ROOF DECK CORRUGATION CLOSURE, 18 GA. WELDED CONTINUOUSLY
- 16 1/2" x 1/2" BIRDSCREEN

5 EXHAUST FAN MOUNTING DETAIL
 SCALE: N.T.S.



6 PIPE SUPPORT ON WALL DETAIL
 SCALE: N.T.S.

CONSTRUCTION DOCUMENTS

FINAL BID DOCUMENTS (15-411)	6/22/17
100% CONSTRUCTION DOCUMENTS (15-410)	6/15/17
100% DESIGN DEVELOPMENT (15-407)	5/12/17
50% DESIGN DEVELOPMENT (15-401)	4/13/17
100% SCHEMATIC DESIGN (15-391)	3/10/17
65% DESIGN DEVELOPMENT (15-354)	11/30/16
15% DESIGN REPORT (15-269)	5/5/16
Revisions:	Date

CONSULTANTS:

KEY PLAN

STAMP

ARCHITECT/ENGINEERS:

988 PARK AVENUE SAN JOSE CALIFORNIA 95128
 P: (408) 297-1881 F: (408) 294-3186 www.adcengineers.com
 PR# 15-308-55

ATTENTION:
 ONLY NET SIGNED DOCUMENTS CONSTITUTE ADVANCE DESIGN CONSULTANTS, INC. PROFESSIONAL WORK AND BECAUSE OTHER REPRODUCIBLE DOCUMENTS MAY BE EASILY ALTERED WITHOUT THE CONSENT OF ADVANCE DESIGN CONSULTANTS, INC., THE NET SIGNED DOCUMENTS MUST BE REFERRED TO FOR THE ORIGINAL AND CORRECT INFORMATION. IF THERE ARE ANY DIFFERENCES BETWEEN THE NET SIGNED DOCUMENTS AND ANY OTHER DOCUMENTS, THE NET SIGNED DOCUMENTS SHALL GOVERN.
 ADVANCE DESIGN CONSULTANTS, INC. IS NOT RESPONSIBLE FOR ANY MODIFICATIONS MADE TO OUR DOCUMENTS BY ANYONE OTHER THAN AUTHORIZED REPRESENTATIVES OF ADVANCE DESIGN CONSULTANTS, INC.

Drawing Title
EMERGENCY/STAND-BY POWER MECHANICAL DETAILS

Approved: Project Director

Project Title
PAD B100/101 EMERGENCY POWER UPGRADE

Location
3801 MIRANDA AVE, PALO ALTO, CA

Date
6/22/2017

Checked
 -

Drawn
 -

Project Number
640-15-158

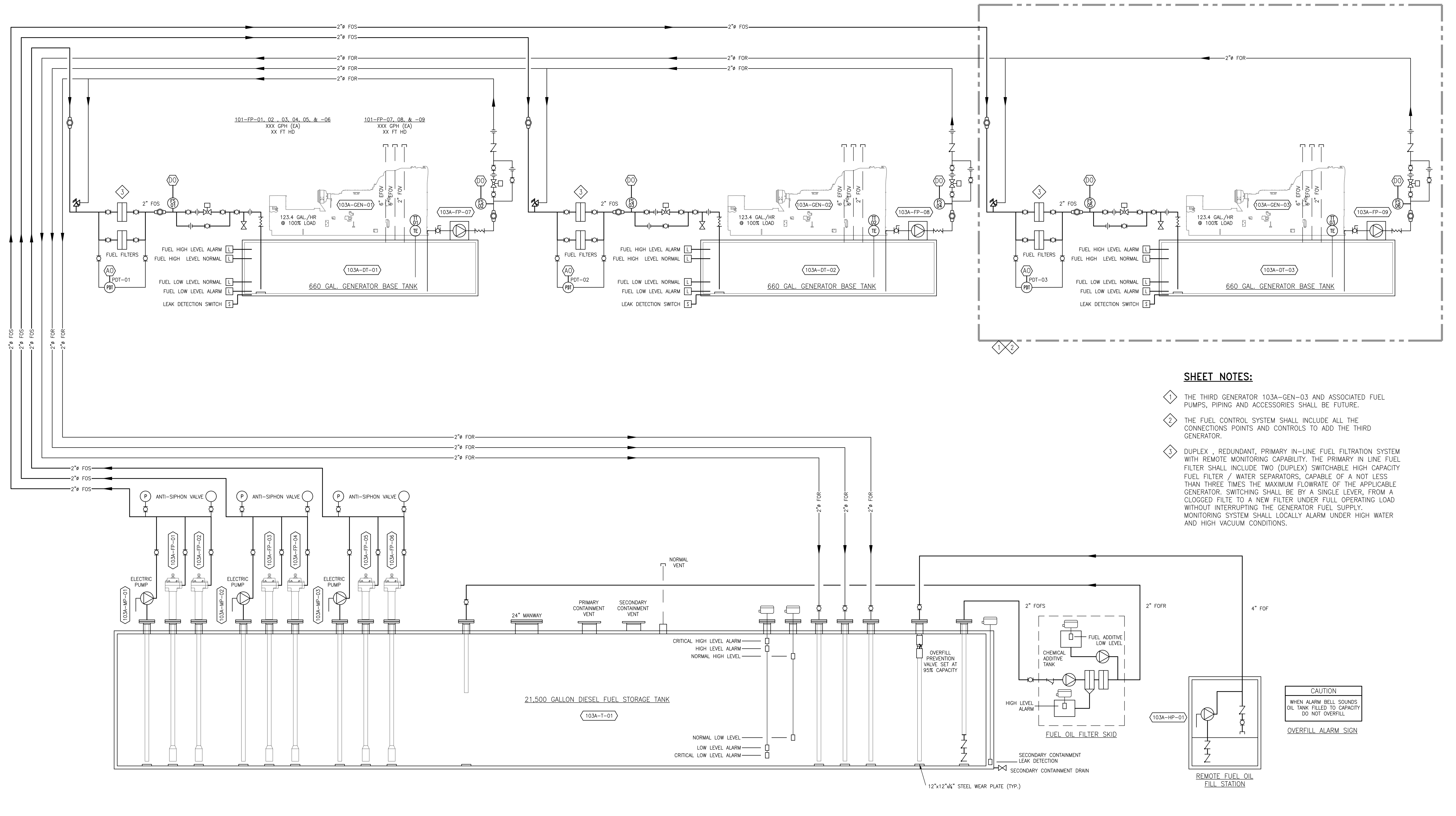
Building Number
B103A

Drawing Number
M-501

Office of Facilities Management

Department of Veterans Affairs

three inches = one foot
 one and one half inches = one foot
 one inch = one foot
 three quarters inch = one foot
 one half inch = one foot
 three eighths inch = one foot
 one eighth inch = one foot
 one quarter inch = one foot
 one eighth inch = one foot



- SHEET NOTES:**
- 1 THE THIRD GENERATOR 103A-GEN-03 AND ASSOCIATED FUEL PUMPS, PIPING AND ACCESSORIES SHALL BE FUTURE.
 - 2 THE FUEL CONTROL SYSTEM SHALL INCLUDE ALL THE CONNECTIONS POINTS AND CONTROLS TO ADD THE THIRD GENERATOR.
 - 3 DUPLEX, REDUNDANT, PRIMARY IN-LINE FUEL FILTRATION SYSTEM WITH REMOTE MONITORING CAPABILITY. THE PRIMARY IN LINE FUEL FILTER SHALL INCLUDE TWO (DUPLEX) SWITCHABLE HIGH CAPACITY FUEL FILTER / WATER SEPARATORS, CAPABLE OF A NOT LESS THAN THREE TIMES THE MAXIMUM FLOWRATE OF THE APPLICABLE GENERATOR. SWITCHING SHALL BE BY A SINGLE LEVER, FROM A CLOGGED FILTER TO A NEW FILTER UNDER FULL OPERATING LOAD WITHOUT INTERRUPTING THE GENERATOR FUEL SUPPLY. MONITORING SYSTEM SHALL LOCALLY ALARM UNDER HIGH WATER AND HIGH VACUUM CONDITIONS.

1 **EMERGENCY/STANDBY POWER MECHANICAL FUEL OIL SYSTEM DIAGRAM**
 SCALE: N.T.S.+

CONSTRUCTION DOCUMENTS

Revisions:	Date
FINAL BID DOCUMENTS (15-411)	6/22/17
100% CONSTRUCTION DOCUMENTS (15-410)	6/15/17
100% DESIGN DEVELOPMENT (15-407)	5/12/17
50% DESIGN DEVELOPMENT (15-401)	4/13/17
100% SCHEMATIC DESIGN (15-391)	3/10/17
65% DESIGN DEVELOPMENT (15-354)	11/30/16
15% DESIGN REPORT (15-269)	5/5/16

CONSULTANTS:

KEY PLAN

STAMP

ARCHITECT/ENGINEERS:

ADVANCE DESIGN CONSULTANTS, INC.

988 PARK AVENUE SAN JOSE CALIFORNIA 95128
 P: (408) 297-1881 F: (408)1294-3186 www.adcengineers.com
 PR: 15-308-55

ATTENTION:

ONLY WET SIGNED DOCUMENTS CONSTITUTE ADVANCE DESIGN CONSULTANTS, INC. PROFESSIONAL WORK AND BECAUSE OTHER REPRODUCIBLE DOCUMENTS MAY BE EASILY ALTERED WITHOUT THE CONSENT OF ADVANCE DESIGN CONSULTANTS, INC. THE WET SIGNED DOCUMENTS MUST BE REFERRED TO FOR THE ORIGINAL AND CORRECT INFORMATION. IF THERE ARE ANY DIFFERENCES BETWEEN THE WET SIGNED DOCUMENTS AND ANY OTHER DOCUMENTS, THE WET SIGNED DOCUMENTS SHALL GOVERN.

ADVANCE DESIGN CONSULTANTS, INC. IS NOT RESPONSIBLE FOR ANY MODIFICATIONS MADE TO OUR DOCUMENTS BY ANYONE OTHER THAN AUTHORIZED REPRESENTATIVES OF ADVANCE DESIGN CONSULTANTS, INC.

Drawing Title: **EMERGENCY/STAN-BY POWER MECHANICAL FUEL OIL SYSTEM DIAGRAM**

Approved: Project Director

Project Title: **PAD B100/101 EMERGENCY POWER UPGRADE**

Location: **3801 MIRANDA AVE, PALO ALTO, CA**

Date: **6/22/2017**

Project Number: **640-15-158**

Building Number: **B103A**

Drawing Number: **M-601**

Office of Facilities Management

Department of Veterans Affairs

(N) EXHAUST SILENCER DIESEL PARTICLE FILTER SCHEDULE

EQUIPMENT TAG	MANUFACTURER AND MODEL NUMBER	LOCATION	INLET	OUTLET	SOUND ATTENUATION dBA								DIMENSIONS	OPERATING WEIGHT (LBS.)	REMARKS
					63 hZ	125 hZ	250 hZ	500 hZ	1k hZ	2k hZ	4k hZ	8k hZ			
103A-DPF-01	MIRATECH LTRV56-50-16-XR1	GENERATOR BUILDING	16"	16"	20	27	34	30	30	35	37	40	100"L X 57 1/2"W X 5 1/8"H	2,492	1,2,3
103B-DPF-02	MIRATECH LTRV56-50-16-XR1	GENERATOR BUILDING	16"	16"	20	27	34	30	30	35	37	40	100"L X 57 1/2"W X 5 1/8"H	2,492	1,2,3
103B-DPF-03	MIRATECH LTRV56-50-16-XR1	GENERATOR BUILDING	16"	16"	20	27	34	30	30	35	37	40	100"L X 57 1/2"W X 5 1/8"H	2,492	1,2,3,4

REMARKS
 1. WITH HANGER BRACKETS.
 2. WITH ZINC BASED HIGH HEAT AND HIGH CORROSION RESISTANT PAINT.
 3. WITH DPF DATA LOGGER ASSEMBLY KIT.
 4. FUTURE FOR THIRD GENERATOR.

(N) BAFFLE SILENCER SCHEDULE

EQUIPMENT TAG	MANUFACTURER AND MODEL NUMBER	LOCATION	TYPE	QTY	FLOWRATE CFM	VELOCITY FPM	PRESSURE DROP IN. WG	SOUND ATTENUATION dBA								DIMENSIONS	OPERATING WEIGHT (LBS.)	REMARKS
								63 hZ	125 hZ	250 hZ	500 hZ	1k hZ	2k hZ	4k hZ	8k hZ			
103A-BAF-01	VIBRO-ACOUSTICS RD-LV-F2	GENERATOR BUILDING	INTAKE	3	79,072	470	0.07	-2	-3	-5	-9	-7	-5	-4	-5	144"W x 168"H 36"L	-	-
103A-BAF-02	VIBRO-ACOUSTICS RD-LV-F2	GENERATOR BUILDING	DISCHARGE	3	73,280	611	0.11	-5	-10	-16	-17	-20	-18	-16	-13	144"W x 120"H 36"L	-	-

REMARKS
 1. BAFFLES TO REDUCE SOUND LEVELS TO MAX. 85 dBA AT 5 FEET FROM ANY SIDE, TOP OR BOTTOM TO NO MORE THAN 75 dBA AT 50 FEET HORIZONTALLY FROM THE BUILDING.

(N) DUCT SILENCER SCHEDULE

EQUIPMENT TAG	MANUFACTURER AND MODEL NUMBER	LOCATION	INLET	OUTLET	CFM	PRESSURE DROP IN. WG	SOUND ATTENUATION dBA								DIMENSIONS	OPERATING WEIGHT (LBS.)	REMARKS
							63 hZ	125 hZ	250 hZ	500 hZ	1k hZ	2k hZ	4k hZ	8k hZ			
103A-DS-01	VIBRO-ACOUSTICS 24 X CD-LV-F1 X 48	GENERATOR BUILDING	24"	24"	2,600	0.06	7	12	23	32	43	45	46	20	24" x 48"L	363	1

REMARKS
 1. WITH HANGER BRACKETS.

EXHAUST FAN SCHEDULE

EQUIPMENT TAG	MANUFACTURER AND MODEL NUMBER	LOCATION	TYPE	CFM	S.P. IN W.G.	FAN RPM	BHP	HP	ELECTRICAL			WEIGHT LBS.	REMARKS
									V	PH	HZ		
103A-EF-01	GREENHECK G-143-VG/10/A	GENERATOR BUILDING ROOF	CENTRIFUGAL	2,600	0.20	1,473	0.63	1	115	1	60	77	WITH BACKDRAFT DAMPER, ECM MOTOR, ROOF CURB AND LINE VOLTAGE THERMOSTAT
103A-EF-02	GREENHECK G-123-VG/5/A	GENERATOR BUILDING ELECTRICAL ROOM 06	CENTRIFUGAL	1,680	0.20	1,475	0.27	1/2	115	1	60	58	WITH BACKDRAFT DAMPER, ECM MOTOR, ROOF CURB AND LINE VOLTAGE THERMOSTAT
103A-EF-03	GREENHECK G-103-VG/5/A	GENERATOR BUILDING ROOM 05	CENTRIFUGAL	1,010	0.20	1,350	0.16	1/2	115	1	60	54	WITH BACKDRAFT DAMPER, ROOF CURB AND LINE VOLTAGE THERMOSTAT

DIESEL FUEL STORAGE TANK SCHEDULE

EQUIPMENT TAG	MANUFACTURER AND MODEL NUMBER	LOCATION	TYPE	CAPACITY	WEIGHT LBS.	DIMENSIONS	REMARKS
103A-T-01	MODERN WELDING	NEXT TO GENERATOR BUILDING	FIREGUARD UL 2085	21,500 GAL.	-	10'9" x 37'L	-

GENERATOR DAY TANK SCHEDULE

EQUIPMENT TAG	MANUFACTURER AND MODEL NUMBER	LOCATION	TYPE	CAPACITY	WEIGHT LBS.	DIMENSIONS	REMARKS
103A-DT-01	-	GENERATOR BUILDING	-	660 GAL.	-	25'K x 8'W x 12'H	DOUBLE WALL TANK
103A-DT-02	-	GENERATOR BUILDING	-	660 GAL.	-	25'K x 8'W x 12'H	DOUBLE WALL TANK
103A-DT-03	-	GENERATOR BUILDING	-	660 GAL.	-	25'K x 8'W x 12'H	DOUBLE WALL TANK, FUTURE FOR THIRD GENERATOR

(N) DIESEL FILTRATION SYSTEM SCHEDULE

EQUIPMENT TAG	MANUFACTURER AND MODEL NUMBER	LOCATION	FLOWRATE	ELECTRICAL			INLET	OUTLET	DIMENSIONS	OPERATING WEIGHT (LBS.)	REMARKS
				V/#/hz	AMPS	HP					
103A-DFS-01	SIMPLEX SMART FILTER SF-15	GENERATOR MAIN FUEL TANK	15 GPM	115/1/60	13.4	1.0	2" 150 LB. FLANGE	2" 150 LB. FLANGE	58"W x 72"H x 40"D	-	1,2

REMARKS
 1. INJECTION TANK AND PUMP FOR AUTOMATIC INJECTION OF FUEL ADDITIVES.
 2. FOR ADDITIONAL INFORMATION SEE SPECIFICATION 23 10 00 SECTION FUEL OIL QUALITY MAINTENANCE SYSTEMS

(N) DIESEL FUEL FILL STATION SCHEDULE

EQUIPMENT TAG	MANUFACTURER AND MODEL NUMBER	LOCATION	SPILL CONTAINMENT	ELECTRICAL			INLET	OUTLET	DIMENSIONS	OPERATING WEIGHT (LBS.)	REMARKS
				V/#/hz	AMPS	HP					
103A-FFS-01	SIMPLEX AUTOMATIC FUEL PORT	GENERATOR MAIN FUEL TANK	20 GALLONS	115/1/60	4"	4"	49 1/2"W x 48"H x 24"D	343	1,2		

REMARKS
 1. ELECTRICALLY OPERATED SHUTOFF VALVE.
 2. FOR ADDITIONAL INFORMATION SEE SPECIFICATION 23 10 00 SECTION TANK AND PIPING ACCESSORIES FILL BOXES.

(N) LOUVER SCHEDULE

EQUIPMENT TAG	MANUFACTURER AND MODEL NUMBER	LOCATION	TYPE	QUANTITY	FLOWRATE CFM	VELOCITY FPM	PRESSURE DROP IN. WG	FREE AREA	DIMENSIONS	OPERATING WEIGHT (LBS.)	REMARKS
103A-LVR-01	RUSKIN ELF6350DMP	GENERATOR BUILDING	INTAKE	12	19,768	713	0.07	62%	72"W x 84"H x 6"D	252	1
103A-LVR-02	RUSKIN ELF6350DMP	GENERATOR BUILDING	DISCHARGE	6	36,640	907	0.11	62%	72"W x 120"H x 6"D	360	1

REMARKS
 1. 1"x1" GALVANIZED BIRD-SCREEN.

(N) DIESEL FUEL PUMP SCHEDULE

EQUIPMENT TAG	LOCATION	FLOWRATE GPM	HEAD FT WC	ELECTRICAL		LENGTH	OPERATING WEIGHT (LBS.)	REMARKS
				V/#/hz	HP			
103A-FP-01	DIESEL FUEL STORAGE TANK	35	15	208/1/60	1/2	RANGE 118"-209"	-	1,2
103A-FP-02	DIESEL FUEL STORAGE TANK	35	15	208/1/60	1/2	RANGE 118"-209"	-	1,2
103A-FP-03	DIESEL FUEL STORAGE TANK	35	15	208/1/60	1/2	RANGE 118"-209"	-	1,2
103A-FP-04	DIESEL FUEL STORAGE TANK	35	15	208/1/60	1/2	RANGE 118"-209"	-	1,2
103A-FP-05	DIESEL FUEL STORAGE TANK	35	15	208/1/60	1/2	RANGE 118"-209"	-	1,2,3
103A-FP-06	DIESEL FUEL STORAGE TANK	35	15	208/1/60	1/2	RANGE 118"-209"	-	1,2,3
103A-FP-07	GENERATOR DAY TANK	35	15	208/1/60	1/2	-	-	-
103A-FP-08	GENERATOR DAY TANK	35	15	208/1/60	1/2	-	-	-
103A-FP-09	GENERATOR DAY TANK	35	15	208/1/60	1/2	-	-	3
103A-MP-01	DIESEL FUEL STORAGE TANK	35	15	115/1/60	1/2	RANGE 118"-209"	-	1,2,4
103A-MP-02	DIESEL FUEL STORAGE TANK	35	15	115/1/60	1/2	RANGE 118"-209"	-	1,2,4
103A-MP-03	DIESEL FUEL STORAGE TANK	35	15	115/1/60	1/2	RANGE 118"-209"	-	3

REMARKS
 1. INLET FILTER SCREEN
 2. 16 PSI RELIEF VALVE
 3. FUTURE THIRD ENGINE GENERATOR
 4. MANUAL ELECTRIC PUMP TO BE CONNECTED TO PORTABLE GENERATOR AS NEEDED.

CONSTRUCTION DOCUMENTS

Revisions:	Date
FINAL BID DOCUMENTS (15-411)	6/22/17
100% CONSTRUCTION DOCUMENTS (15-410)	6/15/17
100% DESIGN DEVELOPMENT (15-407)	5/12/17
50% DESIGN DEVELOPMENT (15-401)	4/13/17
100% SCHEMATIC DESIGN (15-391)	3/10/17
65% DESIGN DEVELOPMENT (15-354)	11/30/16
15% DESIGN REPORT (15-269)	5/5/16

CONSULTANTS:

KEY PLAN

STAMP

ARCHITECT/ENGINEERS:



ATTENTION:
 ONLY WET SIGNED DOCUMENTS CONSTITUTE ADVANCE DESIGN CONSULTANTS, INC. PROFESSIONAL WORK AND BECAUSE OTHER REPRODUCIBLE DOCUMENTS MAY BE EASILY ALTERED WITHOUT THE CONSENT OF ADVANCE DESIGN CONSULTANTS, INC. THE WET SIGNED DOCUMENTS MUST BE FILED WITH THE ORIGINAL AND CURRENT INFORMATION. IF THERE ARE ANY DIFFERENCES BETWEEN THE WET SIGNED DOCUMENTS AND ANY OTHER DOCUMENTS, THE WET SIGNED DOCUMENTS SHALL GOVERN.
 ADVANCE DESIGN CONSULTANTS, INC. IS NOT RESPONSIBLE FOR ANY MODIFICATIONS MADE TO OUR DOCUMENTS BY ANYONE OTHER THAN AUTHORIZED REPRESENTATIVES OF ADVANCE DESIGN CONSULTANTS, INC.
 PR# 15-308-55

Drawing Title
EMERGENCY/STAND-BY POWER MECHANICAL SCHEDULES

Approved: Project Director

Project Title
PAD B100/101 EMERGENCY POWER UPGRADE

Location
3801 MIRANDA AVE, PALO ALTO, CA

Date
6/22/2017

Checked
 -

Drawn
 -

Project Number
640-15-158

Building Number
B103A

Drawing Number
M-701

Office of Facilities Management

