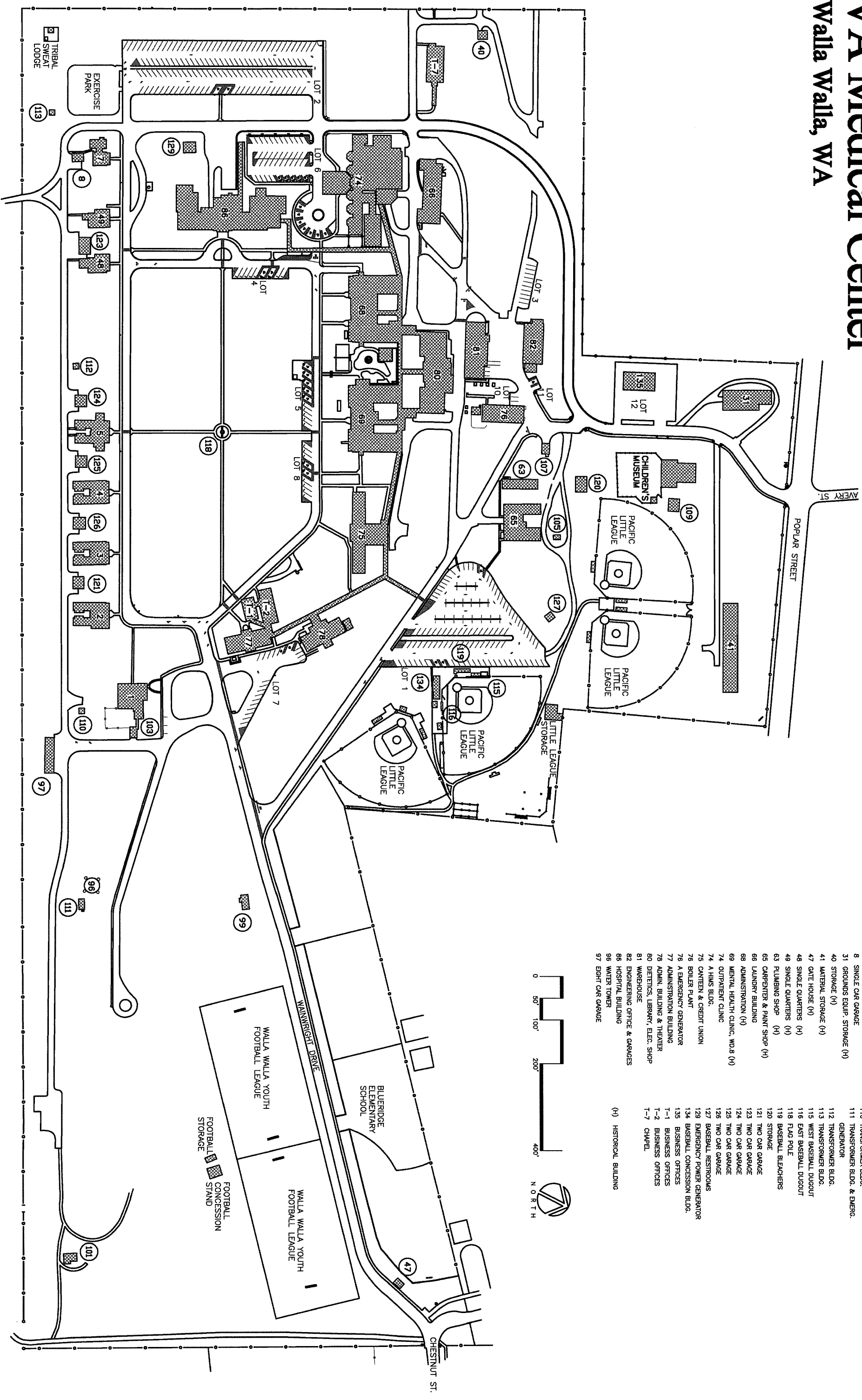
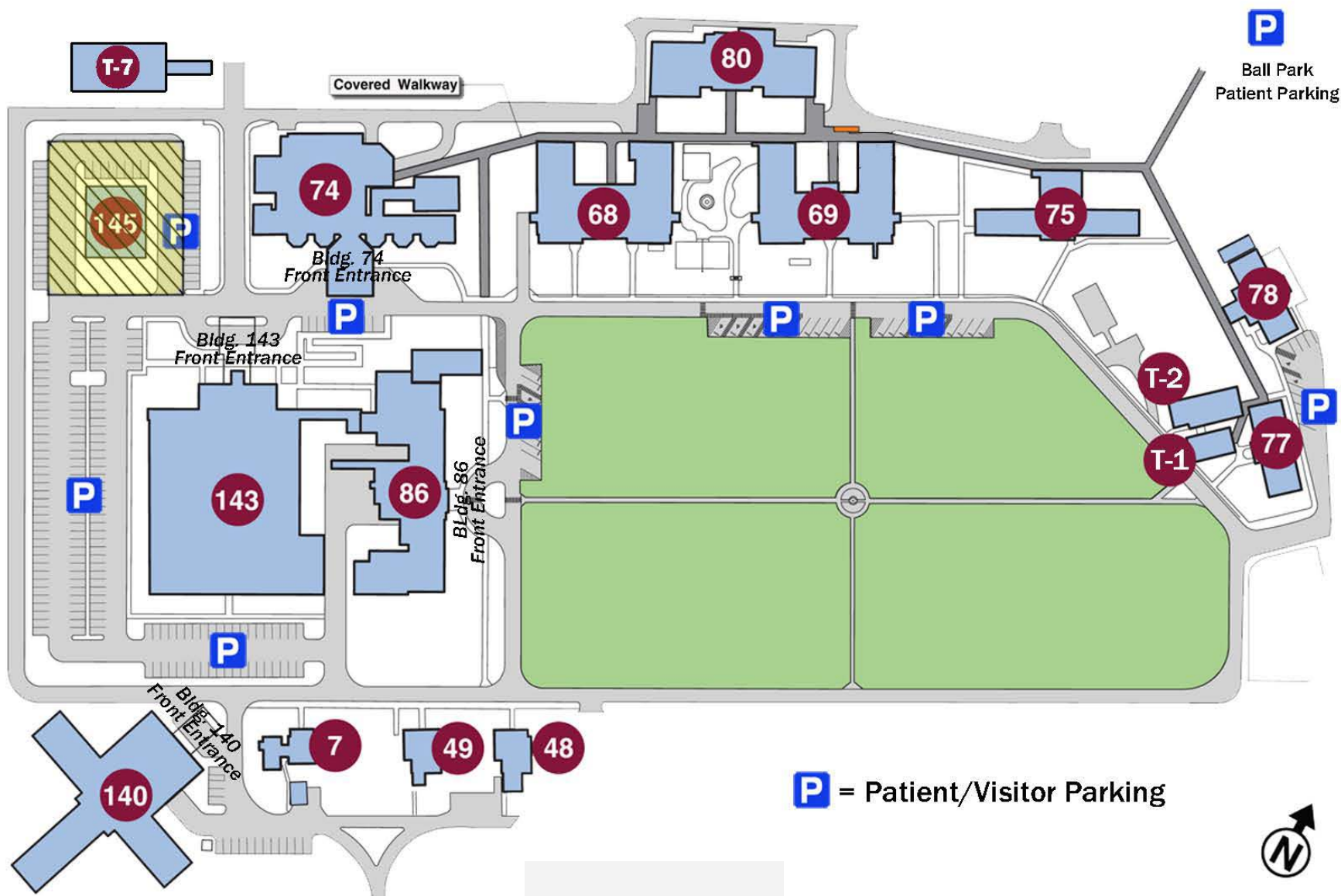
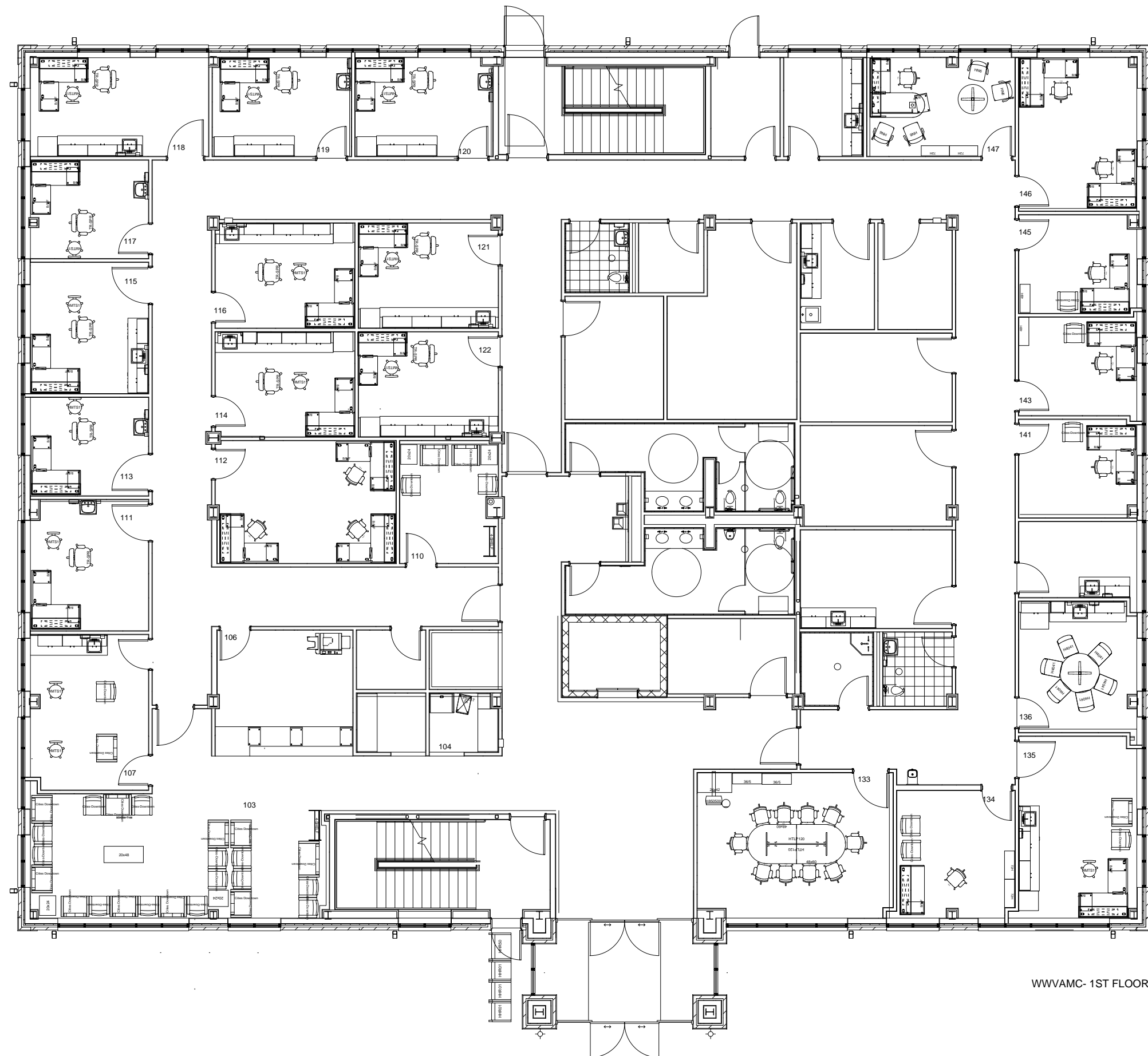


Jonathan M. Wainwright Memorial
VA Medical Center
Walla Walla, WA

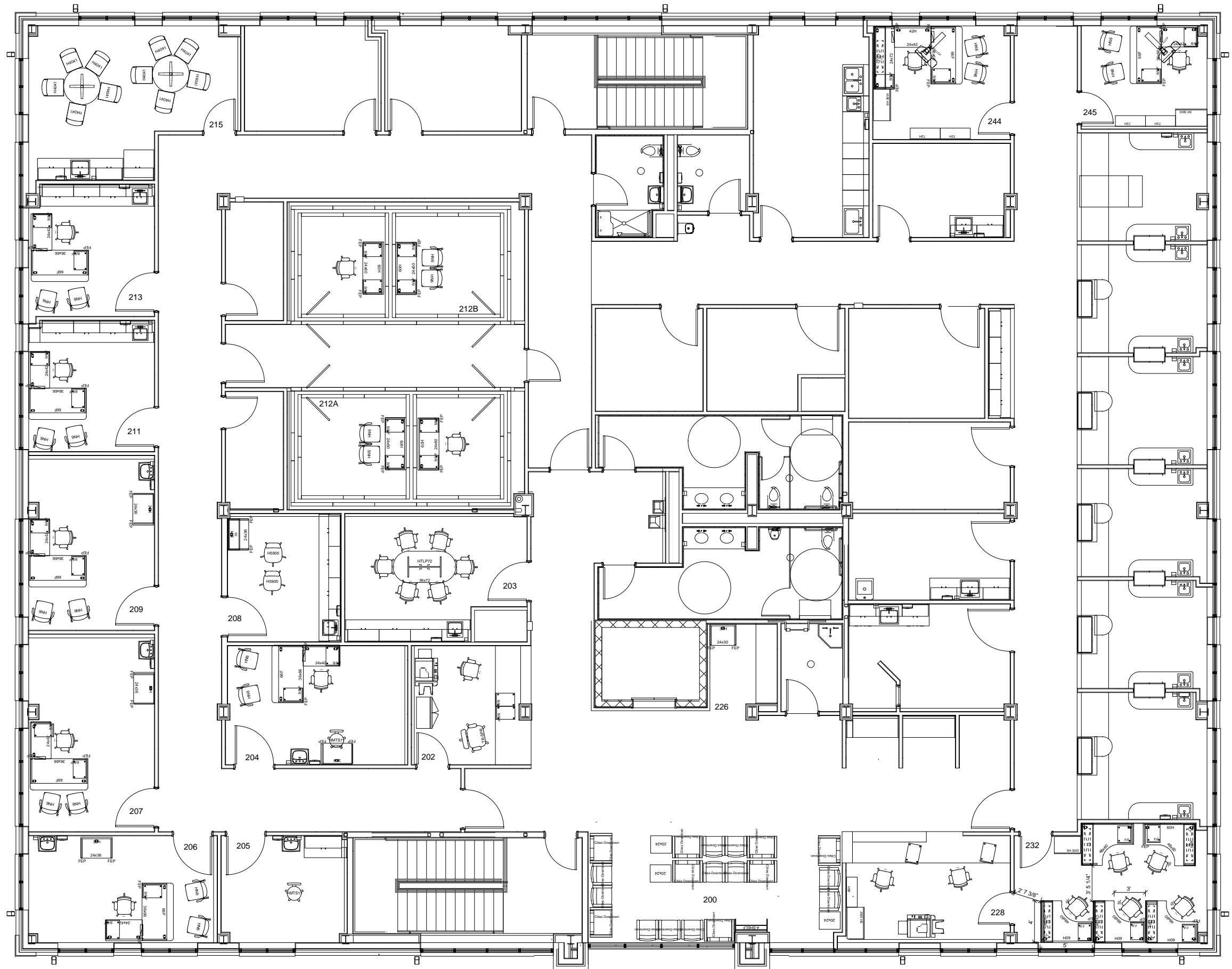


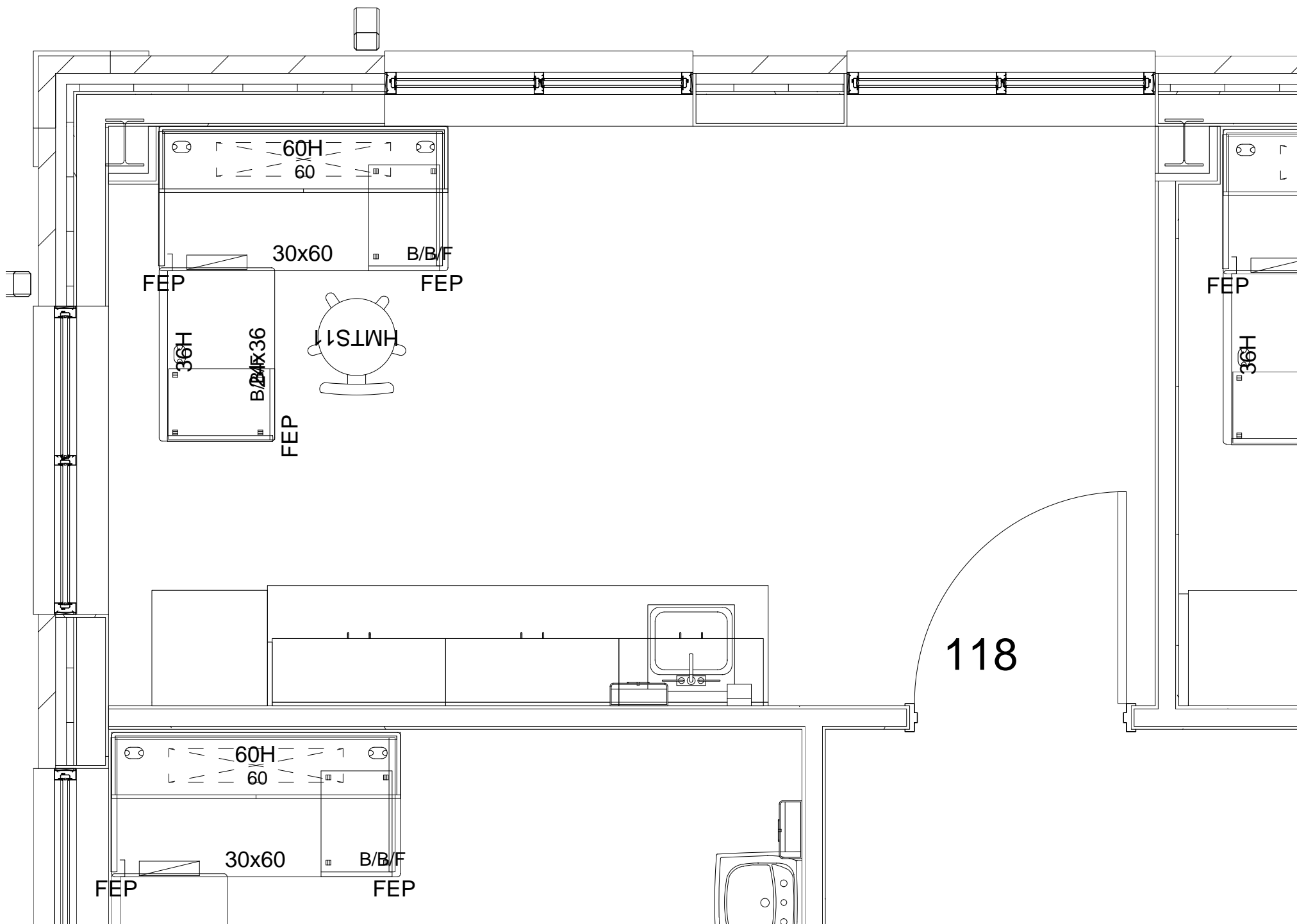
Jonathan M. Wainwright Memorial VA Medical Center

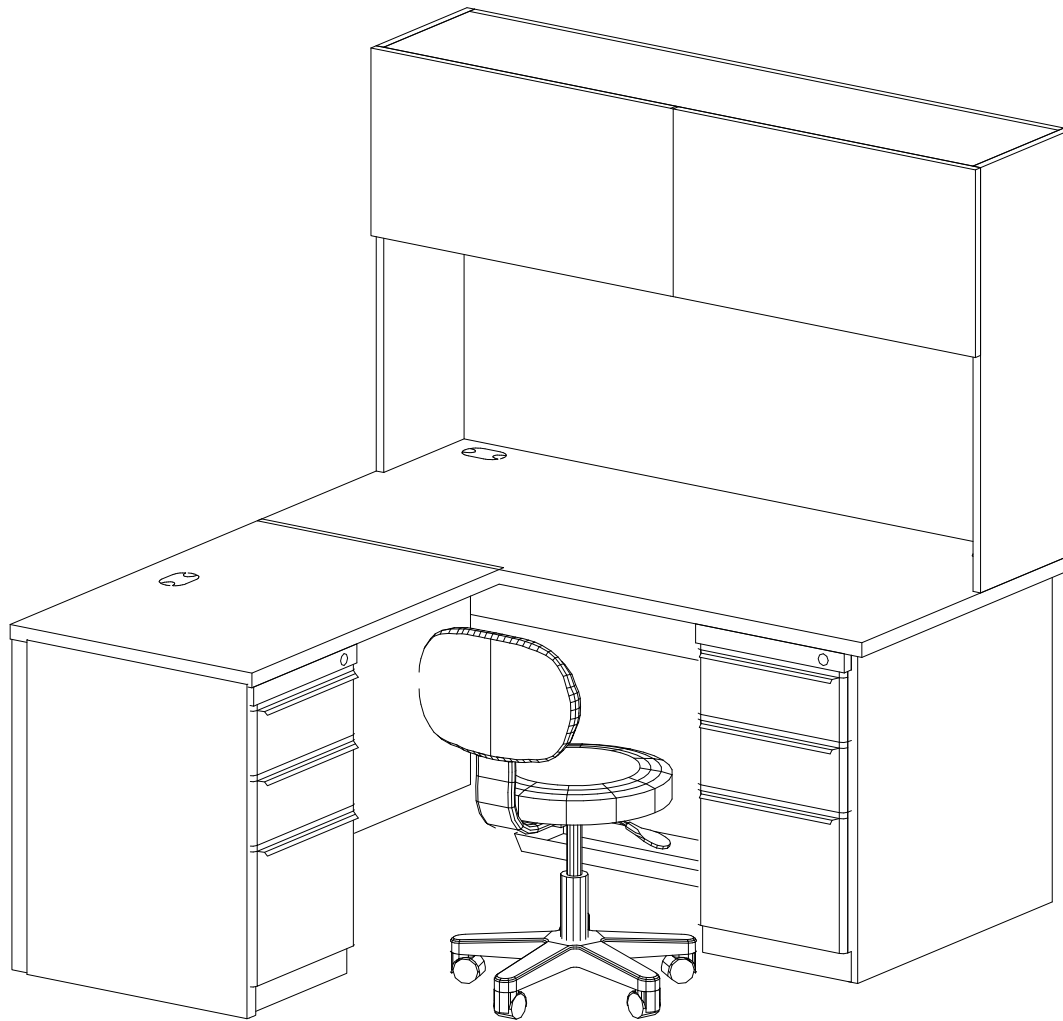




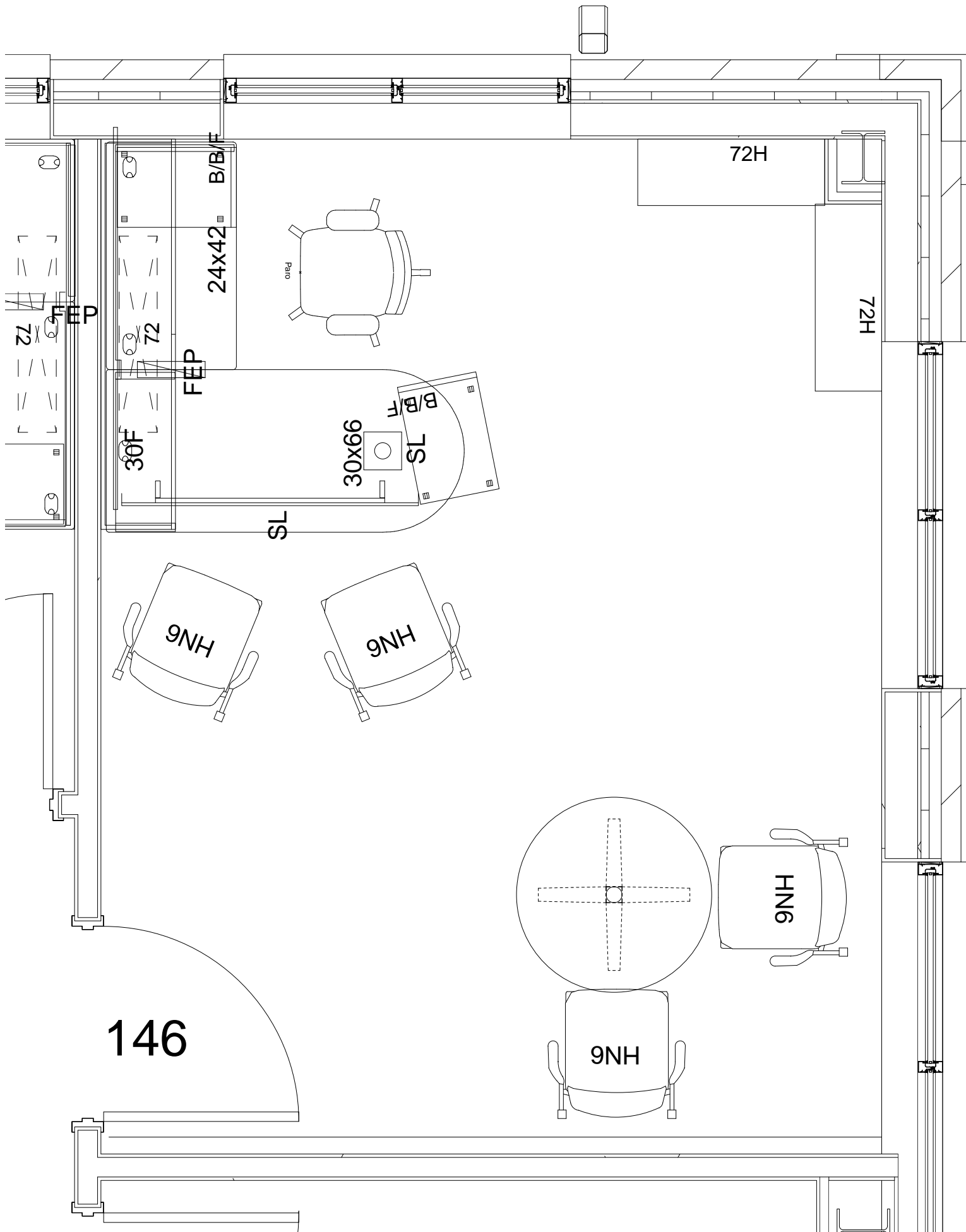
WWVAMC- 1ST FLOOR

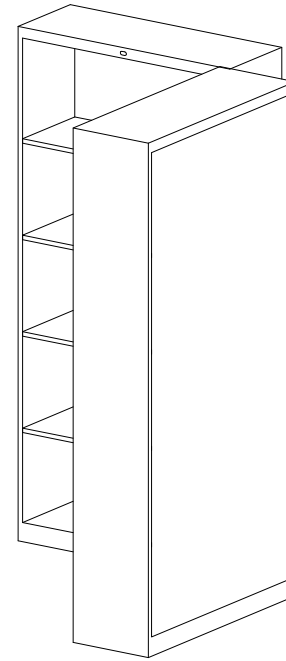
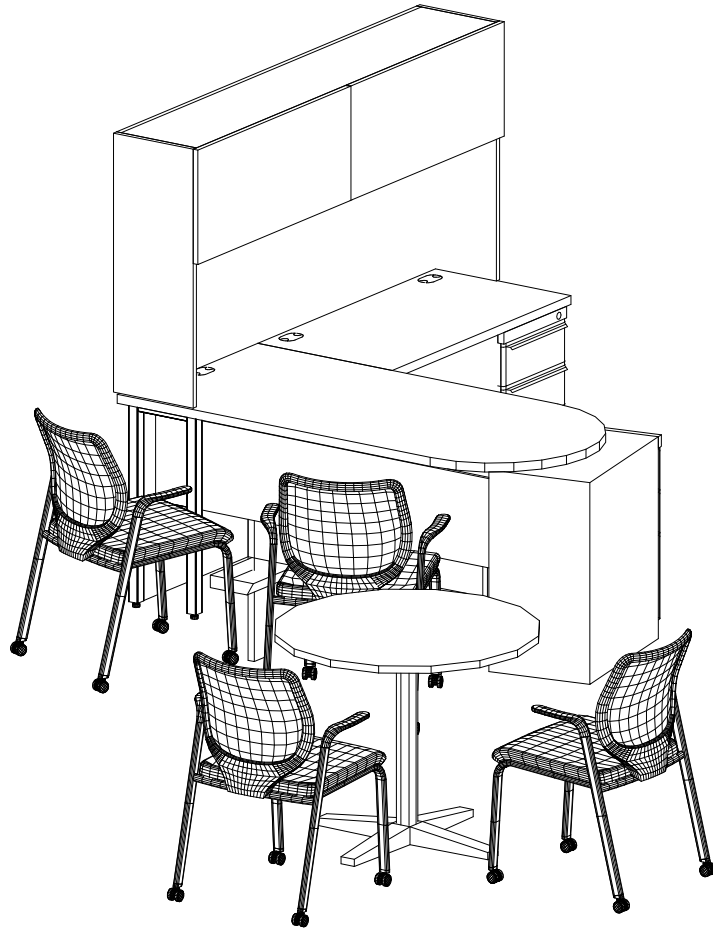




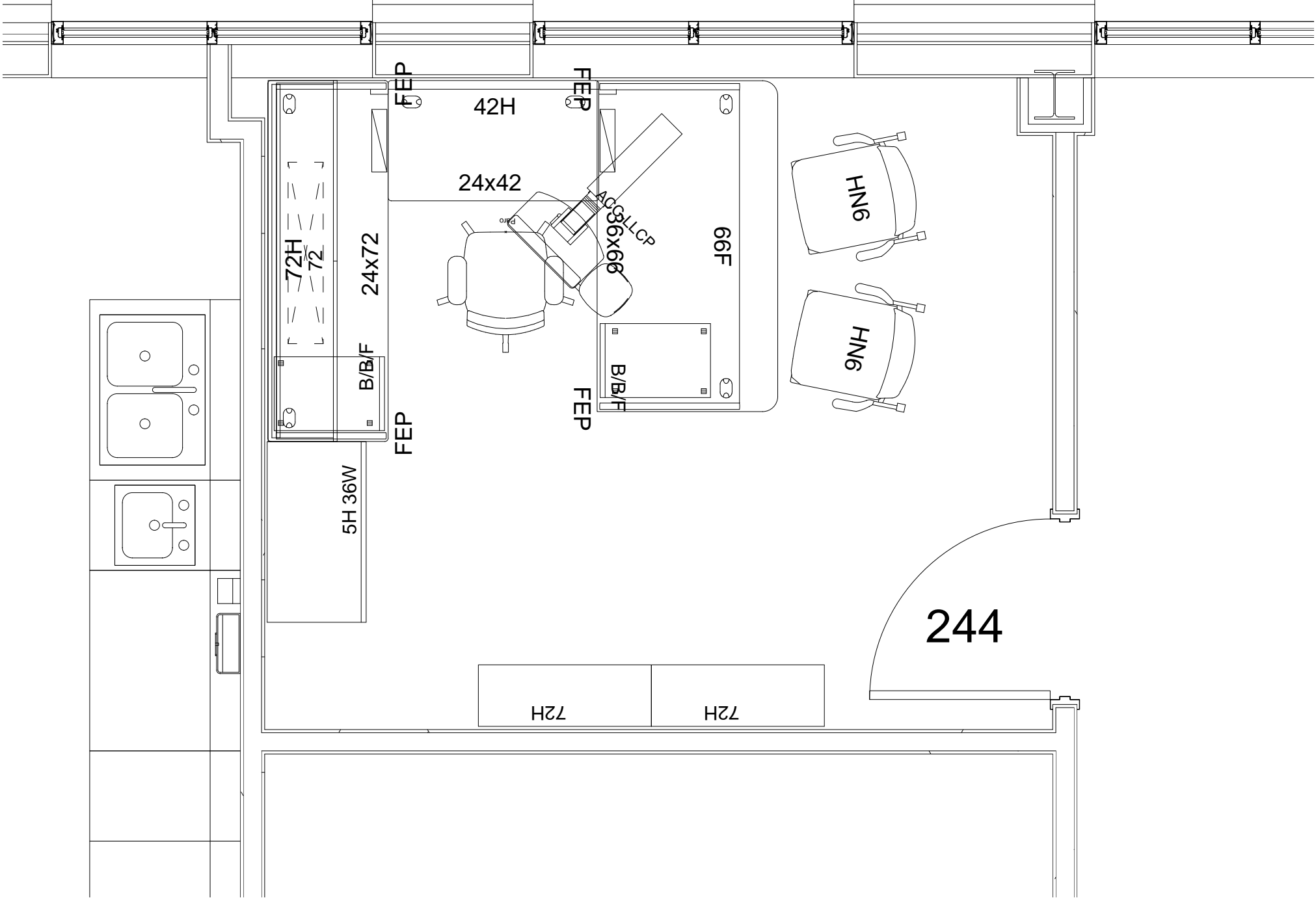


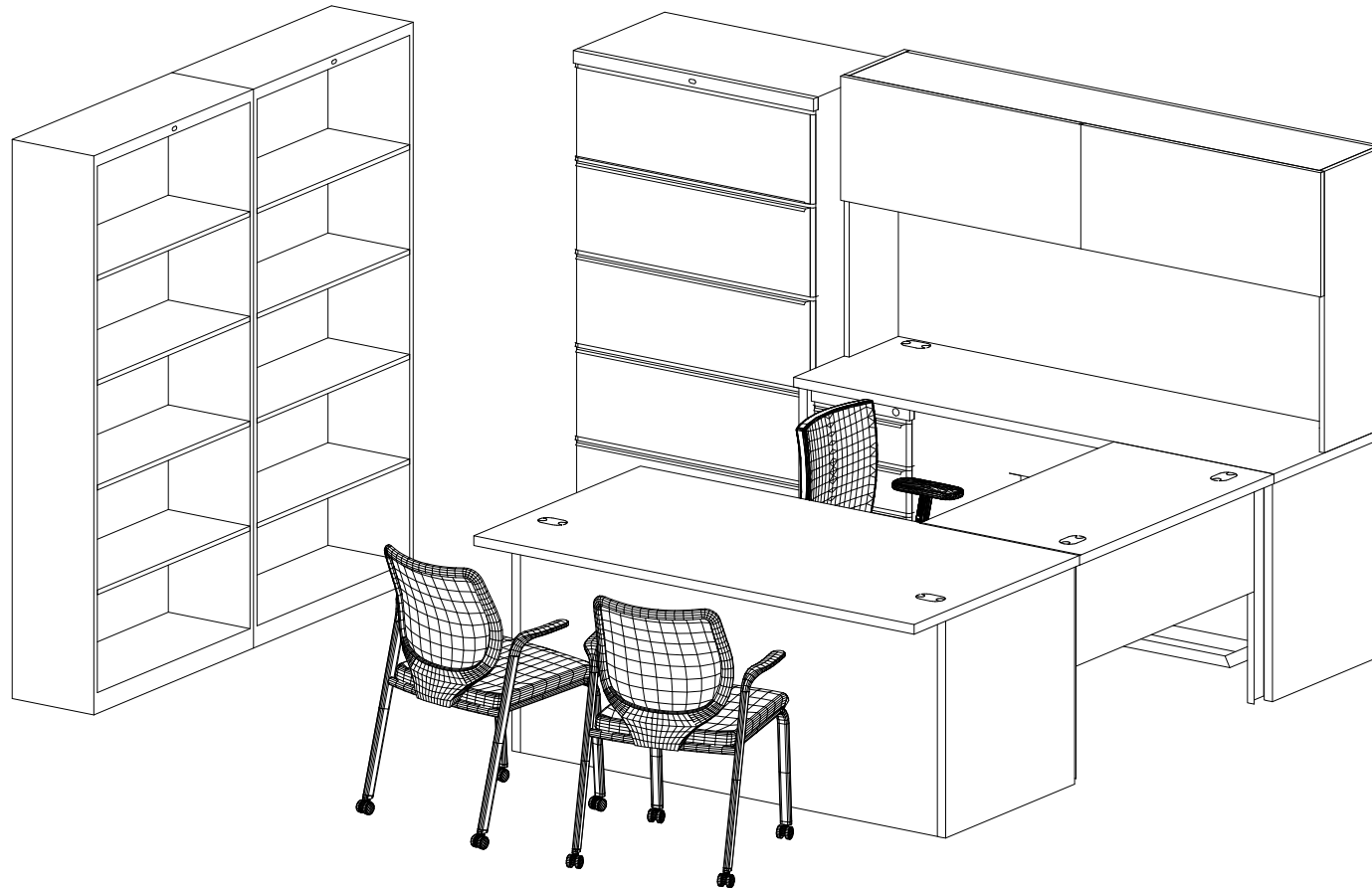
RM118 Typical





RM146 Typical





RM244 Typical

WWVAMC Bldg 145 Furniture List

Mfg	Cat	Part Number	Part Description	Category	Qty
			Bodybilt Chairs		
EGS	BBT	J2607 : B1 : C1 : Y	Paro Mid Back Synchro-Tilter (Fabric Back) with integrated s	SEATING	54
EGS	BBT	J2504 : B2 : C1 : Y	Trooper LT/Adj Arms	SEATING	5
			Multi Surface Caster		
			BASE: Black		
EGS			BodyBilt Subtotal		
			HON FURNITURE		
HON	HCG	H105535	Bookcase 5-shelf 36Wx13-1/8Dx71H	STORAGE	2
HON	HCG	H105691X	Credenza Shell 42W x 24D x 29-1/2H	FREESTANDI NG TABLE	1
HON	HTL	H1157	Rect Hosp Top w/ T-Mld Edg 36D x 96W	FREESTANDI NG TABLE	1
	.HH		VEN: Bourbon Cherry		
HON	HCG	H850500	SAMBA Articulating/Swiveling Keyboard Platform	ACCESSORY	1
	.P		Color: Black		
HON	HEN	HMR44	4-Shelf Steel Free Standing Floor Literature Rack	STORAGE	3
	.L		PAINT: Putty		
HON	HSN	HMTS11	Medical Exam Task Stool w/Back Swivel Pneu Ht Adj	SEATING	15
	.EA		UPH: Vinyl		
	11		COLOR: Black		
HON	HSN	HN6	NucleusGuest Multi-purpose Chair Four Leg Stacking Frame	SEATING	24
	.F		Arm: Fixed Arm		
	.A		Option: All Surface Caster		
	.IF		Back: ILira Stretch Fog		
	\$(5)		GRADE: V UPHOLSTERY		
	.SX		UPH: Silvertex Vinyl		
HON	HTL	HT-26B	2" Dia. Single Column T-Base (2 per carton)	FREESTANDI NG TABLE	1
	.P		PAINT: Black		
HON	HTL	HTLA48120	120"W x 48"D Racetrack Shaped Laminate Top	FREESTANDI NG TABLE	1
	.G1		Cut out for Pop Up Port		
	...		Skipped Option		
HON	HTL	HTLP120	Laminate Panel Base For 120" W Table Tops	FREESTANDI NG TABLE	1
HON	HTL	HTPWRGROM1	Pop Up Port-MHO	FREESTANDI NG TABLE	2

HON	HSN	HWGN1	Guest Four-leg base Double Rail Arms	SEATING	4
		\$(5)	GRADE: V UPHOLSTERY		
		.SX	UPH: Silververtex Vinyl		
HON	HSN	HWGN5	Bariatric Single Seat Four Leg Double Rail Arms	SEATING	1
		\$(5)	GRADE: V UPHOLSTERY		
		.SX	UPH: Silververtex Vinyl		
HON	HSN	H4041	4041 Polymer Seat & Back 4 Chairs Per Carton	SEATING	1
		.Y	FRAME: Chrome		
HON	HSN	H5905	Swivel Stool Adjustable Ring Pneumatic	SEATING	2
		.H	CASTER: Hard (Standard)		
		\$(5)	GRADE: V UPHOLSTERY		
		.T	FRAME: Black		
HON	HTL	HTLA3672	72"W x 36"D Racetrack Shaped Laminate Top	FREESTANDING TABLE	1
		.G1	Cut out for Pop up Port		
HON	HTL	HTLP72	Laminate Panel Base For 72" W Table Tops	FREESTANDING TABLE	1
			MAXON FURNITURE		
MAX	MSR	M-BS48	Bookcase - 48H 4-Shelf		3
MAX	MSR	M-BS72	Bookcase - 72H 5-Shelf		8
			Pre-Formed Low Profile Center Drawer Black		
MAX	MPW	M-CD1			2
MAX	MTB	M-CTB1	Conference Table Pedestal Base		3
MAX	MTB	M-CTR36T	Conference Table Top Round 36 Dia T-mold		1
		\$(GCDRLAM)	Core Dir Lam Opts		
MAX	MPW	M-EMSTL42	Empwr Task Light 42W or greater		31
MAX	MSR	M-ESM24BF-R	Short Mobile Pedestal - 23"D, BF, R-pull		6
MAX	MSR	M-ESM24SEAT	Pedestal Seat Cushion 23"D x 15"W		1
		\$(3COM)	Grd 3 COM Uph		
MAX	MSR	M-ESP24BM-R	Ridgeline Pedestal 24D BBF Mobile R-Pull		67
			Deskng Rect.Desk Support Kit 24Dx30W Half Mod.		
MAX	MSU	M-MDDS2430HP			2
MAX	MSU	M-MDDS24NP	Deskng Rect.Desk Support Kit 24D No Mod.		2
			Deskng Rect.Desk Support Kit 30Dx60W Half Mod.		
MAX	MSU	M-MDDS3060HP			20
			Deskng Full Hutch 60W Opn Lwr.Bk StlPtd Dr		
MAX	MSU	M-MDHO60E			19
			Deskng Full Hutch 72W Opn Lwr.Bk StlPtd Dr		
MAX	MSU	M-MDHO72E			7
			Maxon Deskng Hutch Back and Tackboard 60W		
MAX	MSU	M-MDHT60			19
		\$(3)	Grd 3 Fab		

MAX	MSU	M-MDHT72	Maxon Desking Hutch Back and Tackboard 72W		7
		\$(3)	Grd 3 Fab		
		.RR	RR Cut		
MAX	MSU	M-MDPM66	Maxon Desking Peninsula Modesty Panel 66W		1
MAX	MSU	M-MDPS30FP	Desking Peninsula Support Kit 30D Full Mod.		1
MAX	MSU	M-MDPT3066	Desking Penin Work Surfade-Rad Shape 30Dx66W TM		1
		\$(GCDRLAM)	Core Dir Lam Opts		
MAX	MSU	M-MDRD2436HP	Return/Rect Desk Support Kit 24Dx36W Half Mod.		6
MAX	MSU	M-MDRD2442HP	Return/Rect Desk Support Kit 24Dx42W Half Mod.		20
MAX	MSU	M-MDWRT2430	Desking 24D x 30W Rectangular Work Surface		2
		\$(GCDRLAM)	Core Dir Lam Opts		
MAX	MSU	M-MDWRT2436	Desking 24D x 36W Rectangular Work Surface		13
		\$(GCDRLAM)	Core Dir Lam Opts		
MAX	MSU	M-MDWRT2442	Desking 24D x 42W Rectangular Work Surface		22
		\$(GCDRLAM)	Core Dir Lam Opts		
MAX	MSU	M-MDWRT3060	Desking 30D x 60W Rectangular Work Surface		20
		\$(GCDRLAM)	Core Dir Lam Opts		
MAX	MPW	M-ACC-LLCP	Lift and Lock Articulating Arm & Platform		2
MAX	MTB	M-CTR42T	Conference Table Top Round 42 Dia T-mold		2
		\$(GCDRLAM)	Core Dir Lam Opts		
MAX	MSR	M-ESP20FM-R	Ridgeline Pedestal 20D FF Mobile R-Pull		5
MAX	MSR	M-LF530-R	Ridgeline Lateral- 5-Dwr 30W R-Pull		1
MAX	MSR	M-LF536-R	Ridgeline Lateral- 5-Dwr 36W R-Pull		3
MAX	MSU	M-MDBDD42HP	Bridge Support Kit Desk to Desk 42W Half Mod.		2
MAX	MSU	M-MDDS2436HP	Deskng Rect.Desk Support Kit 24Dx36W Half Mod.		5
MAX	MSU	M-MDDS2460HP	Deskng Rect.Desk Support Kit 24Dx60W Half Mod.		4
MAX	MSU	M-MDDS2472HP	Deskig Rect.Desk Support Kit 24Dx72W Half Mod.		2
MAX	MSU	M-MDDS3066FP	Deskng Rect.Desk Support Kit 30Dx66W Full Mod.		8

MAX	MSU	M-MDEFT3666	Desking Executive Front Work Surface 36Dx72W TM		8
		\$(GCDRLAM)	Core Dir Lam Opts		
MAX	MSU	M-MDHO36E	Desking Full Hutch 36W Opn Lwr.Bk StlPtd Dr		1
MAX	MSU	M-MDHO48E	Desking Full Hutch 48W Opn Lwr.Bk StlPtd Dr		5
MAX	MSU	M-MDHT36	Maxon Desking Hutch Back and Tackboard 36W		1
		\$(3)	Grd 3 Fab		
MAX	MSU	M-MDHT48	Maxon Desking Hutch Back and Tackboard 48W		6
		\$(3)	Grd 3 Fab		
MAX	MSU	M-MDLRR4860H	L-return for Retn Supprt Kit 48Wx60L Half Mod.		5
MAX	MSU	M-MDLRT4860L	Maxon Desking L-Rtn Rad Frt 48Dx60W TM LH		4
		\$(GCDRLAM)	Core Dir Lam Opts		
MAX	MSU	M-MDLRT4860R	Maxon Desking L-Rtn Rad Frt 48Dx60W TM RH		1
		\$(GCDRLAM)	Core Dir Lam Opts		
MAX	MSU	M-MDWRT2460	Desking 24D x 60W Rectangular Work Surface		4
		\$(GCDRLAM)	Core Dir Lam Opts		
MAX	MSU	M-MDWRT2472	Desking 24D x 72W Rectangular Work Surface		2
		\$(GCDRLAM)	Core Dir Lam Opts		
MAX	MSR	M-SC183664-R	Storage Cabinet, 36"Wx18"Dx64"H		1
			NEMSCHOFF FURNITURE		
NEM	NEM	BDXXAX-OB30	Bariatric Bariatric Chair	SEATING	17
		6093	No - Multiple Fabrics		
		S4	SERIES: Series 4 Fabric		
		NEMPER	CO-NAME: *Nemschoff Performan		
		1011	No - CTB133		
		1148	C - Chicago Arm Cap Detail.		
		1226	C - Chicago foot detail.		
		1171	W - Wood Rail.		
NEM	NEM	BDXXAX-OB40	Bariatric Bariatric Chair	SEATING	1
		6093	No - Multiple Fabrics		
		S4	SERIES: Series 4 Fabric		
		NEMPER	CO-NAME: *Nemschoff Performan		
		1011	No - CTB133		
		1148	C - Chicago Arm Cap Detail.		
		1226	C - Chicago foot detail.		

NEM

NEM

Body Bilt
Hon
Maxon
Nemchoff

	1171	W - Wood Rail.		
NEM	SDX000-T100	Cities Tables Downtown Freestanding Table		9
	1328	C-Chicago Edge Detail		
NEM	SDXXXX-10SX	Downtown-Small Lounge Chair	SEATING	30
	6093	No - Multiple Fabrics		
	S4	SERIES: Series 4 Fabric		
	NEMPER	CO-NAME: *Nemschoff Performan		
	1011	No - CTB133		
	1148	C - Chicago Arm Cap Detail.		
	1226	C - Chicago foot detail.		
	1223	B - Square back with wipe-out		
	1171	W - Wood Rail.		
	1175	0 - No table attachments.		
		MISC Installs		
Chief	KC2C220B	Chief Dual Monitor Mounts - Drill Hole in Desk or Lip Mounted per VA Requirements	Monitor Mounts	64
3M	CS200MB	3M Computer Mounts - Under Desk	Computer Mount	64