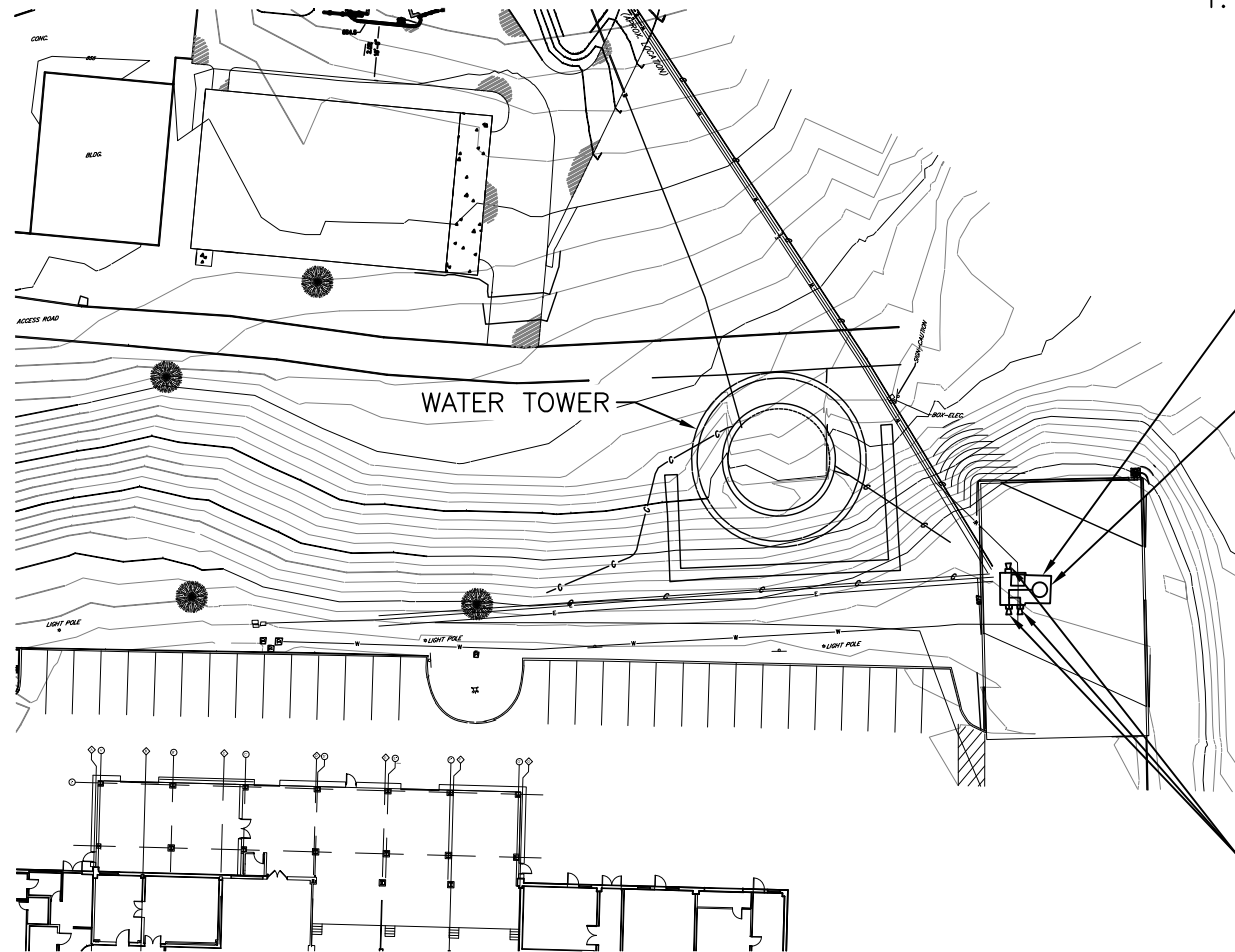


NOTE

1. CONTRACTOR TO NOTE THAT EXISTING WATER MAINS INCLUDE ASBESTOS CEMENT PIPE (ACP). CONTRACTOR TO ACT IN ACCORDANCE WITH SPECIFICATION SECTION 02 82 13.32 – ASBESTOS CEMENT PIPE ABATEMENT, WHEN REMOVING OR WORKING NEAR EXISTING ASBESTOS CEMENT PIPE.



APPROXIMATE LOCATION OF VAULT/VALVE CHAMBER

VALVE CHAMBER TO BE CUT AND REMOVED TO 3' BELOW GRADE. PUNCTURE CHAMBER FLOOR TO PROMOTE DRAINAGE AND BACKFILL CHAMBER WITH CLEAN STONE. ALL PIPING AND APPURTENANCES CONTAINED WITHIN TO BE ABANDONED IN PLACE (SEE NOTE 1)

VALVE CHAMBER PIPING TO BE CUT AND CAPPED OUTSIDE OF VAULT WALL (TYP.)

CONSTRUCTION NOTE:

1. CONTRACTOR TO COORDINATE WITH VAMC PROJECT NUMBER: WBVAMC-693-13-109, PROJECT NAMED: UPGRADE FIRE PROTECTION PIPING AND LOOP. REMOVAL OF MANHOLE NOT TO BE INITIATED UNTIL MENTIONED PROJECT IS COMPLETED.

1 SITE SKETCH
 SKC-1 SCALE: 1" = 60'-0"

JOB TITLE: VAMC WILKES-BARRE WAREHOUSE RENOVATION PROJECT NUMBER: 693-12-055	DRAWING TITLE: CIVIL SKETCH 1	DATE: 08/07/17 PAGE SIZE: 8-1/2"x11" JOB NUMBER: 693-12-055	DRAWING BY: D. PFEFFER SKETCH NUMBER: SKC-1
---	---	---	--