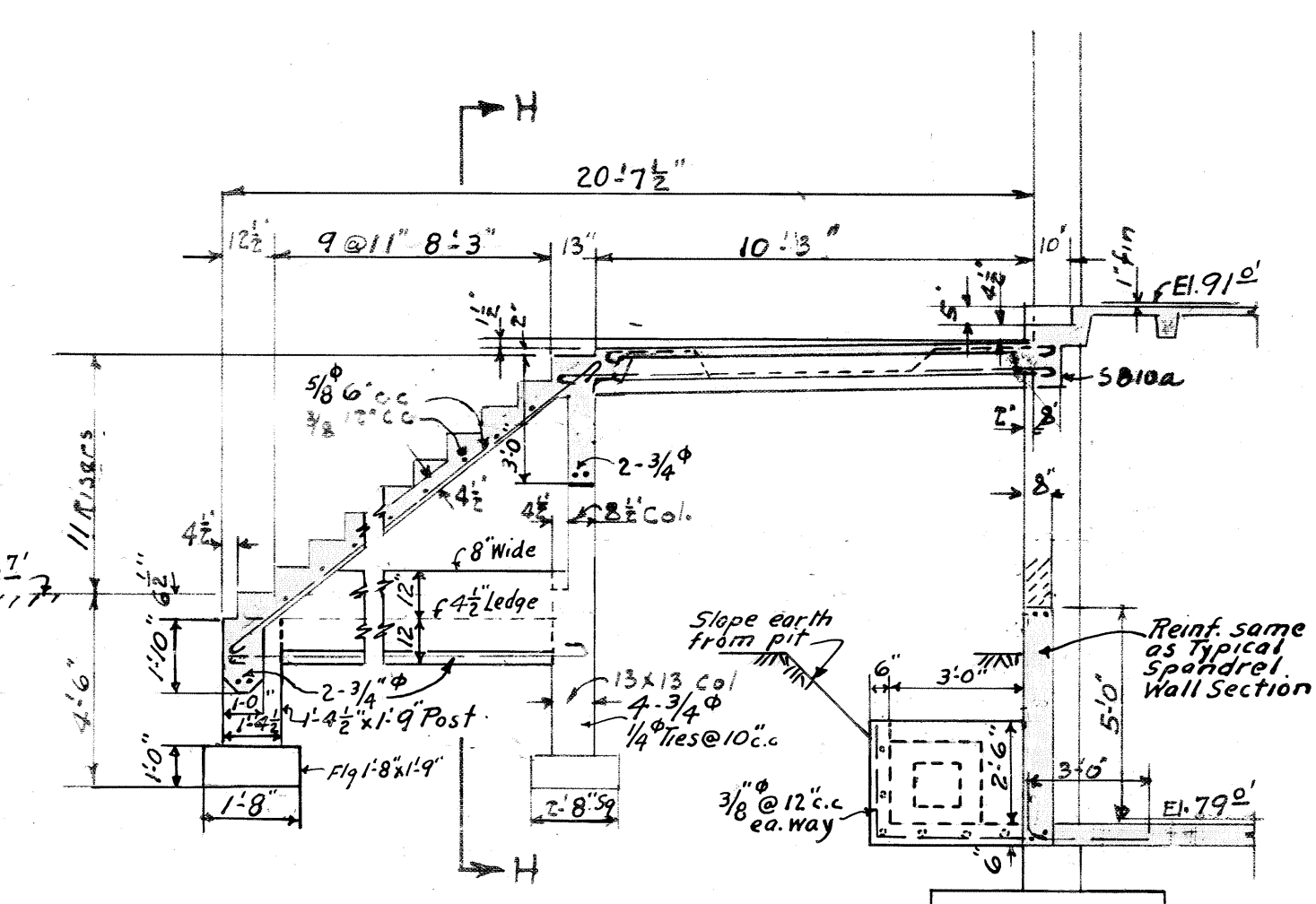
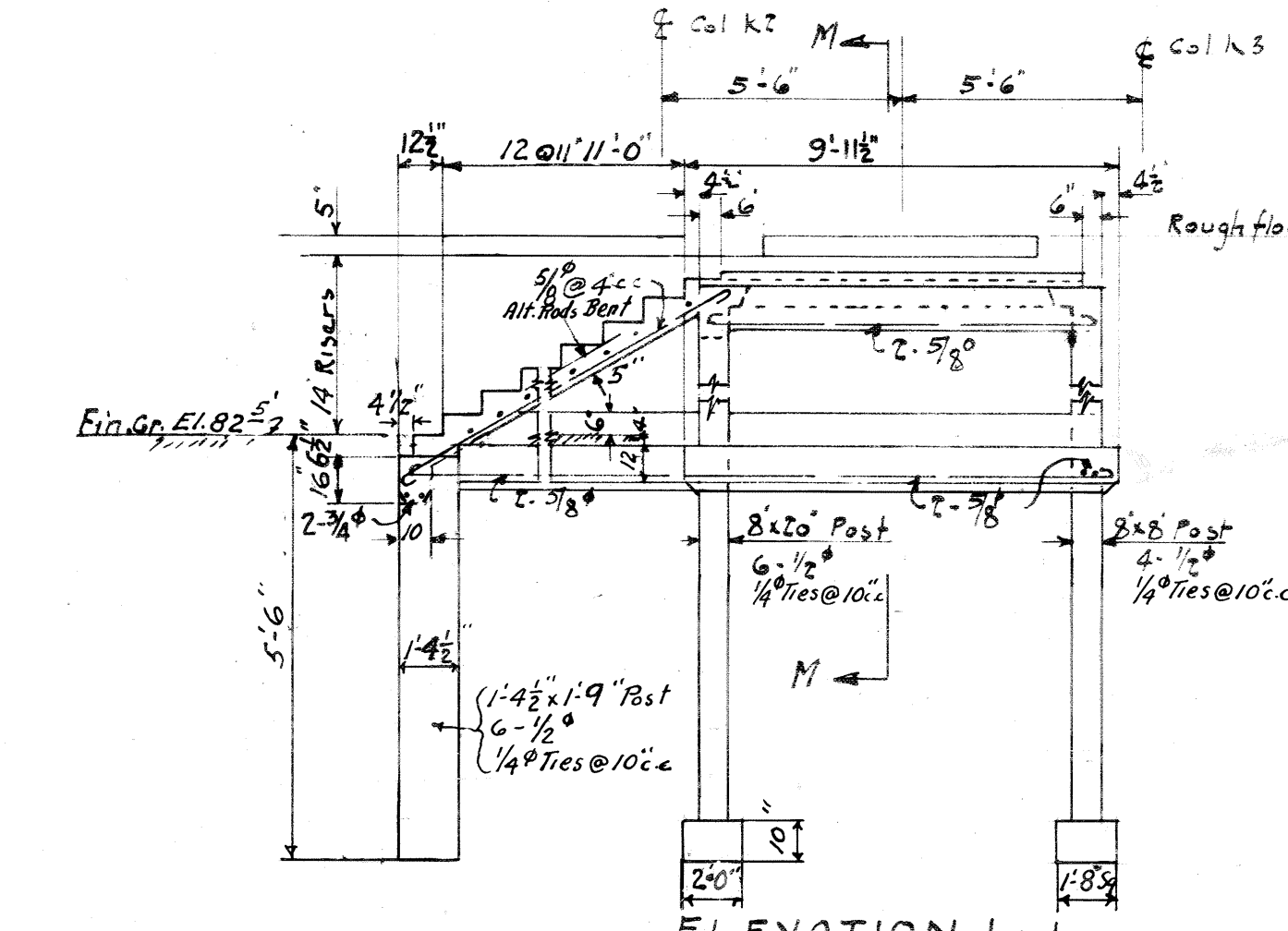


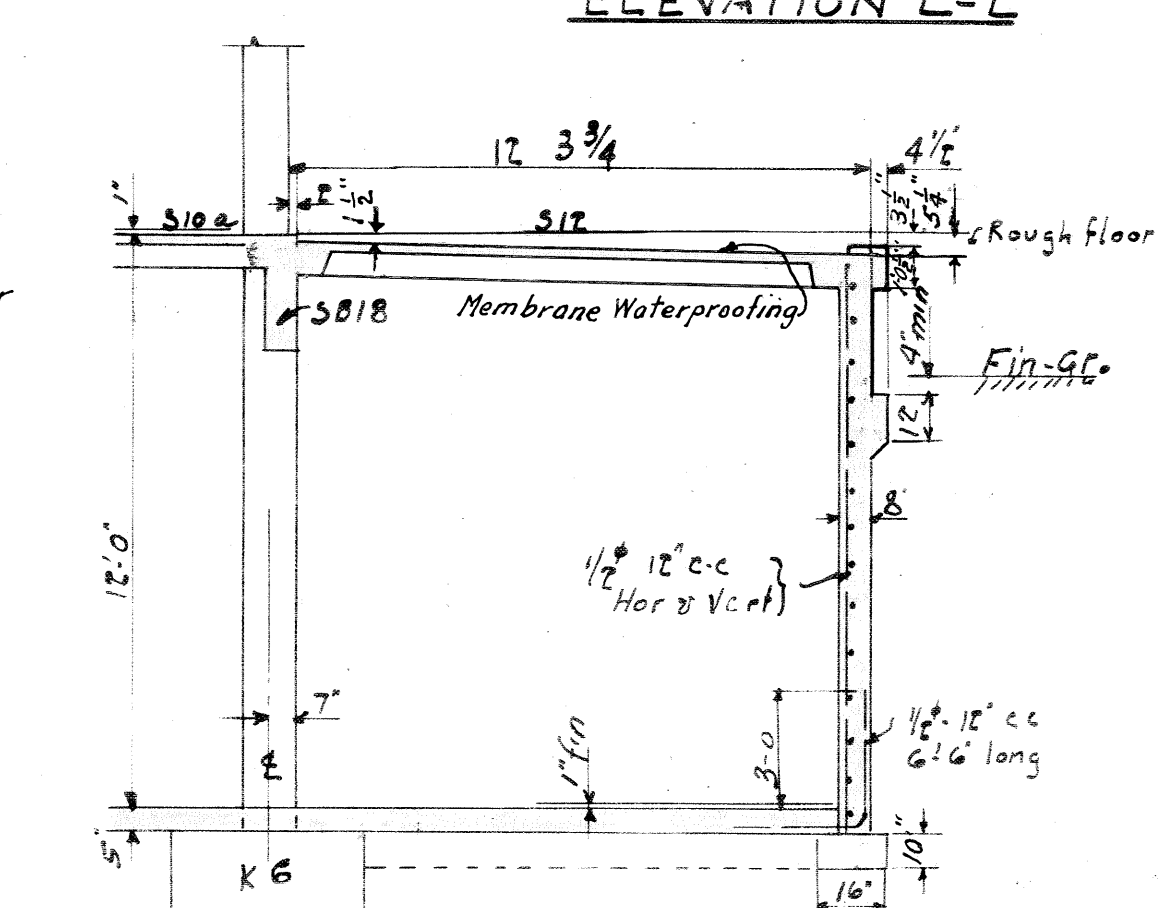
BASEMENT & FOUNDATION PLAN



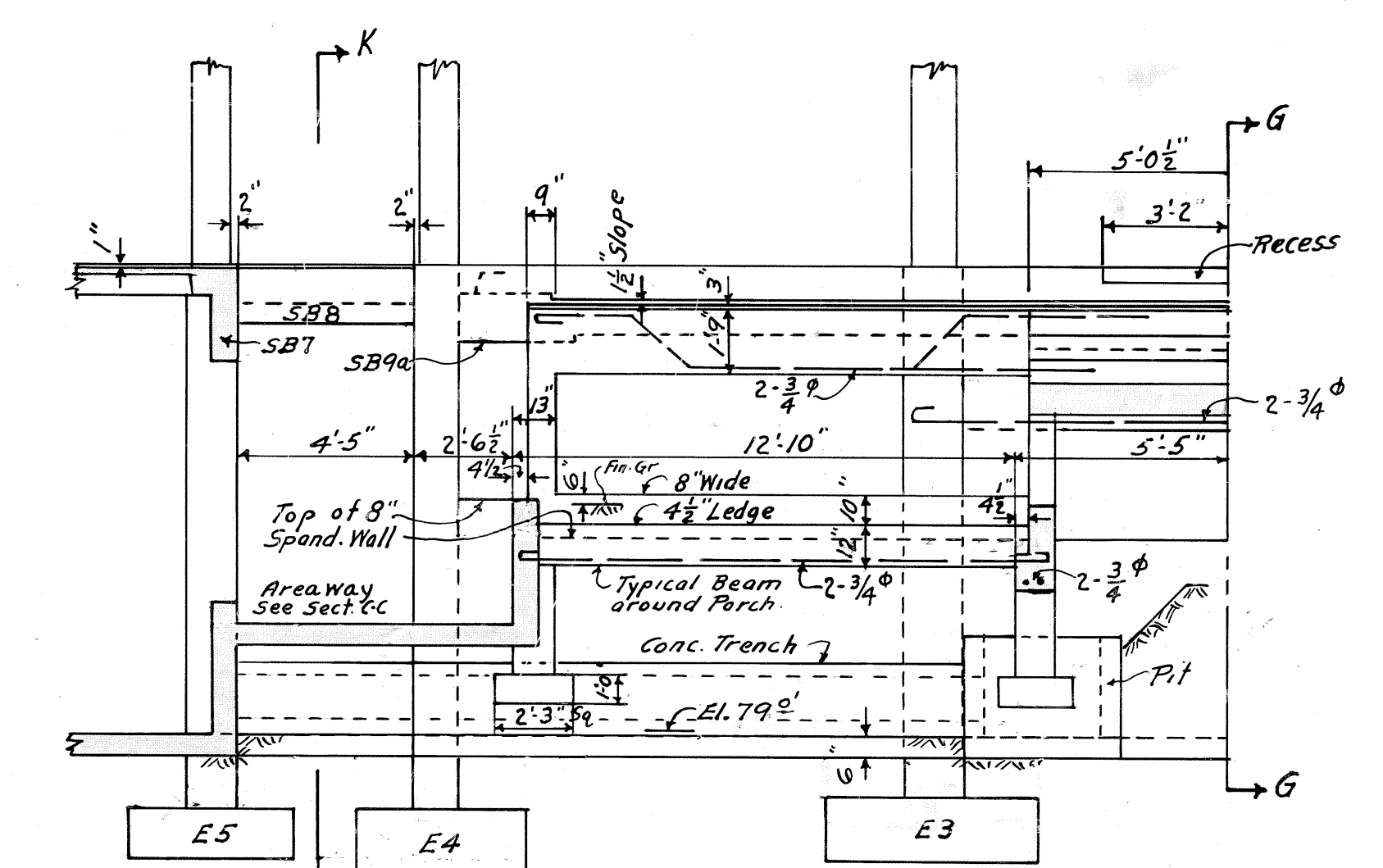
SECTION G-G



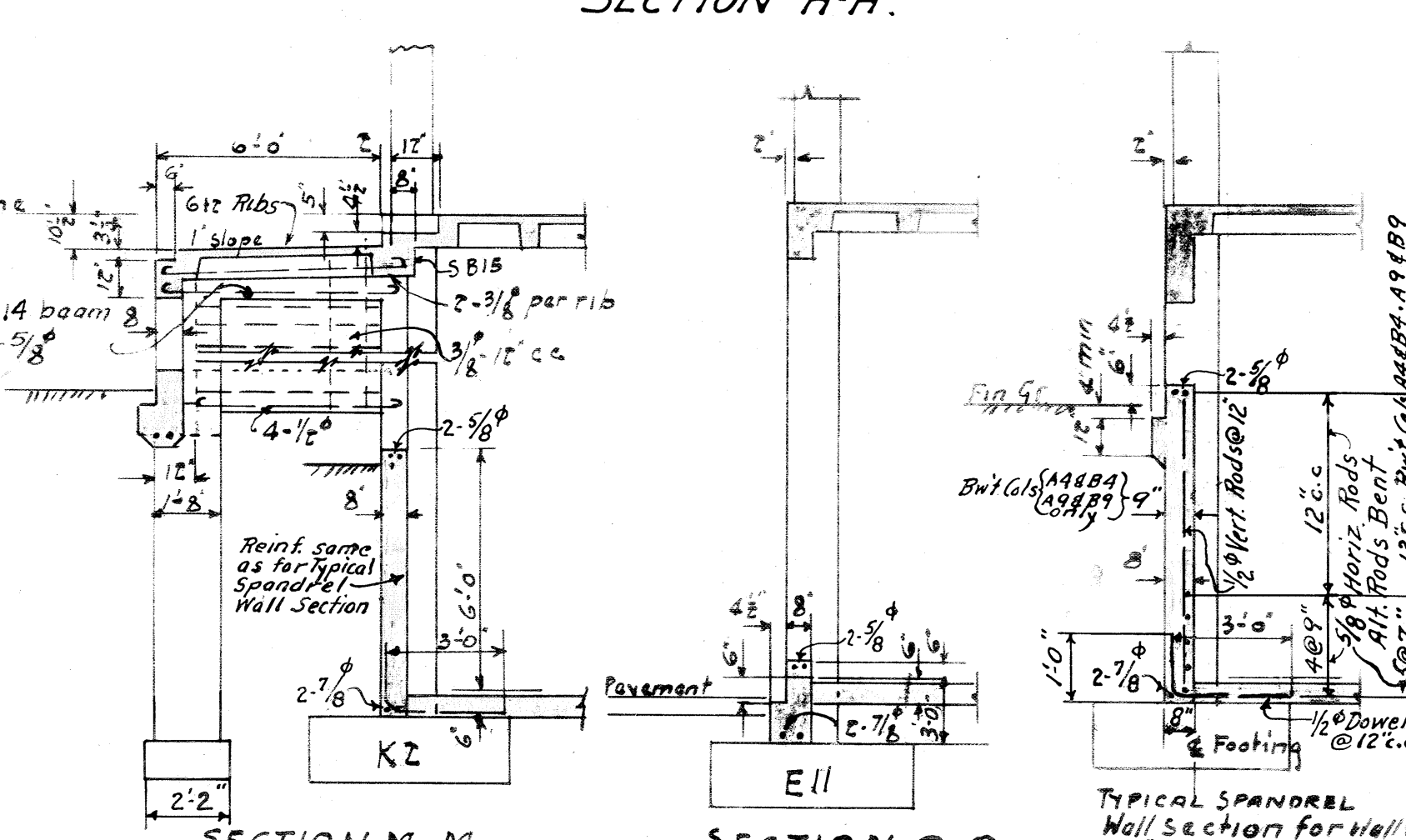
ELEVATION L-L



SECTION N-N
Typical for Wall under Porch

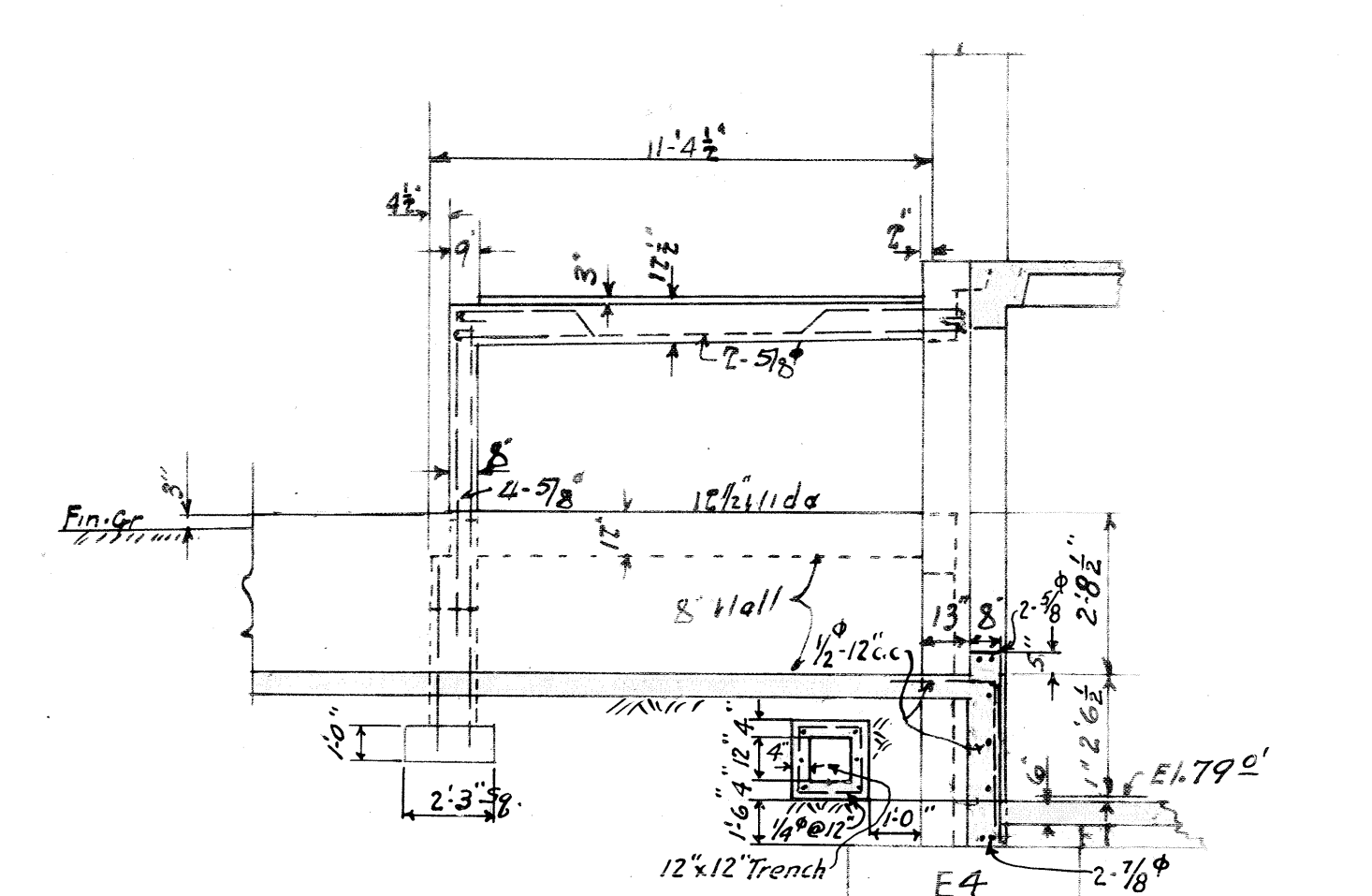


SECTION H-H



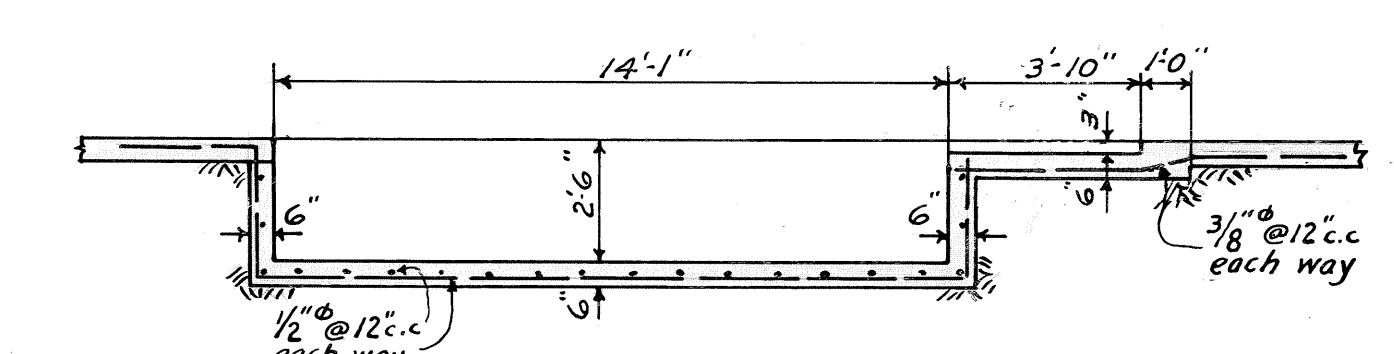
SECTION M-M

SECTION O-O
TYPICAL BETWEEN COLS. E8-E12 UNLESS OTHERWISE SHOWN



SECTION K-K
Opposite Hand

Note: See Mech. and Arch. dgs. for details not shown.
Figures in parenthesis of footings show distance of top of footing below El. 79'. Top of footings not otherwise shown are 6' below El. 79'.
Footings are centered on column above in all cases.
Footings are designed for a soil pressure of 6000 #/sq. ft. and shall be carried to a soil strata capable of safely sustaining such a load (See Specifications for Earthwork).



SECTION P-P

VETERANS ADMINISTRATION
WASHINGTON, D. C.
APPROVED: *Frank J. Jones*
ADMINISTRATOR
George J. Jones
ASST. ADMINISTRATOR
W. J. Jones
CHIEF, TECHNICAL DIVISION

For General Notes, see Dwg. 1-22

BLDG. #2

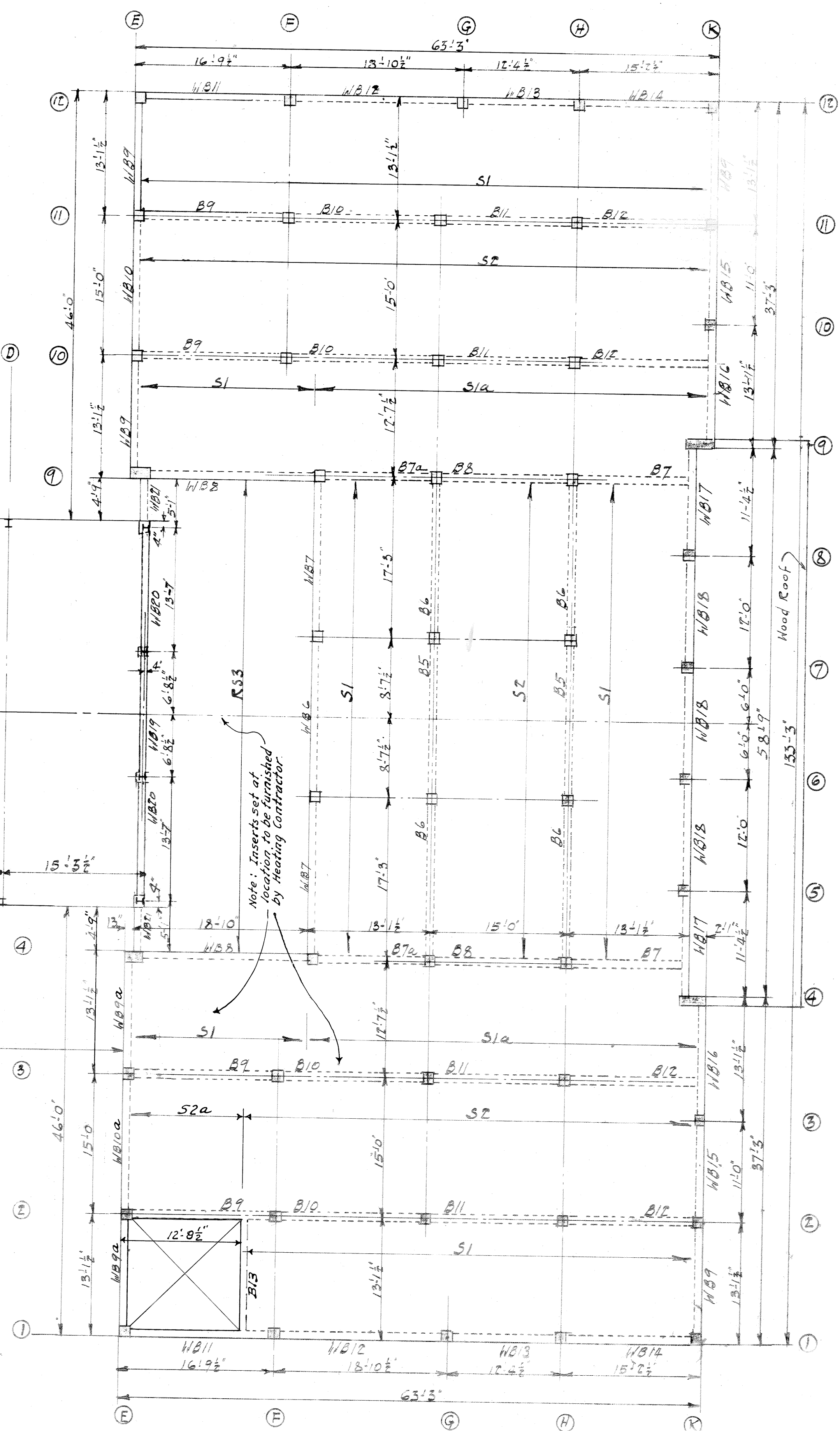
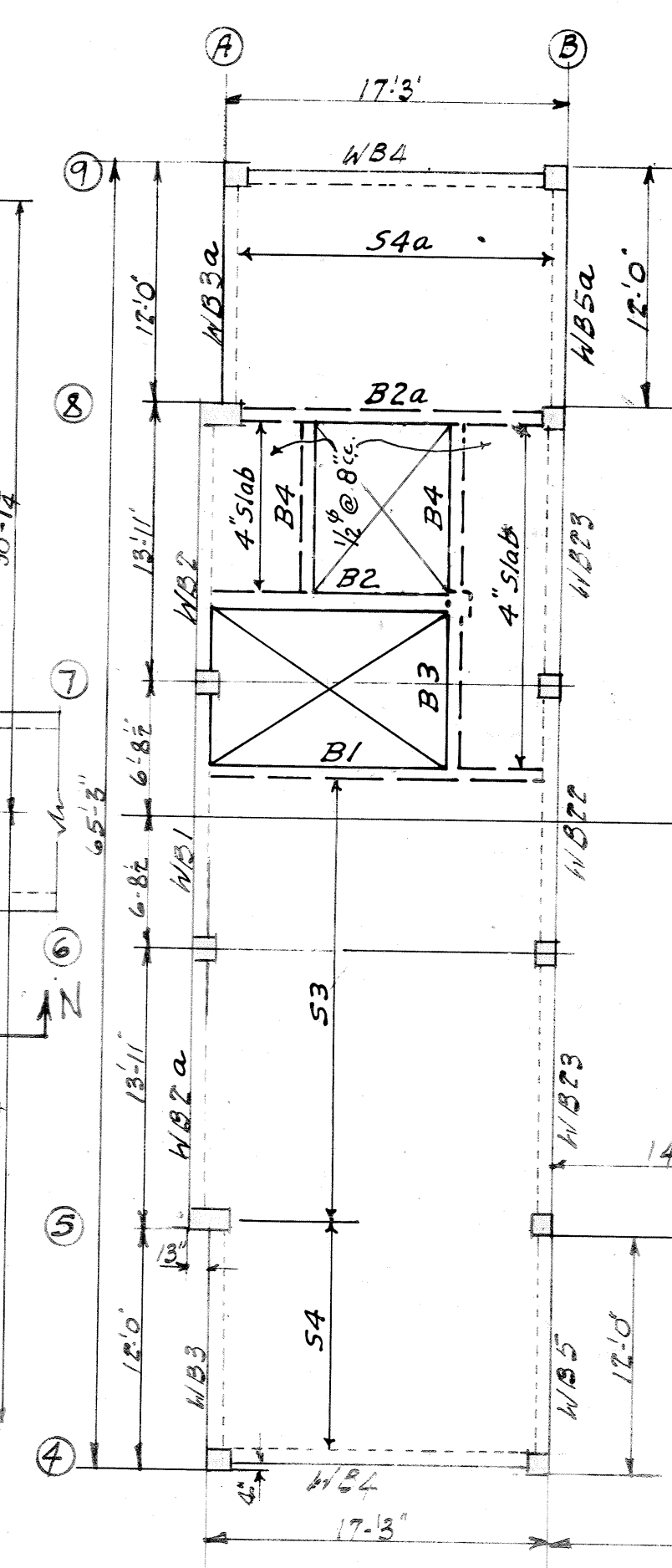
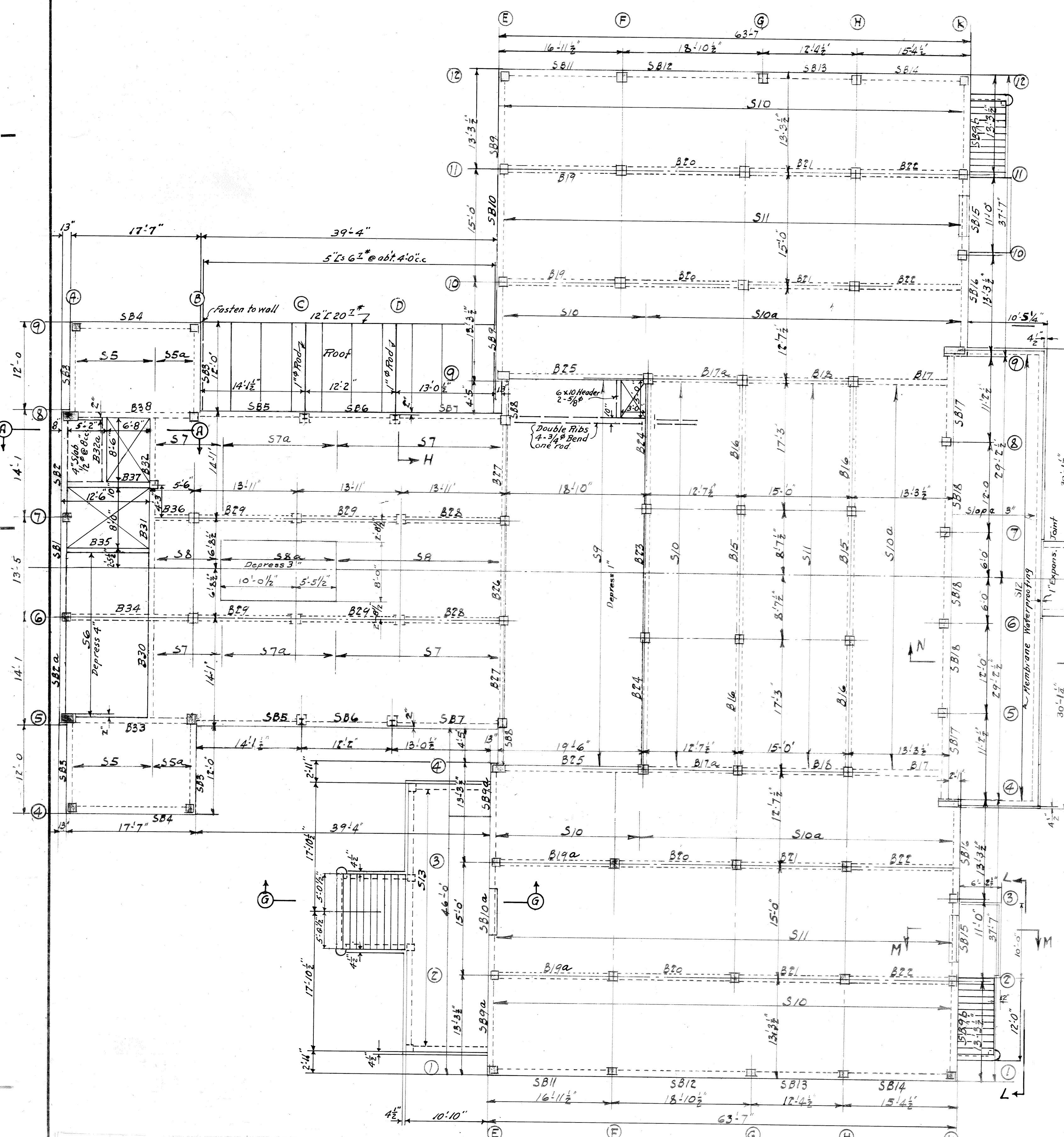
DINING HALL & ATTENDANTS QTRS.

VETERANS ADM. HOSPITAL No. _____

FAYETTEVILLE ARK.

Drawn: ARB	REVISIONS	NUMBER
Traced: YBC		2-8
Checked: HBC		Sheet 8 of 22
Date: May 14, 1932		

FILE FOLDER NO. 4



Note: Inserts set at location to be furnished by Heating Contractor.

VETERANS ADMINISTRATION
WASHINGTON, D. C.
OFFICE OF Frank B. Jones
ADMINISTRATOR
George Davis
ASSISTANT ADMINISTRATOR
W. P. Jacobsen
DIRECTOR OF INSTRUCTION
RECORDS MANAGEMENT DIVISION

FIRST FLOOR FRAMING PLAN

2nd FLOOR FRAMING PLAN

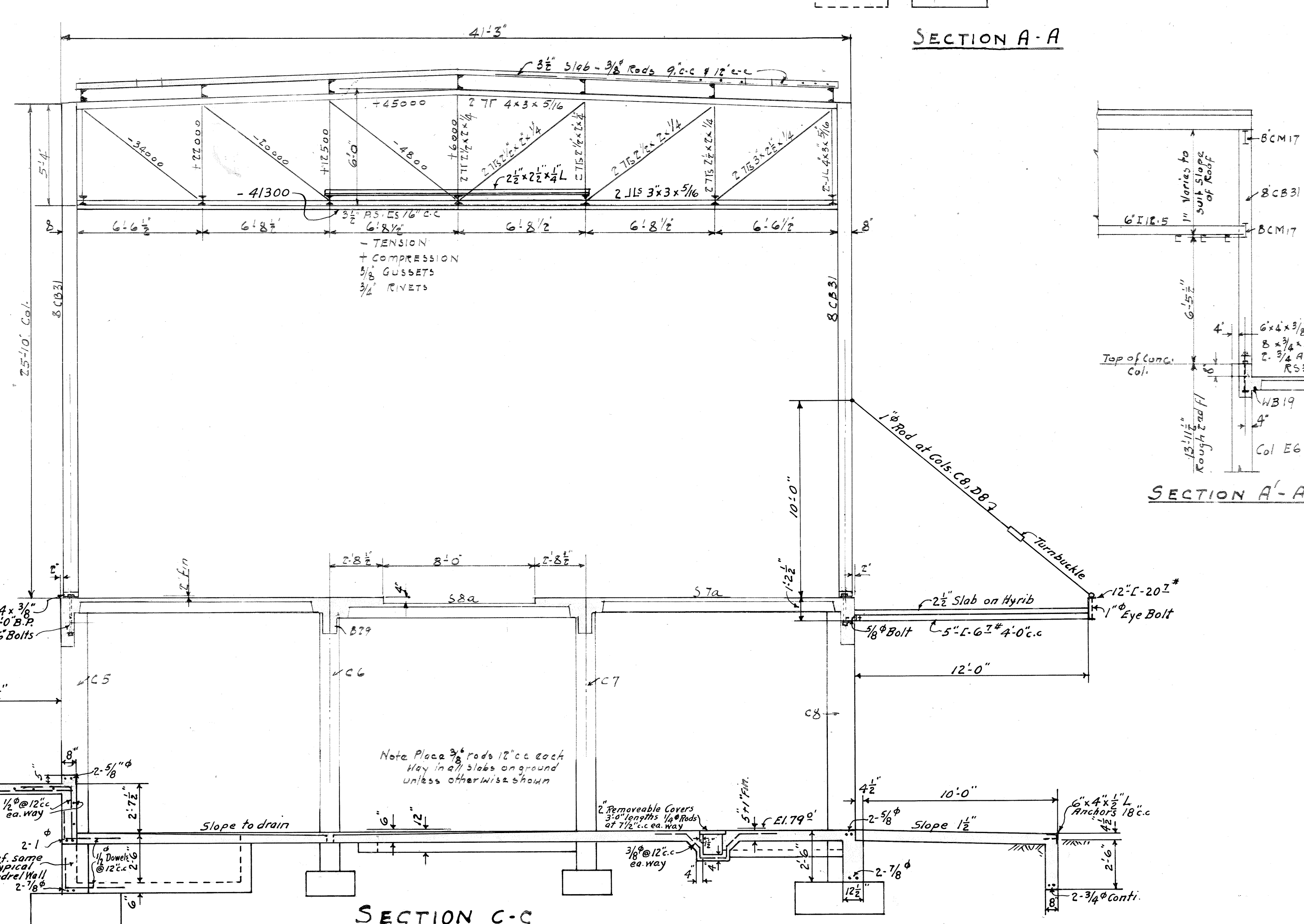
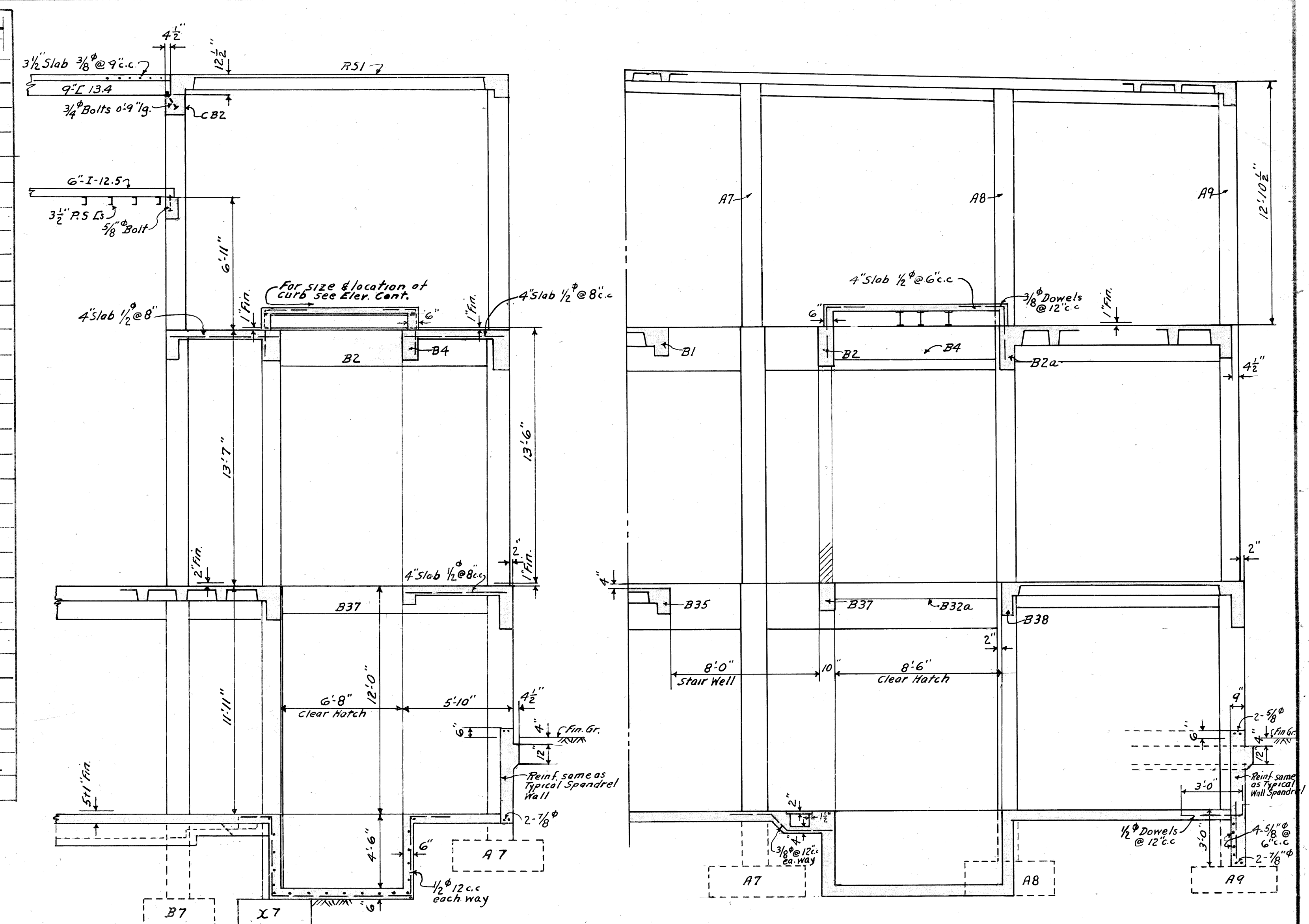
(N)		(K)	BLDG #2	
DINING HALL & ATTENDANTS QTRS				
VETERANS ADM. HOSPITAL N.				
FAYETTEVILLE ARK.				
Drawn <i>AK</i>	REVISIONS		NUMBER	
Traced <i>AK</i>			2-9	
Checked <i>HBC</i>				
Date <i>May 14, 1932</i>			Sheet 9 of 22	

RETURN TRACINGS TO PLAN FILES

Ali. Col. S.C. 5074
FILE FOLDER NO. 4

COLUMN SCHEDULE					
MARK	FOOTING	NO. OF REIN. BARS	SUPPORTING FIRST FLOOR	SUPP. SECOND FLOOR	SUPP. ROOF OR CEILING
A4, A9, B4, B9	4'-9" x 4'-9"	16	16 x 16	12 x 12	12 x 12
A5	4'-10" x 5'-3"	13	16 x 16	12 x 12	12 x 12
A6	5'-3" x 5'-3"	14	16 x 16	13 x 13	12 x 12
A7	5'-1" x 5'-10"	17	16 x 16	12 x 12	12 x 12
A8	5'-0" x 5'-0"	15	16 x 16	12 x 12	12 x 12
B5	4'-8" x 4'-8"	13	16 x 16	12 x 12	12 x 12
B6, B7	5'-0" x 5'-0"	16	16 x 16	14 x 14	12 x 12
B8	4'-8" x 4'-8"	15	16 x 16	12 x 12	12 x 12
C5, C6, D5, D8	4'-8" x 4'-8"	16	16 x 16	12 x 12	12 x 12
C6, C7, D6, D7	4'-8" x 4'-8"	16	16 x 16	12 x 12	12 x 12
E1, E12	5'-6" x 5'-6"	17	16 x 16	14 x 14	12 x 12
E2, E3	4'-5" x 5'-5"	12	16 x 16	12 x 12	12 x 12
E4, E9	4'-4" x 4'-4"	15	16 x 16	12 x 12	12 x 12
E5, E8	4'-0" x 4'-0"	11	16 x 16	12 x 12	12 x 12
E6, E7	5'-3" x 5'-3"	17	16 x 16	14 x 14	12 x 12
E10, E11	5'-2" x 5'-2"	16	16 x 16	13 x 13	12 x 12
F1, F12	4'-9" x 4'-9"	16	16 x 16	14 x 14	12 x 12
F2, F3	5'-2" x 5'-2"	16	16 x 16	14 x 14	12 x 12
F4, F9	4'-8" x 4'-8"	14	16 x 16	13 x 13	12 x 12
F6, F7	4'-6" x 4'-6"	13	16 x 16	14 x 14	12 x 12
F10, F11	4'-10" x 4'-10"	15	16 x 16	12 x 12	12 x 12
G1, G12	4'-4" x 4'-4"	13	16 x 16	14 x 14	12 x 12
G2, G3, G10, G11	4'-8" x 4'-8"	13	16 x 16	14 x 14	12 x 12
G4, G9, H4, H9	4'-8" x 4'-8"	13	16 x 16	14 x 14	12 x 12
G6, G7, H6, H7	4'-4" x 4'-4"	13	16 x 16	12 x 12	12 x 12
H1, H12	4'-5" x 4'-5"	14	16 x 16	14 x 14	12 x 12
H2, H3, H10, H11	4'-4" x 4'-4"	14	16 x 16	12 x 12	12 x 12
K1, K12	5'-2" x 5'-2"	16	16 x 16	13 x 13	12 x 12
K2, K3, K10, K11	4'-4" x 4'-4"	14	16 x 16	12 x 12	12 x 12
K4, K9	4'-2" x 4'-2"	11	16 x 16	12 x 12	12 x 12
K5, K6, K7, K8	4'-0" x 4'-0"	9	16 x 16	12 x 12	12 x 12
X7	4'-0" x 4'-0"	9	16 x 16	12 x 12	12 x 12

SLAB SCHEDULE					
MARK	b	h	NO. SIZE	NO. SIZE	REMARKS
S1	5'	6"	1 5/8"	1 5/8"	
S2	"	6"	1 5/8"	1 5/8"	
S3	"	10"	1 3/4"	1 7/8"	
S10a	"	6"	1 5/8"	1 5/8"	
S4	"	10"	1 3/4"	1 7/8"	
S4a	"	10"	1 3/4"	1 7/8"	
S5	"	6"	1 5/8"	1 5/8"	
S5a	"	6"	1 5/8"	1 5/8"	
S6	"	6"	1 3/4"	1 3/4"	
S7	"	6"	1 5/8"	1 5/8"	
S7a	"	6"	1 5/8"	1 5/8"	
S8	"	6"	1 5/8"	1 5/8"	
S8a	"	6"	1 5/8"	1 5/8"	
S9	"	8"	1 3/4"	1 3/4"	
S10	"	6"	1 1/2"	1 5/8"	
S10a	"	6"	1 1/2"	1 5/8"	
S11	"	6"	1 5/8"	1 5/8"	
S12	"	6"	1 5/8"	1 3/4"	
S13	"	6"	1 5/8"	1 5/8"	
S14	"	6"	1 3/4"	1 3/4"	
S15	5'	6"	1 3/8"	1 1/2"	
S16	"	6"	1 5/8"	1 1/2"	
S17	"	6"	1 3/8"	1 1/2"	
S18	"	6"	1 3/8"	1 1/2"	
S19	"	6"	1 3/8"	1 1/2"	
S20	"	6"	1 3/8"	1 1/2"	
S21	"	6"	1 3/8"	1 1/2"	
S22	"	6"	1 3/8"	1 1/2"	
S23	"	6"	1 3/8"	1 1/2"	
S24	"	6"	1 3/8"	1 1/2"	
S25	"	6"	1 3/8"	1 1/2"	
S26	"	6"	1 3/8"	1 1/2"	
S27	"	6"	1 3/8"	1 1/2"	
S28	"	6"	1 3/8"	1 1/2"	
S29	"	6"	1 3/8"	1 1/2"	
S30	"	6"	1 3/8"	1 1/2"	
S31	"	6"	1 3/8"	1 1/2"	
S32	"	6"	1 3/8"	1 1/2"	
S33	"	6"	1 3/8"	1 1/2"	
S34	"	6"	1 3/8"	1 1/2"	
S35	"	6"	1 3/8"	1 1/2"	
S36	"	6"	1 3/8"	1 1/2"	
S37	"	6"	1 3/8"	1 1/2"	
S38	"	6"	1 3/8"	1 1/2"	
S39	"	6"	1 3/8"	1 1/2"	
S40	"	6"	1 3/8"	1 1/2"	
S41	"	6"	1 3/8"	1 1/2"	
S42	"	6"	1 3/8"	1 1/2"	
S43	"	6"	1 3/8"	1 1/2"	
S44	"	6"	1 3/8"	1 1/2"	
S45	"	6"	1 3/8"	1 1/2"	
S46	"	6"	1 3/8"	1 1/2"	
S47	"	6"	1 3/8"	1 1/2"	
S48	"	6"	1 3/8"	1 1/2"	
S49	"	6"	1 3/8"	1 1/2"	
S50	"	6"	1 3/8"	1 1/2"	
S51	"	6"	1 3/8"	1 1/2"	
S52	"	6"	1 3/8"	1 1/2"	
S53	"	6"	1 3/8"	1 1/2"	
S54	"	6"	1 3/8"	1 1/2"	
S55	"	6"	1 3/8"	1 1/2"	
S56	"	6"	1 3/8"	1 1/2"	
S57	"	6"	1 3/8"	1 1/2"	
S58	"	6"	1 3/8"	1 1/2"	
S59	"	6"	1 3/8"	1 1/2"	
S60	"	6"	1 3/8"	1 1/2"	
S61	"	6"	1 3/8"	1 1/2"	
S62	"	6"	1 3/8"	1 1/2"	
S63	"	6"	1 3/8"	1 1/2"	
S64	"	6"	1 3/8"	1 1/2"	
S65	"	6"	1 3/8"	1 1/2"	
S66	"	6"	1 3/8"	1 1/2"	
S67	"	6"	1 3/8"	1 1/2"	
S68	"	6"	1 3/8"	1 1/2"	
S69	"	6"	1 3/8"	1 1/2"	
S70	"	6"	1 3/8"	1 1/2"	
S71	"	6"	1 3/8"	1 1/2"	
S72	"	6"	1 3/8"	1 1/2"	
S73	"	6"	1 3/8"	1 1/2"	
S74	"	6"	1 3/8"	1 1/2"	
S75	"	6"	1 3/8"	1 1/2"	
S76	"	6"	1 3/8"	1 1/2"	
S77	"	6"	1 3/8"	1 1/2"	
S78	"	6"	1 3/8"	1 1/2"	
S79	"	6"	1 3/8"	1 1/2"	
S80	"	6"	1 3/8"	1 1/2"	
S81	"	6"	1 3/8"	1 1/2"	
S82	"	6"	1 3/8"	1 1/2"	
S83	"	6"	1 3/8"	1 1/2"	
S84	"	6"	1 3/8"	1 1/2"	
S85	"	6"	1 3/8"	1 1/2"	
S86	"	6"	1 3/8"	1 1/2"	
S87	"	6"	1 3/8"	1 1/2"	
S88	"	6"	1 3/8"	1 1/2"	
S89	"	6"	1 3/8"	1 1/2"	
S90	"	6"	1 3/8"	1 1/2"	
S91	"	6"	1 3/8"	1 1/2"	
S92	"	6"	1 3/8"	1 1/2"	
S93	"	6"	1 3/8"	1 1/2"	
S94	"	6"	1 3/8"	1 1/2"	
S95	"	6"	1 3/8"	1 1/2"	
S96	"	6"	1 3/8"	1 1/2"	
S97	"	6"	1 3/8"	1 1/2"	
S98	"	6"	1 3/8"	1 1/2"	
S99	"	6"	1 3/8"	1 1/2"	
S100	"	6"	1 3/8"	1 1/2"	



VETERANS ADMINISTRATION
WASHINGTON, D. C.

APPROVED *Frank D. Hines*
ADMINISTRATOR

George L. Davis
ASSISTANT ADMINISTRATOR

W. C. Davis
DIRECTOR OF CONSTRUCTION

CHIEF, TECHNICAL DIVISION

BLDG #2
DINING HALL ATTENDANTS QTRS.

VETERANS ADM. HOSPITAL NO.
FAYETTEVILLE ARK.

Drawn *ABC*
Traced *ABC*
Sect. Chf. *ABC*

REVISIONS

NUMBER
2-11

Date May 14, 1932

Sub-Division Chief *John W. Kern*

FILE FOLDER NO. 4

RETURN TRACINGS TO PLAN FILES