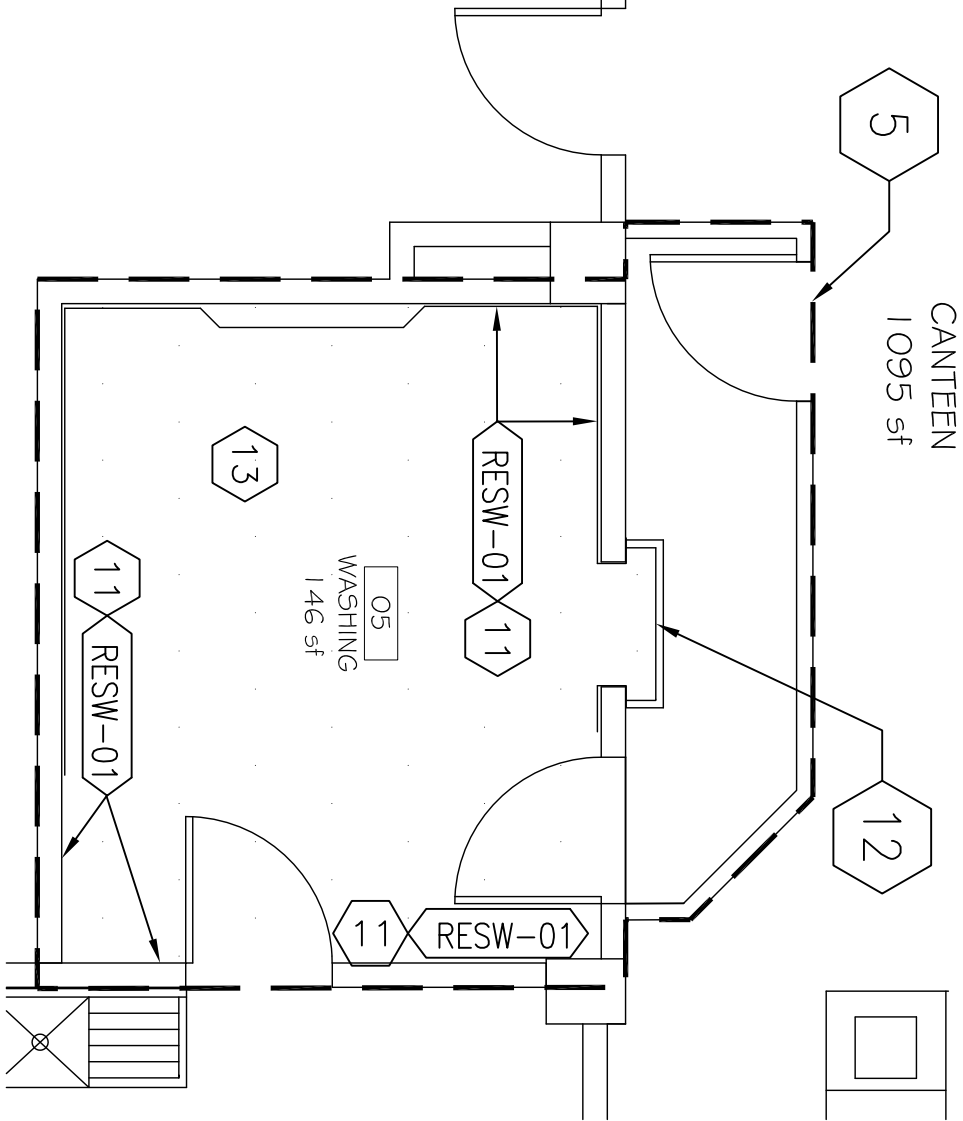


MATERIAL TYPE LEGEND

MARK	MANUFACTURER	PATTERN / LINE	STYLE	SIZE	COLOR	FINISH	COMMENTS
RESINOUS FLOORING / INTEGRAL BASE – SPEC SECTION 09 67 23.60							
RES-01	SIKA (OR EQUAL)	TBD BY COR	SOLID		122NA PURCEM		MEDIUM DUTY, SELF-LEVELING BROADCAST CEMENTITIOUS URETHANE SLURRY
WALLS							
PAINT – SPEC SECTION 09 91 00							
P-01	*SHERWIN-WILLIAMS (OR EQUAL)				TBD BY COR	SEMI-GLOSS	USE FOR ALL WALLS AND SOFFITS NOT RECEIVING EPOXY WALL COATING
P-02	*SHERWIN-WILLIAMS (OR EQUAL)				SW6385 DOVER WHITE	GLOSS	USE FOR ALL DOOR AND WINDOW TRIM
RESINOUS WALL COATINGS – SPEC SECTION 09 67 23.20							
RESW-01	SIKA (OR EQUAL)	SIKAGARD DUROPLAST		1/4 "FLAKE	DECO-FLAKE	GLOSS	HIGH PERFORMANCE WATER BASED EPOXY BLOCKFILLER

LIGHTING FIXTURE SCHEDULE

TYPE	MANUFACTURERS	CATALOG INFORMATION	LAMP DATA		INPUT	VOLTAGE	MOUNTING	FIXTURE DESCRIPTION	REMARKS
			QTY	TYPE					
	WILLIAMS (OR EQUAL)	50							
13			4	LED	20	120	22/2 RECESSED	FULL DOOR FRAME, NO REVEAL WHITE FLAT STEEL W/ FROSTED ACRYLIC RATED FOR WET LOCATION	PROVIDE NEW FIXTURES FOR CANTEN DISH ROOM INCLUDE NEW CONTROLS RATED FOR WET AREA TYPE MINIMUM 3000 LUMENS



CANTEN DISH ROOM FLOOR PLAN

Scale: NTS

UPDATED BY: CGS	8/9/17
Approved: VHSO Facility Manager	
Approved: Engineering Service Chief	
Notes and/or Revisions:	Date

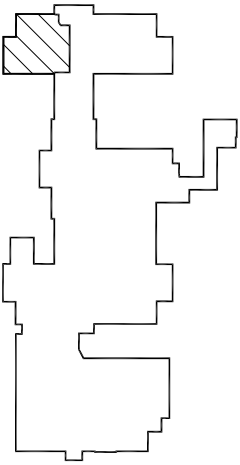
Keyed Work Notes:

- 1 SAW CUT CONCRETE AND DEMO.
- 2 INSTALL A NEW CONCRETE TRENCH DRAIN COMPLETE WITH, BUT NOT LIMITED TO, PERIMETER STAINLESS STEEL ANGLE (1-1/4 X 1-1/4 X 1/4 TYPE 304) – EMBEDDED AND ANCHORED (STAINLESS STEEL TYPE 304 ANCHORS) FRAME, 12 INCH WIDE STAINLESS STEEL BAR GRATING TRENCH COVER (MCNICHOLS TYPE 304 STAINLESS STEEL, GW 100 (1 X 1 X 3/16) WITH LOAD BANDING AND UNIFORM STUBS – OR EQUAL), TYPE 304 STAINLESS STEEL COLLECTION BOX WITH REMOVABLE TYPE 304 STAINLESS STEEL LINT STRAINER BASKET OVER NEW 8 INCH DRAIN PIPE INLET.
- 3 INSTALL NEW 8 INCH CPVC DRAIN SHALL DISCHARGE INTO A DRAIN REDUCER.
- 4 PATCH CONCRETE.
- 5 NEW PAINTED 4" TEMPORARY WALL TO CEILING OR WITH INSTALLED ACOUSTICAL CEILING.
- 6 INSTALL NEW INPRO 51SS STAINLESS STEEL WALL GUARDS WITH RETURNS (OR EQUAL) MOUNTED 36" AFF.
- 7 EPOXY WALL COATING TO 6'-0" AFF.
- 8 EPOXY WALL COATING FROM COVE TO TOP OF EXISTING WALL TILE. IF MANUFACTURER WILL WARRANTY WALL COVER OVER THE EXISTING TILE THEN CONTRACTOR MAY LEAVE WALL TILE IN PLACE.
- 9 REMOVE WALL TILE AND ADD NEW SUB-STRAIGHT PER MANUFACTURERS SPECS. ADD NEW EPOXY WALL COVERING FROM COVE TO 6' ABOVE FINISH FLOOR. ADD STAINLESS STEEL CORNER GUARDS PER SPECIFICATIONS.
- 10 REMOVE WALL PROTECTION AND INSTAL NEW EPOXY WALL COVERING FROM COVE TO 6'-0" AFF.
- 11 REMOVE ALL EXISTING WALL TILE. ADD NEW MANUFACTURER'S APPROVE SUB-STRAIGHT. INSTALL NEW EPOXY WALL COVERING FROM FINISHED FLOOR TO CEILING GRID.
- 12 CONTRACTOR SHALL REMOVE EXISTING SERVICE WINDOW AND CONSTRUCT A WALL IN THE WINDOW LOCATION. THE CONTRACTOR SHALL REPAIR MOISTURE DAMAGE PRIOR TO FINISHING THE WALLS. THE SERVICE LINE WALLS, COUNTER, AND BACK SPLASH SHALL BLEND SEAMLESSLY WITH THE EXISTING WALL, COUNTER AND BACK SPLASH.
- 13 DEMO CEILING GRID, TILES, LIGHT FIXTURES, AND LIGHTING CONTROLS LOCATED IN THE DISH ROOM. CONTRACTOR SHALL INSTALL NEW CEILING GRID, CEILING TILES, LIGHT FIXTURES, AND LIGHTING CONTROLS PER SPECIFICATIONS. ALL SPRINKLER HEADS, SPEAKERS, HVAC REGISTERS SHALL STAY IN PLACE. COR SHALL APPROVE LIGHTING LAYOUT.

SYMBOLS LEGEND

- EXISTING WALL, DOOR, WINDOW, MILLWORK, FIXTURE OR OTHER FIXTURE OR ASSEMBLY TO REMAIN.
- NEW PAINTED 4" TEMPORARY WALL. 42"x84" LOCKABLE DOOR AND FRAME AT LOCATION SHOWN SHALL HAVE SEALS AND SWEEPS TO MITIGATE DUST MIGRATION. INSTALL TEMPORARY ACOUSTICAL CEILING OVER WALLED AREAS.
- AREA OF WORK
- DEMO OF EXISTING TILE FLOOR AND INSTALLATION OF NEW RESINOUS FLOORING (RES-01).
- EXISTING CONCRETE COLUMN

KEYPLAN



Project Title NEW FLOORING CANTEN AND N#FS DISH ROOMS	Drawing Title CANTEN DISH ROOM; BASEMENT	Project Number N/A	
One inch or not to scale! Scale: NTS	Location Fayetteville, Arkansas	Building Number ONE (011)	
Checked ENG	Drawn CGS	Drawing Number AE101	
		Sheet 1 of 2	