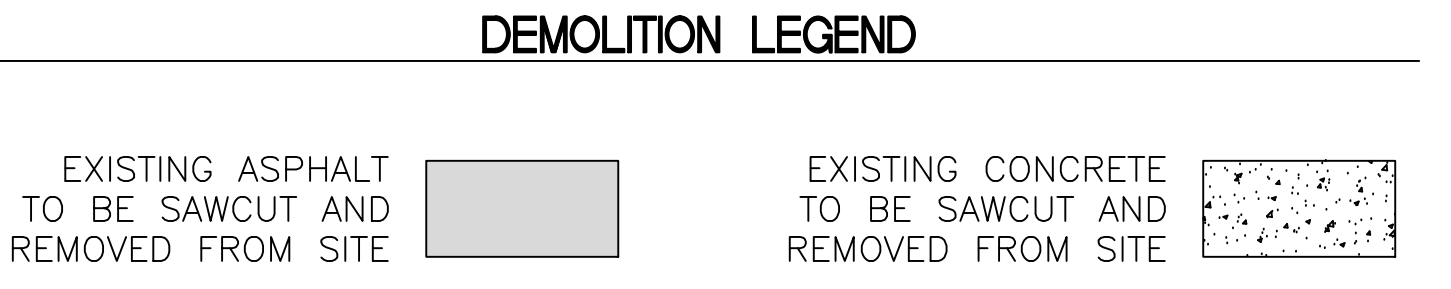
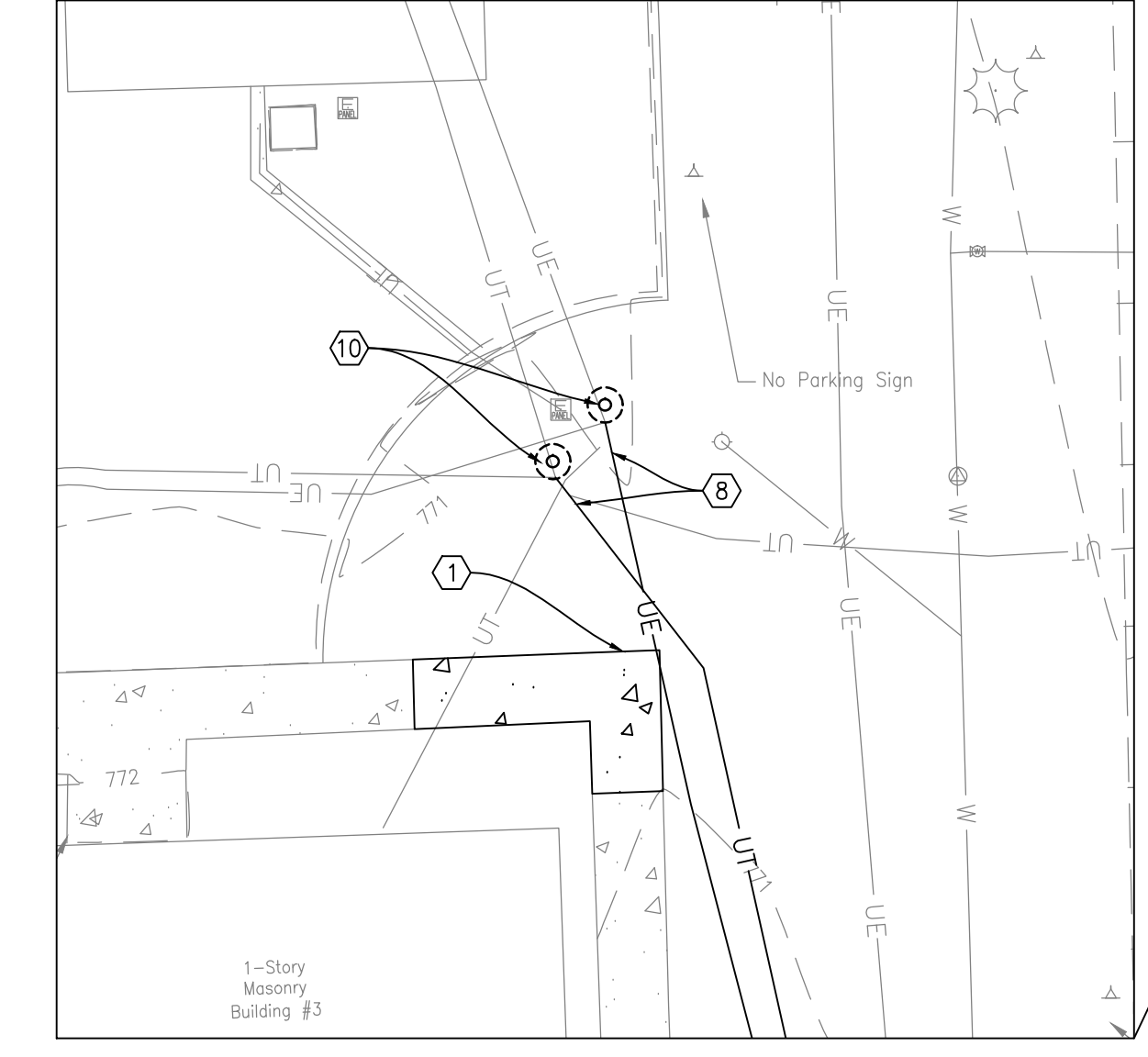


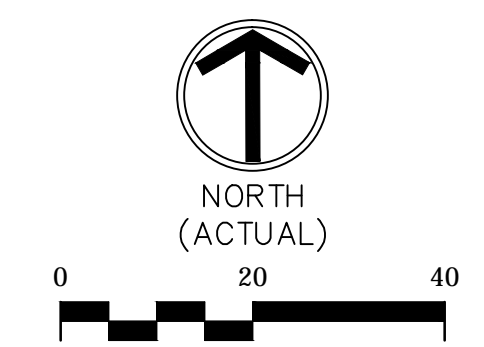
one eighth inch = one foot
 one quarter inch = one foot
 three eighths inch = one foot
 one half inch = one foot
 three quarters inch = one foot
 one inch = one foot
 one and one half inches = one foot
 three inches = one foot



- DEMOLITION KEYNOTES**
- SAWCUT & REMOVE CONCRETE SIDEWALKS
 - SAWCUT & REMOVE ASPHALT PAVEMENT
 - REMOVE CONCRETE STAIRCASE
 - REMOVE TREE AND ROOT BALL
 - SAWCUT & REMOVE CONCRETE CURB (NOT USED)
 - SAWCUT & REMOVE CONCRETE CURB AND GUTTER (NOT USED)
 - REMOVE EXISTING GARAGE (NOT USED)
 - AFTER ALL NEW ELECTRICAL WORK IS COMPLETED AND TESTED, CUT AND CAP CONDUIT 10' FROM BUILDING AND 5' FROM MANHOLE. REMOVE WIRING AND SEAL ALL OPENINGS ON BOTH SIDES.
 - LIGHT POLE, FIXTURE, AND BASE TO REMAIN. CONTRACTOR SHALL PROTECT DURING CONSTRUCTION. (NOT USED)
 - TUCK POINT AND SEAL EXISTING BRICK MANHOLE WITH GROUT.



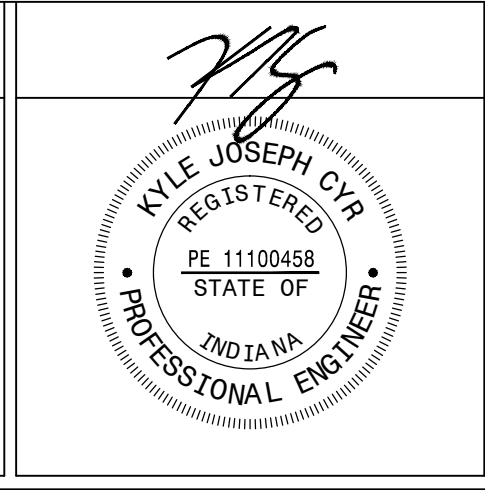
SCALE: 1" = 20'



100% CONSTRUCTION DOCUMENTS

| Revisions: | Date |
|------------|------|
| | |
| | |
| | |
| | |

CONSULTANTS:



ARCHITECT/ENGINEERS:

APOGEE
 Consulting Group, PA
 www.apogee-pa.com
 Apogee Project # 2014 121

Rateigh, NC
 Indianapolis, IN
 Philadelphia, PA
 Pittsburgh, PA
 Virginia Beach, VA
 Fort Collins, CO
 (815) 858-7420

Civil / Structural Engineer
GUIDON
 DESIGN
 805 N Capital Avenue, STE 10030
 Indianapolis, IN 46226
 Tel: (317) 830-6388

Drawing Title
DEMOLITION PLAN - SOUTH

Approved: Project Director

| | | |
|--|----------------|---|
| Project Title REPLACE MAIN ELECTRICAL TO OUT BUILDINGS | | Project Number 610A4-12-188 |
| Location FORT WAYNE, IN | | Building Numbers 1,3,5,6,7,10,T4,T5,T6 |
| Date 9/18/2015 | Checked KJC | Drawn CMB |
| Drawing Number CD101 | | Dwg. 5 of 48 |

Office of
Construction and Facilities Management

Department of
Veterans Affairs