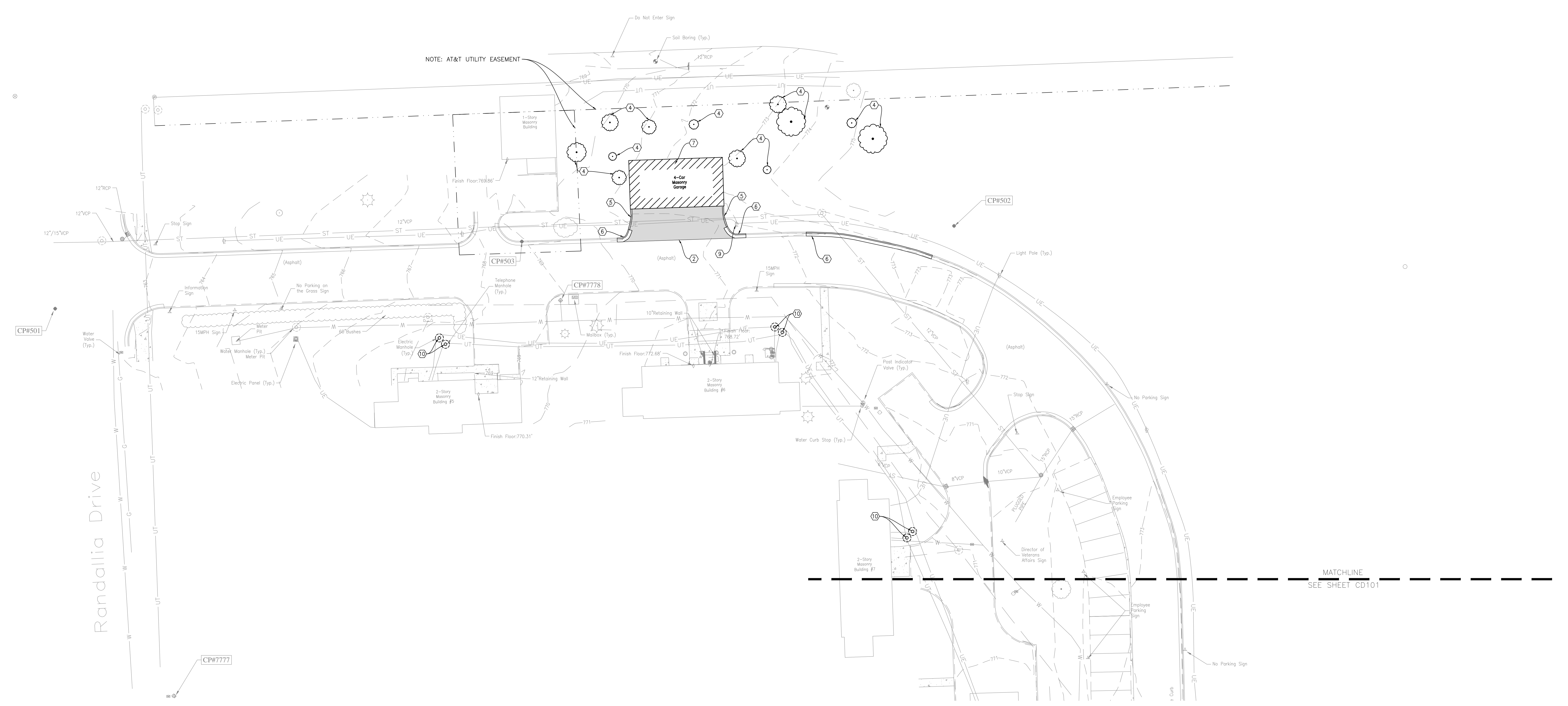


one eighth inch = one foot
 one quarter inch = one foot
 three eighths inch = one foot
 one half inch = one foot
 three quarters inch = one foot
 one inch = one foot
 one and one half inches = one foot
 three inches = one foot

0 1 2 3 4 5 6 7 8 9 10 11 12 13 14 15 16 17 18 19 20 21 22 23 24 25 26 27 28 29 30 31 32 33 34 35 36 37 38 39 40 41 42 43 44 45 46 47 48 49 50 51 52 53 54 55 56 57 58 59 60 61 62 63 64 65 66 67 68 69 70 71 72 73 74 75 76 77 78 79 80 81 82 83 84 85 86 87 88 89 90 91 92 93 94 95 96 97 98 99 100



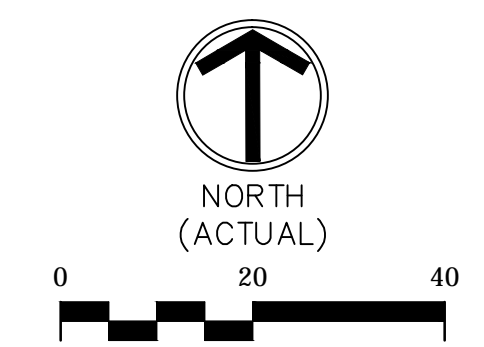
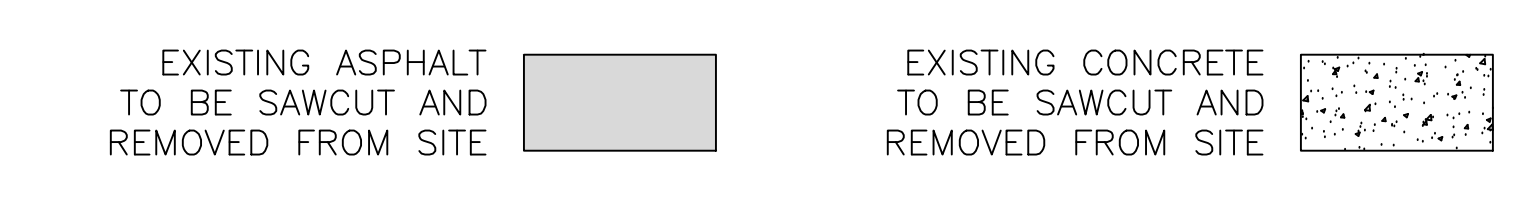
NOTE: AT&T UTILITY EASEMENT

MATCHLINE
SEE SHEET CD101

DEMOLITION KEYNOTES

1. SAWCUT & REMOVE CONCRETE SIDEWALK (NOT USED)
2. SAWCUT & REMOVE ASPHALT PAVEMENT
3. REMOVE CONCRETE STAIRCASE (NOT USED)
4. REMOVE TREE AND ROOT BALL
5. SAWCUT & REMOVE CONCRETE CURB
6. SAWCUT & REMOVE CONCRETE CURB AND GUTTER
7. REMOVE EXISTING GARAGE
8. AFTER ALL NEW ELECTRICAL WORK IS COMPLETED AND TESTED, CUT AND CAP CONDUIT 10" FROM BUILDING AND 5" FROM MANHOLE. REMOVE WIRING AND SEAL ALL OPENINGS ON BOTH SIDES. (NOT USED)
9. LIGHT POLE, FIXTURE, AND BASE TO REMAIN. CONTRACTOR SHALL PROTECT DURING CONSTRUCTION.
10. TUCK POINT AND SEAL EXISTING BRICK MANHOLE WITH GROUT.

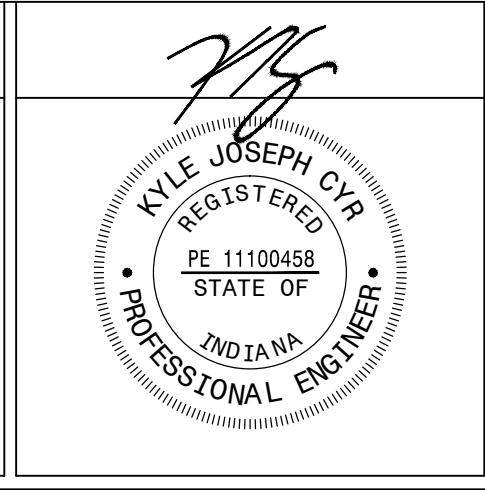
DEMOLITION LEGEND



100% CONSTRUCTION DOCUMENTS

Revisions:	Date

CONSULTANTS:



ARCHITECT/ENGINEERS:

APOGEE DESIGN

Raleigh, NC
 Indianapolis, IN
 Philadelphia, PA
 Pittsburgh, PA
 Virginia Beach, VA
 Fort Collins, CO

805 N. Capitol Avenue, STE. 10030
 Indianapolis, IN 46203
 Tel: (317) 930-6388

Drawing Title
 DEMOLITION PLAN - NORTH

Approved: Project Director

Project Title REPLACE MAIN ELECTRICAL TO OUT BUILDINGS		Project Number 610A4-12-188
Location FORT WAYNE, IN		Building Numbers 1,3,5,6,7,10,T4,T5,T6
Date 9/18/2015	Checked KJC	Drawn CMB
Drawing Number CD102		Dwg. 6 of 48

Office of Construction and Facilities Management

Department of Veterans Affairs