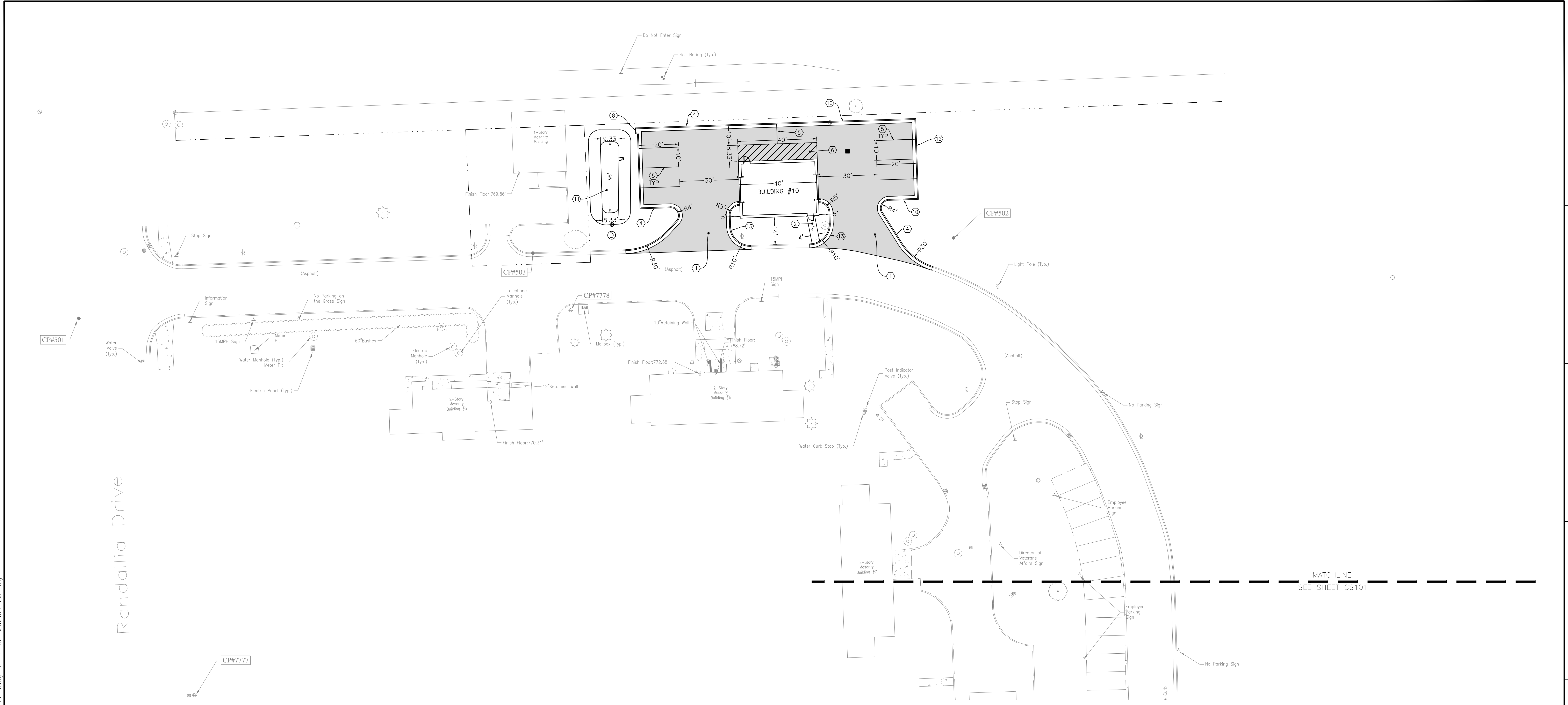


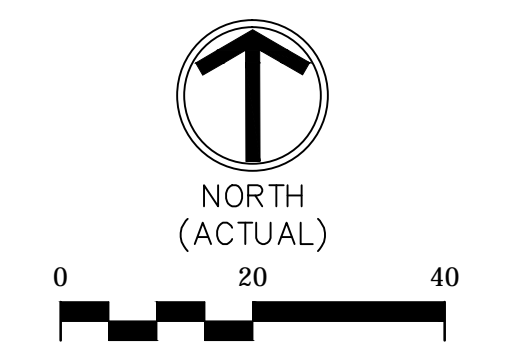
one eighth inch = one foot  
 one quarter inch = one foot  
 three eighths inch = one foot  
 one half inch = one foot  
 three quarters inch = one foot  
 one inch = one foot  
 one and one half inches = one foot  
 three inches = one foot



**SITE KEYNOTES**

1. ASPHALT PAVEMENT (CS3)
2. CONCRETE SIDEWALK (CS2)
3. CONCRETE CURB (CS1)
4. CONCRETE CURB AND GUTTER, STANDARD (CS4)
5. PARKING STALL STRIPING, PAINTED, WHITE, 4" WIDE (CS6)
6. DIAGONAL STRIPING, PAINTED, WHITE, 4" WIDE, 36" O.C.
7. CONCRETE STAIRCASE (SEE ARCHITECTURAL PLANS) (NOT USED)
8. CURB TURNOUT (CS7)
9. TRANSFORMER PAD (NOT USED)
10. TRANSITION CURB FROM 6" REVEAL TO 18" REVEAL. SEE CG102 FOR ELEVATIONS AND CS501 FOR DETAIL.
11. STORMWATER RETENTION AREA (CS5)
12. CONCRETE CURB AND GUTTER, 18" REVEAL (CS4)
13. CONCRETE CURB AND GUTTER, REVERSE (CS4)

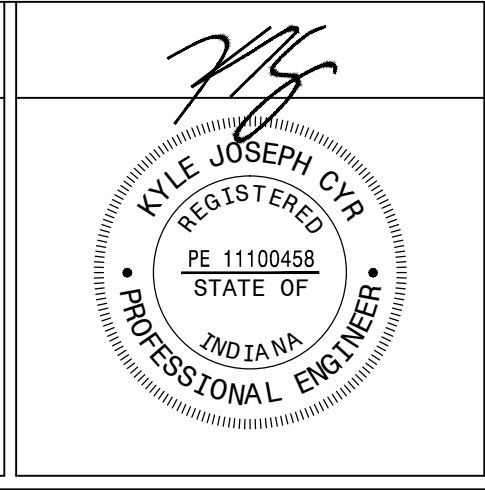
**SITE LEGEND**



100% CONSTRUCTION DOCUMENTS

Revisions:	Date

**CONSULTANTS:**



**ARCHITECT/ENGINEERS:**

**APOGEE**  
 Consulting Group, PA  
 Raleigh, NC  
 Indianapolis, IN  
 Philadelphia, PA  
 Pittsburgh, PA  
 Virginia Beach, VA  
 Fort Collins, CO  
 (819) 859-7420  
 www.apogee-pa.com  
 Apogee Project # 2014 121

Civil / Structural Engineer  
**GUIDON**  
 DESIGN  
 805 N. Capitol Avenue, STE 10030  
 Indianapolis, IN 46205  
 Tel: (317) 930-6388

**Drawing Title**  
 SITE PLAN - NORTH

**Approved:** Project Director

**Project Title**  
 REPLACE MAIN ELECTRICAL TO OUT BUILDINGS

**Location**  
 FORT WAYNE, IN

**Date**  
 9/18/2015

**Checked**  
 KJC

**Drawn**  
 CMB

**Project Number**  
 610A4-12-188

**Building Numbers**  
 1,3,5,6,7,10,T4,T5,T6

**Drawing Number**  
**CS102**  
 Dwg. 8 of 48

**Office of Construction and Facilities Management**

Department of Veterans Affairs