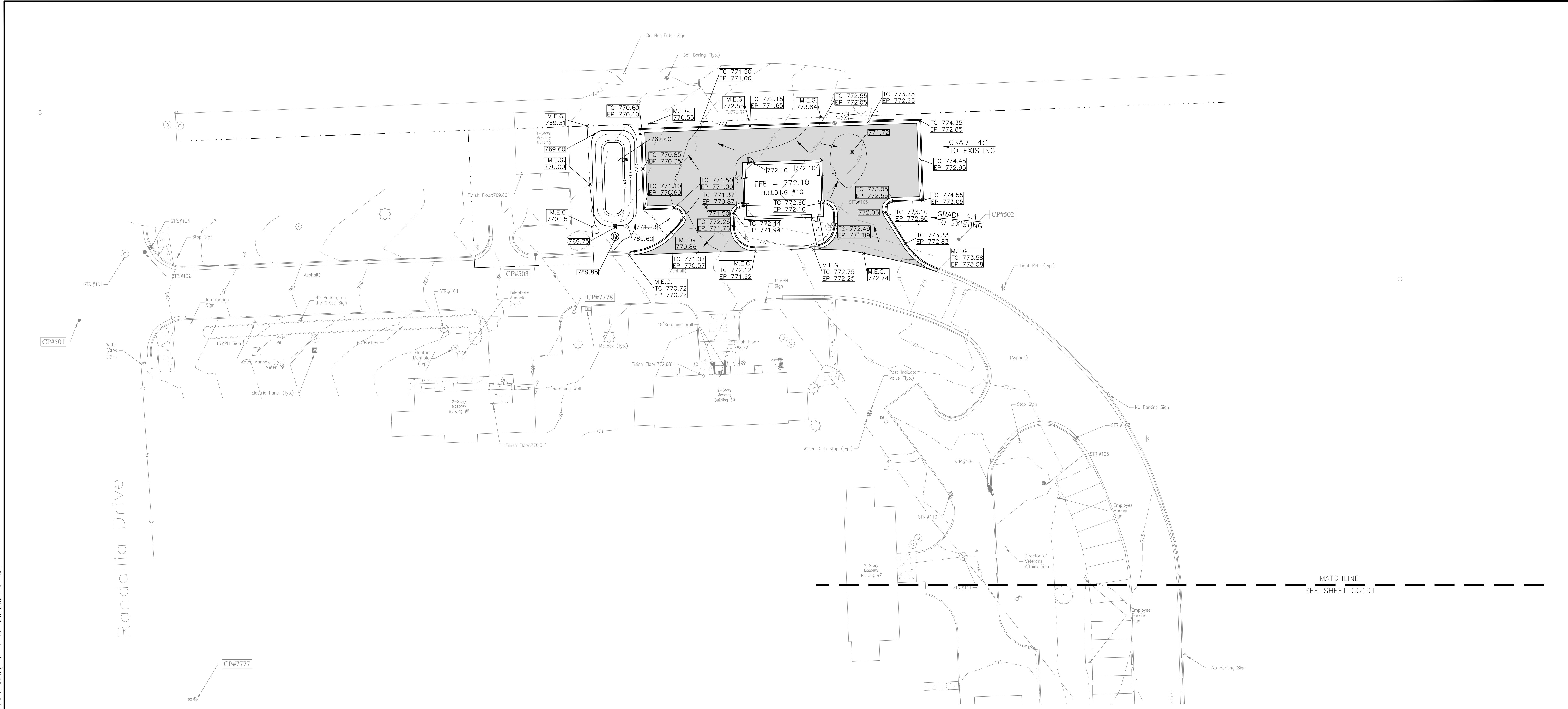


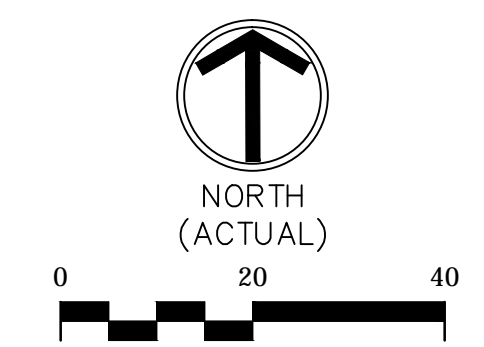
three inches = one foot
 one and one half inches = one foot
 one inch = one foot
 three quarters inch = one foot
 one half inch = one foot
 three eighths inch = one foot
 one quarter inch = one foot
 one eighth inch = one foot
 one sixteenth inch = one foot



Randallia Drive

GRADING PLAN LEGEND

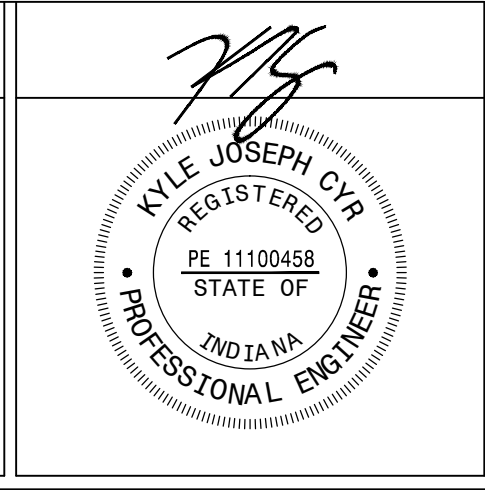
- DRAINAGE DIRECTION FLOW
- MATCH EXISTING GRADE
- SPOT ELEVATION
- TOP OF WALL
- TOP OF CURB
- EDGE OF PAVEMENT
- EXISTING MINOR CONTOUR
- EXISTING MAJOR CONTOUR
- PROPOSED MINOR CONTOUR
- PROPOSED MAJOR CONTOUR



100% CONSTRUCTION DOCUMENTS

Revisions:	Date

CONSULTANTS:



ARCHITECT/ENGINEERS:

APOGEE
 Consulting Group, PA
 Raleigh, NC
 Indianapolis, IN
 Philadelphia, PA
 Pittsburgh, PA
 Virginia Beach, VA
 Fort Collins, CO
 www.apogee.com
 Apogee Project # 2014 121

Civil / Structural Engineer
GUIDON DESIGN
 805 N Capital Avenue, STE 10030
 Indianapolis, IN 46205
 Tel: (317) 830-6388

Drawing Title
GRADING PLAN - NORTH

Approved: Project Director

Project Title
REPLACE MAIN ELECTRICAL TO OUT BUILDINGS

Location
FORT WAYNE, IN

Date
 9/18/2015

Checked
 KJC

Drawn
 CMB

Project Number
 610A4-12-188

Building Numbers
 1,3,5,6,7,10,T4,T5,T6

Drawing Number
CG102
 Dwg. 11 of 48

Office of
Construction and Facilities Management

Department of
Veterans Affairs