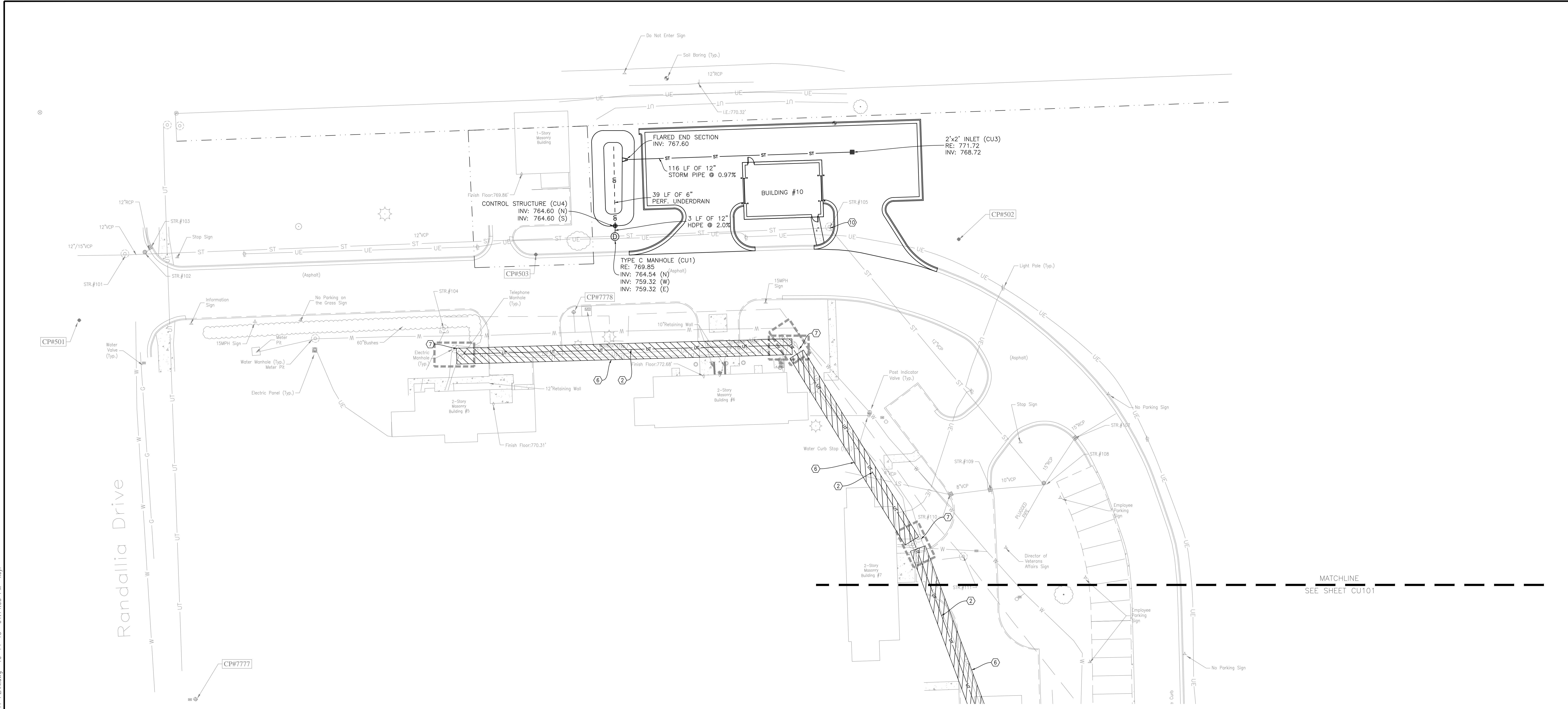


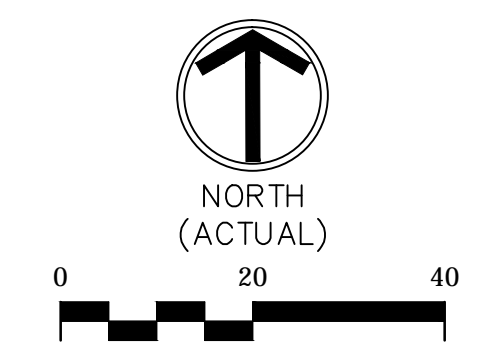
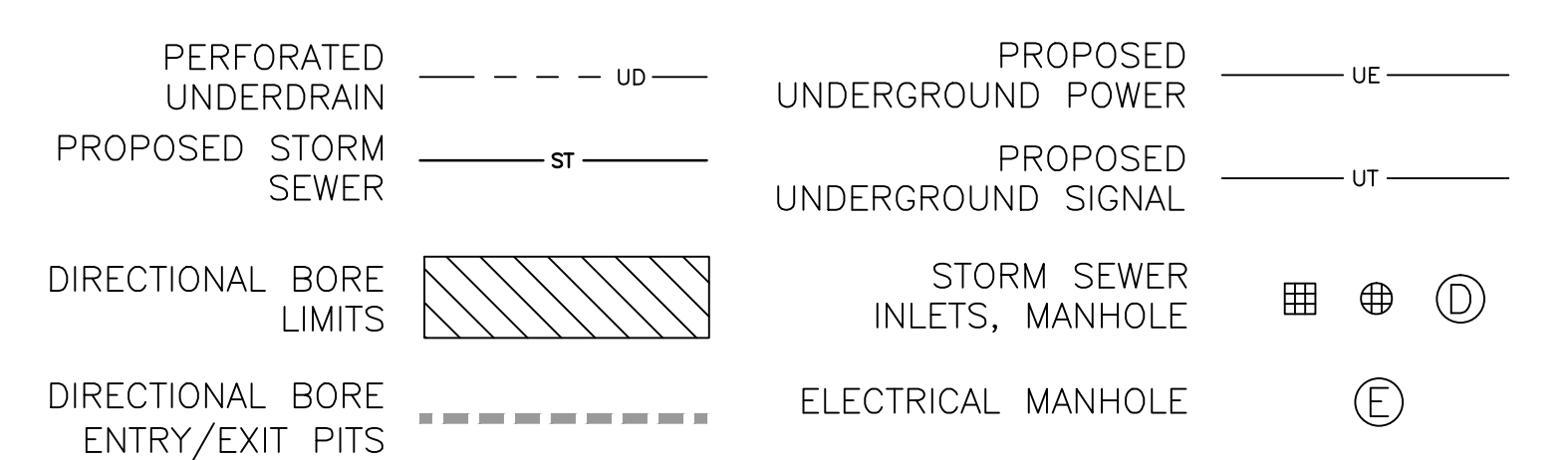
one eighth inch = one foot
 one quarter inch = one foot
 three eighths inch = one foot
 one half inch = one foot
 three quarters inch = one foot
 one inch = one foot
 one and one half inches = one foot
 two inches = one foot
 three inches = one foot
 four inches = one foot
 five inches = one foot
 six inches = one foot
 seven inches = one foot
 eight inches = one foot
 nine inches = one foot
 ten inches = one foot
 eleven inches = one foot
 twelve inches = one foot



UTILITY KEYNOTES

1. NEW POWER CONDUIT (SEE ES102 FOR DETAIL) (NOT USED)
2. NEW SIGNAL CONDUIT (SEE ES102 FOR DETAIL)
3. NEW POWER MANHOLE (SEE ES102 FOR DETAIL) (NOT USED)
4. NEW SIGNAL MANHOLE (SEE ES102 FOR DETAIL) (NOT USED)
5. UTILIZE EXISTING UNDERGROUND CONDUIT FOR PROPOSED WIRING (SEE ES101 AND PP101 FOR MORE INFORMATION) (NOT USED)
6. DIRECTIONAL BORE NEW SIGNAL CONDUIT
7. CONNECT CONDUIT TO EXISTING MANHOLE (SEE ES102)
8. EXISTING CONDUIT TO BE CAPPED AFTER COMPLETION OF NEW ELECTRICAL WORK. (SEE CD101) (NOT USED)
9. TRANSFORMER (SEE E-103) (NOT USED)
10. ADJUST CASTING TO GRADE

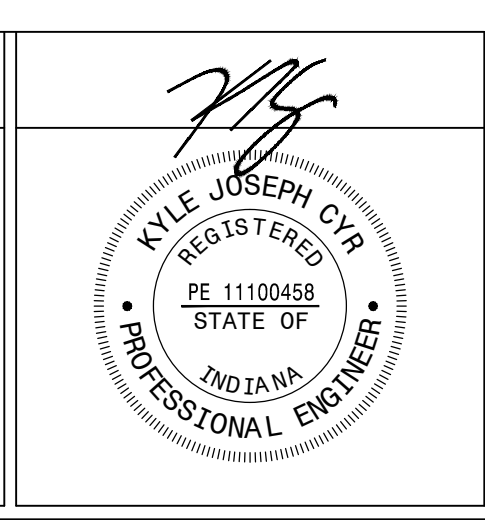
SITE UTILITY LEGEND



100% CONSTRUCTION DOCUMENTS

Revisions:	Date

CONSULTANTS:



ARCHITECT/ENGINEERS:

APOGEE
 Consulting Group, PA
 www.apogee-pa.com
 Apogee Project # 2014 121

Raleigh, NC
 Indianapolis, IN
 Philadelphia, PA
 Pittsburgh, PA
 Virginia Beach, VA
 Fort Collins, CO
 (819) 859-7420

Civil / Structural Engineer
GUIDON
 DESIGN
 805 N Capital Avenue, STE 10030
 Indianapolis, IN 46203
 Tel: (317) 930-6388

Drawing Title
UTILITY PLAN - NORTH

Approved: Project Director

Project Title
REPLACE MAIN ELECTRICAL TO OUT BUILDINGS

Location
FORT WAYNE, IN

Date
 9/18/2015

Checked
 KJC

Drawn
 CMB

Project Number
 610A4-12-188

Building Numbers
 1,3,5,6,7,10,T4,T5,T6

Drawing Number
CU102
 Dwg. 13 of 48

Office of
Construction and Facilities Management

Department of
Veterans Affairs