

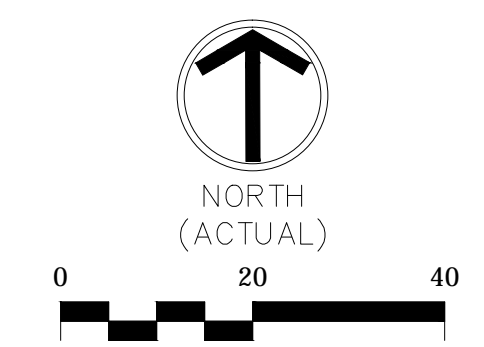
Scale: one inch = one foot, three inches = one foot, one and one half inches = one foot, one inch = one foot, three quarters inch = one foot, one half inch = one foot, three eighths inch = one foot, one quarter inch = one foot, one eighth inch = one foot, one sixteenth inch = one foot. Project: 610A4-12-188 - VA Northern Indiana - Replace Electrical - Apogee. Drawings: 1-2, Current Drawings; 3-3, Civil; 15-1, 1001 - C-EROSION CONTROL PLAN.dwg; 9-17-15 04:21:00 PM kcyr

EROSION CONTROL KEYNOTES

1. INLET PROTECTION (CJ5, CJ6)
2. TEMPORARY SILT BARRIER (CJ3)
3. PERMANENT SEEDING (CJ4)
4. CONCRETE WASHOUT AREA (CJ1)
5. EROSION CONTROL BLANKET (CJ2)
6. CONSTRUCTION STAGING AREA

EROSION CONTROL PLAN LEGEND

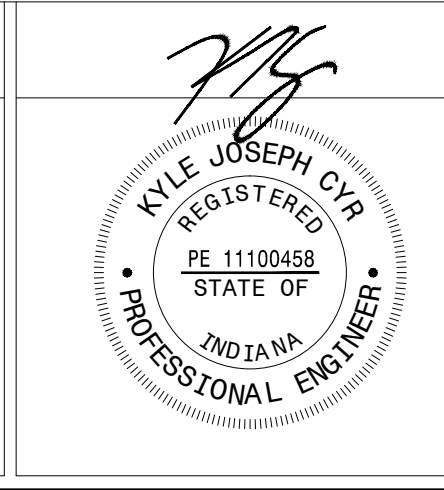
PERMANENT SEEDING		TEMPORARY SILT BARRIER	
CONSTRUCTION STAGING AREA		INLET PROTECTION	
EROSION CONTROL BLANKET		CONCRETE WASHOUT AREA	



100% CONSTRUCTION DOCUMENTS

Revisions:	Date

CONSULTANTS:



ARCHITECT/ENGINEERS:

APOGEE CONSULTING GROUP, PA
 Raleigh, NC
 Indianapolis, IN
 Philadelphia, PA
 Pittsburgh, PA
 Virginia Beach, VA
 Fort Collins, CO
 (819) 859-7420
 www.apogee-pa.com
 Apogee Project # 2014 121

GUIDON DESIGN
 Civil / Structural Engineer
 805 N Capital Avenue, STE 10030
 Indianapolis, IN 46226
 Tel: (317) 930-6388

Drawing Title
 EROSION CONTROL PLAN - NORTH

Approved: Project Director

Project Title
 REPLACE MAIN ELECTRICAL TO OUT BUILDINGS

Location
 FORT WAYNE, IN

Date
 9/18/2015

Checked
 KJC

Drawn
 CMB

Project Number
 610A4-12-188

Building Numbers
 1,3,5,6,7,10,T4,T5,T6

Drawing Number
CJ102
 Dwg. 16 of 48

