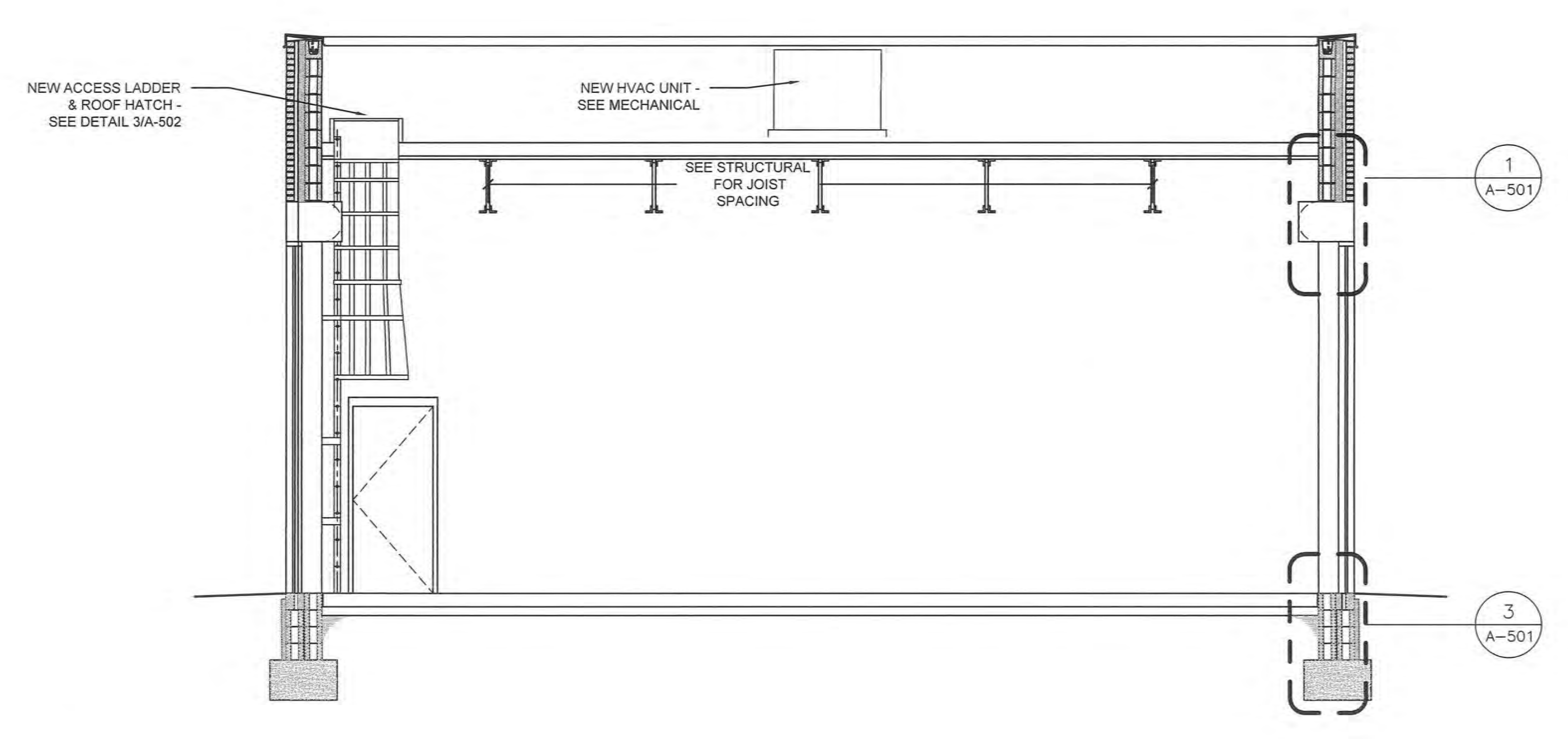
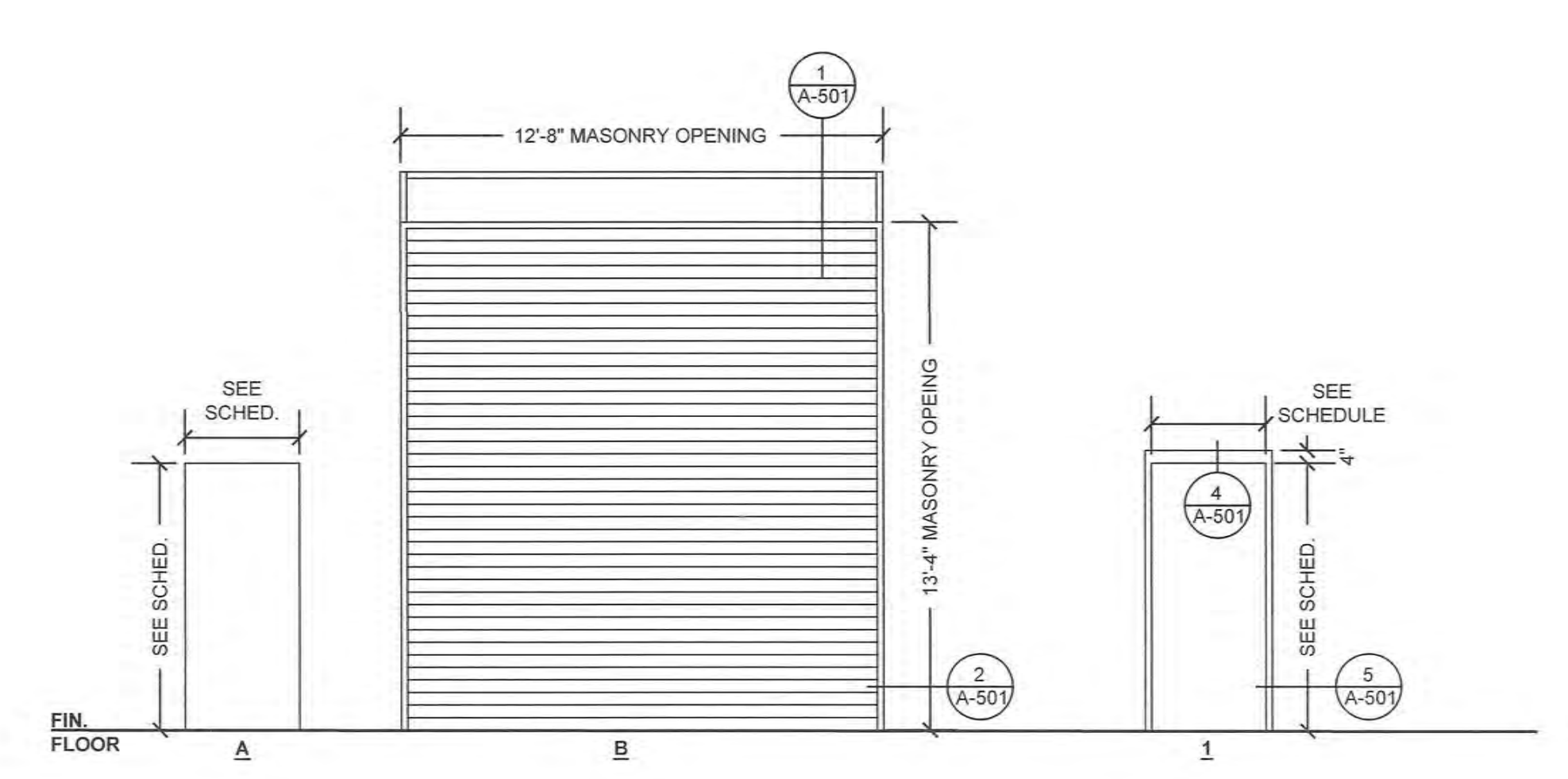


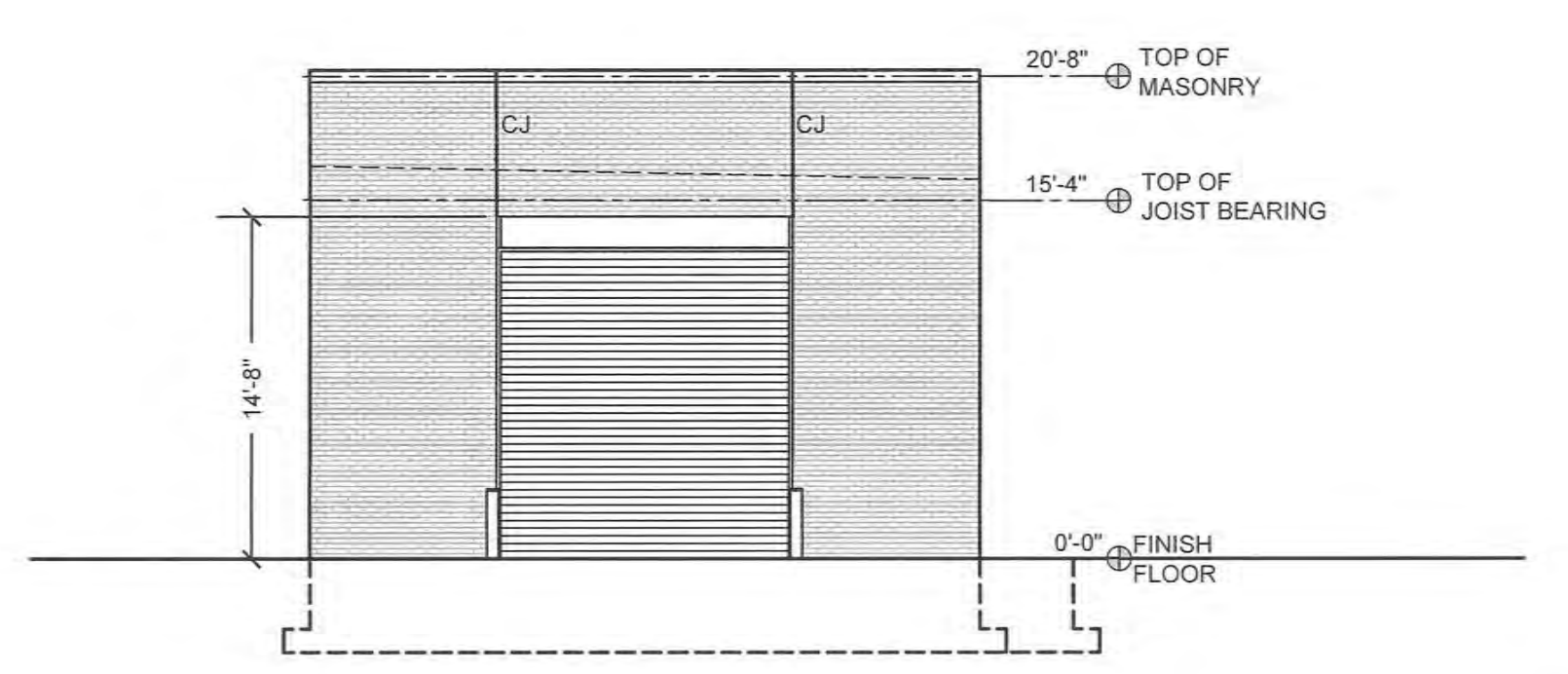
7 INTERIOR SECTION / ELEVATION
1/4" = 1'-0"



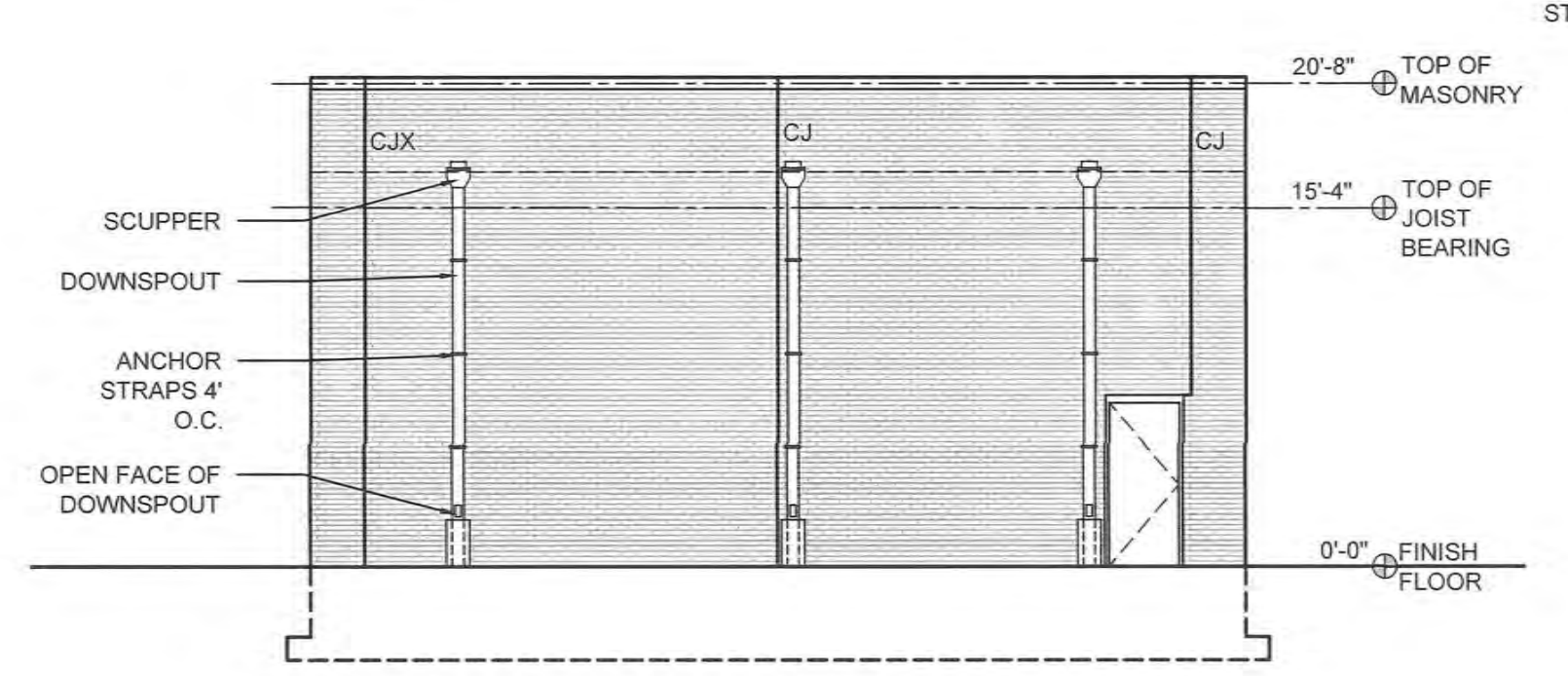
8 INTERIOR SECTION / ELEVATION
1/4" = 1'-0"



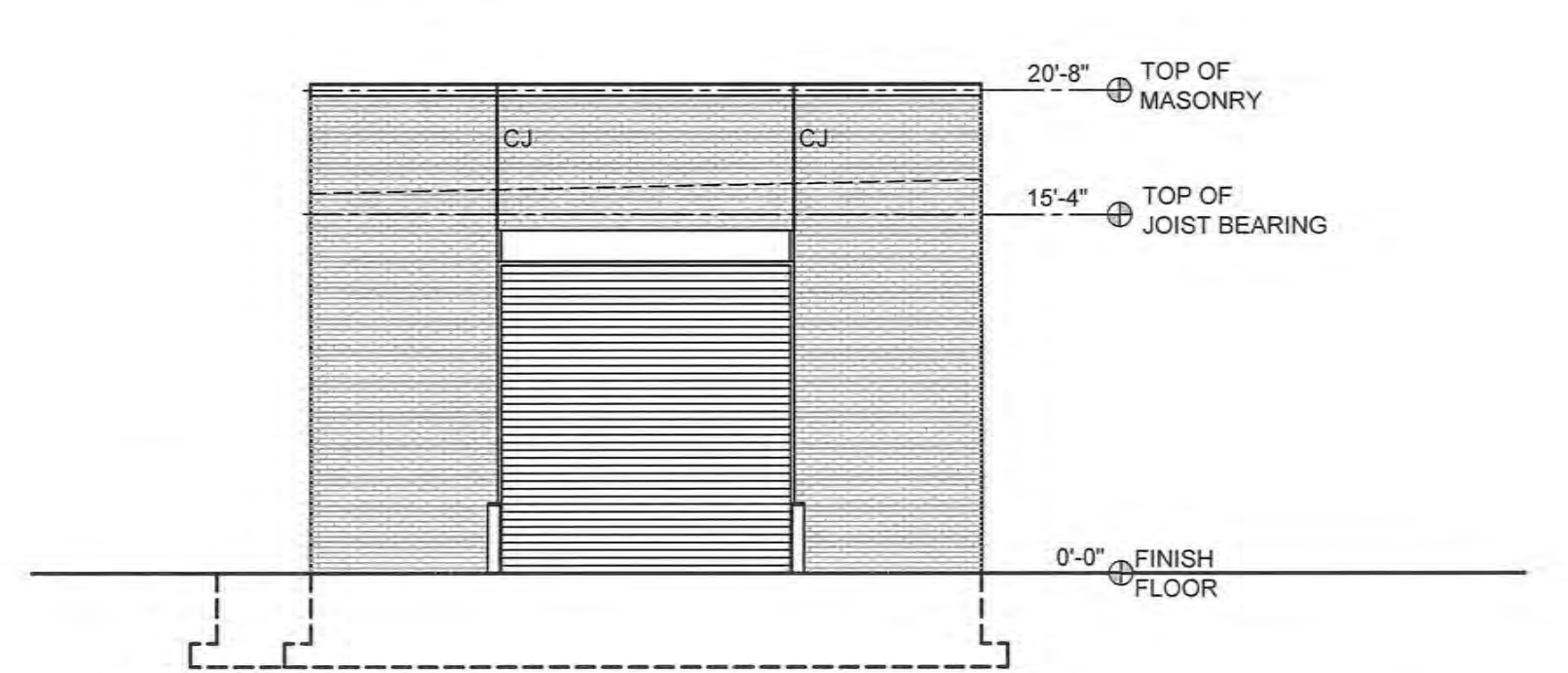
9 DOOR AND FRAME TYPES
1/4" = 1'-0"



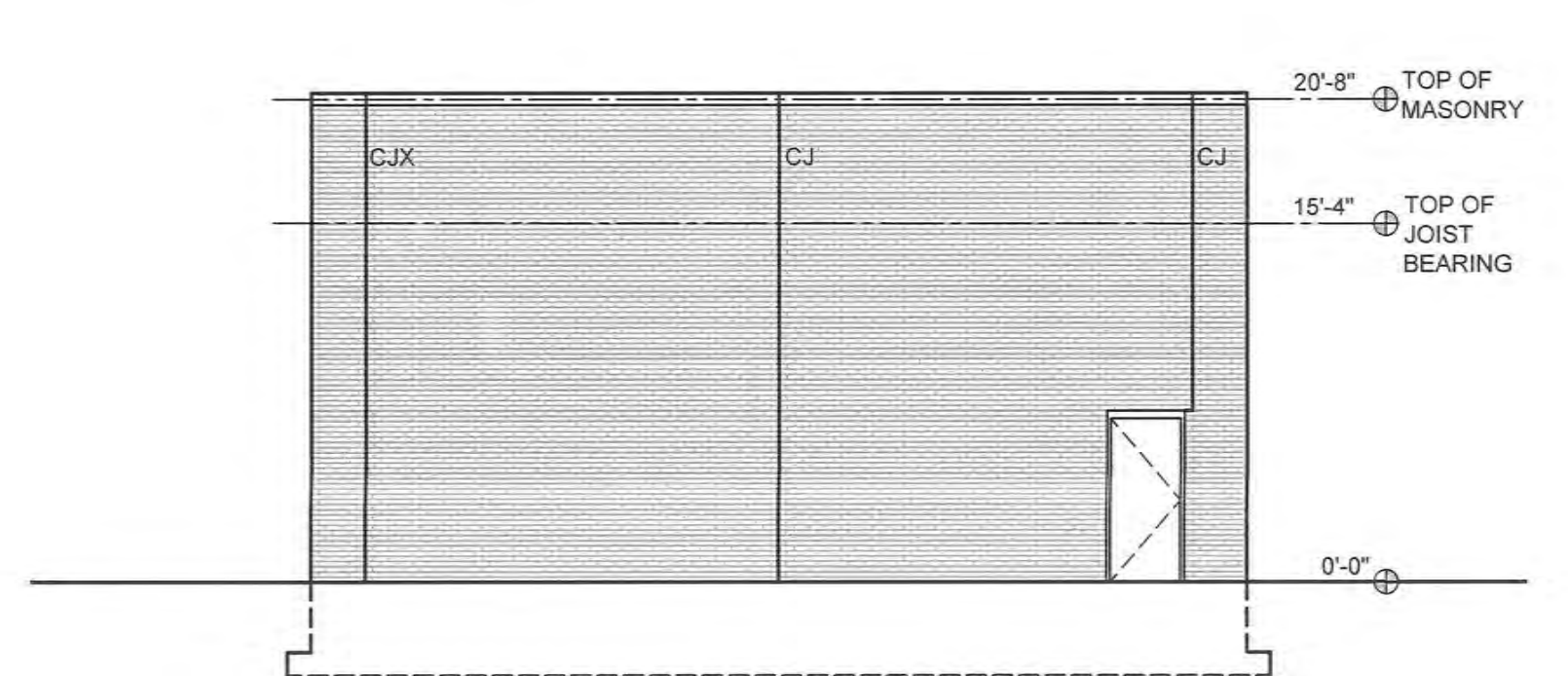
3 EXTERIOR ELEVATION EAST
1/8" = 1'-0"



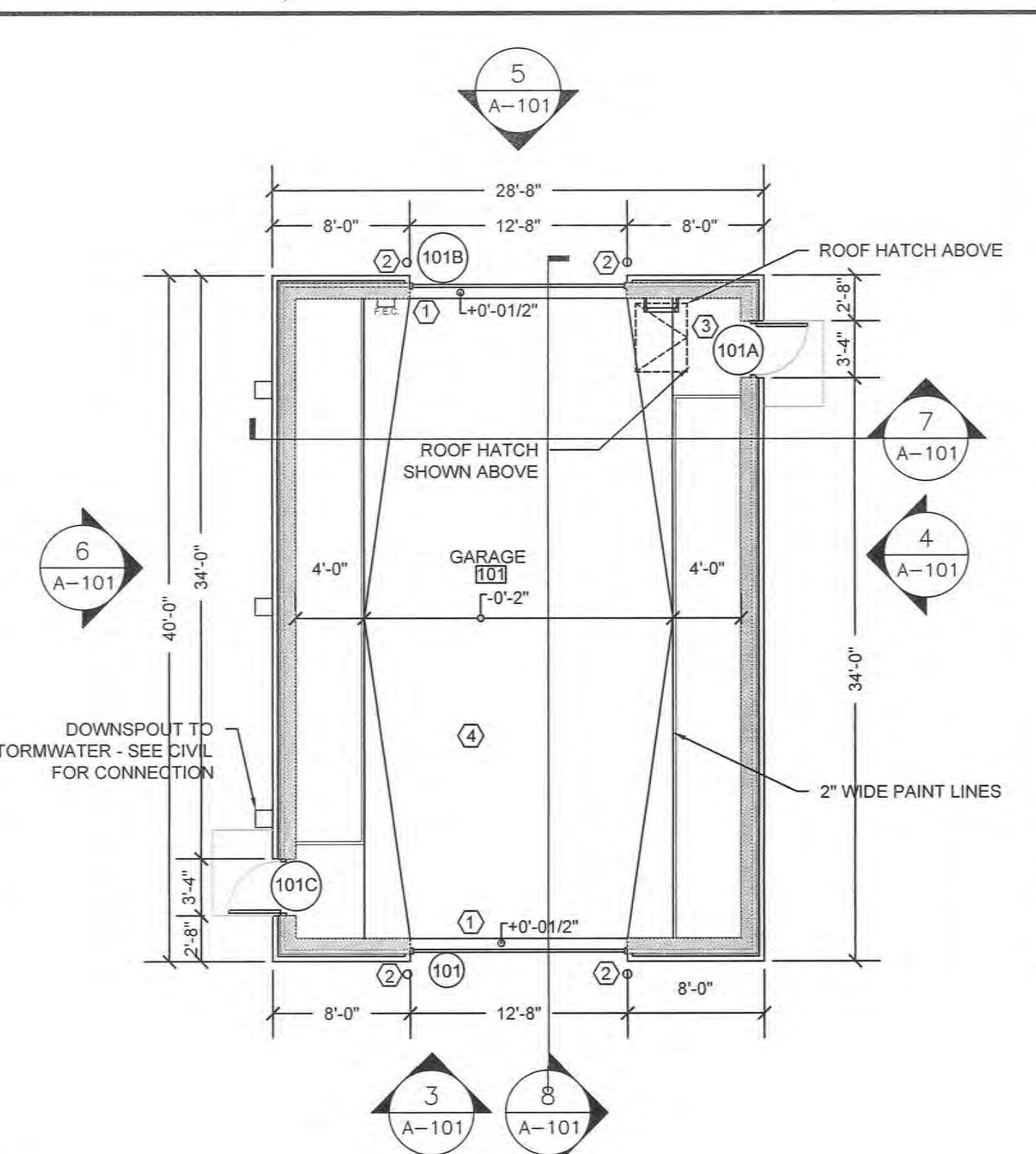
4 EXTERIOR ELEVATION NORTH
1/8" = 1'-0"



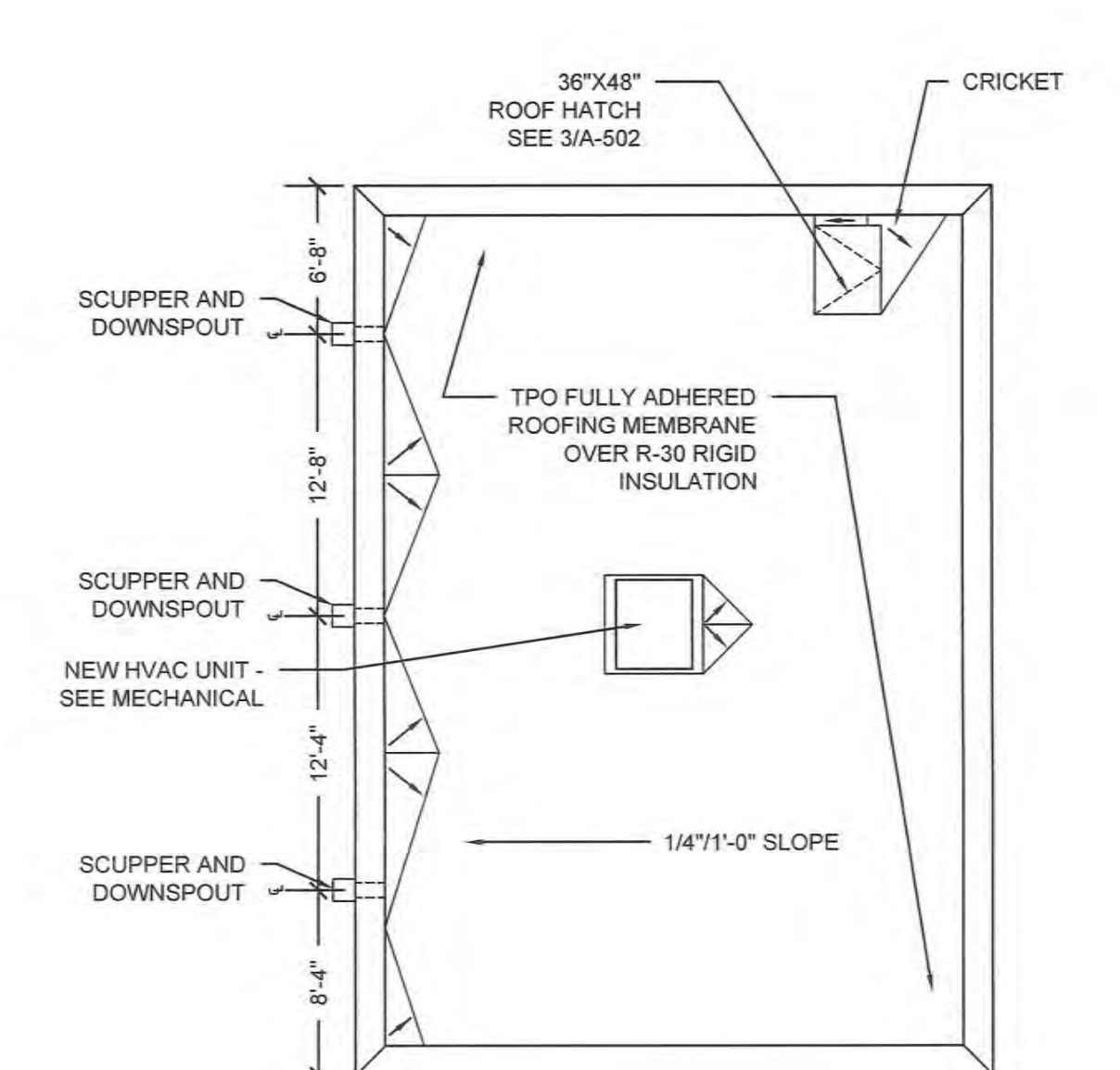
5 EXTERIOR ELEVATION WEST
1/8" = 1'-0"



6 EXTERIOR ELEVATION SOUTH
1/8" = 1'-0"



1 ARCHITECTURAL FLOOR PLAN
1/8" = 1'-0"



2 ARCHITECTURAL ROOF PLAN
1/8" = 1'-0"

GENERAL NOTES

- BRING TO COR'S AND ARCHITECT'S IMMEDIATE ATTENTION ANY DISCREPANCIES.
- COORDINATE WORK OF THIS TRADE WITH OTHER TRADES.
- ANY DIMENSIONS NOT SHOWN OR DEEMED QUESTIONABLE ARE TO BE VERIFIED BY ARCHITECT/DESIGNER. DO NOT SCALE DRAWINGS.
- PENETRATIONS SHALL BE FIRE STOPPED WITH VA APPROVED BRAND FIRE BARRIER PRODUCTS AS REQUIRED TO MAINTAIN FIRE RATINGS AND COMPLY WITH THE BUILDING CODE AND NEFA MANUFACTURER'S INSTRUCTIONS FOR THEIR USE. CONTRACTOR MAY USE OTHER UL LISTED FIRE STOP MATERIALS WHEN APPROVED IN WRITING BY THE ARCHITECT, FIRE MARSHAL AND VA COR.
- CAULK AT JUNCTURE OF INTERIOR FACES OF DOOR FRAMES WITH ADJACENT MATERIALS EVEN THOUGH JOINT MAY NOT BE VISIBLE.
- WHERE PROVIDING NEW SLAB ON GRADE, PROVIDE AGGREGATE SUB-BASE OF MATERIAL AND THICKNESS AS REQUIRED BY STRUCTURAL ENGINEER.

PLAN KEY NOTES

- PROVIDE EACH OVERHEAD COILING DOOR WITH ELECTRIC PUSH BUTTON OPERATION.
- PROVIDE BOLLARDS WITH PLASTIC COVERS AT EACH OVERHEAD COILING DOOR JAMB. SEE DETAIL 10/A-501.
- NEW ACCESS LADDER - SEE DETAIL 3/A-502
- PROVIDE TRAFFIC SEALANT AT CONCRETE CONTROL JOINTS.

REFERENCE LEGEND

- SCALE: N.T.S.
- NEW WALL
 - ROOM TAG
 - REVISION TAG
 - KEYNOTE TAG
 - SECTION TAG
 - DETAIL TAG
 - NEW DOOR
 - DOOR TAG
 - EXTERIOR ELEVATION TAG

DOOR		FRAME										REMARKS					
DOOR NO.	TYPE	SIZE			MATL.	GL.	LVR. OR U.C.	TYPE	FINISH	MAT'L	HEAD DETAIL	JAMB DETAIL	SILL DETAIL	GLAZING	THRES.	HDV SET	
		W.	H.	THK.													
101	B	12'-8" M.O.	13'-4" M.O.	1-1/2"	HM	-	-	B	PT	HM	1/A501	2/A501	3/A501	-	-	HW-E5	-
101A	A	3'-0"	7'-0"	1-1/2"	HM	-	-	1	PT	HM	4/A501	5/A501	6/A501	-	-	HW-E3	-
101B	B	12'-8" M.O.	13'-4" M.O.	1-1/2"	HM	-	-	B	PT	HM	1/A501	2/A501	3/A501	-	-	HW-E5	-
101C	A	3'-0"	7'-0"	1-1/2"	HM	-	-	1	PT	HM	4/A501	5/A501	6/A501	-	-	HW-E3	-

100% CONSTRUCTION DOCUMENTS

CONSULTANTS: 		ARCHITECT/ENGINEERS: Raleigh, NC Indianapolis, IN Philadelphia, PA Pittsburgh, PA Virginia Beach, VA Fort Collins, CO (818) 555-7400 www.apogee.com Apogee Project # 2014 121		Drawing Title BUILDING 10 ARCHITECTURAL FLOOR PLANS, SECTIONS + ELEV, SCHEDULES		Project Title REPLACE MAIN ELECTRICAL TO OUT-BUILDINGS		Project Number 610A4-12-188		Office of Construction and Facilities Management Department of Veterans Affairs	
Revisions: _____ Date _____				Approved: Project Director 		Location FORT WAYNE, IN		Building Numbers 1,3,5,6,7,10,T4,T5,T6		Drawing Number A-101 Dwg. 21 of 48	
		Date 9/18/2015		Checked KMN		Drawn MEG		Project Number 610A4-12-188		Building Numbers 1,3,5,6,7,10,T4,T5,T6	

one eighth inch = one foot
one quarter inch = one foot
one half inch = one foot
three eighths inch = one foot
one inch = one foot
one and one half inches = one foot
two inches = one foot
three inches = one foot
four inches = one foot
five inches = one foot
six inches = one foot
seven inches = one foot
eight inches = one foot
nine inches = one foot
ten inches = one foot
eleven inches = one foot
twelve inches = one foot
thirteen inches = one foot
fourteen inches = one foot
fifteen inches = one foot
sixteen inches = one foot
seventeen inches = one foot
eighteen inches = one foot
nineteen inches = one foot
twenty inches = one foot
twenty one inches = one foot
twenty two inches = one foot
twenty three inches = one foot
twenty four inches = one foot
twenty five inches = one foot
twenty six inches = one foot
twenty seven inches = one foot
twenty eight inches = one foot
twenty nine inches = one foot
thirty inches = one foot
thirty one inches = one foot
thirty two inches = one foot
thirty three inches = one foot
thirty four inches = one foot
thirty five inches = one foot
thirty six inches = one foot
thirty seven inches = one foot
thirty eight inches = one foot
thirty nine inches = one foot
forty inches = one foot
forty one inches = one foot
forty two inches = one foot
forty three inches = one foot
forty four inches = one foot
forty five inches = one foot
forty six inches = one foot
forty seven inches = one foot
forty eight inches = one foot
forty nine inches = one foot
fifty inches = one foot
fifty one inches = one foot
fifty two inches = one foot
fifty three inches = one foot
fifty four inches = one foot
fifty five inches = one foot
fifty six inches = one foot
fifty seven inches = one foot
fifty eight inches = one foot
fifty nine inches = one foot
sixty inches = one foot
sixty one inches = one foot
sixty two inches = one foot
sixty three inches = one foot
sixty four inches = one foot
sixty five inches = one foot
sixty six inches = one foot
sixty seven inches = one foot
sixty eight inches = one foot
sixty nine inches = one foot
seventy inches = one foot
seventy one inches = one foot
seventy two inches = one foot
seventy three inches = one foot
seventy four inches = one foot
seventy five inches = one foot
seventy six inches = one foot
seventy seven inches = one foot
seventy eight inches = one foot
seventy nine inches = one foot
eighty inches = one foot
eighty one inches = one foot
eighty two inches = one foot
eighty three inches = one foot
eighty four inches = one foot
eighty five inches = one foot
eighty six inches = one foot
eighty seven inches = one foot
eighty eight inches = one foot
eighty nine inches = one foot
ninety inches = one foot
ninety one inches = one foot
ninety two inches = one foot
ninety three inches = one foot
ninety four inches = one foot
ninety five inches = one foot
ninety six inches = one foot
ninety seven inches = one foot
ninety eight inches = one foot
ninety nine inches = one foot
one hundred inches = one foot