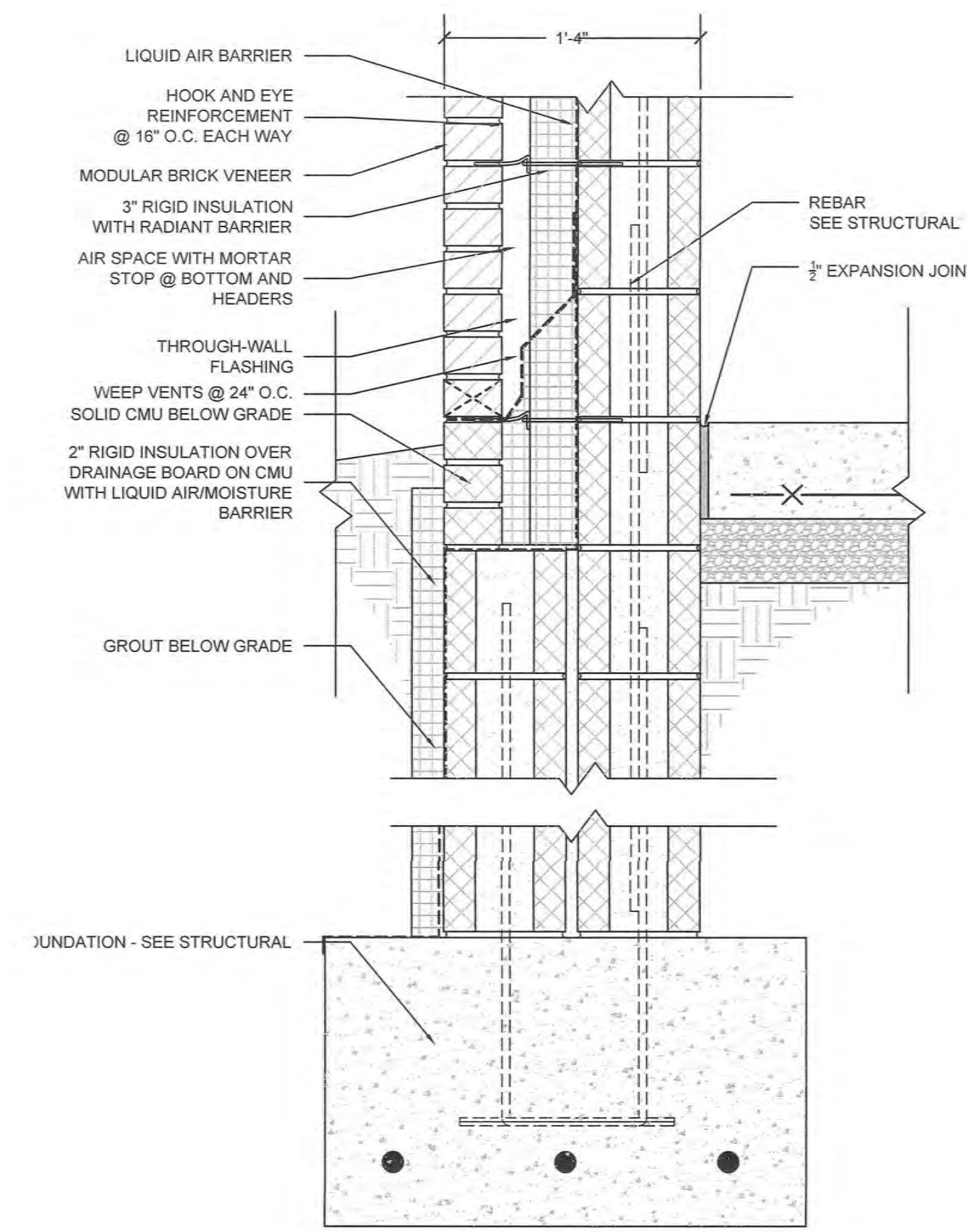
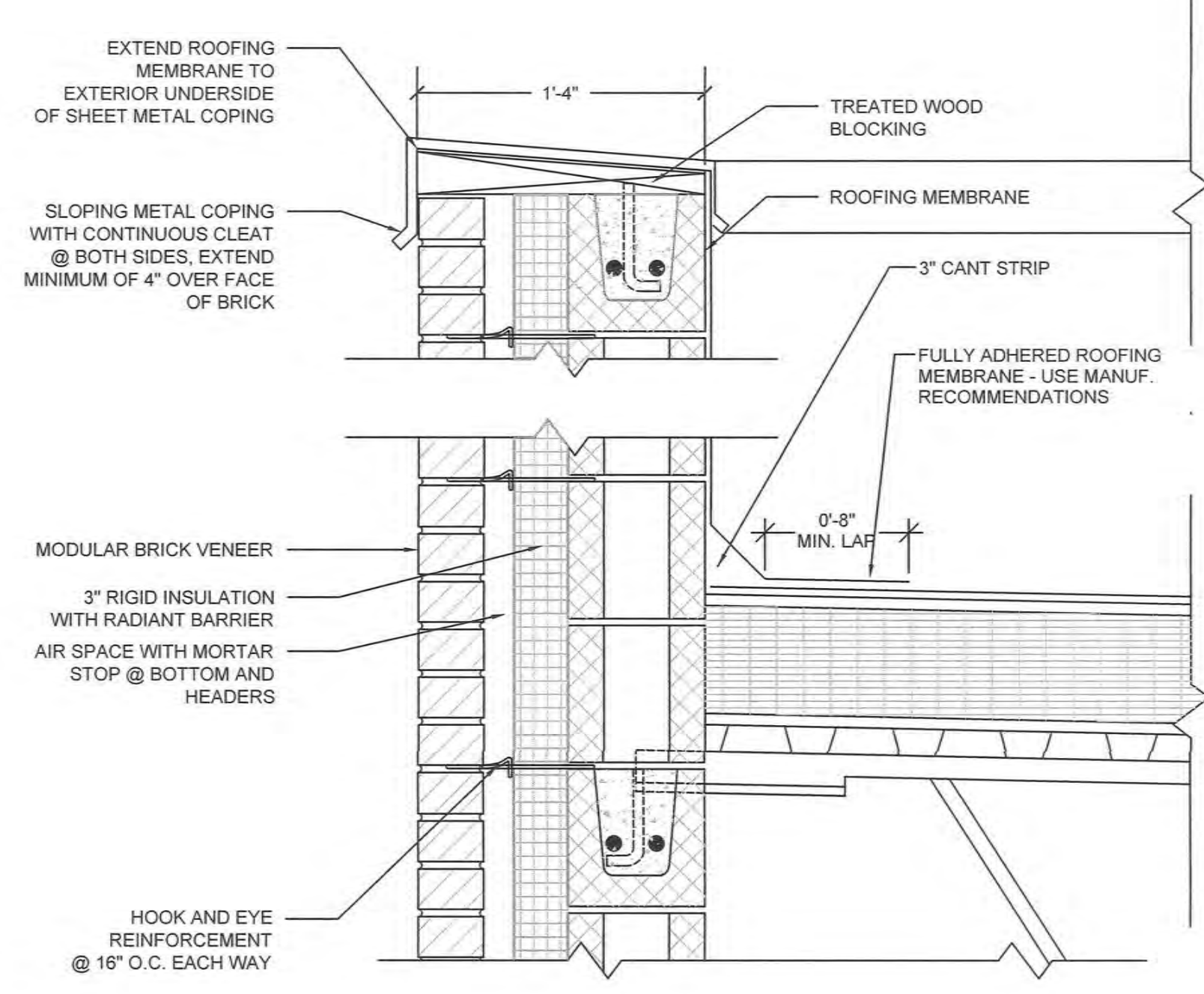


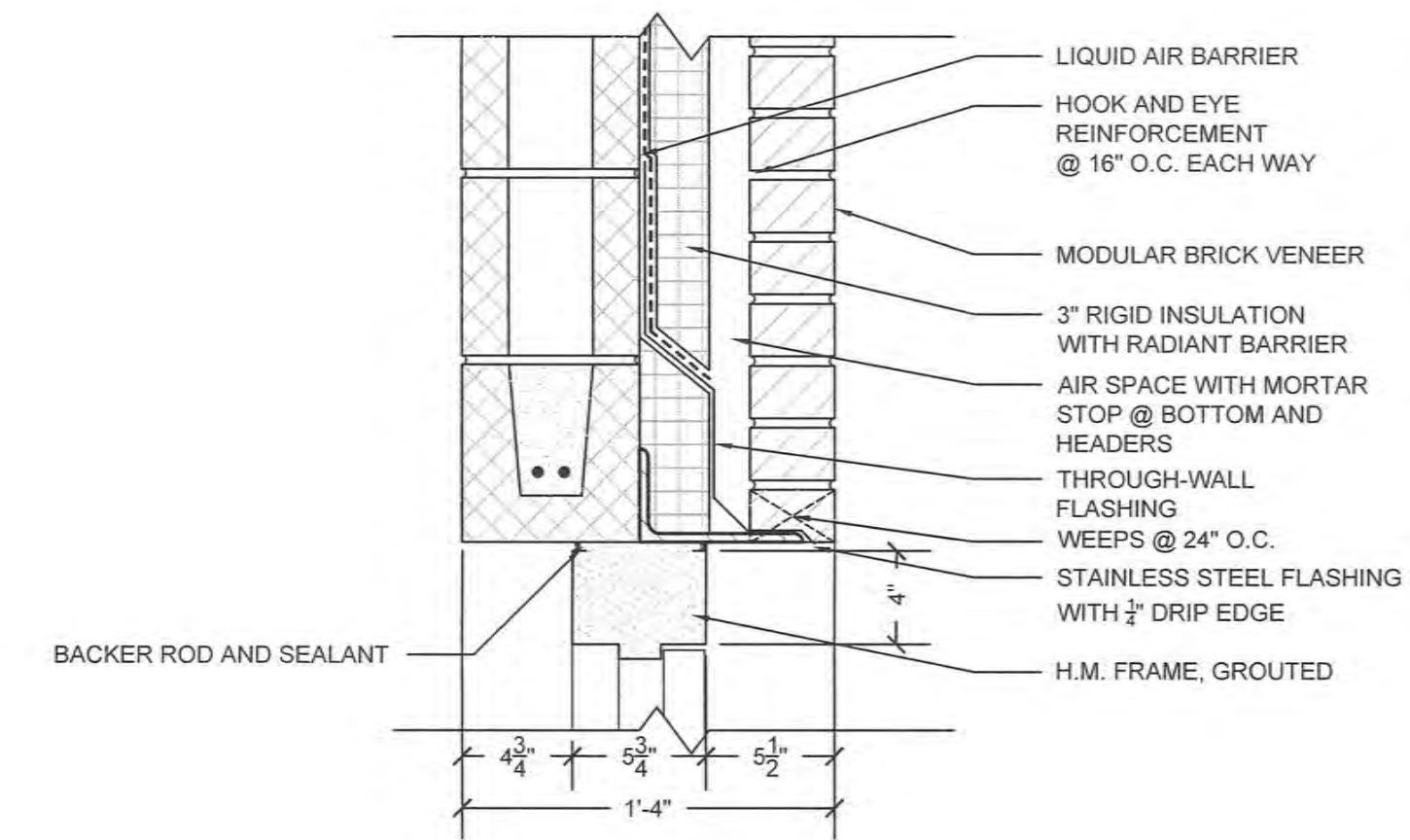
three inches = one foot
 one and one half inches = one foot
 one inch = one foot
 three quarters inch = one foot
 one half inch = one foot
 three eighths inch = one foot
 one quarter inch = one foot
 one eighth inch = one foot



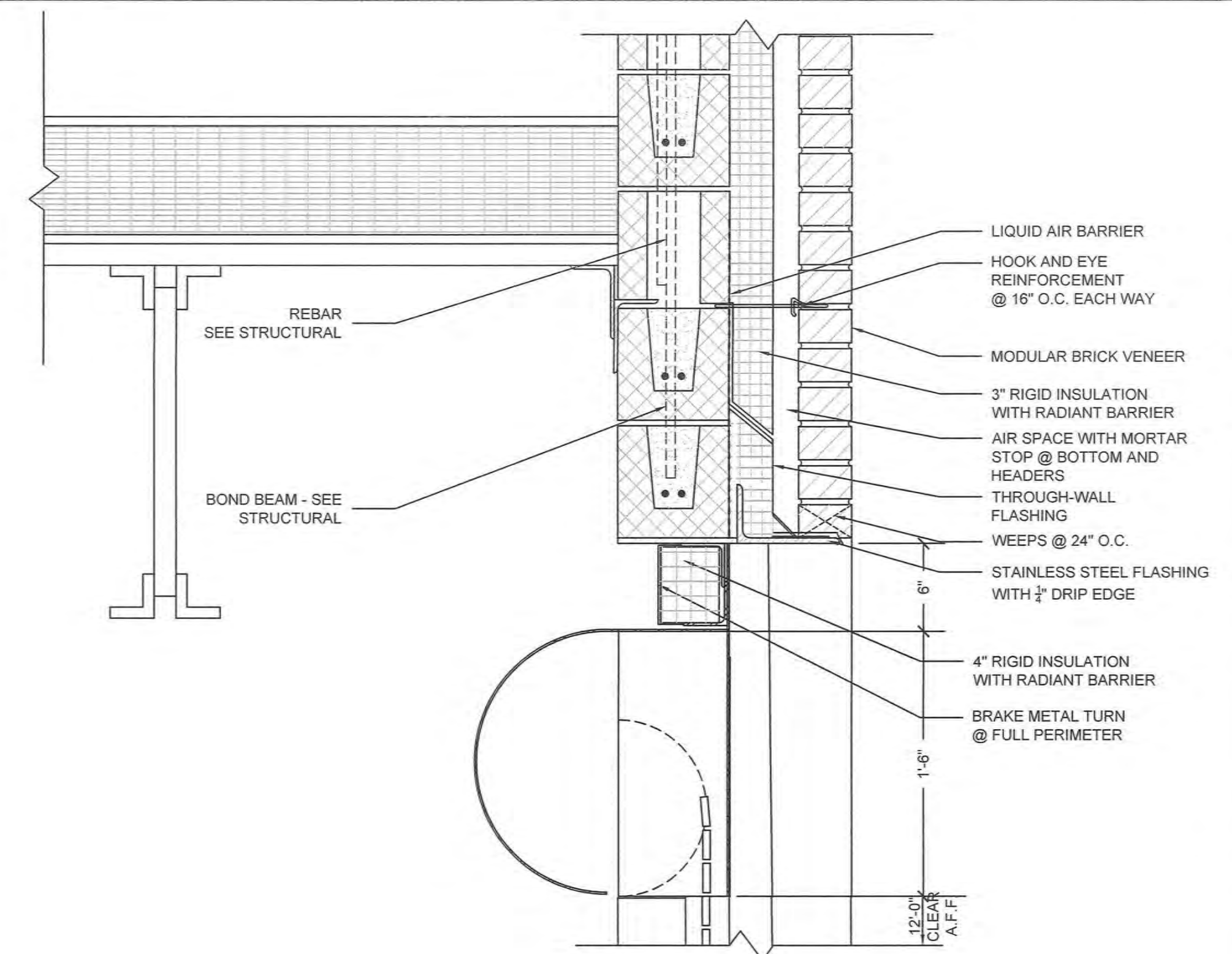
9 FOUNDATION DETAIL
1 1/2" = 1'-0"



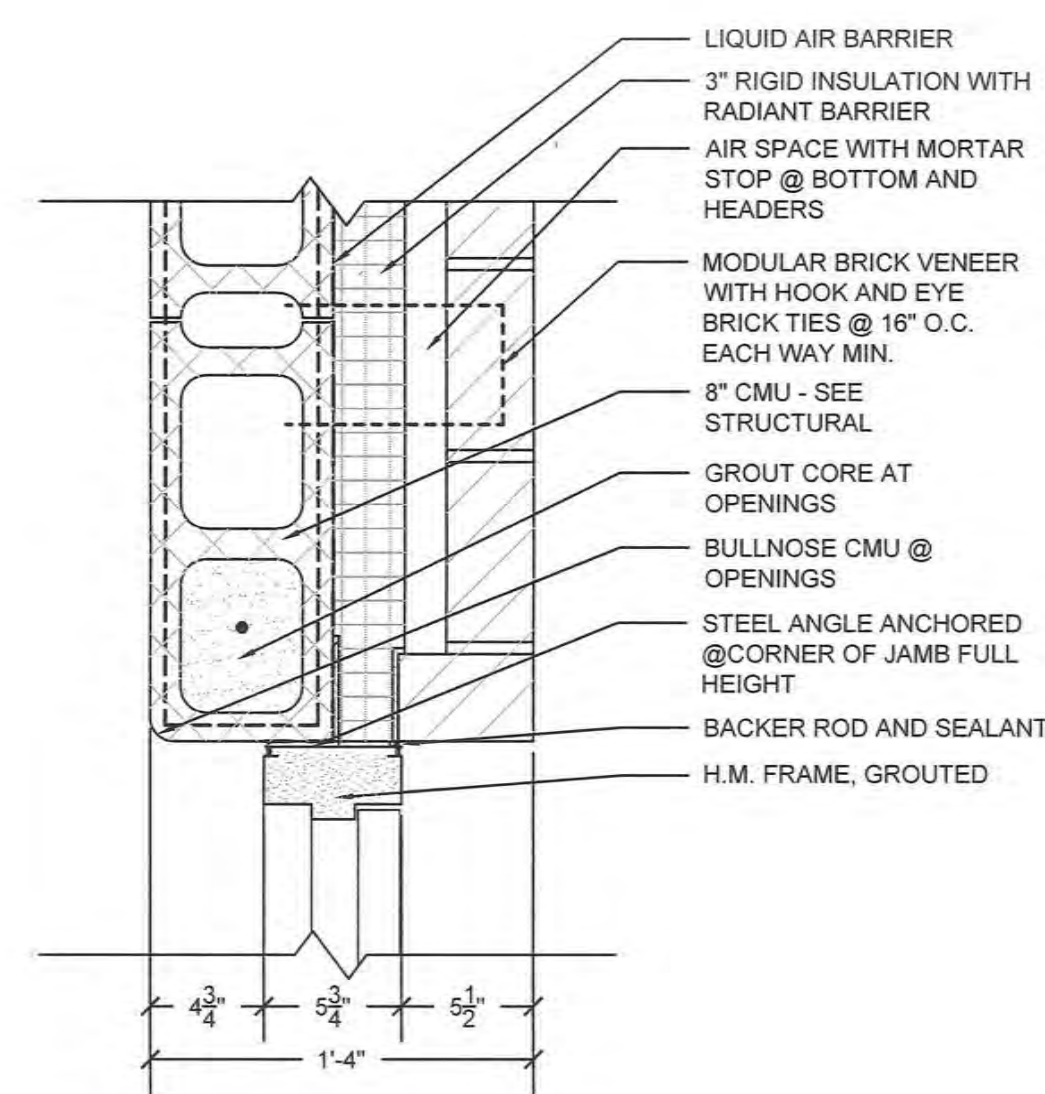
7 CAVITY WALL PARAPET DETAIL
1 1/2" = 1'-0"



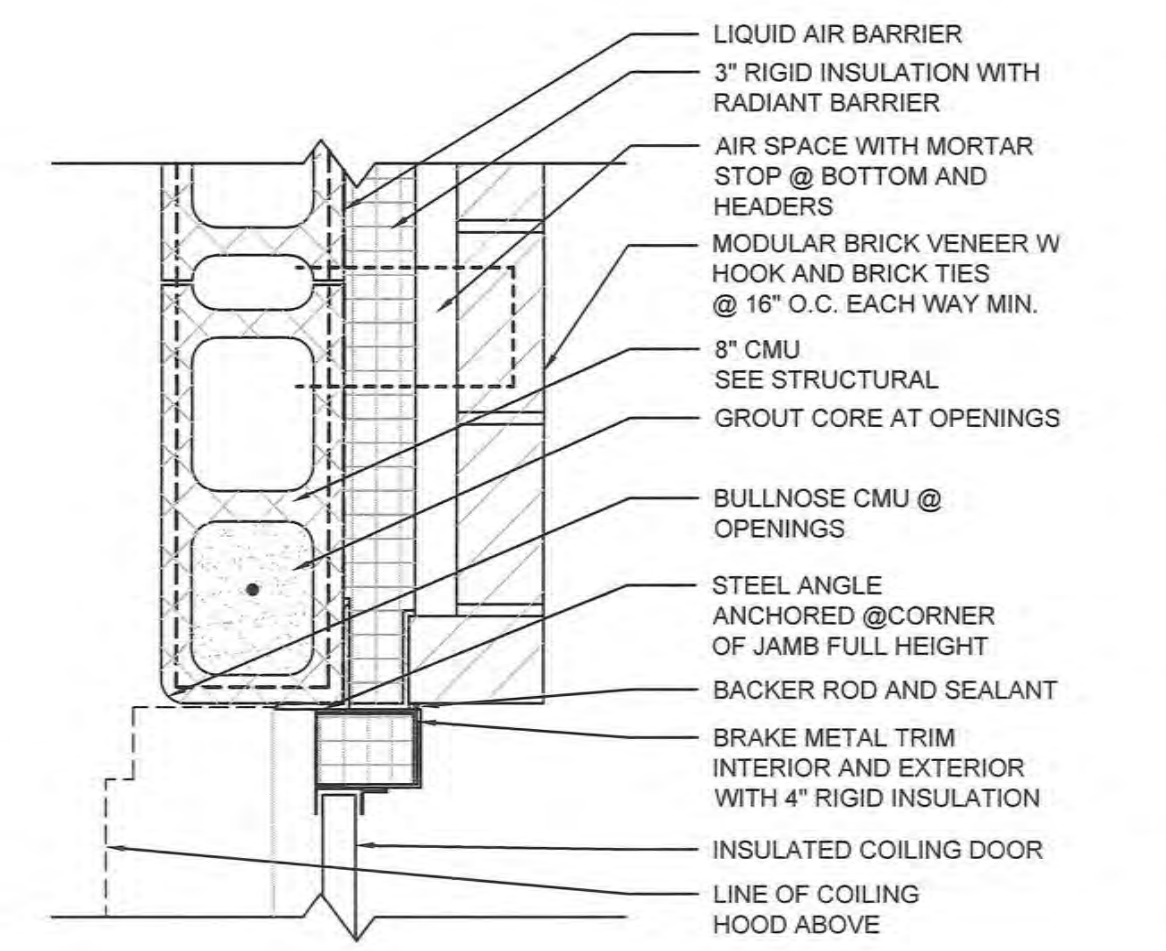
4 HEAD DETAIL @ MAN DOORS
1 1/2" = 1'-0"



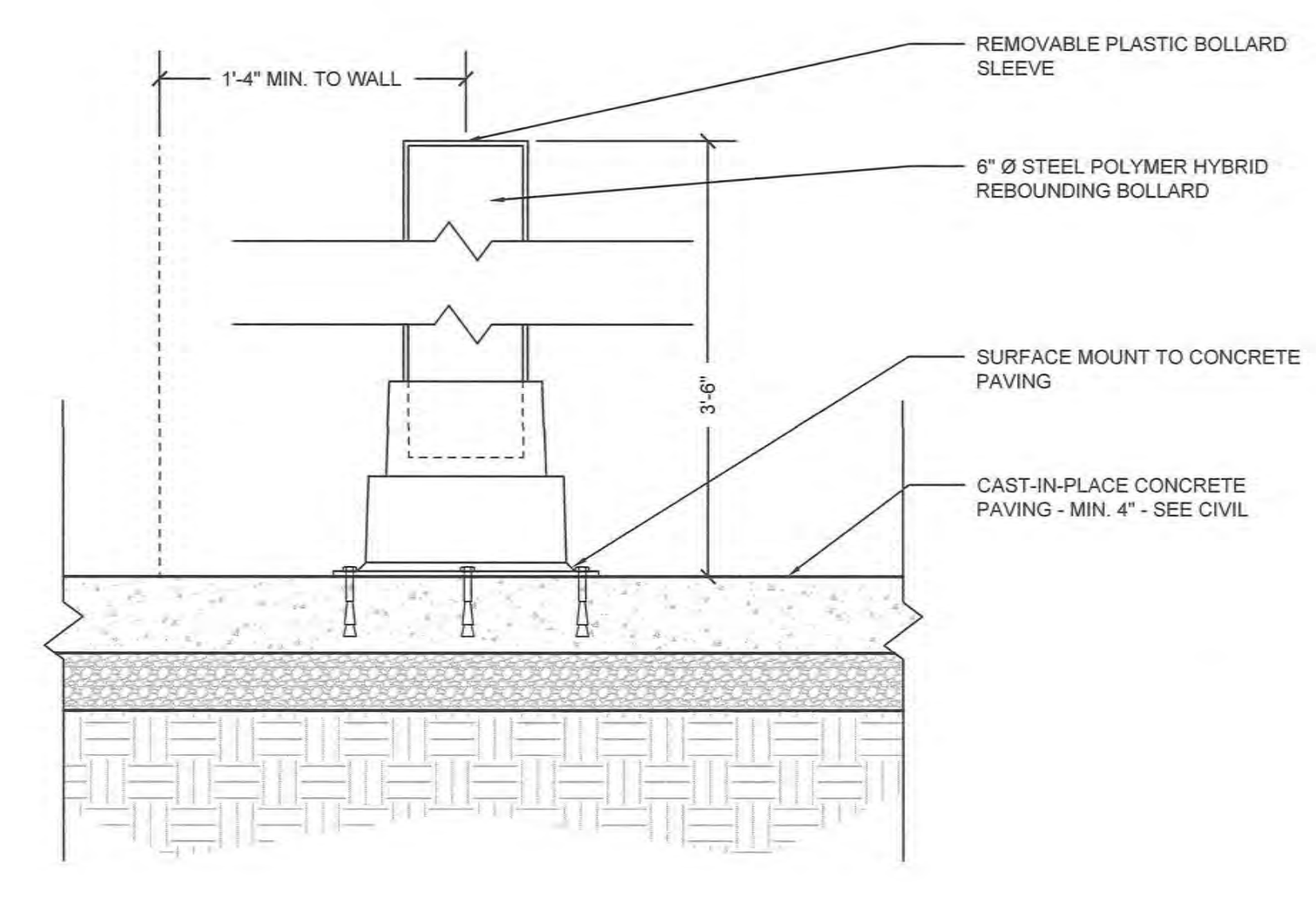
1 HEAD DETAIL @ OVERHEAD COILING DOORS
1 1/2" = 1'-0"



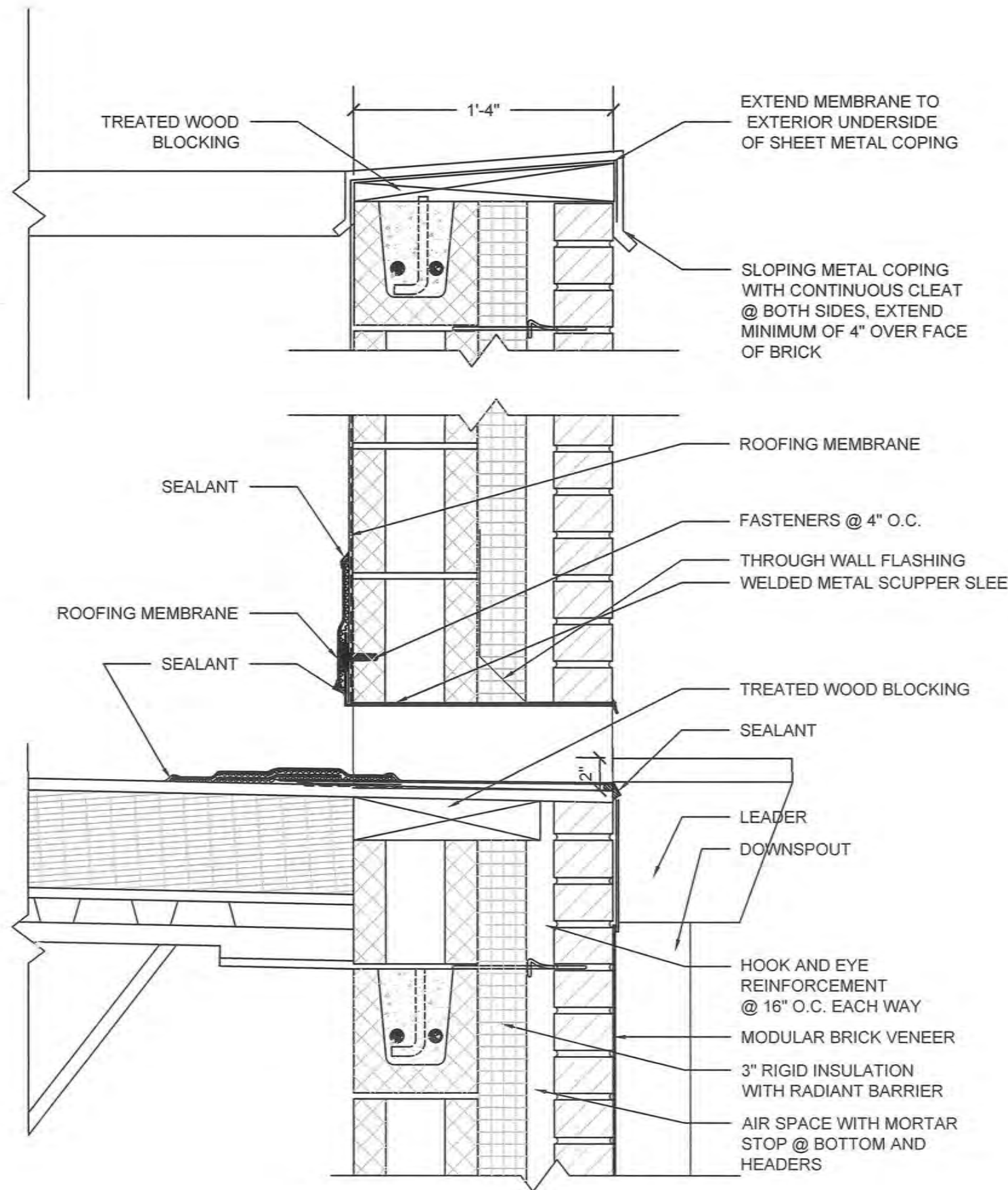
5 JAMB DETAIL @ MAN DOORS
1 1/2" = 1'-0"



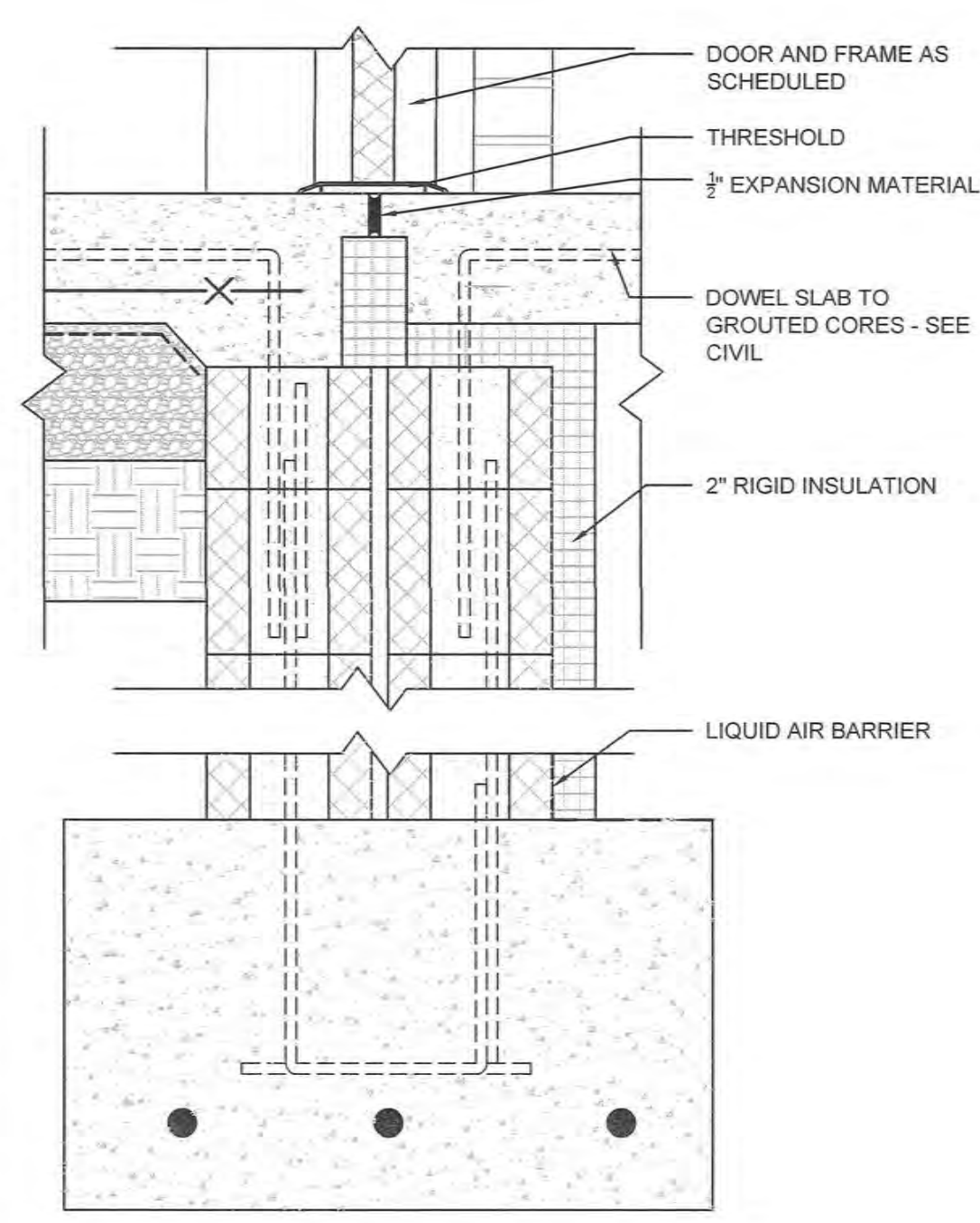
2 JAMB DETAIL @ OVERHEAD COILING DOORS
1 1/2" = 1'-0"



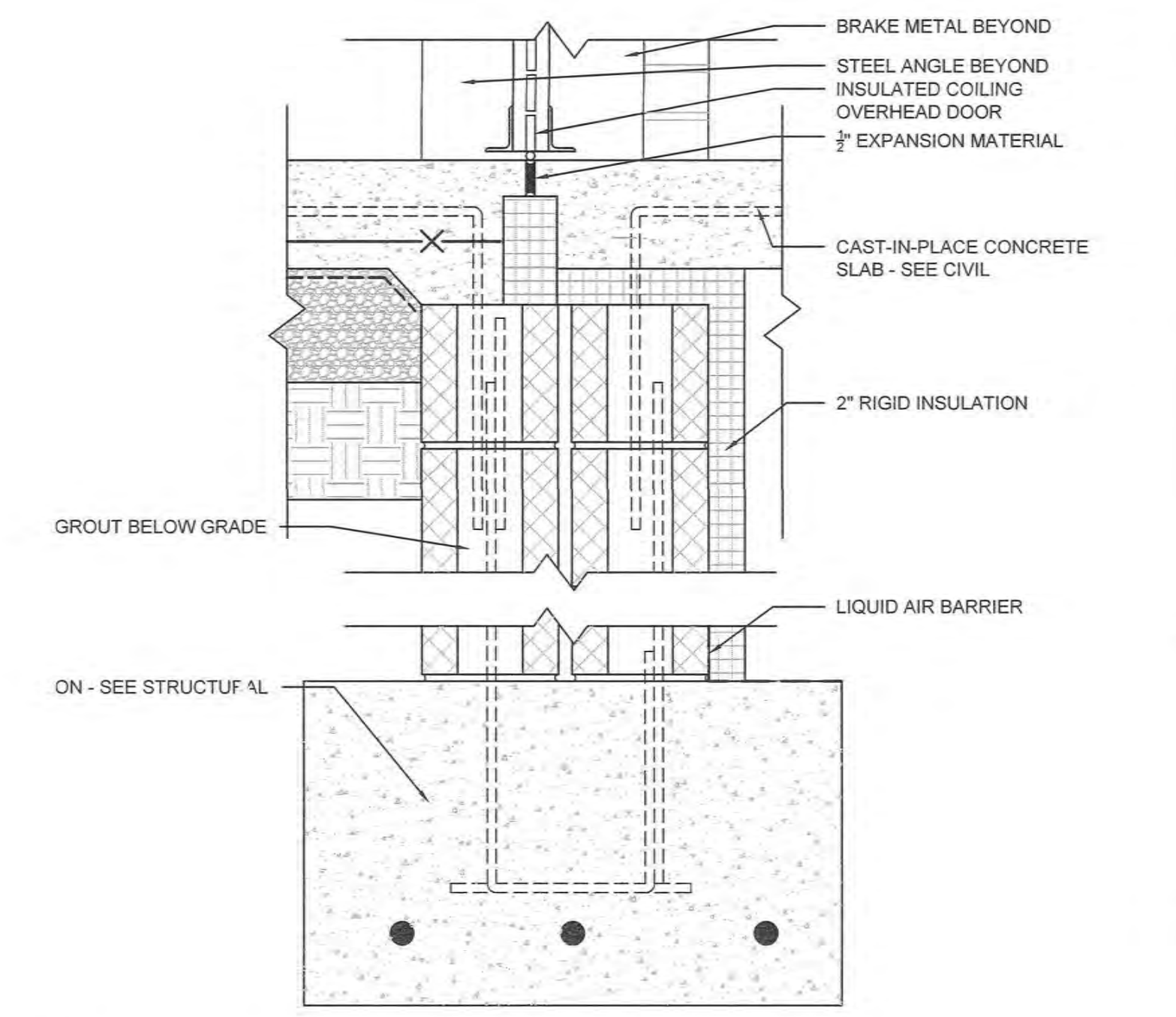
10 BOLLARD DETAIL
1 1/2" = 1'-0"



8 SCUPPER AND DOWNSPOUT DETAIL
1 1/2" = 1'-0"



6 SILL DETAIL @ MAN DOORS
1 1/2" = 1'-0"

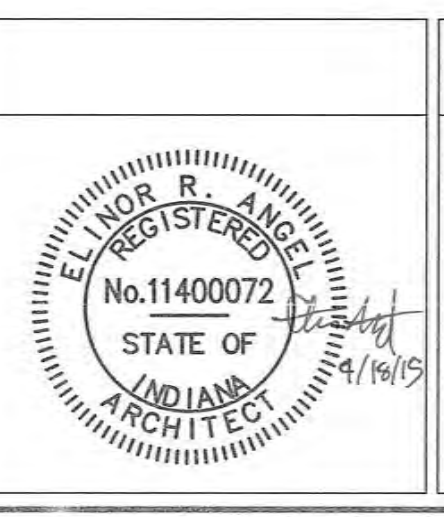


3 SILL DETAIL @ OVERHEAD COILING DOORS
1 1/2" = 1'-0"

100% CONSTRUCTION DOCUMENTS

Revisions:	Date

CONSULTANTS:



ARCHITECT/ENGINEERS:
APOGEE
 Consulting Group, PA
 Raleigh, NC
 Indianapolis, IN
 Philadelphia, PA
 Pittsburgh, PA
 Virginia Beach, VA
 Fort Collins, CO
 (619) 855-3422
 www.apogee-pa.com
 Apogee Project # 2014-121

Drawing Title
ARCHITECTURAL DETAILS
 Approved: Project Director

Project Title
REPLACE MAIN ELECTRICAL TO OUT-BUILDINGS
 Location
 FORT WAYNE, IN
 Date
 9/18/2015
 Checked
 KMN
 Drawn
 ERA
 Project Number
 610A4-12-188
 Building Numbers
 1,3,5,6,7,10,T4,T5,T6
 Drawing Number
A-501
 Dwg. 24 of 48

Office of
Construction and Facilities Management
 Department of
 Veterans Affairs