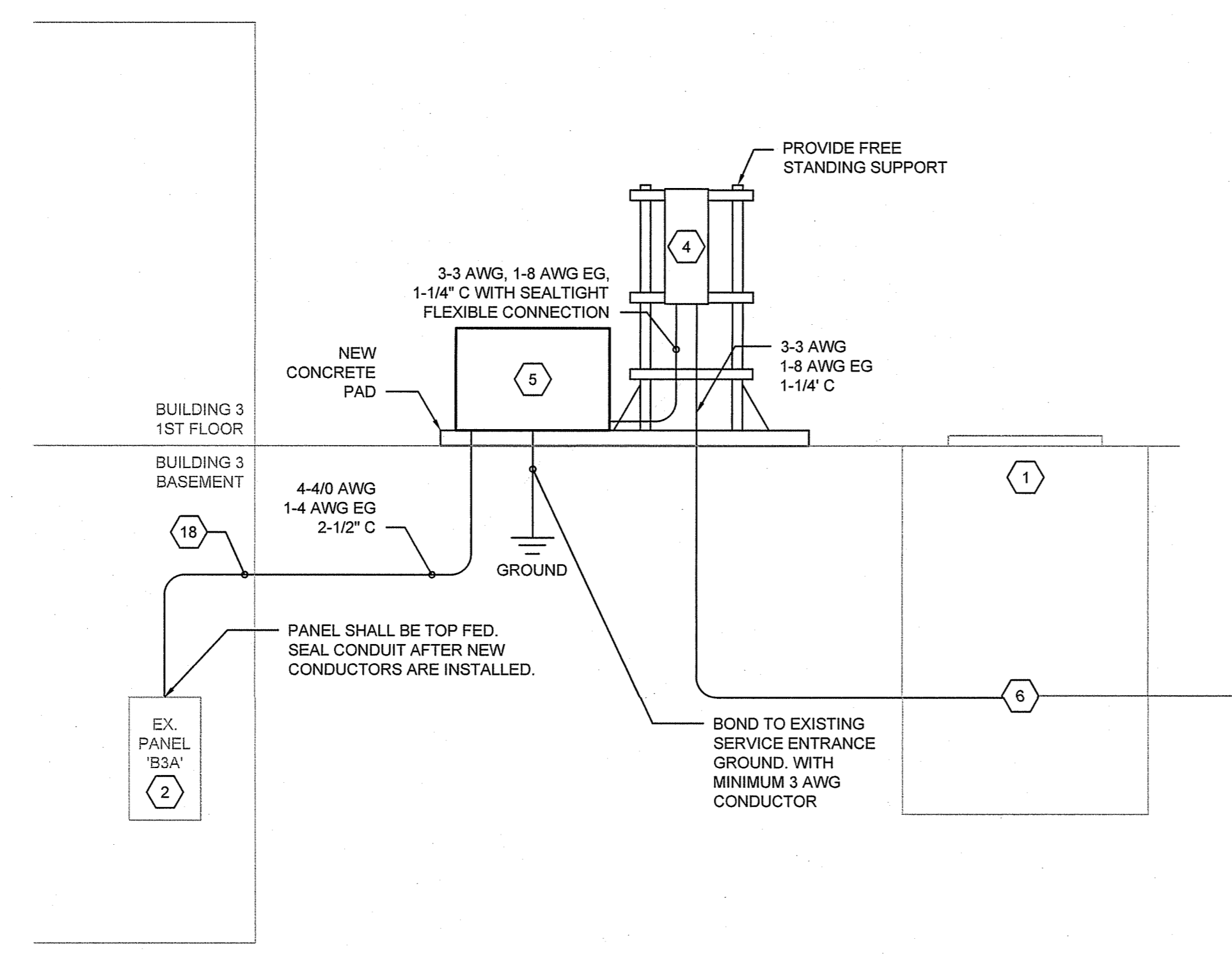


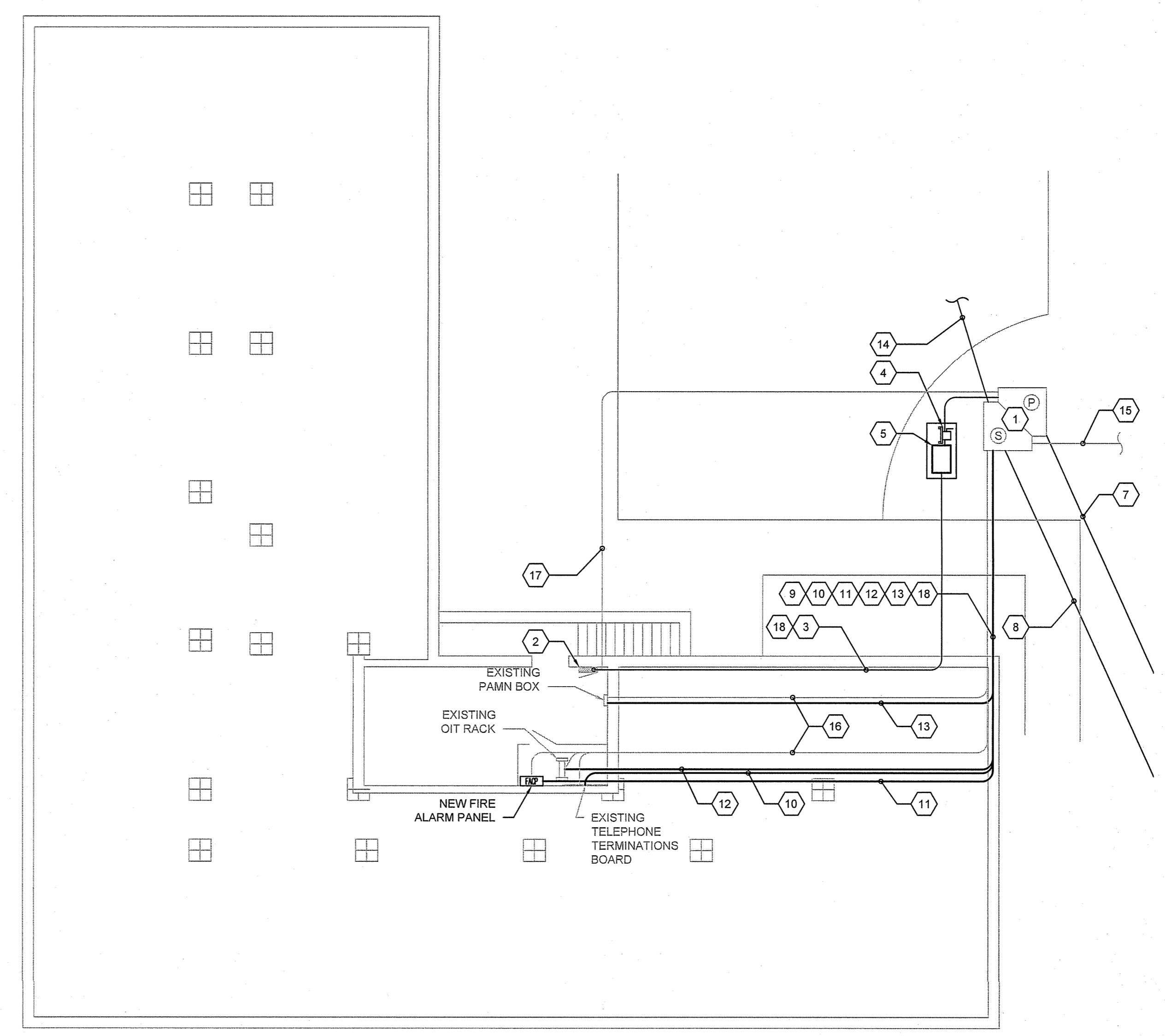
three inches = one foot
 one and one half inches = one foot
 one inch = one foot
 three quarters inch = one foot
 one half inch = one foot
 three eighths inch = one foot
 one quarter inch = one foot
 one eighth inch = one foot

- ### GENERAL NOTES
- CONTRACTOR SHALL VERIFY EXISTING CONDITIONS.
 - ALL CONDUITS SHALL BE SEALED AFTER NEW CABLES ARE INSTALLED, TERMINATED, AND TESTED.
 - ALL EXISTING CABLES SHALL BE REMOVED AFTER NEW CABLES ARE INSTALLED, TERMINATED, AND TESTED.
 - ALL TELECOM TERMINATIONS BOARD EQUIPMENT, TELEPHONE CABLE, AND OIT RACK SHALL BE GROUNDED PER NEC AND BICSI STANDARD.
 - ALL SPARE CONDUITS IN MANHOLES SHALL BE SEALED WITH AN APPROVED SEALANT.
 - PROVIDE A MINIMUM OF 15 FOOT LOOP FOR EVERY NEW CABLE.
 - CONTRACTOR SHALL SUPPORT ALL NEW CABLES PER BICSI STANDARDS.
 - PROVIDE SERVICE ENTRANCE PROTECTION AT EACH END FOR ALL COPPER LOW-VOLTAGE CABLING.
 - ALL EXISTING CONDITIONS/DRAWINGS ARE BASED ON BEST AVAILABLE INFORMATION AT THE TIME OF SURVEY AND VISUAL INSPECTION CONTRACTOR SHALL VERIFY ALL EXISTING CONDITIONS.

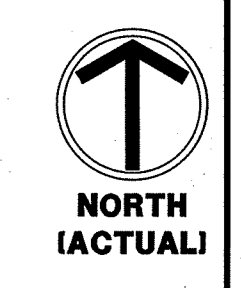
- ### KEY NOTES
- EXISTING ELECTRICAL POWER AND SIGNAL MANHOLES TO REMAIN.
 - EXISTING PANEL 'B3A' TO REMAIN. REFEED AS SHOWN.
 - PROVIDE NEW FEEDER FOR EXISTING PANEL 'B3A' COORDINATE POWER SWITCH OVER WITH COR.
 - PROVIDE NEW CIRCUIT BREAKER ON FREE-STANDING SUPPORT FOR NEW DRY TYPE TRANSFORMER. NEW CIRCUIT BREAKER SHALL BE WEATHERPROOF HEAVY DUTY, 600V, 3-POLE, 100A, NEMA 3R RATED.
 - PROVIDE NEW TRANSFORMER FOR POWER REFEED TO PANEL 'B3A'. NEW TRANSFORMER SHALL BE WEATHERPROOF, 75 KVA, 480V FRI, 208Y/120V SEC, 3Ø, 4W, NEMA 3R RATED.
 - PROVIDE NEW SPLICE IN ELECTRICAL POWER MANHOLE #2. SEE SHEET ES102 FOR MORE INFORMATION.
 - PROVIDE (2) 6" C WITH 2 RUNS OF 3-350KCMIL, 2-2 AWG EG, IN ONE CONDUIT. OTHER CONDUIT SHALL BE SPARE.
 - PROVIDE (2) 3" C AND (2) 4" C. SEE SHEETS E-501 AND E-502 FOR MORE INFORMATION.
 - PROVIDE (2) 4" C WITH CABLING. SEE SHEETS E-501 AND E-502 FOR MORE INFORMATION.
 - PROVIDE NEW 100 PR INDOOR/OUTDOOR TELEPHONE CABLING TERMINATION ON 110 OR 66 BLOCK(S) PER VA STANDARDS WITH SERVICE ENTRANCE PROTECTION.
 - PROVIDE NEW 6 STRAND INDOOR/OUTDOOR MULTI-MODE, 62.5 MICRON, TIGHT-BUFFERED, ARMORED FIBER FOR FIRE ALARM SYSTEM. SEE SHEETS ES102, E-501, AND E-502 FOR MORE INFORMATION.
 - PROVIDE NEW 72 STRAND SINGLE MODE INDOOR/OUTDOOR TIGHT-BUFFERED INTERLOCK ARMORED FIBER AND NEW 24 STRAND MULTI-MODE (50 MICRON OM4) INDOOR/OUTDOOR TIGHT-BUFFERED, INTERLOCK ARMORED FIBER. SEE SHEETS ES102, E-501, AND E-502 FOR MORE INFORMATION.
 - PROVIDE NEW PUBLIC ADDRESS MASS NOTIFICATION (PAMN) CABLE WITH SERVICE ENTRANCE PROTECTION. SEE SHEETS ES102, E-501, AND E-502 FOR MORE INFORMATION.
 - PROVIDE NEW (2) 3" C WITH CABLES. SEE SHEETS E-501 AND E-502 FOR MORE INFORMATION.
 - EXISTING 4" C FEEDING T4, T5, AND T6. PROVIDE NEW CABLING AS SHOWN ON SHEETS E-501 AND E-502.
 - CONTRACTOR SHALL REMOVE ALL EXISTING CABLING AFTER THE NEW CABLING HAS BEEN ENERGIZED, TESTED, AND SERVICE ACTIVATED. COORDINATE WITH COR. SEE SHEETS E-501 AND E-502 FOR MORE INFORMATION.
 - THE CONTRACTOR SHALL REMOVE THE EXISTING POWER FEED TO PANEL 'B3A' AFTER THE NEW FEED HAS BEEN ENERGIZED. SEAL EXISTING CONDUIT FEED. COORDINATE WITH COR.
 - CONTRACTOR SHALL PROVIDE NEW SLEEVES AS REQUIRED.



2 BUILDING 3 - PARTIAL POWER RE-FEED
 N.T.S.



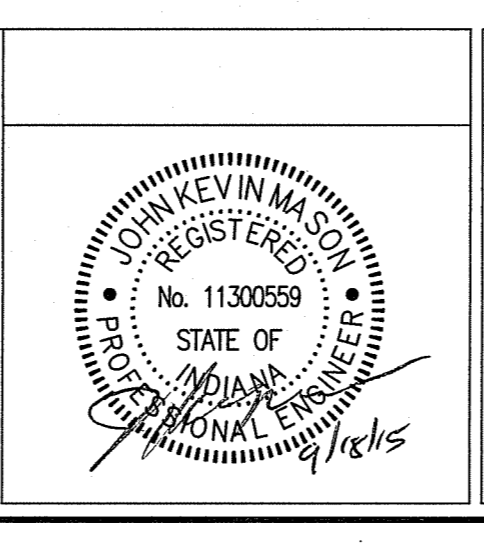
1 BUILDING 3 - BASEMENT ELECTRICAL PLAN
 1/8" = 1'-0"



100% CONSTRUCTION DOCUMENTS

Revisions:	Date

CONSULTANTS:



ARCHITECT/ENGINEERS:

APOGEE
 Consulting Group, PA
 www.apogee.com
 Apogee Project # 2014 121

Raleigh, NC
 Indianapolis, IN
 Philadelphia, PA
 Pittsburgh, PA
 Virginia Beach, VA
 Fort Collins, CO
 (919) 858-7420
 Apogee Project # 2014 121

Civil / Structural Engineer
GUIDON
 935 N Capital Avenue, STE 100
 Indianapolis, IN 46205
 Tel (317) 800-6388

Drawing Title
BUILDING 3 - ELECTRICAL PLANS

Approved: Project Director

Project Title
REPLACE MAIN ELECTRICAL TO OUT-BUILDINGS

Location
 FORT WAYNE, IN

Date
 9/18/2015

Checked
 JKM

Drawn
 JWB

Project Number
 610A4-12-188

Building Numbers
 1,3,5,6,7,10,T4,T5,T6

Drawing Number
E-103
 Dwg. 32 of 48

Office of
Construction and Facilities Management

Department of
Veterans Affairs