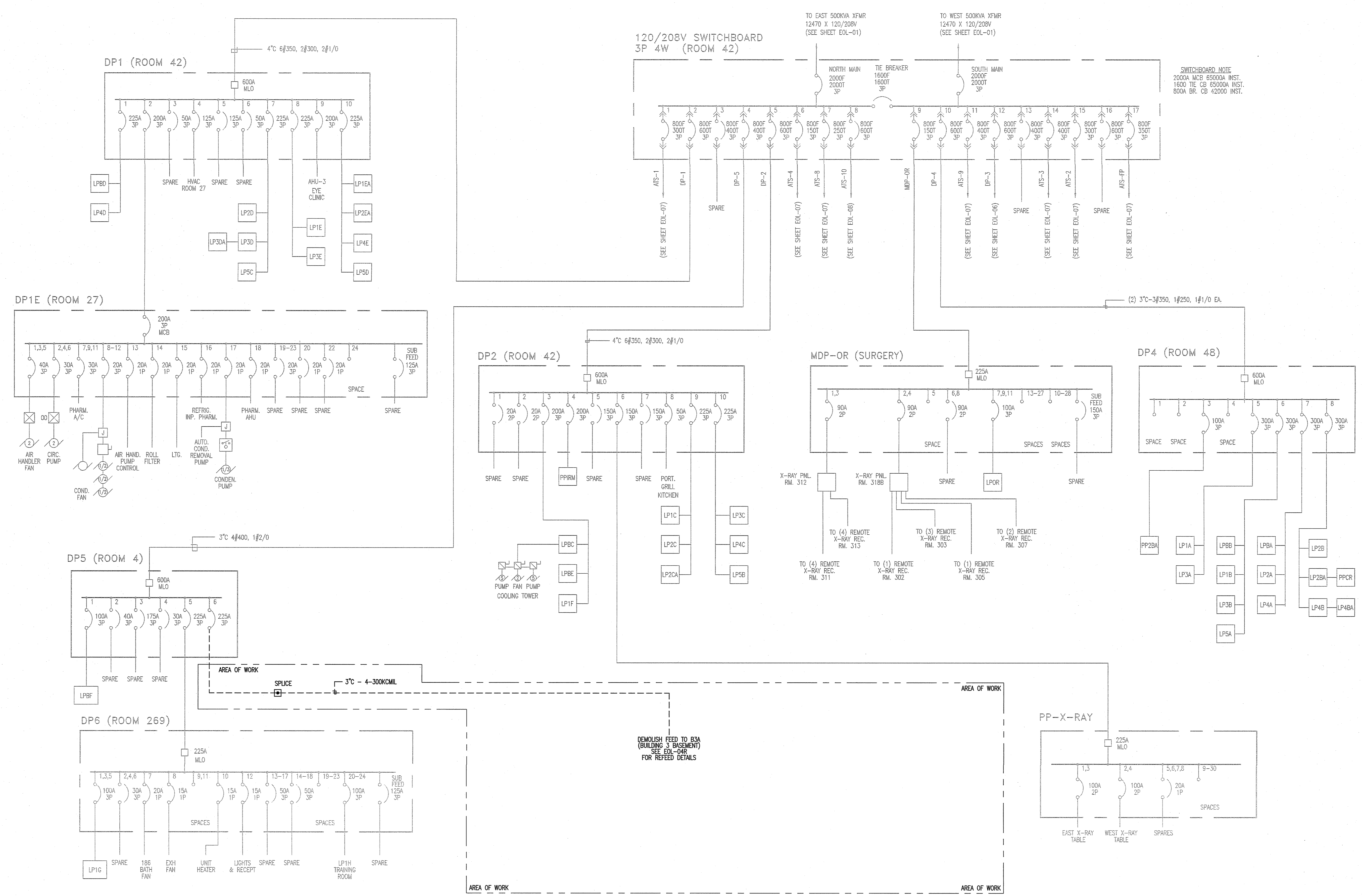

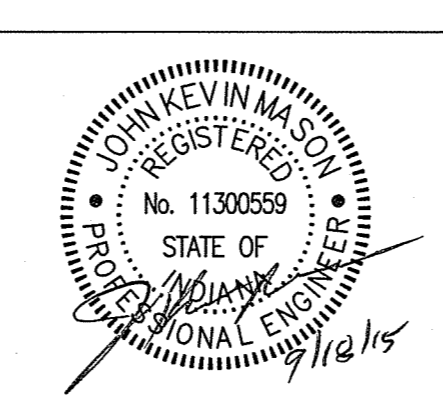


three inches = one foot  
 one and one half inches = one foot  
 one inch = one foot  
 three quarters inch = one foot  
 one half inch = one foot  
 one quarter inch = one foot  
 three eighths inch = one foot  
 one eighth inch = one foot  
 one sixteenth inch = one foot



1 SINGLE LINE DIAGRAM - EXCERPT FROM VA FT. WAYNE EOL-05R, BUILDING 1  
 N.T.S.

100% CONSTRUCTION DOCUMENTS

<b>CONSULTANTS:</b>  		<b>ARCHITECT/ENGINEERS:</b>  Raleigh, NC Indianapolis, IN Philadelphia, PA Pittsburgh, PA Virginia Beach, VA Fort Collins, CO (819) 858-7420 www.apogee-pa.com Apogee Project # 2014 121		Drawing Title <b>ELECTRICAL SINGLE LINE DIAGRAM EXCERPT FROM EOL-05R</b>		Project Title <b>REPLACE MAIN ELECTRICAL TO OUT-BUILDINGS</b>		Project Number 610A4-12-188		Office of Construction and Facilities Management	
Revisions:				Approved: Project Director		Location FORT WAYNE, IN		Building Numbers 1,3,5,6,7,10,T4,T5,T6		Drawing Number <b>E-603</b> Dwg. 41 of 48	
Date		State of Indiana No. 11300555 Kevin M. Smith Professional Engineer		905 N Capitol Avenue, STE 100 Indianapolis, IN 46205 Tel: (317) 900-6388		Date 9/18/2015		Checked JKM		Drawn JWB	