

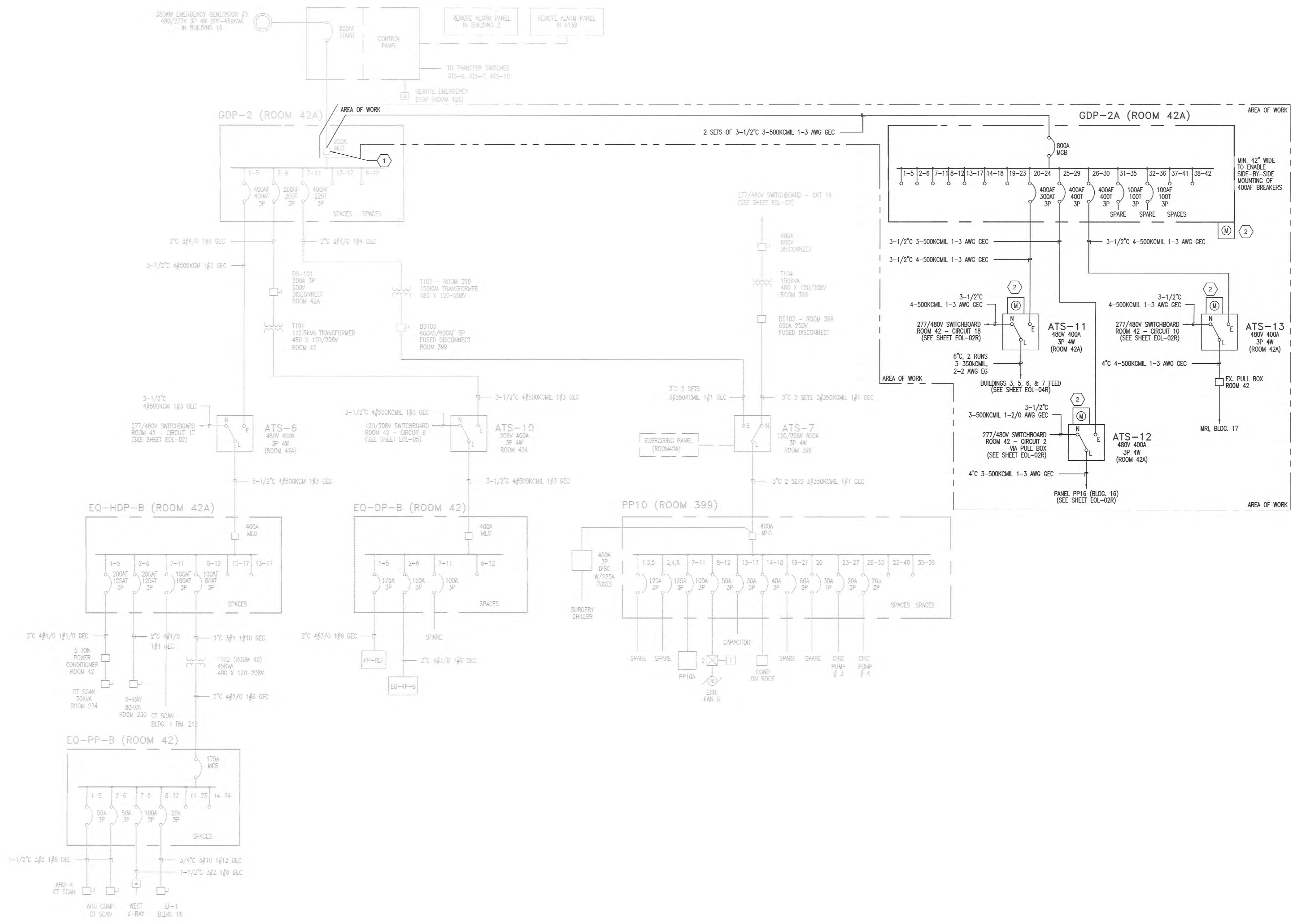
three inches = one foot
 one and one half inches = one foot
 one inch = one foot
 three quarters inch = one foot
 one half inch = one foot
 three eighths inch = one foot
 one quarter inch = one foot
 one eighth inch = one foot

GENERAL NOTES

- CONTRACTOR SHALL NOTIFY THE COR AT LEAST TWO WEEKS IN ADVANCE OF ANY SHUT DOWN.

KEY NOTES

- THE CONTRACTOR SHALL CLEAN THE LUGS AND COPPER CABLING WITH AN APPROVED MATERIAL.
- PROVIDE SQUARE D POWER LOGIC METER PM750 AND ASSOCIATED EQUIPMENT IN NEW PANEL GDP-2A, ATS#11, ATS#12 AND ATS#13.



1 SINGLE LINE DIAGRAM - EXCERPT FROM VA FT. WAYNE EOL-08R, BUILDING 1, 3, 5, 6, AND 7
 N.T.S.

100% CONSTRUCTION DOCUMENTS

CONSULTANTS: 		ARCHITECT/ENGINEERS:  Raleigh, NC Indianapolis, IN Philadelphia, PA Pittsburgh, PA Virginia Beach, VA Fort Collins, CO (919) 850-7420 www.apogee.com Apogee Project # 2014 121		Drawing Title ELECTRICAL SINGLE LINE DIAGRAM EXCERPT FROM EOL-08R Approved: Project Director		Project Title REPLACE MAIN ELECTRICAL TO OUT-BUILDINGS Location FORT WAYNE, IN		Project Number 610A4-12-188 Building Numbers 1,3,5,6,7,10,14,T5,T6		Office of Construction and Facilities Management Department of Veterans Affairs	
Revisions: _____ Date _____				806 N Capitol Avenue, STE 100 Indianapolis, IN 46202 Tel: (317) 850-6588		Date 9/18/2015		Checked JKM		Drawing Number E-604 Dwg. 42 of 48	