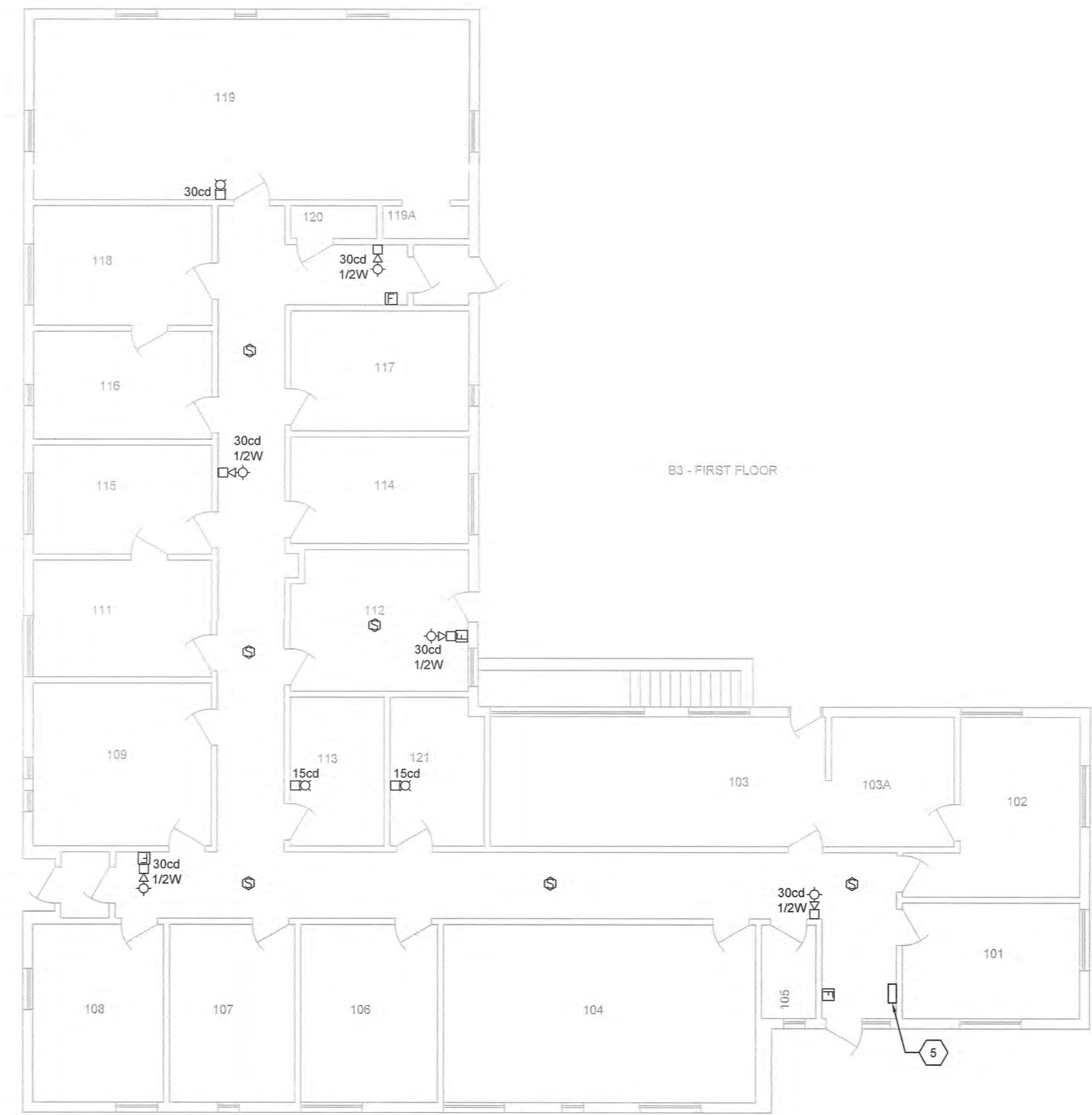
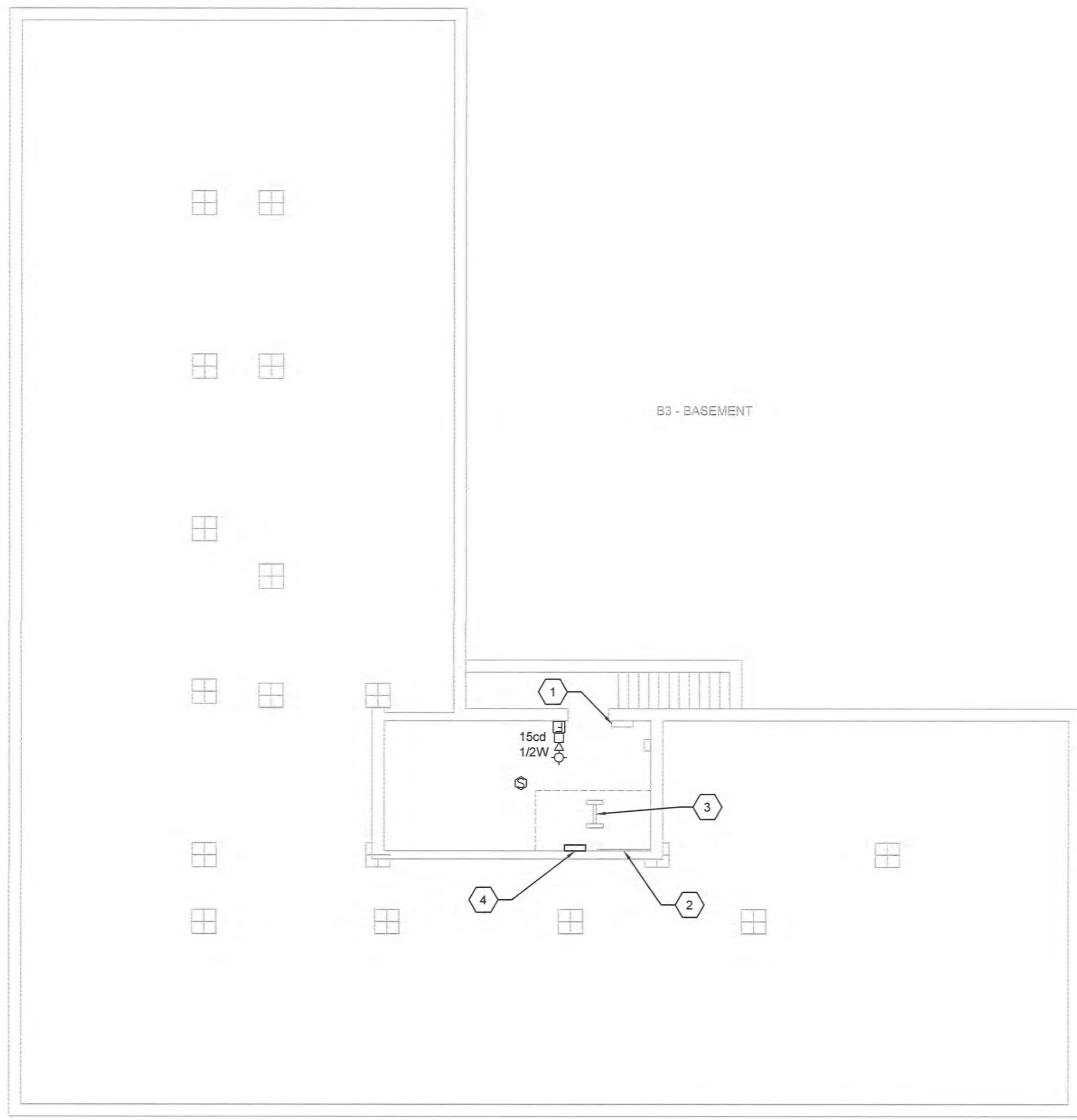
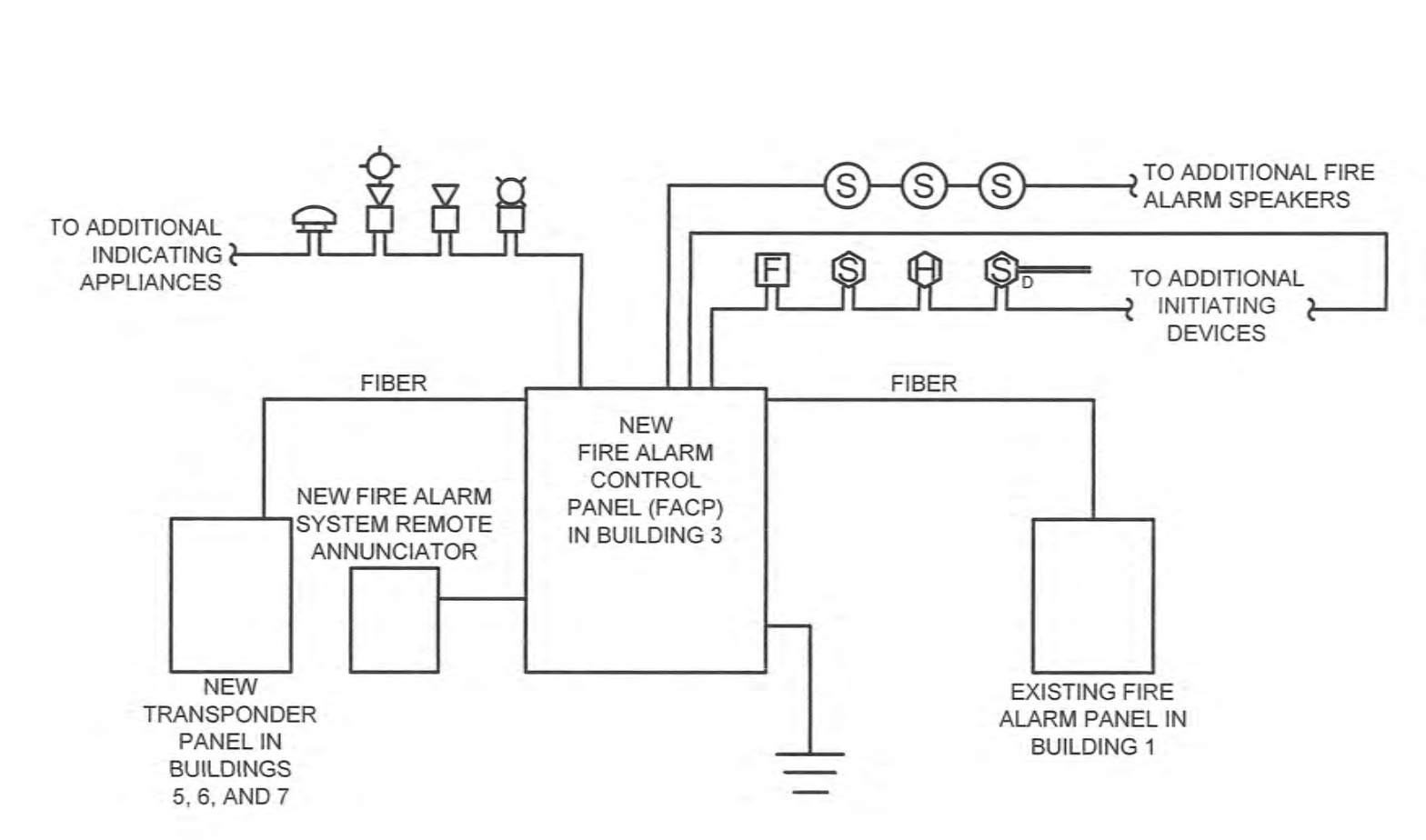


one eighth inch = one foot
 one quarter inch = one foot
 one half inch = one foot
 three eighths inch = one foot
 three quarters inch = one foot
 one inch = one foot
 one and one half inches = one foot
 three inches = one foot



1 BUILDING 3 - BASEMENT FIRE ALARM PLAN
 1/8" = 1'-0"

2 BUILDING 3 - FIRST FLOOR FIRE ALARM PLAN
 1/8" = 1'-0"



- NOTES:**
- FIRE ALARM SYSTEM SHALL BE INTERCONNECTED WITH ACCESS CONTROL SYSTEM TO ALLOW EGRESS DURING ALARM CONDITIONS. COORDINATE BETWEEN ACCESS CONTROL SYSTEM AND FIRE ALARM SYSTEM MANUFACTURERS.
 - ALL FIRE ALARM WIRING SHALL BE IN FACTORY PAINTED "RED" EMT CONDUIT.
 - ALL WIRING SHALL BE AS RECOMMENDED BY MANUFACTURER.
 - PROVIDE SEPARATE OUTPUT SIGNALS TO AIR HANDLER UNIT VFD FOR INDIVIDUAL UNIT SHUT-DOWN.
 - PROVIDE ZONE ADAPTER MODULES TO CONNECT NON-ADDRESSIBLE DEVICES SUCH AS FLOW AND TAMPER SWITCHES, DOOR HOLD-OPEN DEVICES, AND CONTROL SIGNALS.
 - PROVIDE POWER SUPPLY AND/OR NAC (NOTIFICATION APPLIANCE CIRCUIT) PANEL AS REQUIRED FOR ADDITIONAL DEVICES.
 - PROVIDE POWER AMPLIFIERS FOR ALL SPEAKERS.
 - THE NEW FIRE ALARM SYSTEM SHALL MATCH THE EXISTING SIMPLEX/GRINNELL FIRE ALARM SYSTEM.
 - GROUND THE NEW FIRE ALARM SYSTEM TO THE EXISTING BUILDING GROUNDING SYSTEM.
 - THE CONTRACTOR SHALL SUBMIT THE FIRE ALARM DRAWINGS TO THE STATE OF INDIANA FOR APPROVAL PRIOR TO SUBMITTING TO THE VA.

3 FIRE ALARM SYSTEM RISER DIAGRAM
 N.T.S.

GENERAL NOTES

- ALL FIRE ALARM NEW WORK SHALL BE COORDINATED WITH THE COR.
- ALL OLD FIRE ALARM DEVICES SHALL BE REPLACED WITH NEW DEVICES.
- ALL FIRE ALARM CABLING SHALL BE IN CONDUIT/RACEWAY.
- CONTRACTOR SHALL RECESS ALL DEVICES IN WALLS.
- ALL CONDUITS/RACEWAYS SHALL BE FACTORY PAINTED "RED".

KEY NOTES

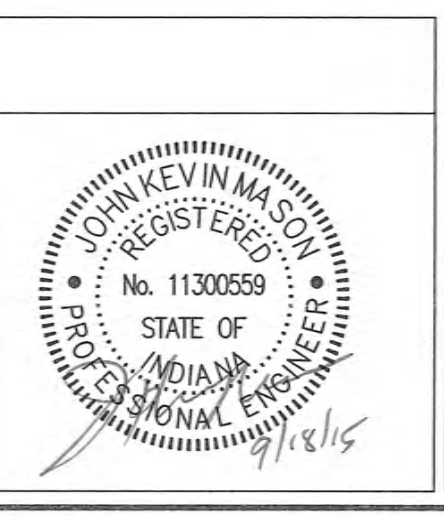
- EXISTING ELECTRICAL PANEL 'B3A' 225A MCB, 208/120V, 3 φ, 4 WIRE TO REMAIN.
- EXISTING TELEPHONE TERMINAL BOARD TO REMAIN.
- EXISTING OIT RACK TO REMAIN.
- PROVIDE NEW FIRE ALARM PANEL (TO MATCH THE EXISTING SIMPLEX/GRINNELL FIRE ALARM SYSTEM).
- PROVIDE NEW FIRE ALARM MODE CONTROLLER (TO MATCH THE EXISTING SIMPLEX/GRINNELL FIRE ALARM SYSTEM).



100% CONSTRUCTION DOCUMENTS

Revisions:	Date

CONSULTANTS:



ARCHITECT/ENGINEERS:

APOGEE
 Consulting Group, PA
 www.apogee.com
 Apogee Project # 2014 121

Raleigh, NC
 Indianapolis, IN
 Philadelphia, PA
 Pittsburgh, PA
 Virginia Beach, VA
 Fort Collins, CO
 (919) 555-7422

Civil / Structural Engineer

GUIDON
 955 N Capitol Avenue, STE 100
 Indianapolis, IN 46205
 Tel (317) 600-6388

Drawing Title
 BUILDING 3 - BASEMENT & FIRST FLOOR FIRE ALARM PLANS

Approved: Project Director

Project Title
 REPLACE MAIN ELECTRICAL TO OUT-BUILDINGS

Location
 FORT WAYNE, IN

Date
 9/18/2015

Checked
 JKM

Drawn
 JWB

Project Number
 610A4-12-188

Building Numbers
 1,3,5,6,7,10,T4,T5,T6

Drawing Number
FA101
 Dwg. 45 of 48

Office of Construction and Facilities Management

Department of Veterans Affairs