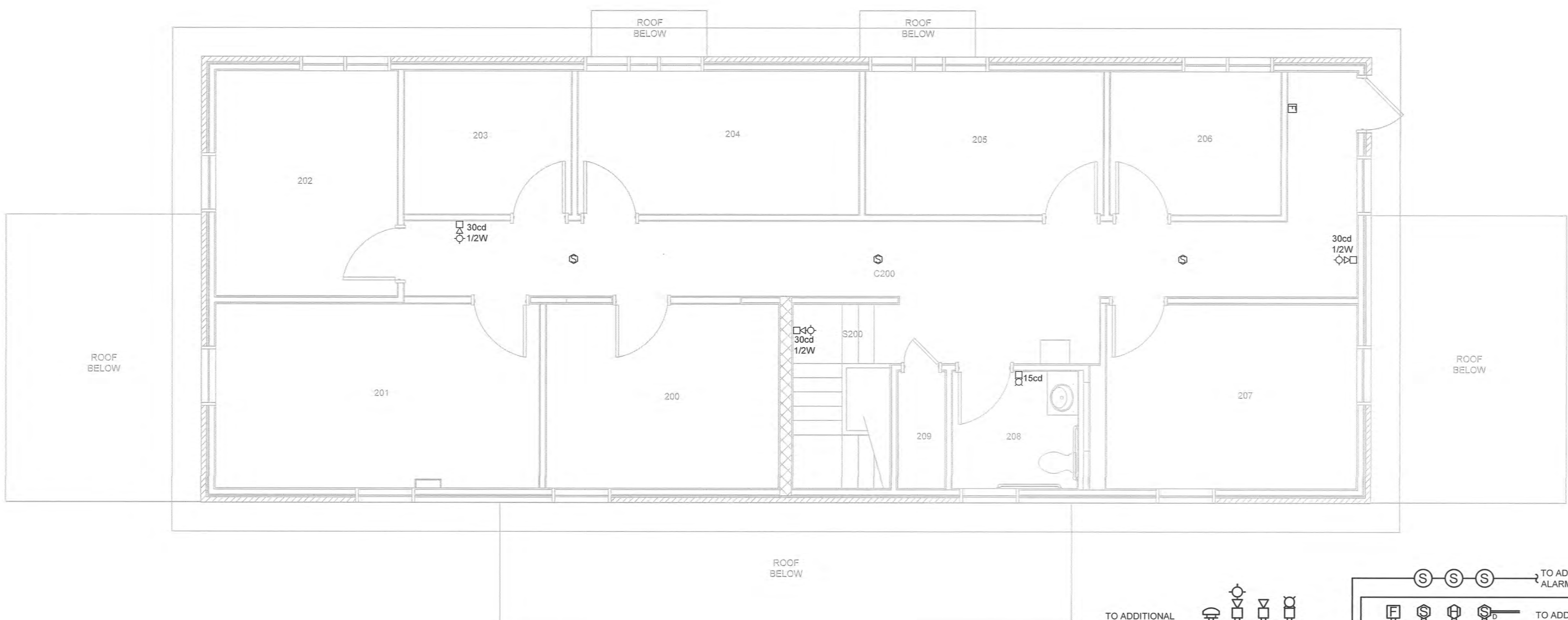
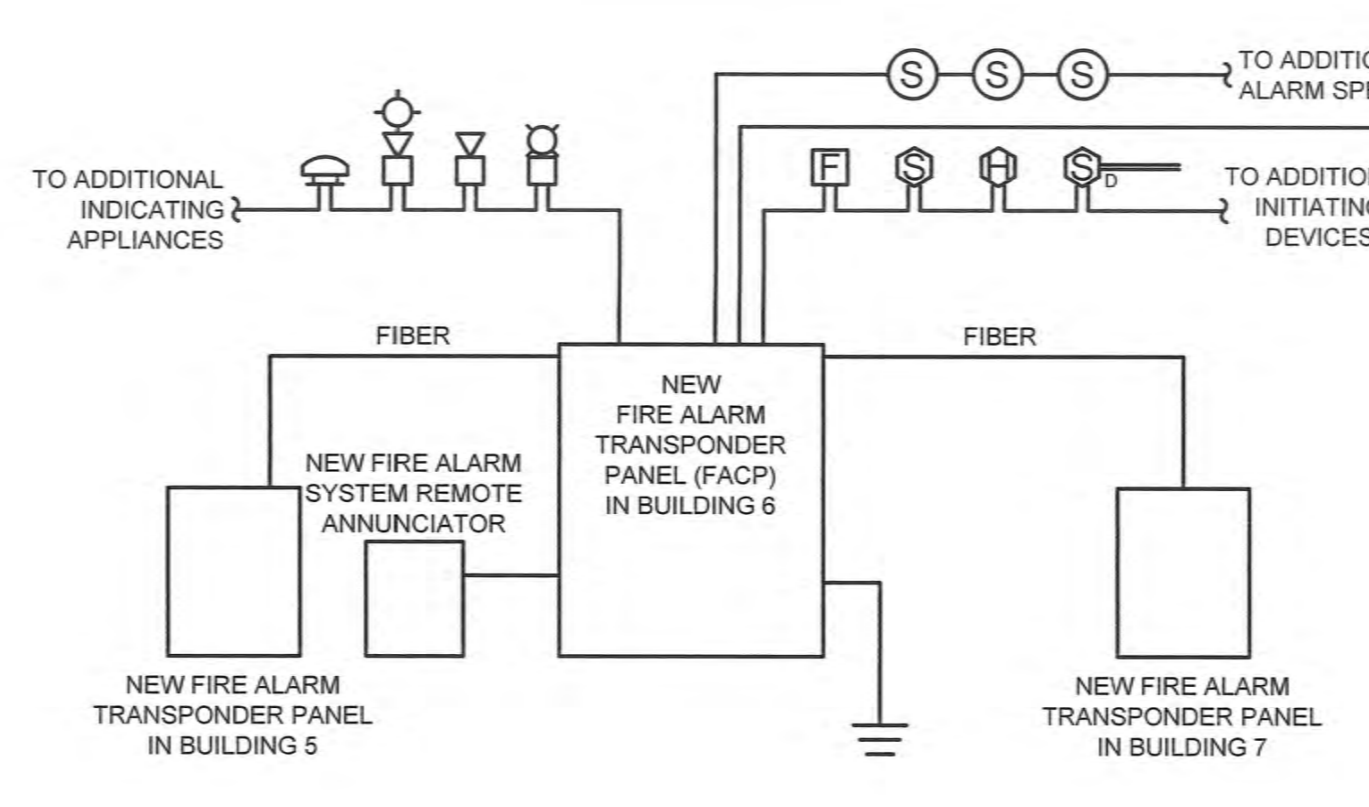


one eighth inch = one foot
 one quarter inch = one foot
 three eighths inch = one foot
 one half inch = one foot
 three quarters inch = one foot
 one inch = one foot
 one and one half inches = one foot
 three inches = one foot

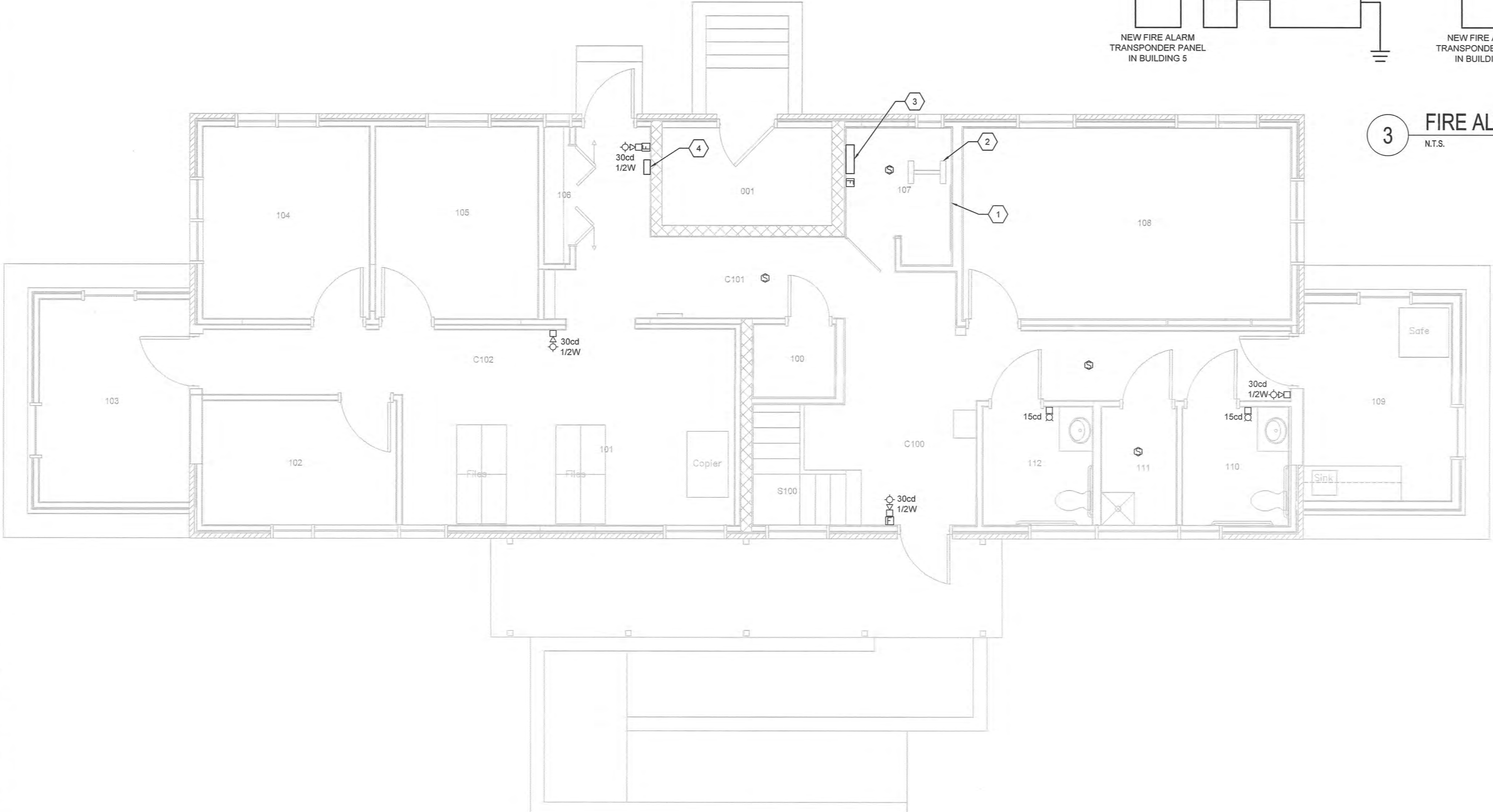


2 BUILDING 6 - SECOND FLOOR FIRE ALARM PLAN
 1/4" = 1'-0"



3 FIRE ALARM SYSTEM RISER DIAGRAM
 N.T.S.

- NOTES:**
1. FIRE ALARM SYSTEM SHALL BE INTERCONNECTED WITH ACCESS CONTROL SYSTEM TO ALLOW EGRESS DURING ALARM CONDITIONS. COORDINATE BETWEEN ACCESS CONTROL SYSTEM AND FIRE ALARM SYSTEM MANUFACTURERS.
 2. ALL FIRE ALARM WIRING SHALL BE IN FACTORY PAINTED "RED" EMT CONDUIT.
 3. ALL WIRING SHALL BE AS RECOMMENDED BY MANUFACTURER.
 4. PROVIDE SEPARATE OUTPUT SIGNALS TO AIR HANDLER UNIT VFD FOR INDIVIDUAL UNIT SHUT-DOWN.
 5. PROVIDE ZONE ADAPTER MODULES TO CONNECT NON-ADDRESSIBLE DEVICES SUCH AS FLOW AND TAMPER SWITCHES, DOOR HOLD-OPEN DEVICES, AND CONTROL SIGNALS.
 6. PROVIDE POWER SUPPLY AND/OR NAC (NOTIFICATION APPLIANCE CIRCUIT) PANEL AS REQUIRED FOR ADDITIONAL DEVICES.
 7. PROVIDE POWER AMPLIFIERS FOR ALL SPEAKERS.
 8. THE NEW FIRE ALARM SYSTEM SHALL MATCH THE EXISTING SIMPLEX/GRINNELL FIRE ALARM SYSTEM.
 9. GROUND THE NEW FIRE ALARM SYSTEM TO THE EXISTING BUILDING GROUNDING SYSTEM.
 10. THE CONTRACTOR SHALL SUBMIT THE FIRE ALARM DRAWINGS TO THE STATE OF INDIANA FOR APPROVAL PRIOR TO SUBMITTING TO THE VA.



1 BUILDING 6 - BASEMENT FIRE ALARM PLAN
 1/4" = 1'-0"

GENERAL NOTES

1. ALL FIRE ALARM NEW WORK SHALL BE COORDINATED WITH THE COR.
2. ALL FIRE ALARM CABLING SHALL BE IN CONDUIT/RACEWAY.
3. CONTRACTOR SHALL RECESS ALL DEVICES IN WALLS.
4. ALL CONDUITS/RACEWAYS SHALL BE FACTORY PAINTED "RED".

KEY NOTES

1. EXISTING TTB TO REMAIN.
2. EXISTING OIT RACK TO REMAIN.
3. PROVIDE NEW FIRE ALARM TRANSDUCER TO MATCH THE EXISTING SIMPLEX/GRINNELL'S FIRE ALARM SYSTEM.
4. PROVIDE NEW FIRE ALARM MODE CONTROLLER TO MATCH THE EXISTING SIMPLEX/GRINNELL'S FIRE ALARM SYSTEM.



100% CONSTRUCTION DOCUMENTS

CONSULTANTS:

ARCHITECT/ENGINEERS:

Drawing Title
BUILDING 6 - FIRE ALARM PLANS

Project Title
REPLACE MAIN ELECTRICAL TO OUT-BUILDINGS

Project Number
 610A4-12-188

Office of
Construction and Facilities Management

Revisions: _____ Date _____



APOGEE
 Consulting Group, PA
 www.apogee.com
 Apollo Project # 2014 121



Civil / Structural Engineer
GUIDON
 905 N Capital Avenue, STE 100
 Indianapolis, IN 46206
 Tel (317) 800-6388

Approved: Project Director

Location
 FORT WAYNE, IN

Building Numbers
 1,3,5,6,7,10,T4,T5,T6

Date
 9/18/2015

Checked
 JKM

Drawn
 JWB

Drawing Number
FA103
 Dwg. 47 of 48

