

DEVICE LEGEND	
SYMBOL	DESCRIPTION
[Symbol]	FIRE ALARM CONTROL PANEL
[Symbol]	FIRE ALARM ANNUNCIATOR PANEL
[Symbol]	FIRE ALARM REMOTE POWER SUPPLY PANEL
[Symbol]	DIGITAL VOICE COMMAND PANEL
[Symbol]	SMOKE DETECTOR
[Symbol]	HEAT DETECTOR
[Symbol]	DUCT DETECTOR
[Symbol]	PULL STATION
[Symbol]	AUDIO / VISUAL INDICATING DEVICE - WALL MOUNT
[Symbol]	AUDIO / VISUAL INDICATING DEVICE - CEILING MOUNT
[Symbol]	VISUAL ONLY INDICATING DEVICE - WALL MOUNT
[Symbol]	VISUAL ONLY INDICATING DEVICE - CEILING MOUNT
[Symbol]	SPEAKER / VISUAL INDICATING DEVICE - WALL MOUNT
[Symbol]	SPEAKER / VISUAL INDICATING DEVICE - CEILING MOUNT
[Symbol]	SPEAKER ONLY INDICATING DEVICE - WALL MOUNT
[Symbol]	SPEAKER ONLY INDICATING DEVICE - CEILING MOUNT
[Symbol]	MONITOR MODULE (T=TEMPERATURE, F=FLOW, P=PRESSURE)
[Symbol]	CONTROL MODULE
[Symbol]	RELAY MODULE
[Symbol]	REMOTE INDICATOR WITH TEST STATION (KEYED) FOR DUCT DETECTOR
[Symbol]	REMOTE INDICATOR FOR DUCT DETECTOR
[Symbol]	DOOR HOLDER
[Symbol]	JUNCTION BOX (HORIZONTAL WIRING)
[Symbol]	JUNCTION BOX (VERTICAL WIRING)
[Symbol]	FIRE ALARM BELL ONLY
[Symbol]	END OF LINE (EOL) RESISTOR
[Symbol]	REPRESENTS WIRE OR CIRCUIT GOING "OUT"
[Symbol]	REPRESENTS WIRE OR CIRCUIT COMING "IN"

- GENERAL NOTES:
- REFER TO DEFICIENCIES PAGE FOR EXPLANATION.
 - ALL VISUAL NOTIFICATION DEVICES SHALL HAVE A 15 CANDELLA RATING UNLESS SHOWN OTHERWISE ON PLANS (i.e. 30cd, 75cd, etc.).



1 EXISTING FIRE ALARM PLAN - FIRST FLOOR
 F1.1 SCALE: 1/8" = 1'-0"

6 WOODCROSS DRIVE
 COLUMBIA, SC 29212
 PHONE: 803-407-0747
 FAX: 803-407-0779



DORN V.A.
 COMMUNITY LIVING CENTER BLDG 103A
 COLUMBIA, SOUTH CAROLINA

EXISTING FIRE ALARM PLAN - FIRST FLOOR

DRAWN BY:
 SC

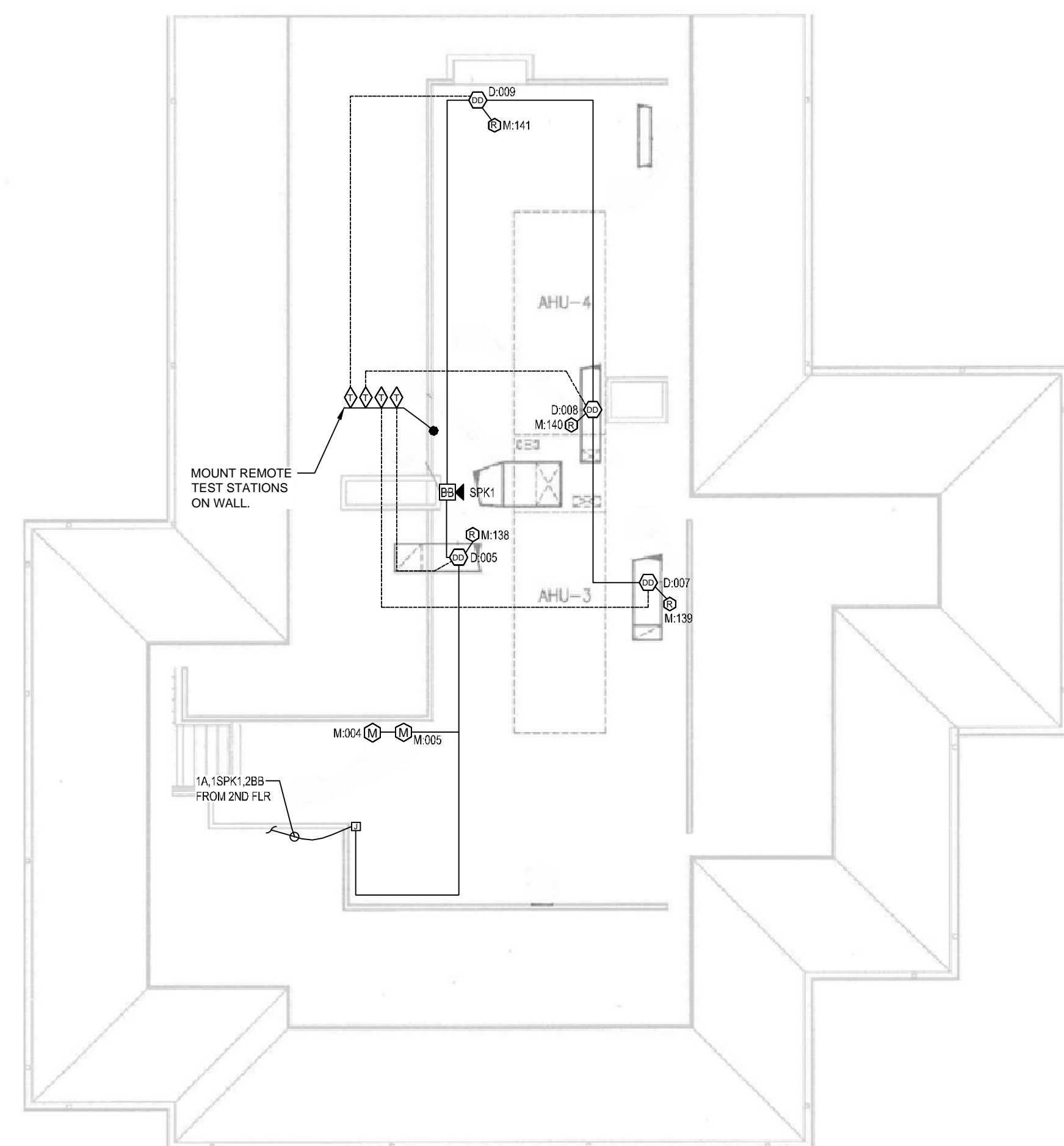
CHECKED BY:
 ES

PROJECT NUMBER:
 12429

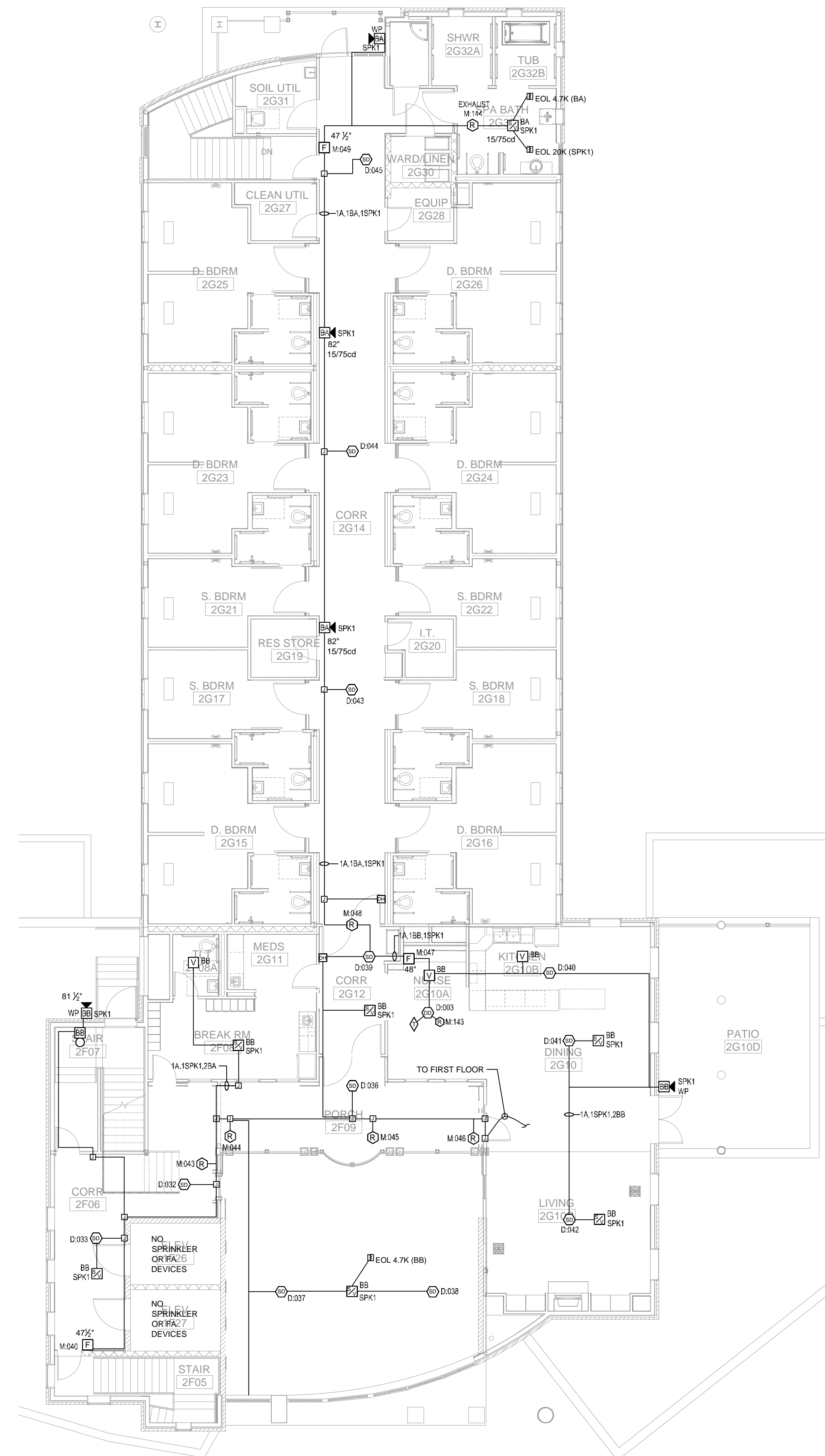
DATE:
 05-23-16

103AF1.1
 DRAWING NO 3 OF 5

DEVICE LEGEND	
SYMBOL	DESCRIPTION
	FIRE ALARM CONTROL PANEL
	FIRE ALARM ANNUNCIATOR PANEL
	FIRE ALARM REMOTE POWER SUPPLY PANEL
	SMOKE DETECTOR
	HEAT DETECTOR
	DUCT DETECTOR
	PULL STATION
	VISUAL ONLY INDICATING DEVICE - WALL MOUNT
	VISUAL ONLY INDICATING DEVICE - CEILING MOUNT
	SPEAKER / VISUAL INDICATING DEVICE - WALL MOUNT
	SPEAKER / VISUAL INDICATING DEVICE - CEILING MOUNT
	MONITOR MODULE (T = TAMPER, F = FLOW, P = PRESSURE)
	CONTROL MODULE
	RELAY MODULE
	TEST STATION (KEYED) FOR DUCT DETECTOR
	JUNCTION BOX
	DOOR HOLDER



2 FIRE ALARM PLAN - PENTHOUSE
F1.2 SCALE: 1/8" = 1'-0"



1 FIRE ALARM PLAN - SECOND FLOOR
F1.2 SCALE: 1/8" = 1'-0"

6 WOODCROSS DRIVE
COLUMBIA, SC 29212
PHONE: 803-407-0747
FAX: 803-407-0779



DORN V.A.
COMMUNITY LIVING CENTER BLDG 103A
COLUMBIA, SOUTH CAROLINA

FIRE ALARM PLAN - SECOND FLOOR

DRAWN BY:
SC
CHECKED BY:
ES
PROJECT NUMBER:
12429
DATE:
05-23-16

103AF1.2

DRAWING NO. 4 OF 5



DEVICE LEGEND	
SYMBOL	DESCRIPTION
	FIRE ALARM CONTROL PANEL
	FIRE ALARM ANNUCIATOR PANEL
	FIRE ALARM REMOTE POWER SUPPLY PANEL
	SMOKE DETECTOR
	HEAT DETECTOR
	DUCT DETECTOR
	PULL STATION
	VISUAL ONLY INDICATING DEVICE - WALL MOUNT
	VISUAL ONLY INDICATING DEVICE - CEILING MOUNT
	SPEAKER / VISUAL INDICATING DEVICE - WALL MOUNT
	SPEAKER / VISUAL INDICATING DEVICE - CEILING MOUNT
	MONITOR MODULE (T = TAMPER, F = FLOW, P = PRESSURE)
	CONTROL MODULE
	RELAY MODULE
	TEST STATION (KEYED) FOR DUCT DETECTOR
	JUNCTION BOX
	DOOR HOLDER

1 EXISTING FIRE ALARM PLAN - CLC3
 F1.3 SCALE: 1/8" = 1'-0"

6 WOODCROSS DRIVE
 COLUMBIA, SC 29212
 PHONE: 803-407-0747
 FAX: 803-407-0779



DORN V.A.
 COMMUNITY LIVING CENTER BLDG 103A
 COLUMBIA, SOUTH CAROLINA

EXISTING FIRE ALARM PLAN - CLC3

DRAWN BY:
 SC

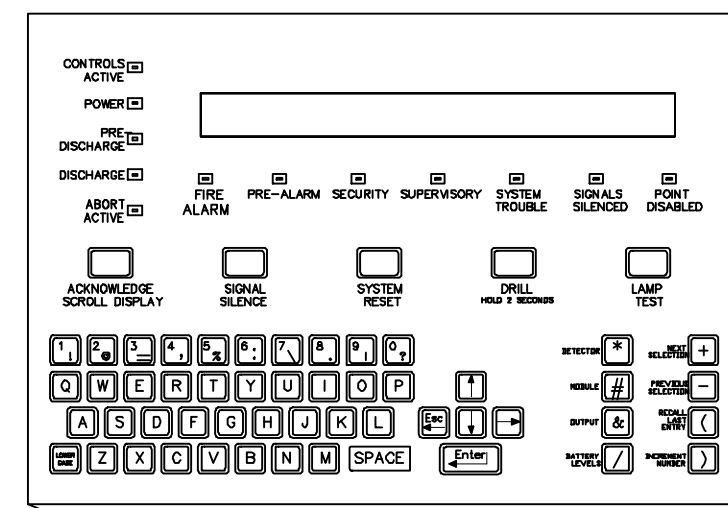
CHECKED BY:
 ES

PROJECT NUMBER:
 12429

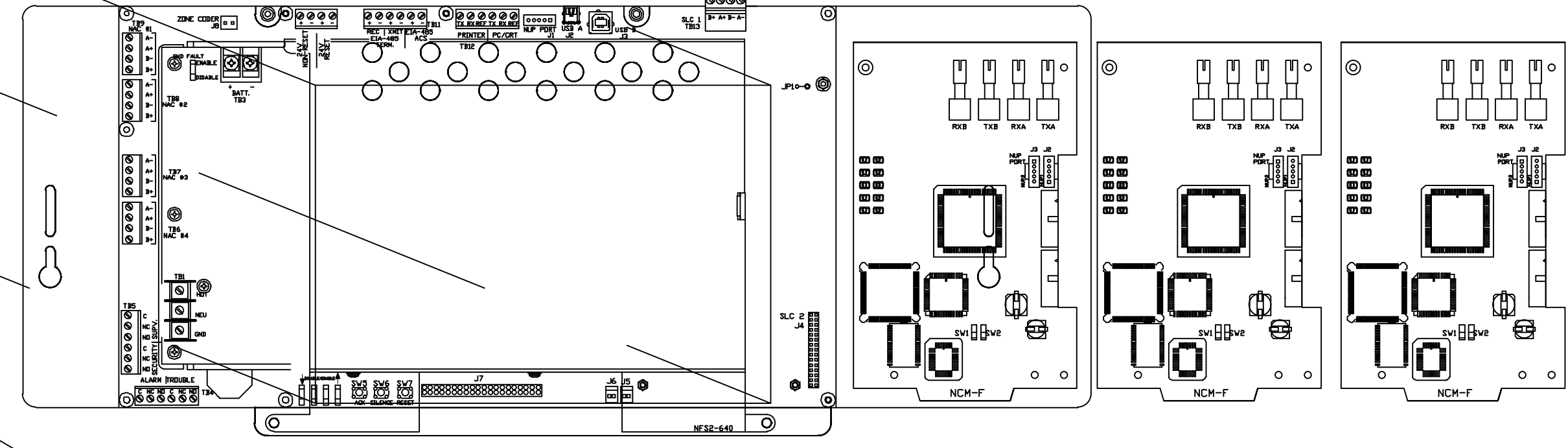
DATE:
 05-23-16

103AF1.3

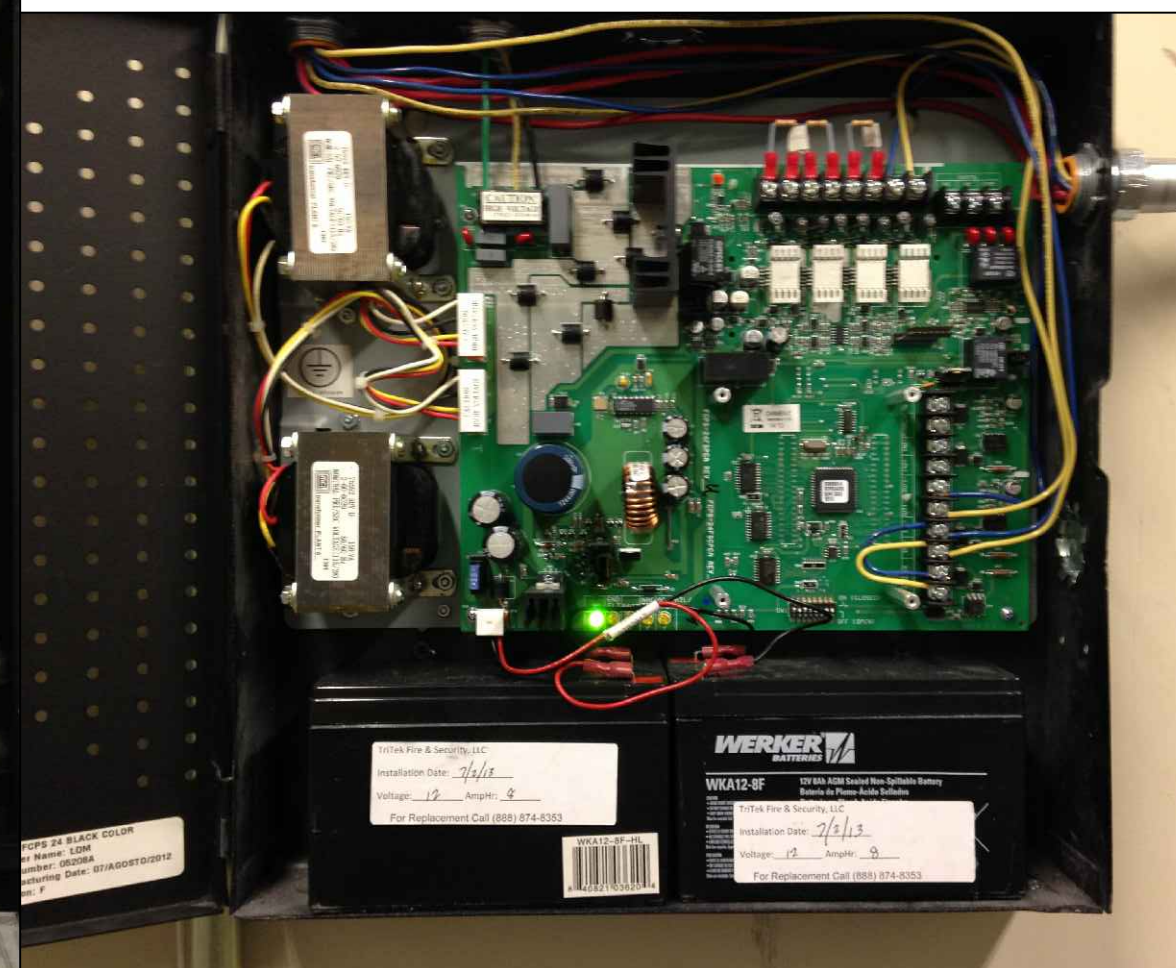
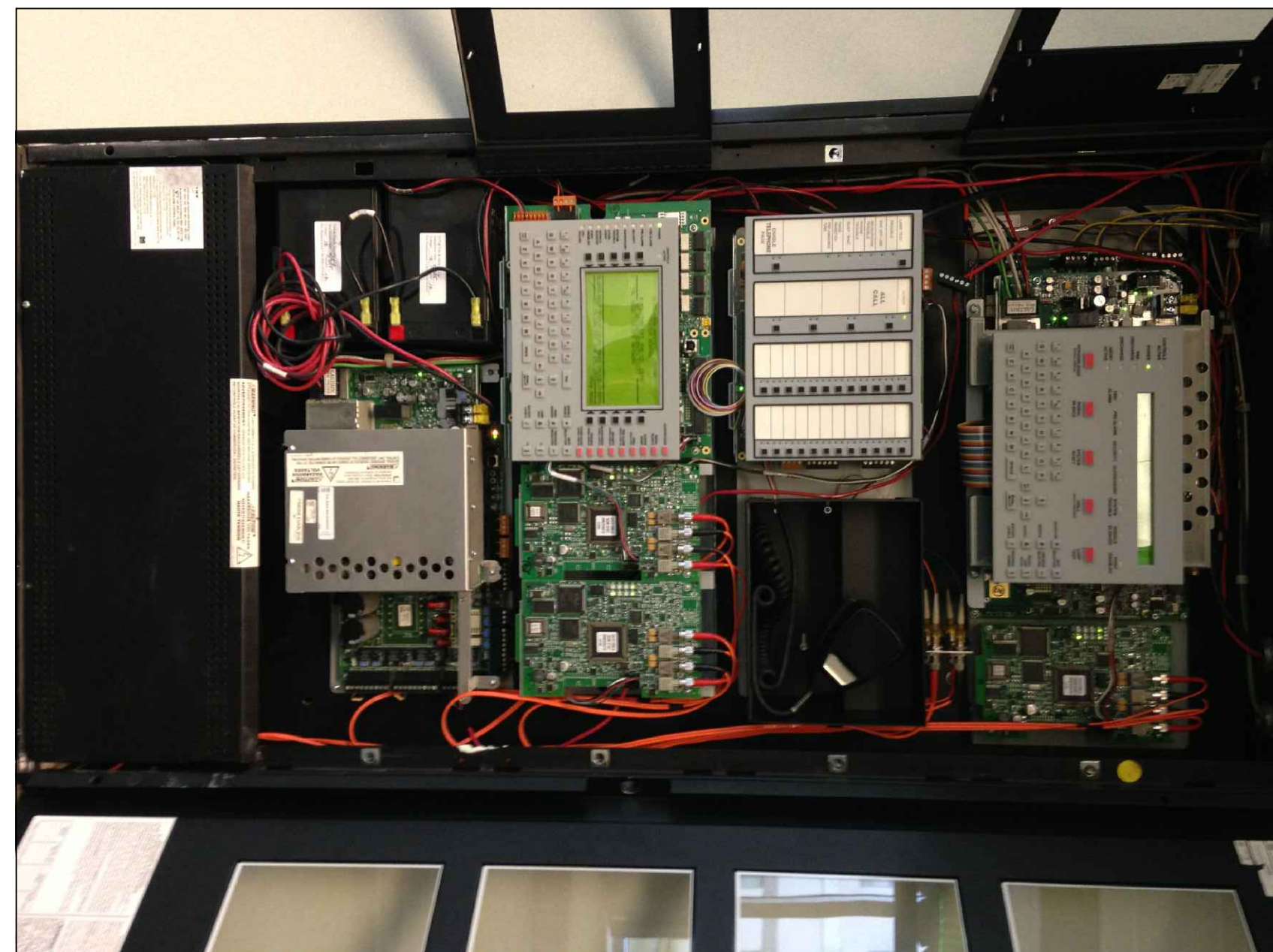
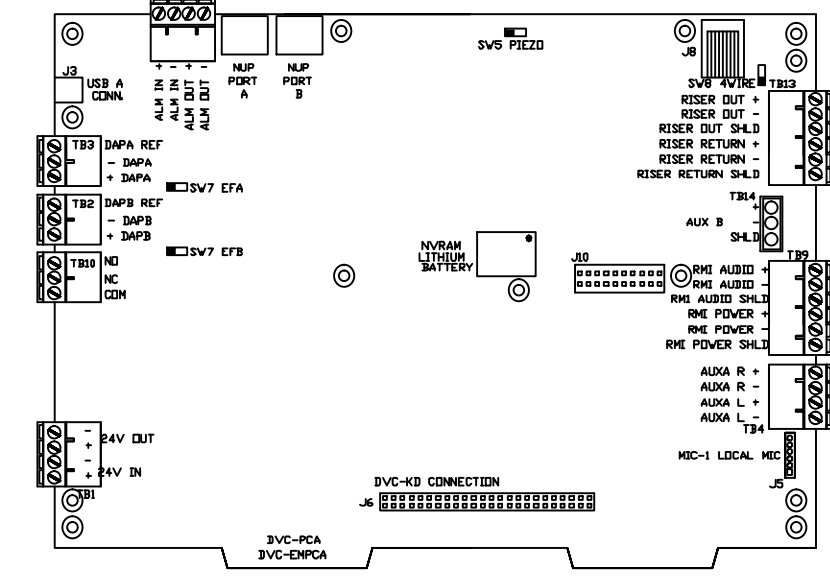
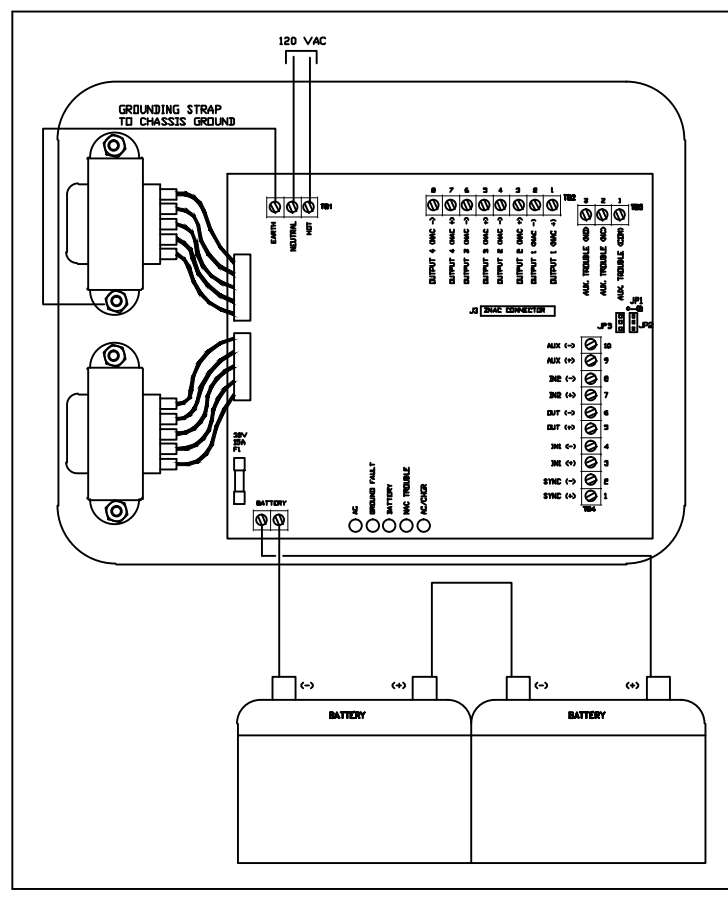
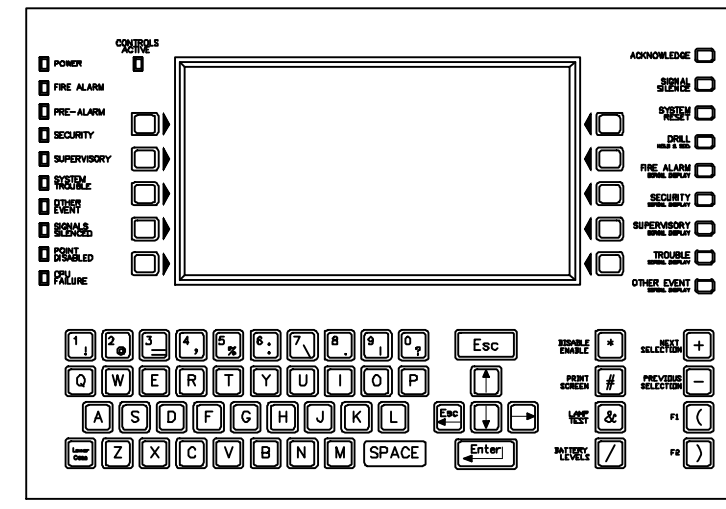
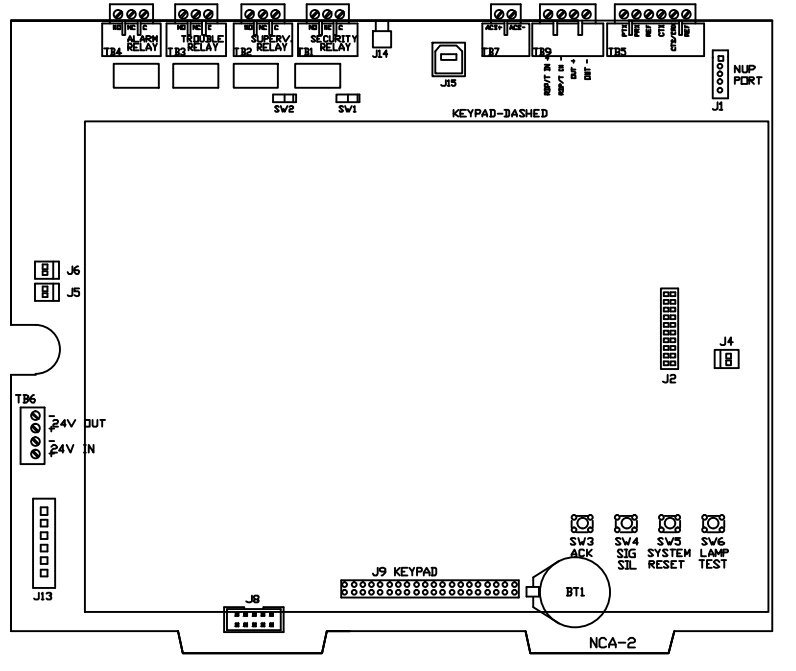
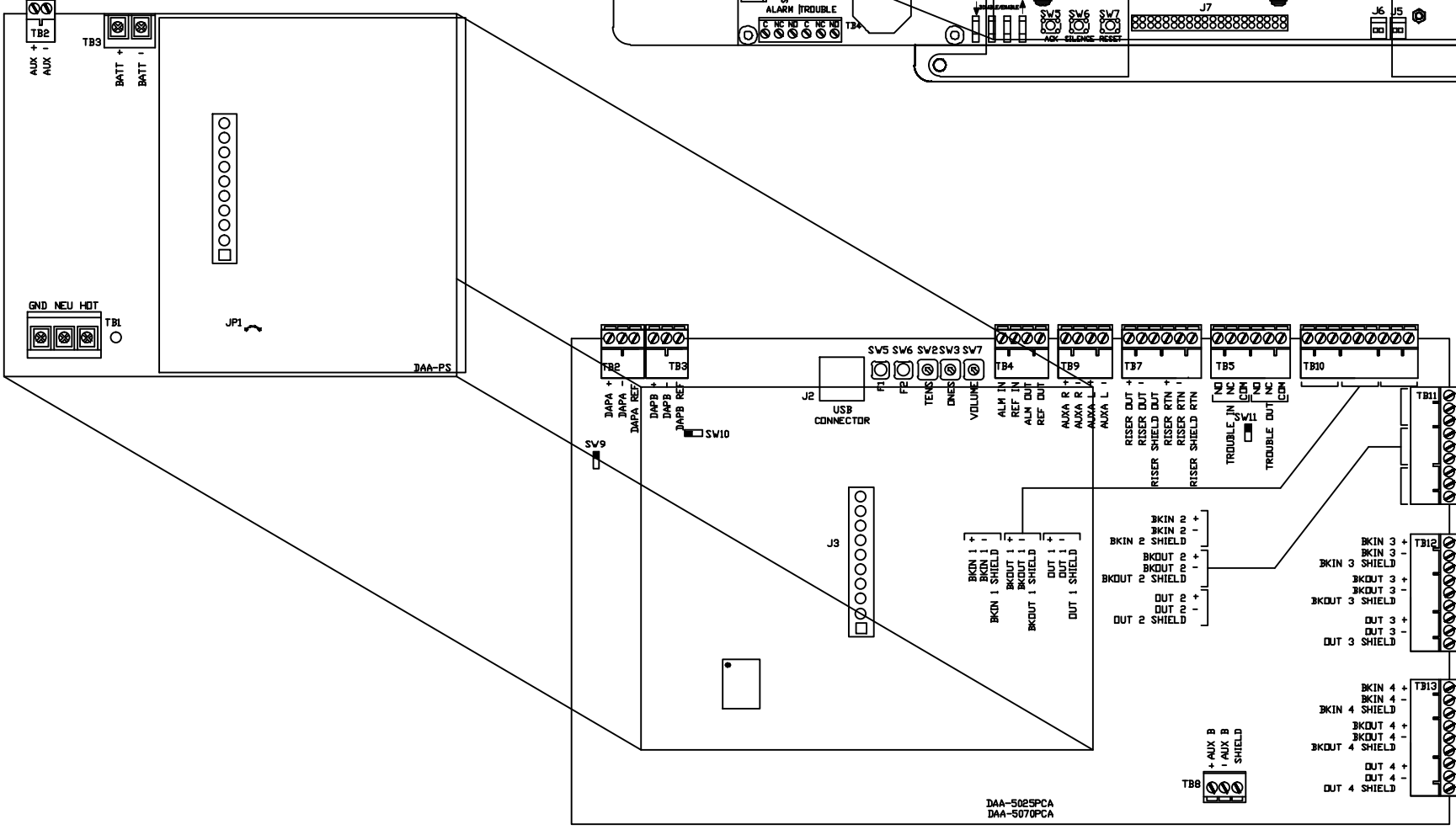
DRAWING NO. 4 OF 5



NOTES: PANEL AT HALL BETWEEN 103 AND 103A. ALL FOUR NAC CIRCUITS USED IN FACP. 1" HOLES IN BACK BOX. POWER SUPPLY HAS EXTRA HOLES IN BOX. NAC IS IN FIRST FLOOR ELECTRIC ROOM BY ELEVATOR. THERE IS ONLY ONE CIRCUIT USED.



- EQUIPMENT:
 NFS2-640
 NCM-F (3)
 DVC
 NCA2
 DAA AMPLIFIER
 12V 12AH BATTERIES (2)
 12V 18AH BATTERIES (2)
 FCPS-24S8



DEVICE LEGEND	
SYMBOL	DESCRIPTION
[Symbol]	FIRE ALARM CONTROL PANEL
[Symbol]	FIRE ALARM ANNUCIATOR PANEL
[Symbol]	FIRE ALARM REMOTE POWER SUPPLY PANEL
[Symbol]	SMOKE DETECTOR
[Symbol]	HEAT DETECTOR
[Symbol]	DUCT DETECTOR
[Symbol]	PULL STATION
[Symbol]	VISUAL ONLY INDICATING DEVICE - WALL MOUNT
[Symbol]	VISUAL ONLY INDICATING DEVICE - CEILING MOUNT
[Symbol]	SPEAKER / VISUAL INDICATING DEVICE - WALL MOUNT
[Symbol]	SPEAKER / VISUAL INDICATING DEVICE - CEILING MOUNT
[Symbol]	MONITOR MODULE (T = TAMPER, F = FLOW, P = PRESSURE)
[Symbol]	CONTROL MODULE
[Symbol]	RELAY MODULE
[Symbol]	TEST STATION (KEYED) FOR DUCT DETECTOR
[Symbol]	JUNCTION BOX
[Symbol]	DOOR HOLDER

6 WOODCROSS DRIVE
 COLUMBIA, SC 29212
 PHONE: 803-407-0747
 FAX: 803-407-0779



DORN V.A.
 COMMUNITY LIVING CENTER BLDG 103A
 COLUMBIA, SOUTH CAROLINA

FIRE ALARM PLAN - SECOND FLOOR

DRAWN BY:
 SC
 CHECKED BY:
 ES
 PROJECT NUMBER:
 12429
 DATE:
 05-23-16

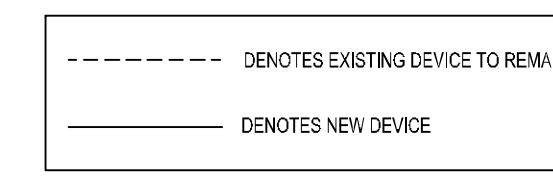
103AF2.1

DRAWING NO 5 OF 5



DEVICE LEGEND	
SYMBOL	DESCRIPTION
[Symbol]	FIRE ALARM CONTROL PANEL
[Symbol]	FIRE ALARM ANNUNCIATOR PANEL
[Symbol]	FIRE ALARM REMOTE POWER SUPPLY PANEL
[Symbol]	DIGITAL VOICE COMMAND PANEL
[Symbol]	SMOKE DETECTOR
[Symbol]	HEAT DETECTOR
[Symbol]	DUCT DETECTOR
[Symbol]	PULL STATION
[Symbol]	AUDIO / VISUAL INDICATING DEVICE - WALL MOUNT
[Symbol]	AUDIO / VISUAL INDICATING DEVICE - CEILING MOUNT
[Symbol]	VISUAL ONLY INDICATING DEVICE - WALL MOUNT
[Symbol]	VISUAL ONLY INDICATING DEVICE - CEILING MOUNT
[Symbol]	SPEAKER / VISUAL INDICATING DEVICE - WALL MOUNT
[Symbol]	SPEAKER / VISUAL INDICATING DEVICE - CEILING MOUNT
[Symbol]	SPEAKER ONLY INDICATING DEVICE - WALL MOUNT
[Symbol]	SPEAKER ONLY INDICATING DEVICE - CEILING MOUNT
[Symbol]	MONITOR MODULE (T-TAMPER, F-FLOW, P-PRESSURE)
[Symbol]	CONTROL MODULE
[Symbol]	RELAY MODULE
[Symbol]	REMOTE INDICATOR WITH TEST STATION (KEYED) FOR DUCT DETECTOR
[Symbol]	REMOTE INDICATOR FOR DUCT DETECTOR
[Symbol]	DOOR HOLDER
[Symbol]	JUNCTION BOX (HORIZONTAL WIRING)
[Symbol]	JUNCTION BOX (VERTICAL WIRING)
[Symbol]	FIRE ALARM BELL ONLY
[Symbol]	END OF LINE (EOL) RESISTOR
[Symbol]	REPRESENTS WIRE OR CIRCUIT GOING "OUT"
[Symbol]	REPRESENTS WIRE OR CIRCUIT COMING "IN"

GENERAL NOTES:
 REFER TO DEFICIENCIES PAGE FOR EXPLANATION.
 ALL VISUAL NOTIFICATION DEVICES SHALL HAVE A 15 CANDELLA RATING UNLESS SHOWN OTHERWISE ON PLANS (i.e. 300d, 750d, etc.).



6 WOODCROSS DRIVE
 COLUMBIA, SC 29212
 PHONE: 803-407-0747
 FAX: 803-407-0779



DORN V.A.
 COMMUNITY LIVING CENTER BLDG 103A
 COLUMBIA, SOUTH CAROLINA

NEW FIRE ALARM PLAN - 1ST FLOOR

DRAWN BY:
 SC

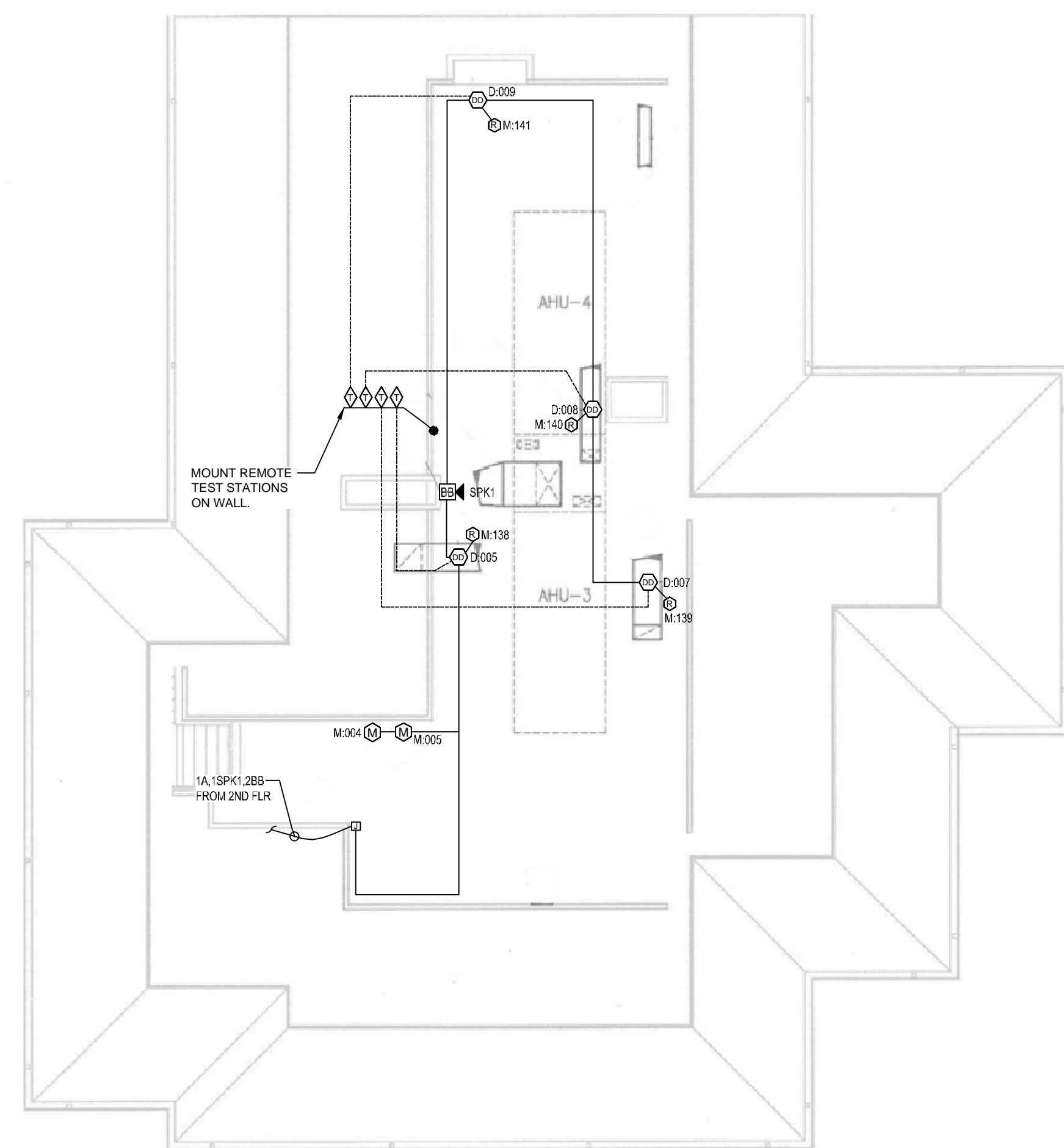
CHECKED BY:
 ES

PROJECT NUMBER:
 12429

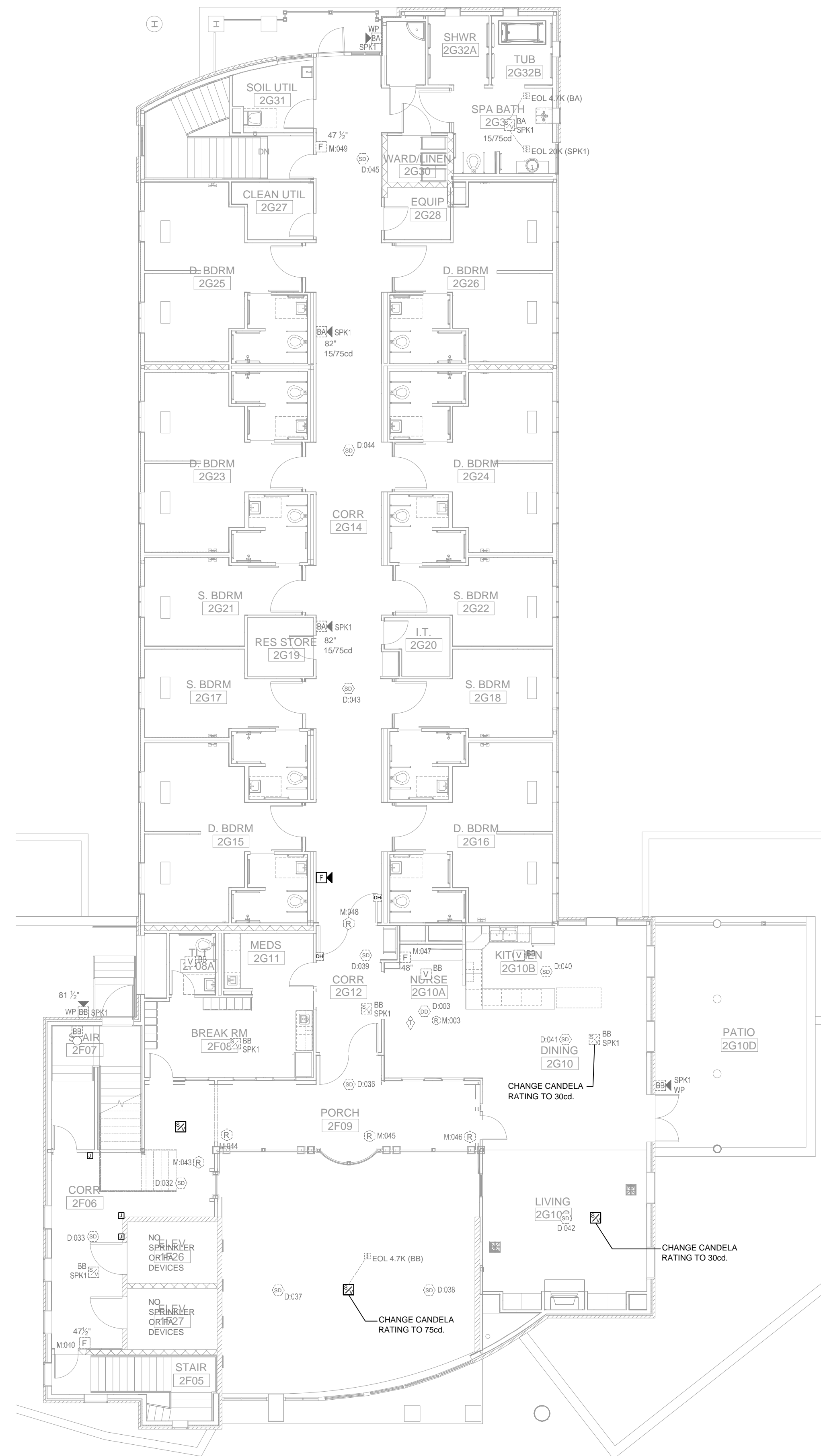
DATE:
 05-23-16

103AF3.1
 DRAWING NO 3 OF 5

DEVICE LEGEND	
SYMBOL	DESCRIPTION
	FIRE ALARM CONTROL PANEL
	FIRE ALARM ANNUCIATOR PANEL
	FIRE ALARM REMOTE POWER SUPPLY PANEL
	SMOKE DETECTOR
	HEAT DETECTOR
	DUCT DETECTOR
	PULL STATION
	VISUAL ONLY INDICATING DEVICE - WALL MOUNT
	VISUAL ONLY INDICATING DEVICE - CEILING MOUNT
	SPEAKER / VISUAL INDICATING DEVICE - WALL MOUNT
	SPEAKER / VISUAL INDICATING DEVICE - CEILING MOUNT
	MONITOR MODULE (T = TAMPER, F = FLOW, P = PRESSURE)
	CONTROL MODULE
	RELAY MODULE
	TEST STATION (KEYED) FOR DUCT DETECTOR
	JUNCTION BOX
	DOOR HOLDER



2 NEW FIRE ALARM PLAN - PENTHOUSE
F1.2 SCALE: 1/8" = 1'-0"



1 NEW FIRE ALARM PLAN - SECOND FLOOR
F3.2 SCALE: 1/8" = 1'-0"

6 WOODCROSS DRIVE
COLUMBIA, SC 29212
PHONE: 803-407-0747
FAX: 803-407-0779



DORN V.A.
COMMUNITY LIVING CENTER BLDG 103A
COLUMBIA, SOUTH CAROLINA

NEW FIRE ALARM PLAN - SECOND FLOOR

DRAWN BY:
SC

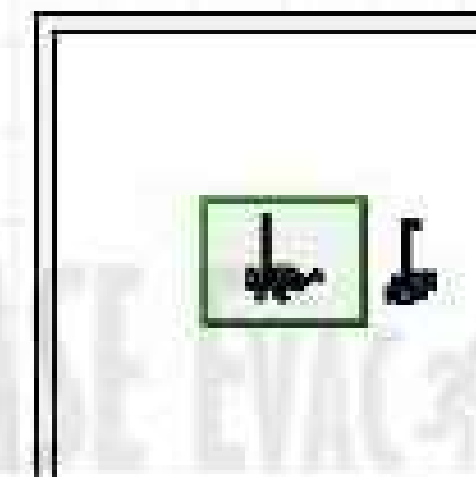
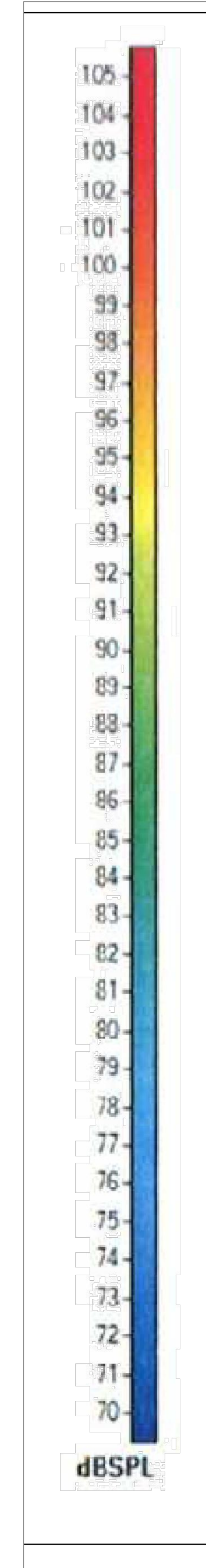
CHECKED BY:
ES

PROJECT NUMBER:
12429

DATE:
05-23-16

103AF3.2

DRAWING NO 4 OF 5



1 EXISTING SOUND MAPPING PLAN - 1ST FLOOR
 F4.1 SCALE: 1/8" = 1'-0"

6 WOODCROSS DRIVE
 COLUMBIA, SC 29212
 PHONE: 803-407-0747
 FAX: 803-407-0779



DORN V.A.
 COMMUNITY LIVING CENTER BLDG 103A
 COLUMBIA, SOUTH CAROLINA

EXIST. SOUND MAPPING PLAN - 1ST FLOOR

DRAWN BY:
 SC
 CHECKED BY:
 ES
 PROJECT NUMBER:
 12429
 DATE:
 05-23-16

103AF4.1

DRAWING NO 4 OF 5



1 NEW SOUND MAPPING PLAN - 1ST FLOOR
 F4.2 SCALE: 1/8" = 1'-0"

6 WOODCROSS DRIVE
 COLUMBIA, SC 29212
 PHONE: 803-407-0747
 FAX: 803-407-0779

Tritek
 Fire, Security & Communications
 The Integration of Technology and Life Safety

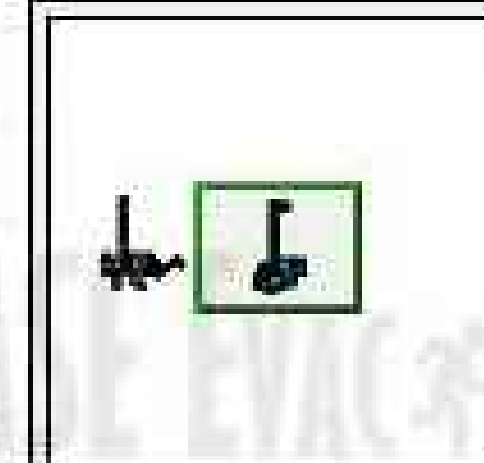
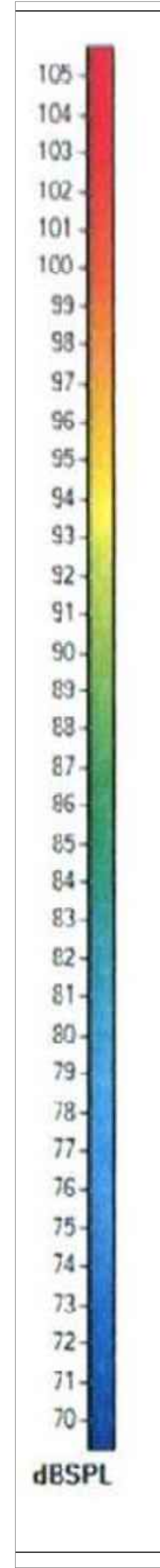
DORN V.A.
 COMMUNITY LIVING CENTER BLDG 103A
 COLUMBIA, SOUTH CAROLINA

NEW SOUND MAPPING PLAN - 1ST FLOOR

DRAWN BY:
 SC
 CHECKED BY:
 ES
 PROJECT NUMBER:
 12429
 DATE:
 05-23-16

103AF4.2

DRAWING NO 4 OF 5



1 EXISTING SOUND MAPPING PLAN - 2ND FLOOR
 F4.4 SCALE: 1/8" = 1'-0"

6 WOODCROSS DRIVE
 COLUMBIA, SC 29212
 PHONE: 803-407-0747
 FAX: 803-407-0779



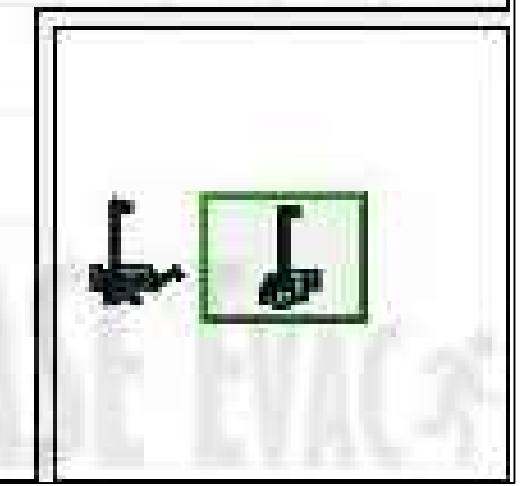
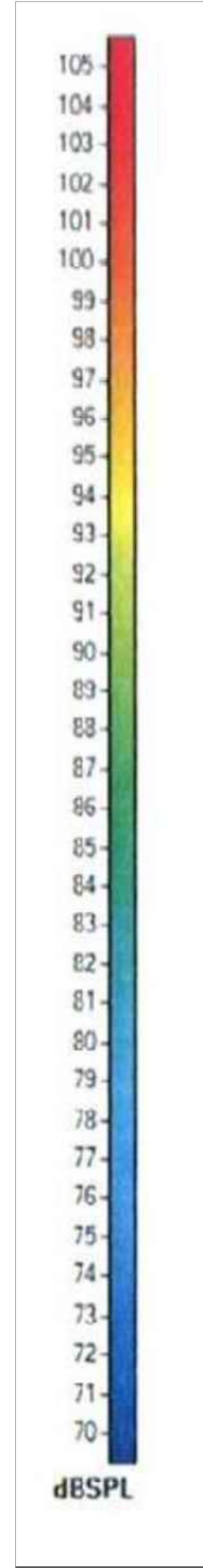
DORN V.A.
 COMMUNITY LIVING CENTER BLDG 103A
 COLUMBIA, SOUTH CAROLINA

EXIST. SOUND MAPPING PLAN - 2ND FLOOR

DRAWN BY:
 SC
 CHECKED BY:
 ES
 PROJECT NUMBER:
 12429
 DATE:
 05-23-16

103AF4.3

DRAWING NO. 4 OF 5



1 NEW SOUND MAPPING PLAN - 2ND FLOOR
 F4.4 SCALE: 1/8" = 1'-0"

6 WOODCROSS DRIVE
 COLUMBIA, SC 29212
 PHONE: 803-407-0747
 FAX: 803-407-0779

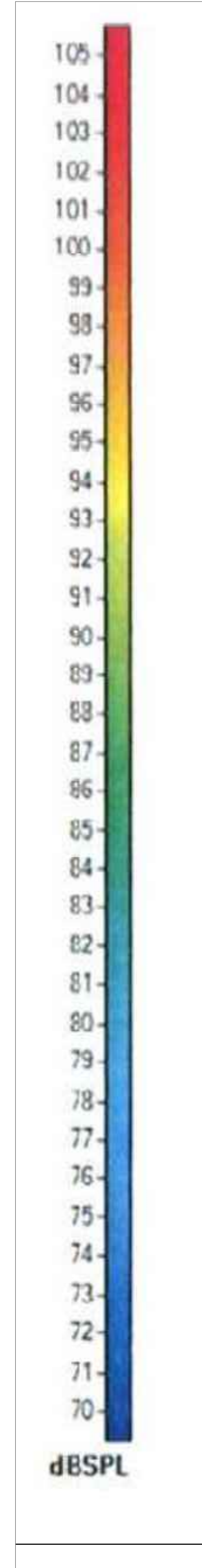
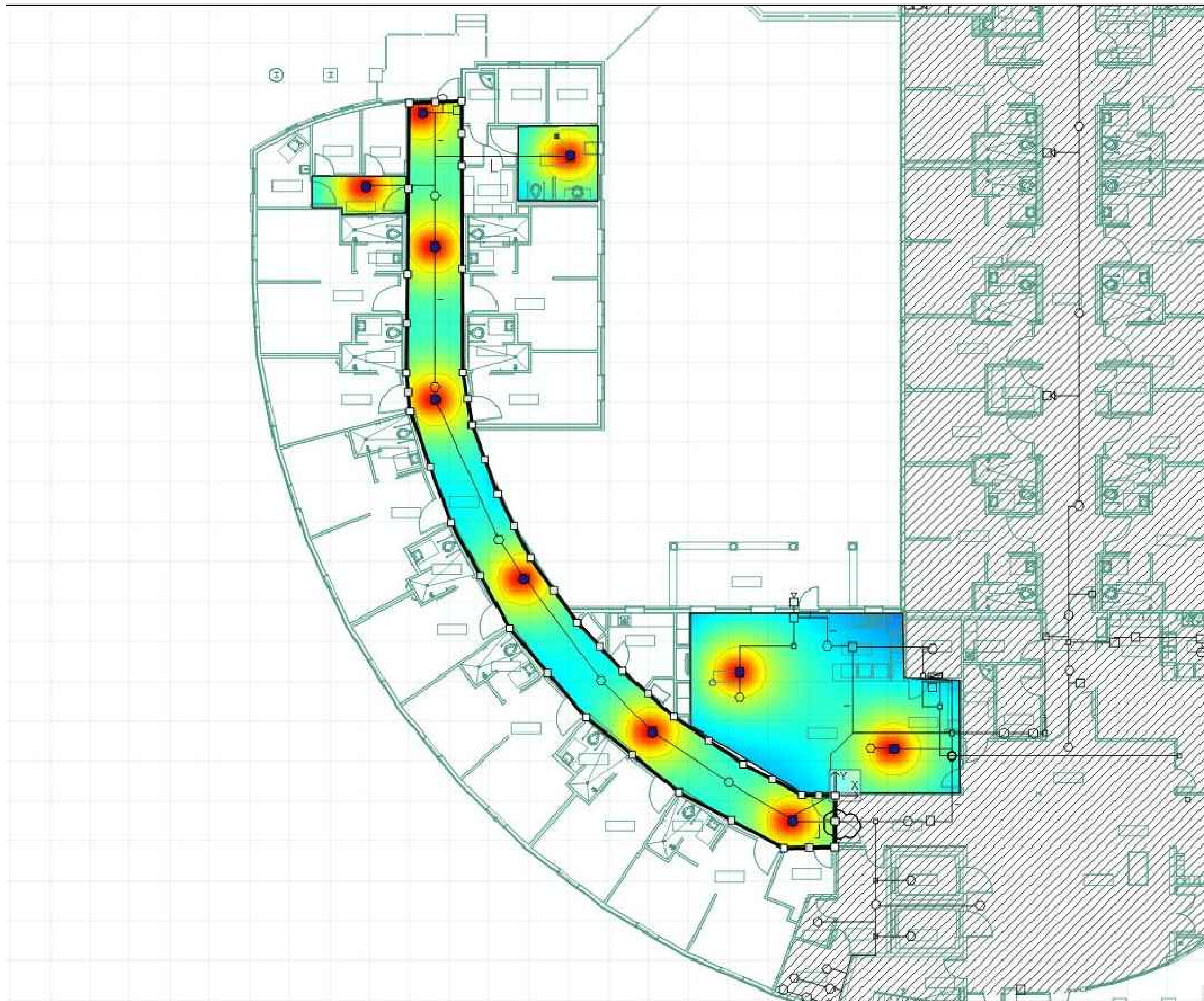


DORN V.A.
 COMMUNITY LIVING CENTER BLDG 103A
 COLUMBIA, SOUTH CAROLINA

NEW SOUND MAPPING PLAN - 2ND FLOOR

DRAWN BY:
 SC
 CHECKED BY:
 ES
 PROJECT NUMBER:
 12429
 DATE:
 05-23-16

103AF4.4
 DRAWING NO. 4 OF 5



1 EXISTING SOUND MAPPING PLAN - CLC3
 F1.3 SCALE: 1/8" = 1'-0"

6 WOODCROSS DRIVE
 COLUMBIA, SC 29212
 PHONE: 803-407-0747
 FAX: 803-407-0779



DORN V.A.
 COMMUNITY LIVING CENTER BLDG 103A
 COLUMBIA, SOUTH CAROLINA

EXISTING SOUND MAPPING PLAN - CLC3

DRAWN BY:
 SC
 CHECKED BY:
 ES
 PROJECT NUMBER:
 12429
 DATE:
 05-23-16

103AF4.5

DRAWING NO. 4 OF 5