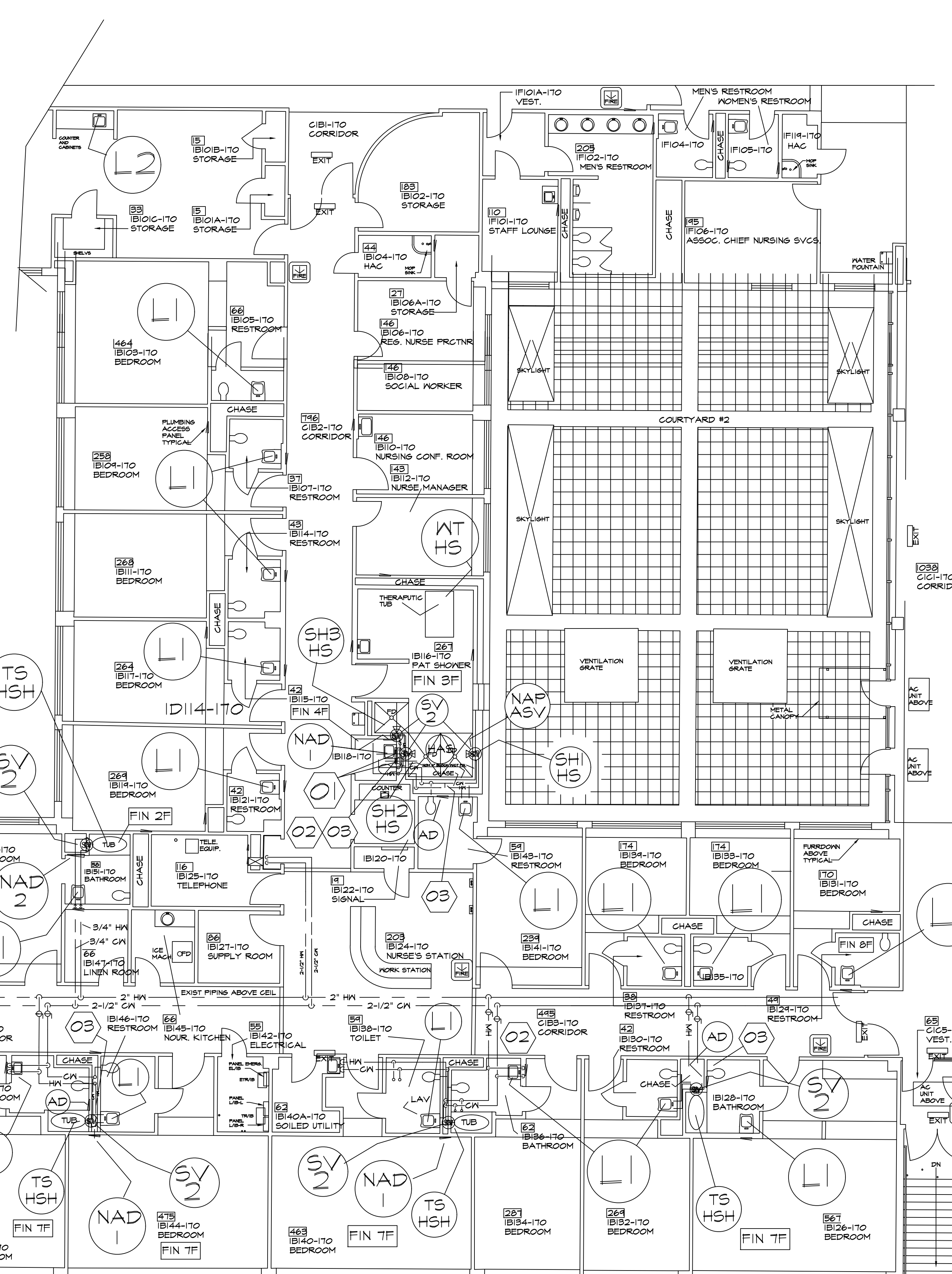


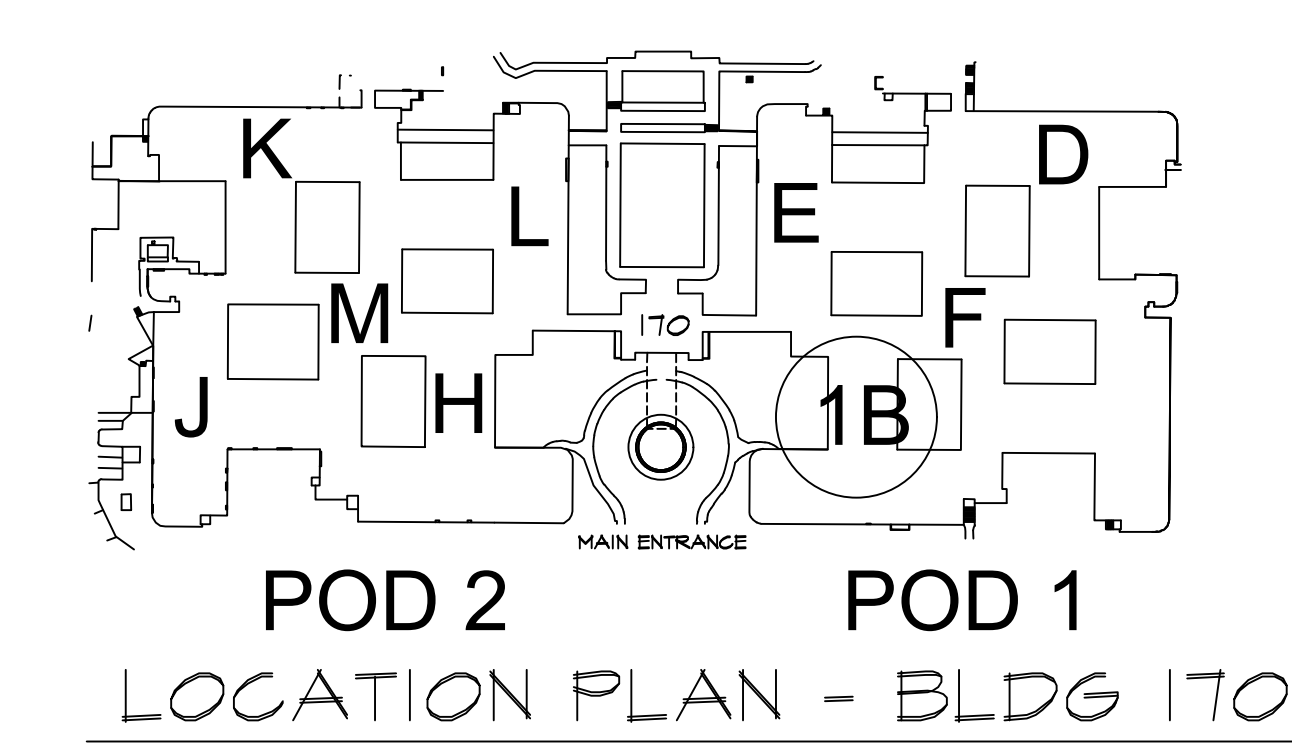
FIN NO.	FLOOR	WALL	FC	CEIL	NOTES
1F	TUB	CT	NONE	AT	
2F	TUB	CT	NONE	FSB	
3F	EPOXY	EOT	NONE	VCGB	80% EPOXY OVER CER TILE VCGB-VINYL COVERED STP BD
3FA	CER TILE	FSB	CT	AT	NOT A SHOWER SP.
4F	EPOXY	EPOXY	NONE	FSB	NOT A SHOWER SP.
5F	EPOXY	EPOXY	NONE	EPOXY	
6F	EPOXY	EPOXY	NONE	AT	
7F	TILE	FSB	NONE	AT	NOT A SHOWER SP.
8F	CER TILE	CT	NONE	VCGB	
9F	CER TILE	CT	NONE	FSB	
10F	CER TILE	CT	NONE	AT	

CONTRACTOR VERIFIES FINISHES AS REQ'D



## NLR QUAD 1B - DEVICE LOCATIONS

1/8" = 1'-0"



- KEYED NOTES**
- 1 INSTALL NEW ACCESS DOORS-- TO INSTALL NEW SHOWER VALVES FOR SHOWERS 2 AND 3. REPAIR WALL AS REQ'D AND TO MATCH EXIST FIN. EXIST 8X8 AD REMAINS. RELOCATE MIRROR AND SOAP DISPENSER FOR AD SPACE AS REQUIRED. EXIST RECPT REMAINS.
  - 2 EXIST SHUT OFF VALVES - ABOVE CEIL
  - 3 EXIST SHUT OFF VALVES - IN CHASE.

LOCATION-NEW WORK NOTES-DESCRIPTIONS	NO	
LI EXIST WALL MOUNTED LAVATORY WITH FAUCET AND SHUT OFF VALVES. INSTALL MIXING VALVE BENEATH LAV, AND CONNECT TO EXIST FIXTURE FAUCET VALVES. INSTALL NEW POINT OF USE MIXING VALVE - TYPE I. REFERENCE INSTALL. DETAIL POU-1	21	
L2 SAME AS TYPE LI EXCEPT INSTALL BENEATH LAV IN CASEWORK.	1	
SV # IN WALL OR CHASE NEW SHOWER VALVE-REMOVE EXIST. # IDENTIFIER INDICATES SIZE. ( 1-3/4", 2-1/2", 3-1") PROVIDE ACCESS TO NEW SHOWER VALVE FROM FRONT OR REAR AS INDICATED. PROVIDE ACCESS PANEL OR DOOR AS INDICATED. PROVIDE NEW PIPING AS REQ'D. ENLARGE OPENING AT EXIST SHOWER VALVE AS REQ'D TO INSTALL NEW. REPAIR DAMAGE TO EXISTING SURFACES AS REQUIRED TO INSTALL NEW ACCESS PLATE OR DOOR.	8	
NHS RSH EXISTING FIXED SHOWER HEAD, REMOVE HEAD AND SPOUT PIPE. INSTALL NEW HAND SHOWER HOSE AND HEAD. INSTALL VAC CONNECTION, AND SLIDER BAR FOR HAND SHOWER HEAD.		
EHS RSC EXIST HAND SHOWER HEAD AND HOSE. CONNECTED TO SHOWER SPOUT PIPE. REMOVE SPOUT AND INSTALL VAC CONN. RECONNECT HOSE AND HAND SHOWER HEAD.		
S/HS RSC EXIST HAND SHOWER HEAD AND HAND HOSE. CONNECTED TO SHOWER SPOUT PIPE. REMOVE SPOUT AND INSTALL VAC CONN. RECONNECT HOSE AND HAND SHOWER HEAD.		
EXISTING OR NEW DEVICES OR ITEMS	TOTAL ASD TO BE INSTALLED	30
SH HS EXIST SHOWER HEAD AND HAND SHOWER HEAD/HOSE.	TS EXIST TUB WITH SPOUT	TS HSH EXIST TUB W/SPOUT AND HAND SHOWER HD AND HOSE
NAD # NEW ACCESS DOOR AD - # SIZE -WALL ACCESS. # 1-16X16/ 2-24"X24"/SIZE 3-12"X12"/O- OTHER SIZE LOCATE WHERE SHOWN.	AD EXISTING ACCESS DOOR TO REMAIN	R AD EXIST AD TO BE REMOVED
NAP ASV NEW CONTROL SIDE COVER PLATE AT NEW SHOWER VALVE. WITH OPENING FOR SHOWER VALVE, AND OPENINGS FOR ATTACHMENT. PROVIDE SIZE TO FIT. SECURE AND SEAL REFERENCE SPEC.	TOT 6 ASSE 1016 SV TYPE T/P NEW IN WALL SHOWER VALVE-REMOVE EXIST. CONNECT TO IN WALL PIPE PROVIDE PIPE & CONNECTIONS. REPAIR WALL SURF AS REQ'D INSTALL PER MFG. REFERENCE WORK NOTE SV #	SV #
HAS EXIST HANDICAPPED ACCESSIBLE SHOWER.	SH EXIST FIXED SHOWER HEAD	HSH EXISTING HAND SHOWER HEAD AND HOSE.
WT HS THERAPUTIC TUB NO WORK		

- GENERAL NOTES**
- 1 INSTALL ALL ITEMS AS INDICATED TO BE NEW OR TO BE RELOCATED.
  - 2 REMOVAL AND REPLACEMENT OF EXISTING SHOWER VALVES IS TO BE FROM THE REAR OR BACK SIDE OF EXIST VALVE, WHERE NEW ACCESS DOORS ARE SHOWN.

REVISIONS

	DATE
--	------

APPROVED: MEDICAL CENTER DIRECTOR	APPROVED: FACILITY PLANNER	APPROVED: SERVICE CHIEF
APPROVED: ASSOCIATE DIRECTOR	APPROVED: CHIEF ENGINEER	APPROVED: SERVICE CHIEF
APPROVED: ASSISTANT DIRECTOR	APPROVED: SERVICE CHIEF	APPROVED: SERVICE CHIEF

DRAWING TITLE <b>NLR WORK LOCATION PLAN &amp; DETAILS</b>	PROJECT TITLE <b>CORRECT LEGIONELLA PROBLEMS</b>	DATE 7/2017
QUAD 1B-NLR	BUILDING NUMBER 170	CHECKED KS
	LOCATION V.A.M.C. NLR DIVISION	DRAWN RS
		DRAWING NO. <b>ASD-1BR</b>
		Dwg 1 of 4

PROJECT 598-17-105

Office of Facilities

DEPARTMENT OF VETERANS AFFAIRS